

goodnature®

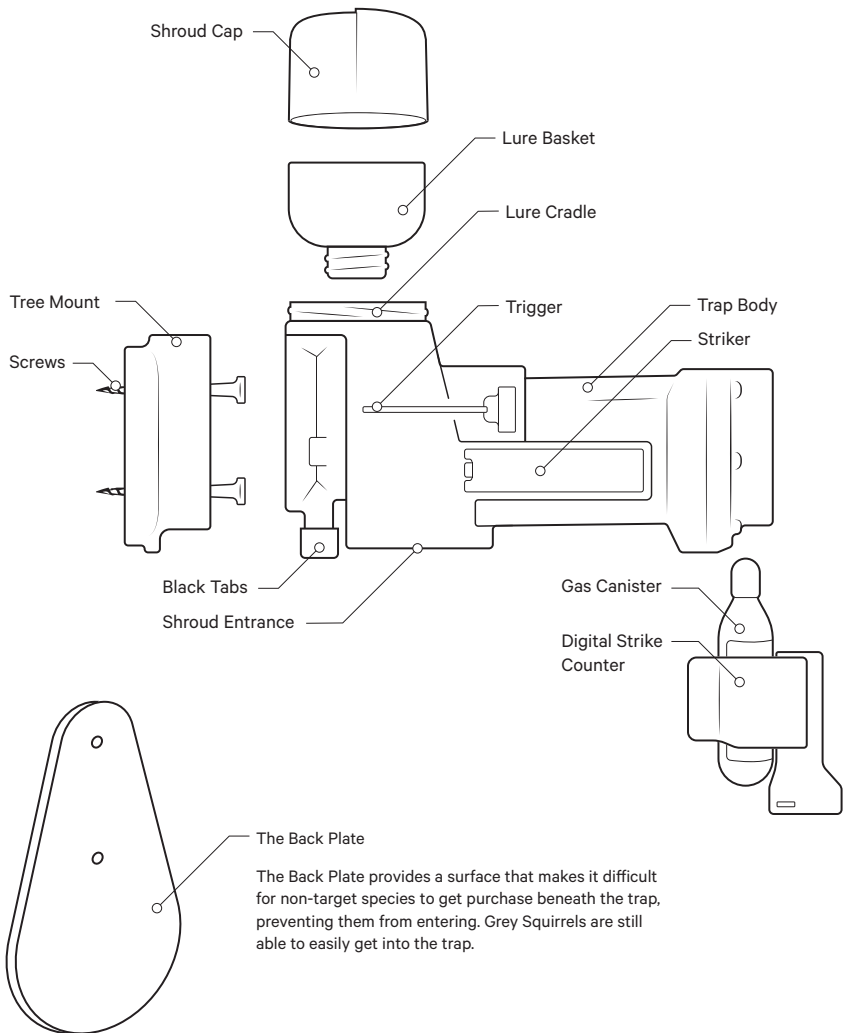


A18 Grey Squirrel Trap

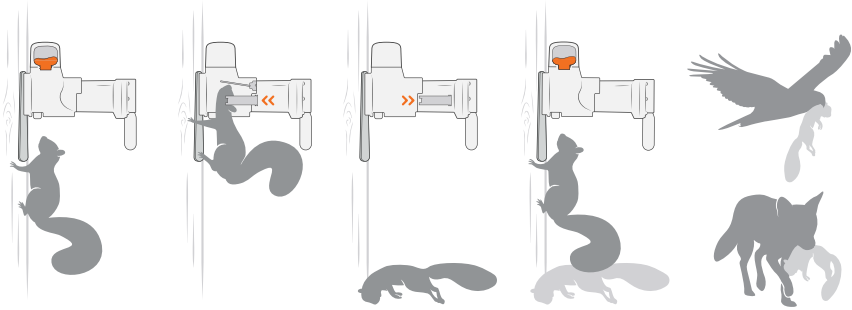
Quick Start Guide

goodnaturetraps.co.uk

Your Trap - A18 Grey Squirrel



How it works



Sniff sniff

Targeted long life lure attracts grey squirrels into the trap.

Kapow!

Grey squirrels move the trigger to get to the lure, firing the trap.

Auto-reset

The trap clears and resets immediately after an A-Class humane kill.

Sniff sniff...

The long life lure continues to attract grey squirrels for constant control.

Scavenged

Different species scavenge the dead carcasses from below the trap.

Doing things differently is in our nature

We started Goodnature for good reason: to see endangered wildlife in New Zealand and around the world flourish again. This means getting on top of a bunch of pests. We also want to go about it kindly, without using nasty toxins. That's why we develop humane traps that automatically reset and are easy and safe to use in living spaces through to wild places. Not only have we created a world-first, we started a revolution. Big thanks for joining us.

Your constant control system

Congratulations! You're now the owner of the world's most advanced pest control technology. Goodnature's automatic resetting trapping system gives you constant control against pest reinvasion. Powered using compressed CO₂ gas, Goodnature technology combines design engineering principles and animal behavioural science with the highest manufacturing standards to deliver a trap that will kill 18 times per gas canister. Our lures are developed to maximise freshness to remain highly attractive to pests. As our lures are toxin-free there is no risk of secondary poisoning to wildlife, pets, livestock and working animals. Our Trigger and Strike mechanism gives the Goodnature A18 its certified A-Class humane status. This Quick Start Guide has been developed to help you get the best results from

your trap. Your success is everyone's success so if you have any questions or need any tips, we're here to help - goodnaturetraps.co.uk

Trap safely

We've designed our traps to target specific pests only. To avoid injuring or killing protected wildlife or any other animal that's good for nature, it's important you follow the installation instructions to set up your trap correctly.

This guide shows you how to make sure each trap is set up to be both effective and safe. For more trap safety advice, tips to maximise success and support biodiversity in your own backyard, visit goodnaturetraps.co.uk

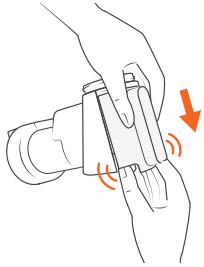
Our A18 trap is approved for trapping grey squirrels in the UK. If you'd like to trap rats, mice or stoats, check out our A24 Trap. All use of traps is subject to legislation set out in the Spring Traps Approval Order for each country.

We're here to help

Drop us an email or pick up the phone - we'd love to help you get rid of your grey squirrel problem.

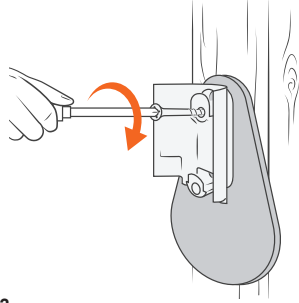
📞 01488 681091 ✉ support@goodnaturetraps.co.uk

Installing your trap



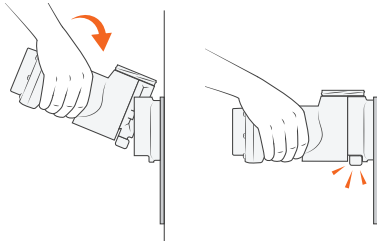
1. Separate the Tree Mount from the Trap Body

Using your forefinger and thumb, press the Black Tabs inwards and ease the orange Trap Mount along and off the Trap Body.



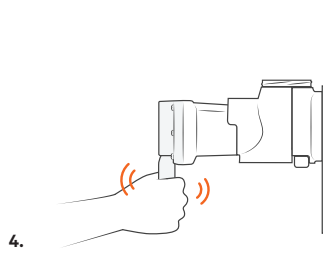
2. Attach the Tree Mount & Back Plate

Align the holes in the Back Plate with the Tree Mount holes. Screw into a straight tree or post, 1.5m (5 ft) above the ground. **Do not overtighten the screws.**



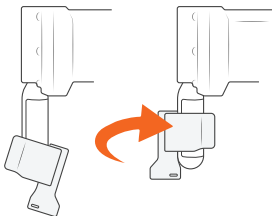
3. Attach the Trap Body to the Tree Mount

Tilt the Trap Body backwards slightly and lower it onto the top locking tab of the Trap Mount. As you press downwards the Trap Body will be guided in toward the Trap Mount and lock in with a click.



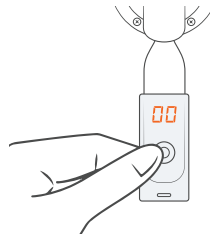
4. Power up your Trap

Remove the black cap from the gas canister. Be careful to keep the screw thread clean and free of debris. Screw the canister firmly into the trap. **Hand tighten only.**



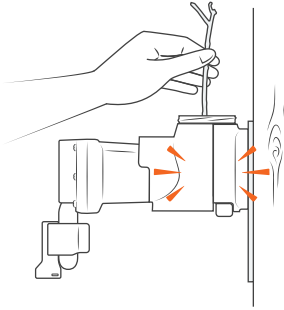
5. Attach the Digital Strike Counter

Slightly wet the inside of the rubber strap for lubrication and rotate the Counter anti-clockwise as you ease it up the canister. **The Counter display must face directly away from the tree.**



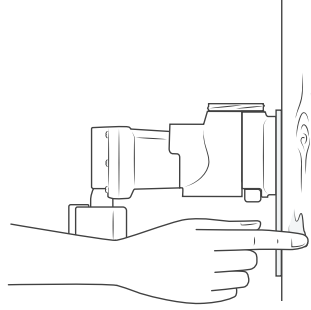
6. Zero the Digital Strike Counter

Zero the Counter by pressing the button and holding it down until the display shows '00'. The Counter goes to sleep a few seconds after the button is released.



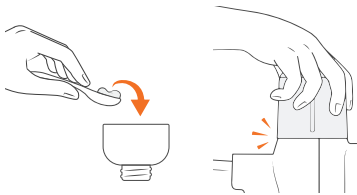
7. Test fire your Trap

To test fire the trap, reach a pen or twig down through the top of the trap and push the Trigger gently to the side. The Striker will fire with a bang and then retract. **WARNING: Always keep your hands clear of trap entrances and always treat the trap as live.**



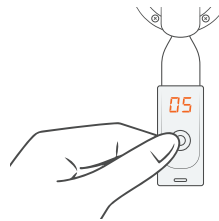
8. Pre-feed the tree

Place a small amount of Lure and wipe it beneath the trap as 'pre-feed'. This enhances your trapping success as more lure helps attract the squirrels to your trap.



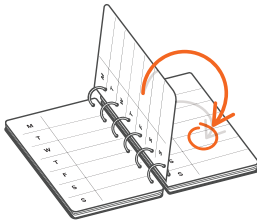
9. Add Lure & replace the Shroud Cap

Scoop a grape sized dollop of Lure into the Lure Basket. Screw the Lure Basket into the top of the trap, then screw on the Shroud Cap.



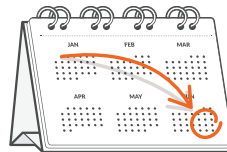
10. Checking the Digital Strike Counter

To check the tally on the Counter, quickly press and release the button. The display will show the number killed. **Pressing and holding the button down zeroes the Counter.**



11. Refresh Lure once a fortnight

To keep the Lure fresh and attractive to grey squirrels, it's important to refresh it at least once every fortnight. Simply, remove any remaining dried lure and add in a fresh new grape sized dollop. **The fresher the lure, the more attractive your trap will be.**

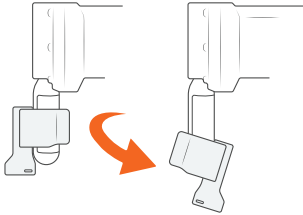


12. Replace the Gas every 6 months

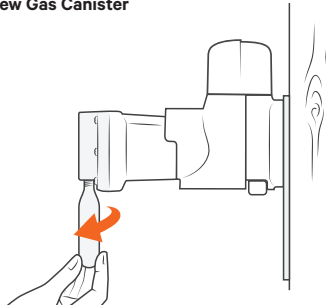
You must change the gas canister every 6 months regardless of how many kills you've counted. This ensures your trap is pressurised and always ready to strike.

Moving your trap

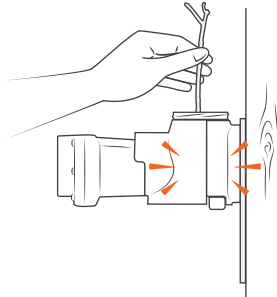
1. Remove Digital Strike Counter



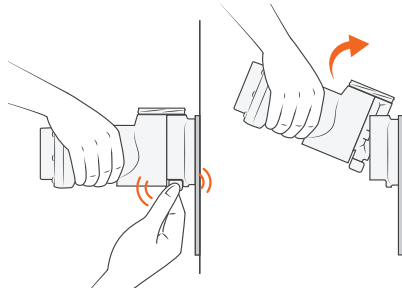
2. Unscrew Gas Canister



3. Test fire



4. Detach Trap



How to move traps safely

Rather than move your traps, it's better to add to your trap network and increase your pest free area.

To move the trap, first remove the Counter and unscrew the Gas Canister. You may hear any remaining gas in the canister escaping. This may cause the canister to freeze rapidly, so it's a good idea to unscrew the Gas Canister using a cloth to protect your hands.

WARNING - Remove final charge from the trap

Although the Gas Canister has been removed, the Trap may still be live with one charge remaining in its chamber. Safely test fire your trap by removing the Shroud Cap and the Lure Basket, and using a pen/twig

reach down through the top of the trap and push the Trigger to one side. If there is still gas in the trap, the orange Striker will be triggered, if nothing happens, all gas has been flushed out and the trap is safe to move.

Always treat the trap as live until you have de-gassed and test fired it. If the trap doesn't fire when triggered, the trap has successfully been de-gassed.

With the trap de-gassed, your trap is now safe to detach from the Trap Mount. Using your thumb and forefinger, squeeze the Black Tabs and with upward pressure pull the trap up and off the Trap Mount.

Always keep fingers clear of trap entrances.

Declaration & warnings

EC and UK Declaration of Conformity of machinery (original)

This declaration relates exclusively to the machinery in the state in which it was placed on the market, and excludes components which are added and/or operations carried out subsequently by the final user.

Product: Rat Trap / Rat and Mouse Trap, A24; including trap mount kit and blocker accessories.

Manufacturer: Goodnature Limited, 8 Horner Street, Newtown, Wellington 6021, NEW ZEALAND

Technical File Authorised Representative:
Gallagher Europe BV
Bornholmstraat 62A, 9723 AZ Groningen, Netherlands

This product fulfils all relevant provisions of the Machinery Directive 2006/42/EC and the UK Statutory Instrument 2008 No. 1597 Supply of Machinery (Safety) Regulations 2008.

Signed for an on behalf of: Goodnature Limited, Wellington

Place and date of Issue:
Goodnature Limited, 8 Horner Street, Newtown, Wellington 6021, NEW ZEALAND, 10th January - 2020

Name, Function, Signature:
Craig R. Bond, Director



Warnings

- USE ONLY Goodnature CO₂ Canisters. Use of other canisters will void warranty
- NEVER use a petroleum-based lubricant in your trap
- ALWAYS store CO₂ Canisters below 49°C
- NEVER leave CO₂ Canisters in a vehicle on a hot day
- ALWAYS dispose of used CO₂ Canisters responsibly
- NEVER crush CO₂ Canisters or put in a fire
- NEVER allow children to play with or around traps
- NEVER submerge your trap
- NEVER use a damaged trap
- NEVER modify your trap
- ALWAYS act responsibly
- USE ONLY as recommended in this quick start guide
- ALWAYS wear appropriate safety gear when setting and firing a trap
- DO NOT install the CO₂ Canister until the trap is correctly mounted
- ALWAYS remove the CO₂ Canister and test-fire to remove final charge before removing the trap from its mounted position
- ALWAYS treat your trap as LIVE
- ONLY test fire your trap as directed: see section: Moving Your Trap
- ALWAYS remove the CO₂ Canister and test-fire to remove final charge before moving the trap
- ALWAYS test-fire to remove final charge from the trap after removing the CO₂ Canister and before removing it from the trap mount: see section: Moving Your Trap
- ONLY set traps at the height recommended in this guide and be considerate of others when choosing the traps location
- NEVER put hands or objects in the entrance of the trap
- NEVER fire and re-fire the trap in quick succession
- Contains gas under pressure; may explode if heated
- Protect from sunlight. Store in a well-ventilated place
- UN2037 / EN16509
- Carbon Dioxide CO₂, CAS: 124-38-9, 16g



NOT FOR HUMAN CONSUMPTION

Lure contains nuts, milk & soya products.



goodnaturetraps.co.uk



Please recycle after use. This material has been printed using vegetable oil-based/mineral oil-free inks. Printed on uncoated woodfree paper produced from eucalyptus fibres and sourced from sustainable forests.

33-087_REV-05