

Il montaggio del prodotto deve essere eseguito da personale specializzato. - *The mounting of the product it must be realized from skilled personnel.*

LEGENDA / LEGEND



Bloccare con frenafili: L= Leggera - M= Media - S= Forte
Lock with the threadlocker: L= Light - M= Medium - S= Strong



Lubrificare ✓ / Lubricate ✓
Non lubrificare ✗ / Do not lubricate ✗
Solo primi filetti ◆ / First threads only ◆



Parte della dotazione originale
Original equipment manufacturer's part



Installare come da indicazioni a corredo della moto
Install as indicated by motorcycle kit



Sostituire la parete OEM
Replace the OEM part

LATO DESTRO RIGHT SIDE

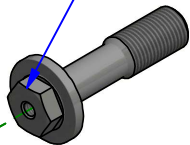


3

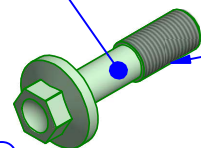
M5x35



14



LATO SINISTRO LEFT SIDE



OEM

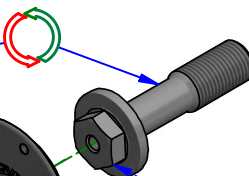
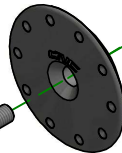


L

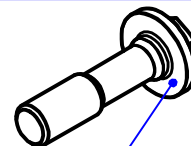


3

M5 x 16



14



VALIDO PER ENTRAMBI I LATI
VALID FOR BOTH SIDES

CNC RACING

ISTRUZIONI
INSTRUCTIONS

TT360

Rev.00

MANUTENZIONE E PULIZIA: AVVERTENZA - MAINTENANCE AND CLEANING: WARNING

PARTI ANODIZZATE e/o LEXAN: NON USARE sgrassatori a base acida o alcalina. Usare saponi neutri. Lavare a moto fredda, mai calda. No idropulitrice.

ANODIZED and / or LEXAN PARTS: DO NOT USE acid or alkaline based degreasers. Use neutral soaps. Wash on a cold bike, never hot. No pressure washer.