



 **DISCLAIMER** 

Evotech Performance recommend that brake and clutch levers be fitted by a fully trained mechanic.

If you chose to fit the any aftermarket brake or clutch levers without sufficient training or advise from Evotech Performance then you do so at your own risk.

Evotech Performance accept no responsibility for any incorrect fitment.



EVOTECH PERFORMANCE BRAKE AND CLUTCH LEVERS

Instruction Contents

Section 1 - Cable Clutch

Section 2 - Hydraulic Brake and Clutch

Section 3 - Ducati Hydraulic Brake and Clutch

Section 4 - Aprilia Tuono V4/RSV4 2015 Cable Clutch

Section 5 - Coloured adjuster replacement

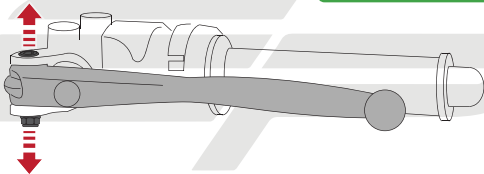


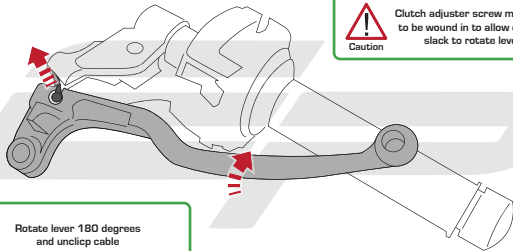
Section 1 - Cable Clutch



Caution

Completely remove security nut
from underneath first
then remove the bolt

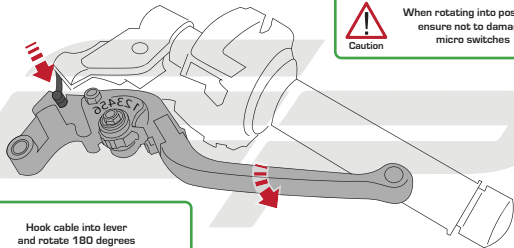


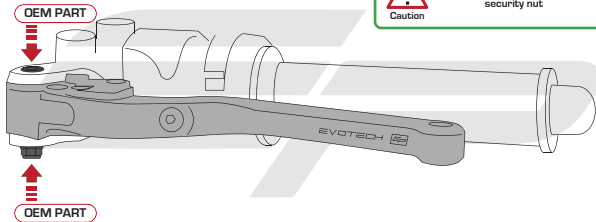


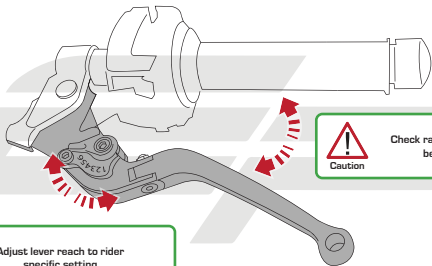
Caution

Clutch adjuster screw may need to be wound in to allow enough slack to rotate lever

Rotate lever 180 degrees
and unclip cable







Adjust lever reach to rider
specific setting



Caution

Check range of movement
before riding

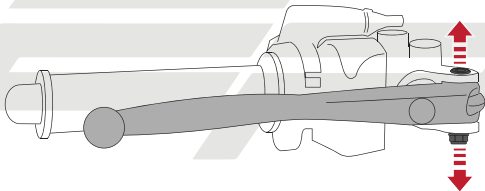


Section 2 - Hydraulic Brake and Clutch



Caution

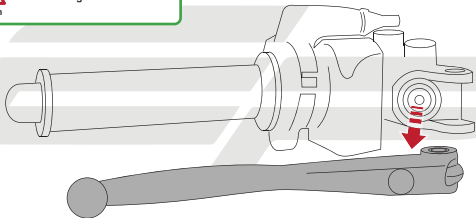
Completely remove security nut
from underneath first
then remove the bolt





Caution

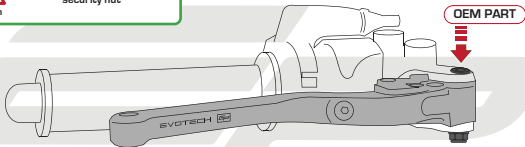
Remove lever ensuring not
to damage rubber seal





Caution

DO NOT over-tighten
security nut



OEM PART



Caution

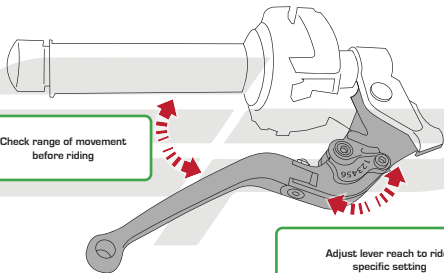
When placing into position
ensure not to damage
micro switches

OEM PART



Caution

Check range of movement
before riding



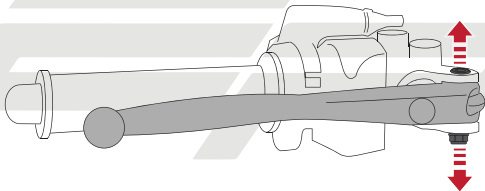
Adjust lever reach to rider
specific setting



Section 3 - Ducati Hydraulic
Brake and Clutch



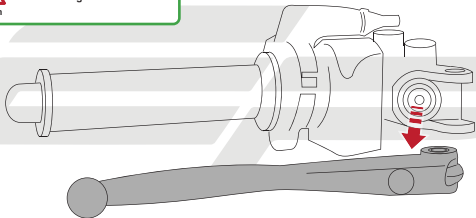
Completely remove security nut
from underneath first
then remove the bolt

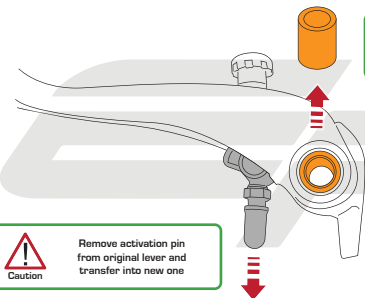




Caution

Remove lever ensuring not
to damage rubber seal





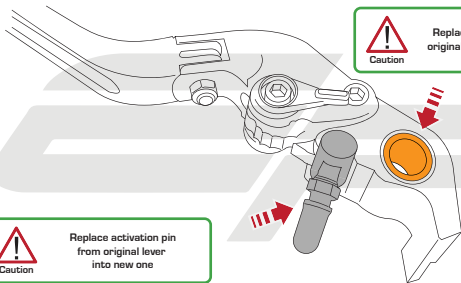
Caution

Remove brass bush from original lever and transfer into new lever



Caution

Remove activation pin from original lever and transfer into new one



Replace activation pin
from original lever
into new one

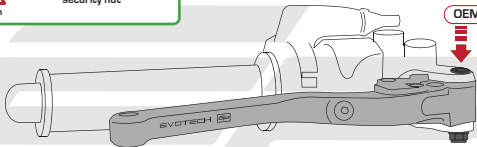


Replace brass bush from
original lever into new lever



Caution

DO NOT over-tighten
security nut



OEM PART



Caution

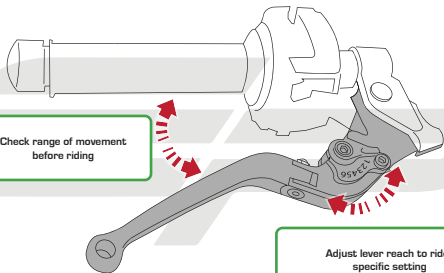
When placing into position
ensure not to damage
micro switches

OEM PART



Caution

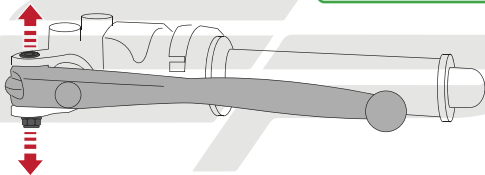
Check range of movement
before riding



Adjust lever reach to rider
specific setting

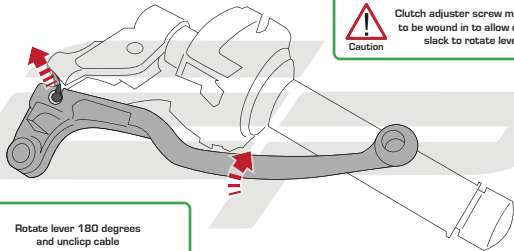


Section 4 - Aprilia Tuono V4 2015
and RSV4 2015 Clutch



Caution

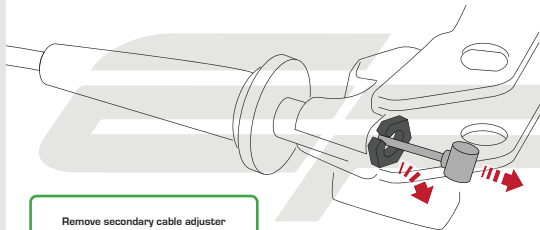
Completely remove security nut
from underneath first
then remove the bolt



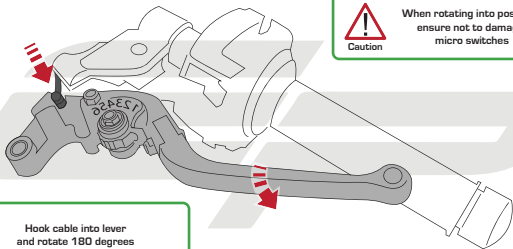
Caution

Clutch adjuster screw may need to be wound in to allow enough slack to rotate lever

Rotate lever 180 degrees
and unclip cable



Remove secondary cable adjuster
from inside lever

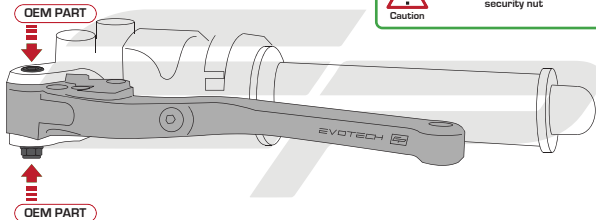


Hook cable into lever
and rotate 180 degrees



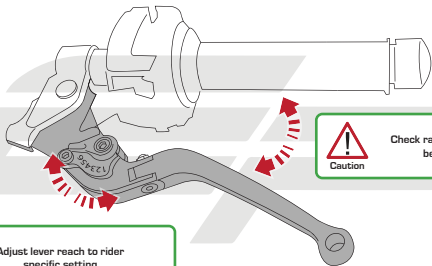
Caution

When rotating into position
ensure not to damage
micro switches



Caution

DO NOT over-tighten
security nut



Adjust lever reach to rider
specific setting



Caution

Check range of movement
before riding

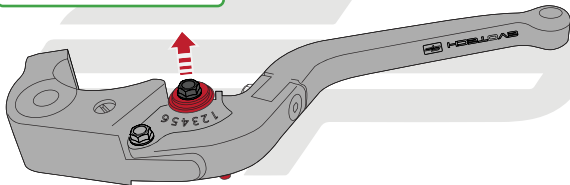
A large, light gray watermark of the stylized 'EP' logo is centered on the page, behind the main text.

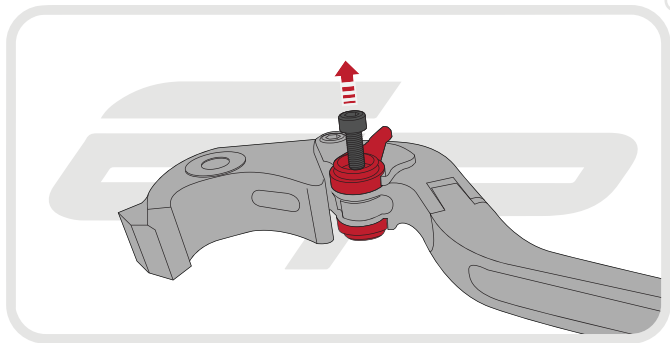
Section 5 - Coloured Adjuster Replacement

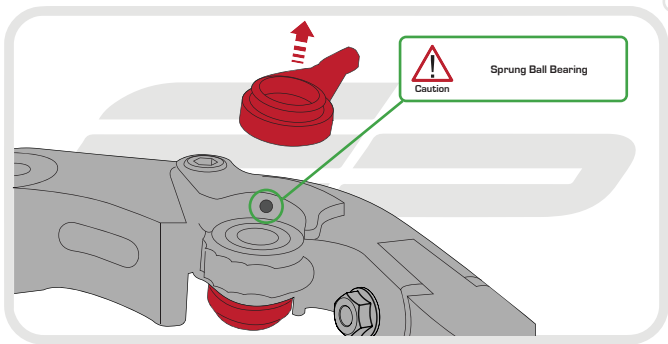


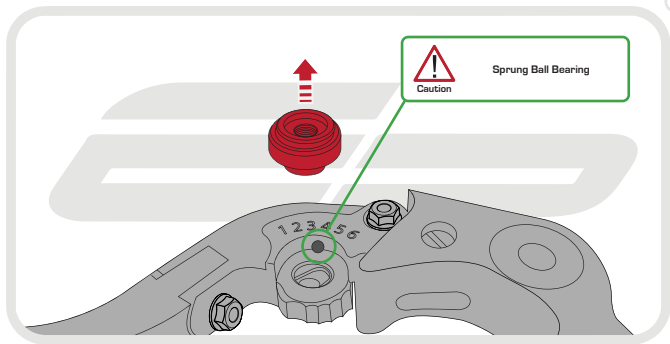
Caution

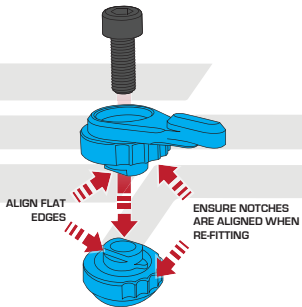
Completely remove security nut
from underneath

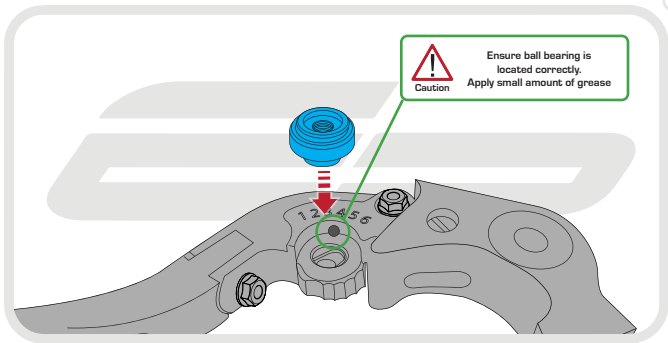


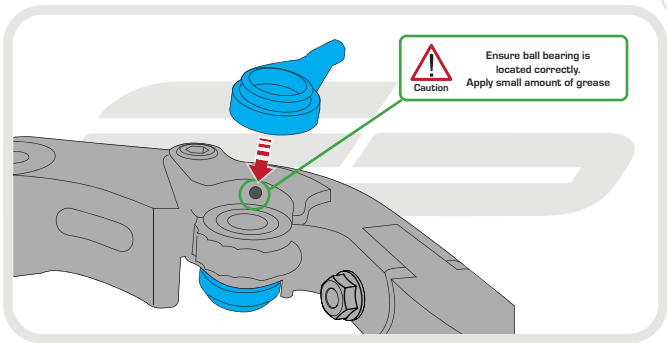


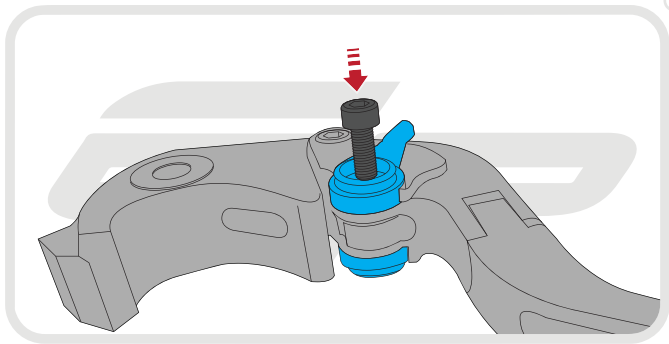














Caution

DO NOT over-tighten
security nut

