



 **DISCLAIMER** 

Evotech Performance recommend that brake and clutch levers be fitted by a fully trained mechanic.

If you chose to fit the any aftermarket brake or clutch levers without sufficient training or advise from Evotech Performance then you do so at your own risk.

Evotech Performance accept no responsibility for any incorrect fitment.

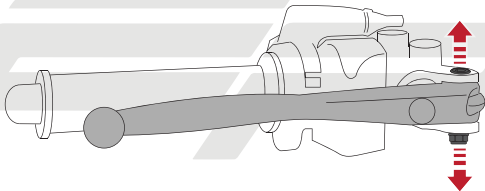


Section 2 - Hydraulic Brake and Clutch



Caution

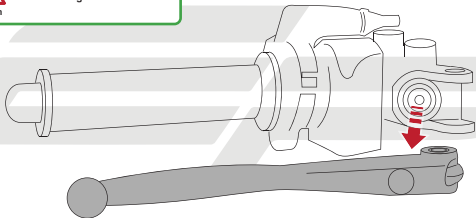
Completely remove security nut
from underneath first
then remove the bolt





Caution

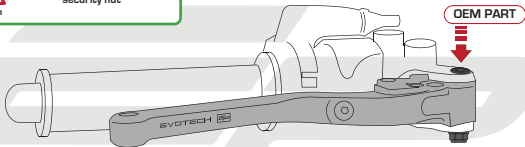
Remove lever ensuring not
to damage rubber seal





Caution

DO NOT over-tighten
security nut



OEM PART



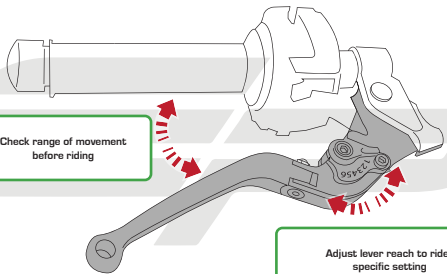
Caution

When placing into position
ensure not to damage
micro switches

OEM PART



Check range of movement
before riding



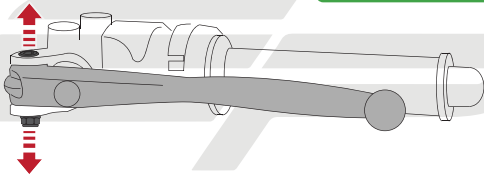
Adjust lever reach to rider
specific setting

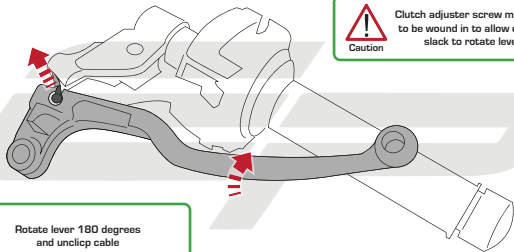


Section 4 - Aprilia Tuono V4 2015
and RSV4 2015 Clutch



Completely remove security nut
from underneath first
then remove the bolt

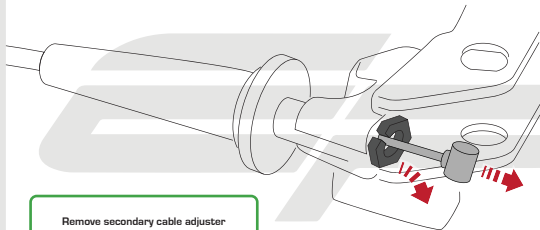




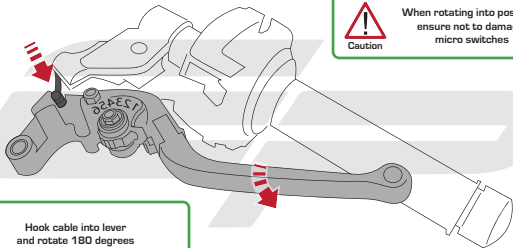
Caution

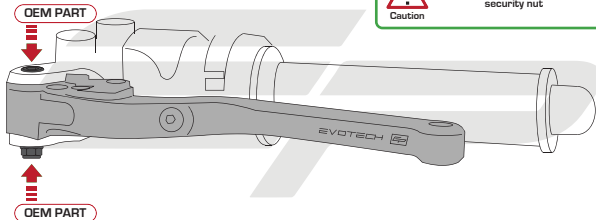
Clutch adjuster screw may need to be wound in to allow enough slack to rotate lever

Rotate lever 180 degrees
and unclip cable



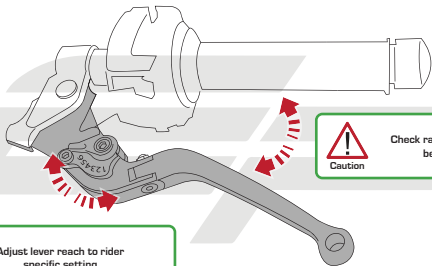
Remove secondary cable adjuster
from inside lever





Caution

DO NOT over-tighten
security nut



Adjust lever reach to rider
specific setting



Caution

Check range of movement
before riding

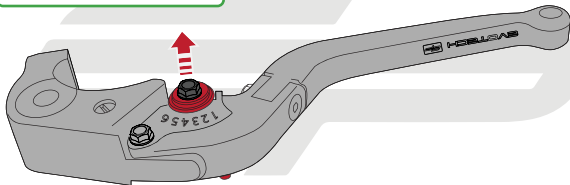


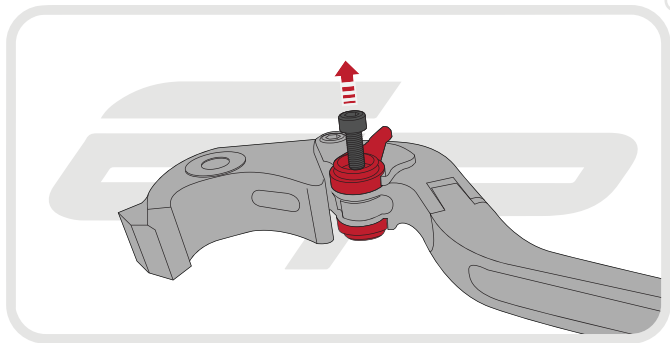
Section 5 - Coloured Adjuster Replacement

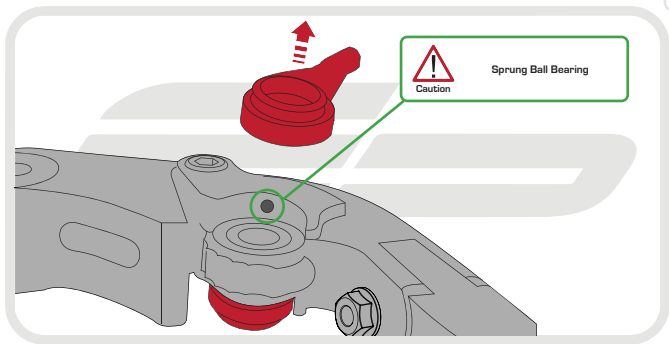


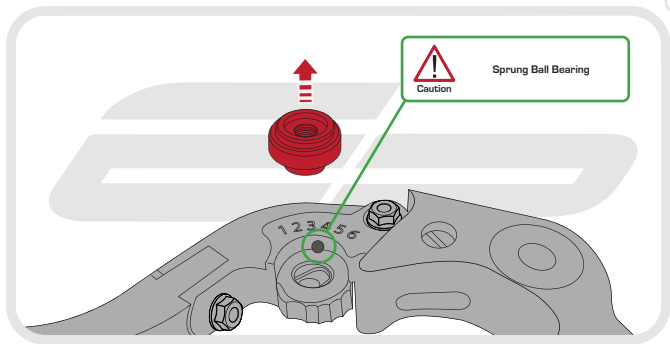
Caution

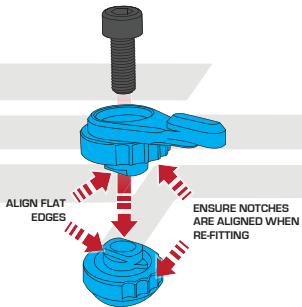
Completely remove security nut
from underneath

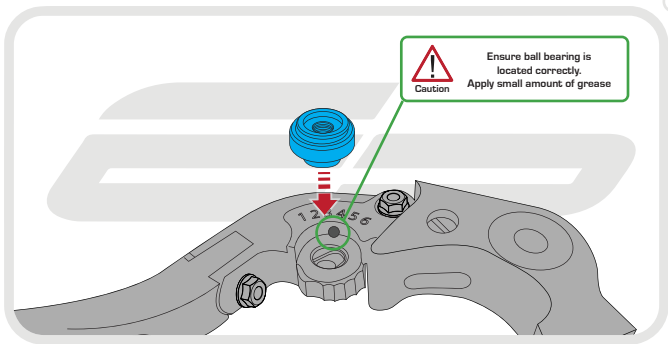


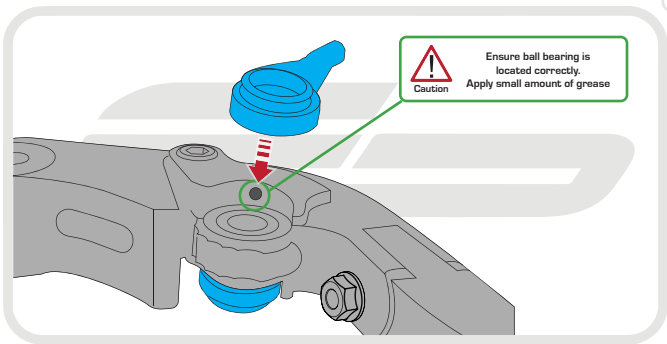


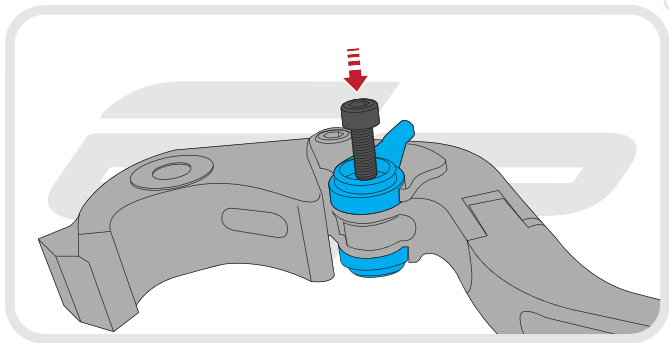














Caution

DO NOT over-tighten
security nut

