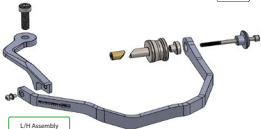


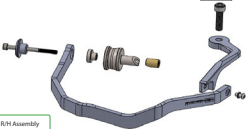


Kit Contents P114014654

- 1 x Main Bracket R/H
- 1 x Mounting Bracket R/H
- 1 x M10 x 35 x 1.25-55 L/H
- 1 x Main Bracket L/H
- 1 x Mounting Bracket L/H
- 1 x M10 x 35 x 1.25-55 R/H
- 2 x Bar End Inner
- 2 x Bar End Outer #1
- 2 x Bar End Outer #2
- 2 x Washer M5 55 BLK
- 2 x M5 x 75mm 55 Caphead
- 2 x M5 x 12mm Button head



L/H Assembly



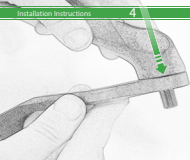
R/H Assembly



**R/H Mirror
L/H Thread**

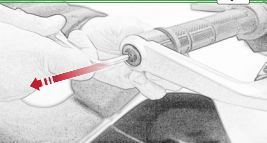


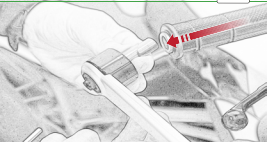




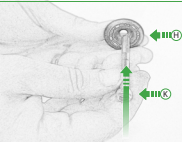


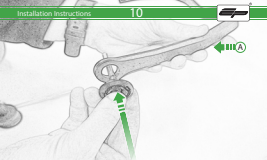
**Do Not Fully
Tighten**





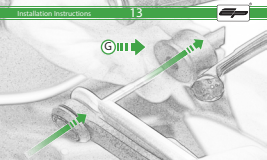








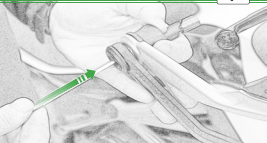


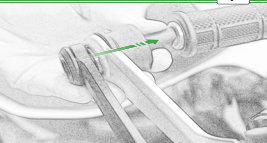




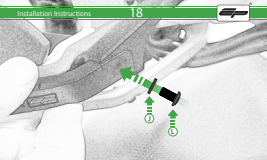
CEM PART









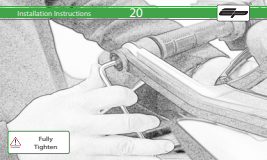




**Fully
Tighten**



 Fully
Tighten





Repeat Process
For Left Hand Side
R/H Mirror R/H Thread