

SEPPIC

Texture 

MONTANOV™ L

*A green O/W emulsifier
for a wide range of textures and applications*

spray lotion cream butter

Effective even at low doses

Ultra-soft, light texture

WWW.SEPPIC.COM

A high-performance emulsifier, effective even at low doses

- effective from 1% (plant oils, minerals, esters, silicones) and up to 5%
- emulsifies at up to 60% fatty phase

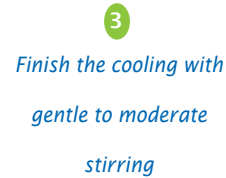
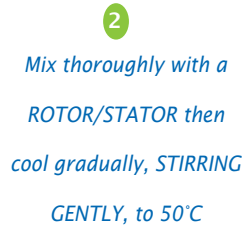
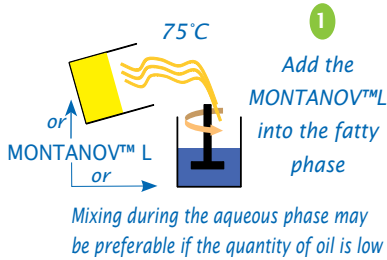
MONTANOV™ L OIL / natural	1 %		
	20 %	40 %	60 %
C12-15 Alkylbenzoate	++	+	+++
Caprylic/Capric Triglyceride	++	++	+++
Isononyl Isononanoate	++	++	NS
Apricot kernel oil	++	+++	+++
Mineral Oil	++	++	NS
Dimethicone	+++	+++	NS
Cyclopentasiloxane	NS	+++	NS

Key:

- +++ : Stable for 3 months at AT and 45°C
- ++ : Stable for 3 months at AT and 1 month at 45°C
- + : Stable for 3 months at AT and 1 week at 45°C
- NS : Unstable for 1 month at AT and 45°C

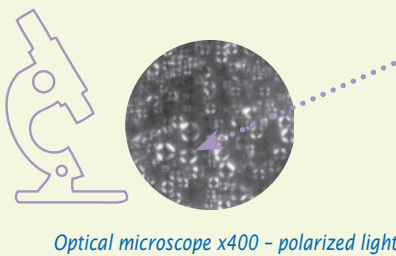
Formula tested: MONTANOV™ L 1% / Oil Qs / SIMULGEL™ INS100 0.5%
(Hydroxyethyl Acrylate / Sodium Acryloyldimethyl Taurate copolymer & Isohexadecane & Polysorbate-60) / Phenoxyethanol & Ethylhexylglycerin 1% / Water Qsp 100%

Our recommendations for use:

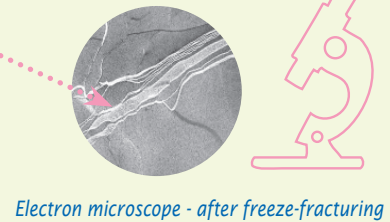
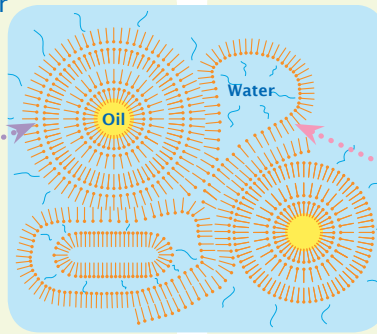


An active emulsifier that promotes liquid crystals! A double structure for double the effect

Oleosomes: double lamellar layer surrounding the droplets of oil



Lamellar phases in the continuous aqueous phase



EFFECT NO. 1 - Stability of the emulsion

Rigid shell
→ Prevents coalescence

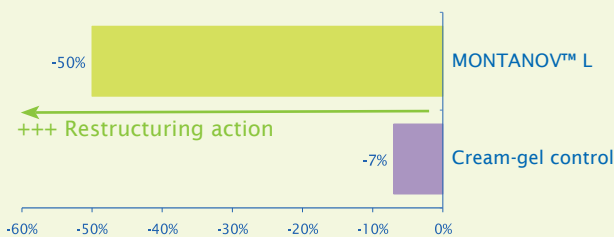
Elastic network
→ In suspension, viscosity

EFFECT NO. 2 - Strengthening of the lipid barrier + MOISTURIZATION
(the perfect vehicle for all active ingredients)

A structure that is similar to that of the lipids found within the epidermis, thus giving perfect affinity with the skin
→ Restructuring action

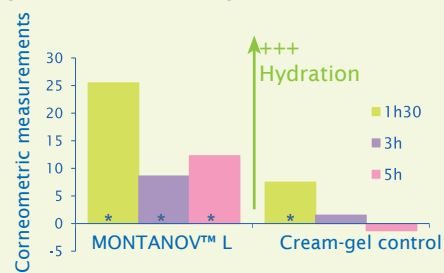
Water baths for gradual salting out
→ Moisturizing effect for up to 5hrs after application

% reduction of transepidermal water loss / non-treated control
In vitro measurement
Gelatin cells (SEPPIC 57CO0010 method)



Formula tested: MONTANOV™ L 5% / Isononyl Isononanoate 20% / SIMULGEL™ EG 0.5% / Water Qsp 100%

Moisturizing effect of MONTANOV™ L
In vitro corneometric measures
Single application to the leg - 20 volunteers with dry skin



*significant results / untreated area (p<0.05)
Formula tested: MONTANOV™ L 3% / Cetearyl Ethylhexanoate 20% / SIMULGEL™ EG 0.5% / Water Qsp 100%

ANTI-FRIZZ & CONDITIONING HAIR SPRAY - 7032

MONTANOV™ L	0.50 %
Cyclopentasiloxane & Dimethiconol	2.00 %
SIMULGEL™ INS 100	1.20 %
Aqua/Water	Qsp 60 %
Aqua/Water	Qsp 100 %
Cetrimonium Chloride	0.50 %
SEPICIDE™ HB	1.00 %
Parfum/Fragrance	0.10 %
Lactic Acid	Qs pH

Viscosity (1 month at AT) ≈ 850 mPa.s
(Brookfield LV2 6rpm)

Our recommendations for ultra-fluid formulas and sprays:

- MONTANOV™ L content ≤ 3%
- Synergy with stabilizing polymers SIMULGEL™ NS or SIMULGEL™ INS100 ≤ 1.2%



*Ultra-soft,
light texture*

BODY FIRMNESS INTENSE MILK - 7103A
Developed in accordance with ECOCERT® standard

Aqua/Water	Qsp 100 %
Sodium Hydroxide	Qs pH 5.5-6
Microcrystalline Cellulose & Cellulose Gum	0.40 %
Glycerin	2.00 %
MONTANOV™ L	2.00 %
Isopropyl Isostearate	4.00 %
Caprylic/Capric Triglyceride	4.00 %
Simmondsia Chinensis (Jojoba) Seed Oil*	3.00 %
Carthamus Tinctorius (Safflower) Seed Oil*	1.50 %
SEPIIFT™ DPHP	1.00 %
Water & Hordeum Vulgare Extract	10.00 %
Tocopherol	0.10 %
Dehydroacetic Acid & Benzyl Alcohol	0.60 %
Parfum/Fragrance	0.10 %

Viscosity (1 month at AT) ≈ 6 200 mPa.s (Brookfield LV4 6rpm)

24HR SOFT DEODORANT SENSITIVE SKIN - 7156

Aqua/Water	25.00 %
MONTANOV™ L	2.00 %
Isopropyl Myristate	1.00 %
Propylene Glycol & Phenoxyethanol & Methylparaben & Ethylparaben	1.00 %
SEPIOV™ EMT10	1.50 %
Aqua/Water	25.00 %
Aqua/Water	Qsp 100 %
LIPACIDE™ UG	1.00 %
Triethanolamine	Qs pH=6
Tetrasodium Glutamate Diacetate	0.30 %
MICROPEARL™ M305	1.00 %

Viscosity (1 month at AT) ≈ 3 600 mPa.s
(Brookfield LV2 6rpm)

Top tip for achieving fluid formulas: make a concentrated pre-emulsion with one part of water, then dilute it progressively to increase stability (refining is promoted by the viscosity of the concentrated emulsion)



DERMOPURIFYING MAKE-UP REMOVER - 7104

Aqua/Water	Qsp 100 %
Sclerotium Gum	0.15 %
Aqua/Water	Qsp 30 %
LIPACIDE™ C8G	1.00 %
Sodium Hydroxide 48%	Qs pH 5.5
PROTEOL™ OAT	2.00 %
Glycerin	2.00 %
MONTANOV™ L	4.00 %
Caprylic/Capric Triglyceride	4.00 %
Squalane	4.00 %
Corylus Avellana (Hazel) Seed Oil*	2.00 %
Cocos Nucifera (Coconut) Oil*	4.00 %
Prunus Amygdalus Dulcis (Sweet Almond) Oil*	2.00 %
Beeswax	0.30 %
Water & Hordeum Vulgare Extract*	10.00 %
Dehydroacetic Acid & Benzyl Alcohol	0.60 %
Tocopherol	0.10 %

Viscosity (1 month at AT) ≈ 3580 mPa.s
(Brookfield LV2 6rpm)

SWEET BUTTER BODY CARE 7006B

MONTANOV™ L	3.00 %
MONTANOV™ 14	2.00 %
Caprylic Capric Triglycerides	12.00 %
LANOL™ P	3.00 %
SEPIIFT™ DPHP	0.50 %
SEPIFEEL™ ONE	0.50 %
SEPIPRESS™ M	1.00 %
Triethanolamine	Qs pH=7 %
Aqua/Water	Qsp 100 %
SIMULGEL™ EG	2.00 %
Cyclopentasiloxane	5.00 %
Cyclopentasiloxane & Dimethiconol	5.00 %
AQUAXYL™	3.00 %
EUXYL™ PE9010	1.00 %
Colorants	Qs
Parfum/Fragrance	0.40 %

Viscosity (1 month at AT) ≈ 500 000 mPa.s
(Brookfield RV7 5rpm)

Top tip for achieving light body butters: combine MONTANOV™ L and MONTANOV™ 14 to give a thick texture without greasiness



Can be used in a large range of textures, from sprays to butters, and in many different applications: skincare, suncare, haircare, make up, etc.

SPRAYABLE SUN CARE FORMULATION HIGH PROTECTION SPF >30 - 7085B

MONTANOV™ L	1.00 %
C12-15 Alkyl Benzoate	17.00 %
Dimethicone	3.00 %
Octocrylene	6.00 %
Ethylhexyl Methoxycinnamate	6.00 %
Bis-Ethylhexyloxyphenol	
Methoxyphenyl Triazine	3.00 %
Aqua/Water	Qsp 100 %
Cyclohexasiloxane & Cyclopentasiloxane	5.00 %
SIMULGEL™ INS100	0.50 %
AQUAXYL™	3.00 %
DL α Tocopheryl Acetate	0.50 %
SEPICIDE™ HB	1.00 %
Parfum/Fragrance	0.20 %
Methylene Bis-Benzotriazolyl Tetramethylbutylphenol	10.00 %
Citric Acid 25%	Qs pH5

Viscosity (1 month at AT) ≈ 415 mPa.s
(Brookfield LV2 6rpm)

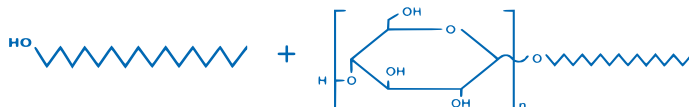
Top tip for suncare: combine a mineral sunscreen with a co-emulsifier such as MONTANOV™ S or SEPIFEEL™ ONE for a good load dispersion

A glucolipidic structure that is in harmony with nature:



- ✿ 100% vegetable origin (GMO-free)
- ✿ Green synthesis (solvent-free, ethylene oxide-free and preservative-free)
- ✿ Excellent dermo-compatibility / biodegradability

INCI name: C14-22 Alcohols & C12-20 Alkyl Glucoside



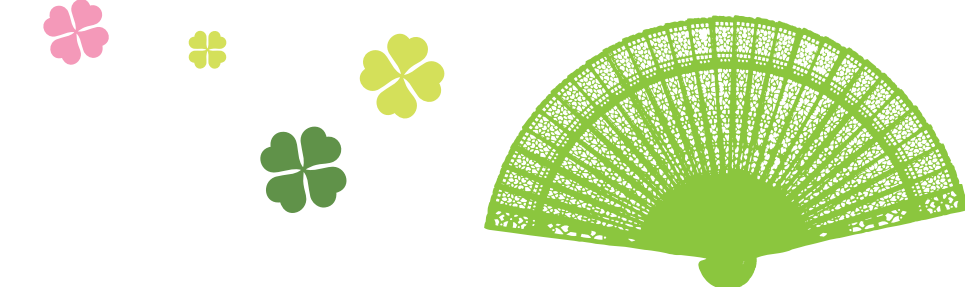
Avantages : - Stable ether-glucoside bond, even in extreme conditions (pH= 3-11)
 - Compatible with all kinds of active ingredients: anionic, cationic, etc.

Dosage : 0.5 - 5%

Characteristics : - Ultra-white emulsions
 - Ultra-soft, light texture
 - Easy application even when used in high-viscosity products (shear thinning profile with moderate thixotropy)

Regulatory status :

US CANADA	EUROPE	JAPAN	AUSTRALIA
Cosmetics OTC (excipient)	Cosmetics	Cosmetics	Cosmetics



Nota:

The analytical specifications warranted are only those mentioned on the certificate of analysis supplied with each delivery of the product. Except as set forth above, SEPPIC* makes no warranties, whether express, implied or statutory, as to the product which is the subject of this document. Without limiting the generality of the foregoing, SEPPIC* makes no warranty of merchantability of the product or of the fitness of the product for any particular purpose. Buyer assumes all risk and liability resulting from the use or sale of the product, whether singly or in combination with other goods. The information set forth herein is furnished free of charge and is based on technical data that SEPPIC* believes to be reliable. It is intended for use by persons having technical skill and at their own discretion and risk. Since conditions of use are outside SEPPIC*'s control, SEPPIC* makes no warranties, express or implied, and assumes no liability in connection with any use of this information. Nothing herein is to be taken as a license to operate under or a recommendation to infringe any patents.

© SEPPIC – MONTANOV™ is a registered trademark SEPPIC* – SEPPIC is a subsidiary of the AIR LIQUIDE group.

*SEPPIC being :

SEPPIC S.A.
FRANCE
Tel. : +33 (0) 1 42 91 40 00

SEPPIC UK Ltd
ENGLAND
Tel. : +44 208 577 8800

SEPPIC Italia Srl
ITALY
Tel. : +39 02 38009110

Head Office
75, quai d'Orsay
75007 PARIS
FRANCE

SEPPIC Inc.
USA
Tel. : +1 973 882 5597

SEPPIC China
CHINA
Tel. : +86 (21) 64 66 01 49

SEPPIC Brasil
BRAZIL
Tel. : +55 11 3242 3911

SEPPIC GmbH
GERMANY
Tel. : +49 (0) 2203-89830-20

SEPPIC Asia Singapore
SINGAPORE
Tel. : +65 6278 6711