



User guide

iMo Pivot



CONTENTS

Safety Instructions	4
Product Features	6
Product and Components	7
Identify each part	8
Making connecting to your PC	9
Driver Program Installation (For Windows OS)	10
USB Monter	10
Touch	11
Configuration Touchside Utility	15
Driver Program Installation (For Mac OS)	21
USB Monter	21
Touch	21
Configuration Touchside Utility	23
Using Touch USB sub monitors	26
Troubleshooting	28
Specifications	31
FCC Information	32

※ It is required to install the USB monitor driver and the touch driver in order to use "IMO touch" monitor properly.



Safety Instructions

Precautions

Before using this unit please read these operating instructions carefully.

Take special care to follow the warnings indicated on the unit itself as well as the safety suggestions listed below. Afterwards keep them handy for future reference.

Safety

1. Power Source – The unit should be connected to USB Cable only of the type described in the operating instructions or as marked on the unit.
2. Power Cord USB Cable Protection – USB Cable should be routed so that they are not likely to be walked on or pinched by items placed upon or against them.
Never take hold of the USB Cable if your hands are wet, and always grasp the plug body when connecting or disconnecting it.
3. Periods of non-use – When the unit is not in use turn off the power. When left unused for a long period of time, the unit should be unplugged from the USB slot of the PC.

Installation

1. Water and Moisture – Do not use this unit near water, for example, near a bathtub, washbowl, swimming pool or the like.
Damp basements should also be avoided.
2. Heat – The unit should be situated away from heat sources such as radiators and the like. It also should not be placed in temperatures less than 5°C (41°F) or greater than 35°C (95°F).

Placement

1. Ventilation – The unit should be situated so that its location or position does not interfere with its proper ventilation.
2. Foreign Material – Care should be taken so that objects do not fall into and liquids are not spilled into the unit.
Do not subject this unit to excessive smoke, dust, mechanical vibration or shock.
3. Stacking – Do not place heavy objects on top of the unit.
4. Surface – Place the unit on a flat and level surface.
5. Wall or Ceiling mount – The unit should not be mounted on the wall or ceiling unless specified in the operating instructions.



Safety Instructions

Maintenance

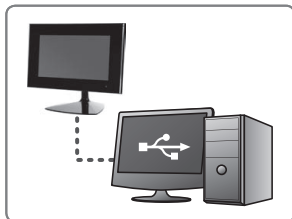
Do not use any type of abrasive pad, scouring powder or solvent such as alcohol or benzene.

Service

1. Damage Requiring Service – The unit should be serviced by a qualified service person when:
 - a. The Power supply cord(USB Cable) has been damaged; or
 - b. Objects have fallen or liquid has been spilled into the unit; or
 - c. The unit has been exposed to rain; or
 - d. The unit does not appear to operate normally or exhibits a marked change in performance; or
 - e. The unit has been dropped, or the enclosure is damaged.
2. Servicing – The user should not attempt to service the unit beyond described in the operating instructions.
All other servicing should be referred to a qualified service personnel.



Product Features



USB

No power cable required.
Simple access to PC with USB cable.
High speed 2.0 USB interface.



Touchscreen

Full Touchscreen Interface



Pivot function

Pivot function.



High quality LCD panel

Bright 7" TFT active matrix LCD screen (800x480)
Brightness adjustable.



Removable Stand

Application of removable type stand for portable use.



Product and Components

This product is packaged with the following components.



Frame



Stand



Portable Stand



Installation CD



USB Cable



Manual

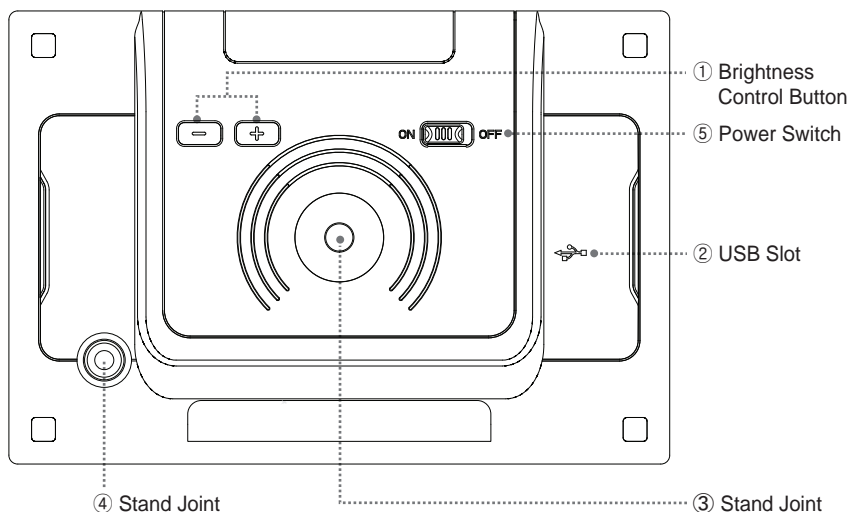


Identify each part

The back of the product

It describes the appearance and the name of each part.

Some differences in appearance and function might occur depending on the model



No.	Name	Description
1	Brightness Control Button	[+] Set Brightness up.
		[-] Set Brightness down.
2	USB Slot	Connect monitor to PC by using USB Cable.
3	Stand Joint	Swivel type stand joint.
4		Stick type stand joint.
5	Power Switch	Switch the power on or off



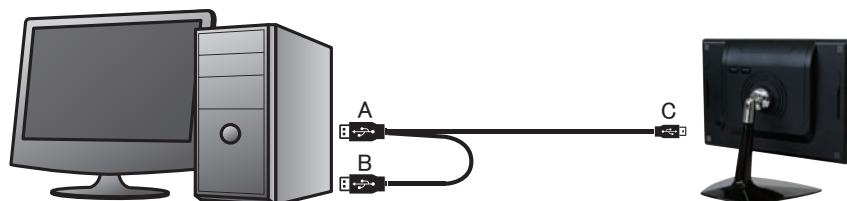
Making connecting to your PC



Connect the USB cable to the PC's USB port and to the device.

Note

Make sure that the PC's power is turned off when connecting the cable.



When connecting the USB cable to the PC's USB port, connect [A] part to the PC and [C] part to the device. Connect [B] part to the PC's other USB port when there is insufficient power supply from only one USB connection.

Note

This product is powered by USB cable only.



Driver Program Installation (For Windows OS)

USB Monitor

Turn on the PC and connect the PC with the device by using the USB cable included with USB sub-monitor (AT-7). When the device is connected to the PC using USB cables, adequate power will be supplied to the device.



1. Insert the included installation CD.

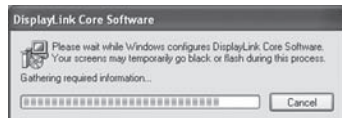
When the CD is inserted, the driver Installer image will be displayed

- USB Monitor Driver
- Touch Driver
- Exit

Note

- When 'Auto Install' processing is not activated, click on the "AutoRun" file on the driver CD for Installation.
- Power or USB cable disconnection, during the process of installation may cause serious error on the PC or OS system.

2. Select the 'USB Monitor Driver' button.



3. After selecting the 'USB Monitor Driver', the installation process will be displayed.

Click [Agree] to proceed with the installation process. Terms of use will be displayed. Click [Agree].

Note

- Please operate the PC with the owner's ID and password for proper installations. Please read the terms of use thoroughly before clicking [Agree] button.

4. USB installation program will be automatically started.



- When [AT-7] icon is formed at the right corner of the task bar, USB driver installation is completed.
- Remove the CD from the PC.
- Use [Remove Hardware Safely] function to remove the USB cable safely.
- Reboot the PC.



Driver Program Installation (For Windows OS)

Touch

Turn on the PC and connect the PC with the device by using the USB cable included with USB sub-monitor (AT-7). When the device is connected to the PC using USB cables, adequate power will be supplied to the device.



1. Insert the included installation CD.

When the CD is inserted, the driver Installer image will be displayed

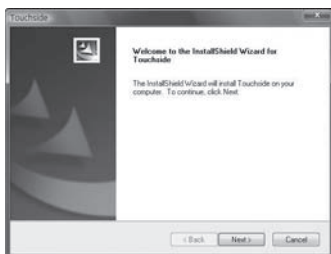
- USB Monitor Driver
- Touch Driver
- Exit

Note

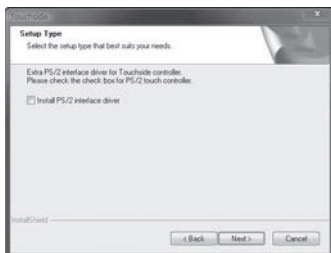
- When 'Auto Install' processing is not activated, click on the "AutoRun" file on the driver CD for Installation.
- Power or USB cable disconnection, during the process of installation may cause serious error on the PC or OS system.



2. Select the 'Touch Driver' button.



3. After selecting the 'Touch Driver' button, the driver package installation wizard will guide user to install Touchside driver software package. Click [Next] button to proceed installation.

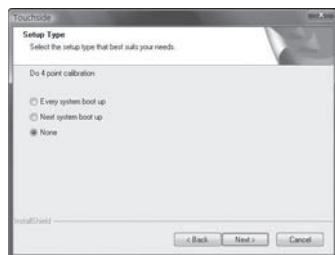


4. The Installation wizard pops up below dialog to hint user to check this check box if the PS/2 interface of touchscreen is going to be used. By default, this check box is unchecked. Then, press [Next] button to proceed installation.



Driver Program Installation (For Windows OS)

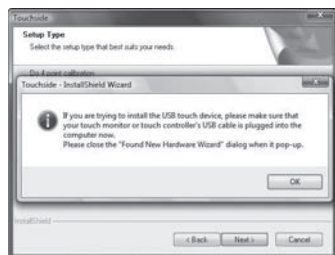
Touch



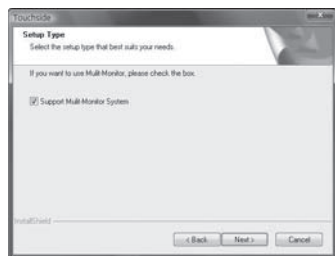
5. The installation pops up below dialog for calibration option. Touchside provides 3 options for calibration.

- Every System boot up : The 4-point calibration utility will launch automatically whenever the system boot up.
- Next System boot up : The 4-point calibration utility will launch automatically at next system boot up.
- None : The 4-point calibration utility will NOT launch automatically.

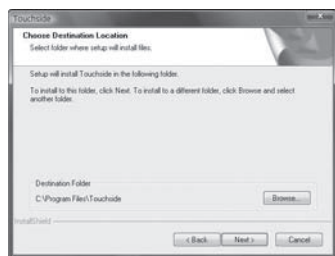
Choose the proper option, and click [Next] button to continue.



6. After selecting the 'Touch Driver' button, the driver package installation wizard will guide user to install Touchside driver software package. Click [Next] button to proceed installation.



7. Touchside driver package supports multi monitors. Please check the check box to support multi-monitor feature. The multi-monitor setting property page will show only when this check box is checked during installation. Press [Next] to continue.

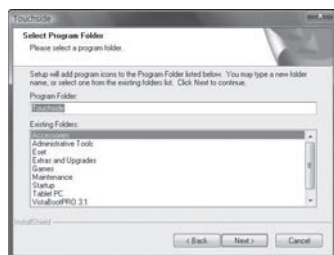


8. The installation wizard pops up below dialog to let user assign the target folder in local machine. Press [Next] to continue.

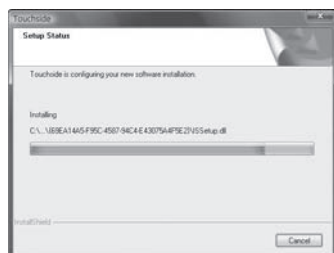


Driver Program Installation (For Windows OS)

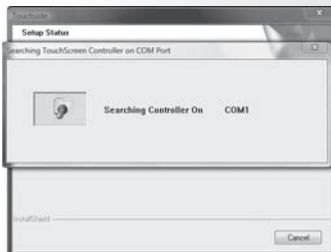
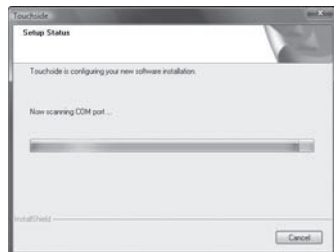
Touch



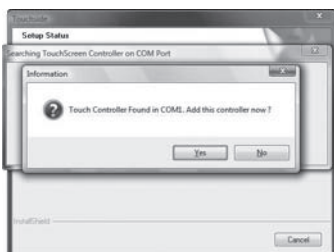
9. The installation wizard pops up below dialog to show the program folder. Press [Next] to continue.



10. The driver software files are being copied.



11. After files copied, the wizard begins searching Touchside devices on COM ports.



12. Once the serial Touchside device is found, the below dialog pops up for user to confirm to install kernel mode driver for this device.

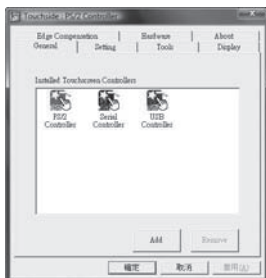


Driver Program Installation (For Windows OS)

Touch



13. After driver installed, below dialog pops up so that users do calibration now.



14. Finally, the Touchside utility is launched. If PS/2 interface of driver is installed, it needs to reboot system to make sure the driver is installed.



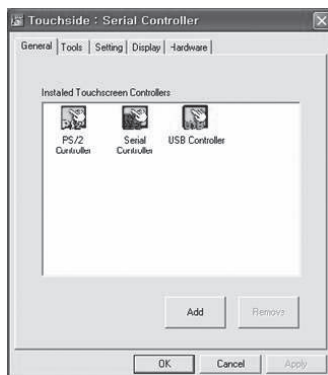
- When [Touch side] icon is formed at the right corner of the task bar, Touch driver installation is completed.
- Remove the CD from the PC.
- Use [Remove Hardware Safely] function to remove the USB cable safely.
- Reboot the PC.



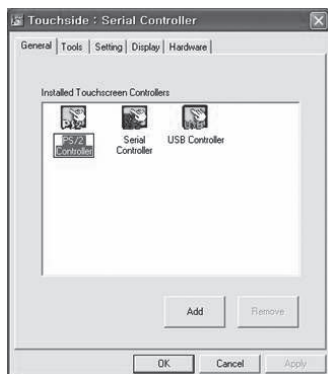
Driver Program Installation (For Windows OS)

Configuration Touchside Utility

■ General Property Page



- The general property page in TouchSide utility shows all of TouchSide touchscreen controllers installed as below, including RS232, USB and PS2 interfaces.



- User can select the controller list in the window to do configuration for it. When user use a mouse or other input device to select the controller device in the controller list window, The controller name will be shown in the title bar of the main window(the property sheet). Also, all of the other property pages will be updated for this selected controller. In some application, user may in place edit and change the controller name for easy identification.

- In addition, there are 2 function push buttons in this prope

1. Add

The function button is used for serial RS232 controllers only. Press this button to search the TouchSide serial controllers connected with the system COM ports. Whenever it finds a new TouchSide serial controller, a new serial controller icon object will be shown in the controller list window automatically.

USB TouchSide device supports plug and play, the icon object for USB controller will be shown in the controller list window automatically when the USB controller is connected with the system USB port. And, the icon object for the USB controller will disappear automatically as soon as the device was removed from the system USB port.

TouchSide PS2 driver support PS2 mice and TouchSide touchscreen controller. It can works with both PS2 mice and TouchSide touchscreen PS2 controller. After the TouchSide PS2 driver was installed, this utility assumes the PS2 touchscreen controller exists and is always shown in the controller list window.



Driver Program Installation (For Windows OS)

Configuration Touchside Utility

2. Remove

This function button is used for serial RS232 controllers only. This button will be greyed and disabled automatically when the selected controller in the controller list window is not RS232 type. Press to remove and uninstall the selected serial RS232 controller from the system. Then, this serial RS232 icon object in controller list window disappears automatically.

USB TouchSide device supports plug and play, the icon object for USB controller will be shown in the controller list window automatically when the USB controller is connected with the system USB port. And, the icon object for the USB controller will disappear automatically as soon as the device was removed from the system USB port.

TouchSide utility does not allow user to remove/uninstall the PS2 device driver dynamically.

To uninstall the TouchSide PS2 driver, user needs to go to Windows Device Manager to do un-installation.

In addition, after PS2 un-installation, it needs to system reboot to complete un-installation.

■ Monitor Property Page



- TouchSide driver utility supports multiple monitor and display system. To work with multiple monitor system, user needs to do proper configuration to map the touchscreen working area to the correct system display area. User can do such configuration with this property page shown as below,

Display

The system monitor display geometry was shown in the Monitors window in this page to show the locations of all of the monitors of the system.

Note

xtouchmon.exe is another utility for TouchSide touchscreen system. This tray icon utility can monitor the system monitor display configuration change and correct the touchscreen monitor mapping relationship automatically as soon as the system monitor display configuration changed. We strongly suggest the user to make sure xtouchmon.exe was launched for multiple monitor system.

- User can follow below instructions to do the configuration

1. Enable multiple monitor

Check this check box to enable multiple monitor support and uncheck it to disable multiple monitor support. When this function is disabled, the touchscreen will be mapped to the primary monitor automatically.

When this function is enabled, user can double click on the monitor area in the monitor geometry window to assign the monitor area where the touchscreen will be mapped. In other word, the touchscreen will work with the selected monitor. Then, the selected monitor area rectangle line will be changed to be white and the other monitor rectangles line will be grey.



Driver Program Installation (For Windows OS)

Configuration Touchside Utility

2. Map to main monitor when the system has only one monitor

When the multiple monitor function was enabled, and the system has only one monitor, Driver allows user to generate the mouse event for the primary monitor or not when the touchscreens which were not mapped to primary monitor. Check the check box to enable this function, then, the driver will generate the mouse event for the primary monitor even through the touchscreen was configured as other monitor mapping and multiple monitor function enabled.

3. Operation Mode

TouchSide driver support split display mode for those applications which do not map the touchscreen to the full screen of the monitor.

3-1) Full screen

The touchscreen will be mapped to the full screen of the specified monitor.

3-2) Right screen

The touchscreen will be mapped to the right half screen of the specified monitor.

3-3) Left screen

The touchscreen will be mapped to the left half screen of the specified monitor.

3-4) Upper screen

The touchscreen will be mapped to the upper half screen of the specified monitor.

3-5) Lower screen

The touchscreen will be mapped to the lower half screen of the specified monitor.

3-6) Other operation mode

3-6-1) Quarter 1

The touchscreen will be mapped to the first quarter area of the specified monitor display.

3-6-2) Quarter 2

The touchscreen will be mapped to the 2nd quarter area of the specified monitor display.

3-6-3) Quarter 3

The touchscreen will be mapped to the 3rd quarter area of the specified monitor display.

3-6-4) Quarter 4

The touchscreen will be mapped to the 4th quarter area of the specified monitor display.

3-6-5) Customized

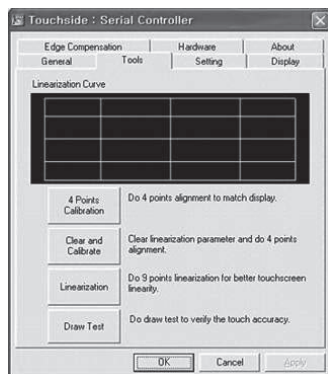
If the touchscreen needs to be mapped the area other than the above area, user can define the mapping area for application. With this mode, the driver does not correct the mapping area when the display resolution changed. It needs to do configuration setting again whenever the display resolution changed.



Driver Program Installation (For Windows OS)

Configuration Touchside Utility

■ Tool Property Page



- Calibration, draw test tools and the linearity curve of the touchscreen were list in this property page shown as below for user to do touchscreen calibration and touch position test.

- User can do calibration or draw test by pressing the function push buttons.

1. Linearization Curve

Linearization curve of the touchscreen is list in this page for reference and trouble shooting purpose.

2. 4 points calibration

It needs calibration before the touchscreen can work accurately. Whenever the user feel the accuracy lost, user can do calibration again to get a more accuracy touch function.

Pressing this button, a new window will be popped-up at the location when the touchscreen was mapped to area for this touch system to guide the user do 4 points calibration.

User should follows the guide to touch and hold the blinking X symbol in the calibration window until it does not blink to make sure that the utility can gather enough data for computation.

In addition, a time line bar is shown in the bottom of the window to indicate time elapsed. If the touchscreen was not touched before the time line bar going to right end, the calibration task will be terminated automatically.



3. 4 points calibration

It needs calibration before the touchscreen can work accurately. Whenever the user feel the accuracy lost, user can do calibration again to get a more accuracy touch function.

Pressing this button, a new window will be popped-up at the location when the touchscreen was mapped to area for this touch system to guide the user do 4 points calibration.

User should follows the guide to touch and hold the blinking X symbol in the calibration window until it does not blink to make sure that the utility can gather enough data for computation.

In addition, a time line bar is shown in the bottom of the window to indicate time elapsed. If the touchscreen was not touched before the time line bar going to right end, the calibration task will be terminated automatically.



Driver Program Installation (For Windows OS)

Configuration Touchside Utility

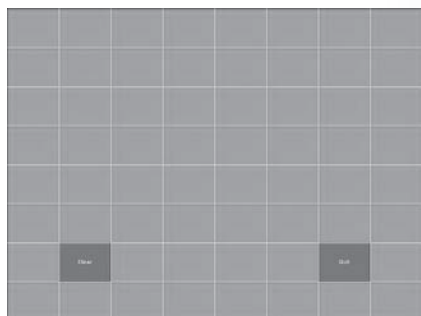


to make sure that the utility can gather enough data for computation. In addition, a time line bar is shown in the bottom of the window to indicate time elapsed. If the touchscreen was not touched before the time line bar going to right end, the calibration task will be terminated automatically.

4. Linearization

Linearization (25 or 9 points calibration) function is used to compensate the touchscreen linearity. After linearization completed, the linearity of the touchscreen will be shown in the Linearity curve window.

Pressing this button, a new window will be popped up at the location when the touchscreen was mapped to area for this touch system to guide the user do 25 points calibration. User should follows the guide to touch and hold the blinking X symbol in the calibration window until it does not blink

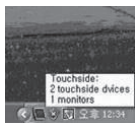


5. Draw Test

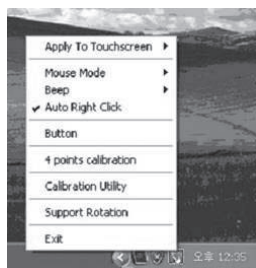
This function is used for accuracy and performance check. Press this button and a new pop up window will be popped up in the location where the touchscreen was mapped to the touch system as below,

- User can press the Clear button to clear the window. Press Quit button to terminate this draw test.

■ xTouchmon utility



- TouchSide software package contains an utility to monitor some events related to touchscreen application. After TouchSide software package installed, a tray icon utility was shown in the system task bar as below. Whenever the mouse cursor moves on the tray icon, a tool tip shows as



- This is a fast tool for user to change some driver setting without launching the TouchSide configuration utility. When user right click on this tray icon, a pop up context menu shows as below,
- This pop up menu shows the all of the functions this utility supports.



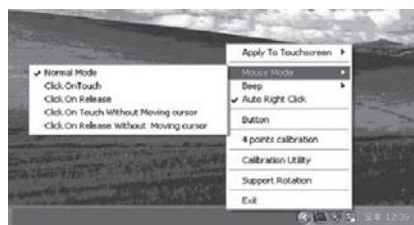
Driver Program Installation (For Windows OS)

Configuration Touchside Utility



1. Apply To Touchscreen

When user selects this function, the sub-menu shows all of the TouchSide devices installed in the system. User can choose the next function configuration settings will be applied to which devices. xTouchmon allows the configuration settings applied to all of the TouchSide devices or some specified devices.



2. Mouse Mode

This Mouse mode has sub-menu as below to show all of the mouse emulation modes the driver supports.

- This mouse emulation mode changed will be applied to the specified devices.

3. Beep

User can change the Beep Mode with this function menu. And, the change will be applied to the specified devices immediately.

4. Auto Right Click

User can enable/disable auto right click function with this function menu. The change will be applied immediately to those specified devices.

5. Button

This button is designed to show/hide the right button window.

6. 4 Points calibration

Select this function to pop up the 4 points calibration window for user to do calibration for those specified devices.

7. TouchSide Utility

TouchSide configuration utility will be launched if user selects this function.

8. Support Rotation

Monitor display rotation support. Enable it, this utility will correct the touchscreen orientation to match with monitor display orientation whenever it detects monitor rotation. This correction will be done automatically if the system video adapter driver supports Microsoft Win32 APIs for monitor rotation. If the video adapter driver does not support Microsoft Win32 API for monitor rotation, the utility will pop up a one point calibration window to correct the orientation mapping.

9. Exit

Exit function to terminate the xTouchmon daemon process. After this daemon process terminated, all of functions the utility supports will be disabled.

- In addition to above functions, xTouchmon also monitors monitor display setting change. It will correct the coordination mapping automatically except the touchscreen work with customized area mode whenever it detect monitor resolution change, numbers of system monitors change.



Driver Program Installation (For Mac OS)

USB Monitor

Double click on iMo Installer image to run iMo Installer.



- [Display Link Software Installer]
Select DisplayLink Software Installer to install USB driver program. Follow the instructions. The computer has to be re-booted in order to complete the installation process.
- [User Guide]
Please choose "user guide" to view the user guide.
- [Display Link Software Uninstaller]
Select DisplayLink Software Installer to uninstall USB driver program. The computer has to be re-booted in order to complete the un-installation process.

Note

- Please refer to the "user guide" to learn more about its use under Mac OS.
- This device supports Intel-based MAC OS X version only.

Touch



1. Select TouchKit Software Installer to install Touch driver program.

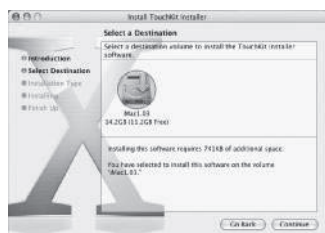


2. Touch driver program start installing.



Driver Program Installation (For Mac OS)

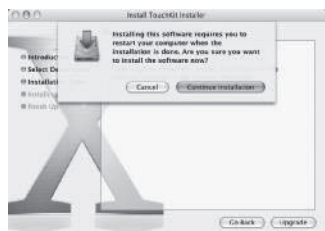
Touch



3. Press [Continue] button to continue.



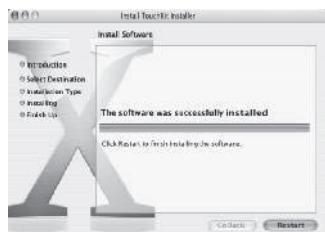
4. Select the destination folder that installs TouchKit.



5. After installing the software, the system will restart automatically. If users want to reboot, press [Continue Installation].



6. Installation is in progress.



7. Press [Restart] to reboot Mac OS x.



Driver Program Installation (For Mac OS)

Configuration Touchside Utility

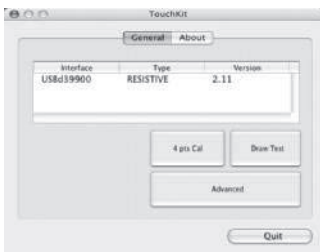
The touch-sensitive area of the panel and touch-sensitivity both can be modulated through the configuration utility. Besides, the controller identification and device activated shall be done first.



- After installing TouchKit, go to the sub-menu [Application] and double click [TouchKit Utility] to start the TouchKit diagnosis window.



- Please check touch panel devices (included its controller) are equipped well, then those components will be displayed the Panel List dialogue box. There is one or more devices found.



- The controller is displayed on the Panel List box. User can get the information of interface, type, version and model for each controller. Select one device after import more than one device at the panel list window. The one selected will activate the panel.
- There are two property pages in TouchKit utility, and they are General and About. Each property page contains different functions for users to do the adjustments. Therefore, users can easily manage all the TouchKit controllers through TouchKit Utility.

General

General property page contains the functions of [4 pts Cal], [Draw Test] and [Advanced].



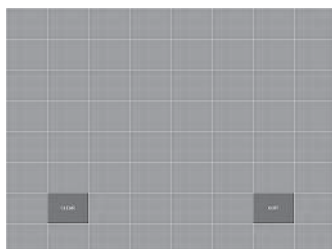
4 pts Cal

- Correct 4 point locations on screen with the panel. Press [4 pts Cal], screendisplays as follows.
- Touch the blinking symbol on panel until beep or stop blinking.



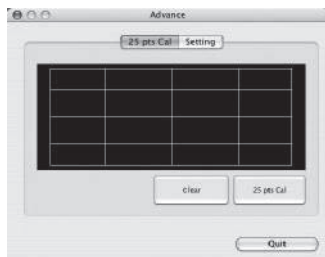
Driver Program Installation (For Mac OS)

Configuration Touchside Utility



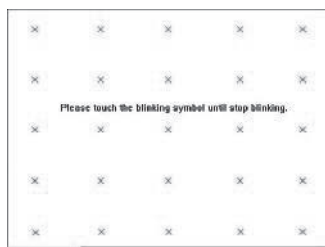
Draw Test

- Test the drawing position related to the display screen on panel.
Click on the [Draw Test] button. There will be a squared blue display showing.
- Try to write or draw on it to verify the touch position.
- Press [CLEAR] for cleaning touch screen, and press [QUIT] to exit Draw Test.



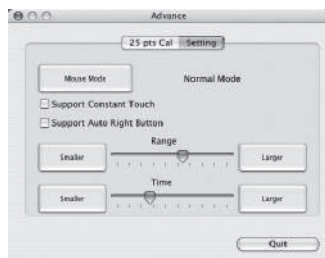
Advanced

- Advanced property page contains two pages of 25 Pts Cal and Setting.
- Press [Clear] to clear the previous calibration records.
Press [Yes] to clear previous records. The record will become default record.



- Then, press [25 pts Cal] to execute 25 points calibration.
Correct 25 point locations on screen with the panel.
- Touch the blinking symbol on panel until beep or stop blinking.
After the calibration, the new record will overwrite the old one.

■ Setting



Mouse mode:

There are three kinds of mouse mode users could choose,

Normal Mode

It provides all the mouse functions, including the dragging function.

Click on Touch

Click action is executed as soon as users touch the panel.

Click on Release

Click action will not be executed until finger leaves the panel.



Driver Program Installation (For Mac OS)

Configuration Touchside Utility

Support Constant Touch:

Enable Constant Touch to force driver to stop reporting touch point when the movement is within the range which users can adjust. Therefore, the user can see a stabilized cursor instead of a chattering cursor when userstouch the same point with unwanted noise.

Support Auto Right Button:

Enable Auto Right Button to force driver to report a right click mouse event to OS when users do a continuing touch till time out. It no longer needs to touch the right button in the Touchtray to activate a right click. This feature makes users to do right click more easily with touchscreen.

■ About



- Information about TouchKit.

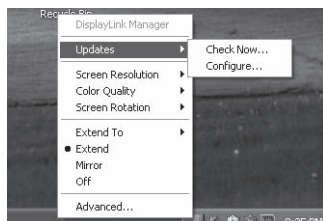
QUIT

- Exit TouchKit touch panel configuration utility.



Using Touch USB sub monitors

Click [AT-7] icon to view the menu screen .

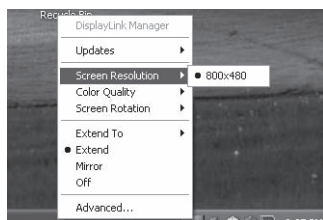


■ Refresh menu

View the driver's refreshed information or perform environment settings.

[Check] : Check the driver's refreshed information.

[Environment setting] : Perform driver's environment setting.

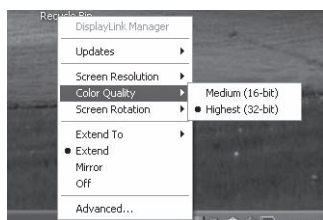


■ Screen resolution menu

Screen resolution is set as 800x480.

Higher resolutions will result in clear and detailed screen.

This product is set in 800x480 settings.



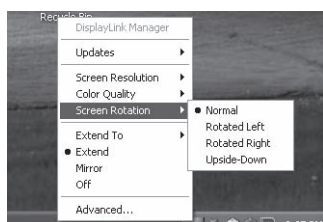
■ Color quality menu

May be set based on user resolutions

When they are set as very high (32 bits), it displays a better screen but the PC speed may be compromised.

[Medium (16 bit)] : Approximately 65,000 colors are being depicted.

[Very high(32 bit)] : Approximately 4,294,000,000 colors are being depicted.



■ Screen rotation menu

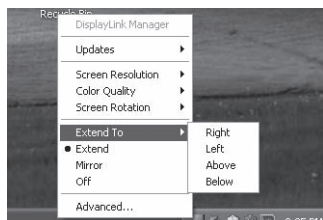
It is used when the device is being rotated.

[Normal] : It is a setting used for normal use of the device.

[Rotate to the left]: It is a setting used when the device is rotated 90° to the left. The screen on the device will rotate 90° to the right.

[Rotate to the right]: It is a setting used when the device is rotated 90° to the right. The screen on the device will rotate 90° to the left.

[Rotate to the left]: It is a setting used when the device is rotated 180° to the left.



■ Expansion direction menu

Send the screen sent out to the USB monitor in different directions.

[Right] : Drag the screen to the right of the device and from the PC.

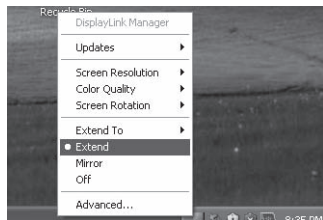
[Left] : Drag the screen to the left of the device and from the PC.

[Upward] : Drag the screen upward to the device and from the PC.

[Downward] : Drag the screen downward to the device and from the PC.



Using Touch USB sub-monitors

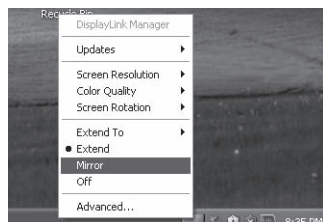


■ Expansion menu

PC screen may be dragged into the device's screen.
Simply drag the desired screen into the device's monitor.

Note

Mirror function will allow the user to view the same screen as the PC screen.

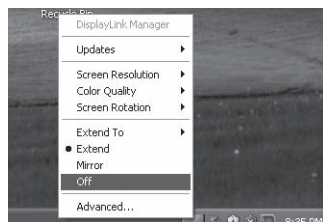


■ Mirror menu

Mirror function will allow the user to view the same screen as the PC screen.

Note

When mirror menu is selected, PC's screen will be set as the same setting as the USB sub monitor screen. Therefore, when the PC's screen is larger than 800x480 resolutions, it will be automatically reduced to match the USB monitor setting and display the same screen.

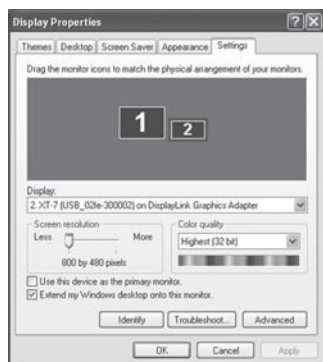


■ Turn off menu

Turn off the USB monitor function.

When the USB monitor is turned off, [Expansion Direction], [Expansion], [Mirror] and [Advanced] functions are the only functions that are activated. [Screen resolution], [Color quality] and [Rotation] functions are deactivated.

In order to release the monitor from [Off] status, select [Expansion Direction], [Expansion] or [Mirror] functions.



■ Advanced menu

Select the setting from the USB sub monitor's display environment settings.

Note

Detailed USB monitor settings are possible in the display setting window. Even though it may differ from different PCs, user PC monitor is set as number 1 monitor and USB monitor (XT-7) is set as either number 2 or 3 monitor in normal uses.



Troubleshooting

Problem	Solution
iMo does not power up after USB cable is connected	<p>Did you run your installation program after connecting the device? Please use the Installation Software in the CD. Please refer to the USB driver program installation for detailed information.</p>
I cannot see the screen clearly	<p>Make sure that the USB cables are properly connected. Make sure that the 'Installation Software' is properly installed.</p> <ol style="list-style-type: none">1. Right click on "My Computer" and open the "properties" window.2. Click "device manager" in the Hardware tab.3. Click PC located at the top part of the tree in the device management window.4. Click "search hardware modifications" in "Action (A)" menu.5. Reboot the PC. <p>※ This device is recognized as a normal USB device. Since frequent rebooting of the PC may damage the USB device, please refer to Microsoft's USB device troubleshooting section for further supports.</p>
The screen is frozen	<p>Check "hardware acceleration" from the properties menu. Set the hardware acceleration value to "maximum".</p> <ol style="list-style-type: none">1. Open display registration information by right clicking the screen.2. After selecting "setting" tab, select nanovision minimonitor.3. Click "Advanced"4. When the screen does not pop up, click 'troubleshooting' tab. Set hardware acceleration as "maximum".
The system would not reboot after the connection	<p>In one-board type computers using i815 chipset mother boards, disable the Legacy USB support in the BIOS setting menu and reboot the PC again. Since entering BIOS may require different steps for different PCs, please refer to your manuals carefully. Follow instructions from Microsoft help.</p>
Dos screen that appears during PC booting does not appear on the screen	<p>Since this device is a USB device, Dos screen will not appear during the booting process.</p>



Troubleshooting

Problem	Solution
You cannot perform 3D games on this screen	<p>This is a USB monitor device that receives USB 2.0 High Speed(480Mbps) signals. Therefore, it is unable to support various programs that require 3D acceleration functions.</p> <p>※ Device uses may be limited based on PC's properties (CPU or memory)</p> <ul style="list-style-type: none"> - Limited programs <ol style="list-style-type: none"> (1) Real Player (Do not support expansion mode) (2) Most of 3D games (3) Programs running based on Direct X - Supported movie programs <ol style="list-style-type: none"> (1) Windows Media Player (Supports versions higher than 10) (2) Power DVD (5) Win DVD (Version 5 onwards)
I would like to know which OS are being support	<ol style="list-style-type: none"> 1. Windows Vista 32bit is supported. <ul style="list-style-type: none"> - Windows Vista 64bit is not currently supported. 2. Windows XP Service Pack 2 is supported. <ul style="list-style-type: none"> - Service Packs under version 1 is not supported. - It is optimized for Windows XP Service Pack 2 and USB 2.0 settings. 3. Windows 2000 Service Pack 4 is supported. <ul style="list-style-type: none"> - Service Packs under version 3 is not supported. - It is optimized for Windows 2000 Service Pack 4 and USB 2.0 settings. <p>Monitors do not function properly with USB 1.0 ports.</p>
How many devices may be connected to a single PC?	<p>Theoretically, Up to 127 devices may be connected to the PC. However, the following numbers are our recommendations.</p> <ol style="list-style-type: none"> 1. When connecting 1-2 units <p>Minimum PC requirement: 1.2GHz CPU / 512 MB Memory</p> 2. When connecting 3 units <p>Minimum PC requirement: 1.8GHz CPU / 1GB Memory</p> 3. When connecting 6 units <p>Minimum PC requirement : 1.6GHz Dual core CPU / 1GB Memory</p> <p>※ Adequate amount of frame speed may not be supported depending on the use of PC's resources.</p>
How can I completely remove the installation program?	<p>When you click "add/remove program" from the control panel, a list of installed programs will appear.</p> <p>Click on [DisplayLink Graphics] and click "remove" button.</p>



Troubleshooting

Problem	Solution
Even when the connection is disconnected and the power is turned off, device information is still remaining in the display registration information	When the USB monitor is turned off or disconnected, it will be deactivated from the system. In order to erase this information, you must remove [DisplayLink Graphics] program from the control panel. However, when the program is removed, it must be reinstalled before using the device again.
I would like to clean the device	<p>Since this device is a LCD monitor, it is attached with a thin anti-reflection film. Since it is very susceptible to scratching and chemicals, please refer to the following instructions carefully during the cleaning process.</p> <ol style="list-style-type: none">① Use soft cloth (such as the cloth used to clean eyeglasses) Normal cloth may leave scratches on the screen.② When cleaning agents are used, please use exclusive cleaning agent for cleaning LCD screens.<ul style="list-style-type: none">- If other alkali or soap cleaning agents are used it may damage and discolor the LCD screen.- Do not spray cleaning agents directly onto the screen. LCD screen may be discolored and damaged when cleaning agents are directly sprayed onto the screen. Please spray the agent on the cloth before cleaning the screen.③ Do not put pressure onto the screen to clean the LCD screen thoroughly. Clean the screen 2-3 times with a soft touch.
Where can I download the drivers and software that I purchased?	You may download it from our homepage (www.s-dion.com). Refer to the user manual for the homepage address and download the drivers.
On connection of a USB device to the PC, the message "USB Device Not Recognized" appears in the Windows system tray	<ul style="list-style-type: none">- Check other USB devices are recognised by the PC. Ensure that you are using a good quality USB cable and test again by using a different USB port on the PC, for example a port at the back of a desktop PC.- If using a docking station, remove all other devices that may be connected to the dock and try again.- If the problem persists, then you should contact the original manufacturer of the product.
The device is not working under my Mac OS.	IMO monitor is compatible with Intel-based Mac OS X version only. Please check the main chipset and OS version.
The device stops working after updating the OS to version 10.5.7	<ul style="list-style-type: none">- A beta driver is now available that addresses this issue. Please visit http://www.s-dion.com to download the beta release (1.1.3b1).- If you still continue to encounter problems after installing this driver, please ask a Question in our Support Portal.



Specifications

Display	Size / Resolution	TFT7" / 800X480
	Brightness	250cd/m ²
	Contrast	500: 1
USB		USB 2.0 High speed
Power supply		USB Power supply
Function	Touch Sub Monitor by USB connection only	
	Brightness Control	
	Extend to 4 directions (Up/Down/Right/Left)	
	Screen rotation (Clockwise)	
	Mirror function	
Interface		USB mini to 5-pin B-type Input key 2 tact switch : Brightness Up, Down
PC Requirement	Intel Pentium/Celeron 1.2GHz above	
	RAM 1GB above	
	USB 1 port above	
	HDD 500MB capacity	
	Windows 2000 (SP4), Windows XP (SP2, SP3), Windows VISTA (32bit, 64bit) Mac OS X equipped with Intel CPU	
Dimensions(mm)		194x133x23.5mm (WxHxD)



FCC Information

THIS DEVICE COMPLIES WITH PART 15 OF THE FCC RULES. OPERATION IS SUBJECT TO THE CONDITIONS:

- (1) THIS DEVICE MAY NOT CAUSE HARMFUL INTERFERENCE, AND
- (2) THIS DEVICE MUST ACCEPT ANY INTERFERENCE RECEIVED, INCLUDING INTERFERENCE THAT MAY CAUSE UNDESIRE OPERATION.

Caution

Changes or modifications not expressly approved by the party responsible for compliance could void the user's authority to operate the equipment.

Note

This equipment has been tested and found to comply with the limits for a Class B digital device, pursuant to Part 15 of the FCC Rules. These limits are designed to provide reasonable protection against harmful interference in a residential installation. This equipment generates, uses and can radiate radio frequency energy and, if not installed and used in accordance with the instructions, may cause harmful interference to radio communications. However, there is no guarantee that interference will not occur in a particular installation. If this equipment does cause harmful interference to radio or television reception, which can be determined by turning the equipment off and on, the user is encouraged to correct the interference by one or more of the following measures:

- Reorient or relocate the receiving antenna.
- Increase the separation between the equipment and receiver.
- Connect the equipment into an outlet on a circuit different from that to which the receiver is connected.
- Consult the dealer or an experienced radio/TV technician for help.

