



Mimo 10.1" Vue with TanvasTouch®

UM-1080JH / UM-1080JH-OF



10 Point Multi-Touch Capacitive Display with Localized, Instant Haptic Feedback.

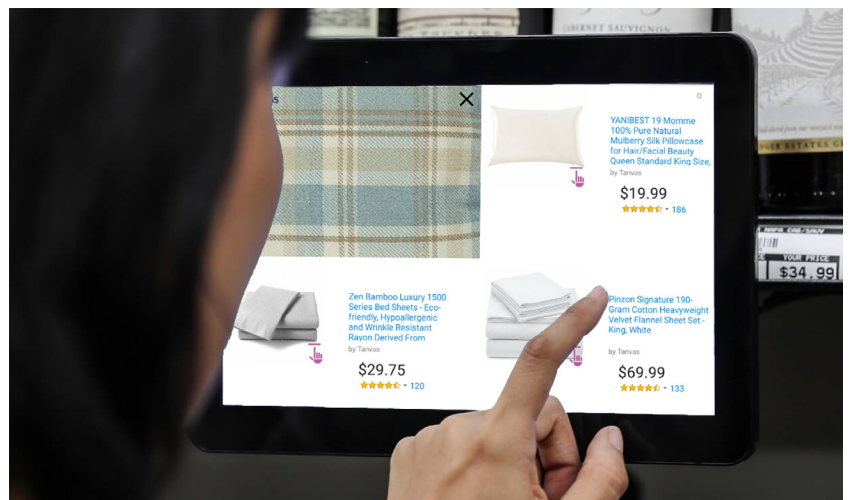
10.1" Wide Viewing Angle HDMI Display with TanvasTouch®

Mimo Monitors and Tanvas are the first to bring surface haptic technology to digital signage and conference room displays. The quality and durability of the Mimo Vue display coupled with the groundbreaking technology of TanvasTouch which allows you to feel what you see on the screen, make this combined product truly unique. Unlike vibration, TanvasTouch has no moving parts and the effects are localized to your fingertip. The software-defined surface is fully programmable for endless creativity and cutting-edge innovation. Developers can create multidimensional effects such as edges, clicks, bumps or collisions and textures like rough, ripples, rubbery or bumpy. Applying haptics to images is a simple process only limited by the imagination.

Designed for the best interactive experience, the Mimo Vue HD with TanvasTouch (UM-1080JH) is the next generation of Mimo Monitors 10.1" monitor line. It features a modern zero bezel design, nearly 180 degree viewing angle from its bright, high contrast, IPS screen, and a resolution of 1280x800. The Mimo Vue HD with TanvasTouch includes a 10-point projected capacitive touch panel for developing an intuitive human interface. With cable management built into the 1.3kg/3lb base, the Mimo Vue HD allows for a clean tabletop installation. It also readily supports VESA 75 mounting as well as easy installation in almost any environment. This system is primarily engineered for commercial and corporate user operations, offering a powerhouse system in a sleek profile that minimizes clutter and enhances the user experience.

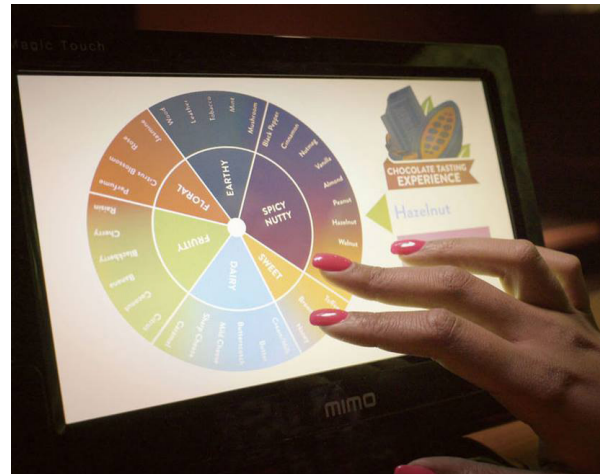
Applications:

- Kiosks
- Controls
- Special Event Brand Activations
- In-Store Retail Activations
- Trade Shows and Conferences
- Out-of-Home Advertising
- Accessibility



Monitor Specifications

DISPLAY SECTION (Typical)	Video	HDMI	
	Touch	USB (HID Compliant)	
	Contrast	800:1	
	Luminance	350	cd/m2
	Viewing Angle	85/85/85/85	U/D/L/R
VUE HD	Plug and Play	Yes	
	UP / Down Scaling	Yes	
	Firmware Upgradeable	Yes	
	Operating Temperature	-10 to 50	C
	Storage Temp	-30 to 60	C
	Power Consumption	10	W (max)
	Measurements & Weight	8.375" x 10.25" x 5.5"	4.12lbs
TANVASTOUCH SURFACE HAPTICS	Haptic Output	Fingertip-localized variable friction	
	Surface Haptic Effects	Software-defined	
	Compatible Drivers	TanvasTouch Engine	
	Spatial Resolution	Pixel resolution - 1280 x 800	
	Amplitude Resolution	8-bit	
	Operating Systems	Windows (Linux & Android coming soon)	



Mimo Monitors
 743 Alexander Rd. Suite 15
 Princeton, NJ 08540

info@mimomonitors.com
 Sales: **1-855-YES-MIMO (937-6466)**

2019-0606
 Rev 2 - 78495