



Mimo Vue 10.” HD Display HMDI Capture Set Up Guide

Model Number: UM-1080CP-B



Please keep this Set-Up Guide for future reference.

Table of Contents

Introduction	3
Compatibility requirements:.....	3
DisplayLink Driver Information	3
DisplayLink Driver Installation	4
Unboxing and Assembly Instructions	4
Wiring and Connections	7
Windows - Calibration for Touch Displays.....	7
<i>Windows 7</i>	7
<i>Windows 10</i>	7
Important Notes	8
1. <i>Windows updates</i>	8
2. <i>HDMI Capture</i>	8
3. <i>Extending USB Cable</i>	8

Introduction

Designed to be a perfect conference room control interface, the Mimo Vue HD with HDMI capture UM-1080CP-B is the second generation of Mimo Monitors 10.1" monitor line. It features a modern zero bezel design, nearly 180-degree viewing angle from its bright, high contrast, IPS screen, and a resolution of 1280x800. The Mimo Vue HD includes a 10-point projected capacitive touch panel for developing an intuitive human interface.

This capture device allows your USB 3.0 connected computer to stream high-quality HDMI® video, up to 1080p video at 60 frames per second. The capture device converts video and audio from your HDMI source device into standard UVC (USB Video Class) and UAC (USB Audio Class). The HDMI capture interface is integrated into the display and shares the USB connection to the host computer. This video data stream can be presented to other displays with video processing, sent over the internet to other online meeting participants, or many other options.

Compatibility requirements:

- **Android** - Requires DisplayLink Presenter application installed on Android device and a connection to a DisplayLink Universal Hub. Please review the information provided at [DisplayLink for Android](#).
- **Mac** - Requires DisplayLink driver. Please review the information provided at this page: [DisplayLink for MacOS](#).
- **Windows** - Requires DisplayLink driver. Please review the information provided at [DisplayLink for Windows](#).
- **Ubuntu** - Requires Intel-based x86 32 or 64-bit system running Ubuntu version 14 or later. Please review the information provided at [DisplayLink - Ubuntu Driver Download](#).
- **Chromebox** - No additional requirements. Please contact us if you experience issues during set up. Please review the information provided at [DisplayLink - Native Chrome OS Support](#).

DisplayLink Driver Information

If noted above, DisplayLink driver **must** be installed on the computer. If you have Windows 10 or newer, the DisplayLink driver should be pre-installed on the computer. If Windows does not locate the driver locally, and if the computer is connected to the internet, Windows should automatically search online, download, and install the appropriate drivers. If necessary, please follow the instructions below to manually install the DisplayLink drivers.

Please visit [DisplayLink Support](#) for important information such as: how to identify whether your operating is supported; how to identify operating system version, build, and system type; known issues and troubleshooting steps.

DisplayLink Driver Installation

Go to www.displaylink.com . At the top left of the screen, you will find a button labeled DOWNLOAD DRIVERS, click on that button to download the necessary driver(s). The website will then prompt you to select the correct Supported Operating System. The website will then prompt you to select the correct version of the operating system you are running on the computer being set up.

Note that while DisplayLink offers BETA versions for download, we recommend downloading the latest non-BETA released version.

Unboxing and Assembly Instructions

Unbox the various components and ensure that nothing is missing. The following items should be included. See Figure 3 for component pictures and plankton assembly instructions.

1. Mimo Vue HD Display (screen)
2. Stand
3. Hinge Cover
4. Cable Cover
5. HDMI Cable, green connectors
6. USB 3.0 Cable, blue connectors, dual to single
7. Power Cable, red connectors
8. Stand
9. Hinge Cover
10. Cable Cover
11. DC Power adapter with USB power output port
12. Stand screws
13. Cable cover screws

Figure 1: Components and Plankton Assembly Instructions

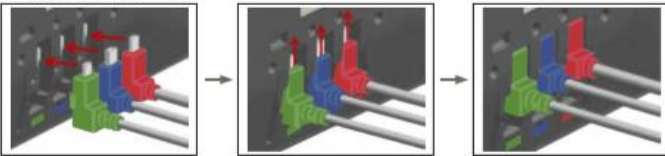
MIMO PLANKTON Assembly Instructions

1. Components

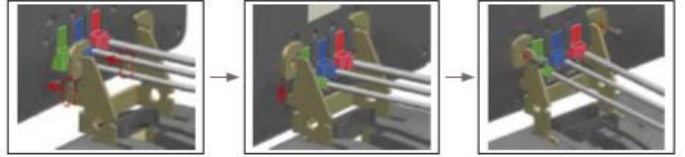


2. Assembly Instructions

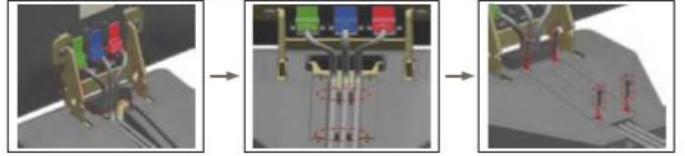
1) Cable Assembly



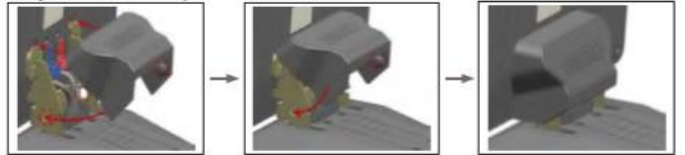
2) Stand Assembly



3) Cable Arrangement & Cable cover Assembly



4) Hinge cover Assembly



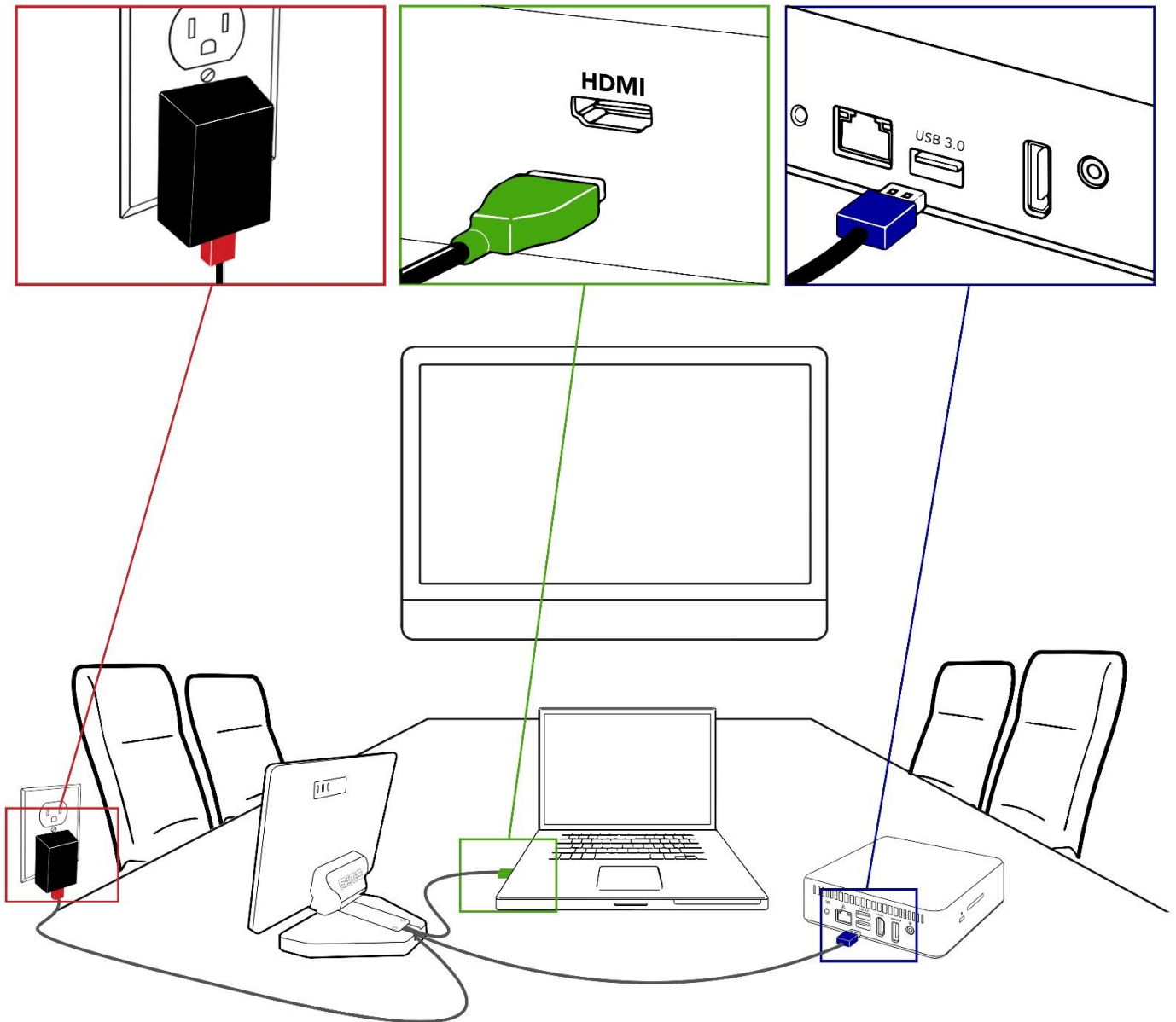
3. Cable Detachment



4. Cable Cap Detachment



Figure 3: Wiring Diagram



Wiring and Connections

As shown in Figure 4, all connectors are color-coded as are the connections on the back of the Mimo Vue. Simply match the connector style and color and insert. The **red** connector is for power and should be connected to the *power adapter USB port* and the display. The **blue** connector should be connected to the PC/NUC and the Mimo Vue. This cable is 3.0M long but can be extended using active cabling. See the Important Notes section on page 8 for details. The **green** connector is for HDMI capture, requires USB 3.0 capability, and should be connected to the Mimo Vue and any device that is trying to share its display.

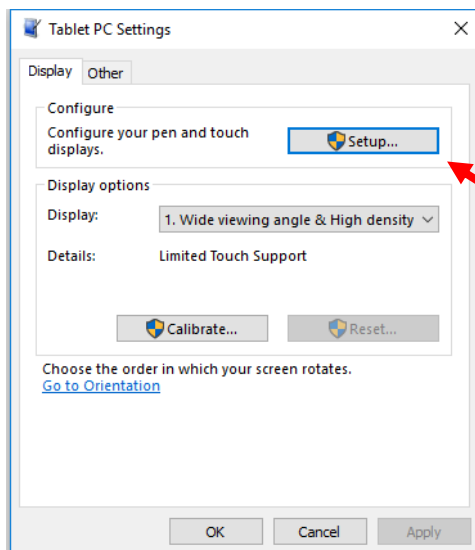
Windows - Calibration for Touch Displays

Windows 7: If you are running Windows 7 the following steps for calibration still apply, however, you will need to install additional Mimo drivers. Please either call Mimo Monitors at 855-937-6466 or you may send an email request to info@mimomonitors.com.

Windows 10:

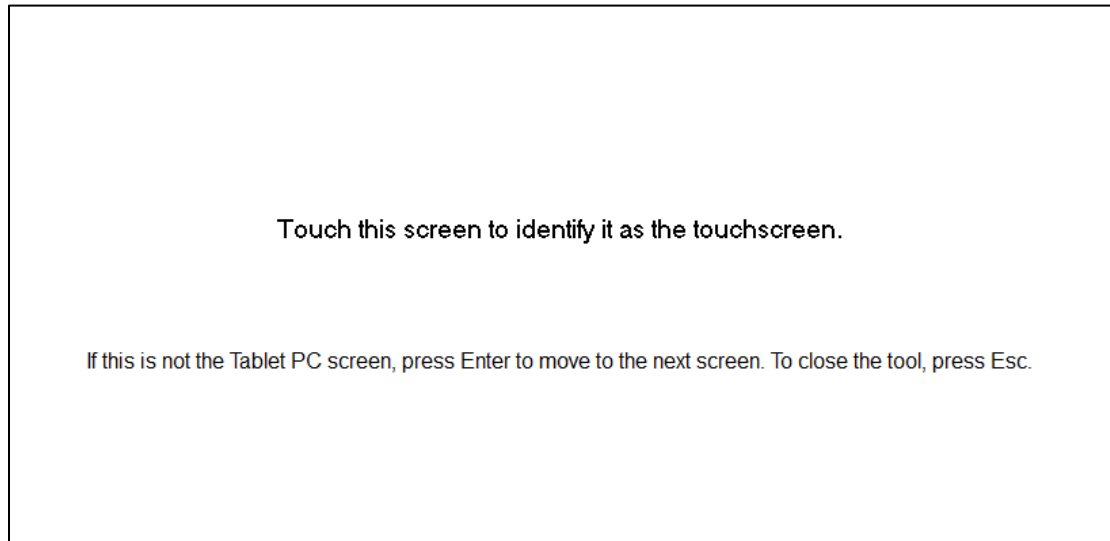
Once all the components are properly connected and powered on, it is necessary to let the operating system know which of the displays in your configuration has touch capability. For example, if you're using Windows 10, tap the Windows Start button and select Settings. In the "Find a setting" box, at the top center of the screen, type "calibrate the screen for pen or touch input" and tap the Enter key. The Tablet PC Settings dialog window will pop up. Tap the Setup button as shown in Figure 2 below.

Figure 1: Touch Screen Settings



Once Setup is selected, all the connected screens will go white and one of the screens will display “Touch this screen to identify it as the touchscreen” and “If this is not the Tablet PC screen, press Enter to move to the next screen. To close the tool press Esc.” to move to the next display. So, if the screen with the above message is displayed, either tap the screen or tap the Enter key until the correct display is selected. Once selected click on Calibrate to be guided through the calibration process and complete the setup.

Figure 2: Touch Screen Selection



At this point, your system should be working and setup is complete.

Important Notes

1. **Windows updates:** Before updating Windows, uninstall any DisplayLink drivers that might already be installed. The latest DisplayLink drivers will be loaded by Windows. If you experience problems after updating Windows, you may need to manually install the drivers. Please refer to page 3 (above) for instructions and a link to DisplayLink drivers and resources.
2. **HDMI Capture:** There must be an active HDMI signal for this feature to work. Please make sure that the HDMI cable is connected to the PC.
3. **Extending USB Cable (Blue):** If necessary, the USB cable can be extended using active cabling. Please read this related article on our website: [USB extension and the UM-1080CP-B](#).

END