



Mimo Vue 10" HD Display Set Up Guide

Model Number: UM-1080C-G



Please keep this Set-Up Guide for future reference.

Table of Contents

Introduction	3
Display Compatibility Requirements.....	3
Touch Compatibility Requirements.....	3
DisplayLink Driver Installation.....	3
What's In The Box.....	4
Windows - Configuration & Calibration for Touch Displays	4
<i>Windows 10.....</i>	<i>4</i>
Important Notes	6
<i>Windows Updates</i>	<i>6</i>
<i>Troubleshooting - Most Common Questions</i>	<i>6</i>

Introduction

The Mimo Vue HD UM-1080C-G is the second generation of Mimo Monitors 10.1” monitor line. It features a modern zero bezel design, nearly 180-degree viewing angle from its bright, high contrast, IPS screen, and a resolution of 1280x800. The Mimo Vue HD includes a 10-point projected capacitive touch panel for developing an intuitive human interface.

Display Compatibility Requirements

- **Windows** - Requires DisplayLink driver. Please review the information provided at [DisplayLink for Windows](#).

Touch Compatibility Requirements

- **Windows** - The Mimo display is HID compliant and Windows will automatically recognize the touch display.

If noted above, DisplayLink driver **must** be installed on the computer. If you have Windows 10 or newer, the DisplayLink driver should be pre-installed on the computer. If Windows does not locate the driver locally, and if the computer is connected to the internet, Windows should automatically search online, download, and install the appropriate drivers. If necessary, please follow the instructions below to manually install the DisplayLink drivers.

Please visit [DisplayLink Support](#) for important information such as: how to identify whether your operating is supported; how to identify operating system version, build, and system type; known issues and troubleshooting steps.

DisplayLink Driver Installation

Go to www.displaylink.com . At the top left of the screen, you will find a button labeled DOWNLOAD DRIVERS, click on that button to download the necessary driver(s). The website will then prompt you to select the correct Supported Operating System. The website will then prompt you to select the correct version of the operating system you are running on the computer being set up.

Note that while DisplayLink offers BETA versions for download, we recommend downloading the latest non-BETA released version.

What's In The Box

Unbox the various components and ensure that nothing is missing. The following items should be included.

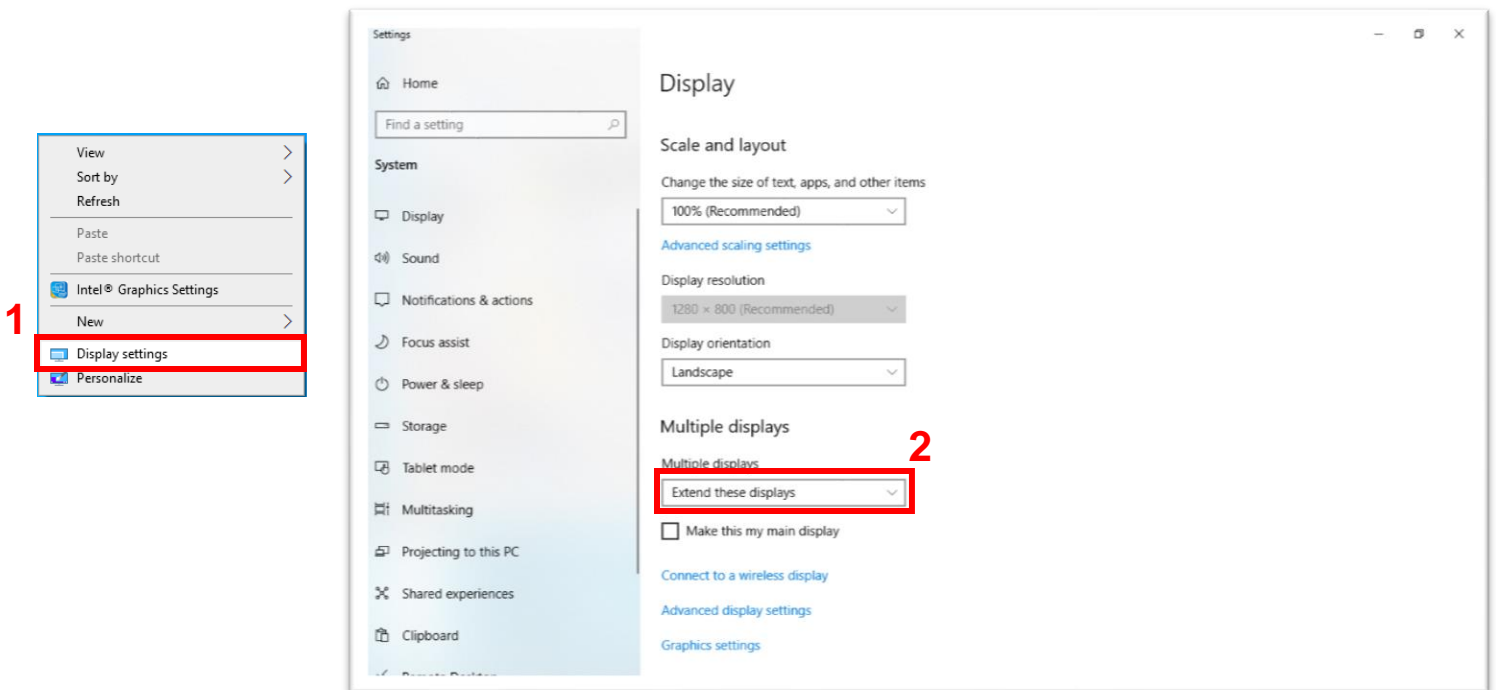
1. Mimo Vue HD Display (screen)
2. Stand
3. Hinge Cover
4. Cable Cover
5. USB Cable
6. Stand screws
7. Cable cover screws

Windows - Configuration & Calibration for Touch Displays

Windows 10:

Once all the components are properly connected and powered on, it is necessary to let the operating system know which of the displays in your configuration has touch capability.

- Make sure that your Mimo VUE HD Display in “extended mode”
 - Right click on your desktop
 - Click on “Display settings”
 - “Find the “Multiple displays” in Display tab; choose “Extend these displays”.



- Tap the Windows Start button, type Control Panel and press Enter
 - You may want to change the view to Large/Small icons
- Select Tablet PC Settings

Figure 1: View and Tablet PC Settings

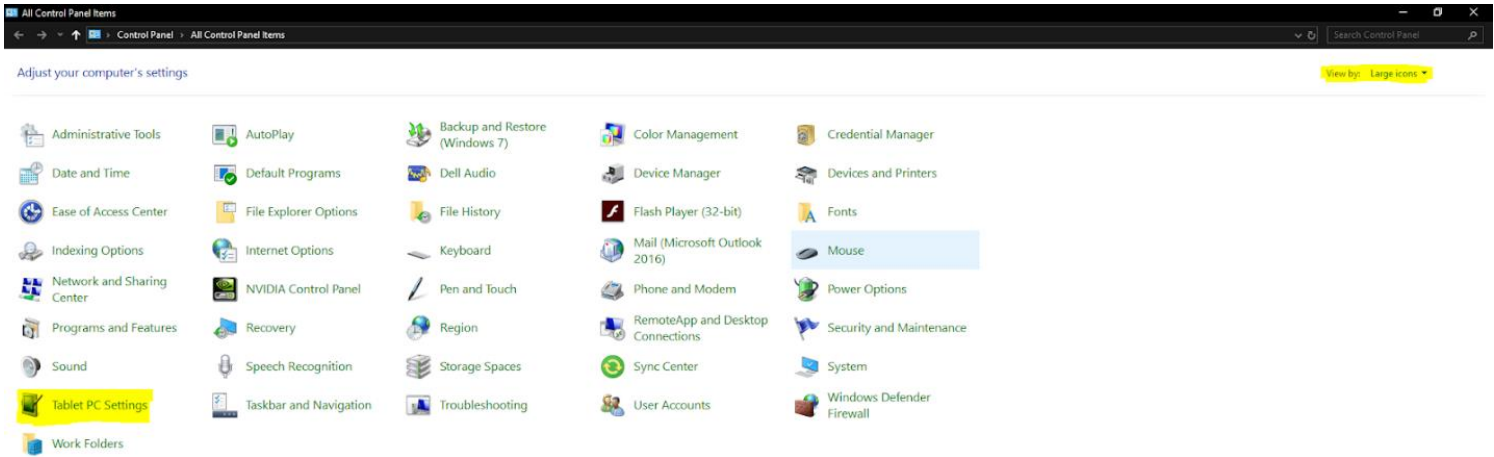
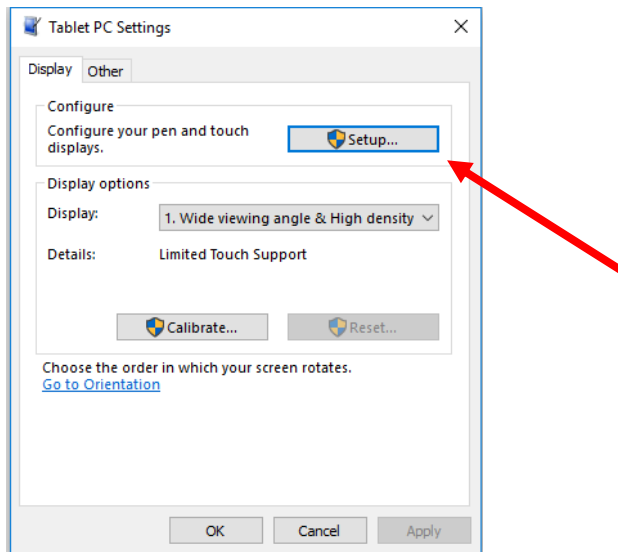
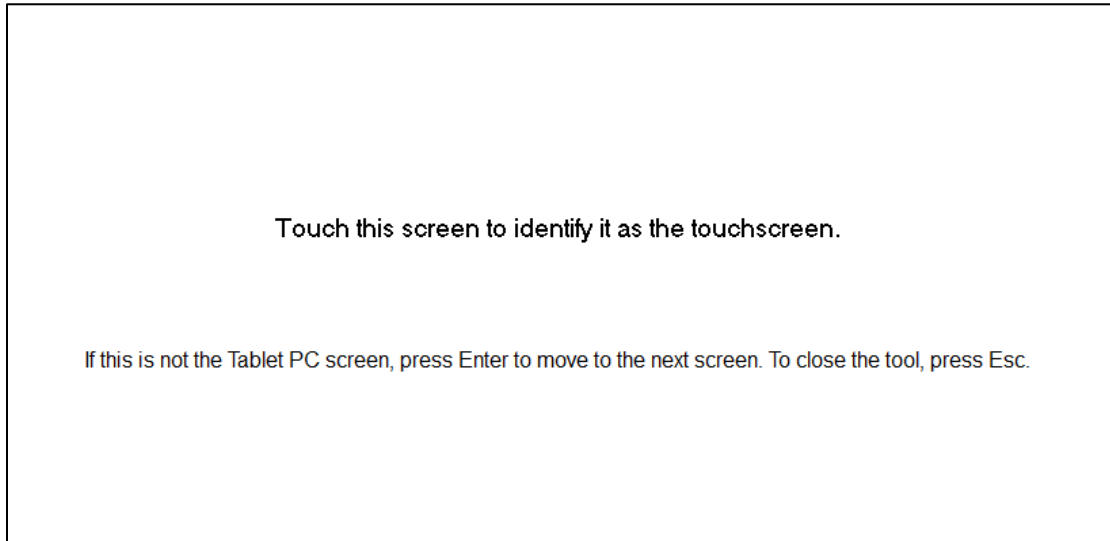


Figure 2: Configuration and Calibration



Once Setup is selected, all the connected screens will go white and one of the screens will display “Touch this screen to identify it as the touchscreen” and “If this is not the Tablet PC screen, press Enter to move to the next screen. To close the tool press Esc.” to move to the next display. So, if the screen with the above message is displayed, either tap the screen or tap the Enter key until the correct display is selected. Once selected click on Calibrate to be guided through the calibration process and complete the setup.

Figure 2: Touch Screen Selection



At this point, your system should be working and setup is complete.

Important Notes

Windows Updates

Before updating Windows, uninstall any DisplayLink drivers that might already be installed. The latest DisplayLink drivers will be loaded by Windows. If you experience problems after updating Windows, you may need to manually install the drivers. Please refer to page 3 (above) for instructions and a link to DisplayLink drivers and resources.

Troubleshooting - Most Common Questions

1. Why is my screen black?
 - a. DisplayLink driver is not installed - See instructions on page 3 above
2. Why is the cursor moving on the wrong screen?
 - a. The touch has not been configured through the "Tablet PC Settings" - See instructions starting on page 4 above
3. How do I calibrate my touch display?
 - a. Repeat the configuration process described on pages 4-5 above. Select the Calibrate option and follow the instructions.
4. How do I adjust the brightness?
 - a. Use the Brightness +/- buttons on the back of the display to adjust the brightness.