

iMo User's manual

REV. 1.3



USB MONITOR

www.mimomonitors.com

Contents

Before the use

Before the use	2
Product Configuration	4
Monitor Assembly	5
Model name & function	6

Use of product

How to Connect & Use	7
Driver Installation	8
USB Monitor Restrictions	13

User's Guide

Symptoms for possible problems and responses	14
Specification	17

Before the use

Before the use

Caution for safety



- ✘ Warning : It displays the cases where a mistaken handling may cause an infliction of death or serious injury to a person.
- ✘ Caution : It displays the cases where a mistaken handling may cause an infliction of physical injury to a person or property damage to a person.
- ✘ For environment, do not dispose this product to the waste can and make sure to collect in separate disposal.

Safety Precautions

The contents of this manual are intended to protect the user from danger and prevent physical accidents. Please read the entire Safety Section prior to use. Intentional or unintentional changes to the Product or use of the product for a purpose it was not intended is cautioned against. The user that changes or makes modifications to the product not expressly approved by the party responsible for compliance could void the user's authority to operate the equipment and warranty.

FCC compliance Information

Note: This device complies with part 15 of the FCC Rules. Operation is subject to the following two conditions:

- (1) This device may not cause harmful interference
- (2) The device must accept any interference received, including interference that may cause undesired operation.

Information to user

Note: This equipment has been tested and found to comply with the limits for a Class B digital device, pursuant to part 15 of the FCC Rules. These limits are designed to provide reasonable protection against harmful interference in a residential installation. This equipment generates, use and can radiate radio frequency energy and, if not installed and used in accordance with the instructions, may cause harmful interference to radio communications. However, there is on guarantee that interference will not occur in a particular installation.

If this equipment dose cause harmful interference to radio or television reception, which can be determined by turning the equipment off and on, the user is encouraged to try to correct the interference by one or more of the following measures :

- Reorient or relocate the receiving antenna.
- Increase the separation between the equipment and receiver.
- Connect the equipment into an outlet on a circuit different from that to which the receiver is connected.
- Consult the dealer or an experienced radio/TV technician for help.

Caution

This Class B digital apparatus meets all requirements of the Canadian Interference Causing Equipment Regulations.

Cet appareil numerique de la Classe B respecte toutes les exigences du reglement sur le materiel brouilleur du Canada.

Before the use

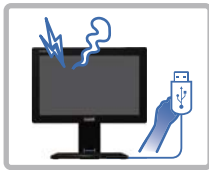
(Reference : This image may differ depending on each case for reference only.)

Make sure to read the contents before use.



Do not disassemble without authorization and inquire A/S Center for any problem.

- When contacting to the inside, it may cause fire or electric shock.



When there is any strange sound or smoke and odor, pull it off from the cable immediately.

- It may cause fire or electric shock.
- Make sure to use the power with the USB Cable (DC 5V)
(There is no need for separate power.)



Use the product in a place where there is no inflammation or furnace, or humidity.

- It may cause fire or electric shock.



Do not use the product in close distance from the product with inflammatory substance or combustible spray and others.

- It has the risk of fire.



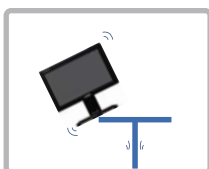
Do not put chopstick, driver or other foreign substance to the inputting area of the product.

- It may cause fire or electric shock.



When the product is cleaned, wipe off with soft fabric, not water mop.

- It may cause fire or electric shock by having the moisture to enter into the gap of the external part.
- LCD may be damaged if it is scratched or pounded with a sharp object.



Do not install the product in a shaking place or out of reach of children.

- When dropping the product, it may damage to product or a child may cause the product to fall.

Before the use

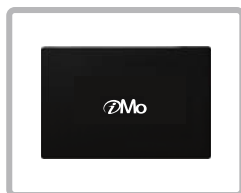
Product Configuration

After removing the package of the product, make sure to check if the following components are all present. If there is any missing component, make your inquiry at the place of purchase.

■ Basic components



USB Monitor



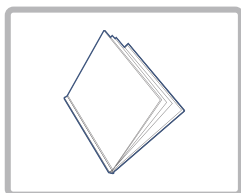
Protective cover



Easel Stand
(It is assembled on
the back cover of the main body.)



USB cable



Guide for monitor installation



User manual and driver

■ additional components



Camera
(model DS-90UC)



Fixed handle



Stand

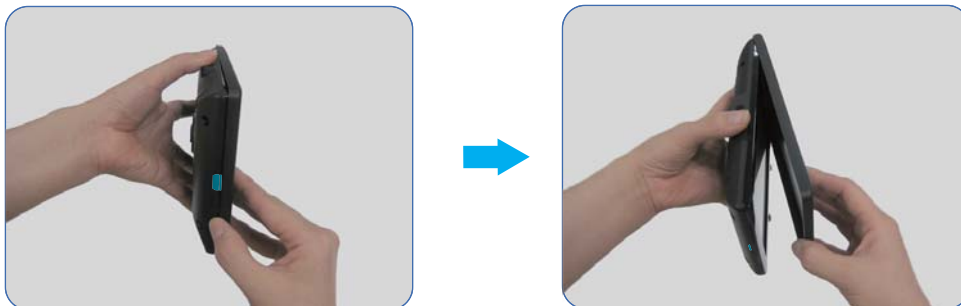
Before the use

Monitor Assembly

Stand assembly-type



* Refer to the following picture when opening the protective cover

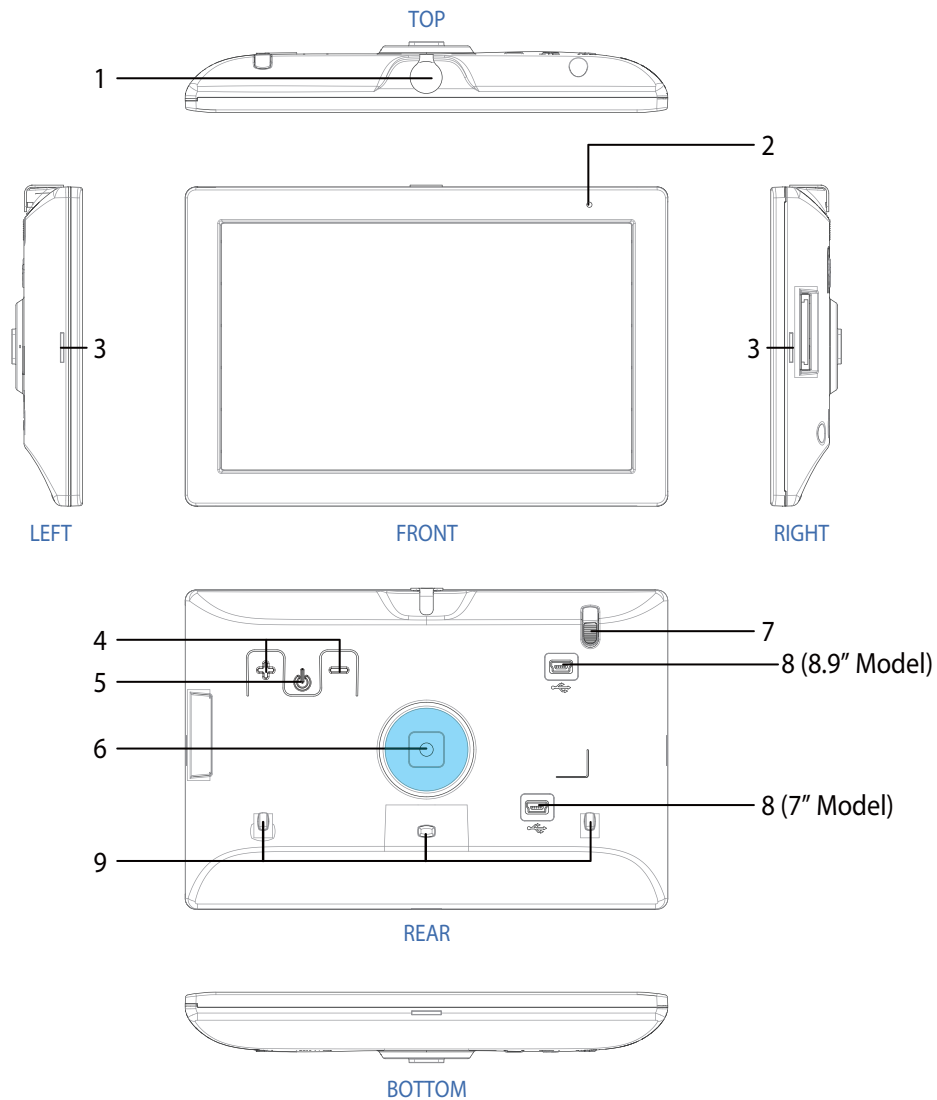


Remove the stand and facilitate the stylus pen when carrying



Before the use

Model name & function



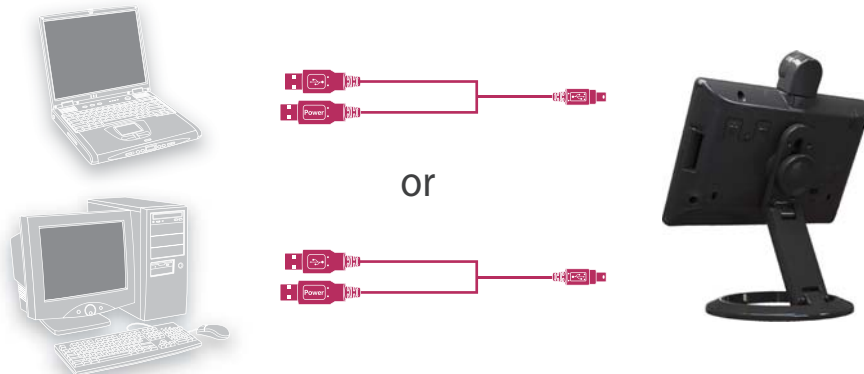
	Description	Funtion
1	Webcam Port	Place for attachment webcam. (refer to page5)
2	Power LED	When the USB monitor screen is turned on, it is marked in green color.
3	Cover fixing hole	Hole for fixing the cover.
4	+ , -	This is the button to adjust the brightness.
5	Power button	Power ON/OFF button.
6	Stand fixing hole	Stand is fixed here by jointer.
7	Easel Stand	For supporting the main body. (refer to page 5)
8	5Pin Min USB Port	USB cable is inserted here to connect monitor and PC.
9	Easel insert hole	Hole for inserting the Easel Stand.

Use of product

How to Connect & Use

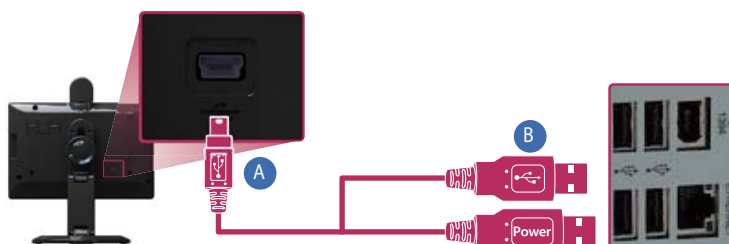
Connect USB Monitor

- Use the USB cable to connect the monitor and PC.



Caution : Only use the provided USB cable to Power your USB Monitor. Alternate cables may not provide the same power transfer and Monitor may not operate properly.

- Terminal A (5Pin Min USB) connects the monitor and two terminal B (Serial A USB) to PC.



*Note: A single USB connection will provide enough power from most computers.
A second USB connection to the PC may be required for computers with older USB specifications.*

Camera installation (Optional)

- When installing the camera, turn off the power switch on the back before installing.

Caution : If the Web Cam is inserted when the power is turned on, it may not operate property.

Caution : This Monitor is designed to work with a DoubleSight Web Cam only. Use of another Web Cam (or another Device) may result in damage to your Monitor.

Minimal requirement of system

CPU	Intel Pentium/Celeron,AMD/K6/Athlon/Duton 1.2Ghz
RAM	512MB RAM or more
USB Port	2 or more of USB2.0 (It is recommended to use two with the difference of some PC spec.)
HARD Disk	Spare space of 50MB or more
Supporting OS	The OS spec of PC can be confirmed from the 'General' tap of the system registration information window by selecting the 'attribute' with the right button of the mouse in 'My Computer' on the 'base screen. (1) Windows XP (32bit: Support, 64bit: Not support) - Service Pack 1 and previous version: Not support - Service Pack 2 and following version: Support (2) Windows 2000 - Service Pack 3 and previous version: Not support - Service Pack 4 and following version: Support (3) Windows Server 2003: Not support (4) Windows Vista: Support (32bit or 64bit support) (5) MAC OSX (Intel MAC) Require separate program (6) Windows 7 (32bit or 64bit support)

Driver Installation

Driver installation


- When the PC booting is completed, begin installation after connecting the USB cable.

1. You can see the right screen when you insert CD into CD-ROM.

- (1) Monitor & Touch Driver Installation
Double click to install USB monitor driver.

*  Please check your model name.

- (2) User's manual
Double click to see the user's manual.

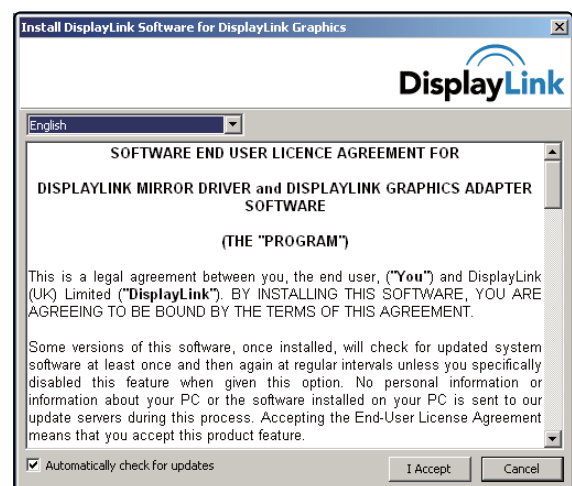
*  Please refer to Help unless you can see the user's manual.

- (3) Supporting OS
Double Click "Supporting OS" menu bar to check OS compatibility.

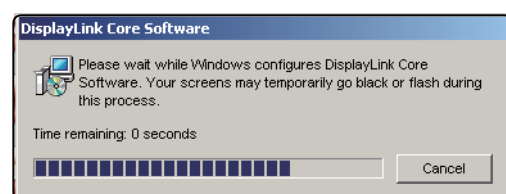
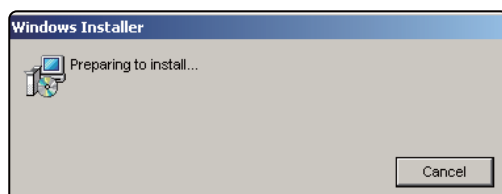
Note: If your PC has an OS which is not supported, you will not be able to complete the installation.



2. Select your language and click "I Accept".



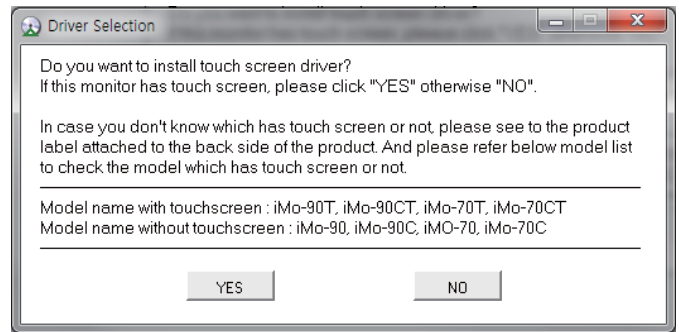
3. Installation screen appears.



Use of product

5. When monitor driver was installed successfully, as the window on the right will be appeared. According to instruction in window, please click "YES" or "NO".

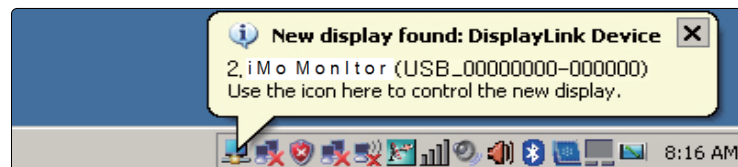
If click "YES", touch screen driver will be installed.



6. After completely installed, it is recommended to end the PC and re-start.

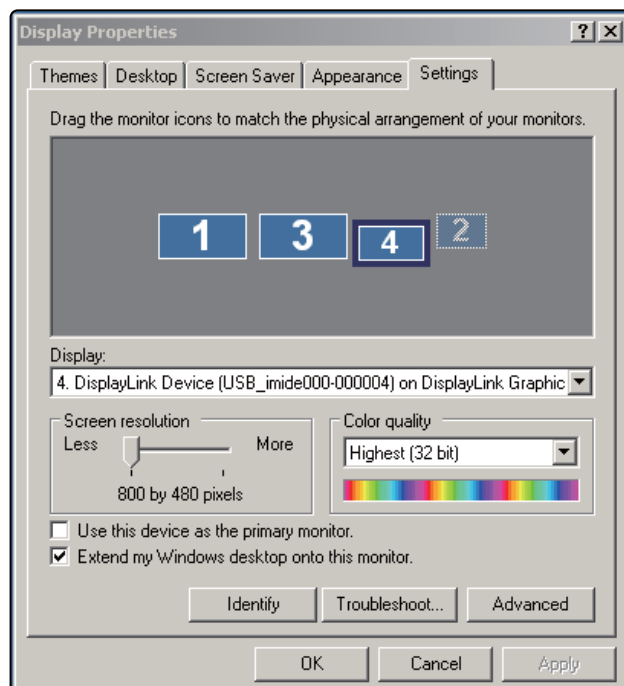
* When a problem arises, it is recommended to re-booting of the PC.

7. After completing the installation, the icon in the monitor shape is generated on the tray on lower right side of the monitor and the USB monitor information installed is displayed.



8. When completing the installation, setting has to be made as follows to use the monitor.

- (1) Press the right button on the base screen to have the 'Display Registration Information' window.
- (2) Click the 'setting' tap, all monitors connected are displayed.




9. Drag the monitors shown on the [Display Registration Information] window to arrange in sequence of actual use.

- 10 After setting up by pressing the 'Application' button, press the 'Confirmation' button to end.

* This USB monitor has the fixed resolution of 7":800x480, 8.9":1024x600.

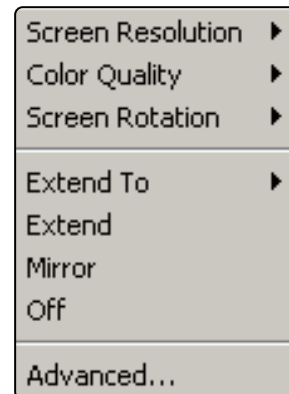
Use of product

USB Monitor Display Information setting

1. When the USB monitor and PC are connected with the USB cable and the driver installation is completed, the system tray on the right side of the screen generates the icon of the  monitor shape.



2. Click the monitor-shaped icon to press the right mouse button to display the set menu.

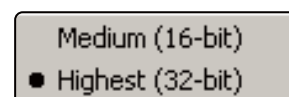


(1) **Screen Resolution (R)**

This is to display the current USB monitor resolution.
(However, this product 7" 800*480, 8.9" is the fixed resolution of 1024*600.)

(2) **Color quality (Q)**

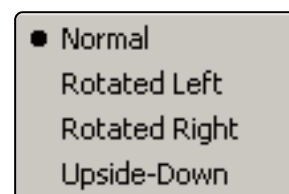
16-bit and 32-bit may be set up.



(3) **Screen Rotation (T)**

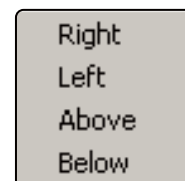
The screen direction may be set when pivoting the product.

* The initial set status is 0 degree.



(4) **Extend To (X)**

When extending the screen, it may set the USB monitor extension location.



(5) **Extend (E)**

The USB monitor may be used with the screen extension mode of the main monitor.

* The initial set status is the 'Extend' mode.

(6) **Mirror (M)**

The USB monitor may be used with the same screen mode of the main monitor.

* For the mirror mode, the screen is modified with the recommended resolution of the two screens.
(Changing of the main monitor to lower resolution is not a defect.)

Use of product

(7) Off (O)



The USB monitor screen is turned OFF. Under the Off condition, it still maintains the turning off condition while the PC is turned off that select "E" or "M" to have the screen back on the USB monitor.

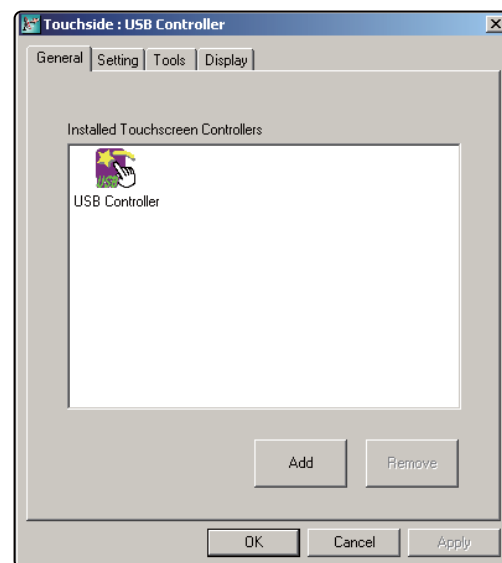
(8) Advanced.... (A)

It moves to the display set mode.

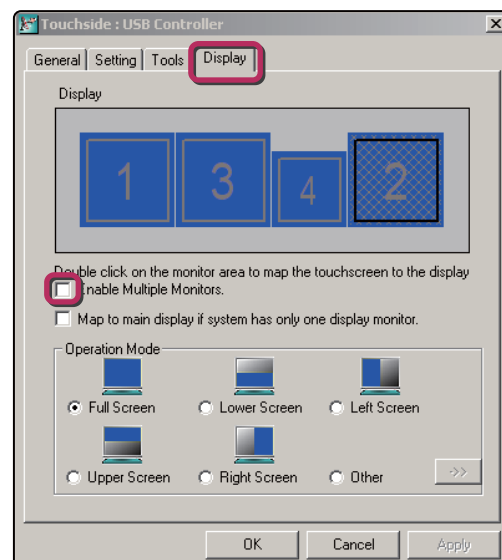
Touch Screen Setting

(This instruction is not application to the monitor without touch screen.)

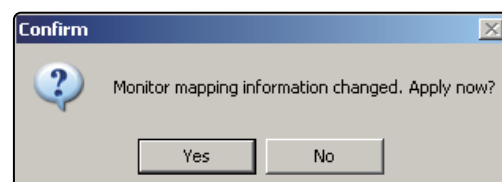
1. Please connect the monitor to PC.
2. Please click  icon in system tray.
3. USB Controller  icon appears when touch screen driver is ready.



4. Check "Enable Multiple Monitors" and double click the monitor setting screen.

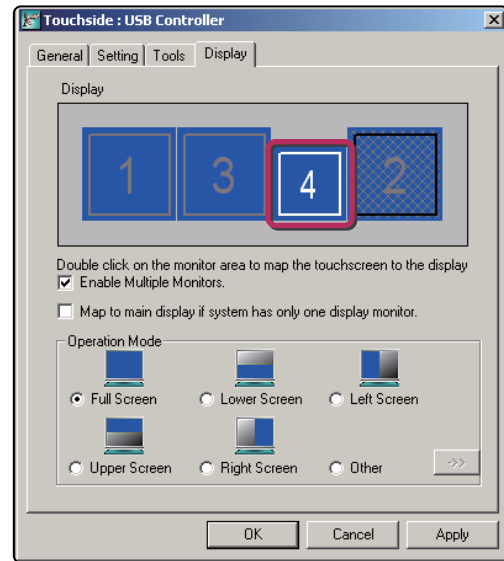


5. Click "Yes"

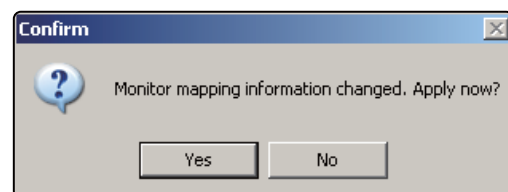


Use of product

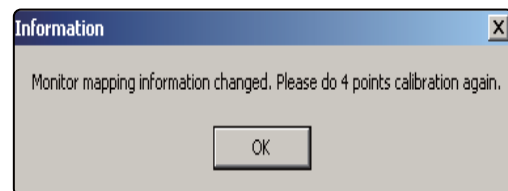
6. Click "Apply" when outline of display screen is changed to white line.



7. Click "Yes"

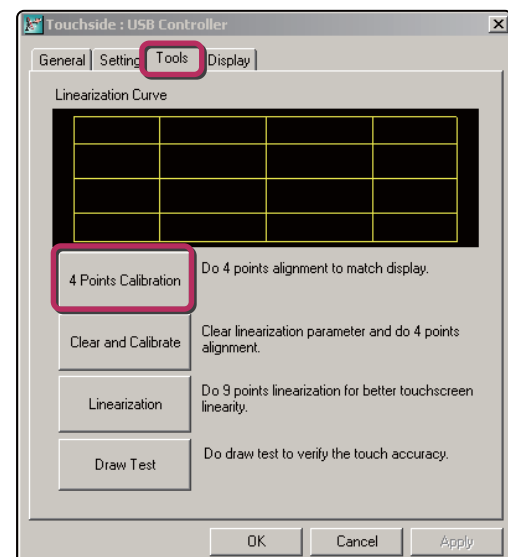


8. Click "Yes"



■ Calibration Setting

1. Click "Tools" tab and "4 points Calibration"



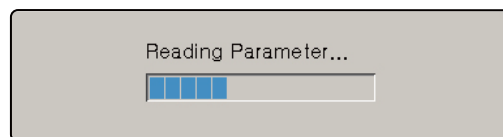
Use of product

2. Hold pressing flickering point until it to finish flickering and continue to enter next calibrations. (Enter 4 points)



3. Calibration setting is completed After entering 4 points.

* Please reboot PC when driver installation is completed.



USB Monitor Restrictions

■ Support spec

- This monitor is the USB monitor recognized as the USB device that the DOS screen shown in the PC booting will not be displayed.
- SW that uses the 3D acceleration function in HW cannot be used in the USB monitor. -
Real Player (Do not support the extension mode.)
 - Most of 3D game
 - Program driven by the basis of Direct X
- Supporting moving picture program
 - Power DVD
 - Win DVD (supporting version 5 or higher)
 - Windows Media Player (supporting Version 10 or previous version)
 - VLC
 - Gom Player
- On USB 1.0, the USB monitor may not normally operated.
- The power at USB 1 Port is weak that it may not be operated in some PC that it is recommended to use 2 USB Ports.
- PC H/W spec possible for extension
 - Connect 2 USB monitors: Minimum of 1.2GHz CPU / 512 MB Memory
 - Connect 3 USB monitors: Minimum of 1.8GHz CPU / 1 MB Memory
 - Connect 6 USB monitors: Minimum of 1.6GHz Dual core CPU / 512 MB Memory

Symptoms for possible problems and responses

- When there is any problem, make sure to check the followings first.

Q: The USB monitor screen is not displayed.

- A:** (1) Check if the USB cable is correctly linked and if the USB Driver is installed.
- (2) Check if the blue LED color on the USB monitor is come on and if the power button is turned Off.
- (3) Check if the tray monitor icon on the lower side of the monitor has 'Off'.
- (4) The USB monitor reads the general USB device on the PC. If quick and repeated turning on and off is made, the USB vice may have problems that you may refer to problem solving method for the USB device from the Customer Support site of Microsoft.
- Press the right button from "My Computer" of the base screen to display the 'Attribute' window.
 - Click the system administrator.
 - Press the HW change search from the motion menu.
 - Re-boot the PC.

Q: The screen on the USB monitor has stopped its motion.

A: Booting is not made after linking the USB monitor.

- (1) In the PC with on-board type that uses the i815 chip set mother board has to re-boot by changing the legacy USB support option to [No Change] at the BIOS set menu.

* The entry method of BIOS may differ depending on the PC that the manual of the PC in use has to be referred to. For detailed information, refer to the homepage of Microsoft.

Q: How can I remove the installed program of the USB monitor?

A: Select Program 'Add/Remove' from the control board to select the Displaylink Graphics from the list of 'currently installed programs' and click "Remove" to delete.

Q: Touch Screen doesn't work.

A: (1) After reconnecting USB cable, please check out the "USB Connection"  icon on touchside.

* If there is no icon, reconnect USB cable and on again.

- (2) When you change USB port or calibration get twisted, click 'Touchside - Tool - 4Points Calibration' and reset calibration.

- (3) Reboot PC after driver installation.

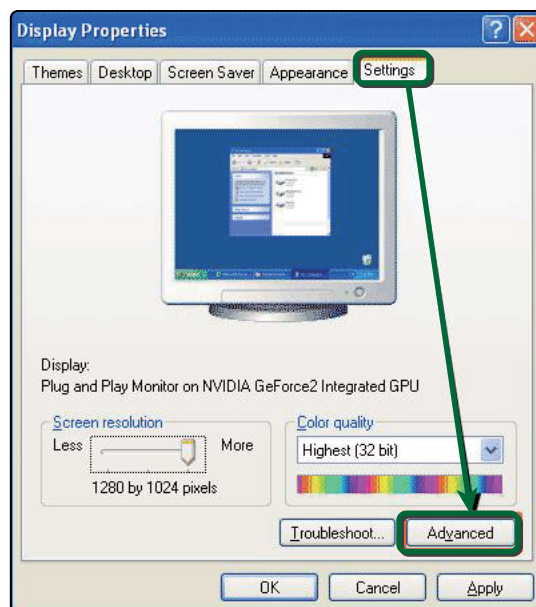
Q: When you use Skype video chat with Window XP OS, there may be flicker or distortion in screen.

A: The use of DirectX function causes this symptom.
Make sure not to use it on the graphic card setting because there is no option to disable this function on SKYPE.

OS: Windows XP

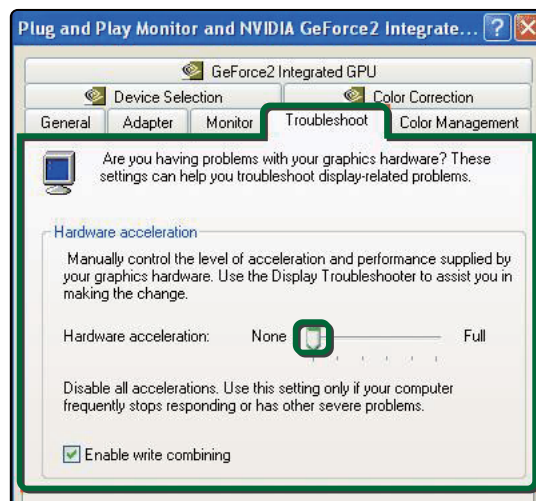
(1) On the desktop, right-click to display 'Display Properties' window.

(2) Click 'Settings' tab and click Advanced (V).



(3) Click 'Troubleshoot' tap.

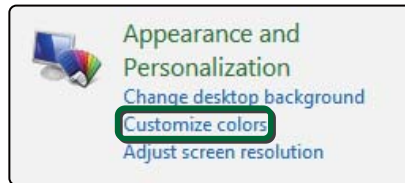
(4) Set 'hardware acceleration (H)'to None, and click 'Apply (A)' button.



User's Guide

OS: Windows Vista

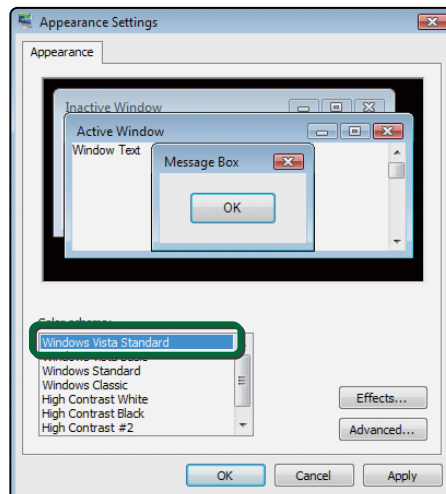
- (1) Select program 'Cumstomize colors' from the control panel



OS: Windows Vista Home premium, Business, Ultimate

- (1) Click "Window Aero"

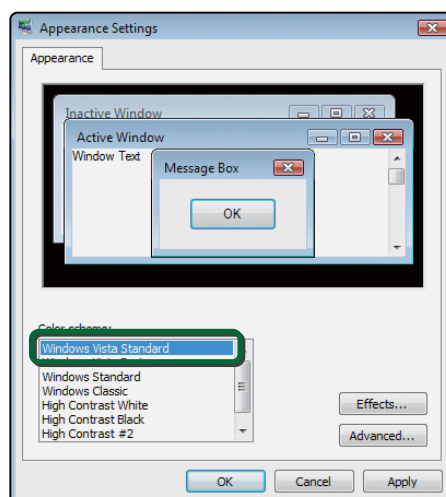
- (2) Click "Apply"



OS: Windows Vista Home basic

- (1) Click "Windows Vista Standard "

- (2) Click "Apply"



Specification

MODELS		iMo-70 Series iMo-eye7 Series	iMo-90 Series iMo-eye9 Series
Display	LCD Panel	7" Wide(17.78cm)	8.9" Wide(22.66cm)
	Resolution	800x480	1024x600
	Number of Colors	16.7M	262K Colors
	Brightness	375cd/㎡	200cd/㎡
	Contrast Ratio	350:1	300:1
	Viewing Angle (L/R/U/D)	65/65/35/55	45/45/15/35
	Response Time	30ms	30ms
Signal Input	USB Input	USB 2.0 High Speed x1 Web Camera Port(Optional)x1	USB 2.0 High Speed x1 Web Camera Port(Optional)x1
	Connector	USB Mini 5-pin B type	USB Mini 5-pin B type
Power	Power Input	USB Power	USB Power
	Power Consumption	3.3~4.99W	3.3~4.99W
Dimension	Size(WxDxH)	- With Stand : (W)180.2x(D)24.9x(H)204.5~236.5 - Webcam : (W)29.3x(D)24x(H)32.7 - Stand : ϕ 122	- With Stand : (W)235.5x(D)29.8x(H)249.6~208.1 - Webcam : (W)29.3x(D)24x(H)32.7 - Stand : ϕ 122
	Weight(g)	456g	592g
	Color	High Glossy Black	High Glossy Black

- Website : www.mimomonitors.com
- Customer support : www.mimomonitors.com/pages/customer-support

The information in this manual is subject to change without prior notice for improvement.

Unauthorized use or replication some or all of the contents in this manual without the prior approval of is prohibited.