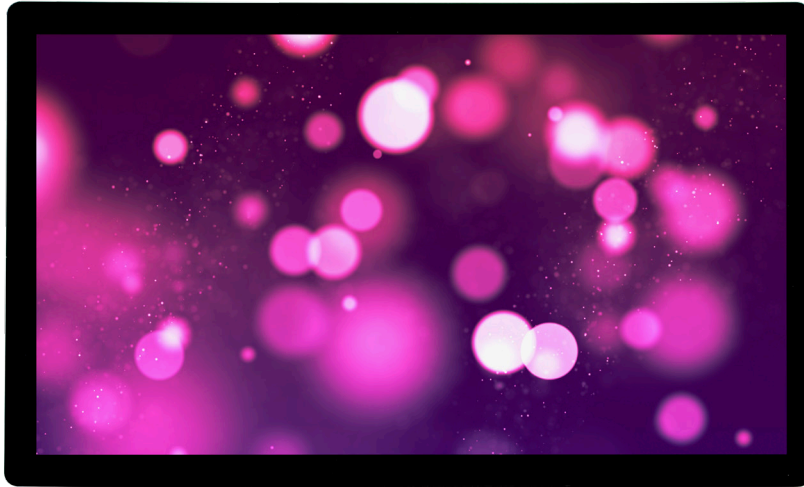


21.5" Outdoor Touch or Non-Touch, IP65 Rated, High Bright Display, with Audio, HDMI

MOD-21580H - Non-Touch
MOD-21580CH - Capacitive Touch



Product Specs	
Display Size	21.5 inch
Resolution	1920 x 1080
Brightness	1500cd/m2
Contrast Ratio	1000:1
Connections	VGA, HDMI, 3.5mm Audio, USB
Viewing Angle	89/89/89/89
Operating Temperature	-20 to 140c
Power Consumption	60W
Mount Pattern	VESA-100 x 200mm
Regulatory Certifications	FCC, CE, ROHS

21" Outdoor Touch or Non-Touch Display

The Mimo 21.5" Outdoor Display is perfect for many outdoor applications. This outdoor daylight readable display is built to withstand the outdoor elements, ranging from heat, cold, rain, snow, dust, sand and insects. Our outdoor displays are maintenance-free with no fans or filters that require ongoing maintenance and cleaning. The display's cover glass is optically bonded which increases the apparent contrast ratio and substantially cuts down on glare, providing a bright and clear picture even in direct sunlight. The Mimo Outdoor Displays are designed to survive year round outside, without worry of hot or cold temperature swings. These high bright commercial displays make them easy to see in bright ambient light conditions. The Mimo Outdoor Displays are perfect for quick serve restaurant confirmation boards, digital signage, entertainment and many other outdoor commercial applications.

Features:

- IP65 outdoor rating
- Optic bonded to reduce glare
- High bright, vivid screen
- Wide operating temperature for very hot & very cold conditions
- Multi-point capacitive touch screen optional (MOD-21580CH)

Applications:

- Outdoor digital signage
- Outdoor wayfinding
- Outdoor menu boards
- Outdoor stadiums
- Outdoor amusement parks
- Outdoor restaurants
- Outdoor transportation