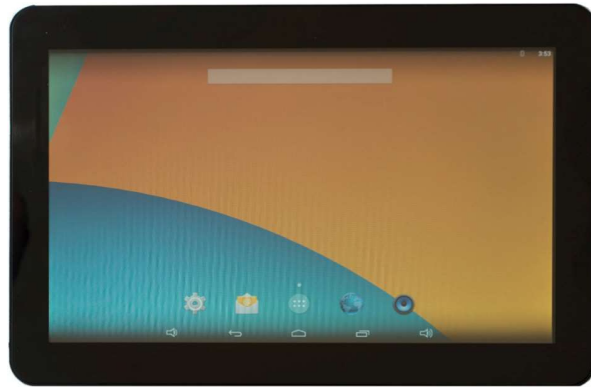


# Mlock Instruction Manual

## Adapt-IQ Digital Signage Tablets 7", 10.1" & 15.6"

Model: MCT-70QDS, MCT-70QDS-POE, MCT-10QDS, MCT-10QDS-POE, MCT-10HPQ, MCT-10HPQ-POE, MCT-156QDS, MCT-156QDS-POE, MCT-156HPQ, MCT-156HPQ-POE



\*Desktop background will vary depending on the Android version installed.



**Please keep this manual for future reference.**

### Table of Contents

What is MLock? .....	2
Mlock Configuration Example: .....	2
Mlock Installation and Operating Instructions: .....	2
Player Mode: .....	3
Mlock Console: .....	4
Video Settings: .....	6
Website Settings: .....	7
Default App Settings: .....	8
Scrolling Text Settings: .....	9
Content Update: (CMS – Content Management Server).....	11
Mlock Configuration Save and Load .....	12
Appendix A: .....	13

## What is MLock?

MLock is a pre-installed application, developed by Mimo Monitors, with the capability to “lock down” your device by securely disabling physical buttons and the touchscreen. MLock supports two methods of locking down your device. The first method is by configuring MLock to launch your custom application that will take control of the device. The second method is by using one of MLock’s two Play Modes, Video Player or Web Viewer, to display video content or lock the browser to a URL that you provide. Mimo Monitors also offers an MLock API that can be used to configure MLock from your application.

## MLock Configuration Example:

MLock allows you to choose from three available modes - (i) Video, (ii) Website or (ii) App.

The video and website mode can be set to auto start, which will automatically launch the specified video or website respectively, upon reboot.


When app mode is selected, the specified app will be always launched automatically upon reboot.

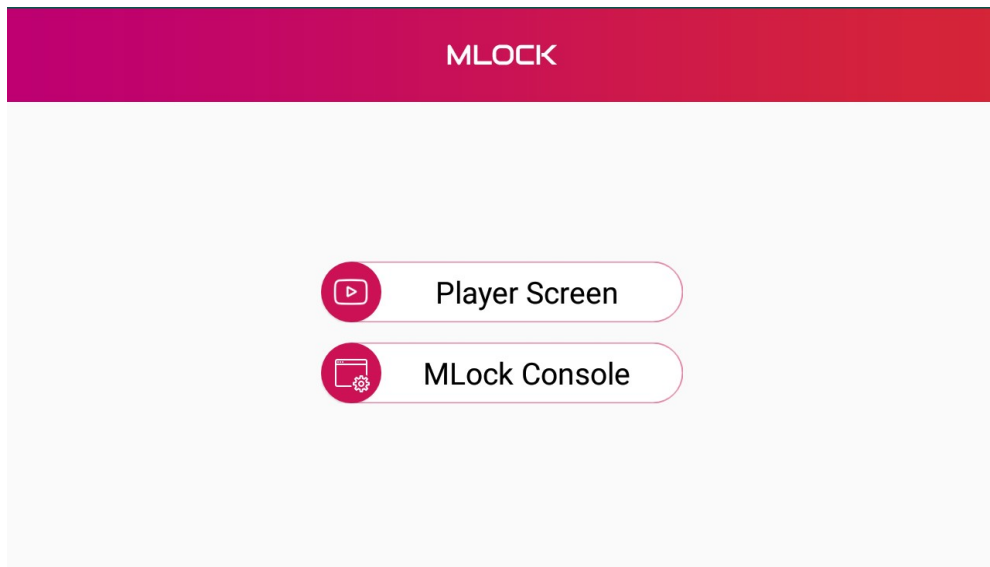
See table below listing different configuration modes:

MLock Configuration and Resulting Lock Down Mode					
Play Mode	Video		Website		App
(MLock) Auto Start	<input type="checkbox"/>	<input checked="" type="checkbox"/>	<input type="checkbox"/>	<input checked="" type="checkbox"/>	N/A
Resulting Mode	Home screen	Video	Home screen	URL	App

Table 1 - MLock Configuration Modes

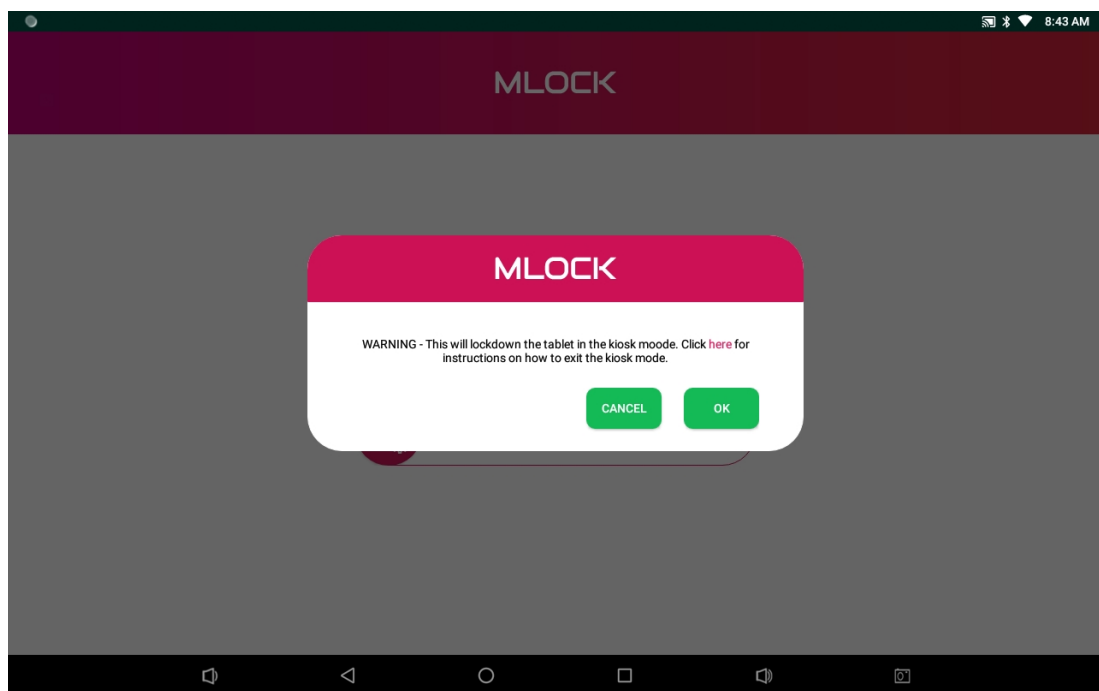
## MLock Installation and Operating Instructions:

1. Using the APKinstaller/File Explorer application to install **MLock** onto the Android Tablet.
2. MLock may also be pre-installed during manufacturing. The MLock icon  can be found on the main application menu.
3. Once the installation has completed, launch the app. The landing page for MLock will open showing buttons to start the app in player mode or to open the MLock console.



## Player Mode:

1. Tapping the 'Player Screen' option will show a confirmation pop-up.



Selecting OK will start the app in Player Mode, which will open the MIMO monitors website by default.

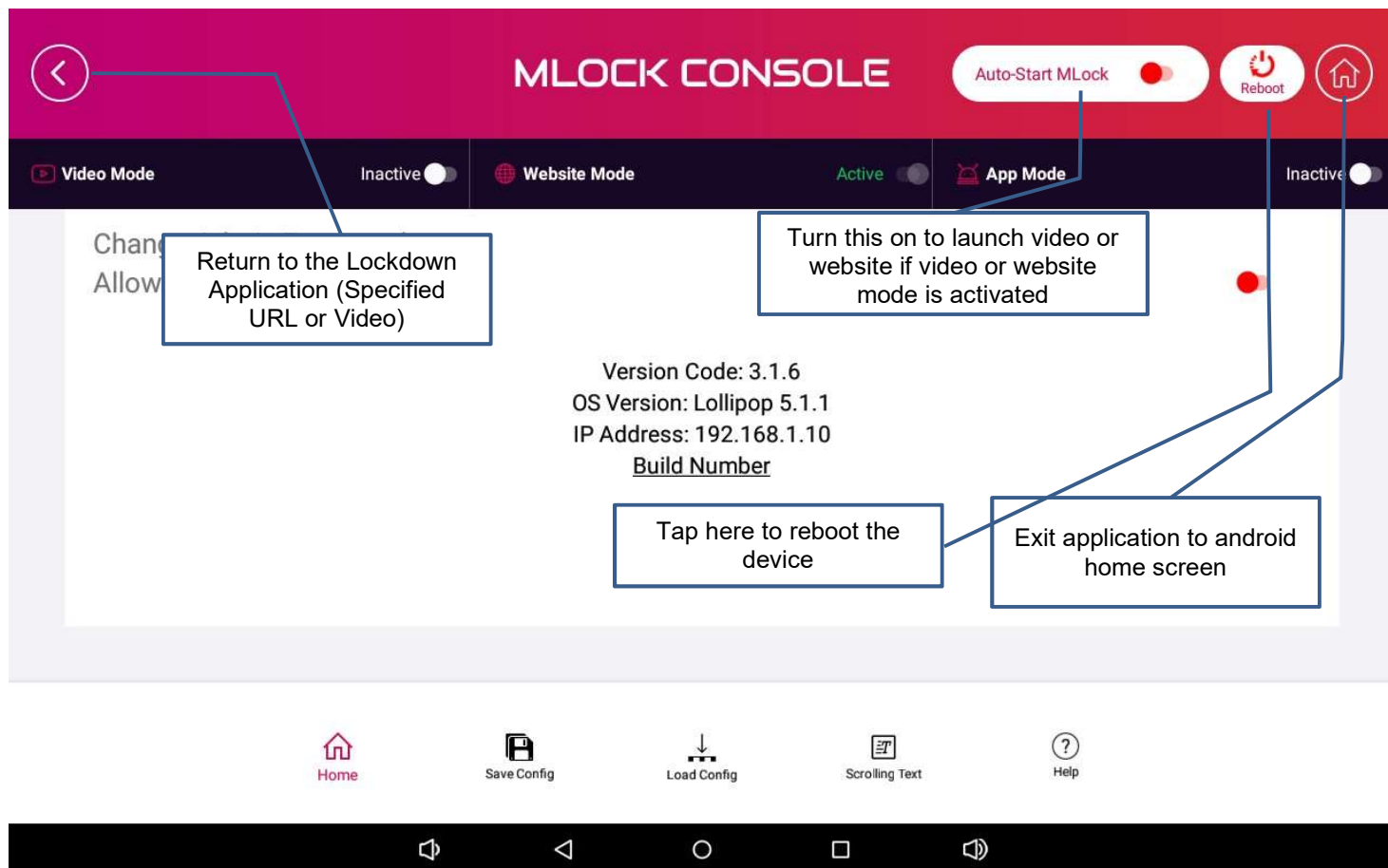
2. To come out of the player mode, tap and hold the top right corner of the screen for at least 3 seconds.



3. This will prompt you for a password (default is **0000**) and you will be taken to the MLock console screen.

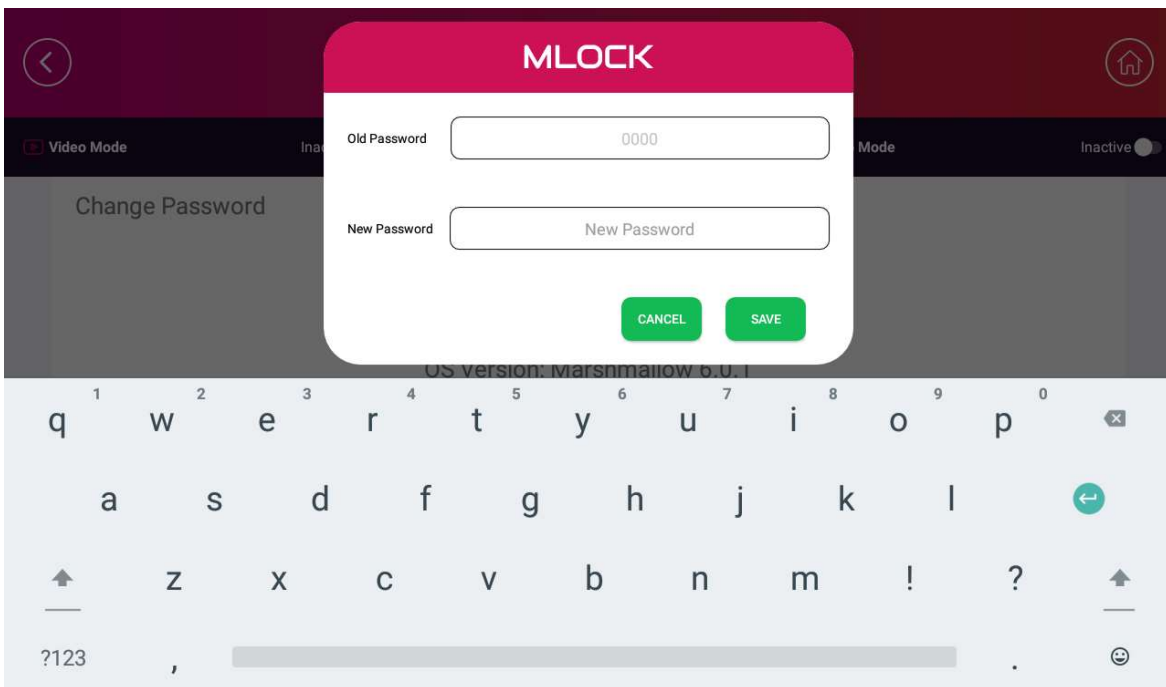
## MLock Console:

1. Tapping the “MLock Console” option will prompt you for an admin password (default is **0000**) and open the MLock console screen.



2. Clicking on the any of the three toggle switches in top black bar activates the corresponding play mode. The default mode is the website mode.
3. To exit the MLock application, select the Home icon in the top right-hand corner.
4. To go to the player screen (lockdown mode) select the Back icon in the top left-hand corner.

5. Tapping on the “Change Admin Password” text opens a popup allowing you to change the admin password.



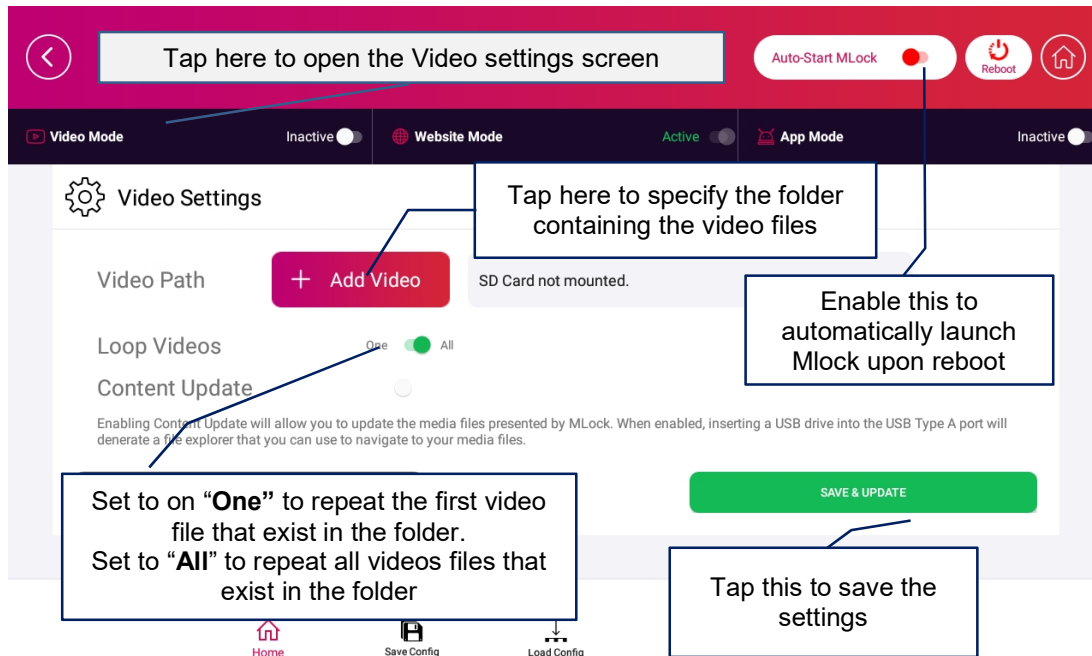
6. Switching on the “Allow Guest User” mode will allow you to setup access to the MLock console as a guest user. Access to MLock console as a guest user will only allow you to access basic features on the MLock console such as rebooting, switching to lockdown mode, and saving the Mlock configuration.
7. Tapping on the “Change Guest Password” text opens a popup allowing you to change the guest user password.

**Note:** The password you set for the guest user MUST be different from the admin password. The default guest user password is **7777**.

Once you have setup the guest user password you can enter either password to enter Mlock. As previously mentioned, if you enter the Guest password you will have access to a limited feature set.

## Video Settings:

On the MLock console, tap on the “Video Mode” text on the top grey bar. This will open the video settings screen.



Tapping the “+ Add Video” button will open a pop-up allowing you to navigate to the folder that contains the video files. You cannot select individual files but rather just the folder where video files are located. When active, the video player will automatically identify video files in the location you specify and play them.

## Website Settings:

On the MLock console, tap on the 'Website Mode' text in the top black bar. This will open the website settings screen.

The screenshot shows the MLock Console interface with the Website Settings screen open. The top navigation bar is red and contains a back arrow, the text 'MLock Console', and buttons for 'Auto-Start MLock' (with a red toggle), 'Reboot', and a home icon. Below this is a black bar with three mode options: 'Video Mode' (Inactive), 'Website Mode' (Active), and 'App Mode' (Inactive). The main content area is white and titled 'Website Settings'. It features a 'Web URL' field with the text 'http://www.mimomonitors.com'. Below the URL are three checkboxes: 'Will auto-refresh broken URLs every 10 seconds' (checked), 'Disable Cookies (some websites may not work with cookies disabled)' (unchecked), and 'Disable Saving Form Data' (checked). To the right, there is a section for 'Enable Auto Refresh Website' (toggled on) and 'Auto Refresh Time in Mins' set to 15, with minus and plus buttons. A green 'SAVE & UPDATE' button is at the bottom of the settings area. A bottom navigation bar contains icons for Home, Save Config, Load Config, Scrolling Text, and Help. Several callout boxes with lines pointing to specific elements provide instructions: 'Tap here to open the Website settings screen' points to the Website Mode text; 'Enter the URL of the website' points to the Web URL field; 'Enable this to automatically launch' points to the Auto-Start MLock toggle; 'Enable/Disable cookies for website.' points to the Disable Cookies checkbox; 'Set this to refresh broken URLs automatically every 10 seconds.' points to the Will auto-refresh broken URLs checkbox; 'Enable/Disable save form data.' points to the Disable Saving Form Data checkbox; 'Enable/Disable Auto refresh and set refresh time' points to the Auto Refresh Website toggle and time selector; and 'Tap this to save settings' points to the SAVE & UPDATE button.

## Default App Settings:

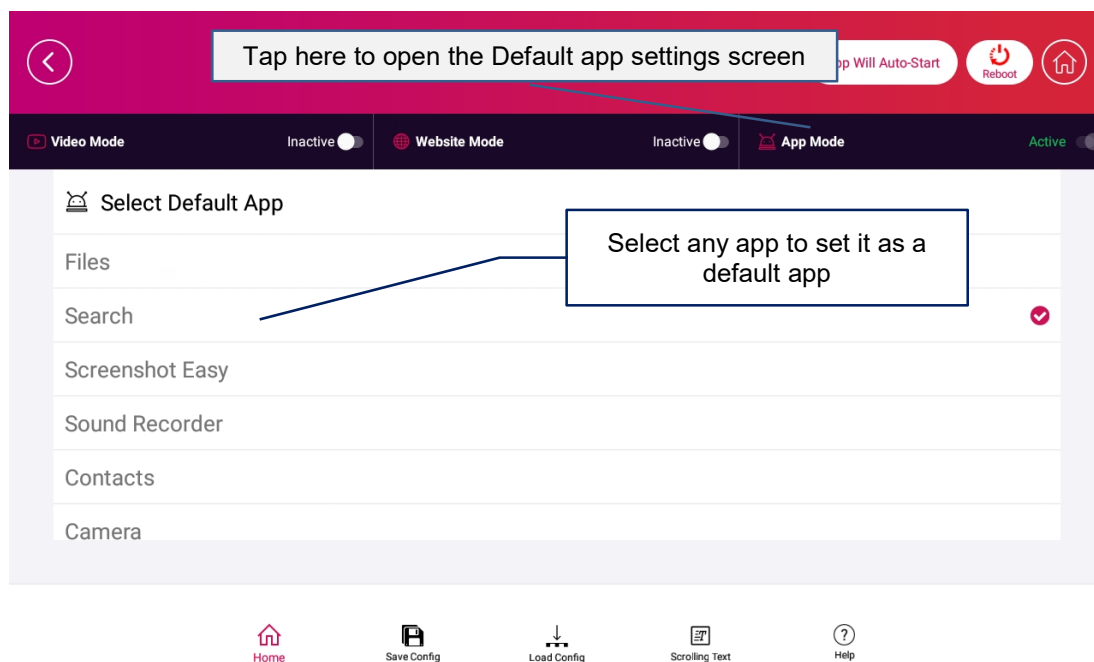
On the MLock console, tap on the “App Mode” text on the top black bar. This will open the app settings screen.

If you have selected the play mode as “App Mode”, then the app selected on this screen will automatically be launched when the device is **powered-on**.

For the application to take control of the device (i.e. launch into the application), the device **MUST** be power cycled after configuration. This is unlike either MLock Play mode which can be launched by simply clicking on the “Player screen” on the MLock landing screen or the Return button from the MLock Console.

Note: The status bar and physical buttons will be in whatever state they were in before you power cycled the device. If you need them to be removed or disabled, you need to design that into your application.

**WARNING:** If you create your own application be sure to design in an “escape”. Once the device re-boots into an application, Mlock is no longer running and pressing in the top right corner will not escape your application.

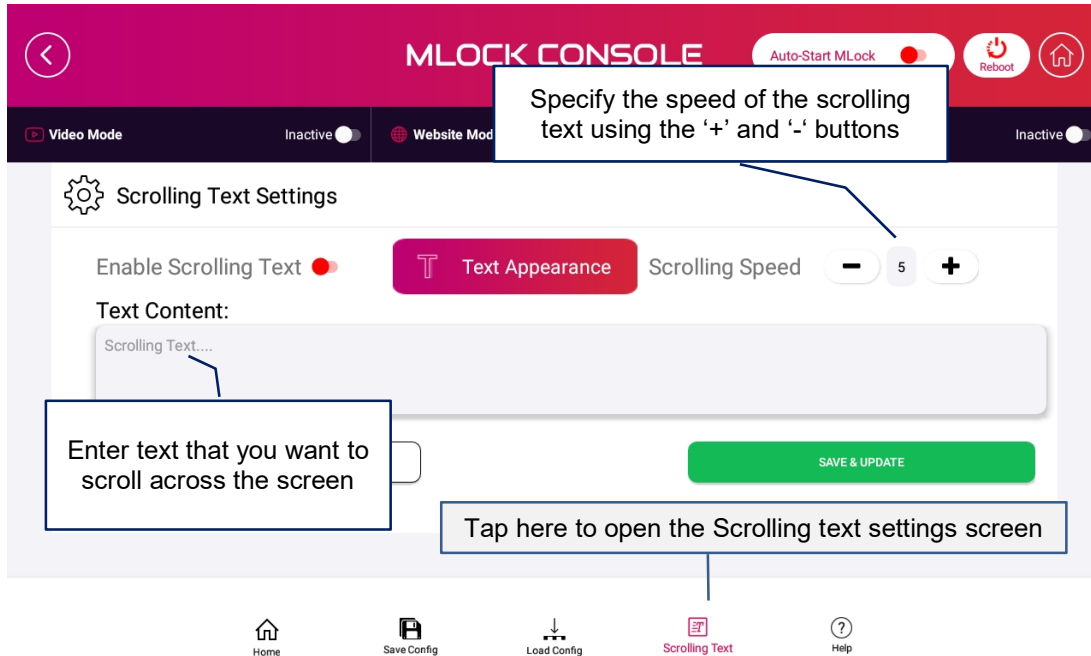




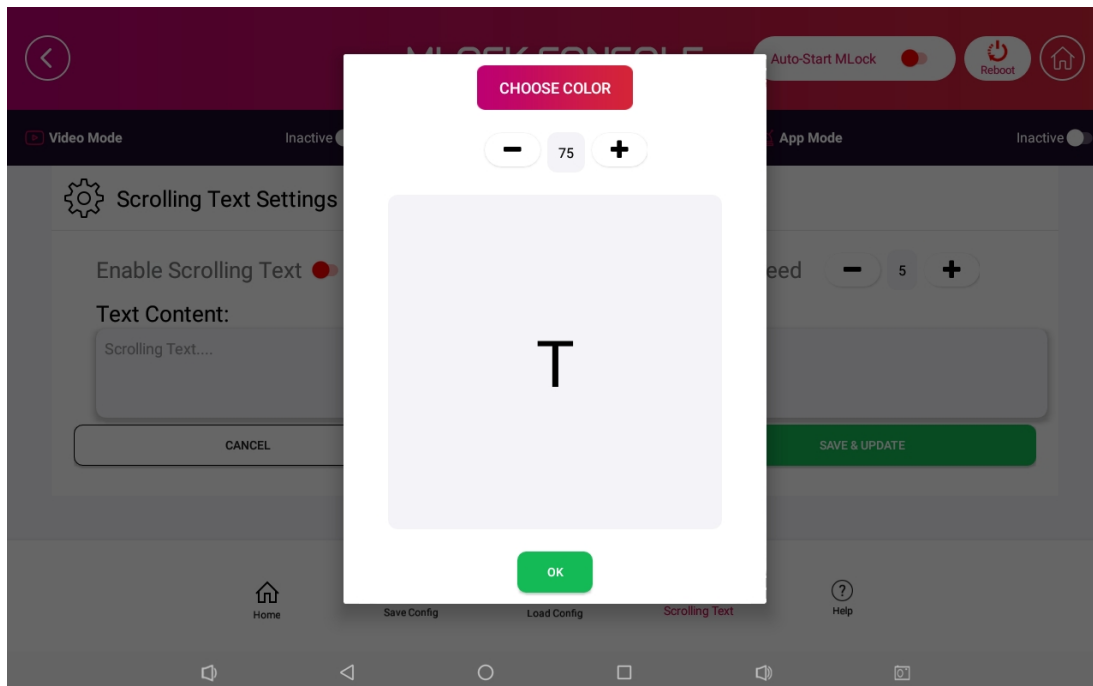
## Scrolling Text Settings:

On the MLock console, tap on the “Scrolling text” icon to open the Scrolling Text settings screen. When configured, the scrolling marquee will appear on the bottom of the display.

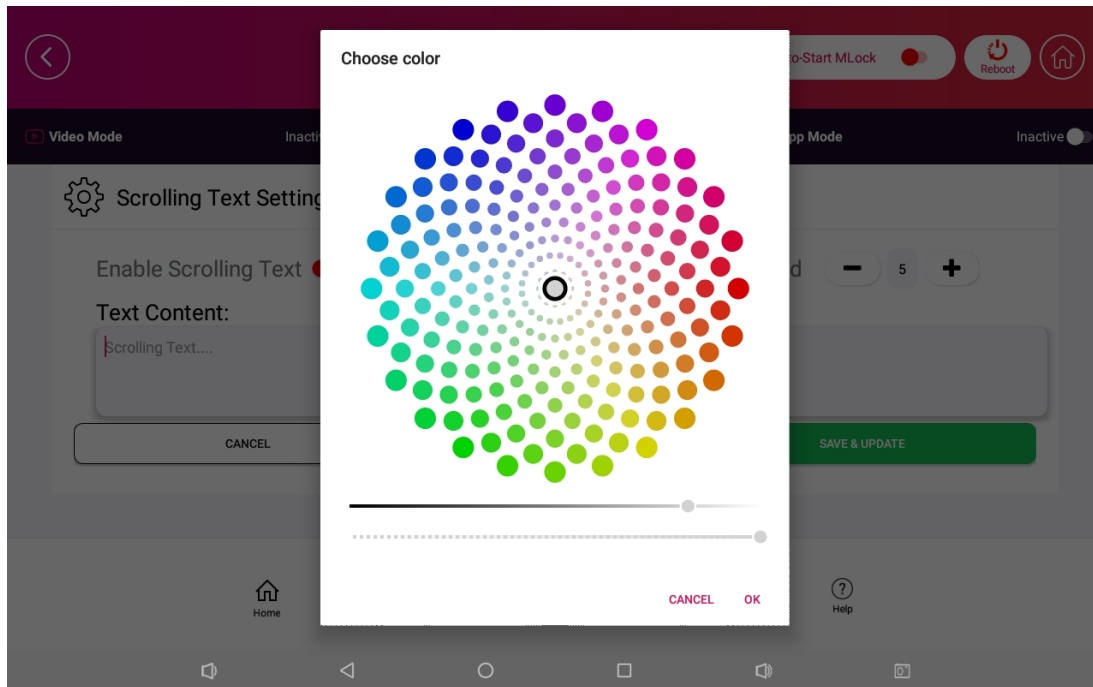
Note: You need to check Android Settings ->Developer options -> Disable HW overlays. This capability can be turned off in that location.



Select “Text Appearance” to open a popup that will allow you to change the size of the text.



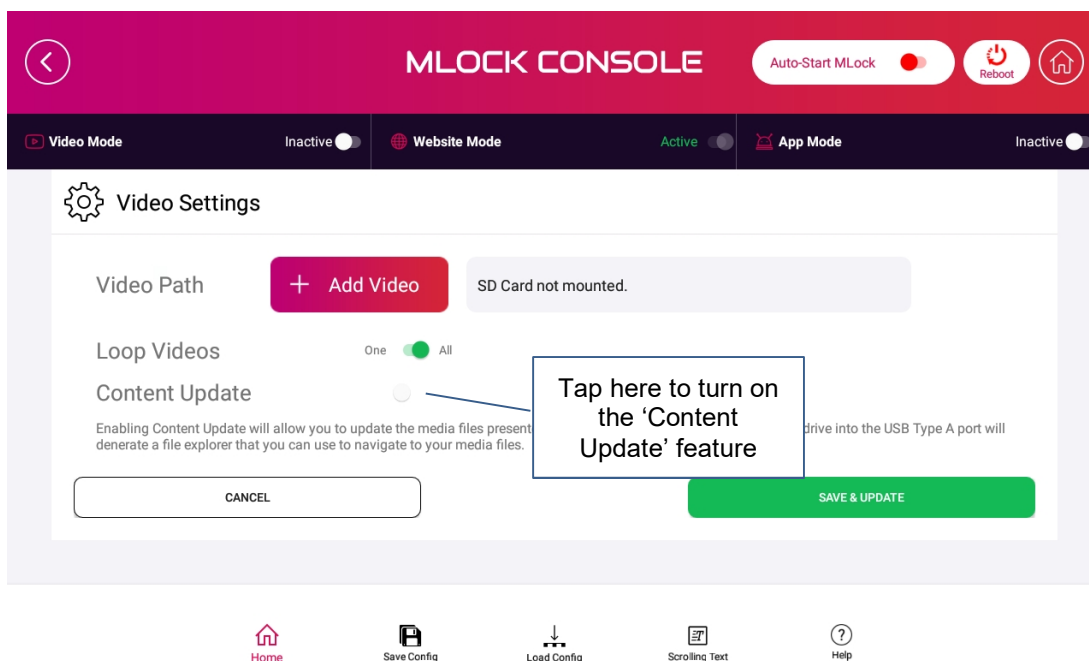
Select "Choose color" to open a popup that will allow you to change the color of the text. You control the color by manipulating the sliders below the color chart.



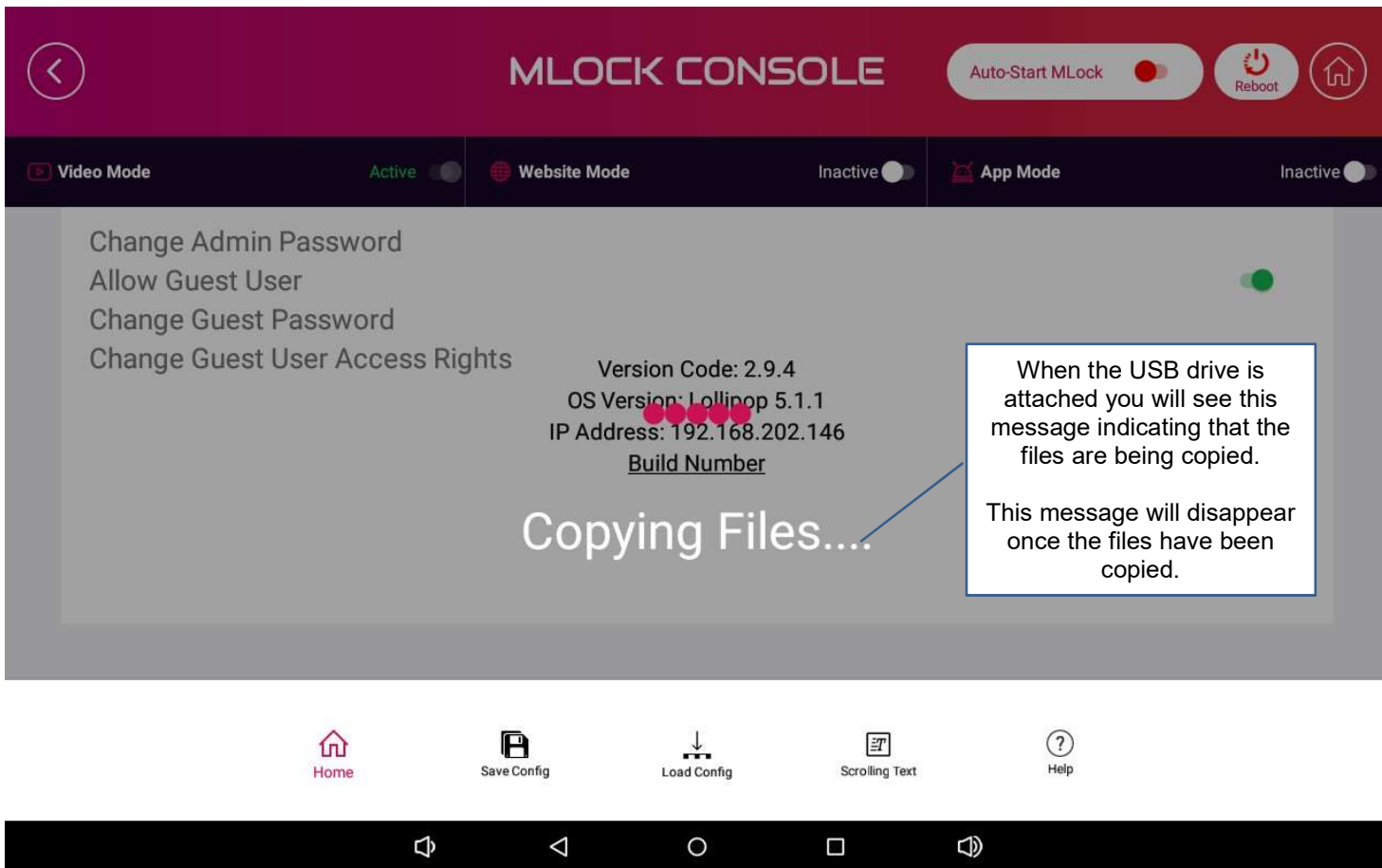
# Content Update

## USB Update

This feature transfers video files from a USB drive to the location specified as the video path on the video settings screen. This feature can be turned on from the video settings screen.



If this feature is turned on, then whenever a USB drive is attached to the device a popup will open up asking you to select the location where you want to import the videos from. Once you have selected the location, the video files will be copied from the USB drive to the location specified in the video path of the video settings screen.



## MLock Configuration Save and Load

MLock Configuration allows for a user to save MLock settings to an SD or USB device, allowing for a quick transfer of saved settings to another tablet. Effectively eliminating the process of manually configuring MLock settings individually across multiple devices.

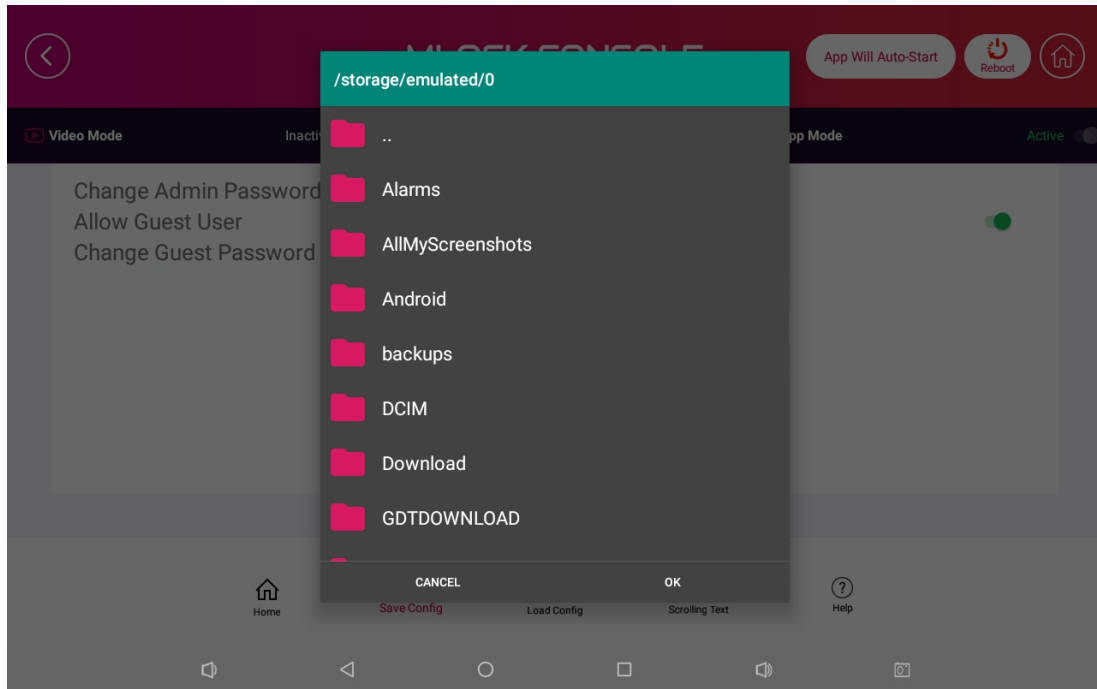
### Function introduction:

1. Config Load: Used to load the MLock\_config.xml file.
2. Config Save: Saves the MLock\_config.xml file.

**Appendix A:** Provides additional information on how to view Configuration files in a web-based browser.

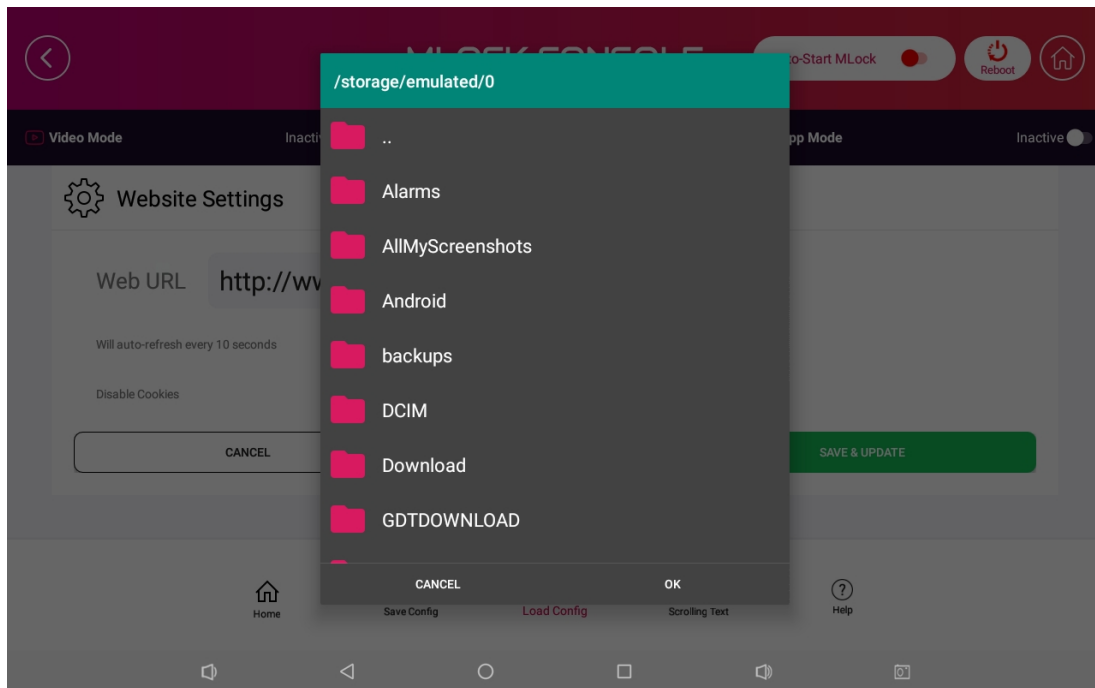
### Instructions:

1. Open the MLock Console.
2. Select "Save Config" icon in the bottom bar



3. A pop-up dialog box asking you to select a location where the configuration file will be saved. (Shown above)

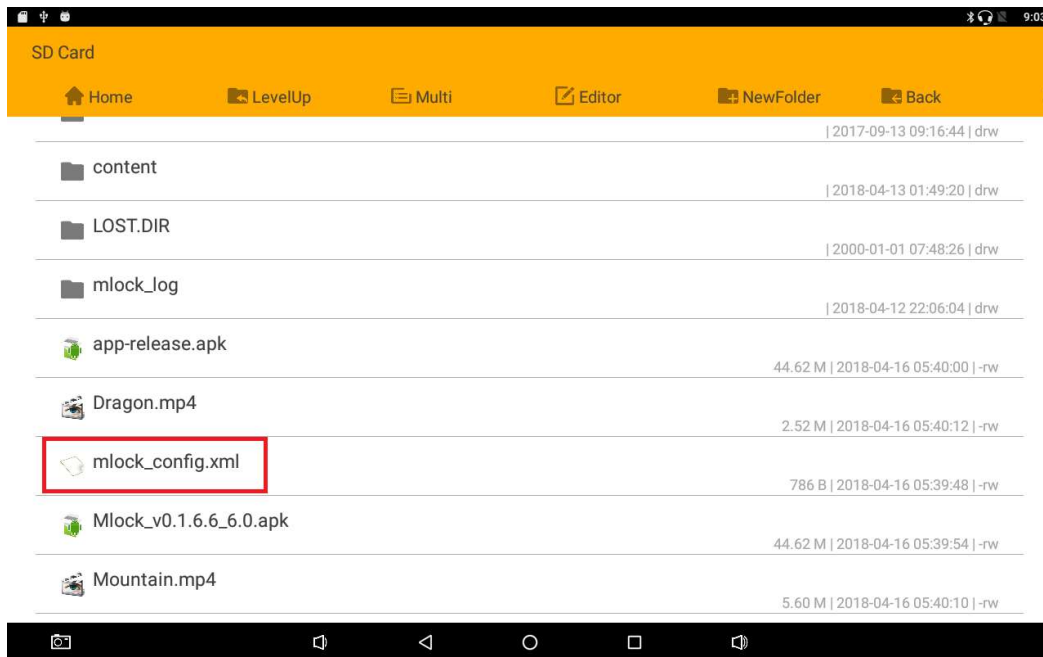
4. Select "Load Config" icon in the bottom bar to select mlock\_config.xml files from either a USB drive or an SD card.



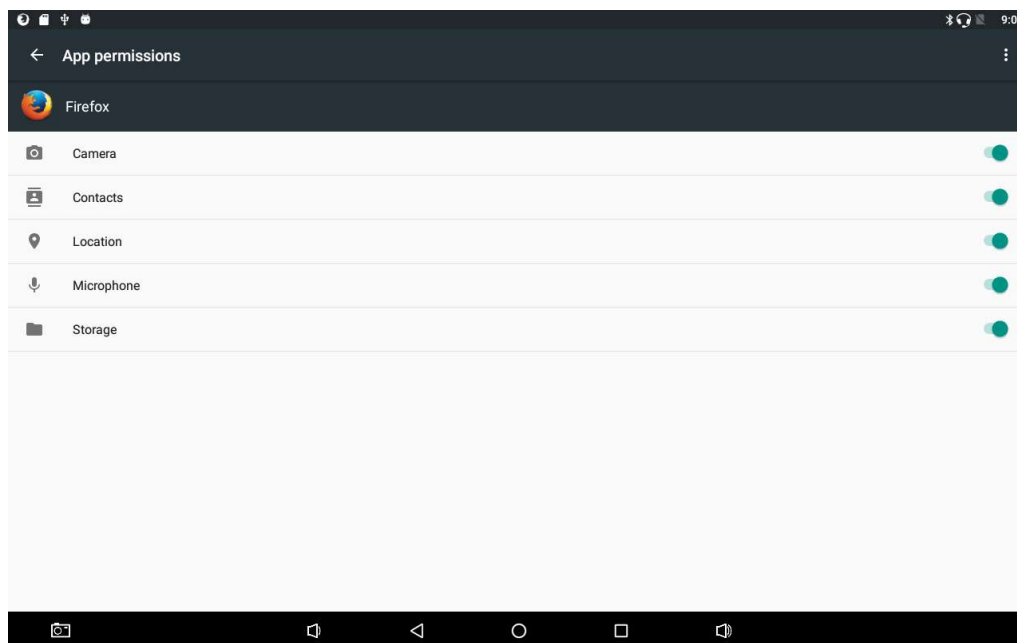
When the mlock\_config.xml file does not exist on the USB drive or the SD card, clicking on "Config Load" will prompt the error message "SD and USB have no configuration file".

## Appendix A:

An mlock\_config.xml file located on an SD card. Enter the SD card from the Explorer.



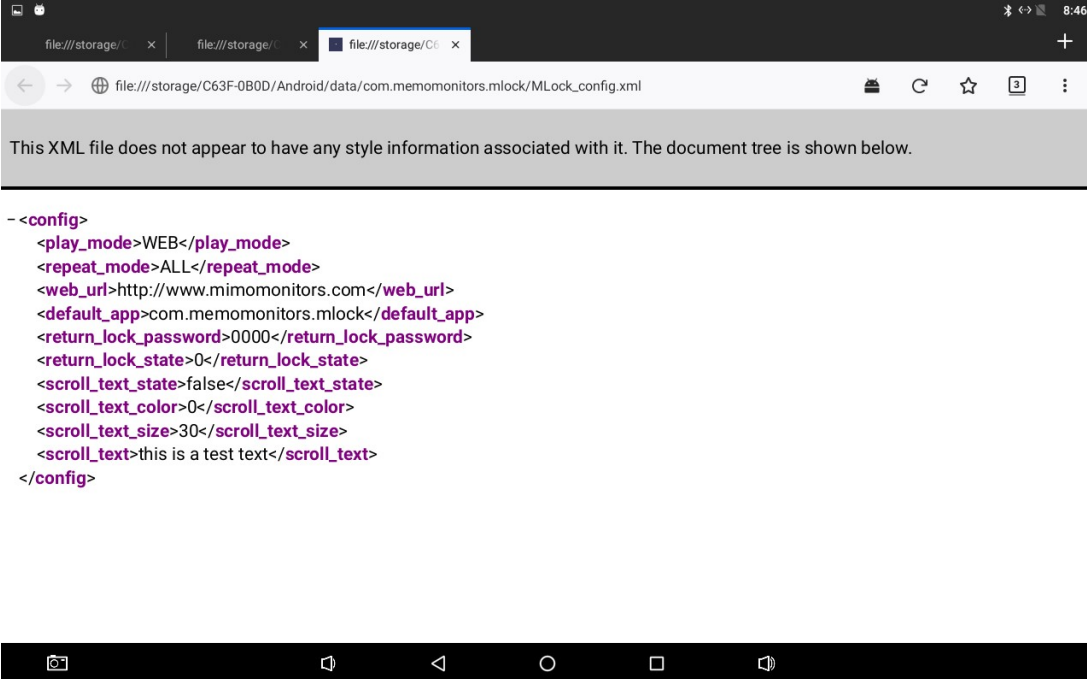
You can use Firefox to view the content of the configuration if permissions allow.  
*Settings->Apps->Firefox->Permissions->Individually click All Permissions to "ON".*



**Mimo Monitors**  
743 Alexander Rd. Suite 15  
Princeton, NJ 08540

info@mimomonitors.com  
Sales: **1-855-YES-MIMO (937-6466)**

The configuration contents are shown as follows:



The screenshot shows a mobile browser interface with three tabs. The active tab is titled 'file:///storage/C63F-0B0D/Android/data/com.memomonitors.mlock/MLock\_config.xml'. The address bar contains the file path. Below the address bar, a message states: 'This XML file does not appear to have any style information associated with it. The document tree is shown below.' The XML content is displayed in a monospaced font with syntax highlighting. The root element is <config>, containing several child elements: <play\_mode>, <repeat\_mode>, <web\_url>, <default\_app>, <return\_lock\_password>, <return\_lock\_state>, <scroll\_text\_state>, <scroll\_text\_color>, <scroll\_text\_size>, and <scroll\_text>.

```
- <config>
  <play_mode>WEB</play_mode>
  <repeat_mode>ALL</repeat_mode>
  <web_url>http://www.mimomonitors.com</web_url>
  <default_app>com.memomonitors.mlock</default_app>
  <return_lock_password>0000</return_lock_password>
  <return_lock_state>0</return_lock_state>
  <scroll_text_state>>false</scroll_text_state>
  <scroll_text_color>0</scroll_text_color>
  <scroll_text_size>30</scroll_text_size>
  <scroll_text>this is a test text</scroll_text>
</config>
```

**Mimo Monitors**  
743 Alexander Rd. Suite 15  
Princeton, NJ 08540

info@mimomonitors.com  
Sales: **1-855-YES-MIMO (937-6466)**