

OPTIMA
APOS SERIES
 11.6" TOUCH SCREEN



APOS-05L

A TRUE COMPLETE ALL-IN-ONE POS SOLUTION

Refined POS Terminal For Medium to Large Size Business Applications

The Optima APOS-05L®, is the "Light" cost effective version of the APOS-05. It is a true All-In-One POS Terminal equipped with a large 11.6" for medium and large commercial applications such as supermarkets, larger restaurants and retailers! The Optima APOS-05L® features a Rockchip Processor, and Thermal Receipt Printer with fast paper roll replacement & Auto Cutter, Bluetooth, and WIFI.

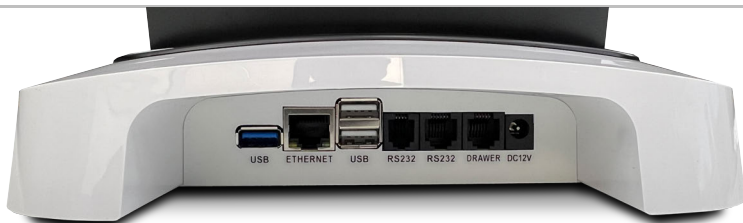
POS Software with NO Monthly Fees!

Buy it once and own it forever! Let's face it, businesses are often offered free basic point of sale systems, but in the end, get slapped with unanticipated monthly or hidden fees. Optima APOS offers full featured POS system for a one time purchase with lifetime updates included and no monthly fees that will instantly help improve your cash flow and long term savings.



Accept a wide range of payment options

Thanks to our integration to Datacap the APOS series integrates to every major processor in North America. In addition to major processors, Datacap also supports 1,000's of ISOs and merchant service providers.



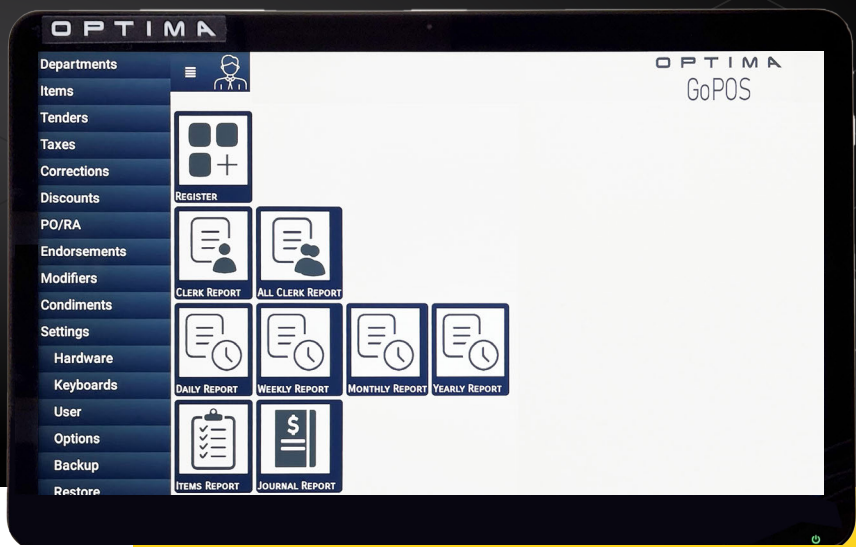
Power-packed performance

APOS-05L model is designed and tested to withstand the busiest checkouts! Equipped with Rockchip quad-core processor, its high energy efficiency and low power consumption characteristics ensure the stable, efficient and safe system operation of the product. All Optima APOS Series systems are also equipped with Ethernet, USB, R232 and Cash Drawer Ports to readily support all your POS accessories.

EMBEDDED WITH

OPTIMA

GoPOS

Optima GoPOS® Software

The **OPTIMA APOS Series** is embedded with our proprietary Android OS based Optima GoPOS® software offering smoother functionality to meet the needs of various business applications such as retail & convenience stores, restaurants and supermarkets.

Optima GoPOS® is frequently improved with software updates by adding new feature releases, functions, enhancements and performance improvements.

Optima GoPOS Features

- **Unlimited Products**
- **Unlimited Departments**
- **Unlimited Tenders**
- **Unlimited Keyboards**
- **User friendly intuitively designed interface**
- **Barcode scanning** (*compatible with all optima scanners*)
- **PC Software Included**
- **Back Office Integration Ready**
- **Transfer mobile compatible**
- **3rd party payment integration support**
- **Customizable keyboard layouts**
- **Monthly Sales Reporting**
- **Custom reports supported**

Specifications

Model		APOS-05L
Host	Processor	Rockchip Series
	Operating system	Android 7.1
	RAM	2 GB
	Storage	16 GB (eMMC)
	Power supply	12V 5A
Ports	USB2.0	4
	Serial port	2
	Cash drawer	1
	Ethernet	1
Options	WIFI	IEEE 802.11 b/g/n/d/e/h/i
	Bluetooth	V2.1 +EDR/BT v3.0/BT v3.0+HS/BT v4.2
	Scanner	Support one-dimensional, two-dimensional scanning
	Fingerprint module	Support
	Face recognition	Support
Display	Display	11.6" (1920 x 1080p)
	Touch screen	Capacitive
	Customer display	N/A Available on APOS-05 only
Printer	Thermal printer	3 1/8" with auto cutter (80mm x 80mm)
	Speed	150mm/s
Size	Dimension	43cm(L) x 30cm(W) 49cm(H)
	Weight	5.3 Kg

Dimensions



OPTIMA GROUP

1415 Pembina Highway, Winnipeg, MB, Canada, R3T 2C2 Tel: (204) 488-2274 Fax: (204) 488-3923
 Email: sales@optimagopos.ca Website: www.optimagopos.ca