



THE
KATHARINE

BLAZER BY CLASSIC SIX



CLASSIC SIX
NEW YORK

INSIDE

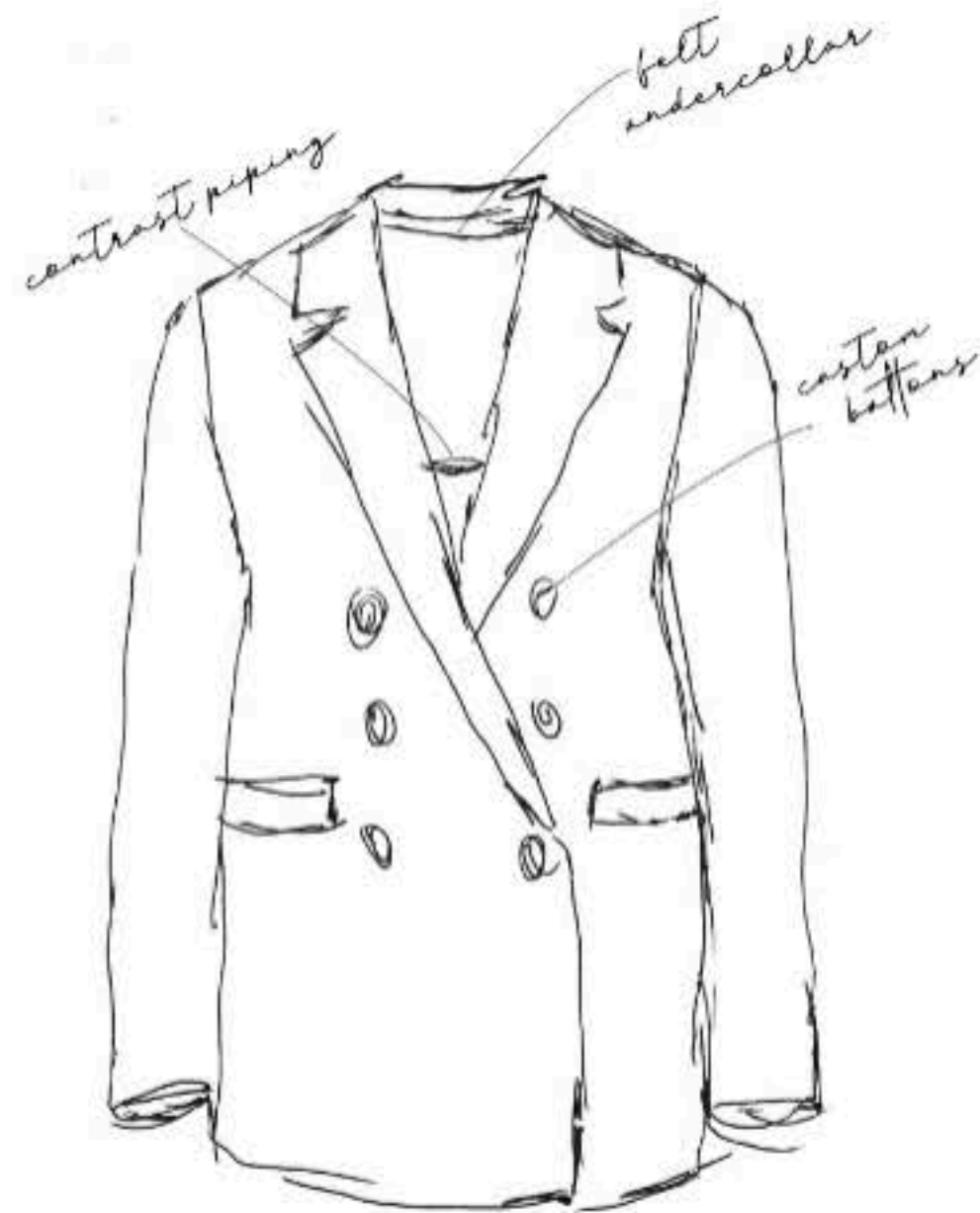


"The Katherine"

J. Le Moraco

DESIGNER NOTES:

FOR YEARS, I HAD BEEN ON AN ENDLESS SEARCH FOR THE PERFECT DOUBLE-BREADED BLAZER. I COULD NEVER FIND ONE THAT WAS COMFORTABLE, WITH THE RIGHT CUT, IN A FABRIC THAT I KNEW WOULD STAND THE TEST OF TIME, PLUS ONE THAT HAD BEAUTIFUL AND SPECIAL DETAILS. WHEN I WAS DECIDING WHAT SILHOUETTES I WANTED TO DESIGN FOR CLASSIC SIX, THE DOUBLE-BREADED BLAZER WAS MY #1 AND I WASN'T GOING TO STOP UNTIL IT WAS A PERFECT BLEND OF EVERYTHING ON MY WISH LIST.

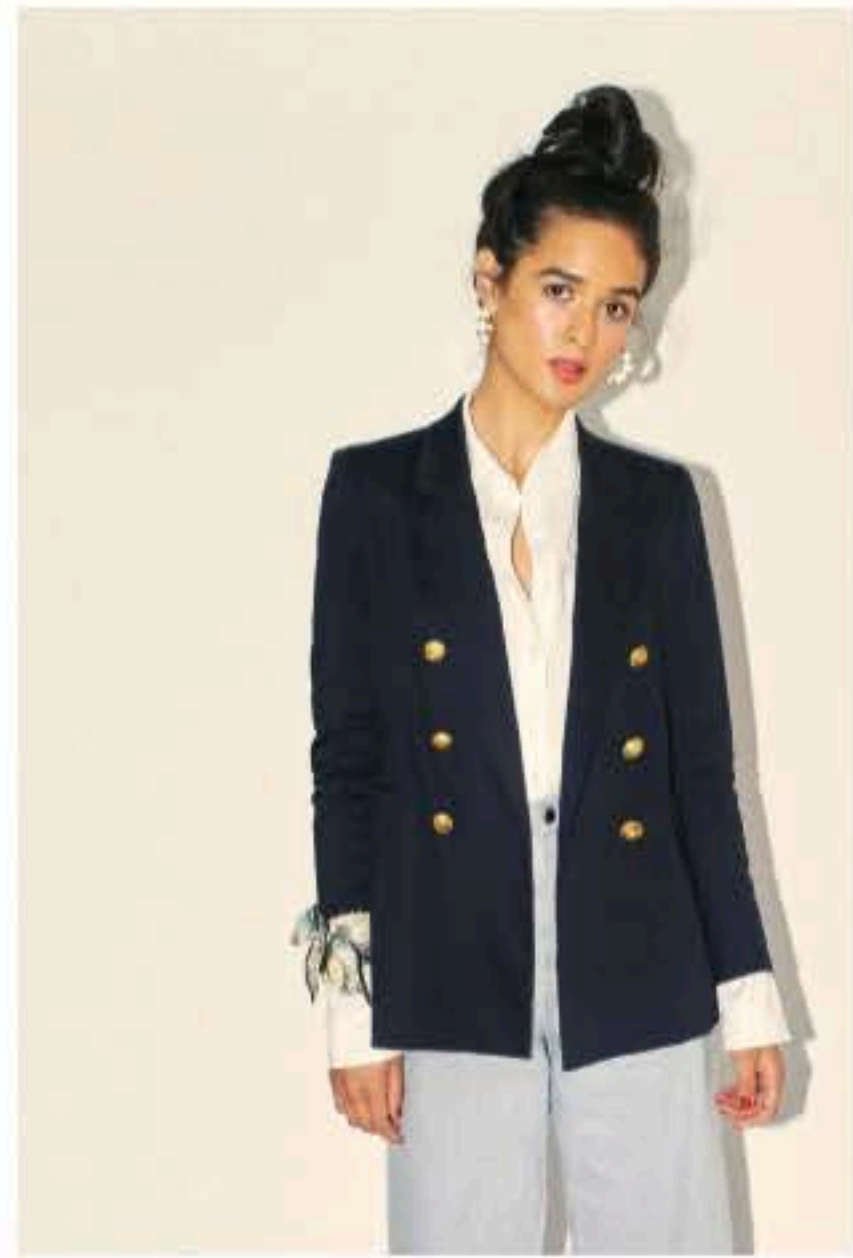




THE NAVY KATHARINE















































THE IVORY BOUCLÉ KATHARINE







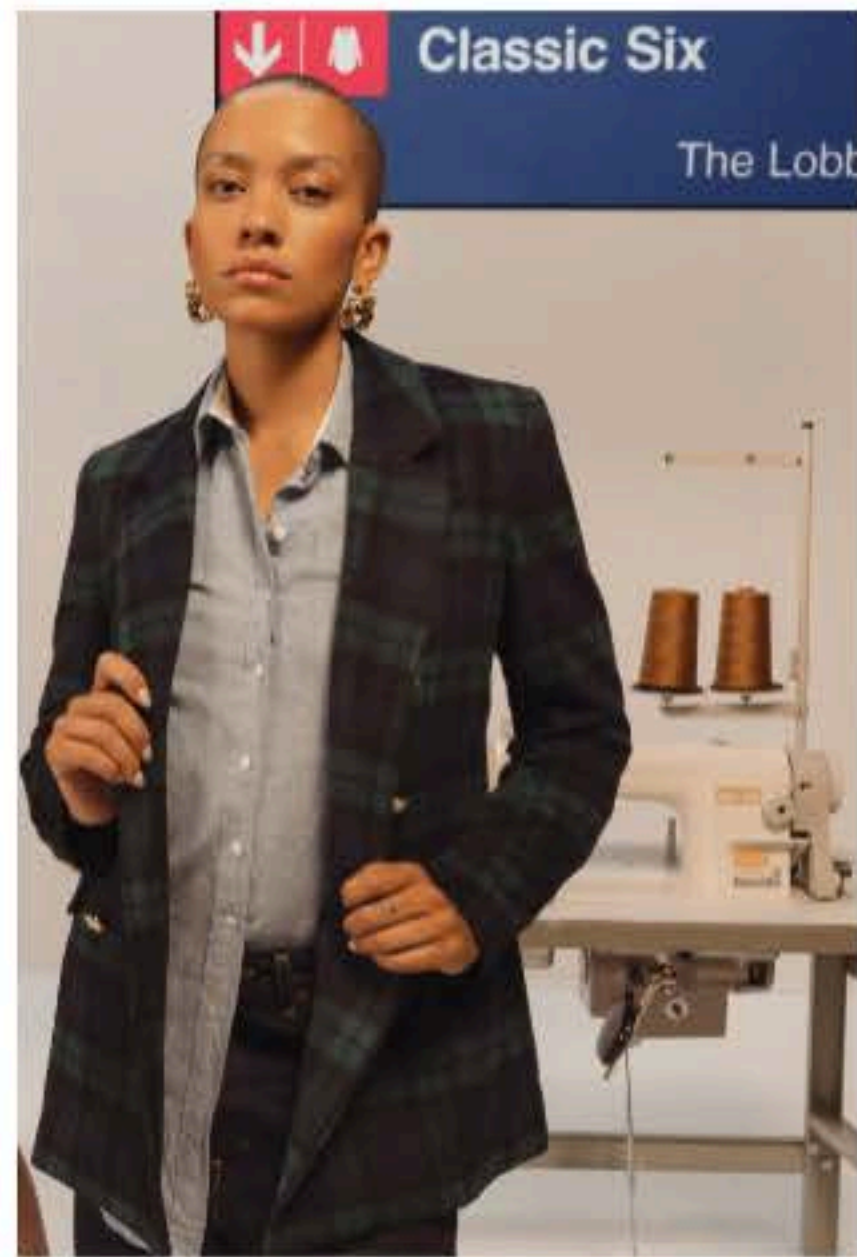






THE BLACK WATCH TARTAN KATHARINE





C L A S S I C S I X
— NEW YORK —

THE KATHARINE BLAZER BY CLASSIC SIX