



C L A S S I C S I X

NEW YORK

Fall 2020 Styling Lookbook

A highly-edited closet full of purpose.





KATHARINE

BLAZER

Double-breasted blazer in navy blue Ponte de Roma knit, with contrasting ivory piping and felt under-collar, grosgrain detailing and custom-designed antiqued-gold buttons.





D O N N A S H I R T

Crisp white cotton button-down blouse with extra-long cuff, side slits, French seams, grosgrain detailing, and uniquely positioned pearl buttons for ideal fit.





M A R I L Y N S K I R T

Sunburst accordion-pleated midi skirt in an army green polyester blend with grosgrain waistband, and bias-taped seams.





J A C K I E C O A T

Mid-calf box coat in oatmeal Ponte de Roma knit. Unlined with bias-taped seams, slash pockets, contrasting grosgrain side detailing, hidden belt loops and optional belt for additional styling.

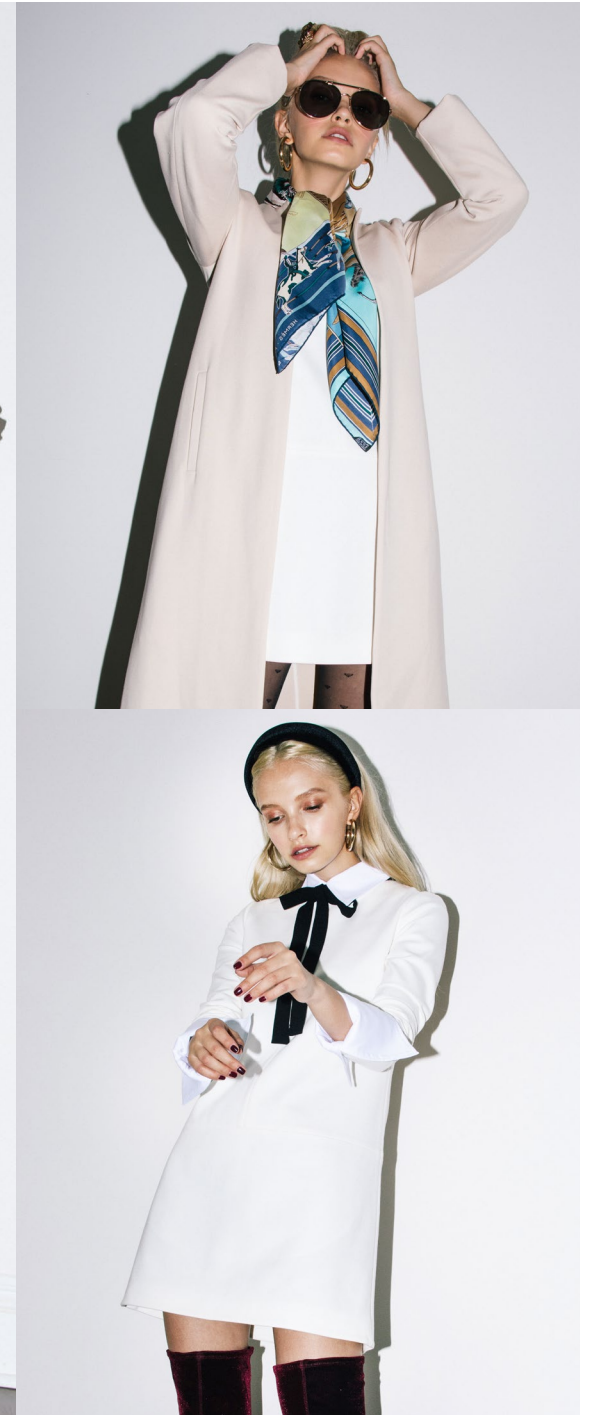




T W I G G Y

D R E S S

Long sleeve, crew-neck, mini shift dress in ivory Ponte de Roma knit. Unlined with bias-taped seams and 22" invisible back zipper for effortless dressing.





B R I G I T T E

S W E A T E R

Chunky waffle-knit, wide v-neck, oatmeal linen sweater with raglan detailing, long-ribbed hems, collar and wide cuffs.



