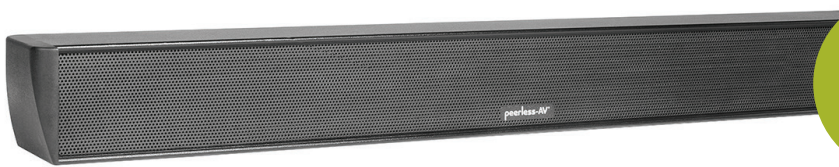




**Peerless-AV  
UltraView  
Outdoor TV  
UV651**

and it exceeds military anti-corrosion specifications (MIL-STD-883D). Its bass output is enhanced through the integrated woofer/baffle assembly and the 7in. interlaced carbon-fiber cone reduces low-frequency distortion. Midrange frequencies are disbursed over a wide area by the Dispersion Stabilizer. The highs are handled by a 1in. tri-laminate Teteron dome with fluid cooling.

Peerless-AV has outdoor sound and video covered with the **UV651 65in. UltraView Outdoor TV** and its **Xtreme Outdoor Soundbar**. The UV651 is a 65in. diagonal weather-resistant TV with full HD 1080p resolution and the ability to withstand temperature range from -24°F to 122°F. Its waterproof remote can control up to three devices and it has full-range internal speakers. Inputs include HDMI, VGA, composite, and USB (for images/text) and it features RS232 remote control and a clock/sleep timer. For bigger outdoor sound from the TV, Peerless-AV also



**Peerless-AV  
Xtreme  
Outdoor  
Soundbar**

has the IP65 rated, Bluetooth capable Xtreme Outdoor Soundbar offering 50Hz to 20kHz frequency response, built-in 180W Class D amplifier, and a 12 button IR remote control.



**Powersoft  
Deva**

The **Powersoft Deva** is a complete infotainment, entertainment, and surveillance system. With integrated Bluetooth and GPRS technologies, Deva can broadcast powerful sound using playlists and customized settings. Add to this the ability to carry emergency messages to a wide area and relay surveillance video lit up with its internal LED. Inside it has a class D amplifier to drive the 8in. speaker to a maximum SPL of 115dB. The unit is solar recharged and network connected through its internal 100 Mbit/s Ethernet port with PoE.

QSC's **AcousticDesign Series** consists of surface-mount, ceiling-mount, and pendant-mount models, all of which are sonically consistent so that any combination of these speakers can be used in a single sound environment. The ceiling-mounted units have snap-fit magnetic grilles while the surface mounted speakers use the X-Mount Surface Mounting System. The pendant mounted units can operate in 70/100V distributed speaker systems or in their 16Ω bypass

mode. The Directivity Matched Transition (DMT) Waveguide provides a smooth transition from low to high frequencies and a more uniform dispersion.

For added punch over distance outside, **RCF** offers the **HD 6045EN** long-throw, multi-cell horn speaker, a fiberglass unit with 200W RMS power handling and internal transformers for 70V/100V distributed speaker systems. IP55 rated with a power selection of 50W, 25W, 12W, and 5W, the HD 6045EN uses its four 50W drivers to produce a frequency response of 200Hz to 10kHz and 133dB maximum SPL. The system has a 60° horizontal and 50° vertical coverage pattern and it connects on ceramic terminal blocks and includes a thermal switch.

**Rockustics** has the solution for landscape speakers that blend right into the outdoors with the **XT-PowerRock**, a two-way 8Ω speaker system with a 1.3in. tweeter and 8in. cone woofer. A transformer option allows it to operate on 25V/70.7V/100V distributed systems with an 8Ω bypass. The system handles up to 250W power and stands 17.75in. high with a weight of 48lbs. Available in brown, gray, or sandstone, it has an optional security bracket (RSB1).

The **SnapAV Episode Landscape Series Satellite Speaker** is designed to blend into the outdoor surroundings. Each one has a hidden tap switch to select between 70V or low



**QSC  
Acoustic-  
Design  
Series**



**RCF  
HD6045EN**



**Rockustics  
XT-  
PowerRock**