

FURNITURE AND MOUNTS

By Bennett Liles

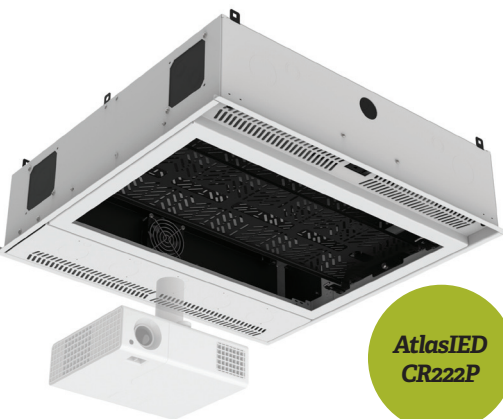
Good gear deserves a good home and the way it is mounted and arranged plays a big part in how well it will interact with operators. Upgradability is also a prime factor in choosing racks, tables and mounts. Why replace the whole setup when a new addition can just be slid into place? We've taken a good look at the tech furniture and mounts out there now and the hardware is impressive.

For very large, up to 16x9 screen video walls, **Adaptive Technologies Group** can provide the **Loc-N-Load** ground support system constructed of light weight aluminum with a telescoping two-column T-Base floor module. The system includes adjustable floor levelers and built-in X and Z axis bubble levels along with balanced anchor points and tie downs. Covered in a black powder coat finish, the unit uses aircraft pins for quick assembly and it has a rolling cart with 6in. locking casters. The weight of the fully loaded cart is less than 850lbs.

Altinex has a table top connectivity solution in their **CNK600 Cable Nook Intercon-**

nect Box. Sold as an empty unit, the box can be custom fitted with either the SP2116SC or SP2117SC interconnect plates to provide the right combination of cables and connectors for the specific job at hand. Its black brushed aluminum finish fits any room décor and the trap door lid keeps cables out of sight when not in use. The SP2116SC plate has dual 12 Amp AC sockets and 2 USB ports that deliver up to 3A of charging power while the SP2117SC plate offers dual international AC sockets and 12 ports for snap in cables.

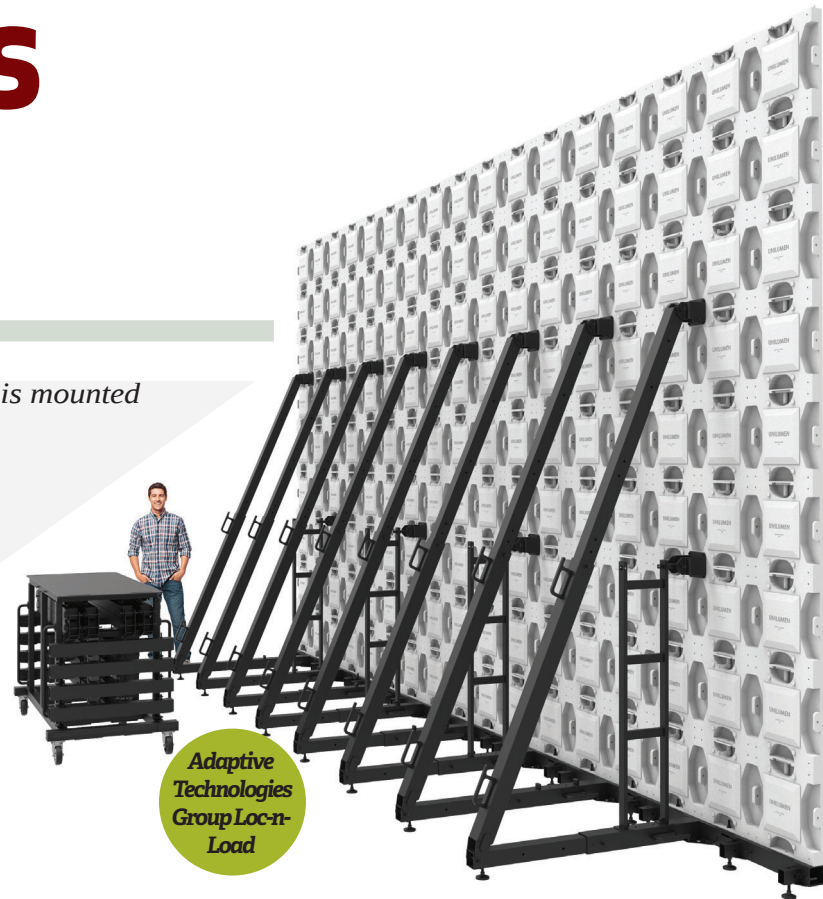
The **AtlasIED CR222P Ceiling Mount Rack** allows a 2RU rack space to be installed in a ceiling plenum and its door has an open frame allowing a ceiling tile to be mounted into the frame to blend into the room's décor. The unit fits into a standard ceiling tile grid and the door containing it is equipped with safety cables. The optional CR222RR rack rail provides two rack units and the Ambi-



AtlasIED CR222P

ILT mechanism works to let technicians have easy access to load and service the gear inside. There are also three knockouts from which to choose to fit an integrated projector mounting pole adapter so that the projector best aligns to the screen.

Audio Visual Furniture International has the versatile **SYZ90** heavy duty mobile lift



Adaptive Technologies Group Loc-n-Load



Altinex CNK600



**Audio
Visual
Furniture
International
SYZ90-XL**



**Avteq
DynamiQ
Touch Panel
Cart**



**Clearone
COLLABORATE
Media Stand**

stand for single or dual monitors with its electrical height adjustment. Its maximum weight lifting capacity of 290lbs. will accommodate most displays and its real lockable cabinet has a 3U vertical rack inside with cable channel and ventilation. There is an optional remote control available. The 23.5in. stroke travel includes a memory control switch and the unit is easy to move with its 4in. heavy duty ball bearing swivel casters. The unit ships fully assembled. It fits through standard doorways and the scratch resistant powder coat finish on its gray metal body matches most room environments.

The **DynamiQ Touch Panel Cart** from **Avteq** can quickly change any 42 to 90in. display panel from a cart configuration to a drafting table or to a table top and it can handle displays up to 300lbs. The control panel is mounted on the side and it enables two preset configurations with its electric lifting and tilting capability. The integrated screen mounting mechanism provides easy setup and its eight 5in. casters allow versatile mobility. The solid steel unit includes a six-port surge protector and cable management features.

Chief Manufacturing designed the new **Accel Active Desktop** series as a sit-to-stand workstation with three memory set height points. Two USB-A ports can charge user devices and the desktop models are available for either single or dual monitor setups. The unit provides a large 46in. wide and 22in.



**Chief
AAD46DW**

deep primary work surface and a secondary 40in. wide x 10in. deep upper surface. Accel repositions to the user's preferred standing work height with the touch of a button, electrically actuated for ultimate ergonomics. Accel was engineered to maintain rigidity at any height for a stable experience no matter what task is being performed.

The **Clearone COLLABORATE Media Stand** is a self-contained video conferencing and collaboration center. Solidly built with powder coat steel, it can mount flat panel displays of a variety of sizes from 40 to 65 inches. The height of the display can be adjusted to suit the table height and the rack mounting option offers 4RU space for rack mounted codecs, CPU's or other equipment with front access. Another option, the PTZ shelf allows a camera to be attached with height adjustment. Carefully balanced design and casters



**Crestron
FT2-700**

assist in easy movement of the entire assembly through standard doorways.

Crestron has introduced their FT2 Series FlipTops for table-top wiring connections. The **FT2-700-ELEC** features a one-touch fully retracting lid that reveals a variety of cables and surface mount connectors that are flush with the surface rather than deeply recessed. Each cable end and connector is identified with a backlit international symbol. The electrically clutched spring powered One-Touch cable retractors, Active Connector Plates, and the USB rapid charging module are powered through an internal electrical power bus. It is configurable using up to twelve FT2A series modules, organized in two rows with six module spaces per row.

For the hospitality market **Crimson AV** has the **A50HL** articulating wall mount with integrated security covers that block access



**Crimson AV
A50HL**



**Da-Lite
Multi-
Media
Lectern**



**Draper
Silent
Partner**

to monitor attachment points and prevent tampering and unauthorized removal. When retracted, the versatile mount holds a flat panel display only 2.9 inches from the wall and when it is fully extended the display is 14.67 inches out. Its 55-degree side rotation capability allows a wide viewing area and the cable management maintains a neat and clean appearance. The mount can accommodate displays from 32 to 55 inches and it can support up to 150lbs.

The **Multimedia Lectern** from **Da-Lite** allows a computer monitor to be mounted into the lectern top and it provides a pullout keyboard that can be completely hidden while not being used. The body has adjustable shelves inside and it can be augmented with an optional rack mount. Cabling can be accessed with a hinged reading surface and the lectern is available in Concord and Lexington styles along with 32 and 42-inch wide models. There are two electrical outlets for convenient power. Among the optional extras are cooling fans, custom cutouts, an Amplivox Premium Sound System, Dash Panel Snap-In Connectors, locking doors, a pull-out equipment rack, wireless mic system and gooseneck light.

Draper is introducing its new **Silent Partner**, an enclosure designed to house projectors from 5000 to 15,000 ANSI lumens and substantially reduce their noise level by using a convoluted exhaust airflow path and acoustic



**Epson LANG
Frame**

insulation foam. The projection unit is kept cool by a thermostatic fan control. The Silent Partner can mount under most ceilings and attach to a projector lift for concealment when not in use. The lockable access doors allow easy servicing while keeping the projector secure. The unit is available in 120V and 240V versions.

The **ELPMB50** and **ELPMB52** stacking and rigging frames by **LANG** are the perfect partner to Epson's Pro L-Series large venue laser projectors designed for demanding environments, including rental and staging events, lecture halls, and digital signage installations. Engineered for optimum performance, the frames protect the projectors during transportation and make them easier to handle and position during the installation process. Both models include built-in tilt, horizontal and vertical adjustments, and the ability to stack up to three projectors.



**Extron
Cable
Cubby 650
UT**

The **Extron Cable Cubby 650 UT** is a modular, under-table mounted cable access enclosure for AV connectivity, remote control, and power. Its flexible, open design facilitates easy cable access for integration into high-end furniture with a professionally-fabricated table-matching lid, provided by the installing carpenter. Cable Cubby 650 UT enclosures can be ganged together for a nearly endless selection of AV connectivity options. It includes height-adjustable connectivity brackets for mounting three AAP (Architectural Adapter Plates) or eight AV cables and three Extron Retractor Series/2 cable retraction modules. Integrated mounting brackets accommodate any table top thickness. Optional Series/2 AC and AC+USB series power modules are available for US, Europe, and other major world markets. The Cable Cubby 650 UT is housed in a black finish.



Lowell Manufacturing LWR-3523



Middle Atlantic Products L7

The **LWR-3519 Wall Rack** from **Lowell Manufacturing** is a 35RU rack with a front section that swings open to provide access to equipment and wiring. The backbox is 5.8in. deep with keyhole mounting slots and the unit has a center opening for mounting over elec-

trical pull boxes. It includes two keyed side locks and removable knockout panels on the top and bottom. The unit also features welded sides with vents, beveled front corners and knockouts for wireless antennas. The total load capacity is 300lbs. and it comes with a grounding stud along with pilot point screws with captive washers. The finish is in black wrinkle powder epoxy.

At InfoComm 2018 **Middle Atlantic Products** just unveiled the new **L7 Series** adjustable-height lectern with its curved design and motorized height adjustability. The new L7 meets ADA requirements and those of individual public speakers and faculty members while showing its impressive mix of brushed aluminum and woodgrain finish. The new lectern features a welded steel frame with modular rackmount and storage options along with integrated power, cable and thermal management. Its AVIP connection plates make quick

Power Steering

(Standard on All Models)

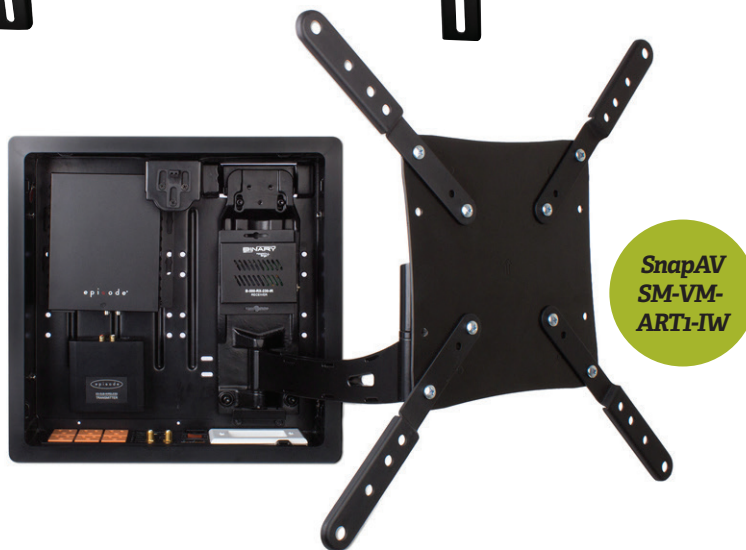
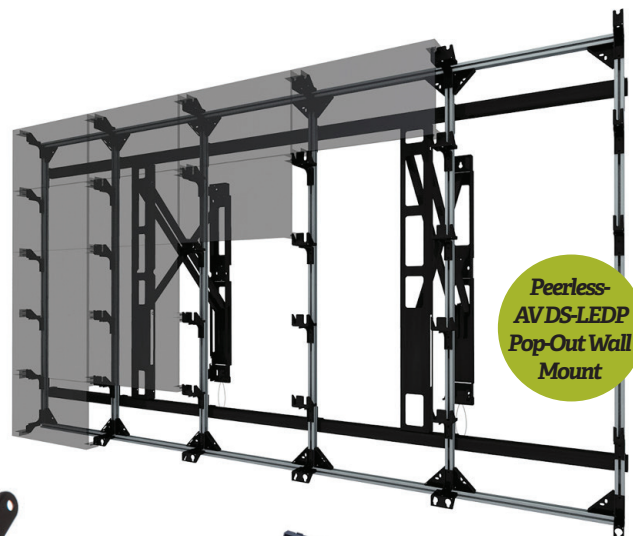
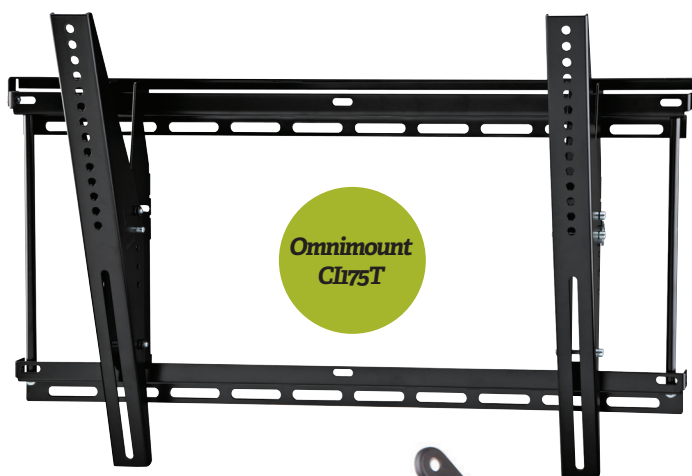
Introducing the new **ICONYX IC-Live X** series of Full Range Steered Arrays from Renkus-Heinz.

Voiced for enhanced musicality and boasting increased horsepower, the IC-Live X series includes two Full Range enclosures plus Low Frequency and Subwoofer modules. These combine to deliver affordable Power-Steerable solutions that make it easy to navigate even the largest and most challenging acoustic environments.

Designed to exceed expectations, the new ICONYX IC-Live X system provides the balanced and consistent listening experience that only Renkus-Heinz can offer.

Visit www.Renkus-Heinz.com now to learn more.





and easy hookups possible and its 61x31in. workspace allows space for personal devices, microphones and power connections.

The **Omnimount CI175T Tilt TV Wall Mount** is designed for residential, commercial or digital signage applications and its weight capacity is up to 175lbs. The unit's Lift n' Lock allows easy 3-step installation for 43 to 90in. displays. Sliding along the wall plate for left/right positioning, the vertical rails fit VESA and non-VESA displays. The open frame provides access to wiring and connectors and a locking bar secures the display to the mount. The mounted display can tilt up to 15 degrees and the mechanism mounts on 16 or 24in. double-stud or solid wall.

Peerless-AV has a complete and customized solution for large video wall mounting with the **Pop-Out LED Video Wall Mount (DS-LEDP)**. This mounting device can be designed and built to exact video wall specifications.

The pop-out mechanism extends the mount outward from the wall surface to allow rear access for service. The frame attaches to a wall strut to provide lateral movement during installation. Display-specific adapter plates are used to support a variety of current display models and there is integrated cable management.

The **LMV Press and Release Pop Out Mount** from **Premier Mounts** is designed for 5-second access to the rear of a video wall using a depression clasp that springs open with a light push on the bezel of the display. The LMV then extends out 8in. and its service position kickstand provides a 16-degree open access angle. There are X, Y, and Z adjustment knobs for fine adjustment of the mount, once installed. The spring-loaded locking mechanism provides a quick release from the locked position and there is a metal display model-specific spacer included with each purchase.

SnapAV offers a solution for in-wall extendable mounting that includes cable management with knockouts and it can fit in modular fashion to a variety of the company's additional equipment. The **Strong VersaMount Single-Arm In-Wall Articulating Mount** has 14 inches of display extension capability and when combined with Binary HDMI extenders, Episode Mini Amps and sub kits it includes everything needed for the display, video signal and power. The system includes TV mounting plates to accommodate VESA patterns from 100x100 to 400x400 and it is compatible with the Compact WattBox for powering everything.

The **Spectrum Industries Optio Collaboration Table** has a number of features that make it customizable to suit any room. The seamless high pressure laminate one-piece work surface is supported with fixed length legs available with matching insert panels. An



Video Mount Products EREN-42E1K



Spectrum Furniture Optio Collaboration Table

optional electric lift can allow either sitting or standing height and the tapered work surface allows a clear view of the display for all participants. There are locking doors on the AV Technology Cord Channel and optional casters enable users to move the unit easily.

The EREN Series racks from **Video Mount Products** have welded steel construction and they are shipped fully assembled. The **EREN-42E1K** is the 42RU product in the line and like the other models, it has numbered rack spaces, a tempered glass front door, double-hinged steel rear doors and adjustable front and rear rails. The EREN Series also features removable locking side panels, casters and leveling feet, pre-installed cooling fans and reversible hinged front and rear doors. The EREN-42E1k has a load capacity of 1300lbs. and is covered in a black powder coat finish.

TASCAM CD-400U

Delivering superior audio performance from CD, USB memory stick, Bluetooth, SD card and featuring an AM/FM receiver, the TASCAM CD-400U is the ideal audio source for virtually any commercial installation.



Only TASCAM delivers the depth of product, technical innovation, and legendary reliability you need to make every project a success and maintain your hard-earned reputation.

Whether you're looking for a professional quality CD/Digital Media player, a 2-channel digital recorder with automated FTP capabilities, or a 1U 64-channel digital recorder, TASCAM has the right product with the right features at the right price.



Ask us about our Market Maker Program and 2 Year Warranty
TASCAMsales@TASCAM.com