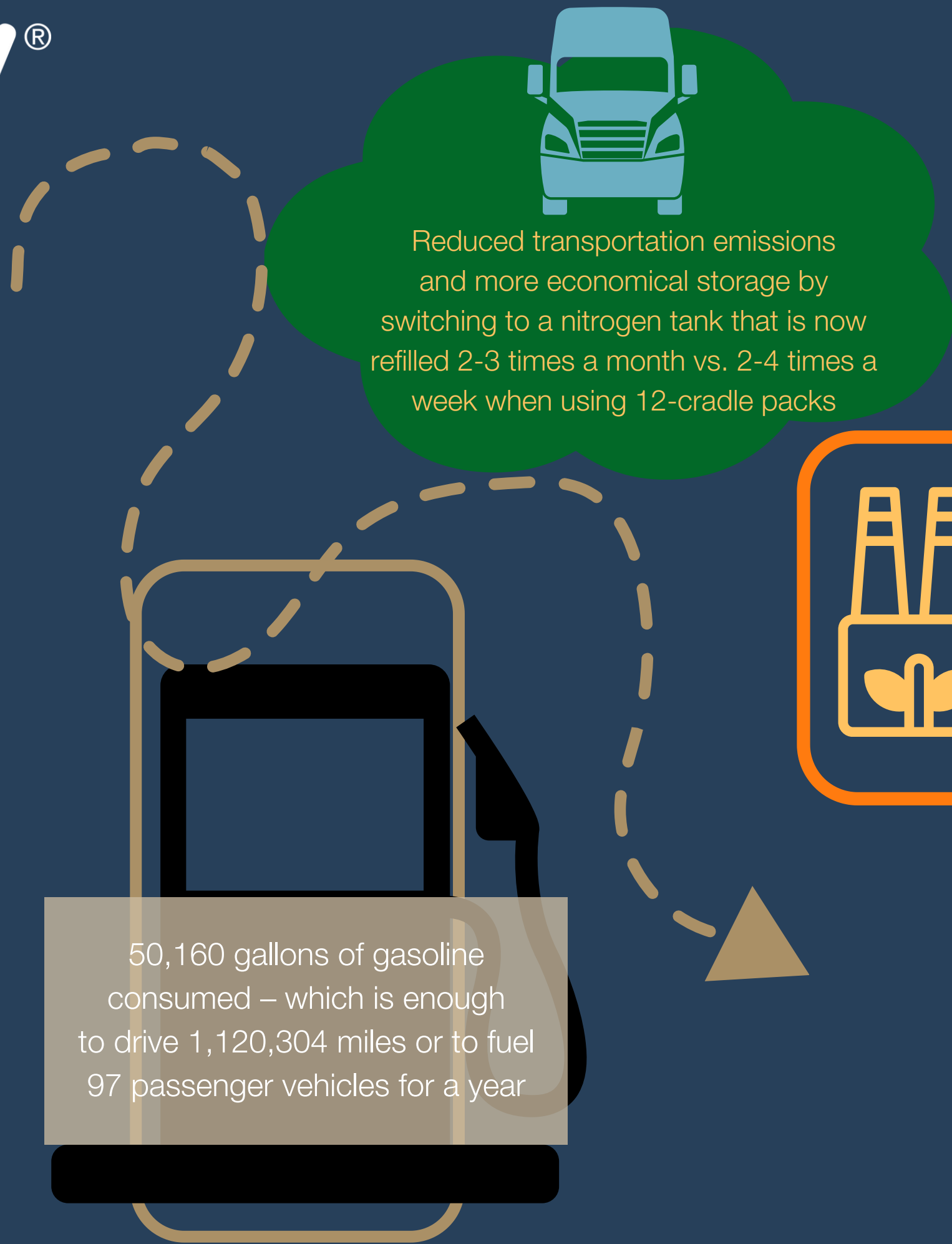



629,010 kW-hrs
of electricity –
which is enough to power
54 homes for a year



1562 Diverted

Diverted 1,562 tons of waste
from landfills which equates to 90%
of generated waste being recycled.
For every metric ton recycled, we
save 2.87 metric tons of CO2



Reduced electricity usage
by 38% (891 KWh) due to
investing in state-of-the art
automated, robust energy
efficient manufacturing
equipment

