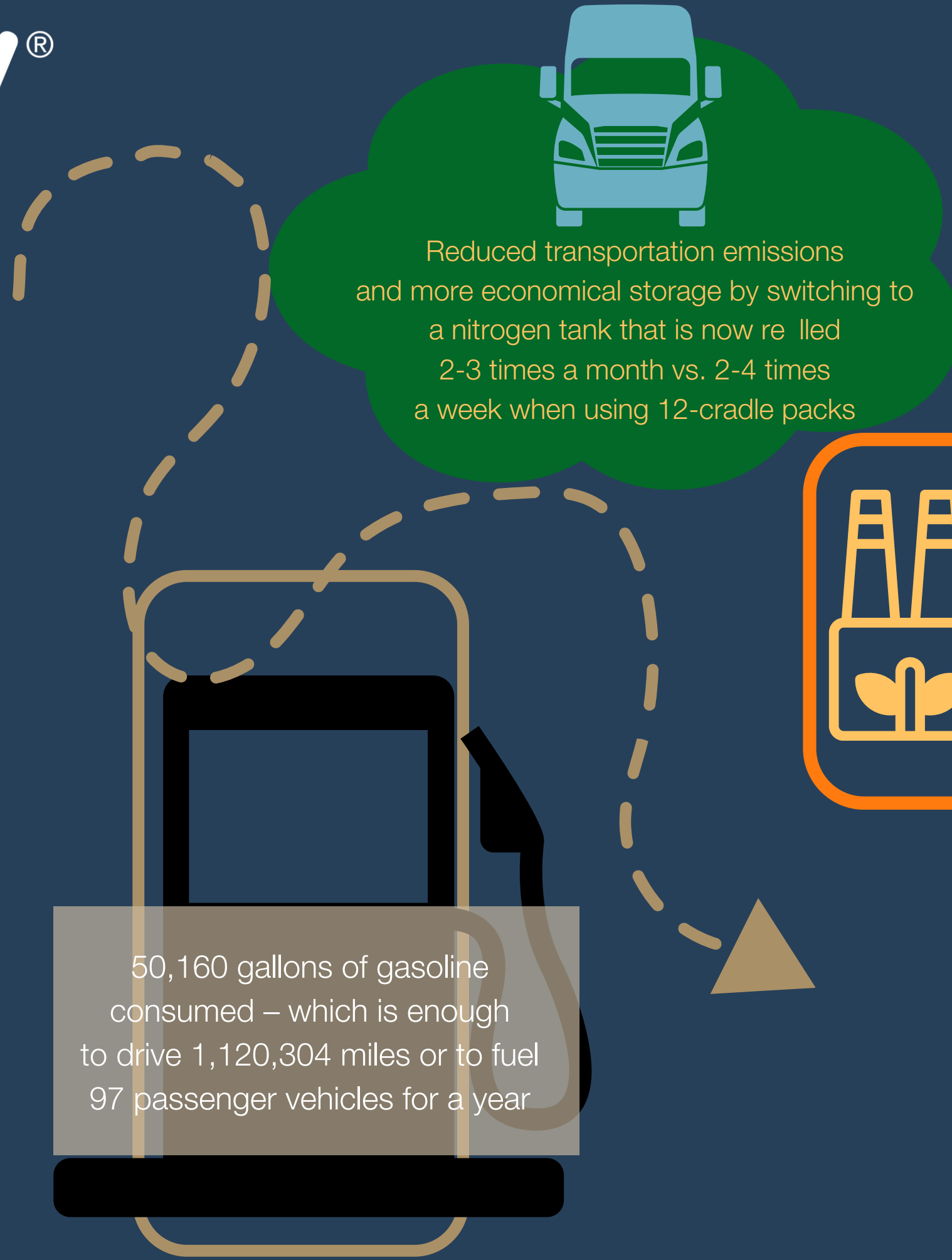



629,010 kW-hrs of electricity – which is enough to power 54 homes for a year



1562 Diverted

Diverted 1,562 tons of waste from landfills which equates to 90% of generated waste being recycled. For every metric Ton recycled, we save 2.87 metric tons of CO2



Reduced electricity usage by 38% (891 KWh) due to investing in state-of-the art automated, robust energy efficient Manufacturing equipment

Diverted 7.3 tons of E-waste from landfills and recycled in an environmentally ethical way