



InfoComm 2016 Digital Signage Best of Show Award Winners

At Look at the Winning New Products from the Floor at InfoComm

BY DAVID KEENE



Photo by John Staley

NewBay Media announced the Winners of the InfoComm Digital Signage Best of Show Awards on the last day of the InfoComm show in Las Vegas. The Best of Show Awards recognize new and outstanding products exhibited at InfoComm. The Digital Signage winners were selected by a panel of AV professionals on site at InfoComm in Las Vegas.

The winners, in the Digital Signage category:

- **Leyard and Planar**

Leyard TWA Series LED Video Wall

- **LG Electronics**

Dual-View Flat OLED Display

- **SunBriteTV**

SB-8418UHD 84-inch 4K UHD Outdoor Television

- **AV Stumpfl**

Wings Engine Raw 8K

- **LG Electronics**

Curved-View Tiling OLED Display



• **Barco**

R-Series Digital Media Canvas (LED)

• **Epson America, Inc.**

Epson Pro L25000U Laser 3LCD Projector with 4K Enhancement and 25,000 -Lumen Output

• **Hall Research**

HHD264 - The Dynamic Virtual Matrix Switch

• **Calibre C6844**

Calibre HQView600 Series Presentation Scaler-Switchers, with Added Streaming Input

• **Peerless-AV**

Peerless-AV Universal Modular LED Wall Mounting System

• **Matrox Graphics Inc.**

Matrox C900 Multi-Display Graphics Card

• **Sharp Electronics Corporation**

Sharp's Next-Generation Professional LCD Monitors

• **Casio**

Casio's LampFree XJ-F210WN Advanced Series Projector, 3500 ANSI lumens, WXGA Resolution

• **Stewart Filmscreen**

Torrent ElectriScreen

• **NEC Display Solutions**

MultiSync X554HB Display Large-Screen Monitor for High Ambient Light or Direct Sunlight

• **Premier Mounts**

Triple Outdoor Stand for Samsung OH55D Displays

• **Samsung Electronics America**

Samsung UH55F-E 1.6mm Bezel-to-Bezel LCD Video Wall



AV Stumpfl has an 8K version of Wings Engine Raw. The upgraded media server now offers four streams of full 4K uncompressed content at 60 Hz plus media overlays, text generation, and show control on top. It is designed for media-based installations that require high-resolution content such as themed attractions, cinematic presentation, theaters, live events, or even planetariums. Users can utilize a single Wings Engine Raw server to manage content over a virtually unlimited amount of LED screens or to drive a 4x4K projection system with soft edge blending, mapping, and geometry correction. Alternatively, Wings Engine Raw can be used to blend or overlay multiple parallel HD, 4K, 5K, or even 6K streams in real-time. Show start and control is frame accurate and without any delay. Wings Engine Raw now includes additional hardware upgrades such as four Display Port 1.2 video interfaces, professional multi-channel audio options, and various input options such as DVI, HDMI 2.0, and 3G-SDI.



This year, LG Electronics USA announced the Dual-Sided Curved OLED display as part of the industry's first-ever line of digital signage displays based on revolutionary OLED technology, ushering in a new era of digital signage. LG's unique Dual-View Curved Tiling OLED display offers a curved design using slim tiles to form customizable displays by linking two, three, or four tiles together. The 65-inch concave and convex portrait displays boast a paper-thin and eye-catching dual-sided view to offer customers a dynamic viewing experience with the ability to play video on both sides of the display at once, while providing retailers a way to utilize their space efficiently.

Additionally, each screen tile boasts a 4K Ultra HD (3840 x 2160) resolution, showcasing a bigger, bolder and more lifelike viewing experience to capture consumer attention effortlessly. High-performance system-on-a-chip (SoC) coupled with a 128 GB internal memory capacity enable the display to deliver perfect UHD-synched playback without the need for PCs or a media player, further increasing retailers' flexibility in installation and presentation.



The Samsung UH55F-E 1.6mm bezel-to-bezel LCD video wall is Samsung's slimmest LCD, measuring only 1.6mm bezel-to-bezel. The Samsung UH55F-E SMART Signage video wall display is optimized for a range of indoor retail and public-viewing applications. It combines advanced color management capabilities with the fine pixel pitch and resolution of large-format signage. Each video wall display undergoes factory calibration and tuning, ensuring bright and accurate color. UHF-E displays also accommodate UHD content up to a 5x5 configuration enabling businesses greater flexibility and creativity.



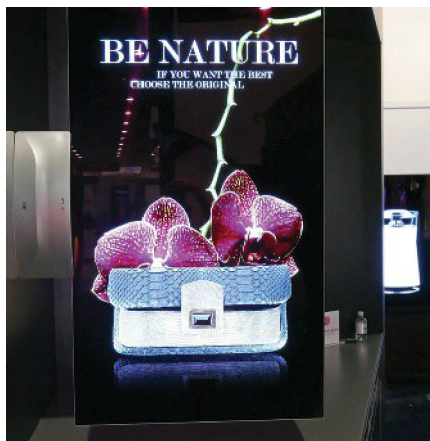
The Hall Research HHD264 dynamic virtual matrix switch is part of their family of economical HDMI-over-LAN senders and receivers that provide unparalleled power and ease to distribute one or more HDMI sources to multiple displays on any LAN, according to the company. Up to 64 independent senders can be simultaneously connected to the network and up to 256 receivers can be accommodated. The visually lossless crisp Full-HD (1080p/60) video is transmitted with a user-definable bit rate. Full-HD uses 15 Mbps where as HD (1080i or 720p) uses 12 Mbps. However, if the content is mostly static, users can encode with lower data rates to save bandwidth and still have a perfect image.



Epson Pro L25000U Laser 3LCD Projector with 4K Enhancement offers 25,000 lumens of color brightness and 25,000 lumens of white brightness. As part of the new Pro L-Series laser projector line, the Pro L25000U integrates a sealed optical engine with laser-light source and an inorganic phosphor wheel in combination with inorganic LCD panels for up to 20,000 hours of virtually maintenance-free operation, including 24/7 use for applications that require continuous projection. Ideal for rental and staging, as well as permanent large venue installations, the Pro L25000U features a wide array of future-proof 4K-ready powered lenses with lens shift and lens memory.



The Leyard TWA Series is a line of fine pitch LED video walls architected to support the highest pixel density and delivers benefits unit to its "flat panel" design, including a 16:9 form factor that is optimized for the most popular high-resolution standards, ease of installation and service, and flatness and uniformity. With a slim 54-inch cabinet and the finest pixel pitches, Leyard TWS Series LED video walls deliver the pixel density and form-factor to match LCD and rear projection video walls, but with a truly seamless video wall configuration of any size.



LG, Dual-View Flat OLED Display. LG Electronics USA debuted the Dual-View Flat OLED display as part of the industry's first-ever line of commercial OLED displays. The Dual-View Flat OLED is a unique paper-thin, dual-sided display that ushers in a new premium standard to the digital signage market, featuring the unrivaled picture quality that customers recognize from LG's state-of-the-art consumer OLED televisions, now available to businesses seeking high-end display solutions that offer an unparalleled consumer experience.



SunBriteTV's 84-inch 4K UHD outdoor television is available now. The SB-8418UHD is the outdoor television manufacturer's largest screen size ever offered and their first 4K model. The 84-inch is the first new product from SunBriteTV since being acquired by SnapAV in late 2015 and includes integrator-friendly features like built-in HDBaseT along with HDMI 2.0 and HDCP 2.2 capabilities. To allow for optimal outdoor operation, the media bay powers many media players without the need for external cords. The television features weather-proofing technology that protects from rain, snow, salt corrosion, dust, and insects.