



InfoComm Digital Signage Best of Show Award Winners

Winners from the Floor at InfoComm 2015

BY DAVID KEENE



NewBay Media announced the winners of the InfoComm Digital Signage Best of Show Awards on the last day of the InfoComm show in Orlando, FL. The Best of Show Awards recognizes new and outstanding products exhibited at InfoComm. The Digital Signage winners were selected by a panel of AV professionals on site at InfoComm.

The InfoComm Digital Signage Best of Show winners are:

- Samsung Smart LED Signage
- Visix Mobile Wayfinding App with Beacons and Geofencing
- Stewart Filmscreen FIDELEDY Vision
- LG VH7B Direct Backlit LED Display with Thin Bezel
- Planar DirectLight LED Video Wall System
- Christie Velvet LED – Apex Series
- Premier Mounts Symmetry Series
- BenQ ST550K Digital Signage Panel
- Canon REALiS WUX400ST Pro AV Compact Installation LCOS Projector
- Hall Research UHBX-R-XT HDBaseT receiver
- Chief LWM4X1U Fusion Menu Board Wall Mount
- Peerless Line of Indoor Kiosk Enclosures
- NanoLumens NanoSlim Engage 1.8MM

Here are details on some of the winners:

Planar DirectLight LED Video Wall

The Planar DirectLight LED Video Wall System is a family of seamless, ultra-fine pitch direct-view LED video walls that provide an excellent visual experience and 24x7 reliability tailored for indoor environments. Planar DirectLight LED video walls incorporate design principles gained from Planar's decades of successful video wall installations and are ideal for the most demanding control room and digital signage applications, providing a uniform and seamless canvas of nearly any size or shape.





Digital Signage
WINNER
BEST of SHOW
InfoComm 2015



Peerless Kiosk Enclosures

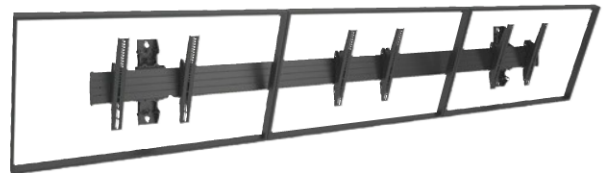
Offering elegance unprecedented in the large format kiosk sector, Peerless-AV's new line of totem multi-media kiosk enclosures incorporate a robust feature set, while maintaining a modern, curvaceous, and slim aesthetic look with lean frames and a small footprint. From wayfinding to entertainment, the new line of totem kiosks "gets it right" in any indoor application, housing 40- to 80-inch displays in portrait orientation.

To meet the needs of any digital signage application, the easy-to-install and affordable line of totem enclosures offer customization through RAL colors or client logos with vinyl or digital printing. The enclosures also feature stereo speakers and amplifiers, Wi-Fi, NFC, and proximity sensors, ambient lighting, and tempered glass or Lexan surfaces with anti-glare treatment.

Dependent on the needs of the user, photo and video equipment can be incorporated to allow for interactivity. The kiosk enclosures are available in multiple configurations, too, such as using two displays, one on each side. Pushing the boundaries of form, function, and ease of integration, the sleek multi-media

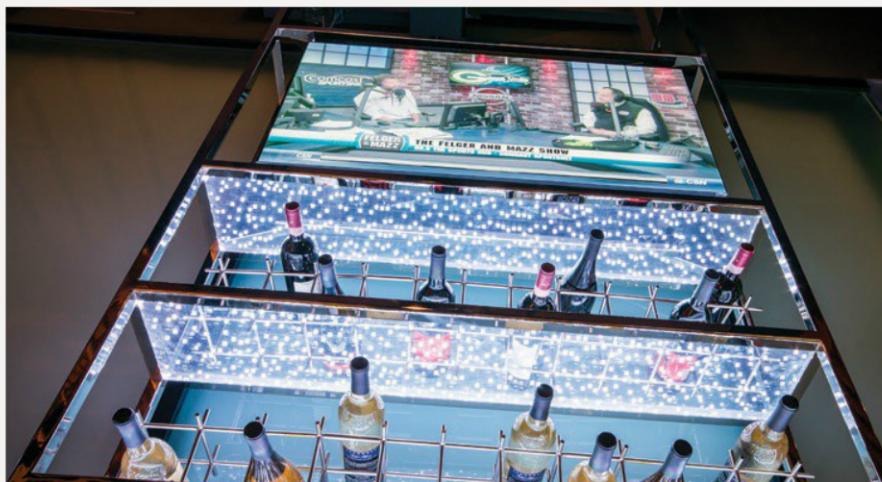
kiosk enclosures can be customized through Peerless-AV's KioskBuilder and Kiosk Partner Program, allowing integrators to streamline the installation process by eliminating the need to source components from multiple vendors.

In addition to the new floor-standing portrait kiosk enclosures, the new line will continue to grow, incorporating landscape, in-wall, and on-wall models.



Chief's Fusion Menu Board Wall Mounts

Chief's new Fusion Menu Board Wall Mounts join a robust line of ceiling-mounted solutions to execute any digital menu board application. The new mounts offer perfect display positioning and flexible adjustments. The single horizontal extrusion with depth adjustment aligns the screens quickly — even on irregular mounting surfaces — and allows easy access behind the displays for servicing. Control-Zone Leveling provides micro-height adjustment. Centris tilt allows easy adjustment between +5 and -20 degrees. Other installer-inspired features include tool-free screen engagement and optional padlock security. The mounts are available in 3x1 and 2x1 configurations with portrait and landscape options and 4x1 and 5x1 configurations in landscape orientation. They can be combined to easily create longer menu boards. The mounts accommodate 40- to 55-inch screens and can use the same accessories that work across the ceiling and freestanding Fusion lines.



NanoSlim Engage is a front installable, front serviceable 1.8mm LED display. The high-resolution, large-scale visualization solution is backed by a corner-to-corner six-year warranty and is designed to serve for boardrooms, control centers, and other areas where clear and up-close viewing is required.



Imagine a simple solution to display content that gets the attention of your audiences. Well, you don't have to imagine it anymore, Peerless-AV has created it. We are everywhere innovative, flexible and high-quality digital content is needed, pushing the boundaries of what anyone thought possible.

If you haven't partnered with us for anything but mounts, come see what your competition has been using. You won't be disappointed, we promise.

peerless-AV[®]



Sleek Design

Offering elegance unprecedented in the large format kiosk sector, these multi-media kiosk enclosures incorporate a robust feature set while maintaining a modern, curvaceous, and slim aesthetic look with lean frames and a small footprint.

Ease of Serviceability

Unique combination locks means not having to worry about lost keys while still maintaining the security you need. Plus, segmented rear doors allow for rapid installation and placement of displays.

Worry-Free Integration

Easily incorporate stereo speakers, NFC sensors, photo/video equipment and more. Plus, Peerless-AV's KioskBuilder™ and Kiosk Partner Program allows you to source components from a single vendor.

Available Q4 2015