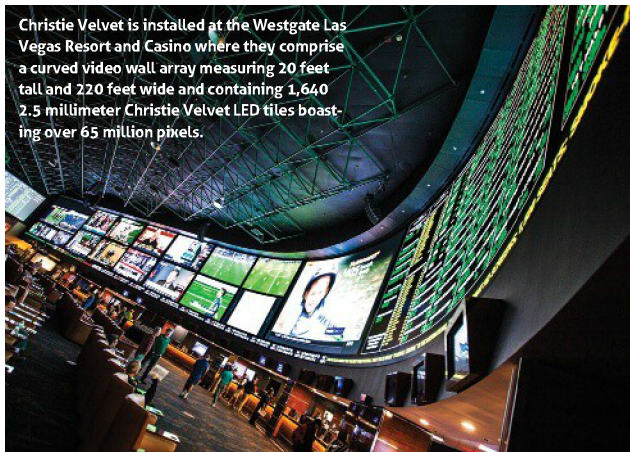


NEW TECHNOLOGY SHOWCASE

A look at some of the latest display innovations from our sponsors



Christie Velvet is installed at the Westgate Las Vegas Resort and Casino where they comprise a curved video wall array measuring 20 feet tall and 220 feet wide and containing 1,640 2.5 millimeter Christie Velvet LED tiles boasting over 65 million pixels.

CHRISTIE VELVET LED

Christie Velvet LED tiles are installed in numerous high-profile locations including the 88,000 square-foot Annenberg School for Communication and Journalism at the University of Southern California (USC). Standing three-stories tall, the LED video wall 'floats' in the middle of the forum and connects the student population to the digital sphere, showcasing student and faculty work, displaying breaking news, and streaming social media.

USC said that getting a narrow pixel pitch at an affordable price with a domestic provider (Christie) as a high priority for the school. A second factor was having the provider not only be reliable, but to back it up with a solid maintenance and warranty program.

The ability of Christie Velvet to display bright, colorful content despite the large amount of natural ambient light found in the space also made it the right choice for the installation. USC chose the Christie Spyder X20, the world's most powerful and versatile video processor, to power this LED display wall. To date, the forum has hosted heads-of-state and prominent global political figures, politically active celebrities and prominent journalists, along with leading technologists and researchers, providing USC students the opportunity to engage with them using this interactive and collaborative platform.

Christie Velvet is also installed at the Westgate Las Vegas Resort and Casino where they comprise a curved video wall array measuring 20 feet tall and 220 feet wide and containing 1,640 2.5 millimeter Christie Velvet LED tiles boasting over 65 million pixels. The video wall spans the length of the sports book, creating a stadium-like experience unlike any other where every seat in the newly renovated Westgate SuperBook is a 'front-row' experience.

An industry game-changer, the Westgate Las Vegas Resort and Casino installation coined a new phrase – SuperBook – to capture the size and scope of the installation.

Both the USC-Annenberg Hall installation and the Westgate installations use the Christie Spyder X20 video processor to manage and control the content. The video wall provides speakers and event producers almost limitless options for dynamic visual content, digital content, digital collaboration and streaming social media.

At Westgate, seven Spyder X20 processors deliver a combination of single and multi-screen presentations so sports fans can follow the action live and keep up to date on numerous events happening simultaneously.

Christie Velvet LED is designed for 24/7 high-impact visuals and is perfect for corporate lobbies, museums, large-scale experiences, indoor advertising and high-end retail as well as control room applications. With a wide range of pixel pitches, Christie Velvet includes two series – Apex and Merit – and is designed for uniformity, using only the highest quality components. Each component is system level certified and tested to meet the most stringent safety and environmental requirements.

Offering the highest image quality and top-of-the-line performance, Apex Series delivers increased flexibility with a slim design, 100 percent front-serviceability, 16 x 9 aspect ratio, native HD and UHD resolutions, micro adjustments, and much more. Featuring the most efficient use of power, precision output control, advanced monitoring capability and design flexibility with clear, detailed imagery, Apex Series delivers what critical viewing environments need.

LG BRINGS THE AMAZING BENEFITS OF OLED TO COMMERCIAL DISPLAYS



Introduced at the 2016 Digital Signage Expo, LG's revolutionary new OLED commercial displays incorporate the most advanced display technologies, and yield an unprecedented combination of picture quality and installation flexibility. OLED (Organic Light Emitting Diode) displays eliminate the need for a separate

backlight, as each pixel emits its own light, resulting in a more exact control of brightness down to the pixel level. Available in Full-HD (1080p) or Ultra-HD (4k) resolution, OLED displays yield accurate, intense color and perfect black reproduction, with infinite contrast.



REIGN SUPREME

The King of All Video Wall Mounts



At Your Service

We believe in treating our customers like royalty, and royalty shouldn't have to waste time servicing video walls. That's why the new SmartMount[®] Supreme Video Wall Mount has dual options for extending the displays for service. Whether recessed or on wall, we've got you covered. Plus, it features a hassle-free cable management system that allows the cables to easily glide with the display's movement. You will be splendidly surprised at the new capabilities designed with you in mind.

Learn more at peerless-av.com

© 2016 Peerless Industries, Inc. All rights reserved.

peerless-AV[®]

SMARTMOUNT[®]
SUPREME

They also provide superior viewing angles, up to an ultra-wide 178 degrees, a big advantage in larger environments. Fast action scenes are crisp, clear, and free from blur, thanks to very fast response times.

OLED displays are exciting, and their groundbreaking versatility is quickly changing the ways digital signage can be employed, providing absolute freedom from having to mount them on a wall. Their sleek, pencil-thin design allows them to be customized into curved, concave or convex forms, to create a display array that can also serve as a primary architectural design element within the space itself.

Dual View OLED displays open up new opportunities in placement. The images can be the same (mirrored), or they can be swapped, on either side of the display. And their “off-the-wall” capability allows them to be mounted on floor stands, or from ceilings and walls. Dual View OLED displays can also be custom curved and tiled to create compelling partitions that can move viewers through an area while they enjoy a breathtaking multimedia experience.

LG’s OLED displays offer seamless integration into any environment, becoming an eye-catching focal point that draws viewers, gets the message across and invites interaction like never before.

OLED displays are perfect for Premium or Specialty Retailers, such as jewelry stores and fashion boutiques, looking to set themselves apart from the competition by creating exciting visual presentations that literally bring their products, services, and brand to life. Since the displays blend harmoniously with the showroom and the merchandise, customers can completely immerse themselves in an experience like no other, especially key when competing against online retailers. Store designers will begin to incorporate OLED displays into retail spaces in a variety of ways, including curved walls that delineate key areas, or even use them as easels, where they provide stunning dynamic imagery and, when paired with a camera, switch to become a mirror. All of this adds up to a store that customers will want to shop in often, and talk about to their friends, generating strong loyalty, more sales and increased profits.

Transportation Ports, such as airports or cruise ship terminals, can use Dual View OLED displays to deliver important messages to travelers coming or going. They can also be employed in waiting areas, entertaining those waiting to begin their journey. Curved OLED displays can be hung from the ceiling, completely changing the look and feel of a crowded terminal. As people move, they can feel more relaxed, as beautiful scenes are displayed overhead.

The benefits and versatility of OLED displays add a “wow factor” to any environment, where breathtaking picture quality and complete installation flexibility are required. If you’re considering an OLED display, make sure that it’s a true OLED screen. A world leader in displays, LG’s OLED displays were awarded “Best in Show” for digital signage at InfoComm 2016.

PEERLESS-AV UNIVERSAL SCALABLE LED WALL MOUNTING SYSTEM

Peerless-AV has announced the industry’s first Universal Scalable LED Wall Mounting System. Featuring a quick and easy pop-out mechanism that can be adapted to support various brands and display sizes, Peerless-AV’s LED Wall Mounting System also offers a scalable design enabling custom installs for specific configurations.



The universal nature of the LED Wall Mounting System gives installers infinite choices as they look to specify more full-color, high brightness, big viewing angle LED displays in their projects.

“LED is becoming an integral part of the AV industry and with our commitment to being at the forefront of audiovisual technology, we’re excited to unveil our new LED Mounting System,” said John Potts, President, Peerless-AV. “To develop the best solution available, we’ve worked closely with customers and LED experts to ensure versatility and compatibility for individual application scenarios.”

Key features of the Universal LED Wall Mounting System include a clean and aesthetically pleasing installation based on a slim, space-saving design. The pop-out mechanism extends the mount 30 inches from the wall, providing ample space for a technician to service and maintain the LED displays. Its universal design can be easily configured to support most LED brands and sizes by simply changing out display-specific adapter plates.

The mounting system’s easy hang wall plate enables a fast, trouble-free installation and handles on either side of the mount provide easy mount articulation without the risk of damage to the LED display. In addition, integrated cable management allows for a clean finish.

Peerless-AV’s Universal LED Wall Mounting System is now available for custom order through Peerless-AV’s network of distributors and resellers.



LEYARD TWA SERIES FINE PITCH LED VIDEO WALLS

Leyard, and Planar, a Leyard company, have introduced Leyard TWA Series fine pitch LED video walls, a family of unique flat panel LED video wall displays featuring low power consumption and outstanding image quality. Available now in 1.2 and later this



REIGN SUPREME

The King of All Video Wall Mounts



Endless Possibilities

Dreaming of creating a video wall with no limitations? The SmartMount® Supreme Video Wall Mount is here to make your dream a reality. With endless possibilities including both landscape and portrait orientation, you will be royally stunned at the new capabilities designed with you in mind.

Learn more at peerless-av.com

© 2016 Peerless Industries, Inc. All rights reserved.

peerless-AV®

SMARTMOUNT®
SUPREME

year in 1.8 millimeter pixel pitches, the Leyard TWA Series builds on Leyard's leadership as the world's largest manufacturer of fine pitch LED video walls - delivering the pixel density and form-factor similar to LCD and rear projection video walls, but with a truly seamless image that can be configured to nearly any size. The unique 54-inch flat panel design offers superior image quality and 24x7 mission-critical reliability, along with one of the industry's most energy-efficient LED video wall designs.

Leyard and Planar showcased the Leyard TWA Series at InfoComm 2016 in a massive 8K installation of 64 individual Leyard TWA Series 1.2 millimeter pixel pitch displays.

Unrivaled Image Quality and Reliability: The Leyard TWA Series offers a unique, energy-efficient design, unsurpassed image quality and 24x7 reliability, making it ideal for both control room and digital signage applications.

Unique design: The Leyard TWA Series is a unique flat panel LED video wall display offering a slim 54-inch cabinet and the finest pixel pitches available on the market today. The result is a pixel density and form-factor to rival LCD and rear projection video walls, but with a truly seamless solution that can be configured to nearly any size.

Common form factor: The Leyard TWA Series is designed with a 16:9 aspect ratio compatible with most displays, making content development and video wall processing easier right out-of-the-box.

Energy-efficient: Leyard TWA Series LED video walls use an average 35 percent less power than conventional LED video wall displays, making it among the industry's most energy-efficient LED video wall solution.

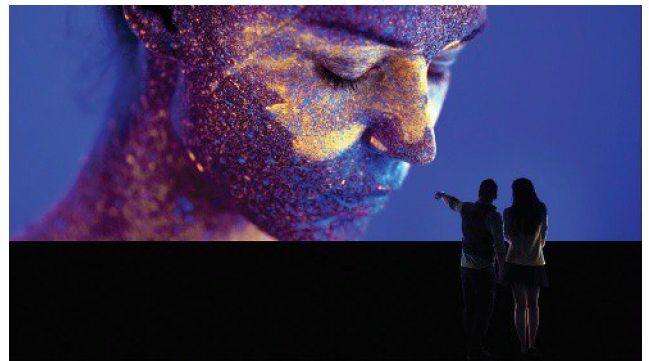
Advanced image quality: The Leyard TWA Series delivers a crisp, high contrast image that uses the highest quality black LEDs, black solder mask and MicroGrid Shader to achieve the deepest level of blacks. It also provides image improvements over prior products, including wider viewing angles that deliver excellent off-axis uniformity and advanced calibration that bestows maximum full color and brightness uniformity across even the largest video walls with no visible seams.

24x7 reliability: The Leyard TWA Series is designed for high reliability, long life and ease of service. It is built to operate around the clock and is available with redundant power supply and video source options to ensure uninterrupted operation in the event of a failure. Individual displays can be quickly serviced on-site. The larger 54" size means fewer displays are needed to create a video wall, reducing potential points-of-service.

The Leyard TWA fine pitch LED video wall displays are available through Leyard and Planar's global network of authorized resellers with additional models to be released later this year. For more information about the Leyard TWA Series, visit www.leyard.com/en/products/led-video-walls/tw/

SONY'S CANVAS DISPLAY TECHNOLOGY

Sony's new Canvas display system is a high-end display system that re-defines the landscape for large-scale visual entertainment. The new Sony technology, Crystal Light Emitting Diode Integrated Structure (CLEDIS), uses ultrafine R (red), G



(green), and B (blue) LEDs in a unique surface mounting structure as its light source, to deliver a visual experience not possible with any other display technology. Unlike other displays which show pixels and seams from several feet away, Canvas delivers a seamless viewing experience.

This new type of display technology delivers an unmatched viewing experience, featuring pixels that are only 0.003 mm² in size, with each pixel emitting light independently, allowing the remaining surface area to be more than 99% black and contributing to the technology's high contrast ratio in light and dark viewing environments. The surface-mounted light source also improves light use efficiency.

Canvas enables unlimited flexibility and creativity in public spaces and high-end visual entertainment. It is far more advanced when compared to the technologies currently available for large-scale display, offering a leap forward in a number of areas including depth, a high contrast of 1,000,000:1, brightness of 1,000 nits, high resolution, and color.

Canvas is a seamless direct view display that features a viewing angle of nearly 180 degrees, with corner-to-corner image uniformity, even on a large screen, helping viewers get a true sense of an object's depth and level of detail no matter where they are standing when observing the display. It is scalable in nature, made up of multiple display units (each measuring 18 x 16 inches) that can be joined together with no bezels to create a limitless and unified large-screen display of any size or aspect ratio needed.

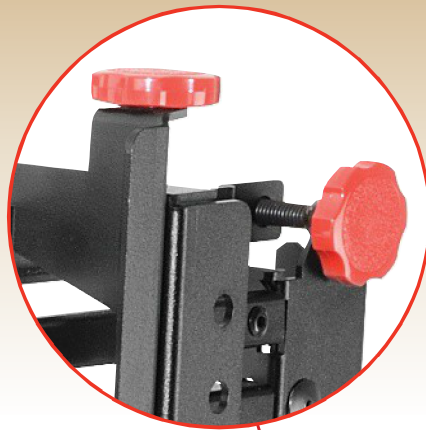
Canvas has a brightness of 1000 cd/m² and will support High Dynamic Range (HDR) content, producing imagery with 10-bit color depth and a wide color gamut (approximately 140% of sRGB). It also features Sony's unique pixel drive circuitry, to achieve fast video response with a frame rate of 120fps. This is critical for sports, concerts, or training simulations, where users need to present large screen visuals with no delay or motion artifacts. Canvas is not projection, it is a seamless direct view display. There are no overlays, no diffusers and no additional attachments required.

Sony's Canvas display technology is designed for commercial applications and immersive experiences requiring a realistic, large scale, high resolution visual experience - for museums, industrial product design and manufacturing, command and control, theme parks, automotive, medical, high-traffic lobbies, corporate boardrooms, churches, educational institutions and broadcast studios.



REIGN SUPREME

The King of All Video Wall Mounts



Effortless Precision

With the addition of tool-less lateral adjustment, the SmartMount[®] Supreme Video Wall Mount offers more micro-adjustment than ever before, resulting in precise video wall alignment. Effortlessly find the perfect position by simply turning the knobs. These innovative features save you money by cutting down on installation and labor time.

Learn more at peerless-av.com

© 2016 Peerless Industries, Inc. All rights reserved.

peerless-AV[®]

SMARTMOUNT[®]
SUPREME