



# INSTALLATION GUIDE

## BBS / BBCD070

TO SUIT SUZUKI GJ JIMNY 2018+



- Ironman 4x4 BBS / BBCD070 Bull Bars to suit Suzuki GJ Jimny 2018+
- It will take about 3.5 hours to install
- All bolts, washers, spring washers and nuts are supplied unless otherwise indicated
- All drilled holes must have anti-corrosion treatment applied

DATE OF ISSUE: 151019

**NOTE: This product has been tested for air bag compatibility and therefore the mounting system MUST NOT BE modified**

**IMPORTANT:** Bull Bar installations should only be done by a qualified person and it's the responsibility of this person to ensure correct fitment.

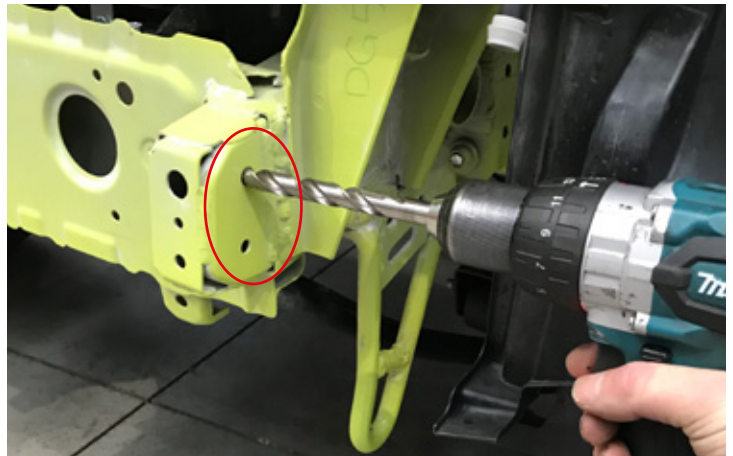
1. Before installation check bull bar application is compatible with your vehicle.

2. Remove bumper and air dam.  
Set aside daytime running lights and headlight washers for later re-install at step 15.



3. Enlarge the four (4) existing holes in front of the chassis rail to 13mm as shown.

Ensure ALL HOLES DRILLED are treated with anti-corrosion sealant prior to proceeding.



4. Drill 12mm hole on each side of the support beam as shown.

Ensure ALL HOLES DRILLED are treated with anti-corrosion sealant prior to proceeding.



- 5.** Lift winch cradle into position and secure to outer two (2) holes using 2 x 75mm M12 bolts, washers and nuts supplied. Leave hose.

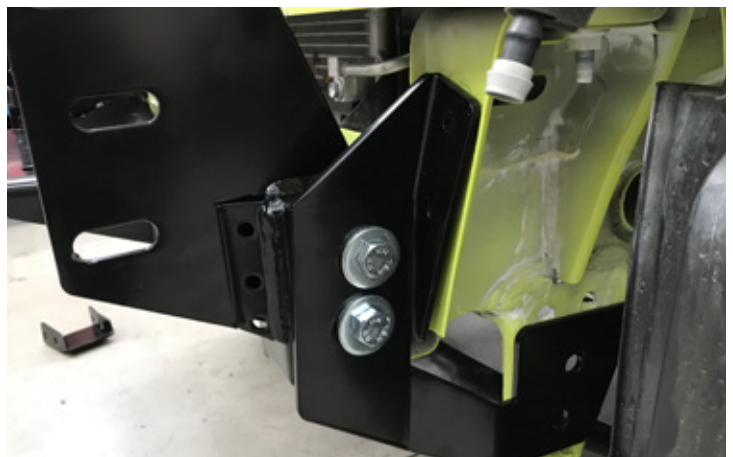


- 6.** Using the backing plate, two (2) crush tubes and the remaining 75mm M12 bolts, washers, spring washers and nuts, sandwich the support beam through the two (2) centre holes of the cradle.



- 7.** On the passenger side, use the bent support brace and attach to the two (2) outer holes of the cradle using two (2) 90mm M12 bolts, washers and nuts. (Use 24mm outside diameter washers on the inside of the cradle).

Repeat the process for the driver side of the vehicle using the straight support bracket.



- 8.** Use the Four (4) 50mm M12 bolts, washers and nuts to sandwich the tie down points. (Driver side plate aligns with the holes, and passenger side plate holes are offset).



- 9.** Using the support bracket as a guide, Drill two (2) 10mm holes through panel as shown.

Ensure ALL HOLES DRILLED are treated with anti-corrosion sealant prior to proceeding.



- 10.** Insert support bracket into body mount area and attach using 40mm M10 bolts.

Tighten and use as a guide to drill two (2) 10mm holes at the rear.



- 11.** Use Four (4) 40mm M10 bolts, washers, nuts and small backing plates to sandwich the rear of the body mount.



- 12.** If winch is being installed, refer to winch installation instructions on page 6.

- 13.** Unwrap bull bar. Check over riders and light assemblies are tight in bull bar before installation.

- 14.** Lift bull bar into position and secure using the M12 bolts, washers and nuts supplied. Ensure there is a 10 - 15mm gap between the bar and the guard. Tighten all bolts.

Drill and pin using Four (4) M10 bolts.

Ensure ALL HOLES DRILLED are treated with anti-corrosion sealant prior to proceeding.



- 15.** Install headlight washers and re-fit daytime running lights into bar removed in step 2.

- 16.** Fit centre under trays with M8 bolts and washers and nuts.

Cut the inner guards and fit the side under trays using the rest of the M8 bolts, washers and nuts.



# Winch Installation

1. Bolt fairlead to recess in front of bull bar using bolts, washers and nuts provided.



2. Fit bull bar to vehicle referring to steps of bull bar fitting instructions.

3. Mount control box in desired location.



4. Connect three colour coded cables to the corresponding poles on winch motor.



5. Connect the thin black earth wire and negative battery cable to the earth connection on the opposite side of winch motor.



6. Run the positive and negative battery cables into the engine bay taking care to secure cables away from any sharp or moving objects.

7. Connect positive and negative battery cables main battery of vehicle (Not Auxilliary Battery).

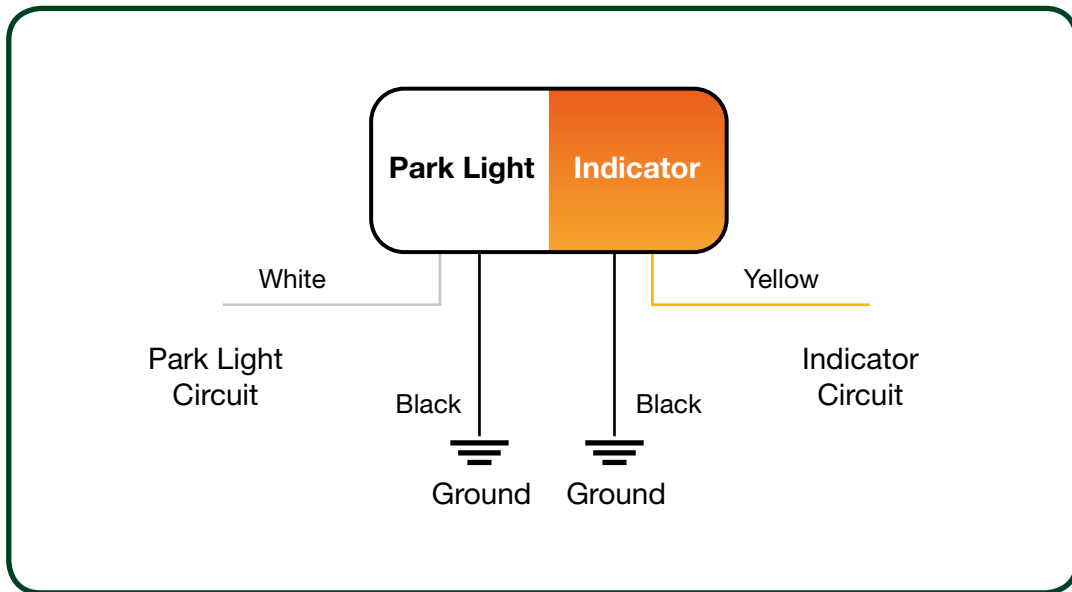
8. Attach breather hose to barb fitting on winch motor. Run hose to the highest available point in engine bay and cable tie in position. Cable tie hose away from any sharp, hot or moving objects.

Refer back to step 18 of the Bull Bar fitting instructions on page 7



# Wiring Diagrams

## PARK LIGHT & INDICATOR



## FOG LIGHTS

