

INNOPLAST™

Innovative Polymer Products

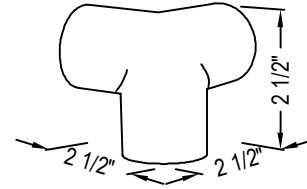
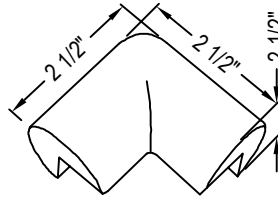
INNOPLAST
10120 GOTTSCHALK PKWY
CHAGRIN FALLS, OH 44023
TOLL FREE: 1-800-516-9287
PHONE: (440) 543-8660
FAX: (440) 543-8661
www.innoplast.com

SELECT DESIRED GUARD LENGTH:

1 METER

5 METERS

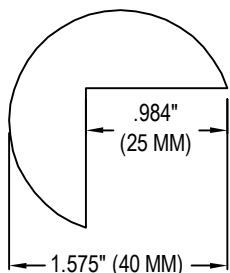
SELECT DESIRED PROTECTIVE CORNER MODEL:



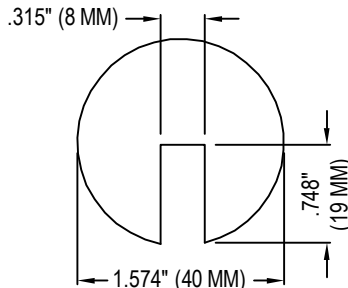
SELECT DESIRED GUARD MODEL:

TWO DIMENSIONAL TYPE A PROTECTIVE CORNER

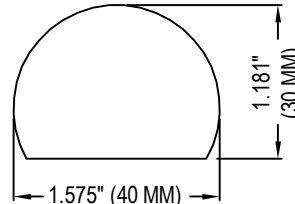
THREE DIMENSIONAL TYPE A PROTECTIVE CORNER



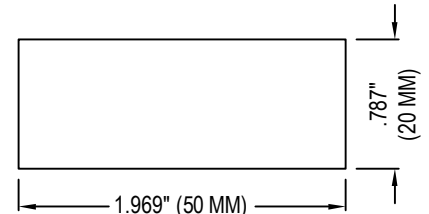
CORNER GUARD TYPE A



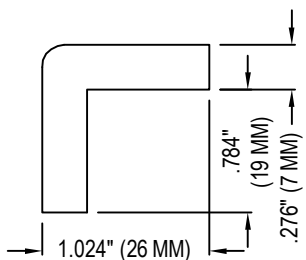
EDGE GUARD TYPE B



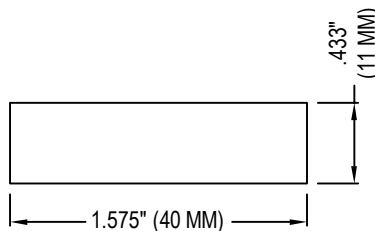
SURFACE GUARD TYPE C



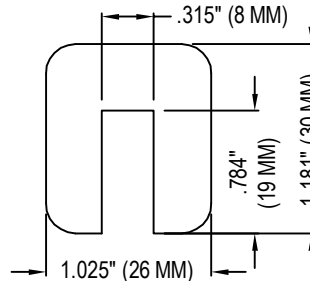
SURFACE GUARD TYPE D



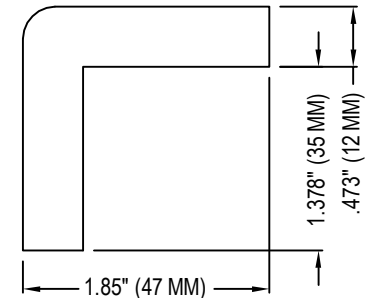
CORNER GUARD TYPE E



SURFACE GUARD TYPE F



EDGE GUARD TYPE G



CORNER GUARD TYPE H

SPECIFICATIONS:

MATERIAL: RECYCLABLE POLYURETHANE FOAM, COMPLETELY FREE OF CFCS.

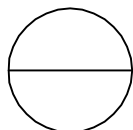
INSTALLATION: "PEEL AWAY" ADHESIVE INSTALLATION ON GREASE-FREE SURFACES (KNUFFI® PERFORMS WELL IN TEMPERATURES FROM -40°F TO +212°F (-40°C TO 100°C).

GUARD PRODUCT COLORS: YELLOW / BLACK.

PROTECTIVE CORNER PRODUCT COLOR: BLACK.

NOTES:

1. INSTALLATION TO BE COMPLETED IN ACCORDANCE WITH MANUFACTURER'S SPECIFICATIONS.
2. DO NOT SCALE DRAWING.
3. THIS DRAWING IS INTENDED FOR USE BY ARCHITECTS, ENGINEERS, CONTRACTORS, CONSULTANTS AND DESIGN PROFESSIONALS FOR PLANNING PURPOSES ONLY. THIS DRAWING MAY NOT BE USED FOR CONSTRUCTION.
4. ALL INFORMATION CONTAINED HEREIN WAS CURRENT AT THE TIME OF DEVELOPMENT BUT MUST BE REVIEWED AND APPROVED BY THE PRODUCT MANUFACTURER TO BE CONSIDERED ACCURATE.
5. CONTRACTOR'S NOTE: FOR PRODUCT AND COMPANY INFORMATION VISIT www.CADdetails.com/info AND ENTER REFERENCE NUMBER 5132-040



PADDED PRODUCTS

KNUFFI PADDED PRODUCTS