

 sodastream®

sodastream DUO™

TWO WAYS TO SPARKLE

REGISTER NOW
AND UPGRADE YOUR
SODASTREAM EXPERIENCE

scan or go to
sodastream.com/regd



NEED HELP?
CALL US:

UK 0800 085 8373

AU 1300 763 278

SG +65-9009-0488

ZA 0800 00 22 91

NZ 0800 232 633

WELCOME TO THE SPARKLING REVOLUTION!

Now you can create your own sparkly drinks at home and help Planet Earth have less waste and more sparkle!

Your new SodaStream DUO™ Sparkling Water Maker will give you double the options and double the fun!

Use the sleek glass carafe to serve your favourite chilled fizzy drink at home or enjoy a sparkly drink anywhere with your new on-the-go plastic bottle.

Whatever you choose, inside or out, fizz it with style - and all at the push of a button.

CONTENTS

ALL YOU NEED FOR A FRESH START	4
GET TO KNOW YOUR SodaStream DUO™	5
HOW TO'S	6
CO ₂ CYLINDER QUICK CONNECT	6
DUAL USE BOTTLE INSERT	8
FIZZING - THE MAGIC MOMENT	10
CLEANING & MAINTENANCE	12
USER INSTRUCTIONS	16
USER LICENSE	16
SETUP	17
CARE	18
FOR YOUR SAFETY	19
LIMITED WARRANTY	21



For your safety, please read the set up and safety instructions on pages 17 and 19-20 before using the Sparkling Water Maker. Save these instructions and provide them to any subsequent users.

For more details and information regarding our sparkling water makers, including how to use and troubleshooting guide, please go to **support** at [sodastream.com](https://www.sodastream.com)

ALL YOU NEED FOR A FRESH START



soda**stream** **DUO**™
SPARKLING
WATER MAKER

Winner of the Red Dot Award
for outstanding design



1 LITRE
PLASTIC
CARBONATING
BOTTLE



1 LITRE
GLASS
CARBONATING
CARAFE



soda**stream**
QUICK CONNECT
CO₂ CYLINDER*

Patent Pending Technology



reddot winner 2021

*The footprint analysis was carried for SodaStream Duo starter kit. Includes machine ,bottle ,cylinder and packaging.

*60L SodaStream® CO₂ Cylinder (under license) makes up to 60L of sparkling water depending on the level of carbonation and type of sparkling water maker.

GET TO KNOW YOUR sodastream DUO™



COMPATIBLE WITH THE FOLLOWING ONLY:

SodaStream reusable
Carbonating Bottles*



1L



1L

SodaStream quick
connect CO₂ cylinder



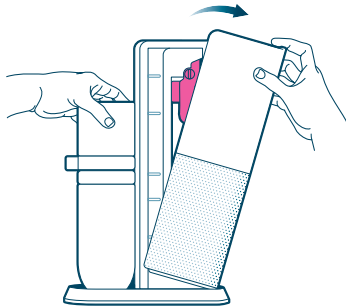
*Check for compatibility on the Bottle pack.

QUICK CONNECT CO₂ CYLINDER

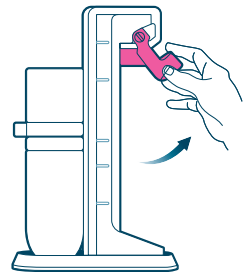


**FOR A SIMPLE
SET UP VIDEO -
SCAN AND WATCH**

1 Remove the seal
and pull off the cap



2 Pull open the
back cover



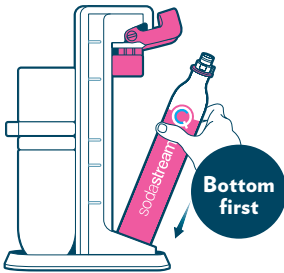
3 Raise the pink
cylinder handle



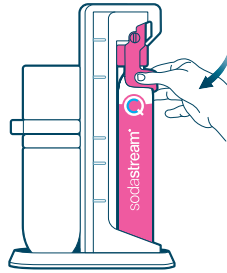
**Please carefully read the full SET UP instructions
and safety warnings on p.17 and 19-20**

*Make sure the carbonation bottle is not installed in the Sparkling Water Maker before inserting the cylinder.

STUFF TO KNOW

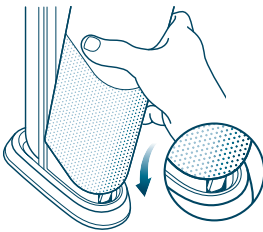


4 Insert the cylinder*, bottom first

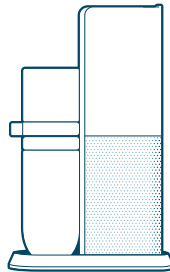


5 Lower the handle to lock

EXCELLENT!



6 Replace the back cover



Move on to the next step



Remember - your cylinder is reusable, when it runs out of CO₂, simply bring it back and get it exchanged.

PAY ONLY FOR THE CO₂ REFILL!

Get an extra cylinder so you never run out of bubbles!



Make sure to exchange with the right CO₂ cylinder for your sparkling water maker.



✓ compatible with your sodaStream **DUO™**

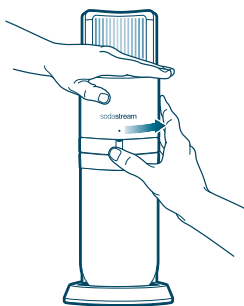


✗ not compatible

DUAL-USE BOTTLE INSERT



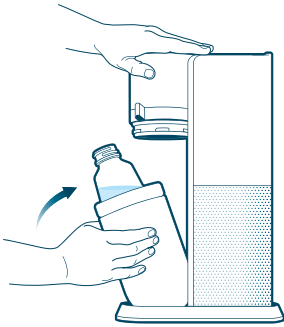
- 1** Fill the Glass Carbonating Carafe / Plastic Carbonating Bottle with cold water up to the fill line
- !** Always fizz water before adding any flavour



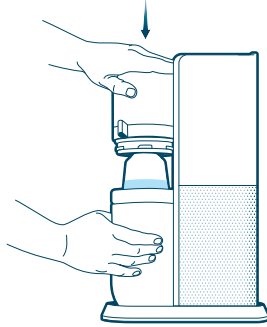
- 2** To unlock turn the lever to the right and the carbonating head will lift automatically
- 3** Insert the Glass Carbonating Carafe / Plastic Carbonating Bottle into the carbonating flask

**PREFER
A HOW-TO
VIDEO?**
Simply scan:

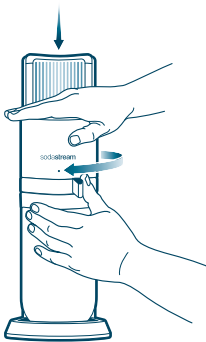




4 Return the carbonating flask to the upright position

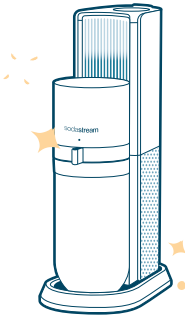


5 Push the carbonating head down and hold



6 Turn the lever to the left until it reaches the locked position mark

ALMOST DONE

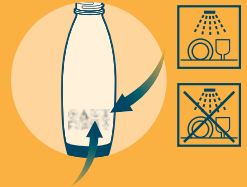


Now the last bubbly step

STUFF TO KNOW



To check if your bottle is dishwasher safe or not, look for one of these icons:



The bottle's expiration date is here



DID YOU KNOW?

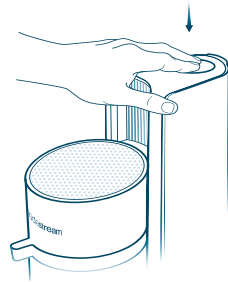
1 sodastream can save up to thousands of single use plastic bottles*



*Based on GlobalData Plc Global Volume Packaging Database for years 2017-2020.

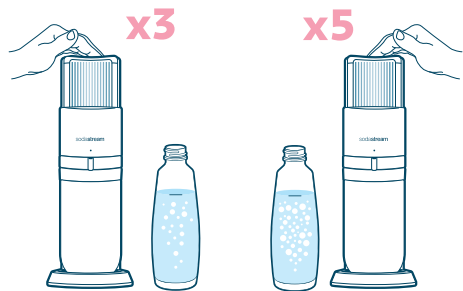
FIZZING

THE MAGIC
MOMENT!



Psss

- 1** **FIRMLY PUSH** the carbonating lever all the way down, **HOLD** for **1 SECOND**, and **RELEASE**



- 2** Repeat as desired:
3 times for standard fizz
5 times for strong fizz

**PREFER
A HOW-TO
VIDEO?**
Simply scan:





3 To unlock turn the lever to the right and the carbonating head will lift automatically

TADA!



REGISTER
NOW
AND UPGRADE
YOUR
SODASTREAM
EXPERIENCE

ALL DONE!

Enjoy your fab fizzy drink!

Having bubble trouble?

UK 0800 085 8373 SG +65 9009-0488
 AU 1300 763 278 ZA 0800 00 22 91
 NZ 0800 232 633

STUFF TO KNOW



PRO'S TIP:

Cold water fizzes better. Keep an extra bottle in the fridge, so you always have one ready to sparkle!



Want some flavour with your fizz?

Try our range of flavours at:

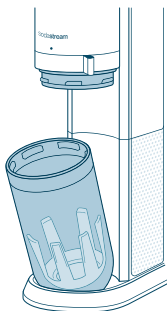
SODASTREAM.COM



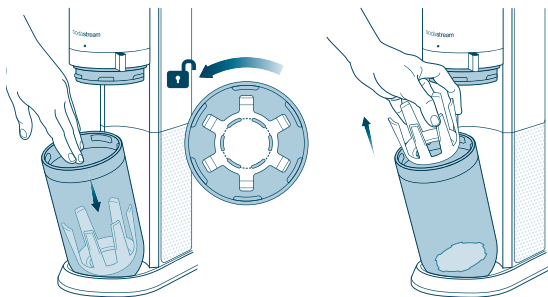
*Image for illustrative purposes only

Always fizz water before adding any flavour

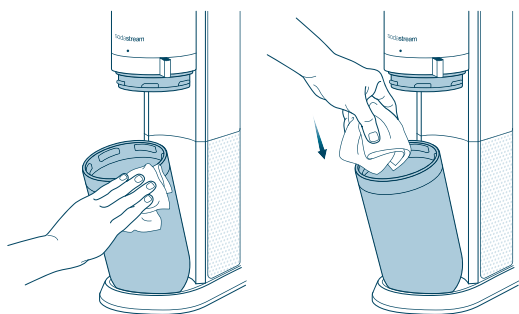
CLEANING & MAINTENANCE



- 1 To clean the flask, open and tilt towards you



- 2 Unlock the plastic bottle holder by twisting anti-clockwise and remove it



3 Using a cleaning cloth to wipe the inside and out

! Never use abrasive cleaners or sharp tools to clean. If needed, use a mild liquid dish soap and a damp cloth to gently clean.

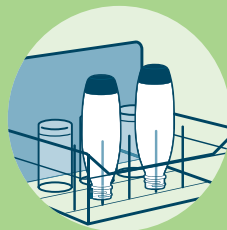


4 Return plastic bottle holder and twist clockwise to lock into place

STUFF TO KNOW



To clean your dishwasher safe bottle (look for the dishwasher safe icon), place upside-down on the dishwasher rack, on top of **ONE PIN ONLY**.



Wash non dishwasher safe bottles in the sink, using water that doesn't exceed 50 °c.



reddot winner 2021

sodastream DUO™

DESIGN AWARD WINNER 2021





soda stream
duo
c

soda stream

USER LICENSE

FOR ONE SODASTREAM QUICK CONNECT CYLINDER NOT FOR SALE

PROPERTY OF SODA-CLUB (CO2) GMBH OR ITS AFFILIATES PROVIDED UNDER LICENSE AND PATENT PENDING

This is a legally binding document between Soda-Club (CO2) GmbH or its affiliates ("SodaStream") and the consumer regarding the right to use a SodaStream Quick Connect Cylinder (the "Cylinder").

The Cylinder is proprietary to SodaStream, patent pending and protected by other intellectual property rights. Further, to protect users' safety and health, various directives and regulations govern and regulate the use, refilling, maintenance, retesting and repair of the Cylinder. SodaStream possesses the legally required knowledge and expertise to be responsible for strict legal compliance that can only be guaranteed if the Cylinder is maintained, examined, retested and refilled by it. Thus, the Cylinder remains the property of SodaStream and is provided under License.

1. When empty, please return the Cylinder to either SodaStream or an authorized SodaStream distributor in exchange for a full Cylinder, for the price of the gas refill only. This License will continue to bind the use of each subsequent Cylinder.
2. Refilling an empty Cylinder by third parties may infringe SodaStream's intellectual property rights, including patents and other proprietary rights, may be risky and may violate certain laws. SodaStream only warrants the safety of Cylinders refilled by it, bearing a SodaStream tamper proof valve seal. You may not remove or change any proprietary notice appearing on or accompanying the Cylinders.
3. If you return the Cylinder to SodaStream or an authorized SodaStream distributor, without exchanging it for a full one, you will be entitled to a return fee of 2 USD or local equivalent.
4. The Cylinder, together with this User License, may be transferred to a third party provided the third party agrees to be bound by the conditions and ownership rights expressed herein. Possession of this User License proves the right of its holder to use one Cylinder under the terms herein.

The laws of Switzerland govern this License.

For questions, please contact SodaStream International BV, Dongenseweg 200, 5047 SH, Tilburg, The Netherlands.

Please keep in a safe place

www.sodastream.com

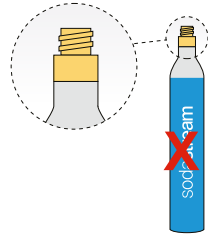
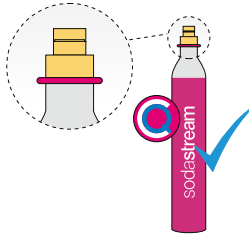
SET UP

SODASTREAM® CO₂ SCREW SYSTEM CYLINDER

COMPATIBLE SODASTREAM®
CO₂ QUICK CONNECT CYLINDER

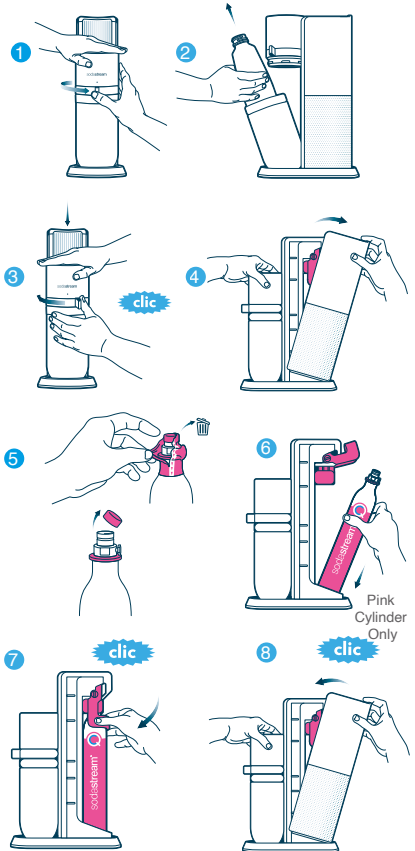
NON-COMPATIBLE
CO₂ SCREW SYSTEM CYLINDER

Please note that the SodaStream Duo™ is compatible with the SodaStream® CO₂ Quick Connect Cylinder and is NOT compatible with the SodaStream® Screw System Cylinder.



INSTALLING THE CO₂ CYLINDER

1. Place the SodaStream Duo™ Sparkling Water Maker on a flat sturdy surface in an upright position. Turn the carbonating flask lever to the right to the unlocked position. The carbonating head will rise automatically.
2. The carbonating flask will open. Pull the carbonating flask gently forward and remove the SodaStream® Glass Carafe / Plastic Carbonating Bottle if it is installed in the SodaStream® Sparkling Water Maker. **WARNING!** Never insert or replace the CO₂ Quick Connect cylinder while the Glass Carafe or Plastic Carbonating Bottle is installed in the Sparkling Water Maker. This can cause the Glass Carafe or Plastic Carbonating Bottle to burst.
3. Return the carbonating flask to the upright position, push and hold the carbonating head down and turn the carbonating flask lever left until it clicks into the locked position.
4. Gently pull the back cover away from the Sparkling Water Maker to remove.
5. Remove seal and cap from the SodaStream CO₂ Quick Connect Cylinder.
6. Raise the pink cylinder handle. Insert the CO₂ Quick Connect Cylinder in the back of the Sparkling Water Maker. **WARNING!** Never use the SodaStream CO₂ Quick Connect Cylinder if it appears to be damaged.
7. Lower the cylinder Pink Handle.
8. Reinstall the back cover. Now you are ready to create the bubbles.



CREATE THE BUBBLES

1. Fill the SodaStream Glass Carafe / Plastic Carbonating Bottle with cold drinking water up to the fill line. **WARNING!** Do not carbonate anything other than water. Other liquids can contaminate and clog internal parts, potentially resulting in excessive pressure, bottle failure during carbonation and serious injury. Never carbonate after flavouring has been added.

2. Place the SodaStream Duo™ Sparkling Water Maker on a flat sturdy surface in an upright position. Turn the carbonating flask lever to the right to the unlocked position. The carbonating head will rise automatically. **WARNING!** Never use a unit with a broken carbonating tube. This can cause excessive pressure, carafe/bottle failure and serious injury. Tilt the carbonating flask forward and insert the Glass Carafe / Plastic Carbonating Bottle into the carbonating flask. Return the SodaStream® carbonating flask to the upright position.

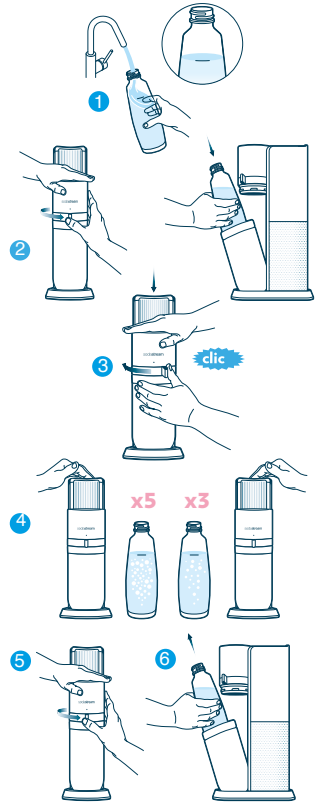
3. Push the carbonating head down and hold. Turn the carbonating flask lever left, to the locked position.

4. Push down firmly on the carbonating button for around one second, release and repeat. Repeat 3 times for standard fizz, 4 times for strong fizz, and more for extra strong fizz.

5. When the desired level of carbonation is achieved, please wait 3 seconds and turn the carbonating flask lever to the right to the unlocked position until the carbonating head starts to rise. As you start to turn to the unlock position you will hear the excess gas being safely released from the Glass Carafe / Plastic Carbonating Bottle.

6. Tilt the SodaStream® carbonating flask forward and remove the Glass Carafe / Plastic Carbonating Bottle from the SodaStream Duo™ Sparkling Water Maker.

7. Pour and enjoy a fresh sparkling drink!



Note: You may see small pieces of ice appear in the water during carbonation of very cold water. Any ice created will simply melt.

CARE

SodaStream DUO™ SPARKLING WATER MAKER CARE

- Never use abrasive cleaners or sharp tools to clean. If needed, use a mild liquid dish soap and a soft damp cloth to gently clean.
- Wipe spills to keep base dry.
- Do not place in water or wash in a dishwasher, doing so will seriously damage your Sparkling Water Maker.

GLASS CARBONATING CARAFE CARE

- The SodaStream Glass Carafe may be cleaned in a dishwasher.

PLASTIC CARBONATING BOTTLE CARE

- For Carbonating Bottles which are not "dishwasher safe", to clean, rinse Carbonating Bottles with cold or lukewarm water. **WARNING! Do not expose to heat above 50°C. Never wash or rinse in hot water. Do not wash in dishwasher.**
- For "dishwasher safe" Carbonating Bottles, to clean, either wash in dishwasher or rinse Carbonating Bottles with cold or lukewarm water. **WARNING! Do not expose to heat above 70°C.**

FOR YOUR SAFETY

SAVE THESE INSTRUCTIONS AND PROVIDE THEM TO ANY SUBSEQUENT USERS.

WARNING! Before using the Sparkling Water Maker, to reduce risk of personal injury and damage to your product, please read this important safety information.

Before allowing anyone to use your Sparkling Water Maker, please be sure they understand how to do so safely. Any servicing or repair should be performed by a SodaStream-authorized service representative.

The Sparkling Water Maker is only intended for use by people over the age of 12. People with reduced physical or mental capabilities should only use the product if they are supervised by an adult responsible for their safety and after they have been given instruction concerning the safe use of the product.

TO REDUCE THE RISK OF EITHER SERIOUS INJURY OR DAMAGE TO THE SPARKLING WATER MAKER DURING CARBONATION:

- Only use your Sparkling Water Maker in its upright position, on a flat, stable surface.
- Do not place your Sparkling Water Maker on a hot surface (e.g. kitchen oven/stove) and never use it close to a flame or leave in direct sunlight.
- Carbonate water only.
- Do not carbonate after flavour has been added. Other liquids (except water) can contaminate and clog internal parts, potentially resulting in excessive pressure and bottle failure during carbonation.
- Do not use the Sparkling Water Maker if the carbonating tube is broken or missing.
- Check that your Glass Carafe / Plastic Carbonating Bottle is properly in place before carbonating.
- Do not move your Sparkling Water Maker or try to open the bottle flask during carbonation.
- Do not carbonate an empty Glass Carafe / Plastic Carbonating Bottle.

CARBON DIOXIDE CO₂ CYLINDER

To reduce the risk of a CO₂ leak, personal injury and property damage:

- Do not insert a CO₂ Cylinder into the Sparkling Water Maker when a Carbonating Bottle is installed.
- Do not use if damaged. Inspect the CO₂ Cylinder and CO₂ Cylinder valve prior to use for dents, punctures, or other damage. If damaged, contact a SodaStream-authorized service representative.
- Do not tamper with the CO₂ Cylinder in any way, including puncturing, incinerating or removing the valve.
- Do not expose the CO₂ Cylinder to heat above 50°C. Protect from sunlight. Store in a well-ventilated area.
- Do not remove a CO₂ Cylinder from the Sparkling Water Maker when it is being operated.
- Do not handle or remove a CO₂ Cylinder while it is discharging CO₂.
- In the event of a CO₂ leak, ventilate the area, breathe fresh air and if feeling unwell seek immediate medical attention.

SODASTREAM GLASS CARAFE

To reduce the risk of bottle failure which can result in personal injury and property damage:

- Do not use the Glass Carafe if it is cracked, chipped or damaged in any way. Dispose of the Glass Carafe immediately and replace it with a new one.
- Do not use a glass carafe, other than original SodaStream Glass Carafe that is suitable for the SodaStream Duo™.
- Do not subject the Glass Carafe to extreme temperature fluctuations (e.g. do not put hot water in a cold Glass Carafe).
- Do not place the Glass Carafe in the freezer or in extreme cold below 1°C.
- **WARNING!** In the rare event that your Glass Carafe breaks during carbonation inside your Sparkling Water Maker do not open the carbonating flask. Any broken glass particles will be safely contained inside the carbonating flask. Please call your local SodaStream customer service representative for assistance.

PLASTIC CARBONATING BOTTLE:

To reduce the risk of bottle failure which can result in personal injury:

- For Plastic Carbonating Bottles not marked as "dishwasher safe", do not expose to heat above 120°F / 50°C . Never wash or rinse in hot water. Do not wash in dishwasher.
- For "dishwasher safe" Plastic Carbonating Bottles, do not expose to heat above 70°C.
- Do not place the Plastic Carbonating Bottle next to a heat source such as your kitchen oven/stove.
- Do not leave the Plastic Carbonating Bottle in a vehicle.
- Do not place the Plastic Carbonating Bottle in the freezer or in extreme cold below 1°C.
- Do not use the Plastic Carbonating Bottle if damaged, deformed, changes in shape, scratched, worn, or discoloured.
- Do not use a Plastic Carbonating Bottle after its expiration date.
- Only carbonate with Plastic Carbonating Bottles specifically designed to work with this Sparkling Water Maker, as shown on page 4 above.

BOTTLE WARNING ICONS:



Read the manual



Bottle failure may result
in personal injury



Never use after
expiry date



Never wash
in dishwasher



Never expose to temperatures
above 120°F / 50°C
or below 34°F / 1°C



Carbonate
water only



Never use if damaged
or deformed

FOR DISHWASHER-SAFE BOTTLES



Never expose to temperatures above
158°F / 70°C or below 34°F / 1°C



Dishwasher safe

SODASTREAM LIMITED WARRANTY

SODASTREAM SPARKLING WATER MAKERS

Great care has been taken to ensure that your Sparkling Water Maker was delivered to you in good condition. SodaStream warrants, subject to the terms and conditions set forth in this limited warranty, that your Sparkling Water Maker will be free of defects in materials and workmanship under normal home use for 2 (two) years following the date of purchase. It is recommended that you register your Sparkling Water Maker online by visiting www.sodastream.com and completing the product registration form available on the website.

If your Sparkling Water Maker malfunctions within the warranty period, and we determine the problem is due to faulty workmanship or materials, SodaStream will repair or replace it free of charge at SodaStream's discretion within the limitations set out in this warranty. SodaStream may replace your Sparkling Water Maker with a reconditioned Sparkling Water Maker, or an equivalent one if the model you purchased is no longer available. No refunds shall be given. This limited warranty is available to consumers who purchased the Sparkling Water Maker for personal, family or household use.

This warranty DOES NOT cover damages to Sparkling Water Maker resulting from:

- Abuse, misuse, alteration of the Sparkling Water Maker, or commercial use.
- carbonating liquids other than water.
- Normal wear and tear (e.g. discoloration).
- Product malfunctions that were a result, in whole or in part, by alteration, disassembly, or repair of the Sparkling Water Maker by a servicer other than an authorized SodaStream Service Center.
- the use of CO₂ Cylinders or carbonating bottles other than those approved by SodaStream for use with your Sparkling Water Maker.
- the use of the Sparkling Water Maker with an adapter connected to the Cylinder valve or to the Sparkling Water Maker.
- the use of an expired Carbonating Bottle.
- accident, shipment or anything other than normal household use.

This warranty DOES NOT cover the Carbonating Bottles and CO₂ Cylinders.

SodaStream is not liable for incidental or consequential damages. The consumer's sole and exclusive remedy shall be repair or replacement according to the terms and conditions of this warranty. Some local laws do not allow the exclusion or limitation of these damages, so these exclusions may not apply to you. To the extent that this warranty is inconsistent with local law, this warranty shall be deemed modified to be consistent with such local law.

You may also have other rights, which vary in accordance with local laws. The benefits given to the consumer by this warranty are in addition to other rights and remedies that may be afforded to the consumer by law in relation to this Sparkling Water Maker.

TO OBTAIN WARRANTY SERVICE FOR YOUR SPARKLING WATER MAKER

If your Sparkling Water Maker is in need of warranty service, please contact SodaStream Customer Service by visiting www.sodastream.com. A SodaStream representative will give you specific instructions on how to arrange for the shipment of your Sparkling Water Maker, at your expense, to one of our authorized service centers. Only SodaStream, or its agents, are authorized to provide warranty repairs or service to your Sparkling Water Maker.

NON-WARRANTY SERVICE

If SodaStream or its authorized agents determine that the malfunction or damage to your Sparkling Water Maker is not covered by the warranty, SodaStream will repair the Sparkling Water Maker only upon payment of the determined repair charge.

FOR AUSTRALIAN RESIDENCE

Our Sparkling Water Maker comes with guarantees that cannot be excluded under the Australian Consumer Law.

Australian residence are entitled to a replacement or refund for a major failure and compensation for any other

reasonably foreseeable loss or damage. Australian residence are also entitled to have the Sparkling Water Maker

repaired or replaced if it fails to be of acceptable quality and the failure does not amount to a major failure. The

issuer of this warranty is SodaStream Australia Pty Ltd., 21 Henderson Road, Knoxfield, Victoria 3180, Australia,

Telephone No.: 1300 763 278, email: sales-australia@sodastream.com Should the Sparkling Water Maker suffer a

major failure or other reasonably foreseeable damage, contact us at the above phone number, email or mailing

address to present your claim for the warranty. If Australian residence are returning the Sparkling Water Maker in

accordance with their rights under the Australian Consumer Law: (a) the Sparkling Water Maker does not need to

be in its original packaging to be returned, however you must ensure that the Sparkling Water Maker is adequately

protected for transit; and (b) Australian residence will be required to pay any delivery costs when returning items to

us, however SodaStream Australia Pty Ltd., will refund reasonable delivery costs if they are entitled to a remedy

under the Australian Consumer Law (subject to you providing proof of these costs). The benefits to the Australian

consumer given by this warranty are in addition to other rights and remedies that may be afforded to the Australian

consumer by law in relation the Sparkling Water Maker.

SODASTREAM CO₂ QUICK CONNECT CYLINDERS

Your Sparkling Water Maker has been designed to operate with a SodaStream CO₂ Quick Connect Cylinder. The use of other CO₂ Cylinders is not recommended as they may not be compatible with a SodaStream Sparkling Water Maker. Damages resulting from the use of a cylinder other than a the SodaStream CO₂ Quick Connect Cylinder or use of the SodaStream CO₂ Quick Connect Cylinder not in accordance with the instructions included in this User Guide are not covered by the warranty.

The SodaStream CO₂ Quick Connect Cylinder is provided to you under license. The license allows you to exchange your empty Cylinder for a full one for the price of the CO₂ only.

SODASTREAM GLASS CARAFE / PLASTIC CARBONATING BOTTLE

Your Sparkling Water Maker has been designed to operate with a compatible SodaStream Glass Carafe / Plastic Carbonating Bottles . Damages resulting from the use of a glass carafe / carbonating bottle other than a compatible SodaStream Glass Carafes / Plastic Carbonating Bottles not in accordance with the instructions included in this User Guide are not covered by the warranty.

SodaStream Glass Carafes / Plastic Carbonating Bottles are available from authorized SodaStream retailers.

TERMS AND CONDITIONS

Any and all claims, complaints, demands for judgment or legal actions brought hereunder

CALL US

WE'RE HERE FOR ALL YOUR BUBBLY QUESTIONS:

UK 0800 085 8373

AU 1300 763 278

SG +65 9009-0488

ZA 0800 00 22 91

NZ 0800 232 633

COME ON BOARD

REGISTER YOUR MACHINE AND RECEIVE
EXCLUSIVE INFORMATION AND OFFERS

Go to sodastream.com/regd or scan the code:



