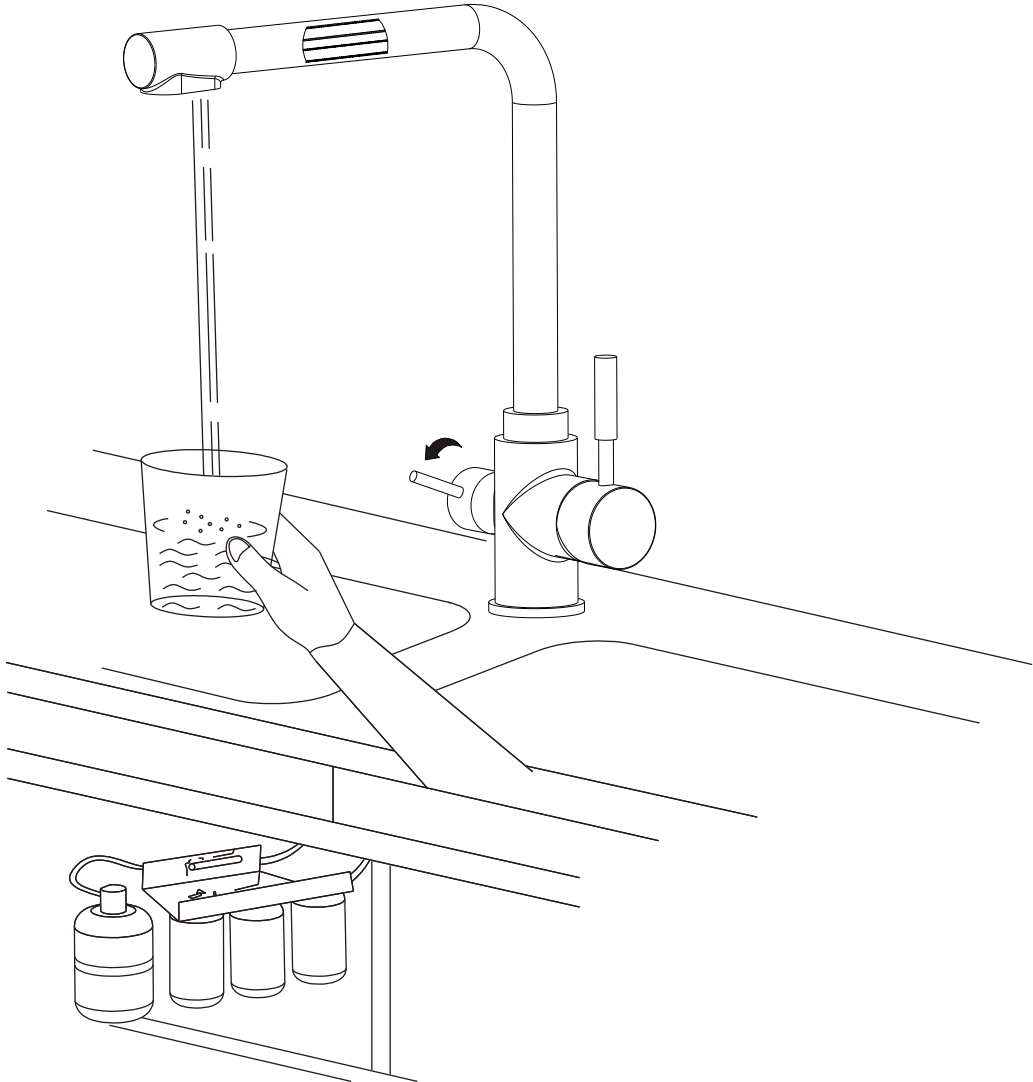




# Hommix Sasani 3-Way Tap





# Installation Instructions

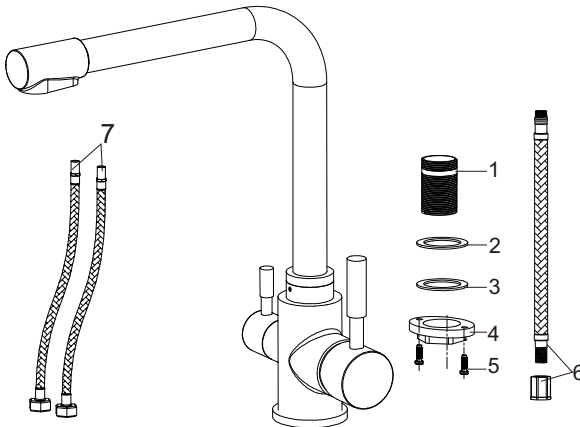
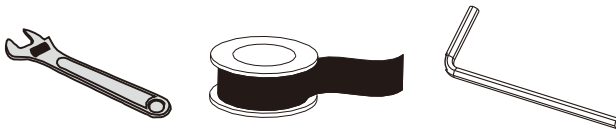
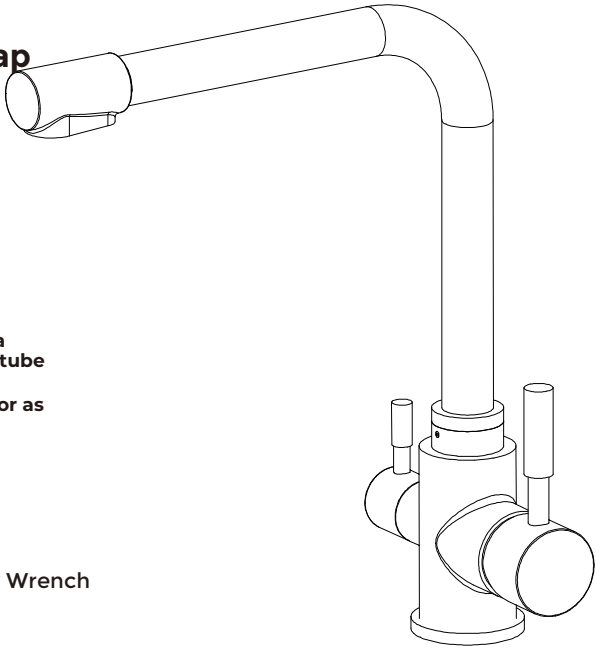
## Hommix Sasani Three Way Kitchen Tap

### Specifications

1. Ceramic valve cartridge
2. Flow rate: 2.2G/M base on 0.5Mpa
3. 1/4" Connector for filtered water tube
4. 2 x G-1/2" Flexible Hoses
5. G-3/8 or G-1/2 Hose pipe connector as required

### Installation Tools

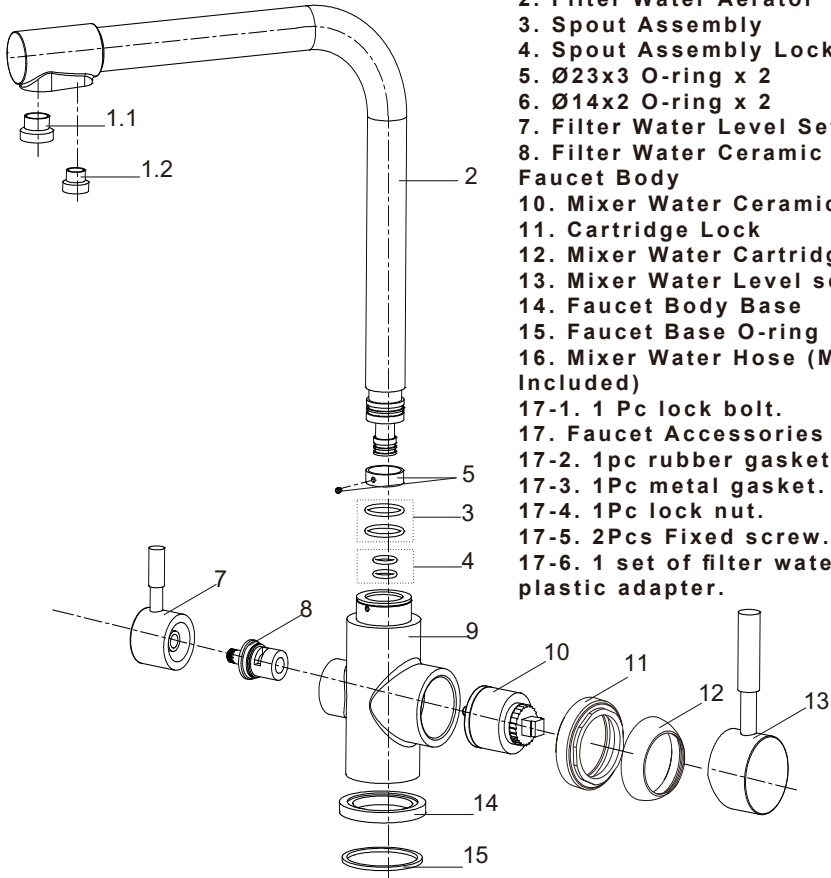
- Adjustable Spanner / Monkey Wrench
- PTFE tape
- 2.5mm Allen key



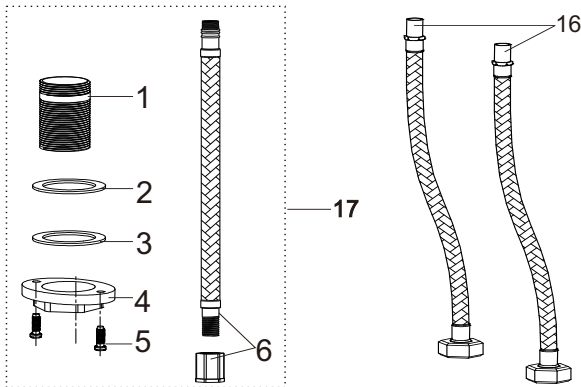
### Accessories

1. 1 Pc lock bolt
2. 1 pc rubber gasket
3. 1 Pc metal gasket
4. 1 Pc lock nut
5. 2 Pcs of fixing screws
6. 1 set filtered water pipe and a plastic adapter (1/4" push fit)
7. 2 Pcs hot and cold 600mm hoses

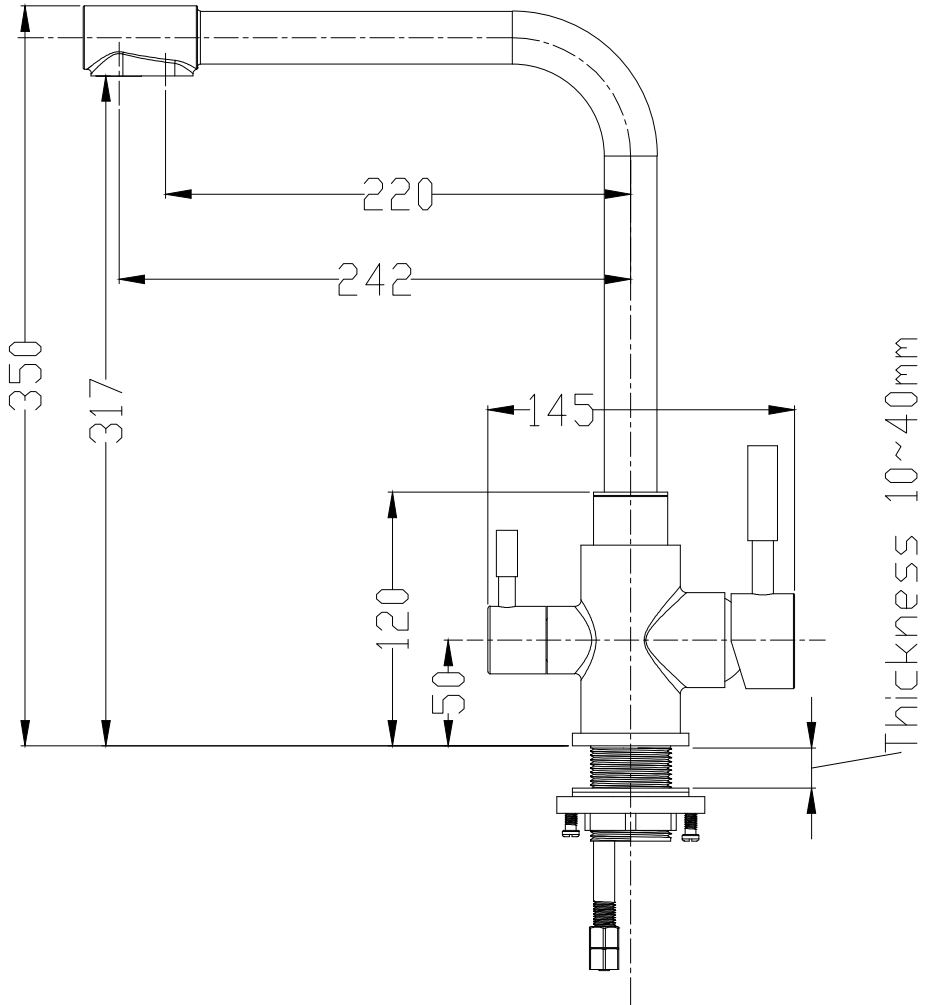
# Parts



1. Mixer Water Aerator
2. Filter Water Aerator
3. Spout Assembly
4. Spout Assembly Lock Ring set
5.  $\text{\O}23 \times 3$  O-ring x 2
6.  $\text{\O}14 \times 2$  O-ring x 2
7. Filter Water Level Set
8. Filter Water Ceramic Cartridge
9. Faucet Body
10. Mixer Water Ceramic Cartridge
11. Cartridge Lock
12. Mixer Water Cartridge Cover
13. Mixer Water Level set
14. Faucet Body Base
15. Faucet Base O-ring  $\text{\O}42 \times 2.5$
16. Mixer Water Hose (May Not Be Included)
- 17-1. 1 Pc lock bolt.
17. Faucet Accessories
- 17-2. 1pc rubber gasket.
- 17-3. 1Pc metal gasket.
- 17-4. 1Pc lock nut.
- 17-5. 2Pcs Fixed screw.
- 17-6. 1 set of filter water pipe and a plastic adapter.

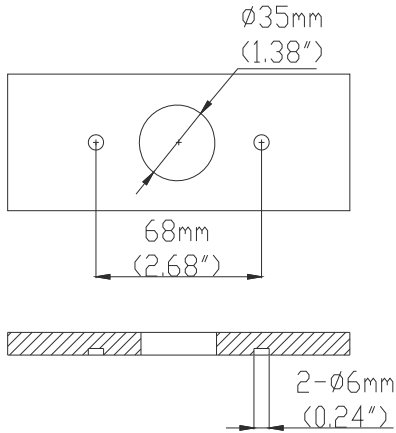


# Profile Drawing



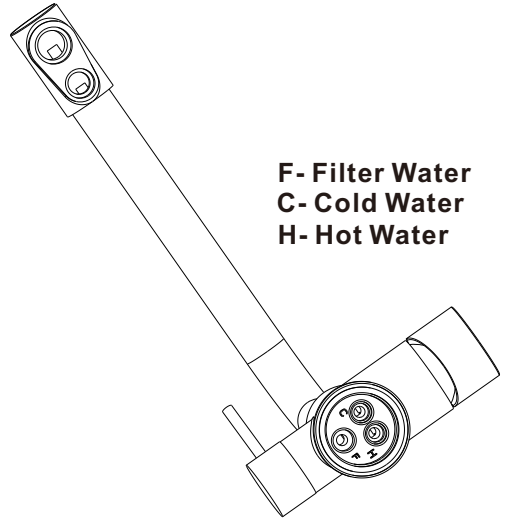
## Important Note 1

You do not need to drill any holes, the illustration below demonstrate measurements of the lock nut screws



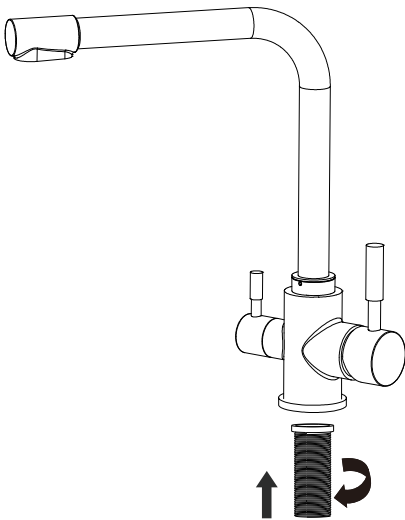
## Important Note 2

Please ensure the tap hoses are attached to the correct positions as marked below.



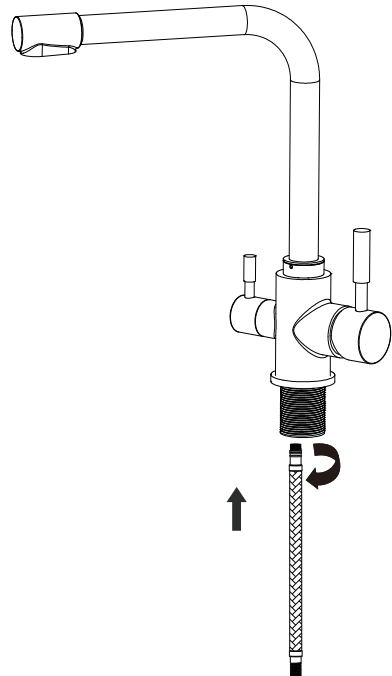
### Step: 1

Attach the lock bolt to the tap



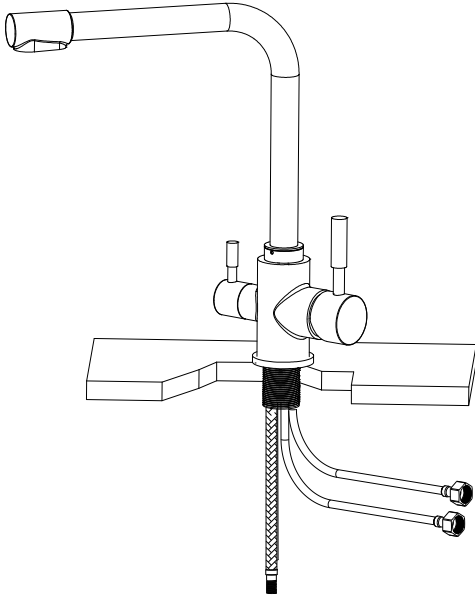
### Step: 2

Attach the filter water hose



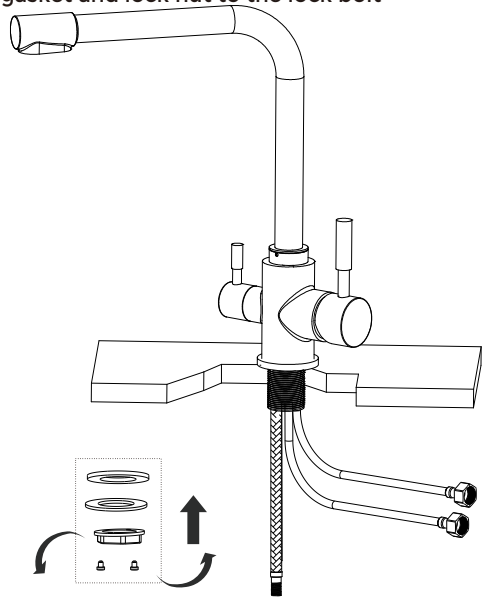
### Step: 3

Attach the Hot and Cold hoses

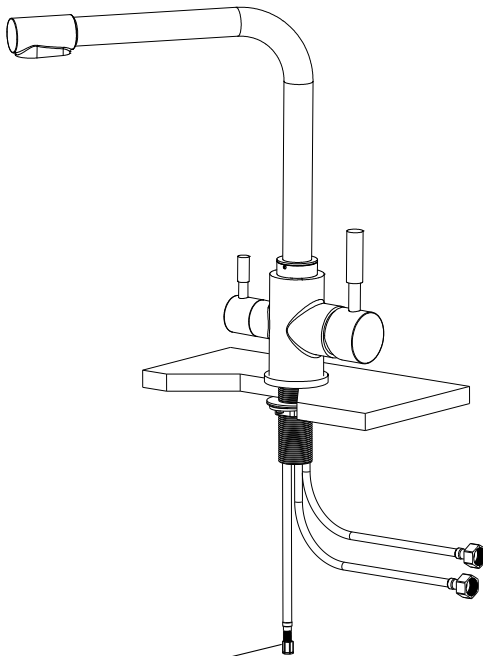


### Step: 4

Insert the tap with the tubes attached through the hole and attach the rubber gasket, metal gasket and lock nut to the lock bolt

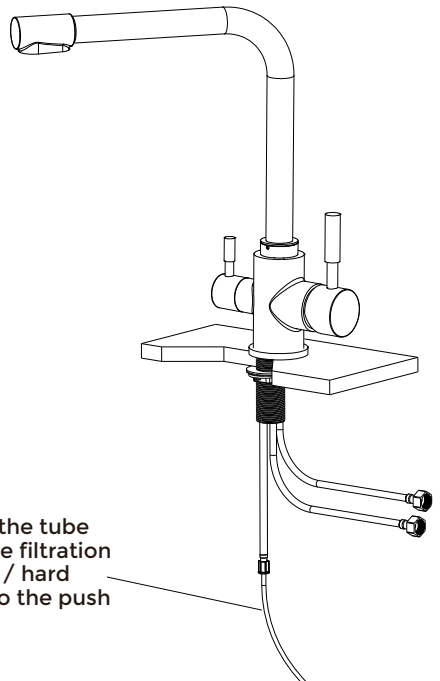


### Step: 5



Attach the fitting to the pipe if it's not already attached

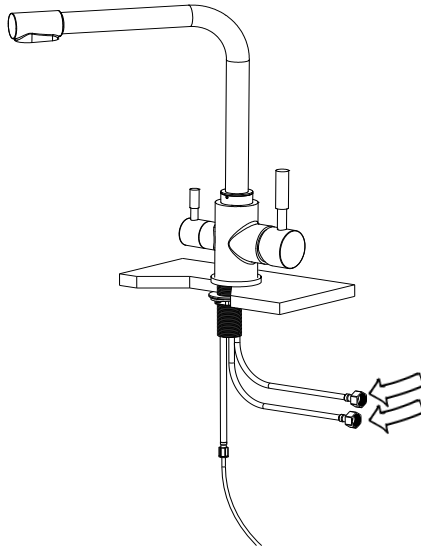
### Step: 6



Attach the tube from the filtration system / hard water to the push fit

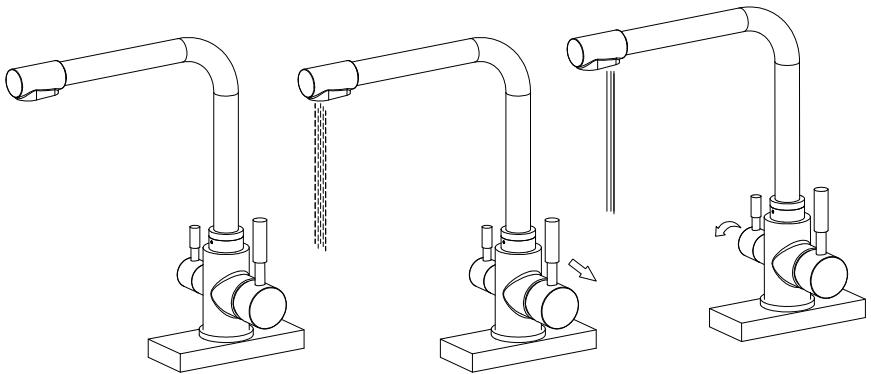
## Step: 7

Connect the Hot & Cold Hoses to the supply water



## Step: 8

Test the your Hommix Sasani to ensure it is dispensing water

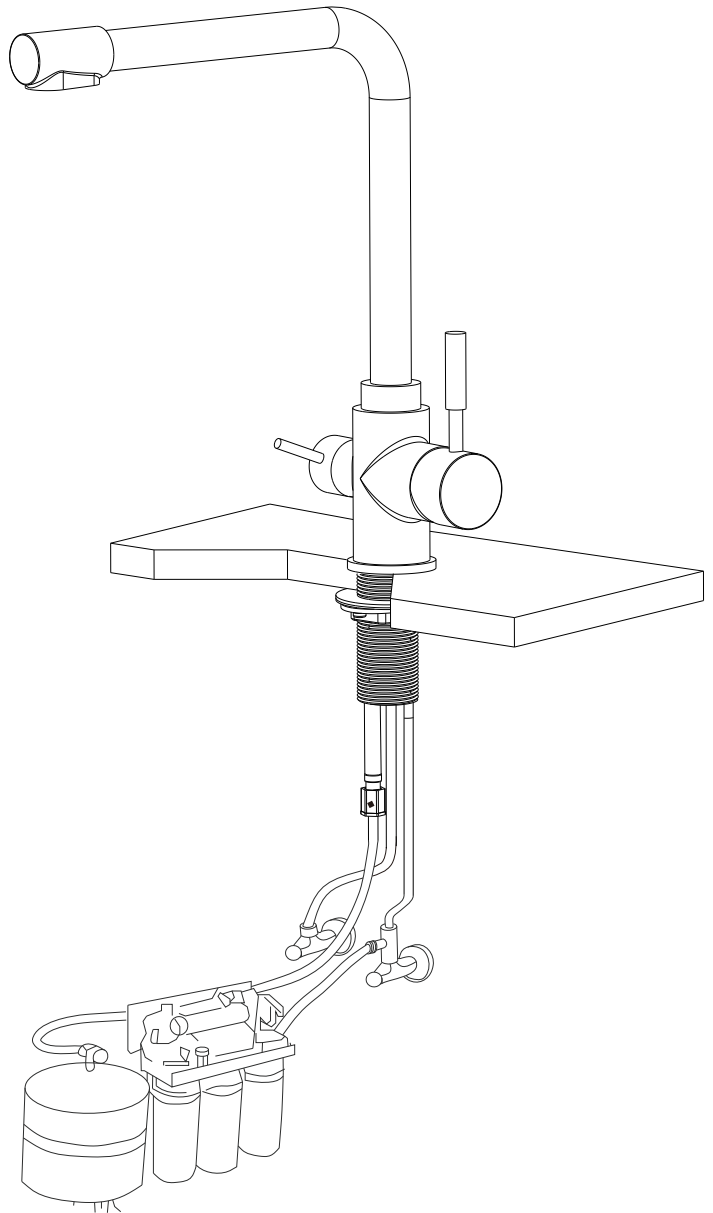


## **Important Note 3**

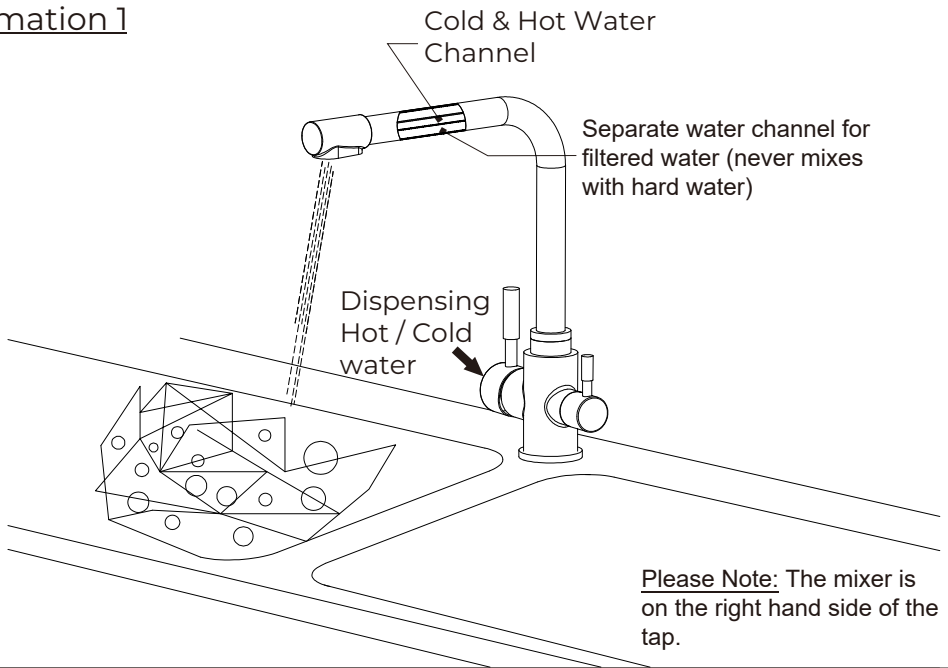
Please ensure any sand, silt, rubbles or anything that may block the valve cartridge and aerator is removed and cleaned before fixing the tap. During construction, the water pipes often end up with these, please ensure it is cleaned before connecting the hoses to the hot and cold.



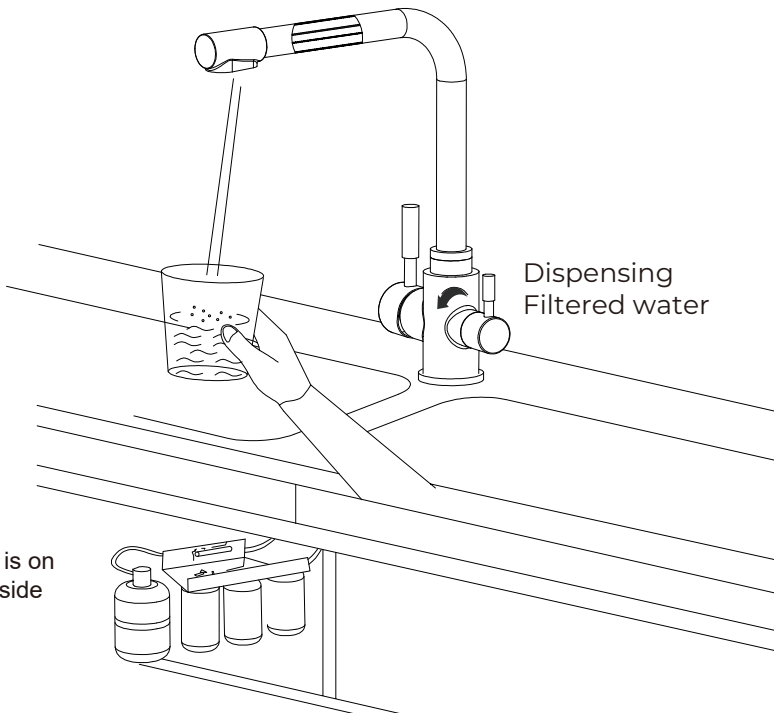
Illustration of a Reverse Osmosis System connected to the Hommix Sasani 3-Way Tap



## Information 1



## Information 2





## **Taking care of your tap**

Your Hommix Verona 3-Way Tap requires minimal care and maintenance but here are a few tips:

### **DON'Ts**

DON'T use cleaning products, chemicals or any other types of substances to clean the tap

DON'T use organic solvents or acidic cleaners, lime-scale removers, household vinegar or cleaners containing acetic acid for cleaning

DON'T use any sort of brushes or abrasive sponges and scrubs

### **DOs**

DO dry the tap after washing up with a dry soft cloth (we advise this for cleaning your sink too)

DO use a soft damp cloth followed by a dry soft cloth to clean if the tap requires cleaning

That's all! We did say minimal care and maintenance. If you have any questions or need help with installation, please do not hesitate to contact us.

Live Chat - <https://www.hommix.co.uk>

Call us - 0330 113 9292

Email us - [info@hommix.co.uk](mailto:info@hommix.co.uk)

