



# **Installation Guide**

## **UC1000 / 4000**



Thank you for purchasing a Danamark Quantum Under Counter Drinking Water System. Rest assured that you have purchased the very finest in point-of-use water purification. Should you have any questions or concerns, please call us at:  
1-888-DANAMARK (1-888-326-2627)

## Contents

Item	Part Number	Description	Qty
A	Q1000	Quantum 1000 Filter Cartridge	1
B	QH3	Quantum Head	1
C*	3046-44	Mounting Bracket	1
D*	3081-31	Restrictor Fitting (Outlet)	1
E*	PI011223S	Male Connector (Inlet)	1
F	CI3208U7S	Faucet Connector	1
G	FCTT8-520	Teflon Tape	1
H	PPASV121208W	Angle Stop Adaptor	1
I	MS1034	SS Mounting Screws (Phillips)	2
J	TBL14	¼" Blue Waterline	10'
K	9970-56	Designer Series Chrome Faucet	1

\*Installed on (B) Quantum Head

### Tools Required:

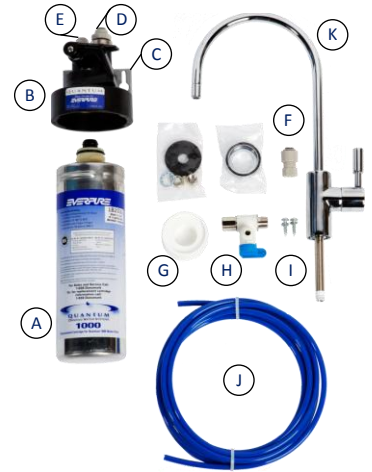
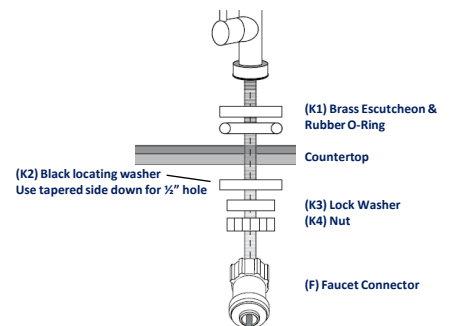
- Phillips screwdriver
- ½" Drill bit and drill
- Adjustable wrench

### Preparation For Installation: \*Important: Use only on cold water supply\*

1. Shut off cold water supply to sink.
2. Relieve line pressure by opening the cold water tap for a few seconds until water stops; then close the tap.
3. Select a suitable location to mount (B) Quantum Head and (A) Cartridge, leaving approximately 2" of space below cartridge for ease of future cartridge changes.
4. Select a suitable location to mount (K) Chrome Faucet, minimum of 1" from edge of the sink.

### Installation of Faucet:

1. When drilling the countertop; place the (K1) Escutcheon plate, with dome face up, 1/8" from the back of the countertop and a minimum of 1" from the edge of the sink. Use as a template to drill a ½" hole.
2. Assemble faucet as shown on diagram to the right.
3. Wrap threaded faucet stem with the provided (G) Teflon tape.
4. Tighten (F) Faucet Connector to the threaded faucet stem.



### Contents of Designer Series Chrome Faucet

(Part # 9970-56)

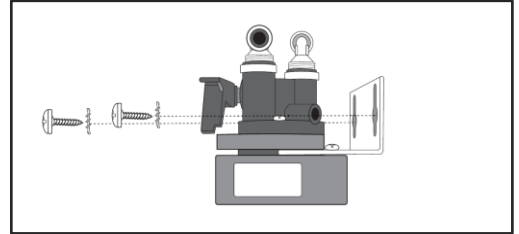
Item	Description	Qty
K1	Brass Escutcheon (with O-Ring)	1
K2	Black Locating Washer	1
K3	Lock Washer	1
K4	Nut	1
K5**	Compression Nut	1
K6**	Tube Support/Insert	1
K7**	Delrin Sleeve	1

\*\*Used in place of (F) CI3208U7S for compression fitting installations



**Mounting Filter Head:**

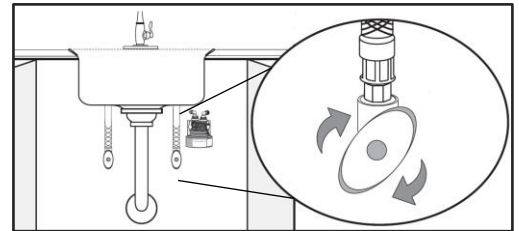
1. After selecting a suitable location to allow for future cartridge changes (Extra 2" under cartridge), mount the **(B)** Quantum Head with installed bracket to wall under sink.
2. Use the provided **(I)** SS Mounting Screws and ensure a secure mount. **(Fig. 1)**



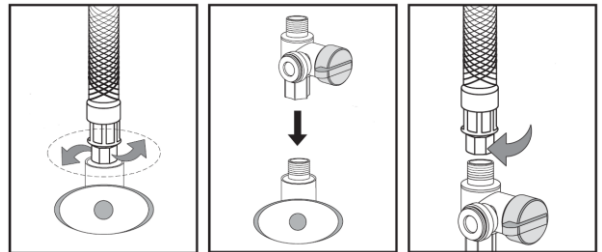
**Fig. 1**

**Connecting Inlet Water Line**

1. Locate and close the cold water Angle Stop Valve under your kitchen sink. Open cold water faucet to release water pressure. **(Fig. 2)**
2. Unscrew and disconnect the braided tubing on top of the Angle Stop Valve. **(Fig. 3)**
3. Attach the bottom of the **(H)** Angle Stop Adaptor to the existing Angle Stop Valve. **(Fig. 4)**
4. Attach the braided tubing to the top of the **(H)** Angle Stop Adaptor. **(Fig. 5)**
5. Close side valve on **(H)** Angle Stop Adaptor **(Fig. 6)** and open cold water Angle Stop Valve to return water service to kitchen sink. **Check for leaks.**
6. Measure length of tubing needed to connect **(H)** Angle Stop Adaptor to **(E)** Inlet Fitting on **(B)** Quantum Head. Allow adequate tubing to avoid sharp turns.
7. Cut desired tubing length with a sharp knife or tube cutter at a 90° angle. Make sure the cut is flush or a leak may form.
8. Insert ends of tubing from **(H)** Angle Stop Adaptor to the **(B)** Quantum Head Inlet. **(Fig. 7)**
9. Push tubing all the way into fitting and gently pull to confirm a tight fit. **(See Figure 8 for how the John Guest Quick Connect fitting works)**



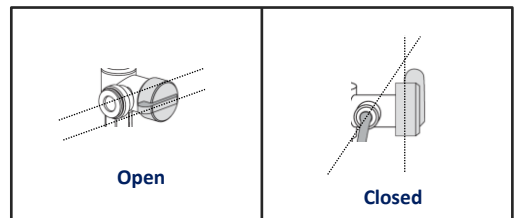
**Fig. 2**



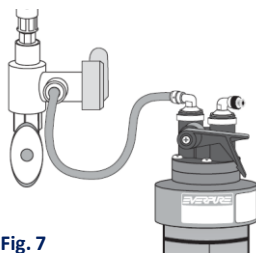
**Fig. 3**

**Fig. 4**

**Fig. 5**



**Fig. 6**



**Fig. 7**



**Fig. 8**



### Connecting Outlet

1. Measure length of tubing needed to connect **(D)** Outlet of the **(B)** Quantum Head, to the **(F)** Faucet connector installed on **(K)** Faucet. Allow adequate tubing to avoid sharp turns.
2. Cut desired tubing length with a sharp knife or tube cutter at a 90° angle. Make sure the cut is flush or a leak may form.
3. Insert one end of tubing into **(F)** Faucet Connector. **(Fig. 8)**
4. Insert other end of tubing into **(D)** Outlet of **(B)** Quantum Head. **(Fig. 9)**

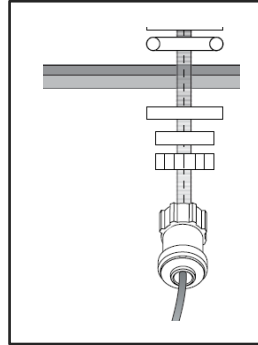


Fig. 8

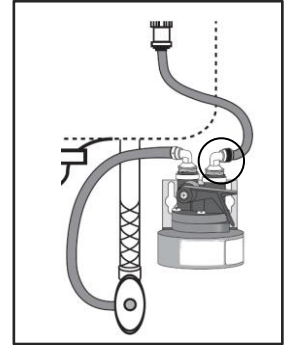


Fig. 9

### Installing Filter Cartridge

1. Remove plastic wrapping from new **(A)** Q1000 Filter Cartridge.
2. Align one of the extruded lugs at the top of the **(A)** cartridge, with the label on the **(B)** Quantum Head. **(Fig. 10)**
3. Push cartridge up into the head, you will feel a little click as the O-Rings sit into place.
4. Turn cartridge to the right about ¼" turn until it stops and locks into place.
5. Open up the **(H)** Angle Stop Adaptor to allow water to flow to the filter cartridge. **(Fig. 11)**
6. Turn faucet to the on position to allow water to flow at full force.
7. Allow the water to run for at least 5 minutes to purge the cartridge before using.

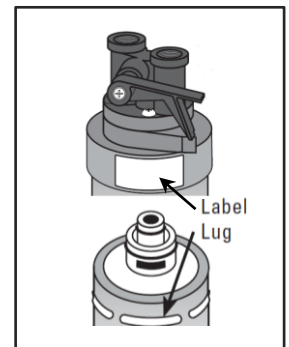


Fig. 10

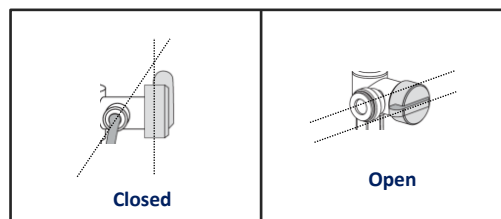


Fig. 11

For more information please feel free to contact us at 1-888-DANAMARK (326-2627)