

EVERPURE

► FROM PENTAIR WATER SOLUTIONS

FOODSERVICE CATALOG


foodservice.pentair.com



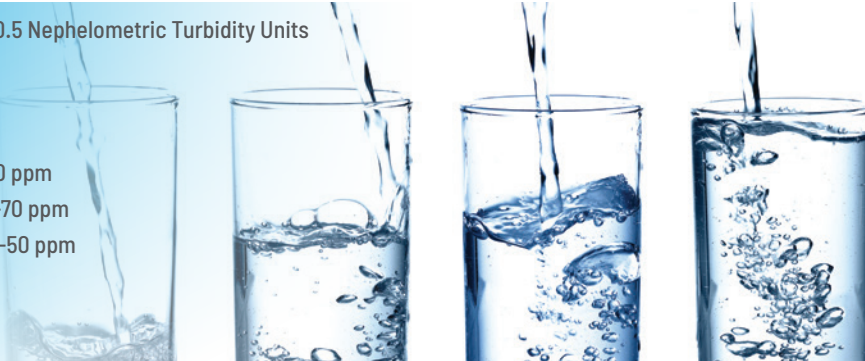
FOODSERVICE WATER SPECIFICATIONS

Quality water is essential for taste, brewing, carbonation, steaming, equipment protection and more. Water used to make coffee, espresso, fountain beverages, drinking water and ice must be potable under local requirements and USEPA drinking water standards. For best taste, we recommend that water quality meets the attributes outlined in the provided table for each specific foodservice application:


Attribute		Specification
COFFEE & ESPRESSO	Turbidity	Must not exceed 0.5 Nephelometric Turbidity Units
	Taste & Odor	Free from off-tastes and odors
	Total Chlorine	<0.05 ppm
	Iron	Not more than 0.10 ppm
	Total Alkalinity	Not more than 100 ppm
	Total Hardness	17 - 85 ppm
	Total Dissolved Solids	70 - 200 ppm
	pH	6.80 - 7.40
	Chlorides	Coffee: <50 & Espresso: <30 ppm
	Sodium	At or near 10 mg/l



FOUNTAIN & DRINKING WATER	Turbidity	Must not exceed 0.5 Nephelometric Turbidity Units
	Total Chlorine	<0.05 ppm
	Chloramines	<0.10
	Iron	<0.10 ppm
	Total Alkalinity	Not more than 100 ppm
	Total Hardness	Not more than 17-70 ppm
	Total Dissolved Solids	Not more than 25-50 ppm
	Chlorides	<25 ppm
	Silica	<12 ppm
	pH	6.80-7.40



ICE	Turbidity	Must not exceed 0.5 Nephelometric Turbidity Units
	Taste & Odor	Free from off-tastes and odors
	Total Chlorine	<0.05 ppm
	Iron	Not more than 0.10 ppm
	Total Alkalinity	<150 ppm
	Total Hardness	<85 ppm
	Total Dissolved Solids	70 - 200 ppm
	pH	6.80 - 7.40
	Chlorides	≤80 ppm



Water used on inlets to steamers or warewashers should meet quality requirements as specified by the equipment's manufacturer or as listed in the following table:

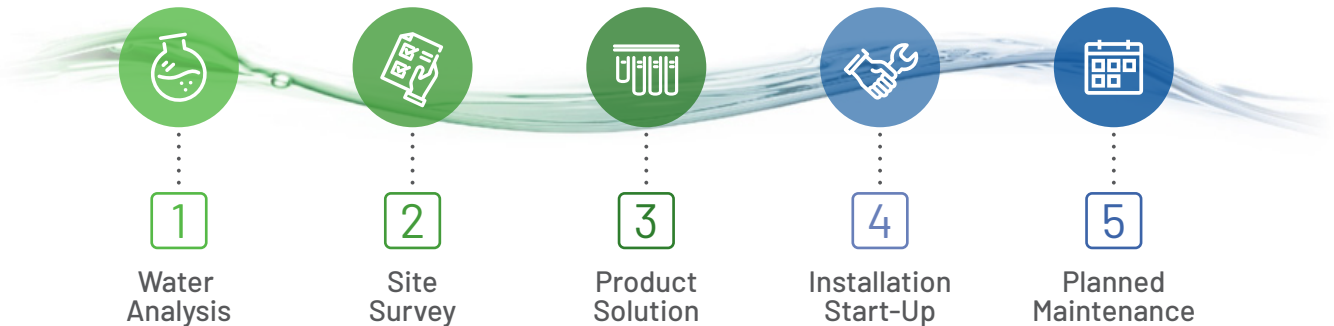
Attribute		Specification
STEAM	Turbidity	Must not exceed 0.5 Nephelometric Turbidity Units
	Silica <12ppm	Free from off-tastes and odors
	Total Chlorine	<0.05 ppm
	Iron	<0.10 ppm
	Total Alkalinity	Not more than 100 ppm
	Total Hardness	17 - 70 ppm
	Total Dissolved Solids	25 - 75 ppm
	pH	6.80 - 7.40
	Chlorides	≤25 ppm



WORRY-FREE WATER FOR EVERY STEP OF YOUR BUSINESS

5 essential steps to Total Water Management™

Pentair water filtration service supports your business



Make managing your water easier and more cost-effective than ever before. As your end-to-end custom water treatment solutions provider, you can count on our team of Pentair water experts and network of service providers to help support your water-using equipment needs.

Simply put – we offer water expertise and peace of mind.

It is essential to consider the impact water can have on your equipment, products, customers and success. The chemical characteristics of water affect the quality and consistency of beverages, operating efficiency and life of equipment. In many cases, water is the cause of expensive repairs, shortened equipment life and poor beverage quality.



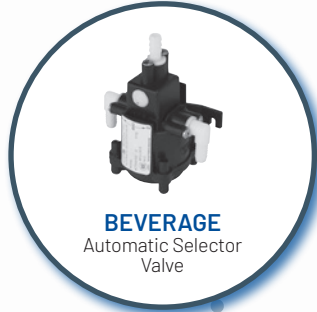
Contact a Pentair TWM expert
800.842.6193 | pentair.com/twm



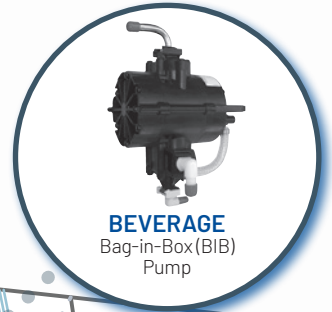
PENTAIR WATER SOLUTIONS



BEVERAGE
Air Vent



BEVERAGE
Automatic Selector
Valve



BEVERAGE
Bag-in-Box (BIB)
Pump



BEVERAGE
Replacement Electric
Delivery Pump



COMBINATION
High Flow CSR Triple-7FC
Filtration System



WATER BOOST
Medium Boost System



SOFTENING
9500E Twin Tank
Softener



FOUNTAIN
Coldrink® 2-MC²
Filtration System



BEVERAGE
Sold Out Switches



COFFEE
QL3-BH²
Filtration System



foodservice.pentair.com

WATER TREATMENT SOLUTIONS EVERYWHERE YOU NEED THEM



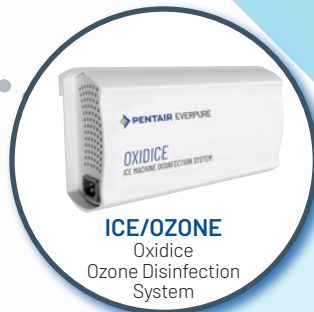
PROBLEM WATER
Everpure MRS-600HE-II
RO System



RO WATER STORAGE
R0mate
Water Tanks



WAREWASHING
Kleenware® HTS-11
Scale Control
System



ICE/OZONE
Oxidice
Ozone Disinfection
System



STEAM
OP350-50
RO System



ICE
Insurice® PF Twin i2000²
Filtration System



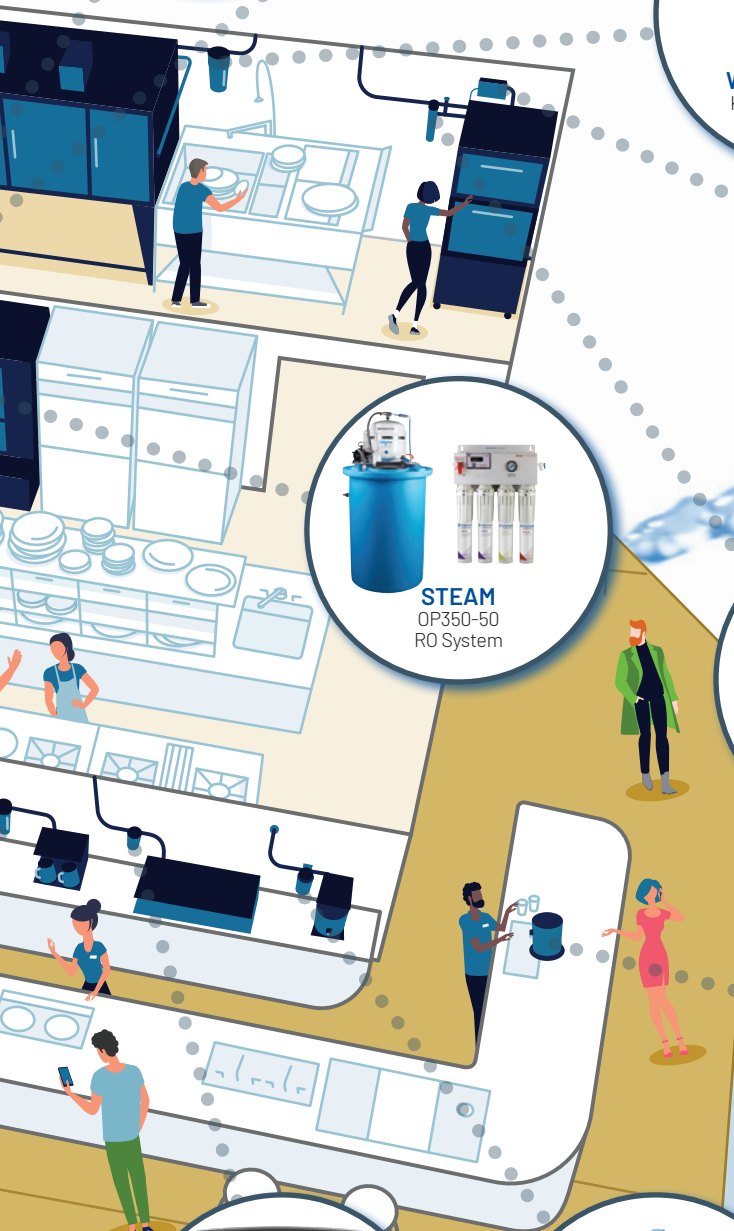
DRINKING WATER
4FC-L Cartridge/
QL3B Head



ESPRESSO
EZ-RO® 375 blended



ICED TEA
Claris™ Ultra 2000
Filtration System



Claris™ is a trademark of ACLARIS Water Innovations, GmbH.

WHAT'S IN YOUR WATER?

Knowing allows for targeted water filtration.

Evaluating your water quality is easy with the Pentair Everpure H₂O Express Test Kit

This kit provides a fast, easy-to-use process, guiding operators step-by-step to safeguard their foodservice equipment investments while maintaining product quality.

Test results include:

- pH
- LSI
- TDS
- Chlorides
- Alkalinity
- Bicarbonate
- Calcium
- Chloramines
- Hardness
- Sulfates
- Total Chlorine
- Free Chlorine
- Turbidity
- Silica
- Sodium



EVERPURE
▶ FROM PENTAIR WATER SOLUTIONS

pentair.com/watertesting



SAVOR CLEANER WATER

straight from your tap

Water can carry unwelcome chemicals and hidden contaminants that spell trouble for your equipment. With properly filtered water you can avoid these issues and deliver quality water while protecting your bottom line.



DRINKING WATER

FILTRATION SYSTEMS & CARTRIDGES



EVERPURE® DRINKING WATER SYSTEMS

Pentair Everpure offers a comprehensive selection of water filtration solutions to reduce unwanted or potentially harmful contaminants. This ensures that your customers can enjoy refreshing, great-tasting water.

Whether you require the capabilities for standard drinking water or seek advanced solutions with enhanced capacity to reduce lead and cysts, our extensive range of water filtration solutions can meet the requirements of your operation.

Performance

Part Number	Model Name	Gallons / Minute		Liters / Minute		Gallons	Liters	Micron Rating
		Flow Rate	Rated Capacity					
EV9275-70	QL2-0W200L System	0.50	1.89	480	1,817	0.5		
EV9259-70	QL3B 2FC5 System	1.5	5.67	6,000	22,712	5		
EV9259-72	QL3B 4FC5 System	2.5	5.67	15,000	56,781	5		
EV9259-73	QL3B 7FC5 System	2.5	5.67	25,000	94,635	5		



QL3B-2FC5



QL3B-4FC5

REPLACEMENT CARTRIDGES

Performance

Benefits

Rating

Part Number	Model Name	Pack Size	Gallons / Minute		Liters / Minute		Gallons	Liters	Micron Rating	Bacteriostatic Effects	Chlorine Reduction	Lead Reduction	Microplastics Reduction	Particulate Reduction†	Scale Inhibition†	Taste & Odor Reduction	NSF Standard 42	NSF Standard 53	NSF Standard 401
			Flow Rate	Rated Capacity															
EV9619-01	0W200L	1	0.5	1.9	480	1,816	0.5		•	•	•	•	•	•	•	•	•	•	•
EV9691-66	2FC5	1	1.5	5.67	6,000	22,712	5	•	•	•	•	•	•	•	•	•	•	•	•
EV9693-21	4FC5	1	2.5	9.46	15,000	56,781	5	•	•	•	•	•	•	•	•	•	•	•	•
EV9693-61	7FC5	1	2.5	9.46	25,000	94,635	5	•	•	•	•	•	•	•	•	•	•	•	•



QL3B-7FC5

* By mechanical means.

† See individual system specification sheets for performance claims and FIFRA registration information.

‡ As tested by Pentair.



Elevate Your Water Quality for coffee, espresso and tea

The chemical and physical properties of water have a significant impact on achieving the right body, balance, flavor, and finish of your beverages.





EVERPURE QC7I SYSTEMS

Part Number	Model Name	Performance			
		Gallons / Minute	Liters / Minute	Gallons	Liters
QC7I		Flow Rate		Capacity	
EV9202-61	QC7I Single 4FC5-S	2.5	9.46	15,000	56,781
EV9202-62	QC7I Twin 4FC5-S	5	18.93	30,000	113,562
EV9202-71	QC7I Single 7FC5-S	2.5	9.46	25,000	94,635
EV9202-72	QC7I Twin 7FC5-S	5	18.93	50,000	189,721
EV9202-81	QC7I Single 4FC-S*	2.5	9.46	15,000	56,781
EV9202-82	QC7I Twin 4FC-S*	5	18.93	30,000	113,562
EV9202-91	QC7I Single 7FC-S*	2.5	9.46	25,000	94,635
EV9202-92	QC7I Twin 7FC-S*	2.5	9.46	25,000	94,635



QC7I Single 4FC5-S



QC7I PF Twin 4FC-S

EVERPURE QC7I PF SYSTEMS

Part Number	Model Name	Performance			
		Gallons / Minute	Liters / Minute	Gallons	Liters
QC7I PF		Flow Rate		Rated Capacity	
EV9328-62	QC7I PF Twin 7FC5-S	5	18.93	50,000	189,721
EV9328-82	QC7I PF Twin 4FC-S	5	18.93	30,000	113,562
EV9328-91	QC7I PF Single 7FC-S	2.5	9.46	25,000	94,635
EV9328-92	QC7I PF Twin 7FC-S	5	18.93	50,000	189,271



QC7I PF Single 7FC-S

REPLACEMENT CARTRIDGES

Part Number	Model Name	Pack Size	Performance				Benefits				Rating		
			Gallons / Minute	Liters / Minute	Gallons	Liters	Micron Rating	Bacteriostatic Effects	Chlorine Reduction	Particulate Reduction†	Taste & Odor Reduction	NSF Standard 42	NSF Standard 53
EV9693-31	4FC5-S	1	2.5	9.48	15,000	56,775	5	•	•	•	•	•	•
EV9693-71	7FC5-S	1	—	—	75	284	5	•	•	•	•	•	•
EV9534-12	EC110‡	12	—	—	—	—	10			•			
EV9534-26	EC210¶	6	—	—	—	—	10			•			



QC7I Twin 7FC5-S

* Not shown.

† See individual system specification sheets for performance claims and FIFRA registration information.

‡ EC110 Prefilter used in systems with 10.0" [25.4 cm] prefilter bowl.

¶ EC210 Prefilter used in systems with 20.0" [50.8 cm] prefilter bowl.

EVERPURE QL AND QC7I SYSTEMS

Pentair Everpure offers advanced solutions for water softening and filtration, designed to reduce specific contaminants and odors found in water. With the right blend of minerals and properly filtered water, you can help preserve the integrity of your beverages while increasing the efficiency and lifespan of your equipment.

Everpure Filtrations Systems

- Reduce sediment, chlorine taste & odors
- Contains 0.5-micron precoat filtration by mechanical means*
- Scale control as tested by Pentair
- NSF/ANSI Standard 53 certified to reduce cysts such as *Cryptosporidium* and *Giardia* by mechanical means*
- Easy, quick cartridge replacement
- Effectively inhibits bacteria growth on filter media that can decrease product life* with Micro-Pure II filtration
- Certified under NSF/ANSI standards 42, 53 and 401*

Part Number	Model Name	Brewer Capacity Over 6-Months				Performance				Rating						
		< 0.5 gpm	0.5 - 1.0 gpm	1 - 1.67 gpm	> 1.67 gpm	3,000 1/2 gal pots (11,000 2 L pots)	6,000 1/2 gal pots (23,000 2 L pots)	18,000 1/2 gal pots (68,000 2 L pots)	Gallons / Minute	Liters / Minute	Gallons	Liters	Micron Rating	NSF Standard 42	NSF Standard 53	NSF Standard 401
						Flow Rate		Rated Capacity								
EV9275-60	QL2-OCS ²	•				•			0.50	1.89	1,500	5,677	0.5	•	•	•
EV9272-00	QL3-BH ²		•				•		0.50	1.89	3,000	11,355	0.5	•	•	•
EV9272-41 (head) EV9613-21 (cartridge)	QC7I-MH ²			•			•		1.67	6.32	9,000	34,065	0.5	•	•	•
EV9272-22 (head) EV9613-21 (cartridge)	QC7I Twin-MH ²				•				3.34	12.84	18,000	68,100	0.5	•	•	•



QL2-OCS²



QL3-BH²



QC7I Single-MH²

REPLACEMENT CARTRIDGES

Part Number	Model Name	Pack Size	Performance				Benefits							Rating				
			Gallons / Minute	Liters / Minute	Gallons	Liters	Micron Rating	Asbestos Reduction	Bacteriostatic Effects	Chlorine Reduction	Cyst Reduction*	Microplastics Reduction	Particulate Reduction*†	Scale Inhibition	Taste & Odor Reduction	NSF Standard 42	NSF Standard 53	NSF Standard 401
	BH ²	1	0.5	1.89	3,000	11,355	0.2*		•	•		•	•	•	•	•	•	•
	MH ²	1	1.67	6.3	9,000	34,000	0.2*		•	•	•	•	•	•	•	•	•	•
	OCS ²	1	0.5	1.89	1,500	5,678	0.2*	•	•	•	•	•	•		•	•	•	•

EPA Est. No. 002623-IL-002

*See individual system specification sheets for performance claims and FIFRA registration information.

† By mechanical means.





EVERPURE ESO SYSTEMS

- Salt-less ion exchange provides excellent scale prevention
- Integrated carbon filtration helps reduce off-tastes and odor in beverages
- Fixed blending of 40% filtered water with 60% softened water to optimize mineral content

ESO Filtration Heads & Cartridges

Part Numbers	Model Name	Performance	
		Flow Rate Gallons / Liters	Capacity Gallons / Grains
EV9272-22 + EV9607-25	QC7I Twin-ESO ⁷	1.00 / 3.79	10,600
EV9272-23 + EV9607-25	QC7I Triple-ESO ⁷	1.50 / 5.68	15,900
EV9272-41 + EV9607-10	QC7I Single-ESO ⁶	0.50 / 1.89	4,100
EV9272-41 + EV9607-25	QC7I Single-ESO ⁷	0.50 / 1.89	5,300



QC7I Single-ESO⁶



QC7I Single-ESO⁷

ESO Cartridge Capacity

Incoming Water Hardness (grains/gallon)	ESO ⁶ (EV9607-10)			ESO ⁷ (EV9607-25)		
	Volume to Changeout (gallons)	Number of 8-oz Cups	Number of 2-oz Shots	Volume to Changeout (gallons)	Number of 8-oz Cups	Number of 2-oz Shots
3	1,363	21,809	87,236	1,769	28,300	109,200
4	1,022	16,357	65,428	1,327	21,225	84,900
6	682	10,905	43,620	884	14,150	56,600
8	511	8,178	32,712	663	10,613	42,452
10	409	6,543	26,172	531	8,490	33,960
12	341	5,452	21,808	442	7,075	28,300
14	292	4,673	18,692	379	6,064	24,256
16	256	4,089	16,356	332	5,306	21,224
18	227	3,635	14,540	295	4,717	18,868
20	204	3,271	13,084	265	4,245	16,980
22	186	2,974	11,896	241	3,859	15,436
24	170	2,726	10,904	221	3,538	14,152



QC7I Twin-ESO⁷



QC7I Triple-ESO⁷

REPLACEMENT CARTRIDGES

ESO Espresso Sizing

Grains of Water Hardness	Volume (shots per day)		
	Low (<150 spd)	Medium (150 - 300 spd)	High (301 - 500 spd)
8	ESO ⁷ Single	ESO ⁷ Twin	ESO ⁷ Triple
12	ESO ⁷ Twin	ESO ⁷ Triple	—

Part Number	Model Name	Pack Size	Performance		Gallons	Benefits	
			Gallons / Minute	Liters / Minute		pH Buffering	Softening
EV9607-1	ESO ⁶	6	0.5	1.9	470 @ 150 ppm*	•	•
EV9607-25	ESO ⁷	6	0.5	1.9	600 @ 150 ppm*	•	•

*See specification sheet for capacities on other ppm levels. The above specifications refer to single cartridge systems only. For multiple systems, refer to the cartridge Performance Data Sheet

EVERPURE MRS SERIES RO SYSTEMS

Enhance your flavor profile with the high-capacity MRS RO systems for your brewing operation. These systems incorporate dual post-filtration technology designed to help eliminate up to 90% of the total dissolved solids responsible for scale buildup in your equipment. These features help prevent off-tastes and odors while maximizing operational efficiency and elevating your beverages.

- 100 to 350 gallons (378 to 1,325 L) per day of permeate water
- Easy, quick cartridge change-outs
- Scale reduction

Part Number	Model Name
EV9970-73	MRS-100BL*
EV9970-76	MRS-225BL*
EV9970-20	MRS-350BL*
EV9973-63	MRS-100CC-BL
EV9970-19	MRS-225CC-BL
EV9973-65	MRS-350CC-BL
EV3149-52	Power Supply Upgrade Kit
EV9795-81	Optional 10" Prefilter Kit*

All powered models available in 100-240 VAC / 50-60 Hz switchable power supply. Contact Pentair Everpure for details.

Up to 100 & 225 GPD

MRS-100BL and MRS-225BL (plus CC-BL)

MRS-225CC-BL shown. Order tank separately.

Note:
CC-BL model includes calcite feeder cartridge which adds minerals back into water.



Up to 350 GPD

MRS-350BL (plus CC-BL)

MRS-350 CC-BL shown with optional prefilter. Order tank separately.

Note:
CC-BL model includes calcite feeder cartridge which adds minerals back into water; BL model includes blend valve and submicron filter[†] cartridge which allows setting a blend of filtered and RO water.



REPLACEMENT CARTRIDGES

Part Number	Model Name	Pack Size	Performance		Used In		Benefits														
			Gallons / Minute	Liters / Minute	Gallons	Liters	MRS-225	MRS-100BL	MRS-225-BL	MRS-350BL	MRS-100CC-BL	MRS-225CC-BL	MRS-350CC-BL	Chlorine Reduction	Mineral Addition	Particulate	Scale Reduction	Taste & Odor Reduction	TDS Reduction [†]	Turbidity	
EV9607-41	6TO-BW	1	1.5	5.74	24,000	90,850	•	•	•												
EV9627-04	7TO-BW	1	1.5	5.74	30,000	113,550				•											
EV9627-05	7CC-BW	1	0.5	1.9	—	—															
EV9627-11	MR-100	1	daily production rate 100	378	—	—		•			•										
EV9627-03	MR-225	1	daily production rate 225	852	—	—	•		•			•									
EV9627-07	MR-350	1	daily production rate 350	4,658	—	—				•			•								
EV9668-24	BW-4400	1	0.5	1.9	12,000			•	•	•	•	•	•	•	•	•	•	•	•	•	•

* Not shown.

† As tested by Pentair.

‡ See individual system specification sheets for performance claims.





EVERPURE EZ-RO® SYSTEMS (BLENDED)

Experience the space-saving, compact design of the EZ-RO reverse osmosis systems to reduce contaminants and safeguard your foodservice equipment. The high-efficiency RO systems, featuring integrated blending technology, reintroduce essential calcium and magnesium, to help elevate beverage quality and ensure consistent, quality water.

- All-in-one system includes complete installation kit
- Convention access port
- Modular construction for versatile placement
- Multiple options and tank sizes
- RO membrane saves up to two times more water than standard RO membranes.*
- EZ-RO 375/10G is certified under CSA B483.1 and NSF/ANSI Standard 58†

Part Number	Model Name	Performance		Features												Rating		
		Production Rate Gpd	Production Rate Lpd	Blended Mineral Addition	3/8" Push-to-connect inlet	1/2" OD Push-to-connect outlet	3/4" garden hose connection included	Electrical Connection Grounded T15 VAC, 2 Amp	2-Gallon hydro pneumatic tank	5-Gallon hydro pneumatic tank	10-Gallon hydro pneumatic tank	16-Gallon hydro pneumatic tank	16-Gallon atmospheric tank	30-Gallon atmospheric tank	50-Gallon atmospheric tank	NSF Standard 58 (TDS reduction)	CSA B483.1 (TDS reduction)	
EV9975-59	EZ-RO 200/2G-BL	200	757	•	•	•			•								•	•
EV9975-60	EZ-RO 200/5G-BL	200	757	•	•	•				•							•	•
EV9975-61	EZ-RO 200/10G-BL	200	757	•	•	•					•						•	•
EV9975-62	EZ-RO 200/16G-BL	200	757	•	•	•					•						•	•
EV9975-63	EZ-RO 375/2G-BL	375	1,419	•	•	•			•								•	•
EV9975-64	EZ-RO 375/5G-BL	375	1,419	•	•	•				•							•	•
EV9975-65	EZ-RO 375/10G-BL	375	1,419	•	•	•					•						•	•
EV9975-66	EZ-RO 375/16G-BL	375	1,419	•	•	•					•						•	•
EV9975-73	EZ-RO 375/16ATM-BL	375	1,419	•	•	•	•	•						•			•	•
EV9975-74	EZ-RO 375/30ATM-BL	375	1,419	•	•	•	•	•						•			•	•
EV9975-75	EZ-RO 375/50ATM-BL	375	1,419	•	•	•	•	•						•			•	•
EV9975-76	EZ-RO 650/16ATM-BL	650	2,460	•	•	•	•	•						•			•	•
EV9975-77	EZ-RO 650/30ATM-BL	650	2,460	•	•	•	•	•						•			•	•
EV9975-78	EZ-RO 650/50ATM-BL	650	2,460	•	•	•	•	•						•			•	•



EZ-RO 200 Blended



EZ-RO 375 Blended



EZ-RO 650 Blended

REPLACEMENT CARTRIDGES

Part Number	Model Name	Pack Size	Performance		Used In			Benefits							Rating					
			Gallons / Minute	Liters / Minute	Gallons	Liters	Micron Rating	EZ-RO 200	EZ-RO 375	EZ-RO 650	Bacteriostatic Effects	Chlorine Reduction	Mineral Addition	Particulate Reduction†	pH Stabilization	Scale Inhibition	Taste & Odor Reduction	TDS Reduction	NSF Standard 42	CSA B483.1
EV9627-80	4CM	1	0.5	1.9	-	-	-	•	•				•		•					
EV9627-85	7CM	1	0.5	1.9	-	-	-			•				•						
EV9628-92	EZ-200	1	-	-	-	-	-	•							•					•
EV9628-93	EZ-375	1	-	-	-	-	-		•						•					•
EV9628-94	EZ-650	1	-	-	-	-	-			•					•					•
EV9693-31	4FC5-S	1	2.5	9.46	15,000	56,781	5.0	•	•	•	•	•	•	•	•	•	•	•	•	•
EV9693-61	7FC5-S	1	2.5	9.5	25,000	94,635	5.0		•	•	•	•	•	•	•	•	•	•	•	•

For more information on EZ-RO systems and tanks visit:
pentair.com/ez-ro

* Up to 50% water recovery compared to standard RO systems with up to 25% recovery as tested by Pentair.
 † See individual system specification sheets for performance claims.

EVERPURE MRS-600HE RO SYSTEMS

With properly filtered water and the right blend of minerals, you'll help deliver consistent beverage results with every brew. These high-efficiency systems feature reverse osmosis and blended quality water to help reduce odors and total dissolved solids (TDS) from the incoming tap water.

- Reduces limescale build-up that can cause excessive machine downtime and increased maintenance costs
- Reduces sediment, chlorine taste and odors
- On board storage tank provides ample reserve capacity
- Certified under NSF/ANSI Standard 58 to reduce TDS (MRS-600-II)

UP TO 600 GPD

Part Number	Model Name
Coffee	
EV9970-38	MRS-600HE System
EV9970-54	MRS-600HE-II System



MRS-600HE†



MRS-600HE-II

REPLACEMENT CARTRIDGES

Part Number	Model Name	Pack Size	Performance				Micron Rating	Used In		Benefits						Rating			
			Gallons / Minute	Liters / Minute	Gallons	Liters		MRS-600HE	MRS-600HE-II	Bacteriostatic Effects	Chlorine Reduction	Cyst Reduction [§]	Microplastics Reduction [§]	Particulate Reduction [§]	Scale Inhibition	Taste & Odor Reduction	NSF Standard 42	NSF Standard 53	NSF Standard 401
EV9612-56	MC ²	1	1.67	6.3	9,000	34,000	0.2*		•	•	•	•	•	•	•	•	•	•	•
EV9627-15	7F	1	2.5	9.46	—	—	5		•		•			•		•			
EV9627-15	GS-215RO-H	1	—	—	—	—	—	•											
EV9627-14	2SR-BW	1	—	—	—	—	—	•							•				
EV9627-16	7FS-BW*	1	2.5	9.5	30,000	113,560	5.0		•		•			•	•	•			
EV9627-13	MR-600	1	—	—	—	—	—	•	•										
EV9627-22	MR-600F	1	—	—	—	—	—		•										
EV9627-23	MR-600-1	1	—	—	—	—	—	•											

System

Replacement Parts for MRS-600HE and MRS-600HE-II Systems		MRS-600HE	MRS-600HE-II	Quantity per System
EV3128-08	Solenoid Valve: 1/4" NPT metal body type	•	•	2
EV3128-18	Pump: Double Head	•	—	1
EV3131-51	Pump: Permeate	—	•	1
EV3131-52	Pump: Inlet	•	•	1
EV3149-07	Controller with Transducer Input: Systems manufactured 5/2014 to present	•	•	1
EV9627-15	GS-215RO-H In-Line Filter Kit	•	—	1
EV9970-00	MRS-600 HE-II Second RO Cart Kit	—	•	1
EV9969-00	MRS-600 HE-II Second RO Membrane Kit - for new system installations	—	•	1
41-230-60	Replacement Bladder Only: 1 Pack	•	—	1

For proper tank sizing, please contact your distributor or Pentair Everpure representative.

Note: Contact factory for 230/240 VAC options.

* Not performance tested or certified by NSF.

† Prefiltration not included. Additional equipment may be needed unless prefiltration is already installed.

‡ See individual system specification sheets

for performance claims and FIFRA registration information.

§ By mechanical means.





EVERPURE BWS BLENDED REVERSE OSMOSIS SYSTEMS

The BWS systems tackle issues linked to water impurities like total dissolved solids (TDS), chlorides, limescale buildup and corrosion. They incorporate a mineral addition and a precision blending valve that effectively mixes filtered water with mineral-enriched water to deliver great-tasting beverages while safeguarding your equipment.

- Prefilter to help reduce chlorine taste & odors
- Easy, Qwik-Twist cartridge replacement
- Integrated pressure gauge for visual monitoring of operational pressure
- Digital TDS meter for convenient, push-button monitoring of membrane performance and optimized water quality

Part Number	Model	Type	Storage Tank Volume†		Rated Capacity*		Delivery Flow Rate	
			Gallons	Liters	Gal/day	L/day	Gpm	Lpm
164-14376	BWS350/50 HF†	Blended Water & Mineral Addition	50	189	400	1,512	up to 10	up to 38
164-14377	BWS350/50 230V/50†	Blended Water & Mineral Addition	50	189	400	1,512	up to 10	up to 38
164-15545	BWS1500/50†	Blended Water & Mineral Addition	50	189	1,500	5,670	up to 4	up to 15
164-15550	BWS1500/50 HF	Mineral Addition & Blend & High Flow RP	50	189	1,500	5,670	up to 10	up to 38
164-15576	BWS1500/175 HF PLUS†	Mineral Addition & Blend & High Flow RP	175	662	1,500	5,670	up to 10	up to 38
164-15581	BWS1500/300 HF PLUS	Mineral Addition & Blend & High Flow RP	175	662	1,500	5,670	up to 10	up to 38



BWS-350/50 HF



BWS-1500-300 HF

REPLACEMENT CARTRIDGES

Part Number	Model Name	Pack Size	Performance		Gallons	Liters	Micron Rating	Used In		Benefits	
			Gallons / Minute	Liters / Minute				BWS-350	BWS1500	Mineral Addition	Particulate Reduction ^{¶§}
300-05828	CTO-Q10	1	1.5	5.7	15,000	56,775	0.5	•		•	
204-44021	AMS-4021XLE	1	—	—	1,200*	4,542*	—		•		•
204-52810	AMS-QT10	1	—	—	75*	284*	—	•			•
204-52820	AMS-QT15	1	—	—	175*	662*	—				•
204-53040	AMS-QT	1	—	—	350*	1,325*	—				•
300-05830	CTO-Q	1	2.25	8.5	22,500	85,162	0.5		•	•	
300-05855	MA-Q15	1	—	—	—	—	—	•	•	•	

* Gallons per day at 77°F at 60 PSI. Production will vary depending on available water pressure and water temperature.

† Delivery pressure and flow will vary depending on water level in tank.

‡ Not Shown

¶ See individual system specification sheets for performance claims and FIFRA registration information.

§ By mechanical means

EVERPURE SX2 DUAL-HOUSING SYSTEMS

These innovative dual-housed systems, feature ScaleX2 scale inhibition technology, a key element in preserving your valuable foodservice equipment and delivering optimum beverages.

- Filters sediment and chlorine taste & odor
- Includes mounting bracket, hardware, pressure gauge and inlet shutoff valve
- Easily plumbs to existing system
- Certified under NSF/ANSI Standard 42



SX2-21 System



SX2-22 System

Part Number	Model Name	Performance				Benefits				Rating
		Gallons / Minute	Liters / Minute	Gallons	Liters	Chlorine Reduction	Particulate Reduction	Scale Inhibition	Taste & Odor Reduction	NSF Standard 42
		Flow Rate		Rated Capacity						
160-00350	SX2-21 Twin System 10" with ScaleX2	1.5	5.7	15,000	56,775	•	•	•	•	•
160-50142	SX2-22 Twin System 20" with ScaleX2	3.0	11.4	30,000	113,550	•	•	•	•	•

REPLACEMENT CARTRIDGES

Part Number	Model Name	Pack Size	Performance				Benefits		
			Gallons / Minute	Liters / Minute	Gallons	Liters	Micron Rating	Chlorine Reduction	Taste & Odor Reduction
			Flow Rate		Rated Capacity				
252-00210	CTO-10*	1	1.5	5.7	15,000	56,775	5	•	•
252-00220	CTO-20*	1	3.0	8.5	30,000	113,550	5	•	•
252-60205	SCLX2-1	1	1.5	5.7	—	—	—		
252-60210	SCLXC-2	1	2.5	9.5	—	—	—		

*Also available in 6-packs



CTO-10

CTO-20

SCLX2-2





Everpure® Claris™ Systems

Everpure Claris systems are engineered to help eliminate a range of waterborne contaminants and minimize operation costs.

The Everpure® Claris™ series works to reduce any impurities that can contribute to unwanted tastes and odors elevating your beverages while safeguarding equipment. Using innovative water purification and softening technology, they seamlessly integrate hardness reduction, mineral stabilization and guard against corrosion. This is achieved by regulating a low level of carbonic acid in the water, ensuring optimal performance.

Applications

- Drip coffee
- Espresso
- Coffee machines
- Direct injection combi ovens

Benefits of Claris Systems

- Optimal use of ingredients allows for best appearance and taste of hot food and beverages
- Scale reduction that can help prevent downtime and maintenance costs
- Corrosion protection from mineral-induced contaminants helps extend life of equipment
- Smaller footprint allows flexibility in limited spaces



Claris™ is a trademark of ACLARIS Water Innovations, GmbH

* See individual system specification sheets for performance claims.

EVERPURE CLARIS SYSTEMS

Cartridges

The Claris cartridge series offers advanced water filtration and softening solutions that effectively combine hardness reduction, mineral stabilization and corrosion inhibition.

- Service flow rate: 0.5 - 1.0 gpm (2.0 - 3.3 Lpm)
- Rated capacity: 400 - 85,000 gallons (1,514 - 321,760 L)
- Easy, quick cartridge replacement
- Certified under NSF/ANSI Standard 42



Claris Gen 2 Head
3/8" BSP



Claris Gen 2 Head
3/8" NPT



Claris Gen 2 Head
3/8" QCF



Claris Ultra 500



Claris Ultra 1500



Claris Prime

Claris Filter Heads

- DUOBLEND technology
- 3/8-inch QCF
- Built-in flush port
- Corrosion-resistant hardware
- Quick and easy adjustable bypass

Claris Espresso Sizing

Volume (shots per day)

Grains of Water Hardness	Low (<150 spd)	Medium (150 - 300 spd)	High (301 - 500 spd)
8	Claris Ultra 500	Claris Ultra 1000	Claris Ultra 1500
12	Claris Ultra 1000	Claris Ultra 1500	Claris Ultra 2000 or RO

Softening / Filtration

Part Number	Model Name	Performance		Features		
		Flow Rate Gallons / Liters	Rated Capacity* Gallons / Liters	Auto Shutoff	Mounting Bracket	Connection
EV4339-32	Claris Flow Meter 700 Lpm [¶]	3.34 / 12.84	18,000 / 68,100			3/8" BSP
EV4339-40	Claris Test Kit [†]	—	—	—	—	—
EV4339-52	Claris Hose 10CM, 3/8" x 1/2" [‡]	—	—	—	—	—
EV4339-80	Claris Ultra 250 [†]	0.50 / 189	660 / 2,500	—	—	—
EV4339-81	Claris Ultra 500 [†]	0.50 / 189	1,109 / 4,200	—	—	—
EV4339-82	Claris Ultra 1000 [†]	0.50 / 189	2,245 / 8,500	—	—	—
EV4339-83	Claris Ultra 1500 [†]	1.00 / 3.79	3,196 / 12,100	—	—	—
EV4339-84	Claris Ultra 2000 [†]	1.00 / 3.79	5,283 / 20,000	—	—	—
EV4339-86	Claris Prime	1.00 / 3.79	557 [§] / 2,110 [§]	—	—	—
EV4339-90	Claris Gen 2 Head	—	—	•	•	3/8" BSP
EV4339-91	Claris Gen 2 Head	—	—	•	•	3/8" NPT
EV4339-92	Claris Gen 2 Head	—	—	•	•	3/8" QCF

* Based on 10 grains of hardness and a bypass setting of 4".

† Cartridge and head sold separately.

‡ Not shown.

§ For direct injection combi ovens; capacity based on influent water TDS of ppm, hardness of 180 ppm and chloride 60 ppm with standard bypass settings.

¶ For espresso; capacity based on influent water TDS of ppm, hardness of 180 ppm and chloride 60 ppm with standard bypass settings.

¶ Requires BSP Head EV4339-90.



HOT BEVERAGE BREWING WITH BENEFITS

Give customers a feel-good state of mind with the perfect cup of coffee, espresso or tea. With properly filtered water and the right blend of minerals, you'll help deliver that perfect aroma and taste your customers will appreciate— all while protecting your equipment.



PROTECT YOUR EQUIPMENT

Reduces scale and buildup to help extend the life of your appliances.



REMINERALIZE FOR FLAVOR EXTRACTION

Enhance coffee and tea extraction for improved taste.



PRESERVE MAGIC AROMA

Reduces chlorine safely so your drinks smell as good as they taste.

OPTIMAL WATER QUALITY FOR COFFEE AND ESPRESSO

Without question, the chemical and physical properties of water have a significant impact on achieving the right body, balance, flavor, and finish of coffee and espresso.

- Low TDS water causes too many coffee oils to be released, resulting in a bitter, oily flavor.
- High TDS water causes too few coffee solids and tea flavonoids to be released, resulting in weak flavor.
- A balanced amount, not too much or too little, of calcium carbonate and alkalinity plays an essential role in coffee extraction during brewing.
- High chloride and sulfate levels are detrimental to coffee balance and flavor and can be corrosive, even to stainless steel equipment.

The Statistics & Standards Committee of the Specialty Coffee Association has determined the following standards for the water used to brew specialty coffee. For a superior quality extraction of coffee solids, the brewing water should have these characteristics:†



Calcium Hardness
50-175 ppm CaCO₃



pH
6-8



Alkalinity
40 ppm



Odor
Clean/Fresh/
Odor Free



Chlorine
None



Chloride
50 ppm

† These are only general guidelines. For recommendations and requirements specific to your equipment, reference the equipment manual provided by the manufacturer.



Enjoy Every Sip of your fountain drink

Water is the secret ingredient in fountain beverages, and its chemical and physical properties create the taste balance and flavor pop.



FOUNTAIN BEVERAGE

WATER FILTRATION SYSTEMS

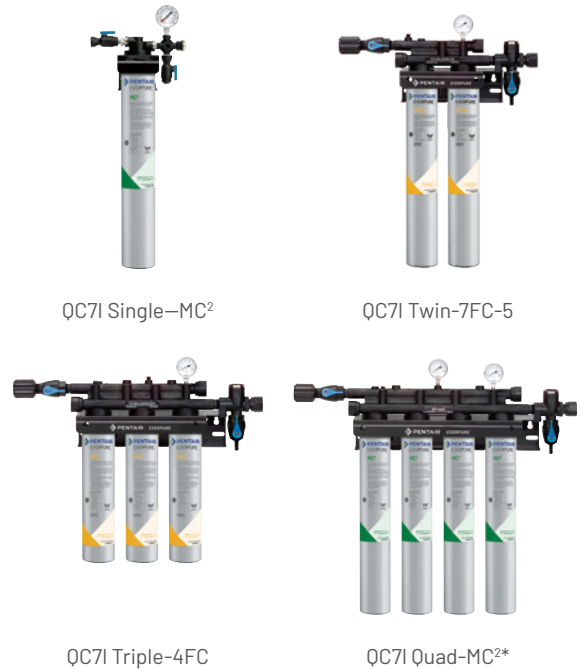


The right water filtration equipment is crucial in sustaining water standards for maintaining a consistently high-quality flavor profile. Pentair offers a comprehensive line of solutions engineered with that in mind that deliver great-tasting beverages, all while protecting equipment.

- Proprietary Fibredyne II media technology
- Manifold features an inlet water shutoff valve with an optional sediment prefilter, flushing valve and water pressure gauge(s)
- Reduces sediment, chloramines, chlorine taste & odor
- Easy, quick-change cartridge replacement
- Scale control as tested by Pentair
- Certified under NSF/ANSI Standards 42 and 53

EVERPURE QC7I SYSTEMS

Part Number	Model Name	Performance			
		Gallons / Minute	Liters / Minute	Gallons	Liters
QC7I		Flow Rate		Capacity	
EV9202-21	QC7I Single 4FC5*	2.5	9.46	15,000	56,781
EV9202-22	QC7I Twin 4FC5	5.0	18.93	30,000	170,344
EV9202-23	QC7I Triple 4FC5*	7.5	28.39	45,000	170,344
EV9202-31	QC7I Single 7FC5*	2.5	9.46	25,000	94,635
EV9202-41	QC7I Single 4FC*	2.5	9.46	15,000	57,781
EV9202-42	QC7I Twin 4FC*	5.0	18.93	30,000	113,562
EV9202-43	QC7I Triple 4FC*	7.5	28.39	45,000	170,344
EV9202-51	QC7I Single 7FC*	2.5	9.46	25,000	94,635
EV9202-52	QC7I Twin 7FC*	5.0	18.93	50,000	189,271
EV9202-32	QC7I Twin 7FC5*	5.0	18.93	50,000	189,271
EV9275-01	QC7I Single-MC ²	1.67	6.32	9,000	34,065
EV9275-02	QC7I Twin-MC ² *	3.34	12.64	18,000	68,137
EV9275-03	QC7I Triple-MC ²	5.0	18.93	27,000	102,206
EV9336-11 head (1) EV9612-56 cartridge (4)	QC7I Quad-MC ² †¶	6.68	25.29	36,000	136,275



REPLACEMENT CARTRIDGES

Part Number	Model Name	Pack Size	Performance				Micron Rating	Benefits										Rating				
			Gallons / Minute	Liters / Minute	Gallons	Liters		Asbestos Reduction	Bacteriostatic Effects	Chlorine Reduction	Cyst Reduction††	Lead Reduction	Microplastics Reduction	Particulate Reduction††	Scale Inhibition	Taste & Odor Reduction	Turbidity Reduction	NSF Standard 42	NSF Standard 53	NSF Standard 401		
			Flow Rate		Rated Capacity																	
EV9612-56	MC ²	1	1.67	6.3	9,000	34,000	0.2†	•	•	•	•	•	•	•	•	•	•	•	•	•	•	•
EV9692-21	4FC	1	2.50	9.46	15,000	56,781	0.5		•	•	•	•	•	•	•	•	•	•	•	•	•	•
EV9692-61	7FC	1	2.50	9.46	25,000	94,635	0.5		•	•	•	•	•	•	•	•	•	•	•	•	•	•
EV9202-21	4FC5	1	2.5	9.46	15,000	56,781			•	•												
EV9202-31	7FC5	1	2.5	9.46	25,000	94,635			•	•												

Notes:
 * Not shown
 † See individual system specification sheets for performance claims and FIFRA registration information.
 ‡ As tested by Pentair.
 ¶ Head and cartridges sold separately

EVERPURE QC7I PF (PREFILTER) SYSTEMS

Each model includes an integrated prefilter designed to ensure consistent performance even with high turbidity supplies supporting long-lasting functionality.

Part Number	Model Name	Performance			
		Gallons / Minute	Liters / Minute	Gallons	Liters
QC7I PF		Flow Rate		Capacity	
EV9327-82	QC7I PF Twin 7FC5	5.0	18.93	50,000	189,271
EV9328-32	QC7I PF Twin 4FC	5.0	18.93	30,000	136,382
EV9328-51	QC7I PF Single 7FC	2.5	9.46	25,000	94,635
EV9328-52	QC7I PF Twin 7FC	5.0	18.93	50,000	189,271



QC7I PF Single-7FC



QC7I PF Twin-4FC

REPLACEMENT CARTRIDGES

Part Number	Model Name	Pack Size	Performance				Micron Rating	Benefits							Rating											
			Gallons / Minute	Liters / Minute	Gallons	Liters		Bacteriostatic Effects	Chlorine Reduction	Cyst Reduction*†	Lead Reduction	Microplastics Reduction	Particulate Reduction*†	Scale Inhibition	Taste & Odor Reduction	Turbidity Reduction	NSF Standard 42	NSF Standard 53	NSF Standard 401							
			Flow Rate		Rated Capacity																					
EV9692-21	4FC	1	2.50	9.46	15,000	56,781	0.5	•	•	•	•	•	•	•	•	•	•	•	•	•	•	•	•	•	•	
EV9692-61	7FC	1	2.50	9.46	25,000	94,635	0.5	•	•	•	•	•	•	•	•	•	•	•	•	•	•	•	•	•	•	•
EV9202-21	4FC5	1	2.5	9.46	15,000	56,781		•	•					•		•						•				
EV9202-31	7FC5	1	2.5	9.46	25,000	94,635		•	•					•		•						•				
EV9534-12	EC110†	12	–	–	–	–	10																			
EV9534-26	EC210¶	6	–	–	–	–	10																			

Notes:

* See individual system specification sheets for performance claims and FIFRA registration information.

† By mechanical means.

‡ EC110 Prefilter used in systems with 10.0" [25.4 cm] prefilter bowl.

¶ EC210 Prefilter used in systems with 20.0" [50.8 cm] prefilter bowl.



FOUNTAIN BEVERAGE

STANDARD FILTRATION



EVERPURE COLDRINK® SYSTEMS

Each model includes an integrated prefilter designed to ensure consistent performance even with high turbidity supplies supporting long-lasting functionality.

Part Number	Model Name	Performance			
		Gallons / Minute	Liters / Minute	Gallons	Liters
Coldrink		Flow Rate	Rated Capacity		
EV9328-01	Coldrink 1-MC ²	1.67	6.32	9,000	34,069
EV9328-02	Coldrink 2-MC ^{2*}	3.34	12.64	18,000	68,100
EV9328-03	Coldrink 3-MC ^{2*}	5	18.96	27,000	102,206
EV9328-73	Coldrink 3-7FC	7.50	28.39	75,000	283,906
EV9328-44	Coldrink 4-4FC	10	37.85	60,000	227,124
EV9328-74	Coldrink 4-7FC	10	37.85	100,000	378,541

Note: Coldrink-FC systems contain integrated 10.0" [25.4 cm] or 20.0" [50.8 cm] coarse prefilter, depending on model.



Coldrink 4-4FC



Coldrink 3-7FC

REPLACEMENT CARTRIDGES

Part Number	Model Name	Pack Size	Performance				Benefits											Rating					
			Gallons / Minute	Liters / Minute	Gallons	Liters	Micron Rating	Asbestos Reduction	Bacteriostatic Effects	Chloramines Reduction	Chlorine Reduction	Cyst Reduction [†]	Lead Reduction	Microplastics Reduction	Particulate Reduction ^{††}	Scale Inhibition	Taste & Odor Reduction	Turbidity Reduction	NSF Standard 42	NSF Standard 53	NSF Standard 401		
			Flow Rate	Rated Capacity																			
EV9612-56	MC ²	1	1.67	6.3	9,000	34,000	0.2 [¶]	•	•	•	•	•	•	•	•	•	•	•	•	•	•	•	
EV9692-21	4FC	1	2.50	9.46	15,000	56,781	0.5		•		•	•	•	•	•	•	•	•	•	•	•	•	
EV9692-61	7FC	1	2.50	9.46	25,000	94,635	0.5		•		•	•	•	•	•	•	•	•	•	•	•	•	
EV9534-12	EC110 [§]	12	—	—	—	—	10																
EV9534-26	EC210 [¶]	6	—	—	—	—	10																

EPA Est. No. 002623-IL-002

Notes:

* Not shown.

[†] By mechanical means.

^{††} See individual system specification sheets for performance claims and FIFRA registration information.

[¶] As tested by Pentair.

[§] EC110 Prefilter used in systems with 10.0" [25.4 cm] prefilter bowl.

[¶] EC210 Prefilter used in systems with 20.0" [50.8 cm] prefilter bowl.

EVERPURE QC7I SYSTEMS

Part Number	Model Name	Performance			
		Gallons / Minute	Liters / Minute	Gallons	Liters
		Flow Rate	Rated Capacity		
EV9761-11	QC7I Single-XCLM+*	2.00	7.57	9,300	35,204
EV9761-12	QC7I Twin-XCLM+*	4.00	15.14	18,600	70,409
EV9761-13	QC7I Triple-XCLM+*	6.00	22.71	27,900	105,613
EV9761-14	QC7I Quad-XCLM+*	8.00	30.28	37,200	140,817
EV9771-11	QC7I Single-7CLM+	1.67	6.32	7,500	28,391
EV9771-12	QC7I Twin-7CLM+	3.34	12.64	15,000	56,781
EV9771-13	QC7I Triple-7CLM+	5.01	18.96	22,500	85,172
EV9771-14	QC7I Quad-7CLM+	6.68	25.29	30,000	113,562



QC7I-7CLM+



Coldrink 2-7CLM+



Coldrink 4-7CLM+

EVERPURE COLDRINK SYSTEMS

Coldrink 3-7FC

Part Number	Model Name	Performance			
		Gallons / Minute	Liters / Minute	Gallons	Liters
		Flow Rate	Rated Capacity		
EV9761-21	Coldrink 1-XCLM+*	2.00	7.57	9,300	35,204
EV9761-22	Coldrink 2-XCLM+*	4.00	15.14	18,600	70,409
EV9761-23	Coldrink 3-XCLM+*	6.00	22.71	27,900	105,613
EV9761-24	Coldrink 4-XCLM+*	8.00	30.28	37,200	140,817
EV9771-21	Coldrink 1-7CLM+	1.67	6.32	7,500	28,391
EV9771-22	Coldrink 2-7CLM+	3.34	12.64	15,000	56,781
EV9771-23	Coldrink 3-7CLM+	5.01	18.96	22,500	85,172
EV9771-24	Coldrink 4-7CLM+	6.68	25.29	30,000	113,562

REPLACEMENT CARTRIDGES

Part Number	Model Name	Pack Size	Performance				Benefits				Rating	
			Gallons / Minute	Liters / Minute	Gallons	Liters	Micron Rating	Chloramines Reduction	Chlorine Reduction	Particulate Reduction†	Taste & Odor Reduction	NSF Standard 42
			Flow Rate	Rated Capacity								
EV9771-00	7CLM+	1	1.67	6.32	7,500	28,391	5	•	•	•	•	•
EV9761-00	XCLM+	1	2.00	7.57	9,300	35,204	5	•	•	•	•	
EV9534-12	EC110 [§]	12	—	—	—	—	10			•		
EV9534-26	EC210 [§]	6	—	—	—	—	10			•		

Notes:

* Not shown.

† By mechanical means.

‡ See individual system specification sheets for performance claims and FIFRA registration information.

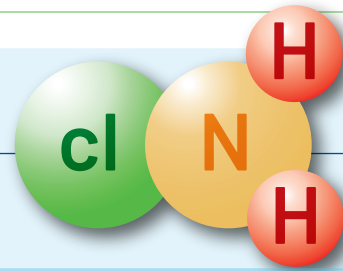
[§] EC110 Prefilter used in systems with 10.0" [25.4 cm] prefilter bowl..

[§] EC210 Prefilter used in systems with 20.0" [50.8 cm] prefilter bowl.





What You Should Know about Chloramines



What are chloramines?

Chloramines are formed by the combination of chlorine and ammonia in water, and are used as a disinfectant to treat drinking water as to control the growth of microorganisms, such as bacteria and viruses, and to provide residual disinfection throughout the distribution system.

Why chloramines versus chlorine treatment?

Chloramines provide longer-lasting water treatment as water moves through distribution systems to end-users to ensure that the water remains safe to drink.

The shift from chlorine disinfection to chloramines disinfection is predominantly driven by strict government regulations, particularly the USEPA's Stage 2 Byproducts Rules.

Chloramines occur when chlorine and ammonia mix together. This combination makes sure that water stays clean and safe in long pipes. Unlike regular chlorine, which only works briefly, chloramines sustain their disinfection for two or three days. They also don't create as many byproducts in the water, like THMs. This is important because it helps municipalities meet EPA guidelines for drinking water quality.

EVERPURE CB20 SYSTEMS

These water systems meet the capacity and flow criteria for high-flow, high-volume combination applications. Utilizing granular activated carbon (GAC) that effectively captures sediment while reducing unpleasant odors caused by chloramines and chlorine. These attributes can help contribute to equipment longevity and help match the flavor profile of your beverages. Includes NSF/ANSI certification.

Performance

Part Number	Model Name	Gallons / Minute	Liters / Minute	Gallons	Liters
		Flow Rate	Rated Capacity		
EV9100-31	CB20-124E Housing	5.00	18.93	—	—
EV9100-32	CB20-302E Housing	5.00	18.93	20,000	75,708
EV9100-34	CB20-302E Housing	5.00	18.93	—	—
EV9100-37	CB20-312E* Housing	5.00	18.93	85,000	321,760
EV9100-51	CB20-124E Housing	5.00	18.93	15,000	56,781
EV9100-70	CB20-312E Housing	5.00	18.93	—	—



CB20-124E



CB20-302E



CB20-312E*

REPLACEMENT CARTRIDGE KITS

Performance

Benefits

Technology

Part Number	Model Name	Gallons	Liters / Minute	Description	Chloramines Reduction*	Chlorine Reduction	Taste & Odor Reduction	Cyst Reduction†	VOCs Reduction	GAC	Carbon Block
		Rated Capacity									
EV9105-02	124E Kit	15,000	56,775	CC1E cartridge (1)	•	•	•			•	
EV9105-21	302E Kit	20,000	75,700	CC1E (1) and CC3E cartridge (1)	•	•	•	•	•	•	•
EV9105-34	312E Kit	85,000	321,769	CC1E (1) and CC3E cartridge (2)	•	•	•	•	•	•	•

124E Kit

302E Kit

312E Kit

Notes:

* Meets the requirements of the Coca-Cola® specification for chloramines reduction.

† By mechanical means.

‡ See individual system specification sheets for performance claims and FIFRA registration information.

EVERPURE FX SYSTEMS

The FX series complements the demand for various food and beverage applications. The gradient-density filtration reduces sediment, chlorine taste & odor and is NSF/ANSI and IAPMO certified. IsoNet® technology serves to safeguard equipment from the effects of scale and corrosion.

Part Number	Model Name	Performance				Benefits			Rating
		Gallons / Minute	Liters / Minute	Gallons	Liters	Chlorine Reduction	Particulate Reduction*	Taste & Odor Reduction	NSF Standard 42
		Flow Rate		Rated Capacity					
160-50010	FX-11	1.5	5.7	15,000	56,775	•	•	•	•
160-50015	FX-21	1.5	5.7	15,000	56,781	•	•	•	•
160-50020	FX-12	3	11.3	30,000	113,550	•	•	•	•
160-50022	FX-12B	5	18.9	50,000	189,271				
160-50025	FX-22	3	30	30,000	113,550	•	•	•	•
160-50030	FX-22P	6	22.7	60,000	227,100	•	•	•	•
160-50035	FX-22P+	6	22.7	60,000	227,100	•	•	•	•
160-50340	FXAF-12B	8	30	—	—				



REPLACEMENT CARTRIDGES

Part Number	Model Name	Pack Size	Performance				Features		Benefits		
			Gallons / Minute	Liters / Minute	Gallons	Liters	Micron Rating	PolyTrix	Chloramines Reduction	Chlorine Reduction	Particulate Reduction
			Flow Rate		Rated Capacity						
252-00210	CTO-10*	1	1.5	5.7	15,000	56,775	5		•		•
252-00220	CTO-20*	1	3.0	8.5	30,000	113,550	5		•		•
252-10110	S5-10	1	5.0	18.9	—	—	5	•		•	
252-10120	S5-20	1	10.0	37.8	—	—	5	•		•	
252-10405	S1-20B	1	—	—	—	—	1	•		•	
252-10410	S5-20B	1	—	—	—	—	5	•		•	
252-20420	CTO-20B	1	5.0	18.9	50,000	189,270	0.5		•		•
252-20620	CCM-20	1	5.0	18.9	50,000	189,2550	—		•		



*Also available in 6-packs

Notes:

*By mechanical means.

† See individual system specification sheets for performance claims and FIFRA registration information.





EVERPURE SIMPLIFLOW WATER MANAGEMENT SYSTEMS

The Everpure SimpliFlow System can rescue your backroom from the typical tangled mess of water lines that worsen as your water needs grow and change. This adaptable, simple-to-use beverage line management system provides quick and easy identification of water lines, and helps you organize and manage fluid movement throughout your store.

- Manage water-by-water quality profiles and applications
- Compact and easy to install
- Easily identify water lines using labels included with each manifold
- Multiple connection options available
- Flexible inlet placement
- Flexible manifold can be rotated 90 degrees within bracket to allow for elbow connections



EV9961-00



EV9961-50

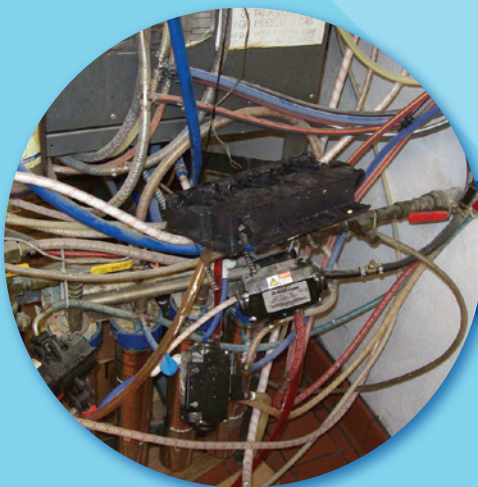


EV9962-00

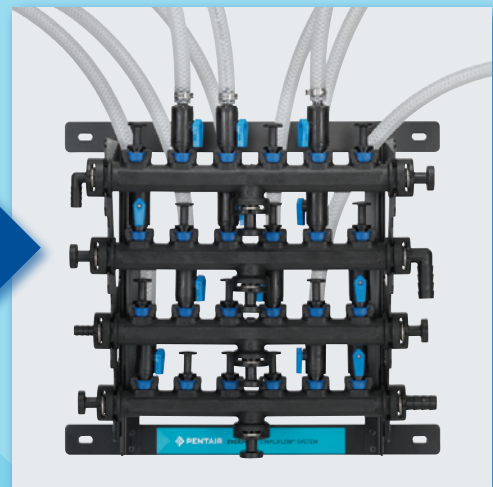
Part Number	System	Description
EV9961-00	Single Standard Manifold	Three (3) inlets and six (6) outlets Manages a single water quality
EV9961-50	Single Split Manifold	Features three (3) valves on each side Allows for two (2) different water qualities
EV9962-00	Twin Standard Manifold	Two (2) manifolds for a total of six (6) inlets, and up to 12 valve outlets Allows for two (2) different water qualities

From CHAOS to CONNECTIVITY

Keep Your Water Lines Organized & Efficient



Detecting and identifying water lines to water-using equipment can pose challenges that can result in downtime and additional costs.



Water line organization made simple with Everpure SimpliFlow.



Experience the Benefits with clean steam

When water is converted to steam, it leaves impurities behind. Over time, this can cause hard scale build-up and maintenance downtime. Pentair Everpure water filtration solutions can help maintain the efficient operation of your steam equipment by ensuring quality water throughout your operation.



STEAM FILTRATION SYSTEMS



EVERPURE KLEENSTEAM

Enhance operational efficiency, optimize performance, and help extend the lifespan of your equipment with Everpure Kleensteam filtration systems. The integrated filter and patented Hydroblend carbon block media helps reduce particulates, contaminants and other unwanted impurities from your water.

Part Number	Model Name	Performance			
		Gallons / Minute	Liters / Minute	Gallons	Liters
		Flow Rate		Rated Capacity	
EV9797-50	Kleensteam CT	1.67	6.32	6,000	22,710
EV9797-21	Kleensteam II Single*	2.50	9.46	10,000	37,850
EV9797-22	Kleensteam II Twin	5.00	18.93	20,000	75,700
EV9797-40	Kleensteam II Twin w/o Feeder	5.00	18.93	20,000	75,700



Kleensteam CT



Kleensteam II Twin



Kleensteam II Twin without feeder

REPLACEMENT CARTRIDGES

Part Number	Model Name	Pack Size	Performance				Rating	
			Gallons / Minute	Liters / Minute	Gallons	Liters	Micron Rating	NSF Standard 42
			Flow Rate		Rated Capacity			
EV9617-05	2CB5	6	1.0	3.8	3,000	11,355	5.0	•
EV9617-16	4CB5	6	1.67	6.34	6,000	22,710	5.0	•
EV9618-11	7CB5	1	2.5	9.5	10,000	37,850	5.0	•

* Not shown.

EVERPURE QT SERIES

Ideal for manufacturers with specific needs in high-volume chloramines reduction, the QT (Qwik-Twist) water systems help ensure consistent quality water delivery throughout your foodservice operation.

Performance

Part Number	Model Name	Gallons / Minute	Liters / Minute	Gallons	Liters
		Flow Rate		Rated Capacity	
170-52080	QT1+CR	2.5	9.5	20,000	75,708
170-52081	QT11+CR	2.5	9.5	20,000	75,708
160-52120	QTPT-2	2.25	8.5	22,500	85,162
160-52131	QTCR-1	1.7	6.4	10,000	37,850
170-52132	QTCR-2	3.4	12.9	20,000	75,700
170-52133	QTCR-3	5.1	19.3	30,000	113,550
170-52134	QTCR-4	6.8	25.7	40,000	151,400



QT1+CR



QT11+CR



QTCR-3

REPLACEMENT CARTRIDGES

Performance

Benefits

Rating

Part Number	Model Name	Pack Size	Gallons / Minute	Liters / Minute	Gallons	Liters	Micron Rating	Chlorine Reduction	Chloramines Reduction	Particulate Reduction [†]	IsoNet [®] Technology	Scale Inhibition	Taste & Odor Reduction	NSF Standard 42
			Flow Rate		Rated Capacity									
300-05828	CTO-Q10	1	1.5	5.7	15,000	56,775	1.5	•	•				•	•
300-05832	CTOS-QCR	1	0.5	1.9	6,000	22,712	0.5		•		•	•		
300-05831	CTO-QCR	1	0.5	1.9	6,000	22,712	0.5		•					

* By mechanical means.

† See individual system specification sheets for performance claims and FIFRA registration information.



STEAM FILTRATION

REVERSE OSMOSIS



EVERPURE EZ-RO SYSTEMS (NO BLEND)

The Pentair Everpure EZ-RO is all that's needed to reduce contaminants in your water and safeguard your foodservice equipment. Offering a single, adaptable system that can expand with your business, these systems offer multiple tank options and sizes to accommodate your varying business needs and volume.

- High efficiency RO membrane saves up to two times more water than standard RO membranes.*
- All-in-one-system includes full installation kit
- Modular design for flexible footprint
- Blending for taste consistency
- EZ-RO 375/10G† is Certified under NSF/ANSI Standard 58

Part Number	Model Name	Performance		Features										Rating			
		Production Rate Gpd	Production Rate Lpd	Mineral Addition	3/8" Push-to-connect inlet	1/2" OD Push-to-connect outlet	3/4" garden hose connection included	Electrical Connection Grounded 115 VAC, 2 Amp	2-Gallon hydro pneumatic tank	5-Gallon hydro pneumatic tank	10-Gallon hydro pneumatic tank	16-Gallon hydro pneumatic tank	16-Gallon atmospheric tank	30-Gallon atmospheric tank	50-Gallon atmospheric tank	NSF Standard 58 (TDS reduction)	CSA B483.1 (TDS reduction)
EV9975-51	EZ-RO 200/2G	200	757	•	•	•	•		•							•	•
EV9975-52	EZ-RO 200/5G	200	757	•	•	•	•			•						•	•
EV9975-53	EZ-RO 200/10G	200	757	•	•	•	•				•					•	•
EV9975-54	EZ-RO 200/16G	200	757	•	•	•	•					•				•	•
EV9975-55	EZ-RO 375/2G	375	1,419	•	•	•	•		•							•	•
EV9975-56	EZ-RO 375/5G	375	1,419	•	•	•	•			•						•	•
EV9975-57	EZ-RO 375/10G	375	1,419	•	•	•	•				•					•	•
EV9975-58	EZ-RO 375/16G	375	1,419	•	•	•	•					•				•	•
EV9975-67	EZ-RO 375/16ATM	375	1,419	•	•	•	•	•					•			•	•
EV9975-68	EZ-RO 375/30ATM	375	1,419	•	•	•	•	•						•		•	•
EV9975-69	EZ-RO 375/50ATM	375	1,419	•	•	•	•	•							•	•	•
EV9975-70	EZ-RO 650/16ATM	650	2,460	•	•	•	•	•					•			•	•
EV9975-71	EZ-RO 650/30ATM	650	2,460	•	•	•	•	•						•		•	•
EV9975-72	EZ-RO 650/50ATM	650	2,460	•	•	•	•	•							•	•	•



EZ-RO 200



EZ-RO 375



EZ-RO 650

REPLACEMENT CARTRIDGES

Part Number	Model Name	Pack Size	Performance		Capacity		Used In		Benefits							Rating				
			Gallons / Minute	Liters / Minute	Gallons	Liters	Micron Rating	EZ-RO 200	EZ-RO 375	EZ-RO 650	Bacteriostatic Effects	Chlorine Reduction	Mineral Addition	Particulate Reduction†	pH Stabilization	Scale Inhibition	Taste & Odor Reduction	TDS Reduction	NSF Standard 42	CSA B483.1
EV9627-80	4CM	1	0.5	1.9	-	-	-	•	•											
EV9627-85	7CM	1	0.5	1.9	-	-	-			•										
EV9628-92	EZ-200	1	-	-	-	-	-	•												•
EV9628-93	EZ-375	1	-	-	-	-	-		•											•
EV9628-94	EZ-650	1	-	-	-	-	-			•										•
EV9693-31	4FC5-S	1	2.5	9.46	15,000	56,781	5.0	•	•	•	•	•	•	•	•	•	•	•	•	•
EV9693-61	7FC5-S	1	2.5	9.5	25,000	94,635	5.0		•	•	•	•	•	•	•	•	•	•	•	•

For more information on EZ-RO systems and tanks visit:
pentair.com/ez-ro

*Up to 50% water recovery compared to standard RO systems with up to 25% recovery as tested by Pentair.

† By mechanical means.

‡ See individual system specification sheets for performance claims and FIFRA registration information.

EVERPURE CONSERV LT-S HIGH EFFICIENCY RO SYSTEM

Designed to provide high-quality blended and filtered water for applications with lower water demand, the Everpure Conserv LT-S reverse osmosis system offers a capacity of up to 50 gallons per day (gpd). These highly efficient systems play a crucial role in reducing scale and corrosion buildup, which is particularly important in areas with elevated levels of total dissolved solids (TDS) and chlorides.

- Service flow rate: 0.5 gpm (1.9 L)
- Service capacity: 3 gallons (11.36 L)
- Fibredyne filtration technology reduces sediment and chlorine taste & odors
- Certified under NSF/ANSI standard 58

The system includes:

- A 4FC5 pretreatment carbon cartridge
- The GRO-75EN RO membrane cartridge
- 4CC post-treatment calcite feeder
- A blending valve to fine-tune the mineral content of the effluent water



Part Number	Model Name
EV9975-20	Conserv LT-S
EV9976-25	Conserv RO Steam Replacement Cartridge Kit (GRO-75EN Membrane, 4CC Filter Cartridge and 4FC5 Filter Cartridge)

REPLACEMENT CARTRIDGES

Part Number	Model Name	Pack Size	Performance				Benefits					
			Gallons / Minute	Liters / Minute	Gallons	Liters	Micron Rating	Bacteriostatic Effects	Lead Reduction	Mineral Addition	Particulate Reduction*†	Taste & Odor Reduction
EV-9627-45	4CC	1	0.5	1.9	–	–	–			•		
EV9693-21	4FC5	1	2.5	9.5	15,000	6,781	5.0	•	•		•	•
4005460	GRO-75EN	1	–	–	–	–	–					

It is highly recommended that a Pentair RO storage tank and pressure relief valve kit are used with all Pentair reverse osmosis systems.

* See individual system specification sheets for performance claims and FIFRA registration information.
† By mechanical means.



STEAM FILTRATION

REVERSE OSMOSIS



EVERPURE MRS SERIES REVERSE OSMOSIS SYSTEMS

- 100 to 350 gallons [378 to 1,325 L] per day of permeate water
- Easy, quick cartridge change
- The CC-BL series systems combine the BL series' adjustable capability with controlled remineralization using the CC cartridge to help minimize corrosion and scale buildup

Part Number	Model Name
EV9970-07	MRS-100*
EV9970-08	MRS-225*
EV9970-17	MRS-350
EV9970-76	MRS-225BL*
EV9970-20	MRS-350BL*
EV9970-19	MRS-225CC-BL*
EV9973-65	MRS-350CC-BL*
EV9795-81	Optional 10" Prefilter Kit*
EV3149-52	Power Supply Upgrade Kit

All powered models available in 100-240 VAC / 50-60 Hz switchable power supply. Contact Pentair Everpure for details.

Up to 100 & 225 GPD

MRS-100BL and MRS-225BL (plus CC-BL)

MRS-225CC-BL shown. Order tank separately.

Note:
CC-BL model includes calcite feeder cartridge which adds minerals back into water.



Up to 350 GPD

MRS-350BL (plus CC-BL)

MRS-350 CC-BL shown with optional prefilter. Order tank separately.

Note:
CC-BL model includes calcite feeder cartridge which adds minerals back into water; BL model includes blend valve and submicron filter† which allows setting a blend of filtered and RO water.



It is highly recommended that a Pentair RO storage tank and pressure relief valve kit are used with all Pentair reverse osmosis systems.

REPLACEMENT CARTRIDGES

Part Number	Model Name	Pack Size	Performance		Capacity		Used In				Benefits									
			Gallons / Minute	Liters / Minute	Gallons	Liters	MRS-100	MRS-225	MRS-350	MRS-225BL	MRS-350BL	MRS-225CC-BL	MRS-350CC-BL	Chlorine Reduction	Mineral Addition	Particulate Reduction†	Scale Inhibition†	Taste & Odor Reduction	TDS Reduction†	Turbidity Reduction
155014-43	P5‡	1	5	18.9	—	—														
EV9607-41	6T0-BW	1	1.5	5.74	24,000	90,850	•	•		•	•	•	•					•		
EV9627-04	7T0-BW	1	1.5	5.74	30,000	113,550			•		•	•	•					•		
EV9627-05	7CC-BW	1	0.5	1.9	—	—								•						
EV9627-11	MR-100	1	daily production rate‡ 100	378	—	—	•											•	•	
EV9627-03	MR-225	1	daily production rate‡ 225	852	—	—		•		•	•	•						•	•	•
EV9627-07	MR-350	1	daily production rate‡ 350	4,658	—	—			•		•	•	•					•	•	•
EV9668-24	BW-4400	1	0.5	1.9	12,000	45,400				•	•	•	•	•	•	•	•	•	•	•

* Not shown.

† As tested by Pentair.

‡ See individual system specification sheets for performance claims.

¶ Flow rate is dependent on water volume and pressure in storage tank(s), and line size(s) to equipment.

§ For systems with optional prefilter.

EVERPURE OPS REVERSE OSMOSIS SYSTEMS

The Pentair Everpure OPS reverse osmosis systems combat the issues associated with TDS, chlorides, and other heavy metals to help reduce limescale buildup and corrosion. These systems incorporate high-capacity prefilters that efficiently reduce sediment and chlorine odors to ensure an efficient mixture of filtered and mineral-enriched water.

These cost effective, compact designed systems are available in 16 different configurations to fit your specific needs.

- Incorporates an operating pressure gauge and a hydropneumatic storage tank
- Optimized water line to equipment is 1/2" I.D. hose; a 3/4" garden hose thread (GHT) connector is provided for connection to equipment when applicable
- Wall-mounted
- Easy, Qwik-Twist replacement cartridges

Ideal for combi ovens, steamers and proofer



OPS1750CR/10



OPS175CR/16



OPS70CR/2



OP70CR/5

Part Number	Model	Type	Storage Tank Volume†		Rated Capacity*		Delivery Flow Rate	
			Gallons	Liters	Gal/day	L/day	Gpm	Lpm
164-01402	OPS175CR/2‡	Mineral Addition, Chloramines Reduction	2.0	7.6	175	662	up to 1.0	up to 3.8
164-01405	OPS175CR/5‡	Mineral Addition, Chloramines Reduction	5	18.9	175	662	up to 1.0	up to 3.8
164-01410	OPS175CR/10	Mineral Addition, Chloramines Reduction	10	37.9	175	662	up to 2.5	up to 9.5
164-01416	OPS175CR/16	Mineral Addition, Chloramines Reduction	16	60.5	175	662	up to 2.5	up to 9.5
164-01502	OPS70CR/2	Mineral Addition, Chloramines Reduction	2.0	7.6	70	265	up to 1.0	up to 3.8
164-01505	OPS70CR/5	Mineral Addition, Chloramines Reduction	5	18.9	70	265	up to 1.0	up to 3.8

REPLACEMENT CARTRIDGES



Part Number	Model Name	Pack Size	Performance			Micron Rating	Used In	Benefits								
			Gallons / Minute	Liters / Minute	Gallons			Liters	OPS175CR	OPS70CR	Chloramines Reduction	Chlorine	Mineral Addition	Particulate Reduction§	pH Stabilization	Scale Inhibition
160-52009	CTO-Q10	1	1.5	5.7	15,000	56,775	0.5	•	•	•	•	•	•	•	•	•
204-52810	AMS-QT10	1	—	—	75	284	—	•								•
204-52820	AMS-QT15	1	—	—	175	662	—	•								
300-05821	CTO-Q10CR	1	0.5	1.9	4,000	15141.7	—	•	•	•	•	•	•	•	•	•

* Gallons per day at 77°F at 60 PSI. Production will vary depending on available water pressure and water temperature.
† Delivery pressure and flow will vary depending on water level in tank.

‡ Not Shown
§ Not performance tested or certified by NSF
§ By Mechanical Means



STEAM FILTRATION SOFTENING



EVERPURE CLARIS™ PRIME

The Claris Prime represents an innovative and efficient solution for water treatment. It offers quick cartridge change-out capabilities for salt-less softening through ion exchange and filtration, to help prevent scale buildup and remove contaminants. What sets it apart is its capacity to customize the water hardness to meet your specific needs.

- Softens without salt
- Requires no electricity or drain
- Cartridge certified under NSF/ANSI Standard 42
- Claris 5-stage filtration process offers:
 - Prefiltration
 - Hardness adjustment
 - Fine filtration
 - Carbon block helps reduce chlorine taste & odor and filters sediment down to 5 microns

Claris Prime Technology not only offers all the advantages of the standard Claris Technology but also includes the following enhancements:

- 30-100 ppm of corrosive salts
NOTE: If your water exceeds these levels, consider utilizing an RO system instead
- Reduction of both TDS and corrosion
- Reduction of mineral hardness and anions
- Customized adjustments for TDS reduction, chloride (Cl) and sulfate (SO₄) levels



		Performance				Features		
Part Number	Model Name	Gallons	Liters / Minute	Gallons	Liters	Auto Shutoff	Mounting Bracket	Connection
		Flow Rate		Rated Capacity				
EV4339-86	Claris Prime	1.00	3.79	557*	2,110*			3/8" QCF
EV4339-90	Claris Gen 2 Head	-	-	-	-	•	•	3/8" BSP
EV4339-91	Claris Gen 2 Head	-	-	-	-	•	•	3/8" NPT
EV4339-92	Claris Gen 2 Head	-	-	-	-	•	•	3/8" QCF

* For direct injection combi ovens; capacity based on influent water TDS of ppm, hardness of 180 ppm and chloride 60 ppm

Claris™ is a trademark of ACLARIS Water Innovations GmbH.



Transform Your Ice with cleaner water

The quality and flavor of your ice is essential for any foodservice operation. Whether clear cubes in a crafted cocktail or finely crushed ice in a refreshing fountain drink, Pentair can elevate your water treatment to help ensure the freshest and most memorable ice experience.





EVERPURE ICE SYSTEMS

Keep your ice operation functioning at full capacity with the commercial-grade ice filters from Pentair. Featuring Fibredyne technology and integrated scale inhibitors, these filters work hard to maintain quality water and deliver the freshest ice possible from freezer to drink.

EVERPURE QC7I SYSTEMS

- Certified under NSF/ANSI Standards 42, 53, and 401
- Exclusive Fibredyne™ II media reduces chlorine taste & odor while providing particulate reduction down to 0.2* micron.†
- Proprietary Micro-Pure® II filtration media effectively inhibits the growth of bacteria on the filter media that can decrease product life
- Manifold features an inlet water shutoff valve with an optional integrated sediment prefilter, flushing valve and water pressure gauge(s)

Part Number	Model Name	Performance			
		Gallons / Minute	Liters / Minute	Gallons	Liters
		Flow Rate		Rated Capacity	
QC7I					
EV9202-61	QC7I Single 4FC5-S	2.5	9.46	15,000	56,781
EV9202-62	QC7I Twin 4FC5-S*	5	18.93	30,000	113,562
EV9202-71	QC7I Single 7FC5-S*	2.5	9.46	25,000	94,635
EV9202-72	QC7I Twin 7FC5-S	5	18.93	50,000	189,721
EV9202-81	QC7I Single 4FC-S*	2.5	9.46	15,000	56,781
EV9202-82	QC7I Twin 4FC-S	5	18.93	30,000	113,562
EV9202-91	QC7I Single 7FC-S	2.5	9.46	25,000	94,635
EV9202-92	QC7I Twin 7FC-S	2.5	9.46	25,000	94,635
QC7I PF					
EV9328-62	QC7I PF Twin 7FC5-S*	5	18.93	50,000	189,721
EV9328-82	QC7I PF Twin 4FC-S	5	18.93	30,000	113,562
EV9328-91	QC7I PF Single 7FC-S*	2.5	9.46	25,000	94,635
EV9328-92	QC7I PF Twin 7FC-S	5	18.93	50,000	189,271



QC7I Single 4FC5-S



QC7I PF Single 7FC-S

REPLACEMENT CARTRIDGES

Part Number	Model Name	Pack Size	Performance				Micron Rating	Benefits					Rating
			Gallons / Minute	Liters / Minute	Gallons	Liters		Bacteriostatic Effects	Chlorine Reduction	Particulate Reduction [‡]	Scale Inhibition [§]	Taste & Odor Reduction	
			Flow Rate		Rated Capacity								
EV9693-31	4FC5-S	1	2.5	9.46	15,000	56,781	5	•	•	•	•	•	•
EV9693-71	7FC5-S	1	2.5	9.46	25,000	94,635	5	•	•	•	•	•	•
EV9534-12	EC110 [§]	1	–	–	–	–	10			•			
EV9534-26	EC210	1	–	–	–	–	10			•			

* Not shown.

† By mechanical means.

‡ See individual system specification sheets for performance claims and FIFRA registration information.

§ As tested by Pentair.

|| EC110 Prefilter used in systems with 10.0" [25.4 cm] prefilter bowl.

|| EC210 Prefilter used in systems with 20.0" [50.8 cm] prefilter bowl.

EVERPURE INSURICE SYSTEMS

- Certified under NSF/ANSI Standards 42, 53, and 401
- Exclusive Fibredyne II media reduces chlorine taste & odor while providing particulate reduction down to 0.2* micron.
- Proprietary Micro-Pure® II filtration media effectively inhibits the growth of bacteria on the filter media that can decrease product life
- Manifold features an inlet water shutoff valve with an optional integrated sediment prefilter, flushing valve and water pressure gauge(s)



Insurice Quad PF-4FC-S



Insurice PF Triple 7FC-S



Insurice Quad PF-7FC-S

Insurice FC-S Systems

Part Number	Model Name	Performance			
		Gallons / Minute	Liters / Minute	Gallons	Liters
		Flow Rate		Rated Capacity	
EV9327-73	Insurice PF Triple 7FC-S	7.50	28.39	75,000	283,906
EV9327-74	Insurice PF Quad-7FC-S	10.00	37.85	100,000	378,541
EV9327-44	Insurice PF Quad-4FC-S	10.00	37.85	60,000	227,124

REPLACEMENT CARTRIDGES

Part Number	Model Name	Pack Size	Performance				Micron Rating	Benefits						Rating		
			Gallons / Minute	Liters / Minute	Gallons	Liters		Bacteriostatic Effects	Chlorine Reduction	Cyst Reduction [¶]	Particulate Reduction [†]	Scale Inhibition [†]	Taste & Odor Reduction	Turbidity Reduction	NSF Standard 42	NSF Standard 53
			Flow Rate		Rated Capacity											
EV9692-31	4FC-S	1	2.5	9.46	15,000	56,781	0.2 [†]	•	•	•	•	•	•	•	•	•
EV9692-71	7FC-S	1	2.5	9.46	25,000	94,635	0.2 [†]	•	•	•	•	•	•	•	•	•
EV9534-12	EC110 [§]	1	–	–	–	–	10				•					
EV9534-26	EC210	1	–	–	–	–	10				•					

Notes:

* Validated by ISO 17025 accredited lab for 99.999% reduction of *Pseudomonas diminuta* following the ASTM F838-05 protocol for the validation of 0.2 µm sterilizing grade filters.

† As tested by Pentair.

‡ By mechanical means.

¶ See individual system specification sheets for performance claims and FIFRA registration information.

§ EC110 Prefilter used in systems with 10.0" [25.4 cm] prefilter bowl.

|| EC210 Prefilter used in systems with 20.0" [50.8 cm] prefilter bowl.





EVERPURE INSURICE SYSTEMS

Insurice SI Systems

Part Number	Model Name	Performance			
		Flow Rate		Rated Capacity	
		Gallons / Minute	Liters / Minute	Gallons	Liters
EV9324-60	Insurice Single-4SI*	2.00	7.57	15,000	56,700
EV9324-61	Insurice PF Single 4SI				
EV9324-70	Insurice Single-7SI*	3.50	13.25	25,000	94,635
EV9324-71	Insurice PF Single 7SI				
EV9324-72	Insurice Twin-7SI*	7.00	26.50	50,000	189,271
EV9324-73	Insurice PF Twin 7SI				
EV9324-74	Insurice Triple-7SI*	10.50	39.75	75,000	283,906
EV9324-75	Insurice PF Triple 7SI*				
EV9324-76	Insurice Quad-7SI*	14.00	53.00	100,000	378,541
EV9324-77	Insurice PF Quad-7SI*				

4SI & 7SI SYSTEMS



Insurice PF Single 4SI



Insurice PF Single 7SI

Insurice i Systems

Part Number	Model Name	Performance			
		Flow Rate		Rated Capacity	
		Gallons / Minute	Liters / Minute	Gallons	Liters
EV9324-21	Insurice PF Single i2000 ²	1.67	6.32	9,000	34,065
EV9324-01	Insurice Single-i2000 ²				
EV9324-22	Insurice PF Twin i2000 ²	3.34	12.64	18,000	61,800
EV9324-02	Insurice Twin-i2000 ²				
EV9325-23	Insurice PF Triple i4000 ²	5.01	18.96	36,000	136,260
EV9325-03	Insurice Triple-i4000 ^{2*}				
EV9325-04	Insurice Quad-i4000 ^{2*}	6.68	25.29	48,000	181,700

i2000² & i4000² Systems



Insurice PF Single i2000² S



Insurice PF Twin i2000²

REPLACEMENT CARTRIDGES

Part Number	Model Name	Pack Size	Performance				Micron Rating	Benefits							Rating				
			Flow Rate		Rated Capacity			Asbestos Reduction	Bacteriostatic Effects	Chlorine Reduction	Cyst Reduction [†]	Particulate Reduction ^{††}	Scale Inhibition [†]	Taste & Odor Reduction	Turbidity Reduction	NSF Standard 42	NSF Standard 53	NSF Standard 401	
			Gallons / Minute	Liters / Minute	Gallons	Liters													
EV9606-01	7SI	1	3.5	13.25	–	–	0.5				•	•	•				•	•	•
EV9606-51	4SI	1	2.0	7.57	–	–	0.5				•	•	•				•	•	•
EV9612-22	i2000 ²	1	1.67	9.3	9,000	34,000	0.2 [†]	•	•	•	•	•	•	•	•	•	•	•	•
EV9612-32	i4000 ²	1	1.67	9.3	12,000	45,500	0.2 [†]		•	•	•	•	•	•	•	•	•	•	•
EV9534-12	EC110 [§]	1	–	–	–	–	10												
EV9534-26	EC210 [§]	1	–	–	–	–	10												

* Not shown

[†] By mechanical means.

^{††} See individual system specification sheets for performance claims and FIFRA registration information.

[§] EC110 Prefilter used in systems with 10.0" [25.4 cm] prefilter bowl.

[§] EC210 Prefilter used in systems with 20.0" [50.8 cm] prefilter bowl.

EVERPURE FX FILTRATION SYSTEMS

Featuring gradient-density filtration to help minimize sediment, chlorine taste & odor, the FX product-line series is NSF/ANSI and IAPMO certified. IsoNet® technology serves to help safeguard equipment from the effects of scale and corrosion.

Part Number	Model Name	Performance		Benefits					Rating	
		Gallons / Minute	Liters / Minute	Gallons	Liters	Chlorine Reduction	Particulate Reduction*†	Scale Inhibition†	Taste & Odor Reduction†	NSF Standard‡
		Flow Rate	Rated Capacity							
160-50105	FXI-11	1.5	5.7	15,000	56,775	•	•	•	•	•
160-50110	FXI-12	3	11.3	30,000	113,550	•	•	•	•	•
160-50115	FXI-22	3	11.3	30,000	113,550	•	•	•	•	•
160-50120	FXI-22P	6	22.7	60,000	227,100	•	•	•	•	•
160-50125	FXI-22P+	6	22.7	60,000	227,100	•	•	•	•	•



REPLACEMENT CARTRIDGES

Part Number	Model Name	Pack Size	Performance		Features			Benefits					
			Gallons / Minute	Liters / Minute	Gallons	Liters	Micron Rating	PolyTriX	IsoNet®	Chlorine Reduction	Particulate Reduction*†	Scale Inhibition†	Taste & Odor Reduction†
			Flow Rate	Rated Capacity									
252-00310	CTOS-10 [†]	1	1.5	5.7	15,000	56,775	5		•	•	•	•	•
252-00320	CTOS-20 [†]	1	3.0	8.5	30,000	113,550	5		•	•	•	•	•
252-10810	PTS-10 [†]	1	2.5	9.5	—	—	5	•	•			•	•
252-00820	PTS-20 [†]	1	5.0	18.9	—	—	5	•	•			•	•
252-10110	S5-10	1	5.0	18.9	—	—	5	•			•		•
252-10120	S5-20	1	10.0	37.8	—	—	5	•			•		•

[†]Also available in 6-packs

*By mechanical means.

† See individual system specification sheets for performance claims and FIFRA registration information.

‡ As tested by Pentair.





OZONE DISINFECTION PRODUCTS

ICE SOLUTIONS

Ozone products have been used in the food industry for decades and can play a critical role in combating food pathogens in water and air as an antimicrobial agent. Ozone can support your efforts to improve the safety, quality, and longevity of your products.

EVERPURE OXIDICE DISINFECTION SYSTEM

Oxidice is a disinfection system that treats your entire ice machine from the inside, attacking biofilm at its source. This compact ozone generator effectively treats your ice machine's water, air, and internal surfaces, promoting the reduction of mold, mildew, biofilm and other unwanted impurities. These benefits translate to extended time between maintenance and cleaning, ensuring quality ice production.



Applications

- Bakeries
- Breweries
- Cafes
- Grocery stores
- Hotel/hospitality
- Nursing homes
- Restaurants
- Schools

Features • Benefits

- Compatible with ice cube machines of any size
- Variable ozone output for tailored performance
- Quick and simple installation
- Equipped with universal power supply
- Only by-product is oxygen†
- Chemical-free operation with no refilling or recharging needed



Part Number	Model Name	Power Cord	Air Flow	Ozone Level	Ambient Conditions	Outlet Connection	Input Power
CD385A	Oxidice	120V US/Can	0.5-2.0 (14-56.6 L/h) SCFH, back pressure 2 PSI (13.8 kpa) max	150 mg/hr (56.6 L/h) @ 2.0 SCFH on ambient air	32 - 95°F (0-35°C) 10-75% RH non-condensing	3/16" barb	90-265 VAC 50-60 Hz 0.38-0.17A
CD390D		US 240V US/Can					

Oxidice uses a unique ozone disinfection process that uses both aqueous and gaseous oxidation simultaneously to help reduce contaminants in the air and the water.

visit pentair.com/oxidice to learn more

* See individual system specification sheets for performance claims and FIFRA registration information.

† Any ozone that does not react with another compound will break down to oxygen. In water, half of the unused ozone will revert back to oxygen in 20 minutes at 68°F (20°C). In air, half of the unused ozone will revert back to oxygen in 3 days at 68°F (20°C).

EPA Est. No. 002623-IL-002

FROM ORDINARY TO EXTRAORDINARY!



i2000², i4000² and Oxidice
help deliver fresh ice,
cube after cube



visit pentair.com/oxidice to learn more





CLEANER WATER FOR AWESOME ICE

Delight with ice that sparkles—all while protecting your equipment. With properly filtered water, you'll deliver ice that is cleaner and fresher.



REALLY NICE ICE

Improve ice quality and taste, reducing contaminants that can lead to hollow, cloudy, bad-tasting ice



ENERGY SAVING

An ice machine running at peak efficiency means lower operating costs



PROTECTION FOR EQUIPMENT

Protect your machine by reducing scale buildup and corrosion



Fact: 50–75% of ice machine service calls are water-related.*

*Source: Dick Wirz. *Refrigeration for Air Conditioning Technicians*, Cengage Learning, 2018, 2010 p. 350



QUALITY WATER FILTRATION GOES A LONG WAY

Pentair Everpure is proud to be a global water industry standard since 1933, serving the foodservice industry with reliable, consistent, quality water solutions for ninety years. When it comes to your customers' water, trust the experts.



Single Filtration Systems **working double duty**

Whether it's a fountain beverage, coffee or steam oven, Pentair Everpure combination systems can help ensure your water is at its best at every turn, taste, or touch-point. You'll save time and reduce maintenance without having to buy multiple water filters.



COMBINATION SYSTEMS

FILTRATION SYSTEMS



EVERPURE HIGH FLOW CSR SYSTEMS



High Flow CSR Twin-MC²



High Flow CSR Triple 7FC



High Flow CSR Quad 7FC

Performance

Application

Part Number	Model Name	Flow Rate		Rated Capacity		# of Carbonators	Daily Production Lbs		Pot-Brewers	Urns
		Gallons / Minute	Liters / Minute	Gallons	Liters		Fountain	Ice		
MC² Systems										
EV9330-42	High Flow CSR Twin-MC ²	3.34	12.64	18,000	68,100	1	<650	<294	N/A	N/A
EV9328-05*	High Flow CSR Triple-MC ² w/low pressure alarm	5.00	18.96	27,000	102,195	1	<650	<294	Up to 2	N/A
EV9328-06*	High Flow CSR Triple MC ²	5.00	18.96	27,000	102,206	1	< 650.0	< 294.8	Up to 2	N/A
EV9437-10*	High Flow CSR Quad MC ²	6.68	25.29	36,000	136,275	2	< 650.0	< 294.8	Up to 2	1
EV9437-11*	High Flow CSR Quad-MC ² w/low pressure alarm	6.68	25.29	36,000	136,275	2	< 650.0	< 294.8	Up to 2	1
4FC & 7FC Systems "Right-sized" to fit ice filtration applications with increased flow rates.										
EV9329-72*	High Flow CSR Twin 7FC	5.0	18.93	50,000	189,271	1	<650	<294	Up to 2	N/A
EV9329-73	High Flow CSR Triple 7FC	7.50	28.39	75,000	283,906	2	1201.0 - 1500.0	544.8 - 680.4	Up to 4	2
EV9329-44*	High Flow CSR Quad 4FC	10.00	37.85	60,000	227,125	3	1201.0 - 1500.0	544.8 - 680.4	Up to 4	2
EV9329-74*	High Flow CSR Quad 7FC	10.00	37.85	100,000	378,541	4+	1501.0+	680.8+	Multi	Multi
XC2 System										
EV9347-20*	High Flow CSR Plus XC ²	6.68	25.29	48,000	181,700	2	651.0 - 1200.0	295.3 - 544.3	Up to 4	1

REPLACEMENT CARTRIDGES

Performance

Benefits

Rating

Part Number	Model Name	Pack Size	Flow Rate		Rated Capacity		Micron Rating	Bacteriostatic Effects	Chlorine Reduction	Cyst Reduction [†]	Microplastics Reduction	Particulate Reduction [‡]	Taste & Odor Reduction	Turbidity Reduction	NSF Standard 42	NSF Standard 53	NSF Standard 401
			Gallons / Minute	Liters / Minute	Gallons	Liters											
EV9612-56	MC ²	1	1.67	6.3	9,000	34,000	0.2 [†]	•	•	•	•	•	•	•	•	•	•
EV9692-21	4FC	1	2.5	9.46	15,000	56,871	0.2 [†]	•	•	•	•	•	•	•	•	•	•
EV9692-61	7FC	1	2.5	9.46	25,000	94,635	0.2 [†]	•	•	•	•	•	•	•	•	•	•
EV9693-21	4FC5	1	2.5	9.46	15,000	6,781	5	•	•		•	•	•	•			
EV9693-61	7FC5	1	2.5	9.46	25,000	94,635	5	•	•		•	•	•	•			
EV9613-10	XC ²	1	1.67	6.3	12,000	45,425	0.2 [†]	•	•	•	•	•	•	•	•	•	•

* Not shown.

[†] Validated by ISO 17025 accredited lab for 99.999% reduction of *Pseudomonas diminuta* following the ASTM F838-05 protocol for the validation of 0.2 µm sterilizing grade filters

[‡] As Tested by Pentair.

^{††} By mechanical means.

EVERPURE HIGH FLOW CSR CLM+ SYSTEMS

Everpure solutions incorporate a primary active carbon filter designed to reduce particulates and help eliminate undesirable odors. A secondary filtration process ensures the delivery of quality water to fountain dispensers, coffee makers and ice machines. The SR-X feeder is equipped with an SS-XL ScaleStick® cartridge that effectively helps prevent the accumulation of scale and corrosion.

Applications

- Fountain beverages
- Coffee and tea
- Ice machines

Part Number	Model Name	Performance			
		Flow Rate		Rated Capacity	
		Gallons / Minute	Liters / Minute	Gallons	Liters
EV9771-32	High Flow CSR Twin-7CLM+	3.34	12.64	15,000	56,781
		2.66	10.07	19,000*	71,923*
		2.00	7.57	25,200*	95,392*
EV9771-33	High Flow CSR Triple-7CLM+	5.01	18.96	22,500	85,172
		4.00	15.14	23,500*	88,957*
		3.00	11.36	37,800*	143,089*
EV9771-34	High Flow CSR Quad-7CLM+	6.68	25.29	30,000	113,562
		5.33	20.18	38,000*	143,846*
		4.00	15.14	50,400*	190,785*
EV9761-32*	High Flow CSR Twin-XCLM+ (not shown)	4.00	15.14	18,600	70,409
		3.34	12.64	23,200*	87,822*
		2.00	7.57	38,600*	146,117*
EV9761-33*	High Flow CSR Triple-XCLM+ (not shown)	6.00	22.71	27,900	105,613
		5.01	18.96	34,800*	131,732*
		3.00	11.36	57,900*	219,175*
EV9761-34*	High Flow CSR Quad-XCLM+ (not shown)	8.00	30.28	37,200	140,817
		6.68	25.29	46,400*	175,643*
		4.00	15.14	77,200*	292,233*

High Flow CSR CLM+ systems come equipped with a EC210 Prefilter.



High Flow CSR Twin-7CLM+



High Flow CSR Triple-7CLM+



High Flow CSR Quad-7CLM+

REPLACEMENT CARTRIDGES

Part Number	Model Name	Pack Size	Performance				Benefits					Rating		
			Flow Rate		Rated Capacity		Micron Rating	Chloramines Reduction	Chlorine Reduction	Particulate Reduction†	Scale Inhibition	Taste & Odor Reduction	Turbidity Reduction	NSF Standard 42
			Gallons / Minute	Liters / Minute	Gallons	Liters								
EV9761-00	XCLM+	1	2.00	7.57	9,300	35,204	5.0	•	•	•	•	•	•	•
EV9771-00	7CLM+	1	1.67	6.32	7,500	28,391	5.0	•	•	•	•	•	•	•

* Not performance tested or certified by NSF.

† As tested by Pentair.

‡ By Mechanical means.



COMBINATION SYSTEMS

FILTRATION SYSTEMS



EVERPURE ENDURANCE® HIGH FLOW SYSTEMS

Elevate your peak water demands with the Endurance high-flow systems for high-volume fountain and combination applications. Up to 200,000 gallon [757,082 L] capacity and no electricity or drain required.

- Features SEN cartridges with proprietary Fibredyne™ media to reduce chlorine taste & odor and sediment
- Equipped with 2SR-BW phosphate cartridge (EV9627-14) for scale prevention
- Certified under NSF/ANSI standard 401 for Microplastics Reduction



EV9437-32
Endurance Quad High Flow

Performance

Part Number	Model Name	Flow Rate		Rated Capacity	
		Gallons / Minute	Liters / Minute	Gallons	Liters
EV9437-30	Endurance Twin High Flow	7.50	28.39	100,000	378,540
EV9437-31	Endurance Triple High Flow	11.25	42.59	150,000	567,810
EV9437-32	Endurance Quad High Flow (shown)	15.00	56.78	200,000	757,080

EVERPURE ENDURANCE SC HIGH FLOW SYSTEMS

- Features Everpure SEN Fibredyne fine filters with proprietary Fibredyne II media provides chlorine taste & odor, and filters sediment down to 0.2 microns
- Equipped with 2SR-BW phosphate cartridge (EV9627-14) for scale reduction
- Certified under NSF/ANSI Standard 401 for Microplastics Reduction



EV9437-42
Endurance SC Quad

Performance

Part Number	Model Name	Flow Rate		Rated Capacity	
		Gallons / Minute	Liters / Minute	Gallons	Liters
EV9437-40	Endurance SC Twin 1.0	7.50	28.39	100,000	378,541
EV9437-41	Endurance SC Triple 1.1	11.25	42.59	150,000	567,812
EV9437-42	Endurance SC Quad 1.1 (shown)	15.00	56.78	200,000	757,082

EVERPURE ENDURANCE REPLACEMENT CARTRIDGES

Part Number	Model Name	Pack Size	Performance				Benefits							Rating					
			Gallons / Minute	Liters / Minute	Gallons	Liters	Micron Rating	Bacteriostatic Effects	Chlorine Reduction	Cyst Reduction†	Microplastics Reduction	Particulate Reduction†	Scale Inhibition	Taste & Odor Reduction	Turbidity Reduction	NSF Standard 42	NSF Standard 58	NSF Standard 401	
			Flow Rate		Rated Capacity														
EV9627-14	2SR-BW	1	–	–	–	–	–	•											
EV9627-16	7FS-BW	1	2.5	9.5	30,000	113,560	5.0	•											
EV9692-65	SEN	1	3.75	14.20	50,000	189,270	0.2*	•	•	•	•	•	•	•	•	•	•	•	
Cartridge Kits			number of each cartridge in set																
			SEN	2SR-BW	Pre-treat														
EV9628-70	Endurance Twin Cartridge Kit	2	1	1	1 kit	7.5	28.4	100,000	378,541	0.2*	•	•	•	•	•	•	•	•	
EV9628-71	Endurance Triple Cartridge Kit	3	1	1	1 kit	11.25	42.6	189,270	567,812	0.2*	•	•	•	•	•	•	•	•	
EV9628-72	Endurance Quad Cartridge Kit	4	1	1	1 kit	15.0	56.8	200,000	757,082	0.2*	•	•	•	•	•	•	•	•	

* Not performance tested or certified by NSF.

† See individual system specification sheets for performance claims and FIFRA registration information.

‡ Validated by ISO 17025 accredited lab for 99.999% reduction of *Pseudomonas diminuta* following the ASTM F838-05 protocol for the validation of 0.2 µm sterilizing grade filters.

EPA Est. No. 002623-IL-002



Soft Water works hard

Untreated hard water can wreak havoc on everything from the feel of a hotel shower to the sparkle on your dishware. Pentair Everpure water softener systems can help reduce scale buildup so you can meet the required standards for your operation and deliver top-notch water.





WHERE YOU'LL SEE THE BENEFITS OF SOFT WATER

- Reverse osmosis pretreatment
- On-premise laundry
- Water heater scale reduction
- Machine warewashing



EVERPURE WATER SOFTENING SYSTEMS

Pentair Everpure provides a comprehensive line of commercial point-of-entry softeners designed to combat hard water and scale buildup in operations of varying sizes. These systems deliver peak performance and help ensure a consistent supply of exceptionally soft water throughout your operation.

System capacities include

- Hardness removal: 30,000 to 450,000 grains per tank
- Flow rate: 10.0 to 400 gpm [37.9 to 1,514 Lpm]

Features Pentair Fleck® brand control valves

- Recognized worldwide for reliability and performance. Available in both mechanical and electronic configurations.

Pentair Structural® time-tested resin tanks

- Durable, fiberglass-reinforced polyethylene tanks withstand up to 250,000 cycles without leaking.

Comprehensive savings

- The precision flow meter efficiently regenerates the system, resulting in savings on salt, water and electricity costs.

Never without softened water

- Available duplex, triplex and quadplex systems provide a continuous supply of soft water.

Five (5) years worry-free

- A complete system has a five-year limited warranty.



EVERPURE WS CABINET WATER SOFTENERS

This single-tank softener is designed for operations with low volume soft water usage and limited space.

- 3/4" porting
- Hardness removal capacity up to 30,000 grains at flow rates up to 10 gallons per minute (gpm) continuous
- Fleck 5600-SXT meter initiated regeneration
- Fiberglass-reinforced resin vessels helps reduce the risk of corrosion and equipment downtime
- Easily adjustable 5-cycle control

Performance

Part Number	Model Name	Capacity
EV9980-58	WS-30E: 120 VAC 50/60 Hz	30,000 grains @ 15.0 lbs. [6.8 kgs.] salt 24,000 grains @ 9.0 lbs. [4.1 kgs.] salt 20,000 grains @ 6.0 lbs. [2.7 kgs.] salt
EV9980-59	WS-30E: 230 VAC 50 Hz	20,000 grains @ 6.0 lbs. [2.7 kgs.] salt

High levels of dissolved (ferrous) iron and manganese (>5 ppm) can damage your resin. To prolong the lifespan of your water softener when these materials are excessively present, Pentair Everpure recommends a prefilter. Also, use salt that contains an iron-fighting additive or use a resin cleaner on a regular basis.

Salt Recommendation

Use high-quality salt for water softeners. We recommend using solar salt and pellets as an alternative. Rock salt is not recommended due to the higher level of impurities it may contain.

EVERPURE ELECTRONIC SOFTENING SYSTEMS

- Effortless and intuitive programming with LCD back-lit displays
- Networking capability enabling consistent programming across multiple softeners
- Self-diagnostic features with clear indicators for ease of service

Part Number	Model Name	Performance			Features							Applications												
		Rated Capacity @15 Lbs. Salt/Cu. Ft. (Grains)	Flow Rate Continuous @ 15 psi DP (gpm)	Flow Rate Intermittent @ 15 psi DP (gpm)	Porting (Inches)	NXT2 Digital Control/Meter	Easily Adjustable 5-cycle Control	Meter Initiated regeneration	Alternating Twin Tank	Duplex Parallel Progressive Flow	Triplex Parallel Progressive Flow	Quadplex Parallel Progressive Flow	Cold Water Fed Warewashing	Laundry: Linen/Uniform	Boiler Scale Control	Water Heater Scale Protection/Reduction	General Housekeeping	RO Pretreatment	Grocery	Hospitality	Tea Brewing	Retail	Cooling Towers	Whole Facility Applications
CES 2850E Series Single Tank Softeners for low to medium volume soft water usage																								
EV9983-31	CES-2850E-60	60,000	27	35	1.5	•	•	•						•	•	•	•	•	•	•	•	•	•	•
EV9983-32	CES-2850E-90	90,000	32	42	1.5	•	•	•						•	•	•	•	•	•	•	•	•	•	•
EV9983-33	CES-2850E-120	120,000	34	44	1.5	•	•	•						•	•	•	•	•	•	•	•	•	•	•
CES 2900E Series Single Tank Softeners for high volume soft water usage																								
EV9984-22	CES-2900E-120	120,000	47	60	2	•	•	•						•	•	•	•	•						
EV9984-23	CES-2900E-150	150,000	53	69	2	•	•	•						•	•	•	•	•						
EV9984-24	CES-2900E-210	210,000	57	74	2	•	•	•						•	•	•	•	•						
EV9984-25	CES-2900E-300	300,000	62	80	2	•	•	•						•	•	•	•	•						
CES 3900E Series Single Tank Softeners for high volume soft water usage																								
EV9980-32	CES-3900E-300-HWBP	300,000	74	96	3	•	•	•						•	•	•				•				
EV9980-33	CES-3900E-450-HWBP	450,000	100	129	3	•	•	•						•	•	•				•				
EV9980-76	CES-3900E-300-NHWB	300,000	74	96	3	•	•	•						•	•	•				•	•	•	•	•
EV9980-77	CES-3900E-450-NHWB	450,000	100	129	3	•	•	•	•*	•*	•*			•	•	•				•	•	•	•	•



CES 2850 Series



CES 2900 Series



CES 3900 Series

* Purchasing Requirements: Duplex, 2 units; Triplex, 3 units; Quadplex, 4 units.



SOFTENING ELECTRONIC SYSTEMS



Part Number	Model Name	Performance			Features				Applications																
		Rated Capacity @15 Lbs. Salt/Cu. Ft. (Grains)	Flow Rate Continuous @ 15 psi DP (gpm)	Flow Rate Intermittent @ 15 psi DP (gpm)	Porting (inches)	NXT2 Digital Control/Meter	Easily Adjustable 5-cycle Control	Meter Initiated regeneration	Alternating Twin Tank	Duplex Parallel Progressive Flow	Triplex Parallel Progressive Flow	Quadplex Parallel Progressive Flow	Cold Water Fed Warewashing	Laundry: Linen/Uniform	Boiler Scale Control	Water Heater Scale Protection/Reduction	General Housekeeping	RO Pretreatment	Grocery	Hospitality	Tea Brewing	Retail	Cooling Towers	Whole Facility Applications	
CES 9100 Series Twin Tank Softeners for low volume soft water usage and limited space																									
DEV998049	CES-9100E-24	22,987	8	—	0.75	•	•					•	•	•	•	•	•	•	•	•	•	•	•	•	•
EV9980-65	CES-9100TS-30	35,808	7.9	—	0.75	•	•					•	•	•	•	•	•	•	•	•	•	•	•	•	•
CES 9500E Series Twin Tank Softeners for low to medium volume soft water usage, continuous flow, no regeneration interruption																									
EV9986-00	CES-9500E-60	60,000	25	32	1.5	•	•	•				•	•	•	•	•	•	•	•	•	•	•	•	•	•
EV9986-01	CES-9500E-90	90,000	28	36	1.5	•	•	•				•	•	•	•	•	•	•	•	•	•	•	•	•	•
EV9986-02	CES-9500E-120	120,000	30	39	1.5	•	•	•				•	•	•	•	•	•	•	•	•	•	•	•	•	•
EV9986-03	CES-9500E-150	150,000	31	40	1.5	•	•	•				•	•	•	•	•	•	•	•	•	•	•	•	•	•
CES 2900DP Series Duplex Progressive Flow Softeners for high volume soft water usage																									
EV9984-42	CES-2900E-120-DP	120,000	94	121	2	•	•	•	•				•	•	•	•	•	•	•	•	•	•	•	•	•
EV9984-43	CES-2900E-150-DP	150,000	106	137	2	•	•	•	•				•	•	•	•	•	•	•	•	•	•	•	•	•
EV9984-44	CES-2900E-210-DP	210,000	114	148	2	•	•	•	•				•	•	•	•	•	•	•	•	•	•	•	•	•
EV9984-45	CES-2900E-300-DP	300,000	123	159	2	•	•	•	•				•	•	•	•	•	•	•	•	•	•	•	•	•
CES 2900TP Series Triplex Progressive Flow Softeners: high volume soft water usage																									
EV9980-67	CES-2900E-120-TP	120,000	141	181	2	•	•	•		•			•	•	•	•	•	•	•	•	•	•	•	•	•
EV9980-68	CES-2900E-150-TP	150,000	159	206	2	•	•	•		•			•	•	•	•	•	•	•	•	•	•	•	•	•
EV9980-69	CES-2900E-210-TP	210,000	171	222	2	•	•	•		•			•	•	•	•	•	•	•	•	•	•	•	•	•
EV9980-70	CES-2900E-300-TP	300,000	185	239	2	•	•	•		•			•	•	•	•	•	•	•	•	•	•	•	•	•
CES 2900QP Series Quadplex Progressive Flow Softeners: high volume soft water usage																									
EV9980-71	CES-2900E-120-QP	120,000	188	242	2	•	•	•			•		•	•	•	•	•	•	•	•	•	•	•	•	•
EV9980-72	CES-2900E-150-QP	150,000	212	274	2	•	•	•			•		•	•	•	•	•	•	•	•	•	•	•	•	•
EV9980-73	CES-2900E-210-QP	210,000	228	296	2	•	•	•			•		•	•	•	•	•	•	•	•	•	•	•	•	•
EV9980-74	CES-2900E-300-QP	300,000	248	318	2	•	•	•			•		•	•	•	•	•	•	•	•	•	•	•	•	•



CES 9100 Series



CES 9500 Series



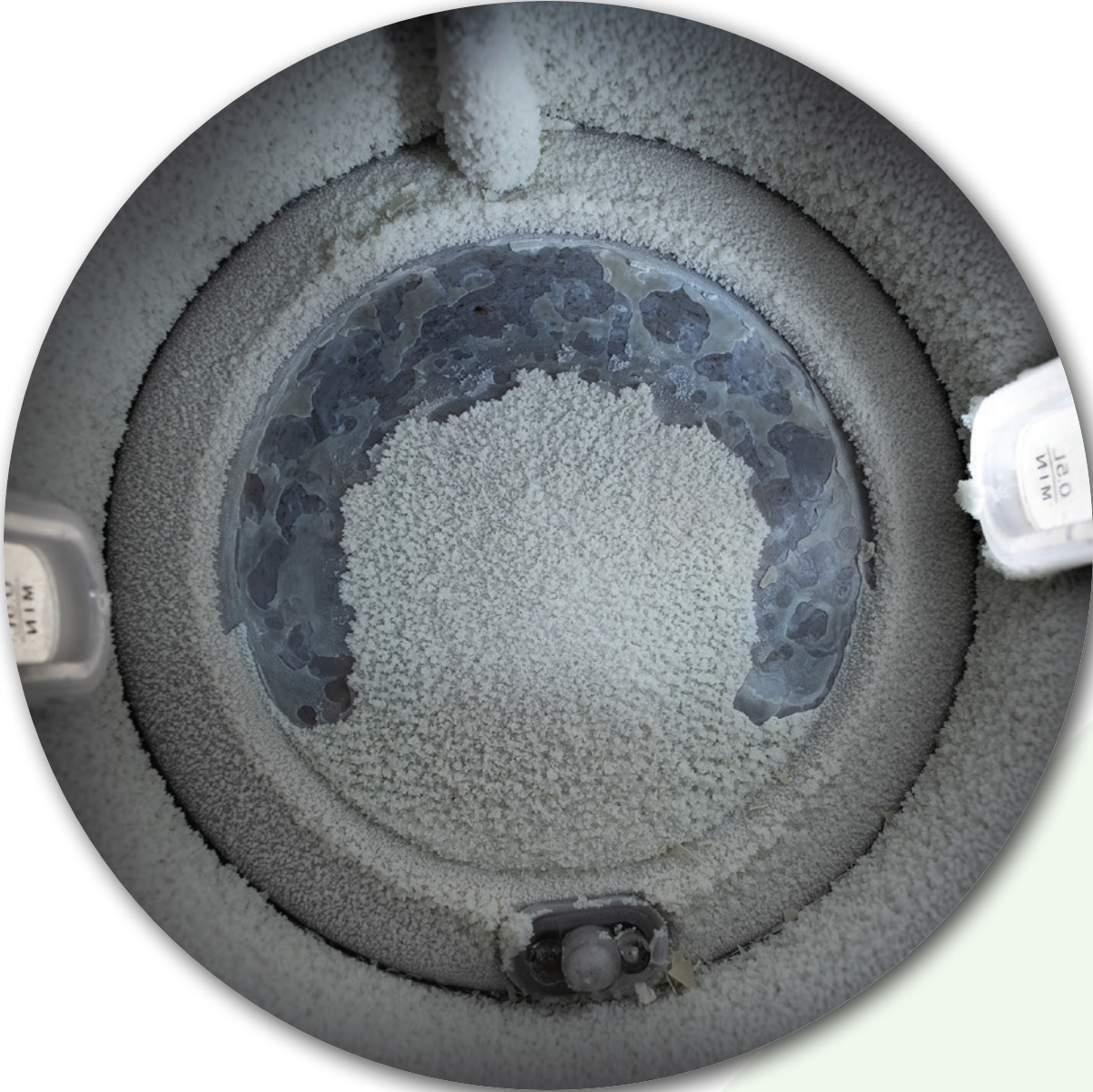
CES 2900DP Series



CES 2900TP Series



CES 2900QP Series



Say Goodbye To Frequent Deliming and hello to equipment longevity!

Water often bears a heavy load of chemicals, dissolved solids and stubborn sediments, all ready to take a toll on your equipment. Pentair water solutions equipped with a scale inhibitor, can reduce scale buildup, curb corrosion, and safeguard your valuable water-using equipment investment.





EVERPURE 2SR-BW FEEDER KITS

- Equipped with integrated scale inhibitor to help prevent mineral scale buildup that can cause corrosion inside ice machines and coffee brewing applications
- Includes an additional scale inhibitor to the Everpure Endurance® High Flow system ideal for multiple machines at one location
- 2SR-BW Endurance feeder kit to be used with the Everpure Endurance high flow system
- 2SR-BW QL2 general purpose feeder kit to be used with any Everpure high flow system
- Easy, quick-change replacement cartridge



2SR-BW QL2
General Purpose Feeder Kit



2SR-BW
Endurance Feeder Kit

Part Number	Model Name
EV9798-70	2SR-BW Endurance Feeder Kit
EV9798-75	2SR-BW QL2 General Purpose Feeder Kit

Replacement Cartridge

Part Number	Model Name	Benefit
EV9627-14	2SR-BW	Scale Inhibition

EVERPURE SR-X SCALE INHIBITOR SYSTEM

The scale inhibitor and deliming systems are designed to reduce scale buildup on commercial warewashing and steam equipment. These attributes work to reduce corrosion and help to enhance the overall effectiveness and durability of your equipment.

- Utilizes Hydroblend™ compound, ideal for high temperature locations
- Housing converts to ScaleKleen® Feeder for periodic delimings
- System includes 10" (25.4 cm) heavy-duty housing, dip tube assembly, 2.2 lbs of ScaleKleen scale remover, and hardness test strip
- Ideal for locations with higher demands for scale control, the Everpure SS-XL ScaleStick® cartridge (sold separately) delivers a scale reduction capacity up to four (4) times greater than the SS-IMF cartridge. It conveniently fits most standard 10.0" [25.4] cm housings and all existing SR-X housings.



SR-X Scale Inhibitor Feeder



SS-10



SS-XL

Part Number	Model Name/Description
EV3114-35	Wing Bracket Assembly
EV9627-14	2SR-BW Cartridge (Scale Inhibition)
EV9797-20	SR-X Scale Inhibitor System with Deliming Kit
EV9798-45	SR-X Scale Inhibitor Feeder with ScaleStick
EV9799-02	SS-10 Cartridge for use with SR-X Housing in coffee, combination & steamer applications
EV9799-32	SS-IMF Cartridge for use with SR-X Housing in ice applications; also compatible to legacy IMF 8" housings
EV9799-42	SS-XL Cartridge for use with SR-X Housing for high capacity scale reduction applications

EVERPURE DELIMING/SCALE REMOVAL SYSTEM

Help ensure the efficiency and performance of your water-using equipment with these Pentair Everpure solutions.



HFC-10



HFC-10 is connected to the hot water line for effortless delimiting of equipment, using ScaleKleen scale remover. Includes high temperature 10.0" [25.4 cm] housing, 2.2 lbs. [1.0 kgs.] ScaleKleen scale remover, a hardness test strip and dip tube for convenience.



ScaleKleen

Easy-to-use descaling compound



OptiClean

Non-Toxic, biodegradable descaling compound helps remove carbonate, lime-scale and iron scale buildup caused by hard water.

Part Number	Model Name	Size	Pack Size
EV9100-91	HFC-10 Delimiting	12.50" H x 5.50" W x 5.50" D	1
EV9798-33	ScaleKleen Scale Remover (Eng/French/Spanish)	7 ozs [200 grams] packets	24 packs/case
EV9798-35	ScaleKleen Scale Remover (Eng/French/Spanish)	2.20 lbs. [1 kg.] canister	4 canisters/case
150-50026	OptiClean - Descaling Compound	4.0 lbs. [1.81 kgs.] bottle	4 bottles/case

EVERPURE JT FLUSHING & SANITIZING REPLACEMENT FILTERS

The Everpure JT flushing and sanitizing replacement cartridges are an easy and convenient way to introduce ScaleKleen scale remover or other sanitizing agents into water-using appliances through an existing Everpure filter head.

Part Number	Model Name	Pack Size
EV9608-00	4JT Flushing/Sanitizing Cartridge	1
EV9608-10	2JT Flushing/Sanitizing Cartridge	1



4JT



Delimiting with the combined power of the Everpure ScaleKleen and JT cartridge

1. Turn off the inlet water supply, remove and discard existing filter cartridge.
2. Remove TOP PLUG from the JT can and pour in ScaleKleen.
 - **Small steam ovens** use 2.2 lbs. [1.0 kgs.]
 - **Large steam ovens** (>10 kW or >100,000 BTU) use two (2) JT cans
 - **Coffee makers** brewing one pot (1/2 gallon) per cycle, use one (1) 2.2 lbs. [1.0 kgs.] package
3. REPLACE TOP PLUG, insert the JT cartridge(s) into the head assembly, and turn the inlet water on.
4. When the steps below are complete, replace the JT can with a new Everpure filter.

COFFEE Application

1. Remove the filter basket and the spray head and dump the coffee grounds. Place the spray head into the target coffee pot.
2. Cycle coffee maker once, vending one (1) pot. Let it sit for 30 minutes.
3. After 30 minutes, cycle coffee maker with ten (10) pots of fresh water to flush the ScaleKleen from brewer. Check the pH of the hot water - if it's within one (1) pH unit of the incoming cold water, the ScaleKleen is flushed out.

STEAM Application

1. Flush the JT cartridge until one (1) gallon of water has passed through. (Note: a flow rate of 2 gpm [7.57 Lpm] equals two (2) minutes).





EVERPURE WAREWASHING

Hot Temperature Scale Control

- Tailored for warewashing and booster heater applications
- Helps prevent limescale buildup while reducing corrosion
- Equipped with flow metering system, high-temperature housing, and a transparent HT-10 cartridge filled with Hydroblend™ compound, providing reliable performance up to 200°F [93.3°C], at a flow rate of 15.0 gpm [56.8 Lpm]
- Maximum inlet temperature for the feeder: 170.0°F [76.7°C]

Part Number	Model Name
158319	#10 Slim Line Black Housing
EV9799-11	Kleenware HTS-11
EV9799-22	HT-10 Replacement Cartridge



Kleenware® HTS-11
Scale Control System



HT-10 Replacement
Cartridge



#10 Slim Line®
Black Housing

Visit pentair.com for more softener product information and additional mechanical softener system SKUs.





Shurflo® Beverage Pumps deliver refreshment

Shurflo beverage bib pumps leverage hydraulic pressure and straight-through, flow-path design help optimize performance by minimizing pressure drop.



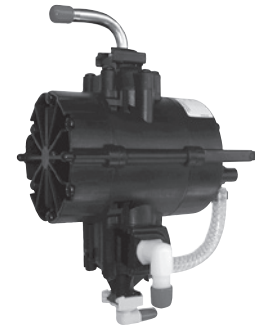


SHURFLO GENERAL BEVERAGE BIB PUMPS

These heavy duty, gas-driven (CO₂ / air) diaphragm pumps dispense and deliver bag-in-box syrups, teas, juices, and wines to your beverage equipment. They feature a straight-through flow path to help maximize performance by reducing pressure drop. An automatic built-in shutoff is triggered when the bag is empty and restarted when the bag is connected for easy operation.

- Operating pressure up to 85 PSI (5.86 bar) ideal for all pumping applications
- Automatic demand and valve shutoff
- High volume per stroke for maximized pump life

Part Number	Liquid In	Liquid Out	Gas In	Mounting Bracket	Application				
	Yellow Clip	3/8" [10 mm] Barb Plastic Elbow		3/8" [10 mm] Barb Stainless Steel Elbow		1/4" [6 mm] Barb Stainless Steel Elbow	1/4" [6 mm] Barb Plastic Elbow W/Check Valve	1/4" [6 mm] Barb Plastic Tee W/Check Valve	Standard Mount
94-360-00	•	•		•					12
94-360-38	•	•	•	•					12
94-360-40	•	•	•	•					12
94-366-48	•	•	•	•	•			•	12
94-366-49	•	•	•	•	•			•	12
94-366-50	•	•	•	•	•			•	12



SHURFLO ELECTRIC BEVERAGE DELIVERY PUMP SYSTEM

The Shurflo 8000 pump series is designed for high-pressure applications with low flow rates, such as boost systems, misters, or sprayers are engineered with robust components and can provide consistent operation and performance.

- Self-priming up to 8.0 vertical feet [2.4 m]
- Flow rates up to 1.5 gpm [5.7 Lpm]
- Includes a built-in check valve
- 12 or 24 VAC requires customer provided low voltage power supply

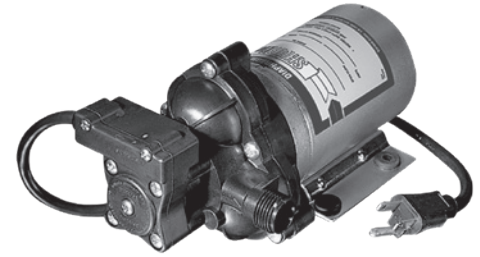


Part No	Description	Pressure		Flow		Charge	Pack Size
		psi	bar	gpm	lpm	Amps	
8005-233-236	115 VAC, 1.5 gpm [5.7 Lpm] open flow, Santoprene® diaphragm, 60 PSI [4.1 bar], demand switch, 3/8" [10 mm] NPT-female ports, NSF-listed, non-corded	20	1.4	1.26	4.70	0.48	6
		40	2.8	1.07	4.00	0.57	
		50	3.4	0.99	3.70	0.61	
		60	4.1	0.94	3.50	0.66	
8005-733-155	115 VAC, 1.5 gpm [5.7 Lpm] open flow, Santoprene diaphragm, 60 PSI [4.1 bar], demand switch, with 45 PSI [3.1 bar] internal bypass, 1/2" [12.7 mm] NPT male ports, NSF-listed, non-corded	20	1.4	1.26	4.90	0.40	6
		40	2.8	0.67	2.50	0.49	
		60	4.1	0.05	0.10	0.54	
8005-733-255	115 VAC, 1.5 gpm [5.7 Lpm] open flow, Santoprene® diaphragm, 60 PSI [4.1 bar], demand switch, with 45 PSI [3.1 bar] internal bypass, 3/8" [10 mm] NPT-female ports, NSF-listed, non-corded	20	1.4	1.26	4.90	0.40	6
		40	2.8	0.67	2.50	0.49	
		60	4.1	0.05	0.10	0.54	
8005-991-820	24 VAC, 1.1 gpm [4.2 Lpm] open flow, Santoprene® diaphragm, 45 PSI [3.1 bar] internal bypass, female 3/8"-18 NPT, NSF-listed, non-corded	10	0.7	0.86	3.30	1.20	6
		20	1.4	0.81	3.10	1.40	
		30	2.1	0.68	2.60	1.60	
		40	2.8	0.37	1.40	1.80	

SHURFLO 2088 SERIES PUMPS

Shurflo 2088 series pumps help deliver consistent water flow performance for high-flow, moderate-pressure applications such as beverage and water applications for city water pressure boost, portable cart water delivery, batch and transfer of product. Equipped with various flow rates, voltage ratings, pressure tolerances, and other features, these electric pumps provide ease of operation and equipment longevity.

- Self-priming up to 12.0 vertical lift feet [3.7 m]
- Used in delivery and transfer applications up to 3.0 gpm [11.4 Lpm]
- UL/CSA-recognized components
- Includes a built-in check valve
- Automatic turn on / shutoff
- Exceptional dry-run resistance without harm
- A customer-supplied power source is required



Part Number	Description	Pressure		Flow		Charge	Pack Size
		psi	bar	gpm	lpm	Amps	
2088-443-144	12 VDC, 3.0 gpm [11.4 Lpm] open flow, Santoprene® valves, Santoprene diaphragm, 45 PSI [3.1 bar], shutoff, 1/2"-14* NPT male ports	10	0.7	2.80	10.60	5.80	6
		20	1.4	2.50	9.50	7.00	
		30	2.1	2.30	8.70	8.00	
		40	2.8	2.00	7.60	9.10	
2088-474-144	24 VDC, 3.0 gpm [11.4 Lpm] open flow, Santoprene valves, Santoprene diaphragm, 45 PSI [3.1 bar], shutoff, 1/2"-14* NPT male ports	10	0.7	2.80	10.60	2.14	6
		20	1.4	2.25	8.50	2.63	
		30	2.1	1.75	6.60	2.73	
		40	2.8	1.25	4.70	2.71	
2088-554-144	12 VDC, 3.5 gpm [13.2 Lpm] open flow, Santoprene valves, Santoprene diaphragm, 45 PSI [3.1 bar], shutoff, 1/2"-14 NPT male thread, NSF-listed	10	0.7	2.80	10.70	0.60	6
		20	1.4	2.50	9.70	0.70	
		30	2.1	2.30	8.70	0.80	
		40	2.8	2.00	7.60	0.85	
2088-594-144	115 VAC, 3.3 gpm [12.5 Lpm] open flow, Santoprene valves, Santoprene diaphragm, 45 PSI [3.1 bar], shutoff, 1/2"-14* NPT male ports, NSF-, UL-, and CUL-listed, corded	10	0.7	2.60	9.80	0.58	6
		20	1.4	2.34	8.80	0.67	
		30	2.1	2.08	7.90	0.76	
		40	2.8	1.85	6.20	0.94	
2088-594-154	115 VAC, 3.3 gpm [12.5 Lpm] open flow, Santoprene valves, Santoprene diaphragm, 45 PSI [3.1 bar], shutoff, 1/2"-14* NPT male ports, NSF-, UL-, and CUL-recognized, non-corded	10	0.7	2.60	9.80	0.58	6
		20	1.4	2.34	8.80	0.67	
		30	2.1	2.08	7.90	0.76	
		40	2.8	1.85	6.20	0.94	





SHURFLO WATER BOOST SYSTEMS

Increased water usage combined with fluctuating city water flow and pressure can adversely impact operational performance. Add a Shurflo Water Boost System to enhance the efficiency and performance of your beverage equipment.



Shurflo MINI Water Boost Systems

Part Number	Volts	PSI/Bar		Tank		Connection
		oz	ml	Inlet/Outlet		
804-001	115 VAC	60 / 4.14	21	621	1/4" & 3/8" barb	
804-002	115 VAC	90 / 6.21	21	621	3/8" barb	
804-042	100-240 VAC	90 / 6.21	21	621	3/8" barb	

Note: Contact factory for additional 230 VAC options



Shurflo MEDIUM Boost Systems

Part Number	Volts	PSI/Bar		Tank		Connection
		oz	ml	Inlet/Outlet		
804-023	115 VAC	90 / 6.21	2.0	7.6	3/8" barb	
804-034	100-240 VAC	90 / 6.21	2.0	7.6	3/8" barb	



Shurflo MAXI Boost Systems

Part Number	Volts	PSI/Bar		Tank		Connection
		oz	ml	Inlet/Outlet		
804-026	115 VAC	90 / 6.21	6.0	22.7	1/2" barb	
804-037	115 VAC	90 / 6.21	6.0	22.7	3/8" barb	
804-064	115 VAC	90 / 6.21	6.0	22.7	1/2" NPT	
804-065	115 VAC	90 / 6.21	6.0	22.7	3/4" NPT	
804-067	100-240 VAC	90 / 6.21	6.0	22.7	3/4" NPT	
804-068	100-240 VAC	90 / 6.21	6.0	22.7	1/2" barb	

Note: Contact factory for additional 230 VAC options



Shurflo Integrated MEDIUM Water Boost & Filtration Systems

Part Number	Volts	PSI/Bar		Tank		Connection
		oz	ml	Inlet/Outlet		
WB2-LVPO-01	115	90 / 6.21	2.0	7.6	3/8" barb	
WB2-LVPO-02	100-240 VAC	90 / 6.21	2.0	7.6	3/8" barb	



Water Boost Sizing	Annual Usage		Number of Dispensers				
	VPO Syrup		Water Consumption				
	GALLONS	LITERS	GALLONS	LITERS	ONE	TWO	THREE
0 - 1000	0 - 3785	0 - 5000	18,927	2.0 gallon [7.6 L] Medium WB 804-023	2.0 gallon [7.6 L] Medium WB 804-023	2.0 gallon [7.6 L] Medium WB 804-023	
1000 - 1500	3785 - 5678	5000 - 7500	18,927 - 28,391	2.0 gallon [7.6 L] Medium WB 804-023	2.0 gallon [7.6 L] Medium WB 804-023	6.0 gallon [22.7 L] Maxi WB 804-026	
1500 - 2000	5678 - 7571	7500 - 10,000	28,391 - 37,854	2.0 gallon [7.6 L] Medium WB 804-023	2.0 gallon [7.6 L] Medium WB 804-023	6.0 gallon [22.7 L] Maxi WB 804-026	
2000+	7570+	10,000+	37,854+	2.0 gallon [7.6 L] Medium WB 804-023	6.0 gallon [22.7 L] Maxi WB 804-026	6.0 gallon [22.7 L] Maxi WB 804-026	

WATER TESTING KITS

Water isn't simply composed of H₂O; it contains tiny amounts of minerals, organic matter and other particulates that can greatly influence the quality, safety, and flavor of the food and beverages served to customers. Additionally, water quality plays a significant role in determining how often costly foodservice equipment needs maintenance and how long it lasts.

Because water quality varies from place to place, conducting water tests at each location is essential. Pentair offers several water testing options, including the new H₂O Express Test Kit.

Product	Part Number	Description	Pack Size
Digital Pocket TDS Meter	EV6500-20	0-9990 ppm TDS; temperature reading 32-176°F [0-80°C]; reading "hold" function with soft case	1
Claris™ Test Kit	EV4339-40	Titration test for carbonate hardness, necessary for properly setting the bypass dial on Claris systems	1
H ₂ O Express Test Kit	EV6501-01	Analysis for 15 contaminants. Pentair review of analysis and equipment recommendation	1
H ₂ O Express Test Kit	EV6501-06	Analysis for 15 contaminants. Pentair review of analysis and equipment recommendation	6
H ₂ O Express Test Kit*	EV6502-06	Analysis for 15 contaminants. Pentair review of analysis and equipment recommendation with counter display	6
Standard Foodservice Water Analysis	DEV7013-73	Includes water bottle and lab analysis of 30 contaminants and characteristics	1
Standard Foodservice Organics Analysis	DEV9800-15	Includes water bottle and lab analysis of 30 contaminants plus TTHMs, VOCs and bacteria	1

* Sold in case of six (6) with display.



Digital Pocket TDS Meter: EV6500-20



H₂O Express Test Kit: EV6501-01



A background image showing water splashing into a glass, with a white text box overlaid on the left side.

FILTRATION BENEFITS FOR OPERATORS

A few of the ways that water filtration benefits foodservice operations:

Beverage quality

- **Coffee:** enhanced extraction for a milder, less bitter taste
- **Espresso:** achieves a smooth, rich flavor with perfect cream
- **Iced Tea:** crisp, clean taste, free from any cloudiness
- **Drinking Water:** reduces chlorine taste and smell
- **Fountain Beverage:** elevates fizz and flavor profile
- **Ice:** produces solid, crystal-clear ice cubes
- **Brewed Tea:** improved flavor extraction

Minimize equipment downtime and extended foodservice equipment lifespan

- **Coffee Brewers:** reduced scale on heating elements and fewer issues with valves, solenoids and reservoirs
- **Espresso Brewers:** reduced scale on heating elements, decreased stress cracking in boilers, and improved pressure
- **Fountain Beverage Systems:** ensure a consistent beverage profile with the right filtration equipment
- **Ice Machines:** reduced scaling and less downtime due to freezing and bridging issues
- **Steam and Combi Ovens:** reduced limescale, less corrosion, and improved steam consistency
- **Warewashing:** spotless dishes and glassware, and enhanced energy efficiency

Sustainability

- **Energy Savings:** mitigating the impact of hard water and scale buildup on equipment can conserve energy efficiency and help reduce utility costs
- **Water Conservation:** implementing Pentair Everpure high efficiency reverse osmosis systems to achieve 80% reduction in water waste compared to traditional RO systems
- **Waste Reduction:** Eliminating bottled water in favor of on-site filtered water can play a vital role in reducing environmental waste

Pentair Everpure is water. We have a solution whether you need filtration, softening or reverse osmosis. Our entire existence revolves around providing the best, most consistent water anywhere. That's why so many foodservice operators depend on us to solve their water problems. Pentair Everpure has been a leading global provider of quality water solutions for the foodservice industry for more than 90 years.

PENTAIR EVERPURE SOLUTIONS OFFER:

Consistency. Reduce unwanted minerals, particulates and chemicals to ensure consistently clearer water.

Confidence. Pentair Everpure products have a proven track record of effectiveness, trusted by foodservice operations worldwide.

Solutions. Our Total Water Management Program offers tailored solutions to address your water-related challenges. We'll assess your operation, provide recommendations, install the right products and offer ongoing maintenance support.



THE RISK OF COUNTERFEIT FILTER CARTRIDGES

- Pentair Everpure heads and cartridges are certified as systems by NSF. Using counterfeit filters results in a loss of this valuable industry certification.
 - Without NSF certification, there is no assurance of performance and quality could be suspect.
 - For over 90 years, Pentair Everpure has been providing quality filtration products for customers worldwide, and today we're a leading brand of water treatment for foodservice. We're trusted by many of the world's largest foodservice and specialty beverage chains, as well as hundreds of thousands of independent operators.
 - The majority of our cartridges are certified by NSF. This provides assurance that the system has been independently evaluated to confirm its performance.
 - Certified Everpure filtration products have been submitted for testing under NSF/ANSI Standards 42, 53, 58, and 401.
- The certification is displayed on the cartridge's label along with the applicable NSF claims.
- For further information on NSF certification, please contact Technical Service at 800.942.1153 / 630.307.3000 or consult the NSF website at www.nsf.org.

System Tested and Certified by NSF International against NSF/ANSI Standards 42, 53, and 401 for the reduction of:

STANDARD NO. 42 – AESTHETIC EFFECTS
 Bacteriostatic Effects [I]
 Chemical Reduction
 Taste and Odor [IV]
 Chlorine [V]
 Mechanical Filtration
 Nominal Particulate Class I [III]

STANDARD NO. 53 – HEALTH EFFECTS
 Mechanical Filtration
 Cyst [I (c)]
 Asbestos

STANDARD NO. 401 – EMERGING COMPOUNDS / INCIDENTAL CONTAMINANTS
 Mechanical Filtration
 Microplastics



The importance of NSF Certification

There are important reasons to look for NSF Certification when purchasing a water filter:

- **Performance claims may be based on internal testing only.** Do you have access to all the testing procedures used? Was testing done to industry standards?
- **Sometimes stated capacities are misleading because they may be based on only chemical (chlorine) reduction and don't take particulates into consideration.** Particulates have an important role in how long a filter will last. Most often, a filter plugs from dirt before the chemical capacity is used up.
- **In capacity claims, it's not always clear what percentage of chemical contaminants are actually reduced.** For example, if there is only a 50% reduction in chlorine then higher capacities can be claimed. But is removal of only half the chlorine acceptable for quality beverages?

NSF Certification ensures that:

- **The contaminant reduction claims certified are true and accurate.**
- **The materials of construction do not add anything unwanted to the water such as lead.**
- **The system is structurally sound.**
- **Advertising claims are true and accurate.**

*It's important to read the small print when evaluating a product certification. Within Standards 42 and 53, there are different classes and contaminant removals to consider. Even though a filter is certified for a standard, it may not be certified for all of the reductions possible within that standard.

What is NSF?

- **Founded in 1944, NSF is a not-for-profit** organization that provides public health and safety risk management solutions to companies, governments and consumers around the world.
- **Their main business is to bring together experts in public health, manufacturing, and sanitation** from government, industry, academia and the public to develop and administer performance standards for products which have some impact on sanitation and public health.
- **NSF maintains state-of-the-art laboratories** where products can be tested according to set standards.

For water filters, look for these certifications:*

- **NSF/ANSI Standard 42: Aesthetic Effects**
For water treatment systems designed to reduce specific aesthetic or non-health-related contaminants (chlorine, taste & odor, and particulates).
- **NSF/ANSI Standard 53: Health Effects**
For water treatment systems designed to reduce specific health-related contaminants, such as *Cryptosporidium*, *Giardia*, lead, volatile organic chemicals (VOCs), MTBE (methyl tertiary-butyl ether).
- **NSF/ANSI Standard 58 Reverse Osmosis**
For Reverse Osmosis water treatment systems designed to reduce specific aesthetic and/or health-related contaminants (TDS, Arsenic VI, Selenium).
- **NSF/ANSI Standard 401: Emerging Contaminants**
For water treatment systems designed to reduce specific emerging compounds / incidental contaminants (Microplastics, pharmaceuticals, pesticides, fire retardants).





1040 Muirfield Drive | Hanover Park, IL 60133 | 800.942.1153 (US Only) 630.307.3000 Main | cseverpure@pentair.com | foodservice.pentair.com

All indicated Pentair trademarks and logos are property of Pentair. Third party registered and unregistered trademarks and logos are the property of their respective owners.

© 2024 Pentair. All rights reserved.

EV7018-15 MR24