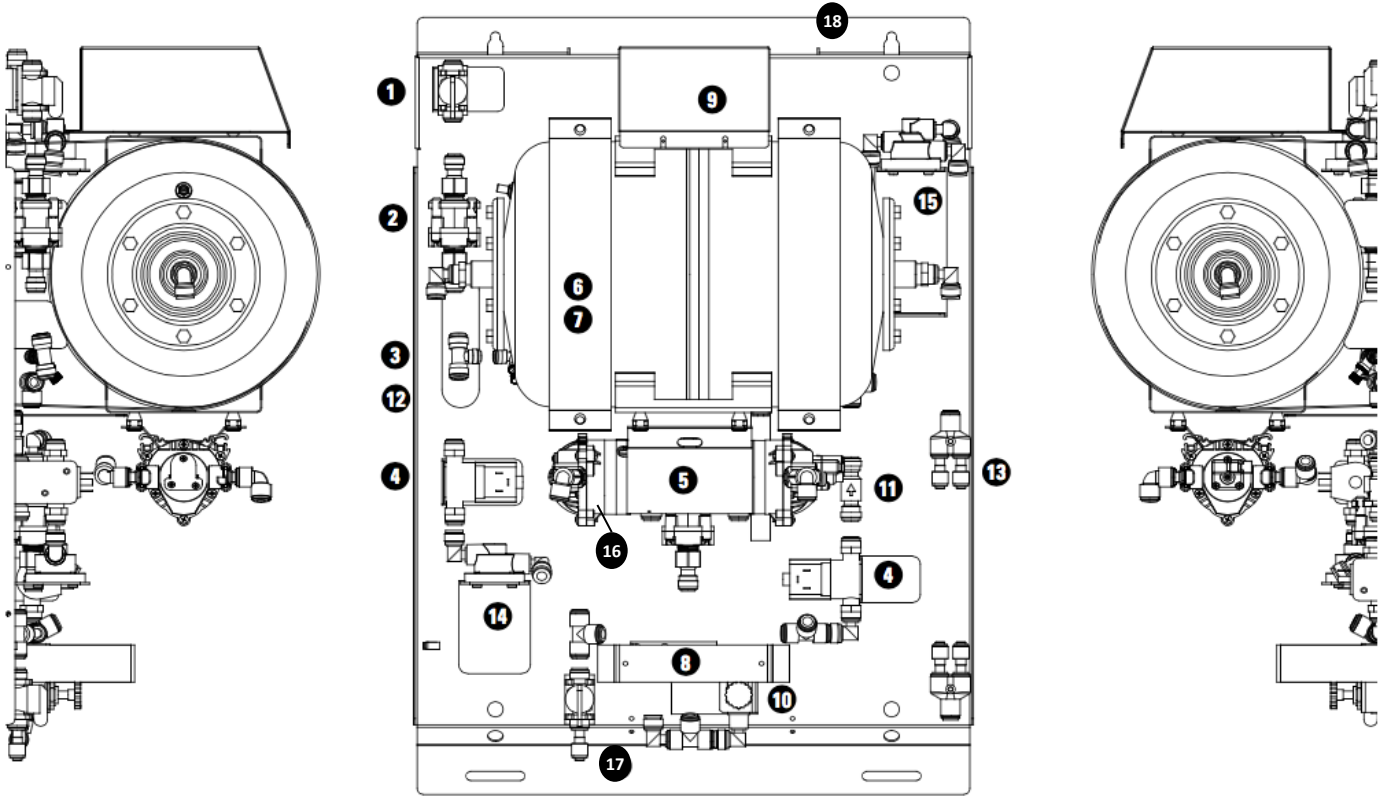


MRS 600 HE I - Reverse Osmosis System

Parts Diagram

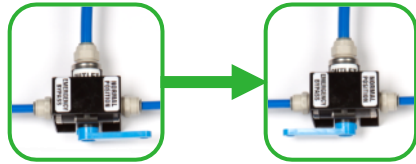


1	RO Inlet Valve, Ball, 3/8" PI x 3/8" PI
2	Pressure Reducing Valve
3	Valve, Control (FBV)
4	Valve, Solenoid
5	Booster Pump
6	Accumulator Tank
7	Bladder
8	Controller
9	Power Supply
10	Valve, Needle (DBV)
11	Check Valve, 3/8"
12	Check Valve, 1/4"
13	Capillary Restrictor
14	Cartridge – 2SR-BW
15	Cartridge – MR-600
16	Cartridge – Inline Filter GS-215RO-H
17	Tank drain valve
18	Outlet valve

MRS 600 HE I - Reverse Osmosis System

Maintenance Instructions

Step 1:
Put RO unit in emergency by-pass



Step 2:
Unplug the RO power supply (9).

Step 3:
Close the water inlet (1) and the RO water outlet (18) valves.

Step 4:
Hold a container under the Storage tank drain valve (17) to catch any excess water. Now open this valve to relieve line pressure. Close this valve.

Step 5: Remove old 2SR-BW Cartridge (1pc)
Hold head firmly and turn the cartridge (14) to left until it stops. Pull cartridge downward and out of head.

Step 6: Remove old Post carbon Cartridge (1pc)
Disconnect the 3/8" tubing from the inlet and outlet of the cartridge (16). Note flow direction. Cut the tie strap and remove the old Post carbon cartridge.

Step 7: Install new 2SR-BW Cartridge (1pc)
Hold head firmly. Align cartridge lug with label. Insert new cartridge (14) firmly into the rear part of the head. Turn cartridge right 90° until rotation stops.

Step 8: Install new Post carbon Cartridge (1pc)
Install new cartridge (16) in the same flow direction as original cartridge. Use new tie strap to secure and re-connect the 3/8" tubing to the inlet & outlet.

Step 9: Flush & purge new 2SR-BW Cartridge
Disconnect the 3/8" tubing from the SR cartridge going to the inlet of the Booster pump (5). Route this line into a bucket. Plug in the RO power cord. Route another line from the 3/8" storage tank drain valve (17) to drain temporarily. Open inlet valve (1) and storage tank drain valve (17). Drain water until system starts processing water. Flush 1 gallon of water at a solid flow. Unplug power cord. Close storage tank drain valve & inlet valve. Re-connect the 3/8" tubing from the SR cartridge going to the Booster pump.

Step 10: Flush & purge new Post carbon Cartridge (1pc)

Open storage tank drain valve (17) and drain the storage tank (6). Plug in the RO power cord. Open inlet valve (1). Flush 5 gallons of water from the tank drain (17) at a solid flow. Close storage tank drain valve (17).

Step 11: Remove the old Membrane Cartridge

Put RO unit in emergency by-pass and unplug the RO power supply (9). Close the inlet (1) and outlet valve (18) to the RO unit. Hold a container under the storage tank drain valve (17) and open the valve to relieve line pressure. Close this valve. Hold the head firmly and turn the RO cartridge (15) to the left until it stops. Pull the cartridge downwards and out of the head.

Step 12: Install new Membrane Cartridge

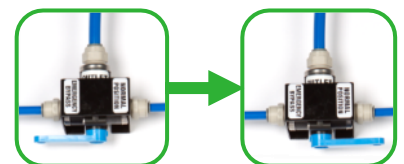
Hold head firmly. Align cartridge lug with label. Insert new cartridge (15) firmly into head. Turn cartridge right 90° until rotation stops.

Step 13: Flush & purge new RO Cartridge

- Remove capillary restrictors (13) temporarily.
- Route a line from the 3/8" storage tank drain valve (17) to drain temporarily. Open the RO inlet (1) and storage tank drain valve.
- Plug in the RO power supply (9).
- Direct the water through the tank drain valve (17) to a drain for at least 10 minutes. A solid water flow is required during the flush cycle.
- Close the Storage tank drain valve (17).
- Unplug RO power supply. Re-install capillary tubes (13).

Step 14: Put RO unit in to service

- Ensure that the Storage tank drain valve (17) is closed.
- Open the RO inlet valve (1) and the RO water outlet valve (18).
- **Remove RO** from emergency by-pass mode.
- Plug-in RO power supply (9).



To be done only once a year