



WATER YOU CAN TRUST[®]

Commercial Grade Water Filtration
for the Home



PENTAIR.COM





OUR MISSION

Pentair delivers smart, sustainable solutions that empower our customers to make the most of life's essential resource.

INSTALL AN EVERPURE SYSTEM ANYWHERE CLEAN, QUALITY WATER IS DESIRED:



Kitchen



Prep Sink



Pot Filler



Wet Bar



Ice Maker



Bathroom



Coffee Maker

TABLE OF CONTENTS

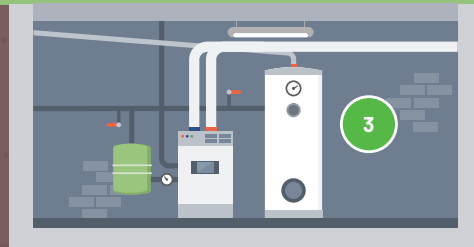
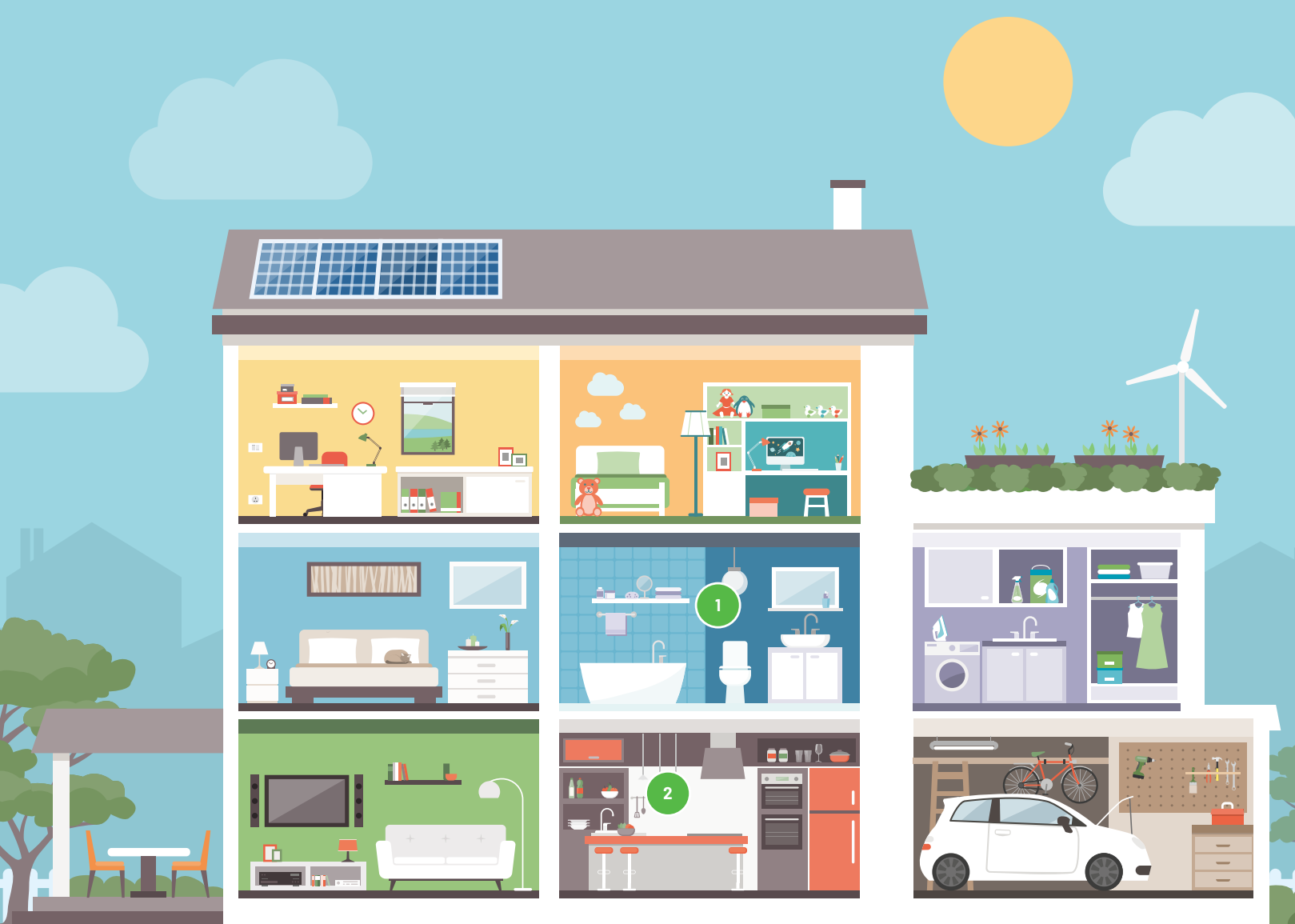
- | | |
|---|---|
| 1 PROTECTION FOR THE WHOLE HOUSE | 14 DEDICATED FAUCETS FOR EVERPURE FILTRATION SYSTEMS |
| 2 THE PENTAIR® EVERPURE® ADVANTAGE | 15 INLINE WATER FILTERS |
| 4 CHOOSING THE BEST EVERPURE SYSTEM FOR FILTERING CONTAMINANTS IN YOUR WATER | 16 WHOLE HOUSE FILTERS |
| 5 DRINKING WATER SYSTEMS | 17 HOT AND COLD WATER DISPENSING APPLIANCE OPTIONS |
| 13 REPLACEMENT CARTRIDGES | 18 SUSTAINABILITY THAT SAVES |
| | 19 PEACE OF MIND. FOR LIFE. |



PROTECTION FOR THE WHOLE HOUSE



WHY CHOOSE PENTAIR EVERPURE?



1 Spa/Bathroom Filters
Page 10

2 Kitchen Filters
Pages 5-11

3 Whole House Filters
Page 16

THE PENTAIR EVERPURE ADVANTAGE: BRINGING COMMERCIAL TECHNOLOGY TO YOUR HOME. RELIABLE ACCESS TO CLEAN, QUALITY WATER IS ESSENTIAL FOR LIFE.

Wellness begins with water.

Utilizing the same technology used around the world in restaurants and coffee houses, Pentair Everpure brings superior filtration into your home. Everpure commercial grade water filtration systems reduce contaminants that affect water taste while preserving the valuable minerals and vitamins naturally found in drinking water. Pentair Everpure can provide peace of mind with clean, great-tasting water in your home.

Water Aesthetics

- Cloudiness
- Hardness
- Taste – musty, earthy, fishy, metallic, rust and chlorine
- Smell – sulphur and chlorine

Health Issues

- Volatile organic compounds (VOCs)
- Heavy metals and lead
- Chemicals
- Mold



Our drinking water systems are tested and certified to the highest standards.

STAGE



The Pentair Everpure exclusive precoat technology employs Micro-Pure⁸ media and a unique membrane technology to provide:

- Particle reduction as small as 0.5 micron in size by mechanical means
- Reduction of dirt, rust, oxidized iron, manganese, and sulfur
- Highest level taste and odor reduction
- Chlorine taste reduction

STAGE



Protects your appliances from the damaging buildup of limescale and mineral scale. The **Pentair Everpure H-Series** and **EF Series** protect and prolong the life of:

- Coffee and tea makers
- Water chillers
- Refrigerators
- Instant-hot units
- Ice makers
- Cappuccino machines
- Even sauna and steam units in the home

STAGE



Pentair Everpure units such as the **H-300**, **H-1200**, and **EF-6000** have a third stage, which gives additional protection including:

- Enhanced with KDF media to inhibit scale buildup that can damage equipment
- Reduction of volatile organic chemicals (VOCs) including trihalomethanes (THMs)
- Reduction of chloramines (H-1200 only)
- Reduction of MTBE (H-1200 only)

Everpure drinking water systems are tested and certified to the highest standards. See product specification sheets for agency certifications.



LOOK FOR




PRODUCTS THAT
REDUCE LEAD



FILTER SELECTION FOR CONTAMINANTS

CLEAN, FRESH WATER FROM EVERY TAP.

Choose the Pentair Everpure water filtration system that best fits your needs.

CONTAMINANT REDUCTION	EF-1500 & EF-3000	EF-6000	H-54/ H-104	H-300/ H-300-HSD	H-300-NXT	H-1200	PBS-400	ROM-IV
 Lead	•	•	•	•	•	•	•	•
Off-tastes and odors and chlorine	•	•	•	•	•	•	•	•
NSF/ANSI Standard 53 or 58 certified to reduce cysts such as <i>Cryptosporidium</i> and <i>Giardia</i> by mechanical means	•	•	•	•	•	•	•	•
Reduces particles as small as 0.5 micron in size by mechanical means	•	•	•	•	•	•	•	•
Oxidized iron, oxidized manganese and sulfides	•	•	•	•	•	•	•	
Volatile Organic Chemicals (VOCs), including Trihalomethanes (THMs)				•	•	•		
Bacteriostatic Control		•		•	•	•		
Pharmaceuticals*					•			
Chloramines and Methyl Tertiary Butyl Ether (MTBE)						•		
Copper, Cadmium, Selenium, Chromium III, and Chromium VI								•
Arsenic V								•
Fluoride								•
Radium 226/228								•
Dissolved minerals and salts								•
Dedicated faucet required?	N	N	Y	Y	Y	Y	N	Y

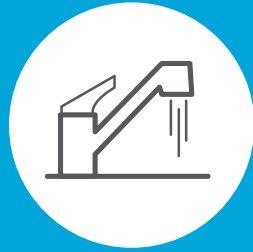
EPA Est. No. 002623-IL-002 *See Performance Data Sheet for the complete list of emerging contaminants.



DRINKING WATER SYSTEMS



DRINKING WATER SYSTEMS



Kitchen



Ice Maker

OUR COMPREHENSIVE RANGE OF WATER SOLUTIONS PROVIDE CLEAN, FRESH WATER THROUGHOUT YOUR HOME.

KITCHEN AND ICE MAKER FILTRATION SYSTEMS

The Pentair Everpure exclusive Micro-Pure filtration technology reduces potentially harmful contaminants in your family's drinking water. With an Everpure System in your home, everything you make will taste better: coffee, tea, flavored water mixes, juices, soups, and even ice cubes.



H-54 (EV925267)

- Reduces lead and chlorine taste & odor
- NSF/ANSI Standard 53 certified to reduce cysts such as *Cryptosporidium* and *Giardia* by mechanical means
- Similar features as model H-104
- Filters 750 gallons (2,835 liters); 0.5 gpm flow (1.9 lpm)
- Installation space required: 5W x 15H x 5D in (13 x 38 x 13 cm)

Bottled water equivalent **5,680**

Separate faucet installation



H-300 (EV927076)

- Reduces particles as small as 0.5 micron in size by mechanical means
- Reduces lead, volatile organic chemicals (VOCs), chlorine taste & odor and more
- NSF/ANSI Standard 53 certified to reduce cysts such as *Cryptosporidium* and *Giardia* by mechanical means
- Enhanced with KDF media to inhibit scale buildup that can damage equipment
- Filters 300 gallons (1,136 liters); 0.5 gpm flow (1.9 lpm)
- Installation space required: 5W x 22H x 5D in (13 x 56 x 13cm)

Bottled water equivalent **2,272**

Separate faucet installation



H-300-NXT (EV927151)

- Reduces particles as small as 0.5 micron in size by mechanical means
- Reduces lead, volatile organic chemicals (VOCs), chlorine taste & odor and more
- Only Pentair Everpure system NSF/ANSI standard 401 certified to reduce pharmaceuticals, BPA, and other emerging contaminants
- NSF/ANSI Standard 53 certified to reduce cysts such as *Cryptosporidium* and *Giardia* by mechanical means
- Enhanced with KDF media to inhibit scale buildup that can damage equipment
- Filters 300 gallons (1,136 liters); 0.5 gpm flow (1.9 lpm)
- Installation space required: 5W x 22H x 5D in (13 x 56 x 13cm)

Bottled water equivalent **2,272**

Separate faucet installation



H-104 (EV926271)

- Reduces particles as small as 0.5 micron in size by mechanical means
- Micro-Pure filtration media provides superior chlorine taste & odor and other contaminant reduction
- Reduces lead to below EPA standards
- NSF/ANSI Standard 53 certified to reduce cysts such as *Cryptosporidium* and *Giardia* by mechanical means
- Reduces limescale buildup in appliances
- Filters 1,000 gallons (3,780 liters); 0.5 gpm flow (1.9 lpm)
- Installation space required: 5W x 20H x 5D in (13 x 50.8 x 13 cm)

Bottled water equivalent **7,573**

Separate faucet installation



H-300-HSD (EV927077)

- Provides better dirt-holding capacity for high sediment applications
- Reduces particles as small as 0.5 micron in size by mechanical means
- Reduces lead, volatile organic chemicals (VOCs), chlorine taste & odor and more
- NSF/ANSI Standard 53 certified to reduce cysts such as *Cryptosporidium* and *Giardia* by mechanical means
- Enhanced with KDF media to inhibit scale buildup that can damage equipment
- Filters 300 gallons (1,136 liters); 0.5 gpm flow (1.9 lpm)
- Installation space required: 5W x 22H x 5D in (13 x 56 x 13cm)

Bottled water equivalent **2,272**

Separate faucet installation

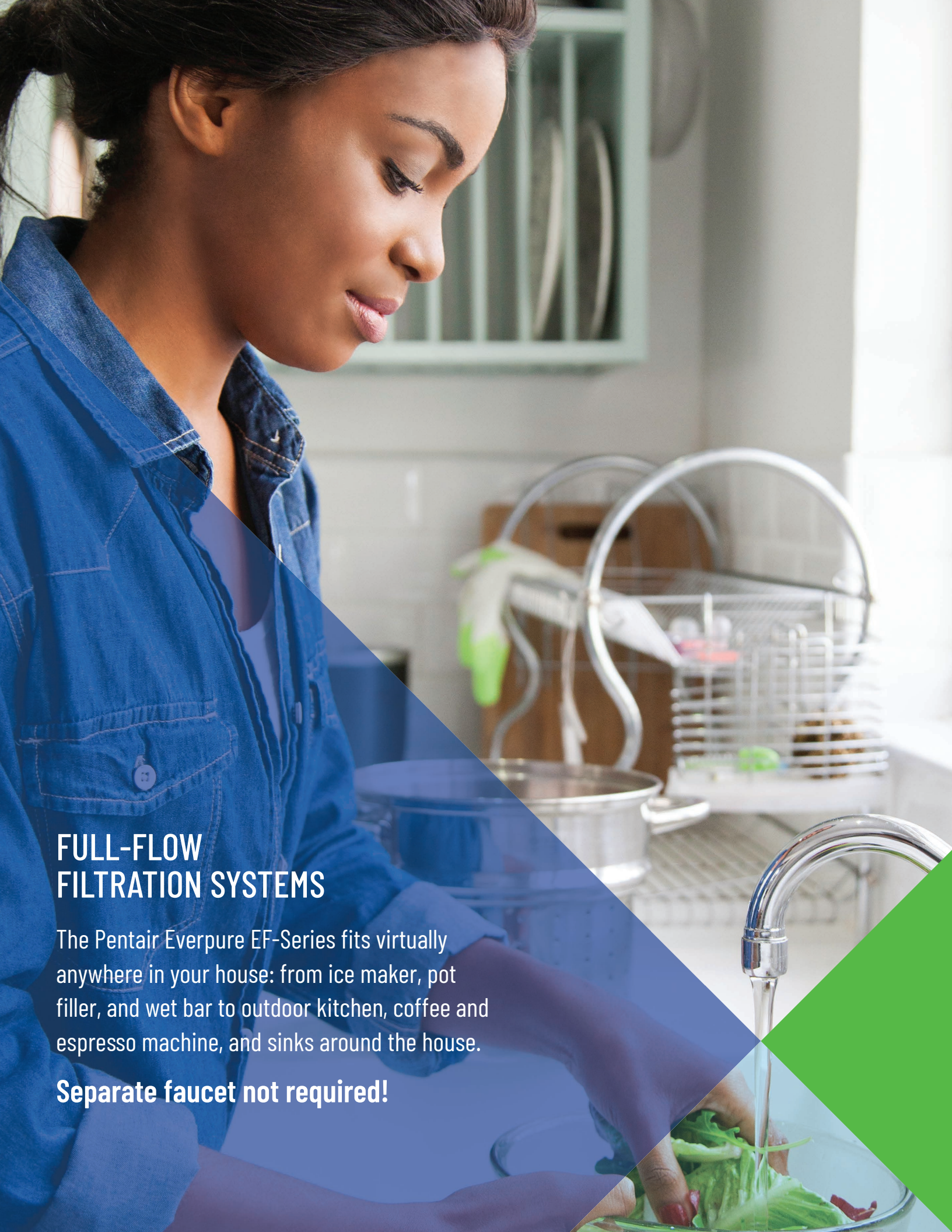


H-1200 (EV928200)

- Reduces particles as small as 0.5 micron in size by mechanical means
- Reduces lead, volatile organic chemicals (VOCs), MTBE, chlorine taste & odor and more
- NSF/ANSI Standard 53 certified to reduce cysts such as *Cryptosporidium* and *Giardia* by mechanical means
- Enhanced with KDF media to inhibit scale buildup that can damage equipment
- Filters 1,000 gallons (3,780 liters); 0.5 gpm flow (1.9 lpm)
- Installation space required: 13W x 22H x 5D in (33 x 56 x 13 cm)

Bottled water equivalent **7,573**

Separate faucet installation



FULL-FLOW FILTRATION SYSTEMS

The Pentair Everpure EF-Series fits virtually anywhere in your house: from ice maker, pot filler, and wet bar to outdoor kitchen, coffee and espresso machine, and sinks around the house.

Separate faucet not required!



DRINKING WATER SYSTEMS



EF-1500 (EV985800)

- Smaller canister size is ideal for use in the bathroom or wherever space is limited
- Reduces particles as small as 0.5 micron in size by mechanical means
- Reduces lead, chlorine taste & odor, dirt & cloudiness, and more
- NSF/ANSI Standard 53 certified to reduce cysts such as *Cryptosporidium* and *Giardia* by mechanical means
- Reduces limescale buildup in water appliances
- Filters 1,500 gallons (5,678 liters); 2.2 gpm flow (8.3 lpm)
- Installation space required: 5W x 15H x 5D in (13 x 38 x 13 cm)

Separate faucet not required!



EF-6000 (EV985550)

- Perfect for the family kitchen or any high capacity area
- Reduces particles as small as 0.5 micron in size by mechanical means
- Reduces lead, chlorine taste & odor, dirt & cloudiness, and more
- NSF/ANSI Standard 53 certified to reduce cysts such as *Cryptosporidium* and *Giardia* by mechanical means
- Contains bacteriostatic protection layer
- Reduces limescale buildup in water appliances
- Filters 6,000 gallons (22,712 liters); 2.2 gpm flow (8.3 lpm)
- Installation space required: 5W x 22H x 5D in (13 x 56 x 13cm)

Separate faucet not required!



EF-3000 (EV985700)

- Works well throughout the entire home
- Reduces particles as small as 0.5 micron in size by mechanical means
- Reduces lead, chlorine taste & odor, dirt & cloudiness, and more
- NSF/ANSI Standard 53 certified to reduce cysts such as *Cryptosporidium* and *Giardia* by mechanical means
- Reduces limescale buildup in water appliances
- Filters 3,000 gallons (11,356 liters); 2.2 gpm flow (8.3 lpm)
- Installation space required: 5W x 20H x 5D in (13 x 50.8 x 13 cm)

Separate faucet not required!





DRINKING WATER SYSTEMS



DRINKING WATER SYSTEMS



PREP SINK AND WET BAR FILTRATION SYSTEM

Ensure the quality of water used in preparing fresh vegetables and fruits, and in mixing better-tasting beverages and ice cubes. This compact filtration system neatly tucks away in virtually any cabinet and simply connects to your existing tap.



PBS-400 (EV927085)

- Reduces particles as small as 0.5 micron in size by mechanical means
- Provides superior chlorine taste & odor and other substance reduction
- Reduces lead to below EPA standards
- NSF/ANSI Standard 53 certified to reduce cysts such as *Cryptosporidium* and *Giardia* by mechanical means
- Reduces limescale buildup in water appliances
- Plumbs directly to your existing cold water tap
- Filters 3,000 gallons (11,356 liters); 2.2 gpm flow (8.3 lpm)
- Installation space required: 5W x 20H x 5D in (13 x 50.8 x 13 cm)

Separate faucet not required!



SPA-400 (EV927090)

- Easily connects to existing faucet lines and water fountains
- Reduces particles as small as 0.5 micron in size by mechanical means
- Reduces lead, chlorine taste & odor, dirt & cloudiness, and more
- NSF/ANSI Standard 53 certified to reduce cysts such as *Cryptosporidium* and *Giardia* by mechanical means
- Filters 3,000 gallons (11,356 liters); 2.2 gpm flow (8.3 lpm)
- Installation space required: 5W x 20H x 5D in (13 x 51 x 13 cm)

Separate faucet not required!



BATHROOM FILTRATION SYSTEM

Pentair Everpure SPA-400 reduces unwanted lead, particulates, and chemical impurities at the bathroom sink for brushing teeth and taking medication. This filter retains beneficial minerals such as fluoride, making it the perfect water source for maintaining dental health.



DRINKING WATER SYSTEMS



DRINKING WATER SYSTEMS



ROM-IV (EV929650)

- Reduces particles as small as 0.5 micron in size by mechanical means
- Provides superior chlorine taste & odor and other substance reduction
- NSF/ANSI Standard 58 certified to reduce cysts such as *Cryptosporidium* and *Giardia* by mechanical means
- High volume; producing up to 14 gallons per day
- Compact design
- High recovery encapsulated membrane
- Filters 5,000 gallons (18,925 liters)
- Installation space required: 9.50W x 18H x 5.0D (24.2 x 46 x 13 cm)

Replacement Cartridges

ROM-PFK Twin Cartridge Set	EV929670
ROM-G75 Reverse Osmosis Element	EV929775



REVERSE OSMOSIS SYSTEM

Offering a level of performance above and beyond conventional filtration systems, the Pentair Everpure ROM IV three-stage system ensures superior water quality for your family. Improved efficiency means less water wasted than traditional RO systems - a better option for the environment.



SCALE REDUCTION FILTRATION SYSTEMS

Enjoy the true taste of coffee when filtered through a Pentair Everpure commercial grade cartridge. Each cartridge boasts the same filtration technology used in our commercial restaurant systems. These cartridges protect the life of your water-using appliances.



SCS-350 Filtration/Softening System (EV927020)

- Delivers premium quality water for superior tasting coffee
- pH buffering prevents water from becoming too acidic
- Protects brewing systems from limescale buildup and damage
- Blends filtered water and softened water to 18 grains to help maintain low total dissolved solids levels
- High-capacity coconut carbon media provides enhanced chlorine taste & odor reduction
- Filters 150 gallons (568 liters); 0.5 gpm flow (1.9 lpm)
- Installation space required: 5W x 22H x 5D in (13 x 56 x 13 cm)



Standard Filtration/Decalcification Service Kit (EV925240)

Includes: QL3 head, JT cartridge, bypass plug, Scaleklean®, special fittings, tubing and instructions

SCS-350 Filtration/Decalcification Service Kit (EV925230)

Contains all of the components needed to install filtration for new built-in coffee appliances including: QL3 head, JT cartridge, SCS-350 cartridge, bypass plug, Scaleklean, angle stop valve adaptor, special fittings, tubing and instructions.

SCS-350 Cartridge Only (EV927020)



REPLACEMENT CARTRIDGES

FILTER LIFE CYCLE

Replace your filter about every six to twelve months or when you notice a decrease in flow rate.

EASE OF REPLACEMENT

Patented quick-change technology for easy cartridge replacement.

Quickly replace the cartridge with an easy 1/4 turn.



Through partnership with TerraCycle®, Pentair Everpure quick-change aluminum filtration cartridges are recycled to become new products.

Learn more at residential.everpure.com/recycle.

DESCRIPTION	PART NO.
H-54 Replacement Cartridge (1-PK) H-54 Replacement Cartridge (6-PK)	EV925268 EV973006
H-104 Replacement Cartridge (1-PK) H-104 Replacement Cartridge (6-PK)	EV961211 EV961216
H-300 Replacement Cartridge (1-PK) H-300 Replacement Cartridge (6-PK)	EV927072 EV927071
H-300-NXT Replacement Cartridge (1-PK) H-300-NXT Replacement Cartridge (6-PK)	EV927441 EV927446
H-300-HSD Replacement Cartridge (1-PK) H-300-HSD Replacement Cartridge (6-PK)	EV927075 EV927074
H-1200 Replacement Cartridge (1-PK) H-1200 Replacement Cartridge (3-PK)	EV928201 EV928203
SCS-350 Replacement Cartridge (1-PK)	EV927020
SPA-400 Replacement Cartridge (1-PK) SPA-400 Replacement Cartridge (6-PK)	EV927091 EV927097
EF-1500 Full Flow Replacement Cartridge (1-PK) EF-3000 Full Flow Replacement Cartridge (1-PK) EF-3000 Full Flow Replacement Cartridge (6-PK) EF-6000 Full Flow Replacement Cartridge (1-PK) EF-6000 Full Flow Replacement Cartridge (6-PK)	EV985850 EV985750 EV985756 EV985550 EV985556
PBS-400 Replacement Cartridge (1-PK) PBS-400 Replacement Cartridge (6-PK)	EV927086 EV927087
ROM-PFK Twin Cart Set, 1/C ROM-G75, RO Element, 1/C	EV929670 EV929775



DRINKING WATER FAUCETS



CLASSIC SERIES COLD WATER ONLY

Chrome	EV997062
Brushed Nickel	EV997063
Tuscan Bronze	EV997064



DESIGNER SERIES COLD WATER ONLY

Chrome	EV997056
Brushed Nickel	EV997059
Oil Rubbed Bronze	EV997060

[Air Gap Adapter for Reverse Osmosis Systems](#) EV312339
(Required for Reverse Osmosis Systems without built-in air gap)

DEDICATED FAUCETS FOR PENTAIR EVERPURE FILTRATION SYSTEMS

These faucets are available in two striking, versatile styles and various finishes. Aerator tips provide even, clear streams of filtered water with 0.5 gpm flow (1.9 lpm).



DESIGNER SERIES FOR HOT & COLD WATER

Polished Stainless Steel	EV900085
Brushed Stainless Steel	EV900086



INLINE WATER FILTERS

For compact spaces, such as behind the refrigerator, Pentair Everpure offers streamlined inline filter options.



MODEL	PART NO.	DESCRIPTION	CAPACITY / LIFE
IN-6 PG- S	EV910067	6" 100% phosphate for scale prevention only	6 months
IN-10	EV910008	10" granular activated carbon with scale control	2,400 gallons
IN-10 CC	EV910071	10" calcite/carbon for T&O with mineral feed	2,000 gallons
IN-10 NS5	EV910072	10" five-micron sediment for dirt and particles	6-12 months
IN-10 CK	EV910068	10" KDF-55D/carbon for T&O reduction with scale and slime prevention	5,000 gallons
IN-12	EV910007	10" high capacity granular activated carbon with scale control	4,800 gallons
IN-12	EV910086	10" high capacity granular activated carbon with scale control and JG Fittings	4,800 gallons
IN-15	EV910076	15" five-micron graded density carbon block for T&O reduction	5,000 gallons



WHOLE HOUSE FILTERS

DROP-IN FILTER SYSTEMS AND CARTRIDGES

Both durable and affordable, Pentair Everpure drop-in filter systems and cartridges provide whole home protection with minimal maintenance or expense.



E-10 Sediment Prefilter (EV979580)

- Inlet/Outlet 3/4" NPT
- 10" housing with 10 micron sediment filter



E-20 Sediment Prefilter (EV979590)

- Inlet/Outlet 3/4" NPT
- 20" housing with EC210 sediment prefilter cartridge



Basic Filter Housings

- Inlet/Outlet 1/2" NPT
- A-10 10" clear housing (EV910001)
- A-11 10" opaque housing (EV910002)



CGT-10 Drop-In Cartridge (EV910811)

- Chlorine, taste & odor reduction

CG53-10 Drop-In Cartridge (EV910853)

- Chlorine, taste & odor
- NSF/ANSI Standard 53 certified to reduce cysts such as *Cryptosporidium* and *Giardia* by mechanical means

SS-10 Scalestick[®] (EV979902)

- Hydroblend compound
- Translucent housing

REPLACEMENT CARTRIDGES

- EC110 For E-10 (12-PK) EV953412
- EC210 For E-20 (6-PK) EV953426



Whole House Twin 20" Big Bowl System (EV910024)

- High capacity Parallel 202 Housing and (2) DGD 2501 Sediment Reduction Cartridges

REPLACEMENT CARTRIDGES FOR WHOLE HOUSE BIG BOWL SYSTEMS

- 20" Dual Gradient Poly Sediment Cartridge (6-PK) 155360-130
- 20" Pleated Cellulose Polyester Cartridge (6-PK) 255494-43
- 20" Granular Activated Carbon Cartridge (4-PK) 155249-43
- 20" Carbon Block (EP-20BB) Cartridge (4-PK) 155583-43
- 20" Radial Flow Iron Reduction Cartridge (4-PK) 155263-03



S0-204 Softening Cartridge (EV910545) (4-PK)

- Reduces scale-forming minerals
- May be used on water having up to 30 grains per gallon (500mg/L) hardness



T-20 Whole House Filter (EV937000)

- Reduces common, unpleasant tastes and odors, and excess chlorine
- Fine filters cloudiness, and undissolved lead
- Dimensions: 29.7H x 9.1D in (75.4 x 23.1 cm)
- 5-8 gpm flow (19-30 lpm)

- 2053 Micro-Pure Charge (6-PK) EV969000
- 2055 Element and Micro-Pure Charge (1-PK) EV971000





WATER APPLIANCES

CHILLER AND HOT WATER DISPENSER

Pentair Everpure Polaria[®] and Solaria[®] systems offer quality, filtered water, hot or chilled. Enjoy the convenience of custom water dispensed from one of our elegant designer faucets.



Polaria Water Chiller (EV931830)

- Commercial grade chiller delivers up to 1.3 gallons (4.9 liters) of chilled water per hour – 50°F (10°C)
- Whisper-quiet compressor
- Ozone friendly
- Dimensions: 14H x 7W x 17D in (35.6 x 17.8 x 43.2 cm)



Solaria Instant Hot Water Dispenser (EV931840)

- Commercial grade instant hot water dispenser delivers piping hot water at 190°F (87.7°C)
- Insulated 5/8 gallon stainless steel tank delivers up to 100 cups per hour
- Self-resetting thermal fuse
- Dimensions: 11.2H x 6.8W x 8.1D in (28.4 x 17.3 x 20.6 cm)



SUSTAINABILITY THAT SAVES

CLEAN WATER WITHOUT THE WATER BOTTLES.

Approximately **70%** of water bottles in the United States are not recycled and as many as **90%** worldwide.¹ Not surprisingly, over **8.8 million tons of plastic** end up in the oceans every year.²

With **one** Pentair Everpure cartridge, you save **7,573 water bottles**** and the crude oil and energy used to produce and transport them.

RECYCLABLE CARTRIDGES

By partnering with TerraCycle[®], Everpure quick-change aluminum filtration cartridges by Pentair can be 100% recycled* to become new sustainable products. The process is simple and free!

Contact us for locations and information.

www.residential.everpure.com/recycle



¹ 2016 National Post-Consumer Plastics Bottle Recycling Report. "How Plastics Are Made, The Association of Plastic Recyclers and The American Chemistry Council, 2017", <https://plastics.americanchemistry.com/2016-US-National-Postconsumer-Plastic-Bottle-Recycling-Report.pdf>.

Nace, Trevor. "We're Now at a Million Plastic Bottles Per Minute - 91% Of Which Are Not Recycled." Forbes, Forbes Magazine, 28 July 2017, <https://www.forbes.com/sites/trevornace/2017/07/26/million-plastic-bottles-minute-91-not-recycled/#644aee62292c>.

² Parker, Laura. "A Whopping 91% of Plastic Isn't Recycled." National Geographic, National Geographic Society, 16 May 2018, [news.nationalgeographic.com/2017/07/plastic-produced-recycling-waste-ocean-trash-debris-environment/](https://www.nationalgeographic.com/2017/07/plastic-produced-recycling-waste-ocean-trash-debris-environment/).

** Calculation based on the H-104 filter cartridge performance.

* Recyclable only at certain facilities.

PEACE OF MIND. FOR LIFE.

WATER TOUCHES NEARLY EVERYTHING WE DO.

At Pentair, we believe the health of our world depends on reliable access to clean water.

With a history of more than 85 years in water filtration, Pentair Everpure is the number one selling brand of commercial grade products worldwide. Offering an eco-conscious alternative to bottled water, Pentair is also a trusted provider of drinking water systems and appliances for savvy consumers desiring the cleanest, best tasting water possible.

Our responsibility is to deliver smart, sustainable water solutions — for life. From approximately 130 locations in 34 countries, Pentair's 10,000 employees are united in our unwavering belief in the critical importance of clean water.

To learn more, visit [pentair.com](https://www.pentair.com).

The future of water depends on us.





13845 BISHOPS DR | SUITE 200 | BROOKFIELD, WI 53005 | UNITED STATES | P: 262.238.4400 | WWW.PENTAIR.COM
CUSTOMER CARE: 800.279.9404 | TECH-SUPPORT@PENTAIR.COM

© 2019 Pentair Residential Filtration, LLC. All rights reserved.

[§]For a detailed list of where Pentair trademarks are registered, please visit <https://www.pentair.com/en/registrations.html>. Pentair trademarks and logos are owned by Pentair plc or its affiliates. Third party registered and unregistered trademarks and logos are the property of their respective owners.

TerraCycle® and the TerraCycle Logo® are all property of TerraCycle, Inc. used under license. ©2019
310905 Rev E MR19