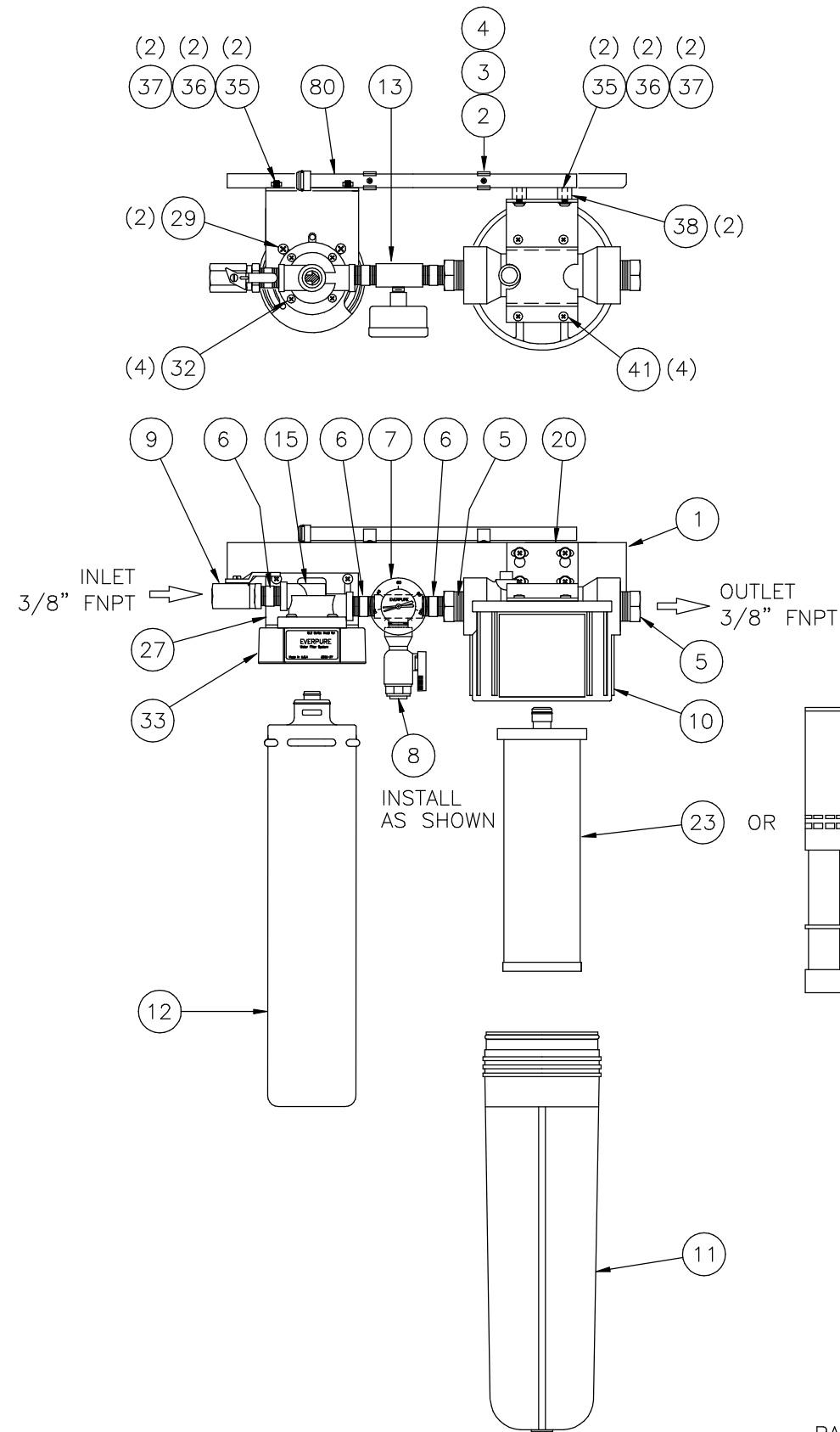


BALLOON NUMBER	PART NUMBER	QTY.	PRODUCT DESCRIPTION
1	EV309215	1	CHANNEL PAINTED
2	EV479000	2	NUT, #4-40, HEX, 316SS
3	EV304222	2	SCREW, MACH, #4-40 X 1/2, 18-8SS FLT HD PHIL
4	EV310018	2	CLIP
5	EV310591	2	BUSHING, 3/4 X 3/8, TXT PVC SCH80 SPEARS #839-099
6	EV307497	3	HEX NIPPLE PLATED
7	EV306818	1	BACK MNT BRASS GAUGE 0-125 PSI
8	EV310201	1	VALVE, BALL, 3/8 NPTI X 3/8 PI
9	EV307420	1	BALL VALVE PLATED (3/8")
10	EV308044	1	HEAD DRILLED
11	EV307019	1	10" P/F REPLACEMENT BOWL AND O-RING
12	EV961716	1	4 CB5 CARTRIDGE (6 PK)
13	EV306693	1	MALE BRANCH TEE PLATED
15	EV306193	1	QC HEAD BODY & RING ASSY
20	EV306961	1	WALL MOUNTING PLATE, PLATED
23	EV949610	1	AR-10 CARTRIDGE (1 PK) OR
	EV979902	1	SCALESTICK (12 PK.)
26	EV979620	.083	SCALEKLEEN 7 OZ E/F 24PK
27	EV304644	1	MOUNTING PLATE, PLATED
29	EV306203	3	SCREW, MACH, #10-32 X 5/16, PLTD PN HD PHIL
32	EV303449	8	SCREW, MACH,#10-32 X 5/8, 18-8SS RD HD PHIL
33	EV307850	1	SUPPORT RING
35	EV543000	6	WSHR PL #10 X .037 SST
36	EV302930	6	NUT, #10-32, HEX, PLTD
37	EV306531	2	SCREW, MACH,#10-32 X 1-1/8, 18-8SS RD HD PHIL
38	EV306919	2	SPACER
41	EV307752	4	SCREW, MACH, #10-14 X 1/2, PLTD PN HD PHIL PLASTITE
80	EV308040	1	DIP TUBE REPLACEMENT ASSEMBLY



DO NOT SCALE DRAWING TOLERANCES: ±1/8" UNLESS OTHERWISE NOTED				
Let.	Change	By	App	Date
A	REVISED PART NUMBER	KMR	TO	6/13/03
B	ADDED SCALESTICK	KMR	TO	6/16/03

EVERPURE®
ENGINEERED SYSTEMS
 NORTHBROOK, ILLINOIS

PRINT AND BILL OF MATERIAL ARE NOT TO BE USED WITHOUT THE WRITTEN CONSENT OF CULLIGAN INTERNATIONAL CO.

NAME CT KLEENSTEAM		
DETAILED BY: KMR 5/30/03	APP. BY:	SHEET 1 OF 1
REF. NO.	PART NO. CT_KLEENSTEAM	