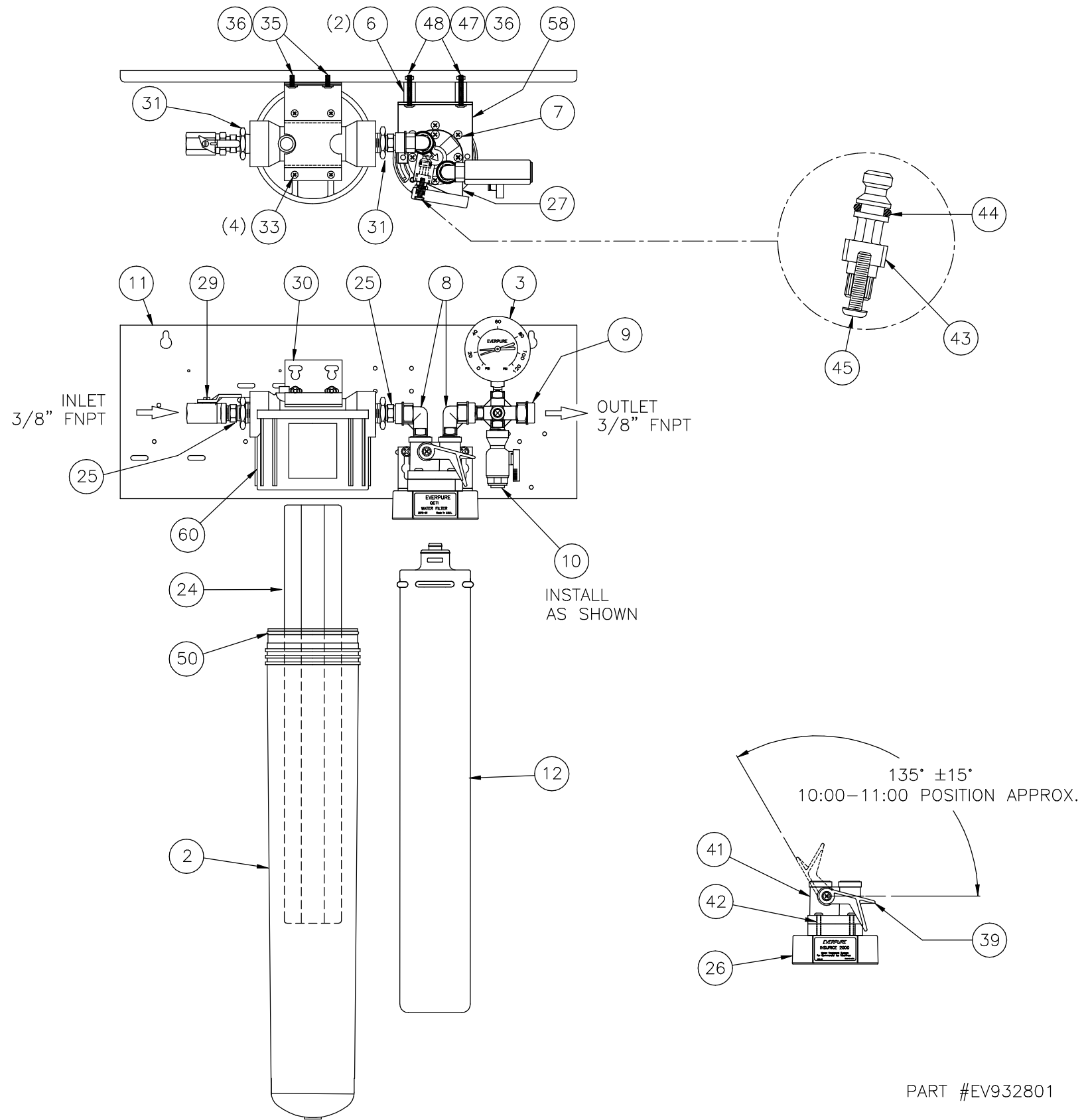


BALLOON NUMBER	PART NUMBER	QTY.	PRODUCT DESCRIPTION
2	EV307018	1	20" P/F REPLACEMENT BOWL AND O-RING
3	EV310850	1	GAUGE, PRS, 2", 1/8" LM, 125 PSI SS
6	EV309348	2	SPACER NYLON
7	EV306203	3	SCREW, MACH, #10-32 X 5/16, PLTD PN HD PHIL
8	EV310852	2	ELBOW, 3/8"
9	EV310851	1	OUTLET TEE MOLDED TOP MOUNT GAUGE
10	EV310201	1	VALVE, BALL, 3/8 NPTI X 3/8 PI
11	EV309214	1	20" STEEL PLATE PAINTED
12	EV961206	3	MC CARTRIDGE 1 PK.
	EV961205	1	MC CARTRIDGE 6 PK.
24	EV953420	.05	EC210 CARTRIDGE 20 PK.
25	EV310923	2	NIPPLE, 3/8" X 1-1/4", NYLON
26	EV307850	1	SUPPORT RING
27	EV305973	1	SPACER - W/O LUGS
29	EV307420	1	VALVE, BALL, 3/8 NPTI, BRASS
30	EV306961	1	WALL MOUNTING PLATE, PLATED
31	EV310591	2	BUSHING, 3/4X3/8, TXT, PVC SCH80
33	EV307752	4	SCREW, TAP, #10-14X1/2, PLTD PN HD PHIL PLASTITE
35	EV306416	2	SCREW, TAP, #10-32X1/2, 410SS PN HD PHIL TYP F
36	EV543000	4	WSHR PL #10 X .037 SST
39	EV303452	1	BLK VALVE HANDLE/PL HEAD
41	EV306107	1	PLSTC HD. BODY QC W/RINGS
42	EV306531	4	SCREW, MACH, #10-32 X 1-1/8, 18-8SS RD HD PHIL
43	EV300900	1	VALVE STEM CELCON MOLD
44	EV301000	1	O-RING .5310D X .103 CS
45	EV301200	1	SCREW, TAP, #8-16X7/8, PLTD PN HD PHIL PLASTITE
47	EV302930	2	NUT, #10-32, HEX, PLTD
48	EV309349	2	SCREW, MACH, #10-32X1-1/2, 304SS PN HD PHIL
50	EV306027	1	O-RING
58	EV304644	1	MOUNTING PLATE, PLATED
60	EV306613	1	STANDARD HEAD



DO NOT SCALE DRAWING TOLERANCES: ±1/8" UNLESS OTHERWISE NOTED				
Let.	Change	By	App	Date

EVERPURE[®]
ENGINEERED SYSTEMS
 NORTHBROOK, ILLINOIS
 PRINT AND BILL OF MATERIAL ARE NOT
 TO BE USED WITHOUT THE WRITTEN
 CONSENT OF CULLIGAN INTERNATIONAL CO.

NAME COLD DRINK SYSTEM 1		
DETAILED BY: KMR 9/3/03	APP. BY:	SHEET 1 OF 1
REF. NO.	PART NO. COLD DRINK_SYS_1	