



EVERPURE®

THE PRIME ADVANTAGE IS PREMIUM QUALITY WATER

EVERPURE claris™ | prime SYSTEM

The new Everpure Claris Prime System has been specifically developed to remove a range of contaminants from water to minimize operating costs. Using unique water purification and softening technology, the system effectively combines hardness reduction, mineral stabilization and corrosion inhibition by maintaining a controlled low carbonic acid level in the water.

The result is a balanced alkalinity and mineral composition in water, with stable and close-to-neutral pH which helps prevent limescale formation and corrosion in steam applications, and delivers the ideal ingredient water for enhancing coffee flavors and aiding in the proper extraction of the coffee bean and grind for hot drink applications.

**DRIP COFFEE
AND ESPRESSO
COFFEE MACHINES**



- Best quality roasted coffee/optimal use of ingredients
- Limescale protection/avoid frequent descaling service
- Enhanced energy efficiency/lower cost of operation
- Small footprint/less space requirement

Applications

**DIRECT INJECTION
COMBI OVENS**

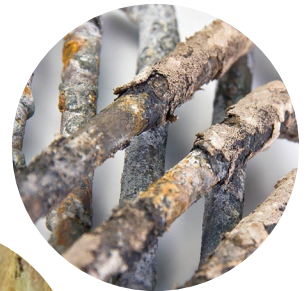


- Corrosion protection/extends equipment life
- Scale inhibition/reduces downtime and maintenance costs
- Reduced chlorides and sulfates/improves appearance and flavor of food
- Small footprint/ideal for smaller combi ovens

Benefits of Everpure Claris Prime

- Effectively prevents scale formation on drip coffee and espresso machines, as well as direct injection combi ovens
- Protects equipment from mineral-induced corrosion in areas with high total dissolved solids (TDS), chloride and sulphate content in the feed water
- Prevents corrosion of machine parts caused by aggressive water as well as depositing corrosion-induced metal complexes (ferrous iron, lead, copper, cadmium, mercury) on machine parts
- Prevents metal migration of particularly sensitive machine parts
- Prevents sudden pH drops from decarbonization filters and maintains optimal pH levels for the best-tasting, highest quality drip coffee and espresso
- Eliminates undesirable cloudiness, organic impurities and chlorine, off-taste and odor residues in the water (integrated activated carbon block filter)
- Ensures the lowest operation costs, less machine downtime and repairs
- Features a small footprint – ideal for use when space is at a premium
- Offers lower pressure drop and higher throughput

**REDUCES
SCALE
BUILDUP**



**INHIBITS
CORROSION**



**REDUCES
CHLORINE,
OFF-TASTES
AND ODORS**



Operator Savings Benefits

The financial impact of machine downtime, repairs and full replacement can be burdensome to operators. Unplanned costs and time-consuming repairs, especially during peak operating hours, negatively affects the business. The Claris Prime's new technology puts an end to all of these problems by providing lower operating costs and promoting long equipment life. The result is both happy operators and satisfied customers.

Everpure extends the Claris market edge

Claris Prime is the next level in the Everpure Claris family of cartridges. Where the Claris Ultra brought breakthrough technology through the combination of partial hydrogen softening and sequestering, Claris Prime goes a step beyond with three key benefits:

- Chloride and sulphate reduction
- Adjustable chloride and sulphate levels
- Adjustable total dissolved solid (TDS) levels

Everpure Claris Prime is ideal for locations where high levels of chlorides and sulphates are present in the water. Not only does Claris Prime offer superior chloride and sulphate reduction, you can tailor the amount of both – as well as TDS levels – in the water produced by the system to meet your desired water recipe. Whether you're applying Claris Prime to coffee or steam applications, this solution allows you to tailor the product water to your unique needs.

Technologies converge for the most advanced water treatment

The Everpure Claris Prime features a 6-stage filtration process that results in a compact, high capacity system. Multiple technologies come together to reduce total dissolved solids, chlorides and sulphates, providing clear, great-tasting and odor-free water.

Everpure Claris' proprietary DuoBlend® bypass valve technology offers consistent and precise adjustment of carbonate hardness by filtering the water for off-tastes and odors, and allowing a predetermined amount of water to pass through the cartridge's ion exchange resin. The amount that is passed is determined simply

by turning the dial on the filter head. By blending filtered water and softened water, operators can achieve the desired mineral content to achieve their optimal water recipes.

The Claris Prime ensures an accurate and consistent bypass ratio at different water flow and pressure rates to maintain the same carbonate in the blended water. The Claris Prime also has a high-efficiency, 5-micron integrated carbon block filter that reduces sediment (>0.005 mm) and chlorine residue from the bypass and softened water.

Innovative features for superior operation and performance

New Claris Gen2 Universal Filter Heads*

Built-in flush valve and backflow preventer

Automatic inlet and outlet shutoff valves mean no risk of opening head and having water run everywhere

System operates in either a vertical or horizontal orientation



"Valve-in-head" design allows the system to depressurize by itself during cartridge changeout

Adjustable DuoBlend bypass valve allows for precise adjustment of carbonate hardness

Quick to install, easy to handle, fast to service

- Flat cartridge connector allows filter replacement in limited space
- Prefiltration removes coarse particles
- Carbonate hardness is adjusted through an ion exchange process

*Head sold separately.

PRODUCT SPECIFICATIONS

EVERPURE CLARIS™ PRIME CARTRIDGE

| PART NO. | FLOW RATE GPM (LPM) | RATED CAPACITY* GALLONS (LITRES) | PRESSURE REQUIREMENTS PSI (BAR) NON-SHOCK | TEMPERATURE LIMITS °F (°C) | ELECTRICAL CONNECTION | SHIP WT LBS (KGS) |
|-----------|------------------------|--|--|----------------------------------|--------------------------|----------------------|
| EV4339-86 | 1.00 (3.79) | 557 [†] (2,110 [†]) 1,255 ^{††} (4,750 ^{††}) | 29-116 (2-8) | 39-86 (4-30) | None Required | 15.2 (6.9) |

| DIMENSIONS | HEIGHT INCHES (CM) | | CARTRIDGE DIAMETER INCHES (CM) | MINIMUM DISTANCE FROM GROUND INCHES (CM) |
|------------|-----------------------|-------------------|--------------------------------------|--|
| | CARTRIDGE + HEAD | CARTRIDGE ONLY | | |
| | 20.67 (50.50) | 18.56 (47.14) | 6.89 (17.50) | 1.58 (4.01) |



* Based on 10 grains of hardness and a bypass setting of 4".

[†] For direct injection combi ovens; capacity based on influent water TDS of ppm, hardness of 180 ppm and chlorides of 60 ppm with standard bypass settings.

^{††} For espresso; capacity based on influent water TDS of ppm, hardness of 180 ppm and chlorides of 60 ppm with standard bypass settings.

NEW EVERPURE CLARIS GEN2 FILTER HEADS

Introducing the next generation of Claris Filter Heads, which offer tamper-proof bypass settings and even easier cartridge replacement, while still fitting all Everpure Claris Cartridges. Features include:

- Available in various two-sided connection types: thread or 3/8" BSP, 3/8" NPT, and both 3/8" and 8mm JG
- Simple cartridge replacement – just a 45 degree turn
- Tamper-proof bypass settings – secure and easy to set with use of provided key
- Seven (7) bypass level settings – easily customized to your unique needs
- DuoBlend® feature provides very stable bypass accuracy over velocity and pressure
- Standard inlet/outlet shutoff valves
- Non-return (check) valve in head standard in 3/8" JG inlet connector
- Automatic shutoff
- Fits all Everpure Claris Cartridges – Standard, Ultra and Prime

| PART NO. | CONNECTION | AUTO SHUTOFF | MOUNTING BRACKET | SHIP WT LBS (KGS) | |
|-----------|------------|--------------|------------------|----------------------|-----|
| EV4339-90 | 3/8" BSP | Yes | Yes | 0.7 | 0.3 |
| EV4339-91 | 3/8" NPT | Yes | Yes | 0.7 | 0.3 |
| EV4339-92 | 3/8" QCF | Yes | Yes | 0.7 | 0.3 |



Note: See catalog for other available heads and accessories

Claris™ is a trademark of Aquis, GmbH.



WATER QUALITY SYSTEMS

EVERPURE-SHURFLO WORLD HEADQUARTERS, 1040 MUIRFIELD DRIVE, HANOVER PARK, IL 60133 USA • FOODSERVICE.PENTAIR.COM
800.942.1153 MAIN (US ONLY) • 630.307.3000 MAIN • 630.307.3030 FAX • CSEVERPURE@PENTAIR.COM EMAIL

All Pentair trademarks and logos are owned by Pentair, Inc. or its affiliates. All other registered and unregistered trademarks and logos are the property of their respective owners. Because we are continuously improving our products and services, Pentair reserves the right to change specifications without prior notice.

Pentair is an equal opportunity employer.

EV7016-81 JL16 © 2016 Pentair Filtration Solutions, LLC. All Rights Reserved.