

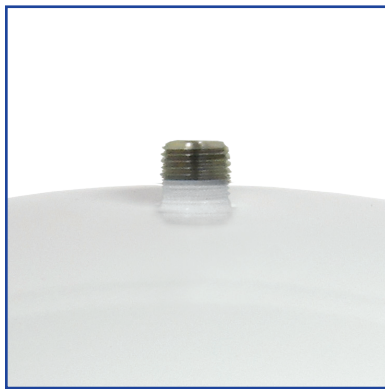


# Tank Installation

# tankRo<sup>®</sup> 2 • 3 • 4 • 6 Gallon Tank Installation

**NOTE!** Do not tamper with the air valve on the lower side of the Water Storage Tank. It has been preset at 7-10 PSI

1. Open the Water Storage Tank box and unscrew the Tank Stand from the threaded stem at the top of the Tank.
  2. Wrap the threaded stem 8-10 times with Teflon Tape.
  3. Screw the Tank Valve onto the threaded stem. Make sure it is tight, but do not over tighten.
  4. Connect your water supply to the inlet of the tank valve. Allow tank to fill for one minute.
  5. Completely drain the tank then connect your filtration system to the tank.
  6. Open your water supply and allow the tank to fill (2-4 hours) then drain tank completely.
- Your tank is now flushed and ready for normal use.



**A. Tank Thread**



**B. Tank Valve**



**C. Tank Stand**

**NOTE!** If after 3-5 hours your tank does not fill: Connect the tank directly to the cold water supply (bypassing the RO System) and allow the tank to fill for about 1 minute. Then reconnect to your system as normal and empty the tank through faucet. This will help activate the tank bladder.

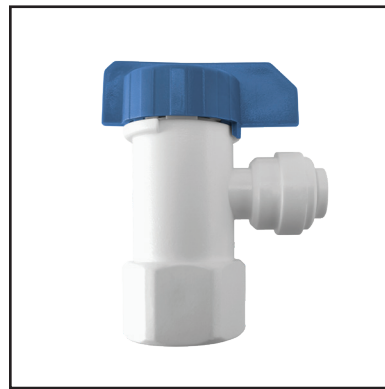
# tankRo<sup>®</sup> 2 Gallon Tank Installation

**NOTE!** Do not tamper with the air valve on the lower side of the Water Storage Tank. It has been preset at 7-10 PSI

1. Open the Water Storage Tank box.
2. Screw the Tank Valve onto the threaded stem. Make sure it is tight (no need for teflon tape), but do not over tighten.
3. Connect your water supply to the inlet of the tank valve. Allow tank to fill for one minute.
4. Completely drain the tank then connect your filtration system to the tank.
5. Open your water supply and allow the tank to fill (2-4 hours) then drain tank completely.  
Your tank is now flushed and ready for normal use.



**A. Tank Thread**



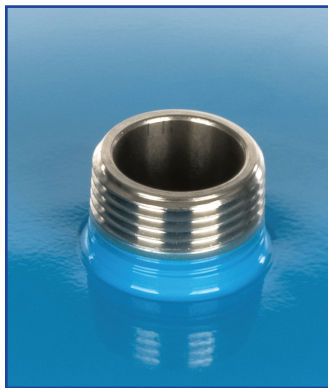
**B. Tank Valve**

**NOTE!** If after 3-5 hours your tank does not fill: Connect the tank directly to the cold water supply (bypassing the RO System) and allow the tank to fill for about 1 minute. Then reconnect to your system as normal and empty the tank through faucet. This will help activate the tank bladder.

# tankRo<sup>®</sup> 11 • 20 Gallon Tank Installation

**NOTE!** Do not tamper with the air valve on the lower side of the Water Storage Tank. It has been preset at 7-10 PSI

1. Open the Water Storage Tank box and unscrew the Tank Stand from the threaded stem at the top of the Tank.
2. Wrap the threaded stem 8-10 times with Teflon Tape.
3. Screw Elbow onto the Water Stem, then screw the Adapter into the Elbow. Finally screw the Tank Valve into the Adapter. Make sure the connections are tight, but do not over tighten.
4. Connect your water supply to the inlet of the tank valve. Allow tank to fill for one minute.
5. Completely drain the tank then connect your filtration system to the tank.
6. Open your water supply and allow the tank to fill (2-4 hours) then drain tank completely. Your tank is now flushed and ready for normal use.



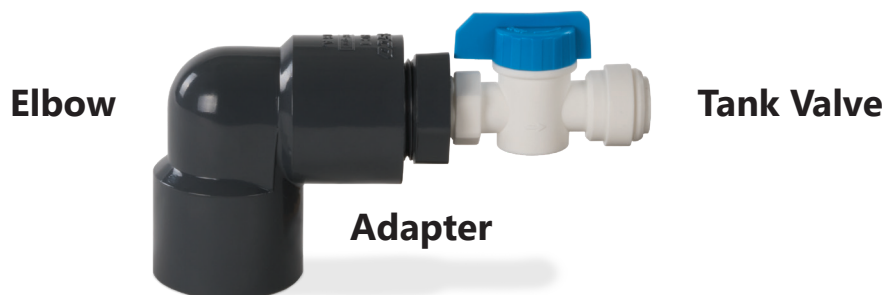
**A. Water Valve**



**B. Air Valve**



## Threaded Connections



**NOTE!** If after 3-5 hours your tank does not fill: Connect the tank directly to the cold water supply (bypassing the RO System) and allow the tank to fill for about 1 minute. Then reconnect to your system as normal and empty the tank through faucet. This will help activate the tank bladder.

# tankRo<sup>®</sup> 30 • 40 Gallon Tank Installation

**NOTE!** Do not tamper with the air valve on the lower side of the Water Storage Tank. It has been preset at 7-10 PSI

1. Open the Water Storage Tank box and unscrew the Tank Stand from the threaded stem at the top of the Tank.
2. Wrap the threaded stem 8-10 times with Teflon Tape.
3. Screw Elbow onto the Water Stem, make sure the elbow faces the open portion of the Tank Stand. Then screw the Adapter into the Elbow, it should go from the Elbow through the Tank Stand. Finally screw the Tank Valve into the Adapter. Make sure the connections are tight, but do not over tighten.
4. Connect your water supply to the inlet of the tank valve. Allow tank to fill for one minute.
5. Completely drain the tank then connect your filtration system to the tank.
6. Open your water supply and allow the tank to fill (2-4 hours) then drain tank completely. Your tank is now flushed and ready for normal use.



**A. Air Valve**



**B. Water Valve**



**Elbow**

**Adapter**

**Tank Valve**

**NOTE!** If after 3-5 hours your tank does not fill: Connect the tank directly to the cold water supply (bypassing the RO System) and allow the tank to fill for about 1 minute. Then reconnect to your system as normal and empty the tank through faucet. This will help activate the tank bladder.

**tankRo®**