

RO Faucets Instructions



The RO Faucet may be installed on any flat surface. Check the underside of the location for interference. You may use the existing hole on the sink or drill a new hole.

Make sure the washer is big enough to cover the hole. If you drill a new hole on the countertop or sink, make sure that drilling the hole will not damage any pipe or wiring underneath the countertop or sink.

Installation Steps

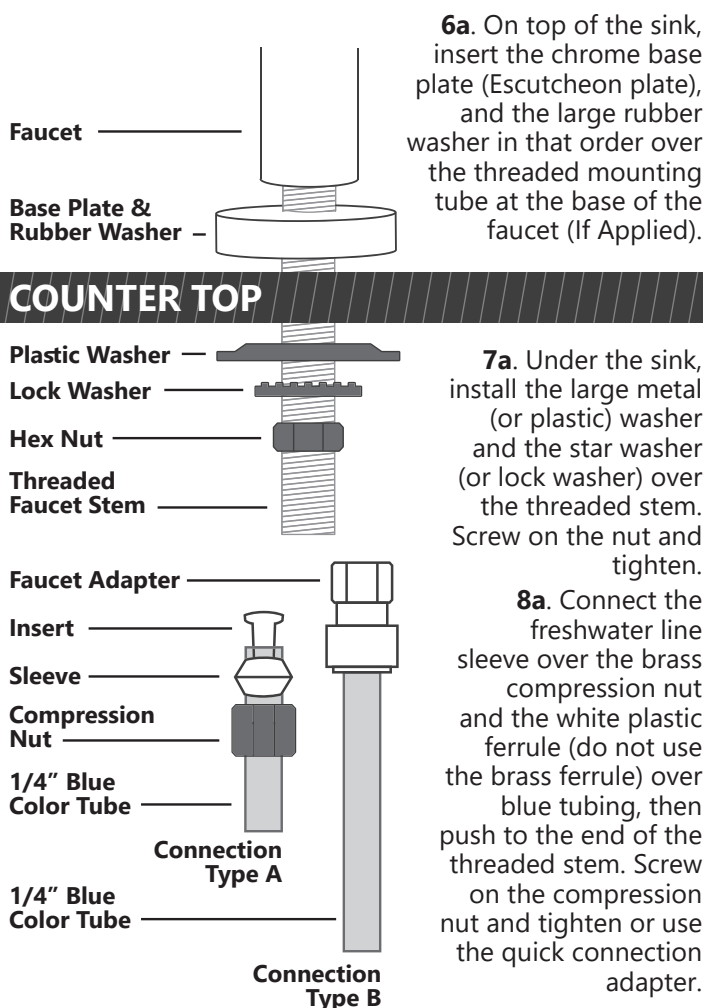
1. Determine the desired location for your RO Faucet on your sink surface.
2. Place masking tape or duct tape on the determined location for the hole to be drilled.
3. Use a variable speed drill set on slow speed and drill with a 1/8 inch (3mm) drill bit to make a center hole at the select location.

Note! Use water or lubricant to keep the drill bit cool while drilling.

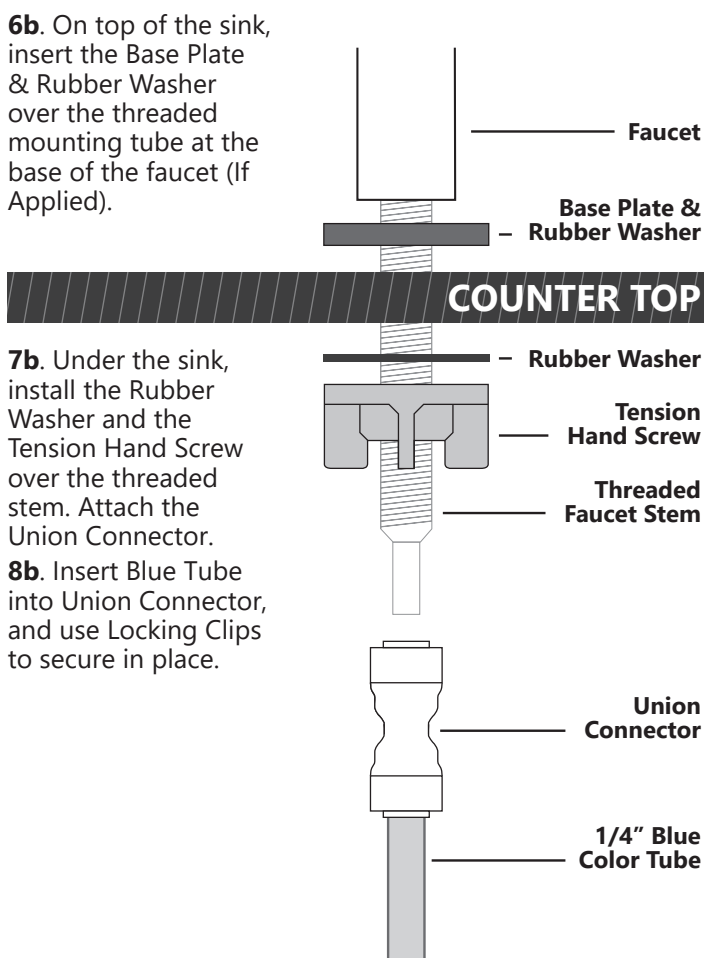
4. Enlarge the hole using a 1/4 inch (6.4mm) drill bit. Use factory approved method or approved plumbing practice to drill hole in sink.

5. Enlarge the hole to 1/2-inch diameter. Keep bit well lubricated and drill slowly.

Version 1



Version 2 - Quick Connect



For service assistance or resolution of a service problem, or for product information or operation, call:

Express Water Response Center **1-800-992-8876**

Monday - Friday **10 am - 5 pm PST**

www.ExpressWater.com