



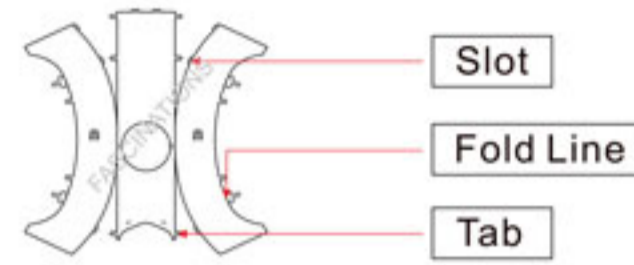
It is highly recommended that you visit www.metalearth.com/360/icx123 to see the completed model before assembling your own

ICX123



THE MOUNTAIN

TO CREATE THE BEST CONNECTIONS



Legends:

- E** Engraved/Color side
- NE** Non-engraved/Silver side
- Attention point
- Insert tab and bend 90 degrees
- Insert tab and twist 90 degrees

Recommended tools:

-Wire cutters: helpful for taking parts from the metal sheets.



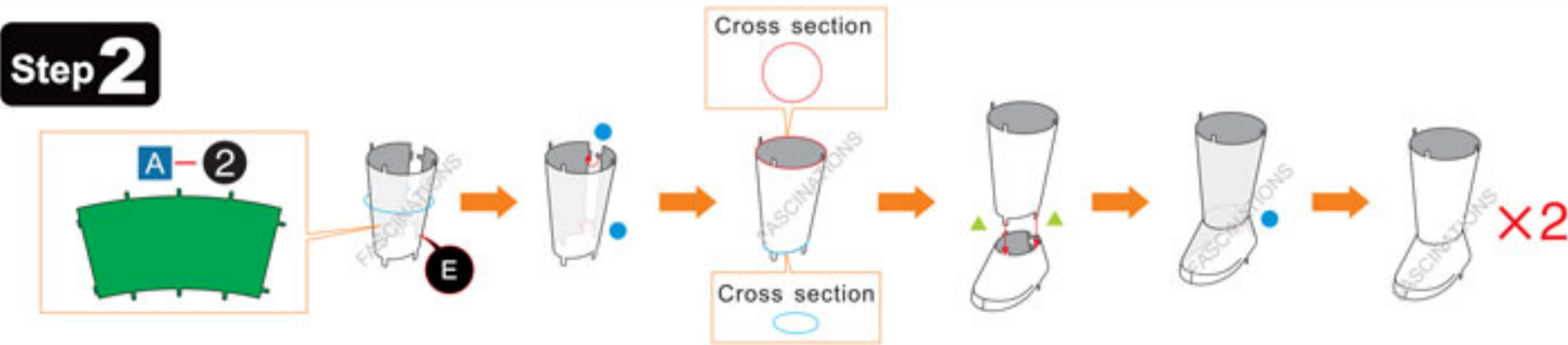
-Tweezers or needle nose pliers: helpful for folding parts, bending and twisting tabs.



Assembly tip:

If needed, slightly twist tabs to hold parts together then untwist and bend them down for a nice finish

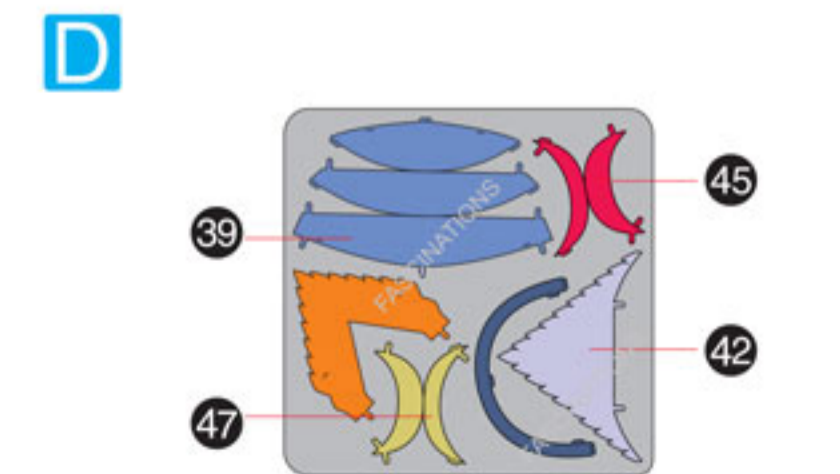
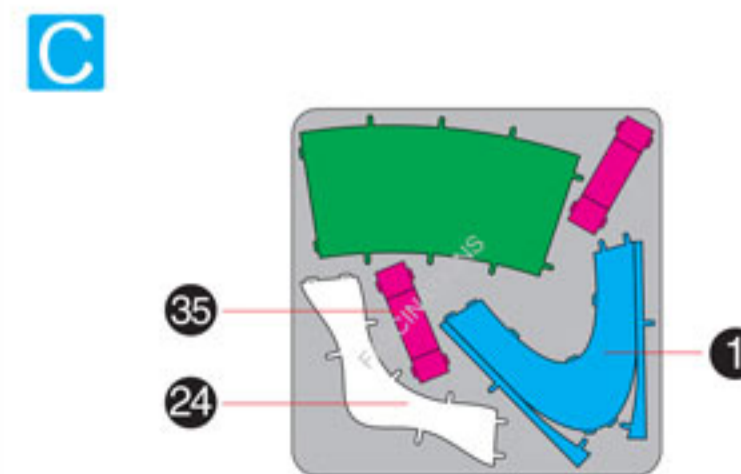
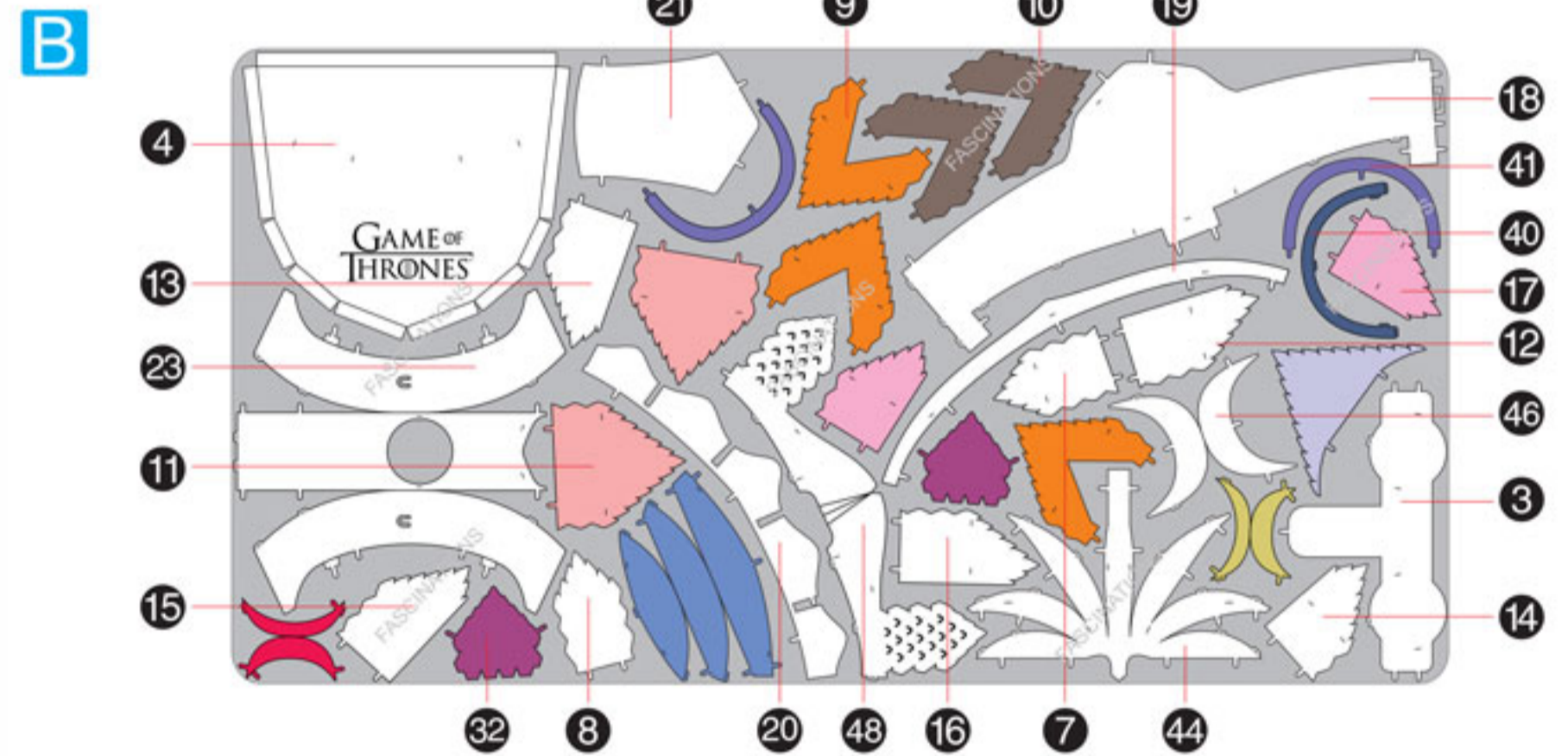
ASSEMBLY STEPS

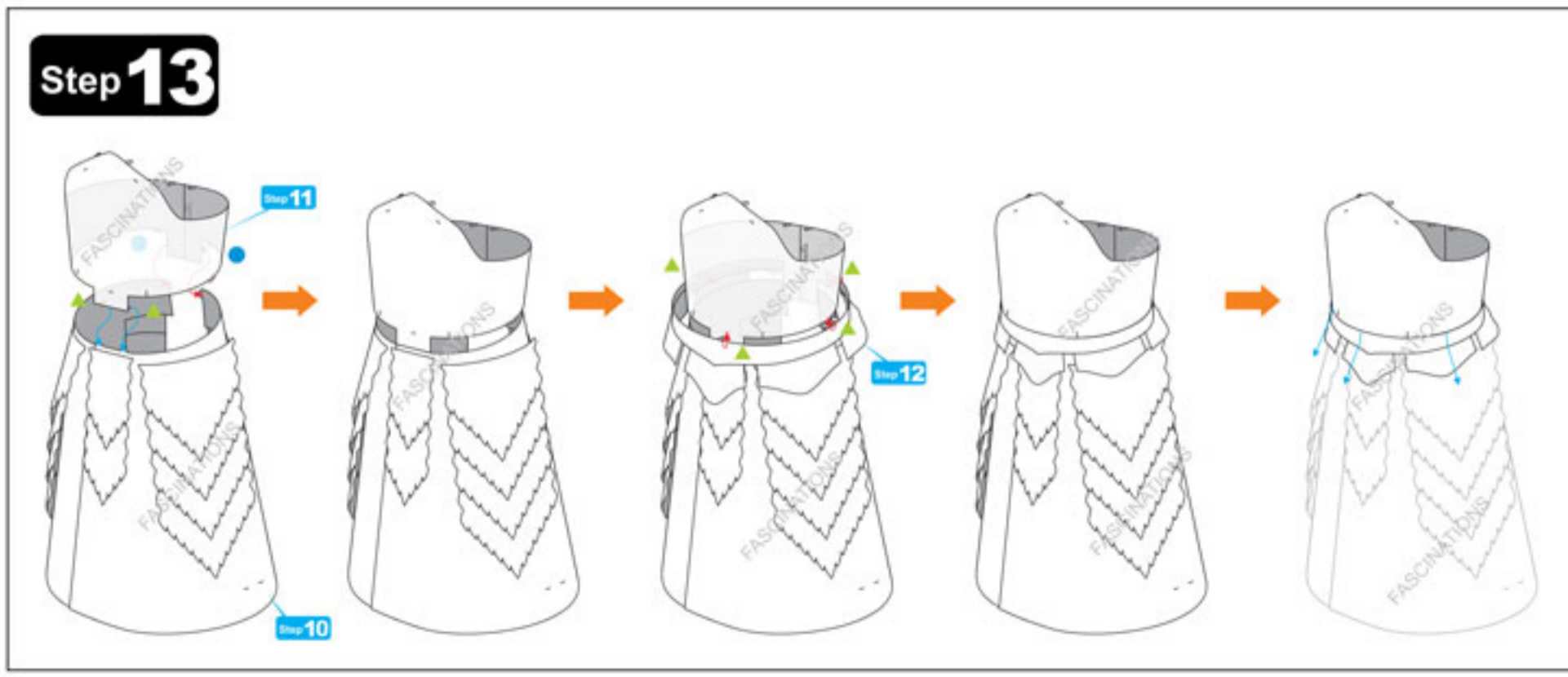
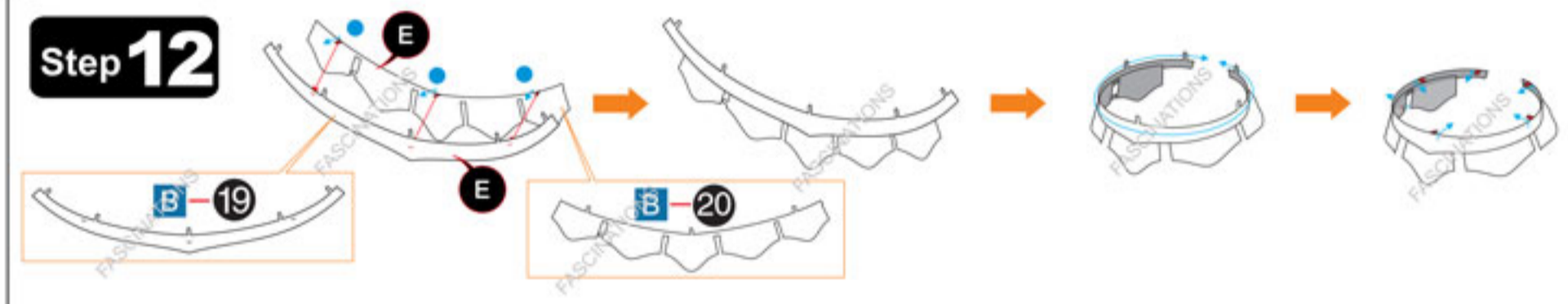
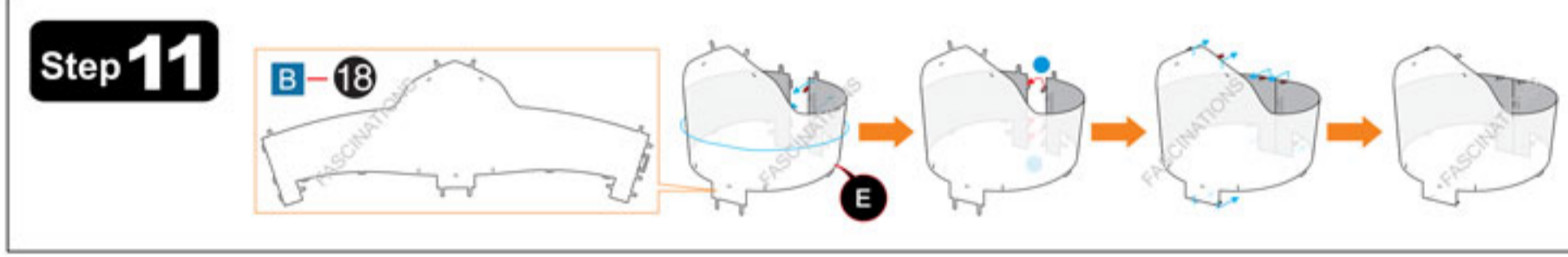
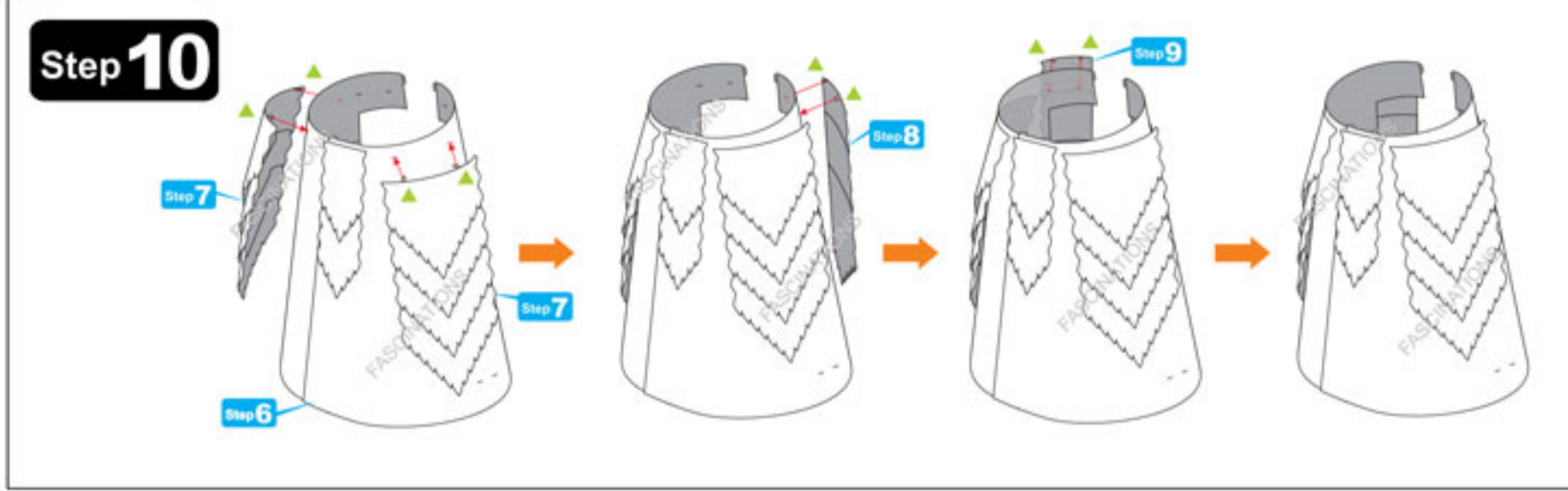
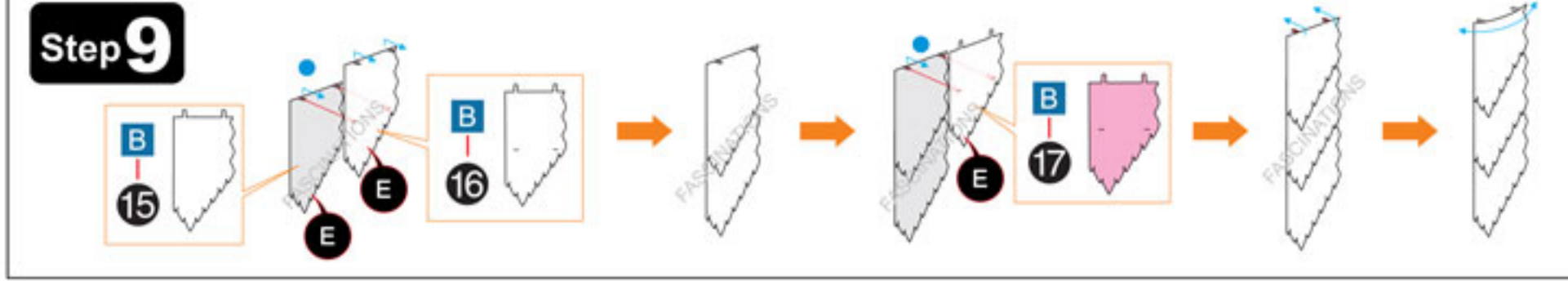
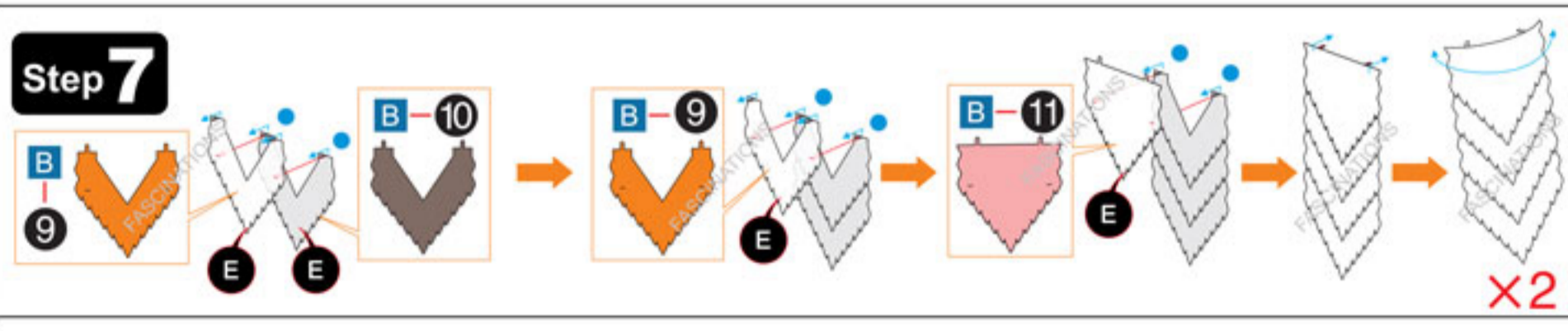
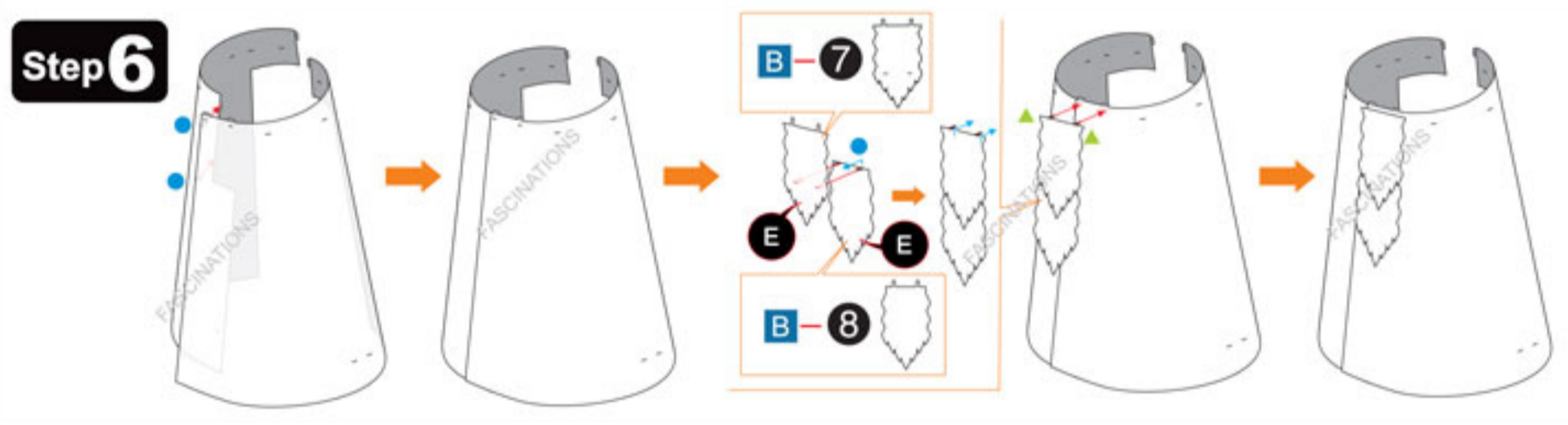
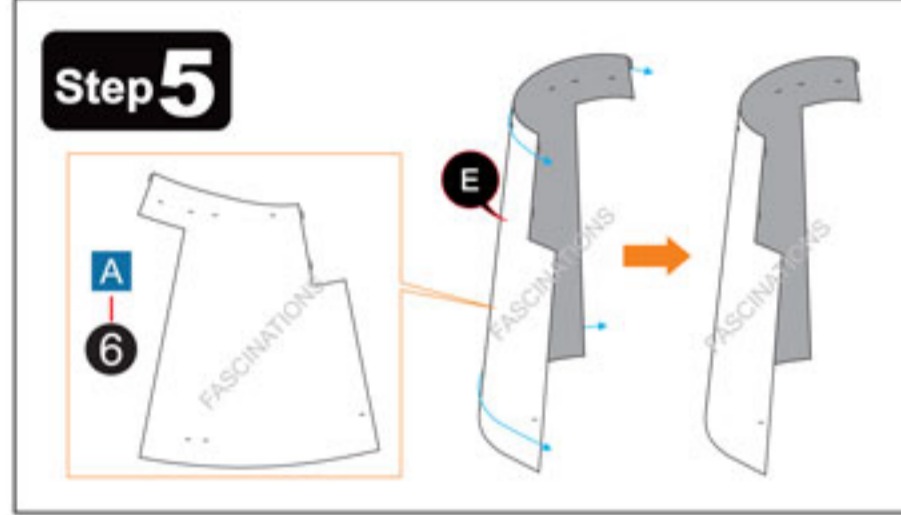
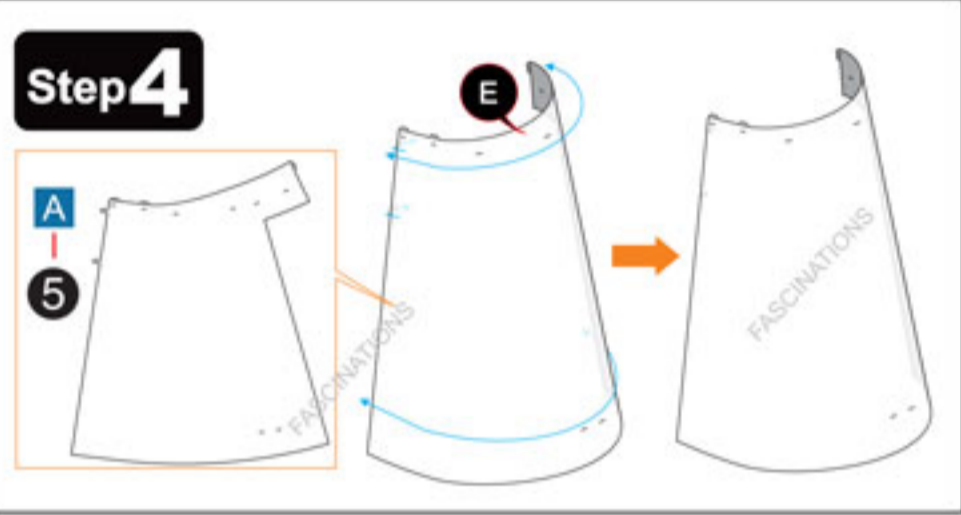
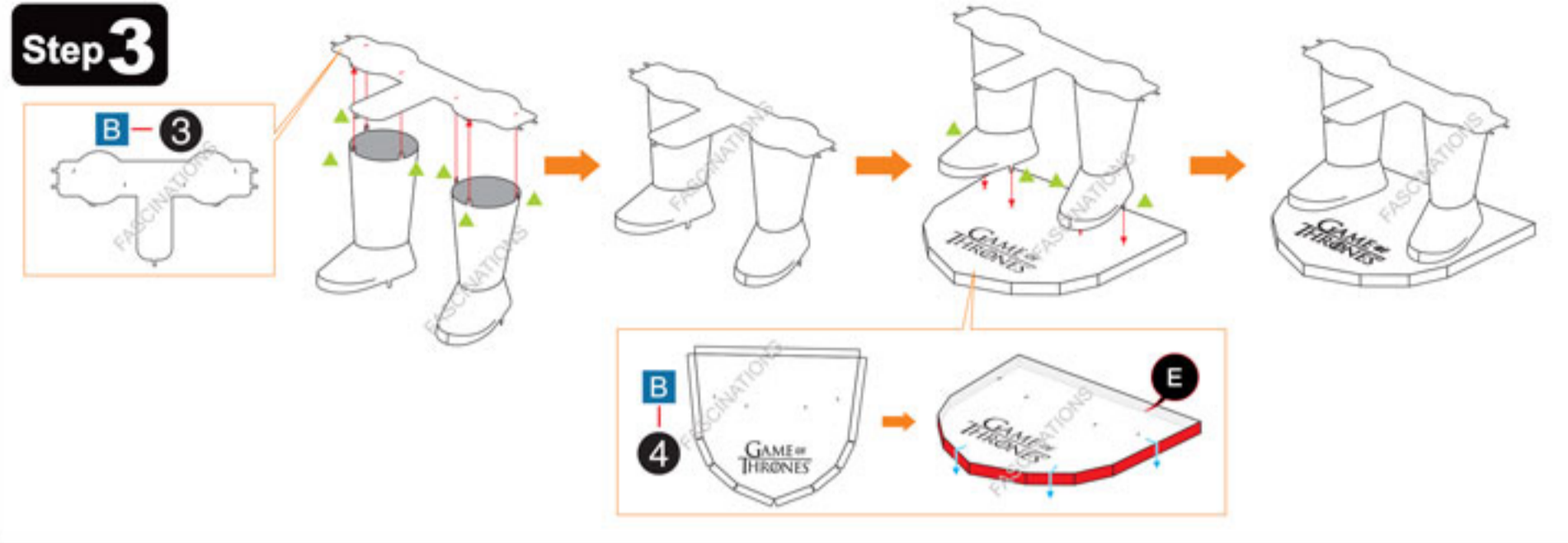


In order to avoid possible injury from sharp edges, please carefully discard the metal sheets after parts have been removed.

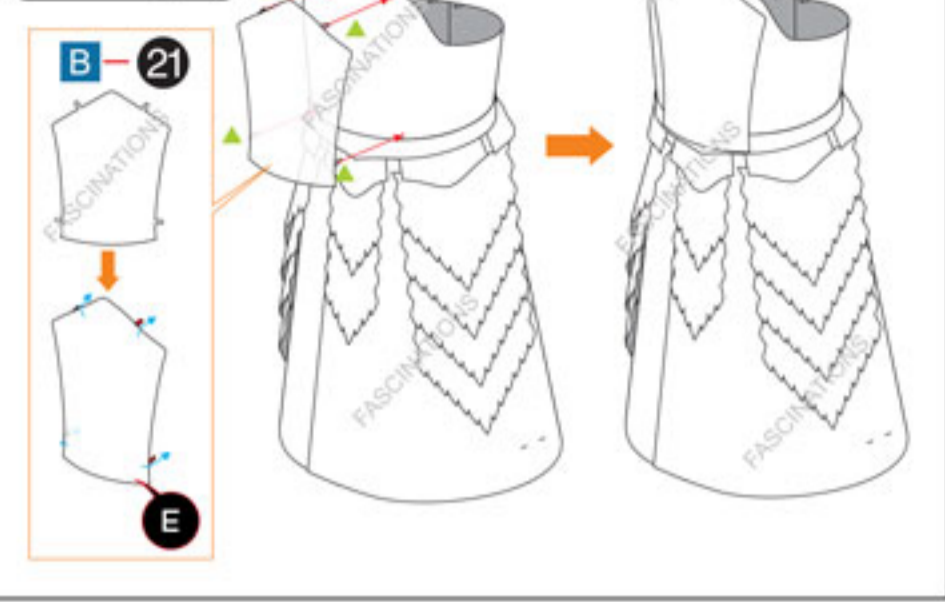
METAL SHEETS

Parts that are in the same color are duplicates

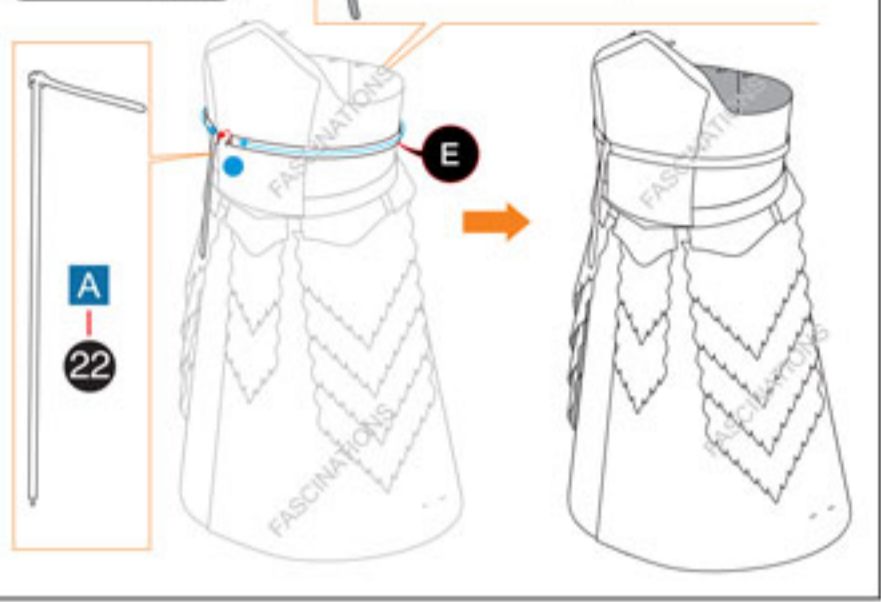




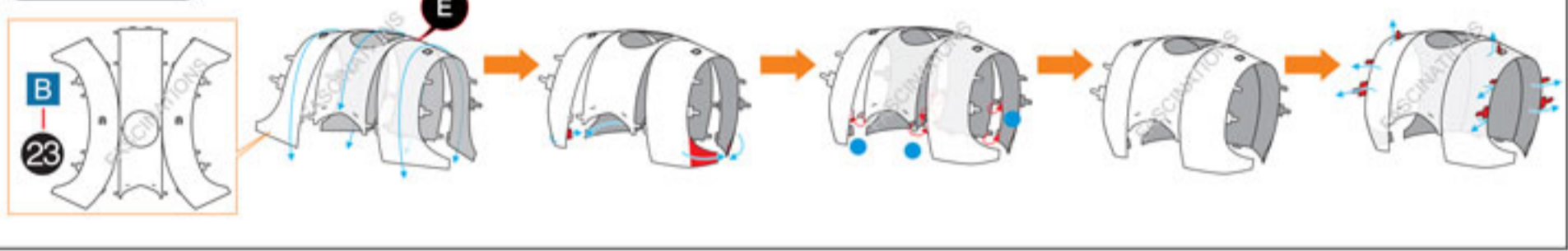
Step 14



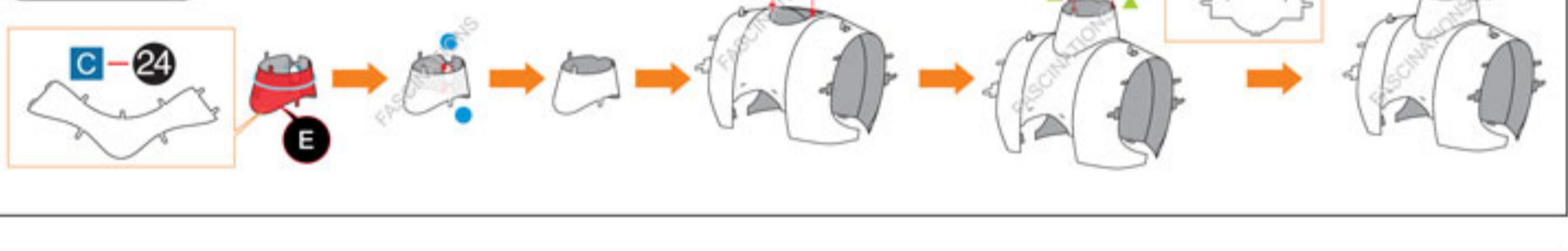
Step 15



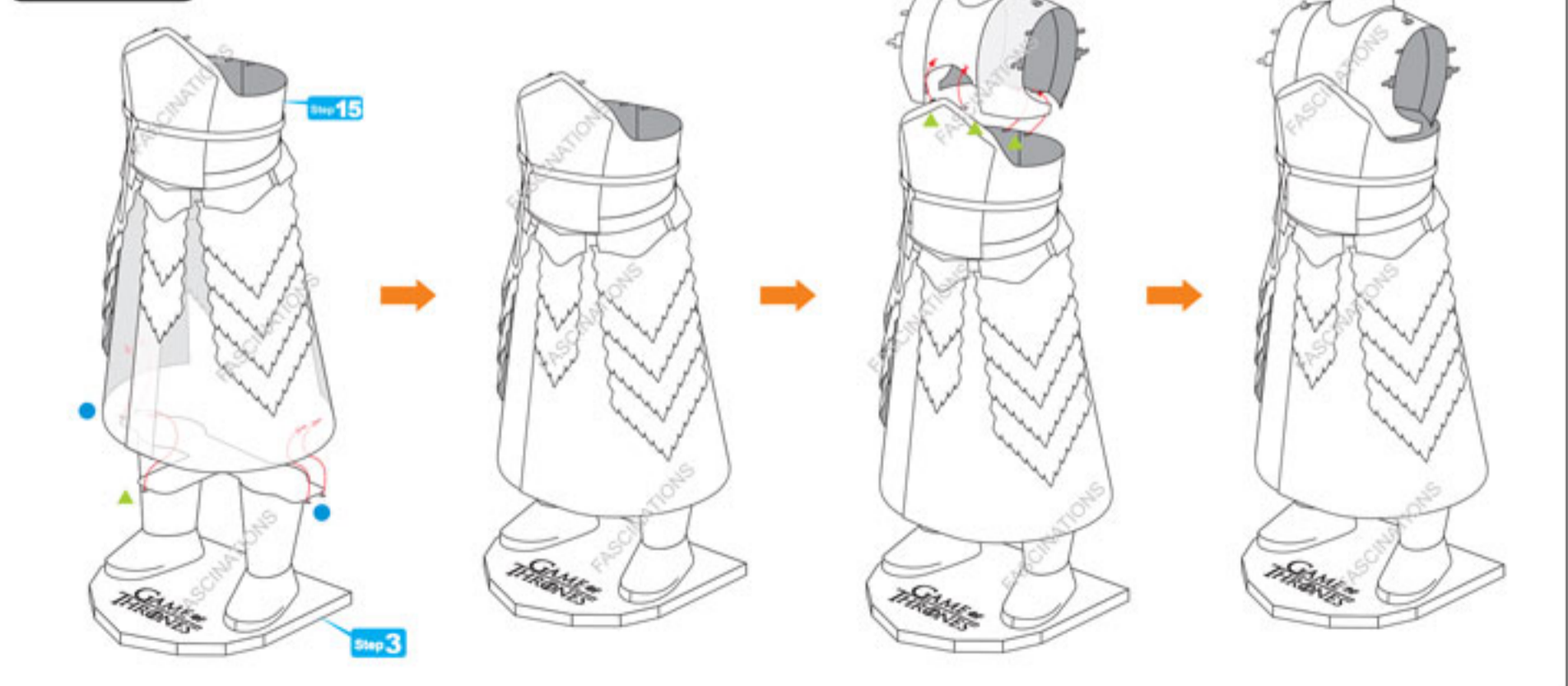
Step 16



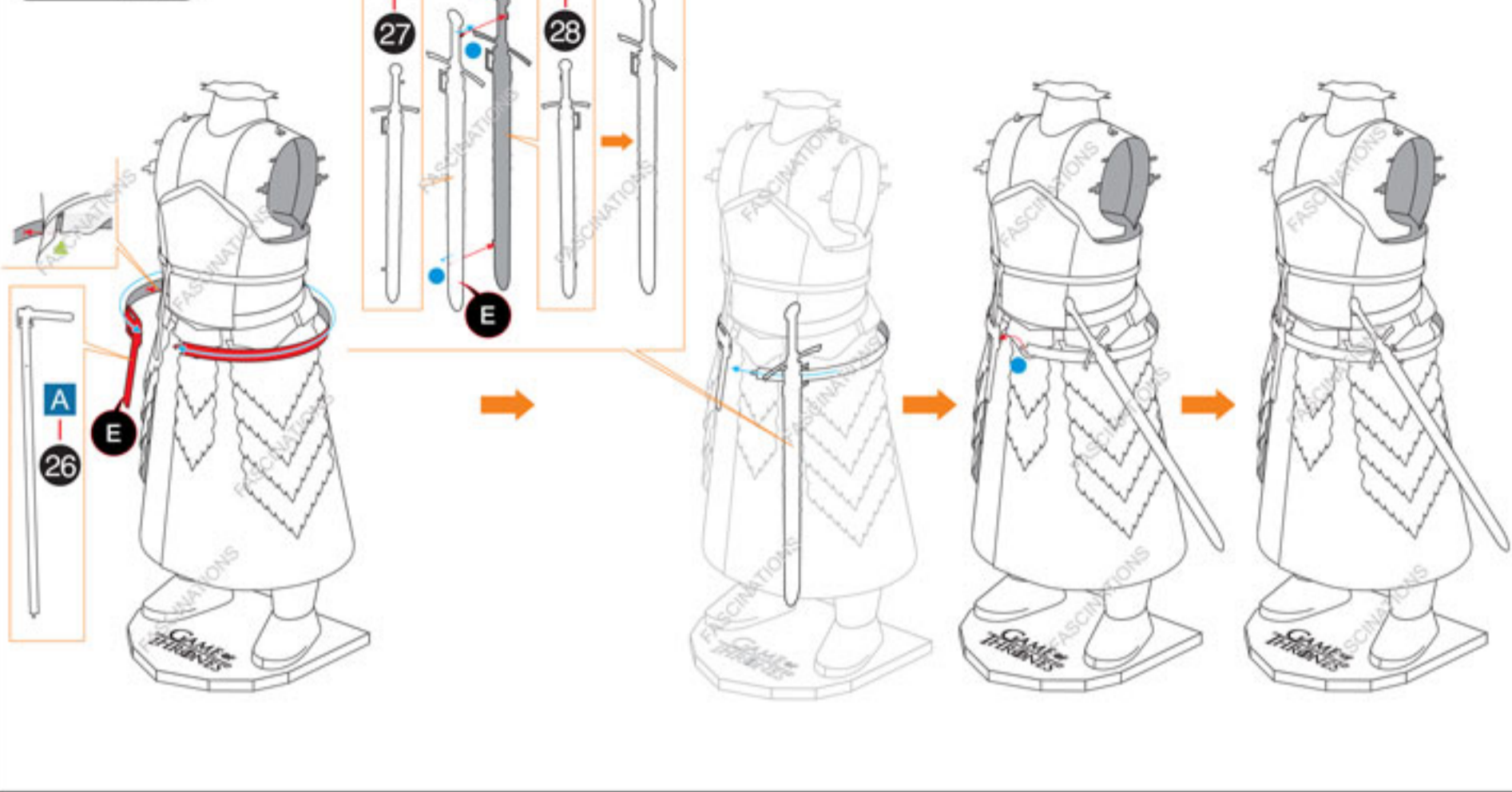
Step 17



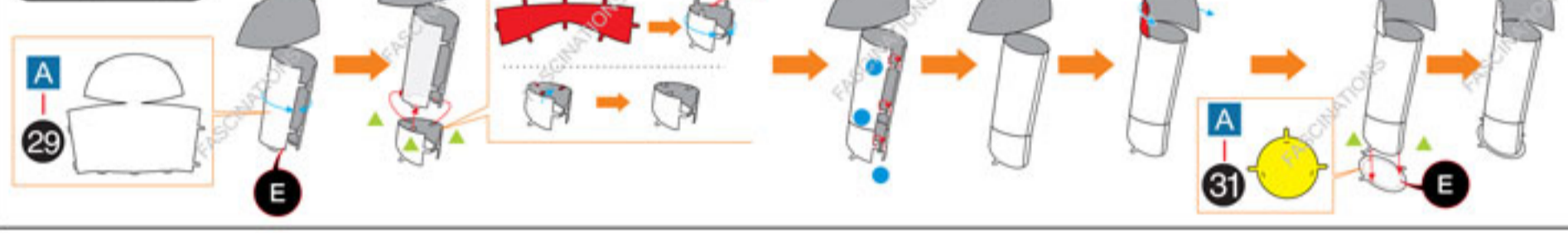
Step 18



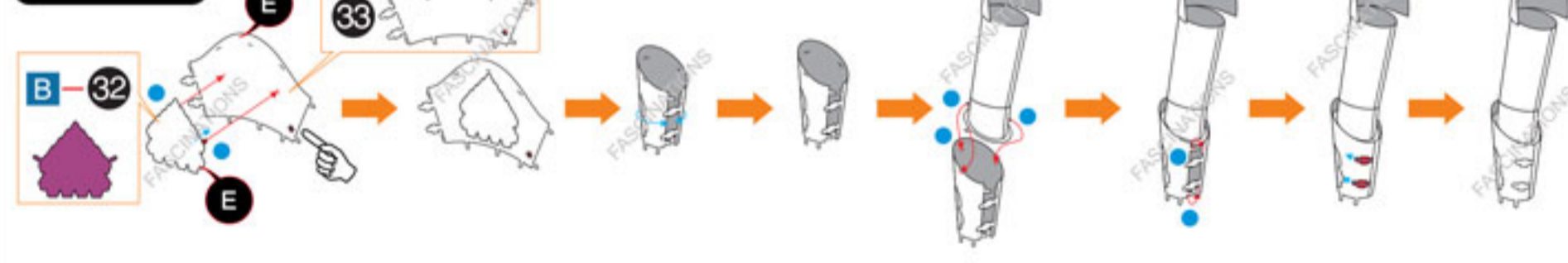
Step 19



Step 20



Step 21



Step 22

