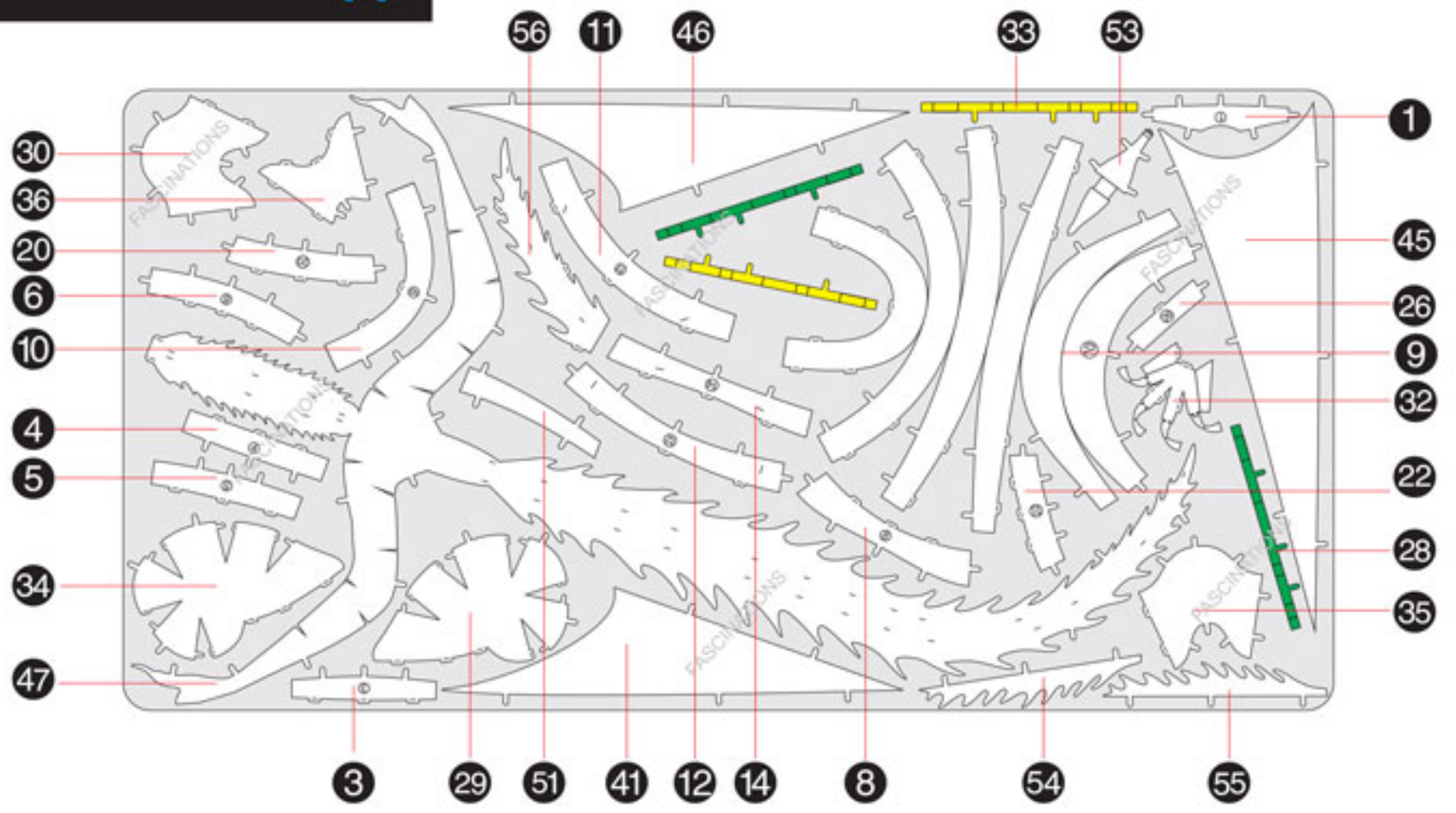


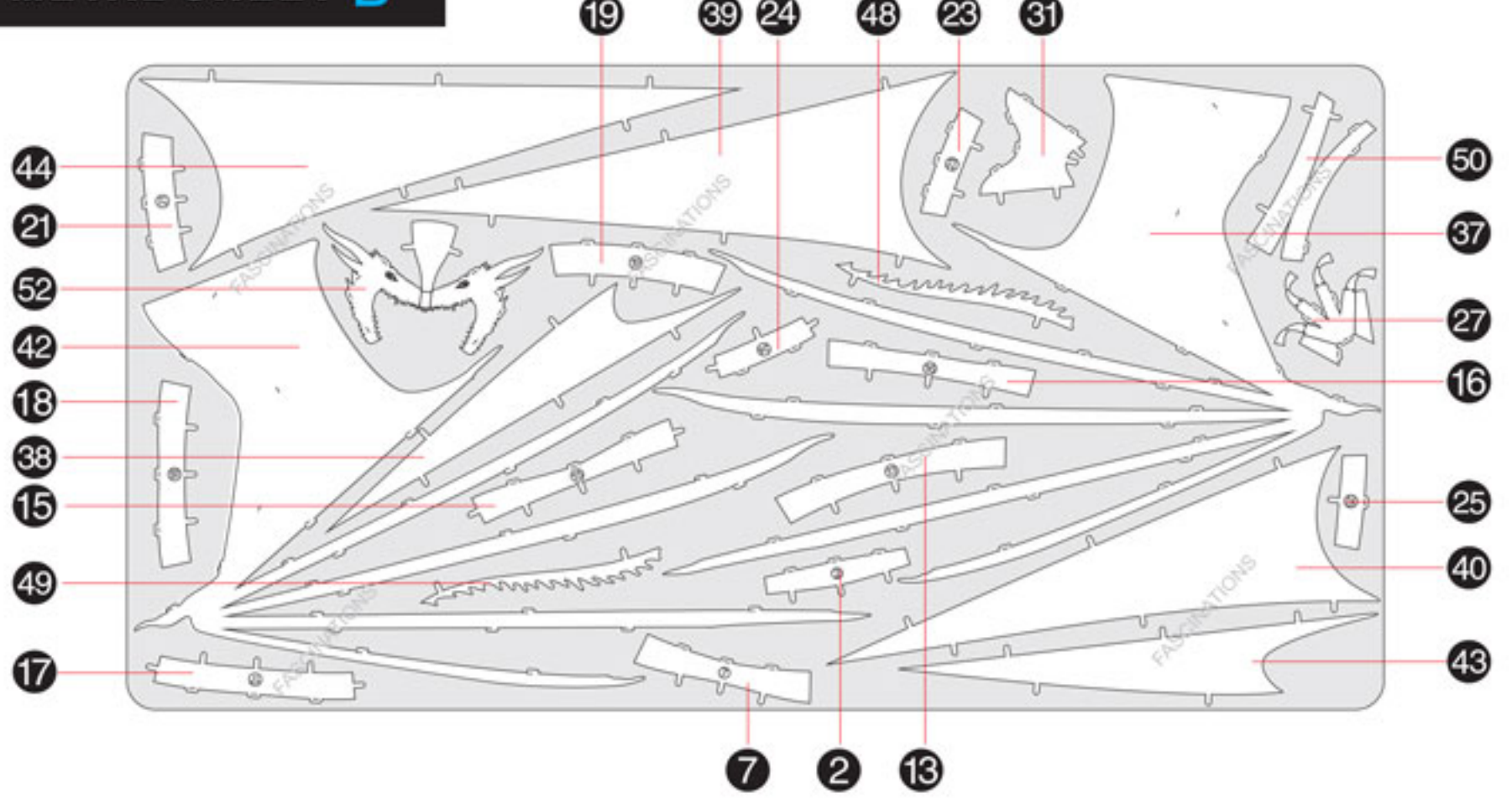


It is highly recommended that you visit www.metalearth.com/360/icx124 to see the completed model before assembling your own

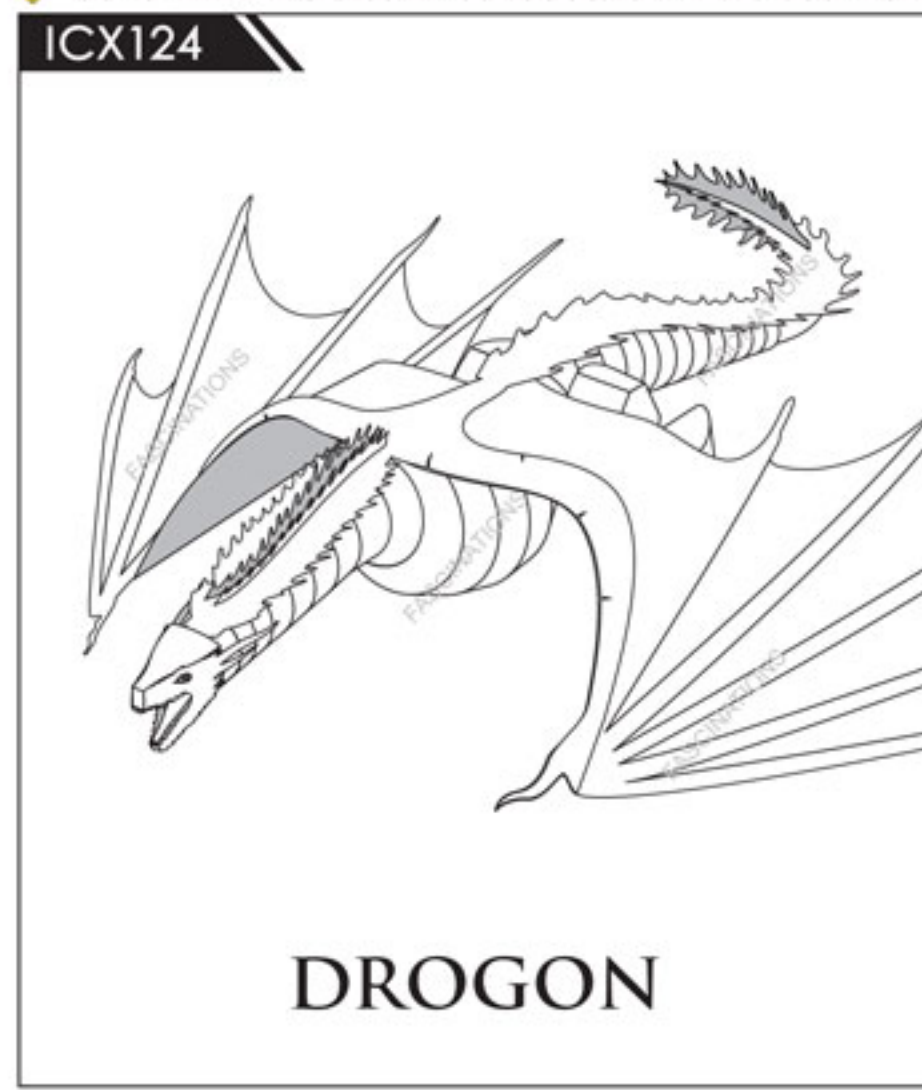
METAL SHEET A



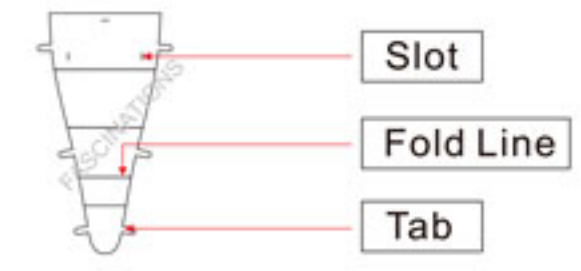
METAL SHEET B



In order to avoid possible injury from sharp edges, please carefully discard the metal sheets after parts have been removed.



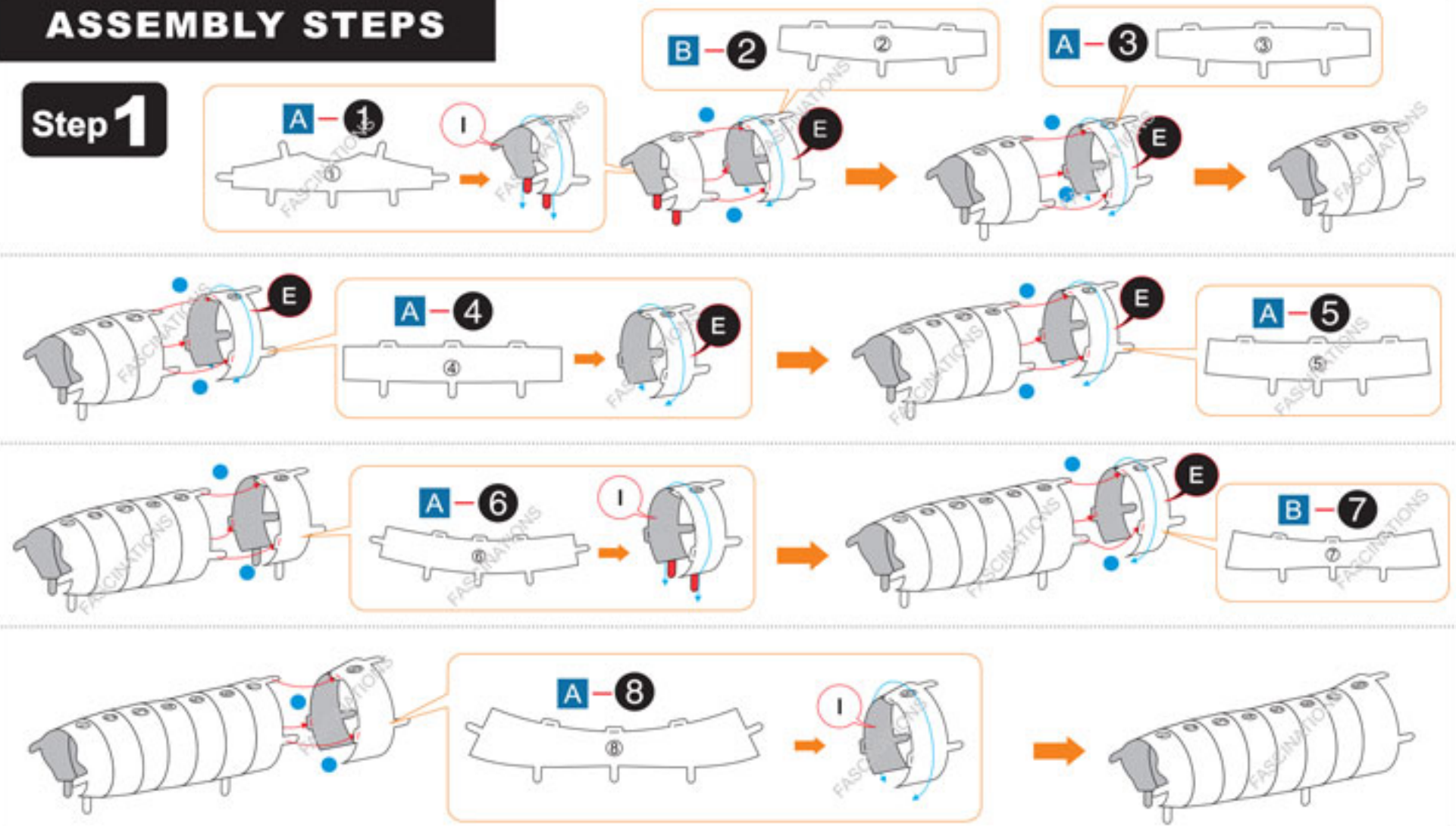
TO CREATE THE BEST CONNECTIONS



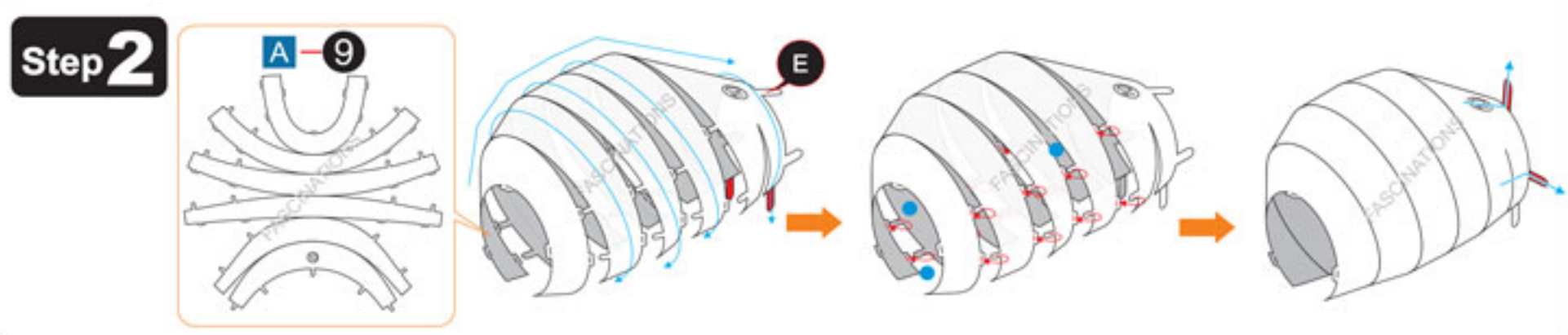
- Legends:**
- Engraved side / Glossy side
 - Inverse side
 - Attention point
 - Insert tab and bend 90 degrees
 - Insert tab and twist 90 degrees
- Recommended tools:**
- Wire cutters: helpful for taking parts from the metal sheets.
 - Tweezers or needle nose pliers: helpful for folding parts, bending and twisting tabs.
- Assembly tip:**
If needed, slightly twist tabs to hold parts together then untwist and bend them down for a nice finish

ASSEMBLY STEPS

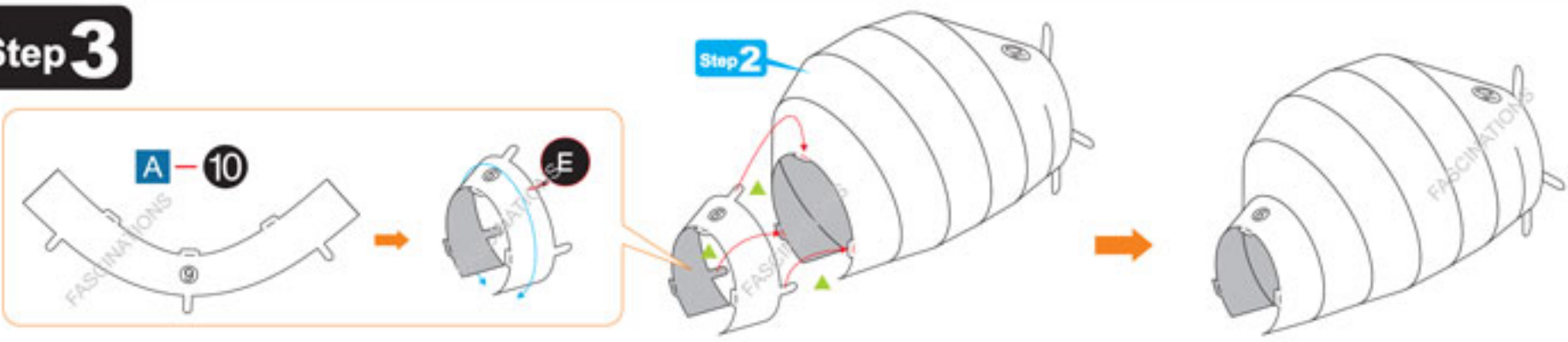
Step 1



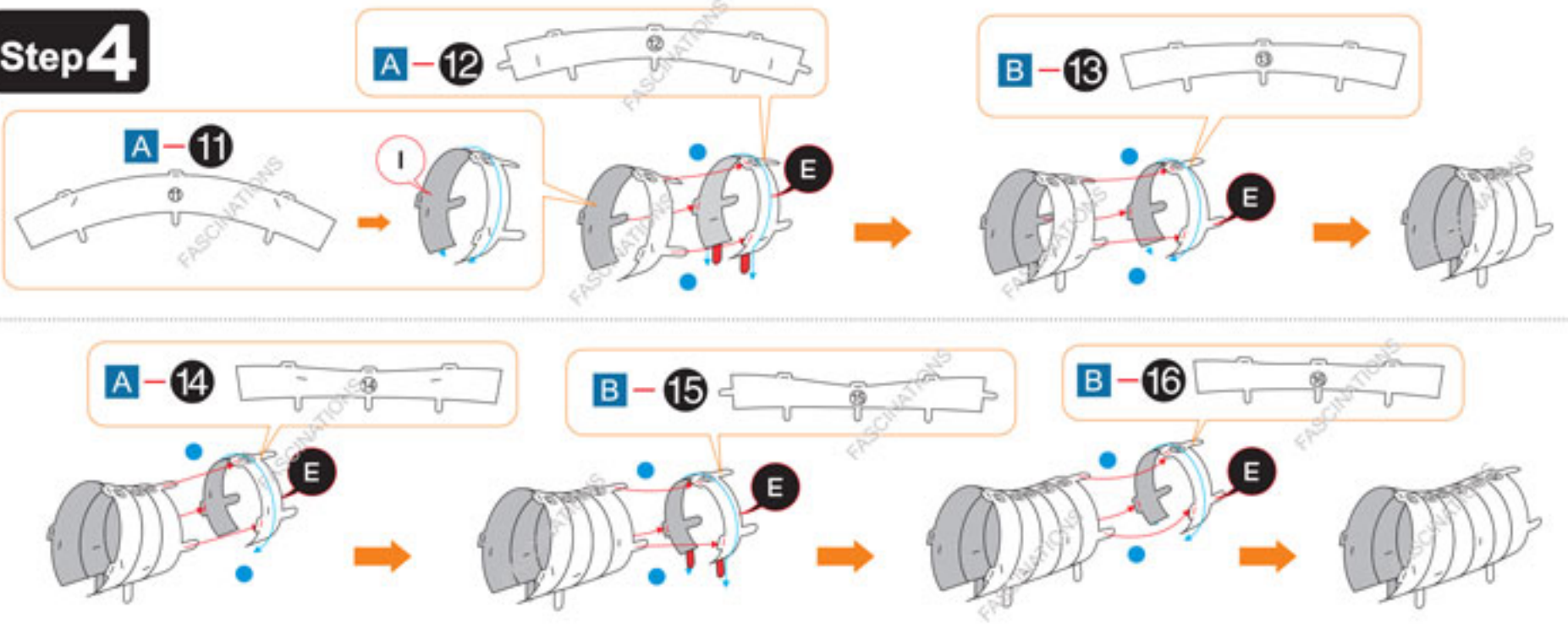
Step 2



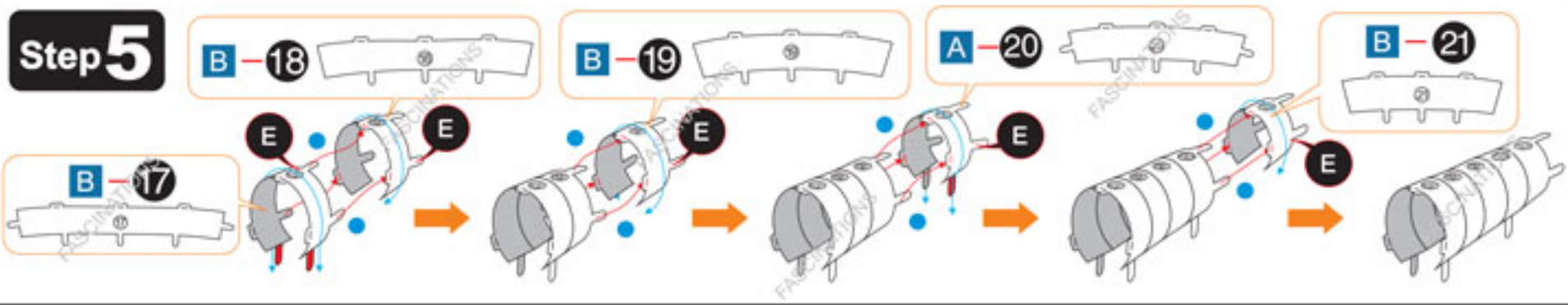
Step 3



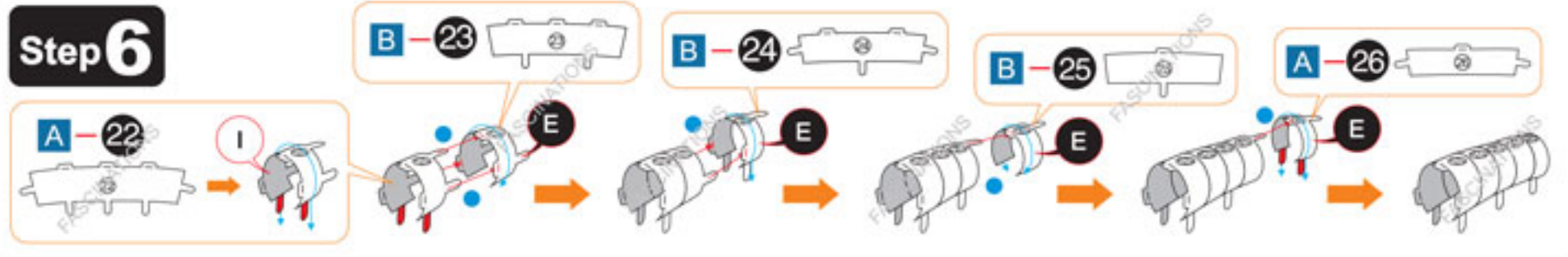
Step 4



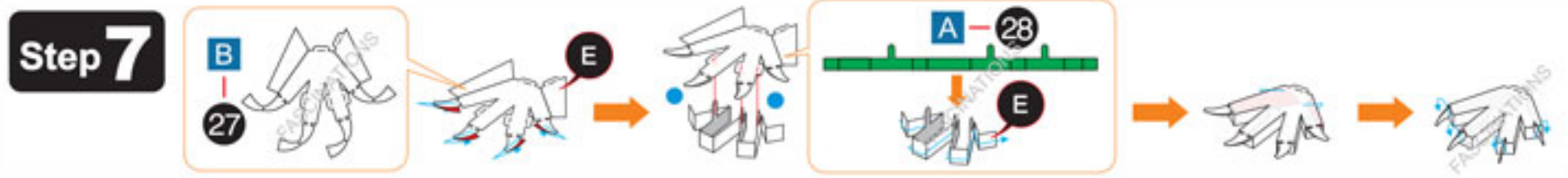
Step 5



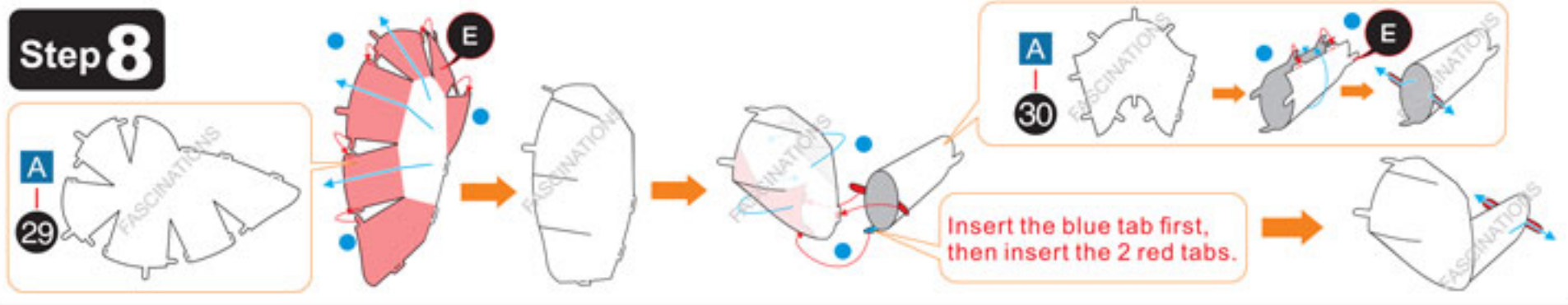
Step 6



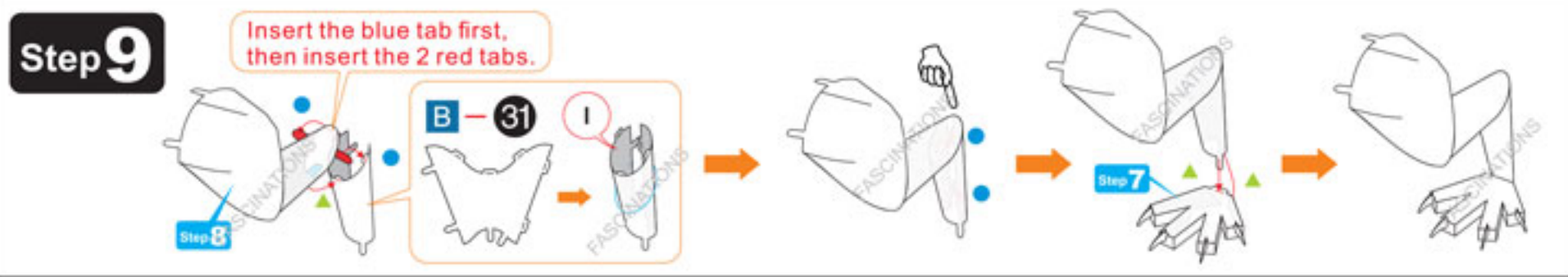
Step 7



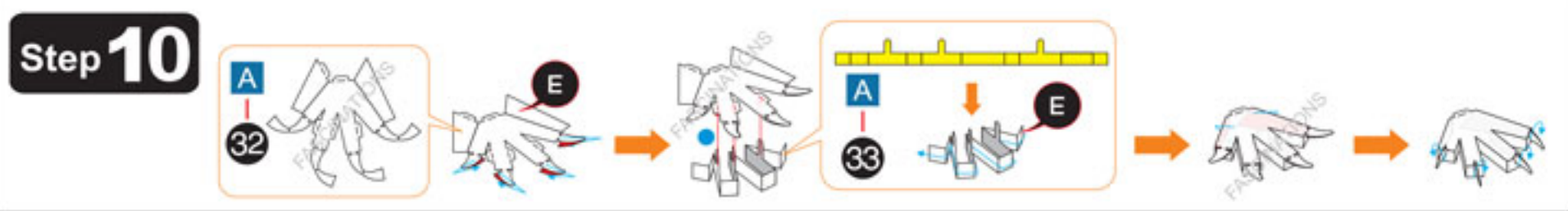
Step 8



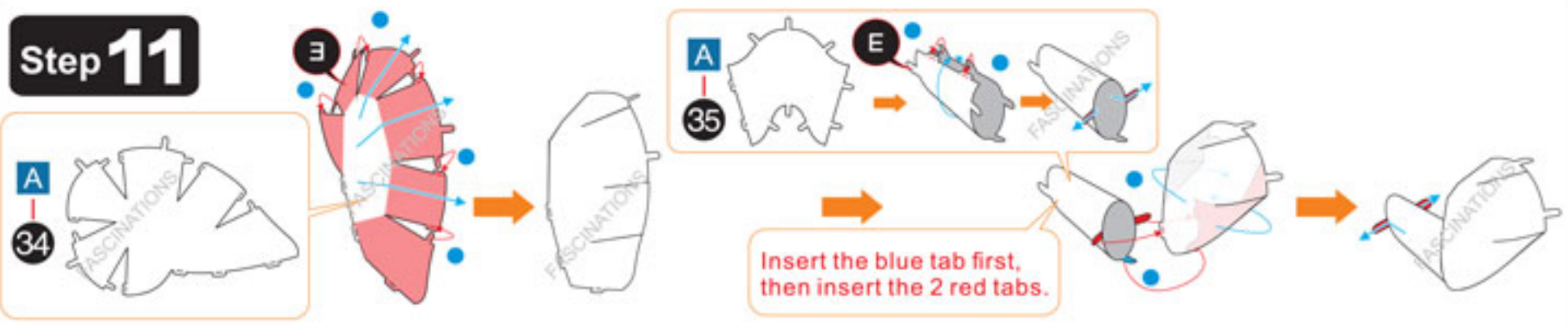
Step 9



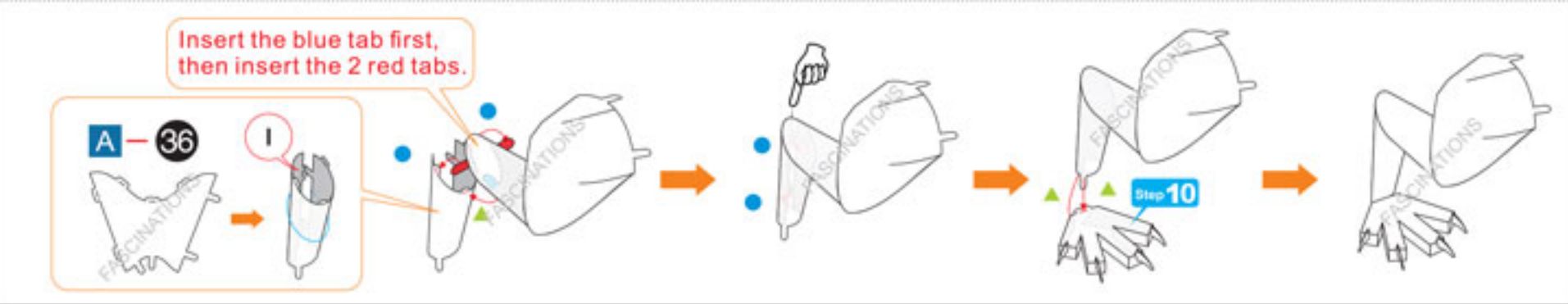
Step 10



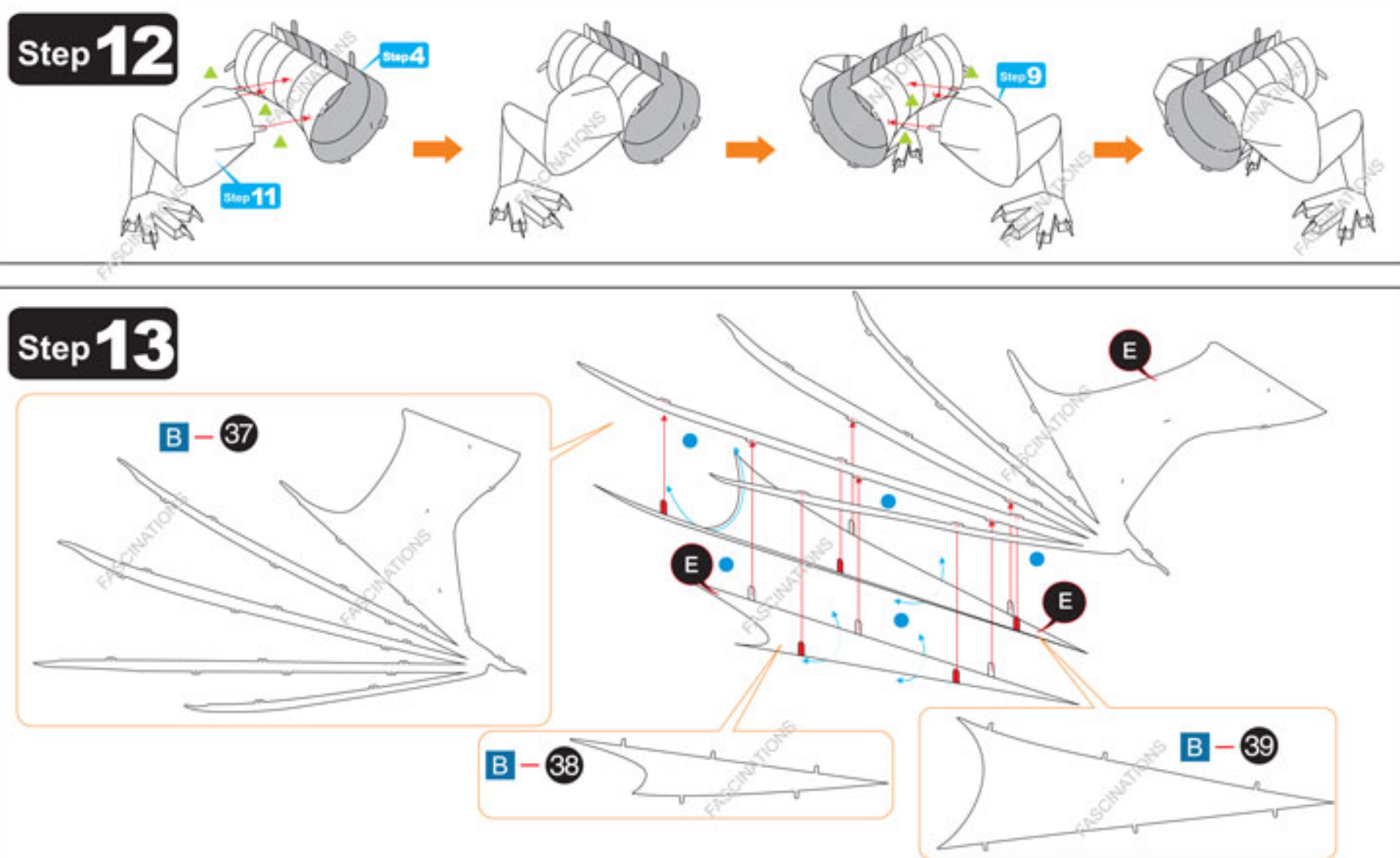
Step 11



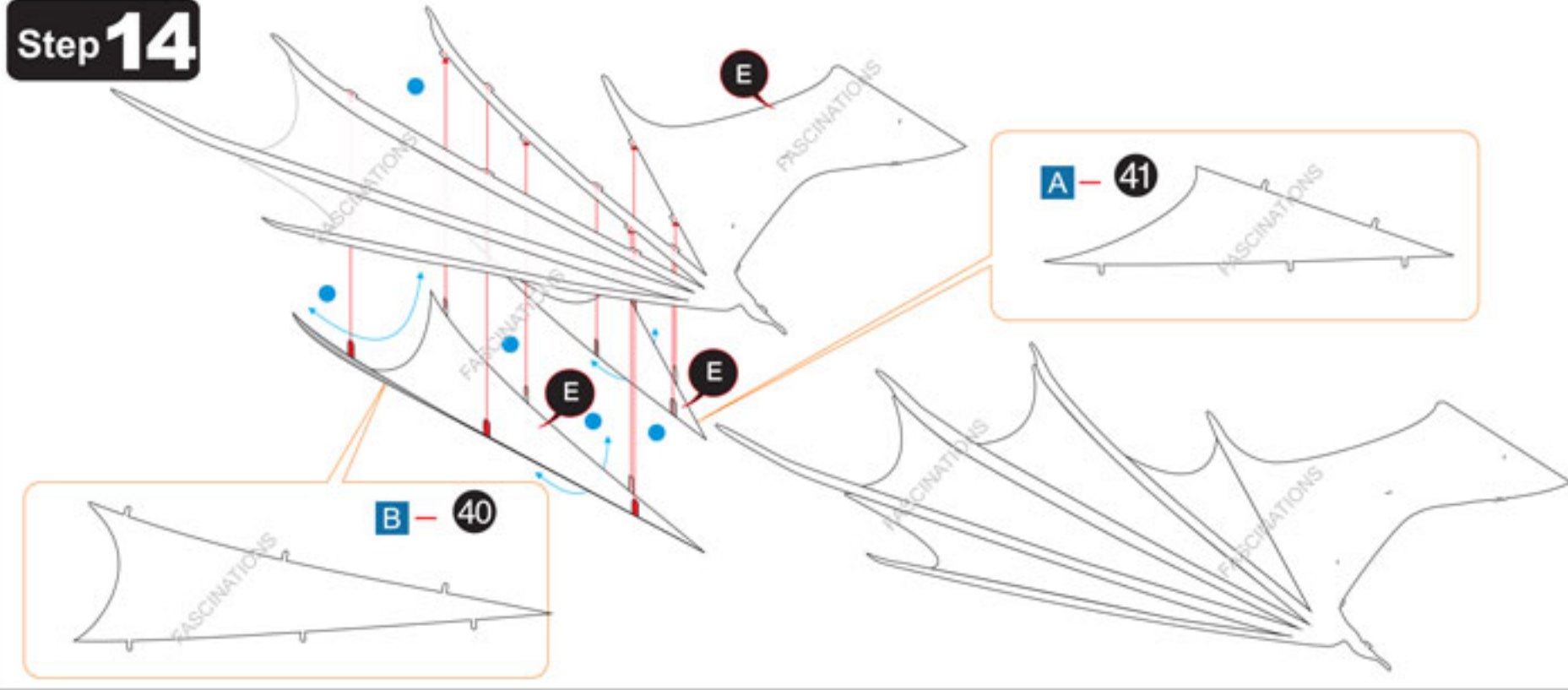
Step 12



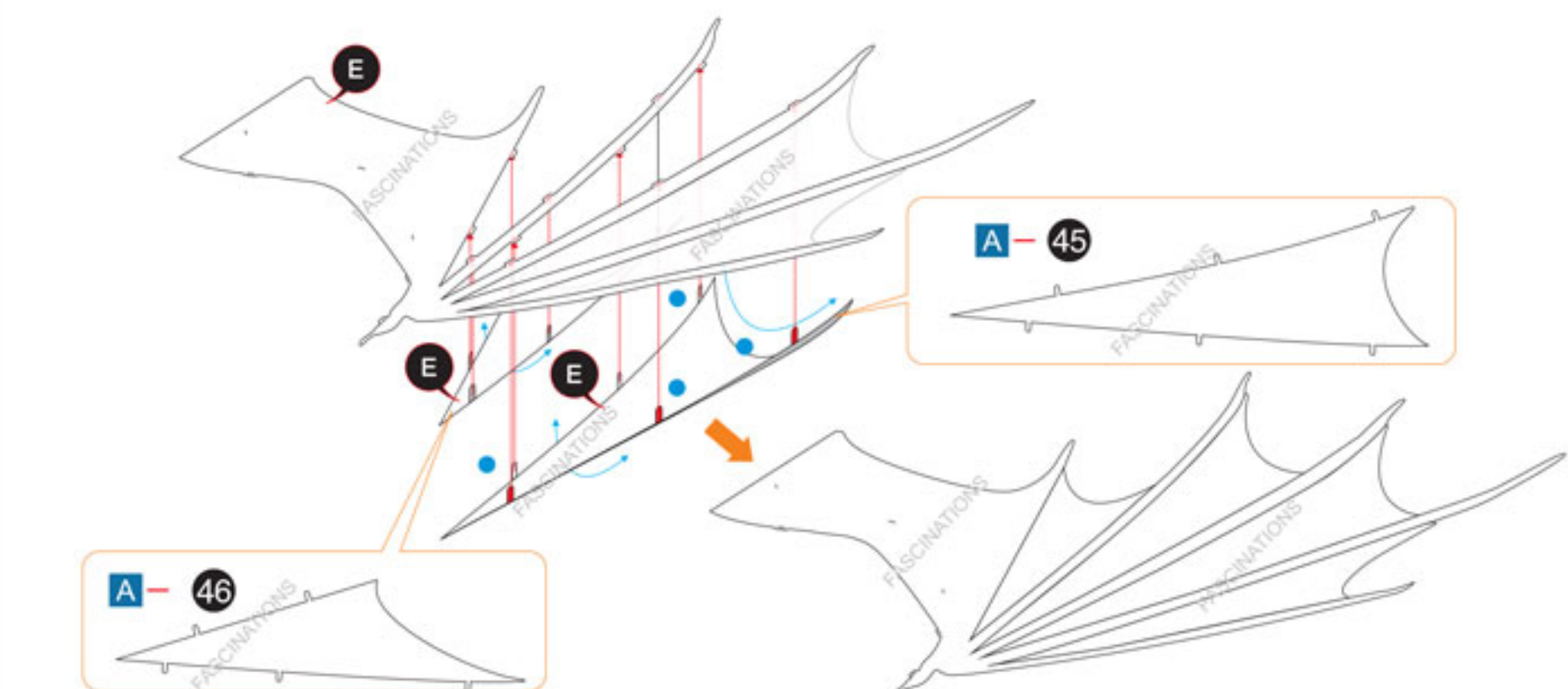
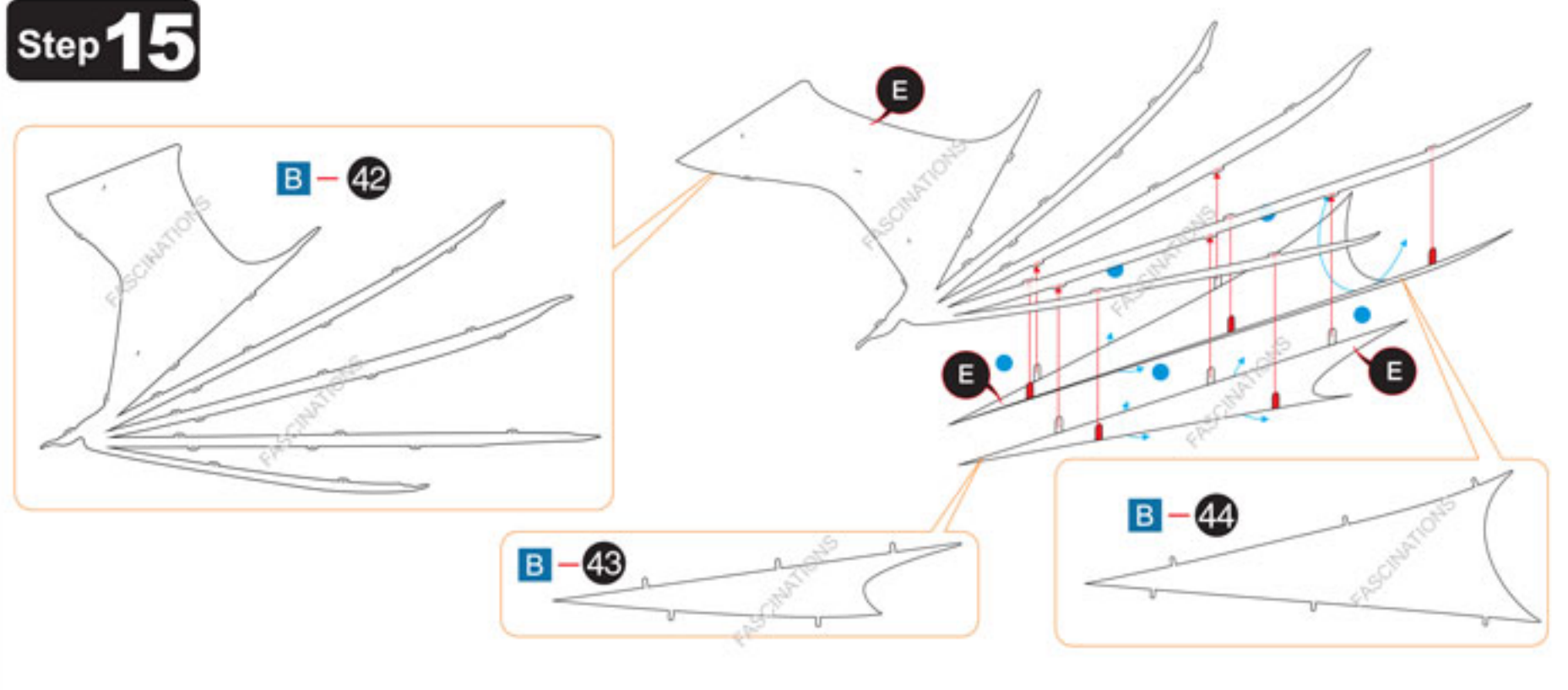
Step 13



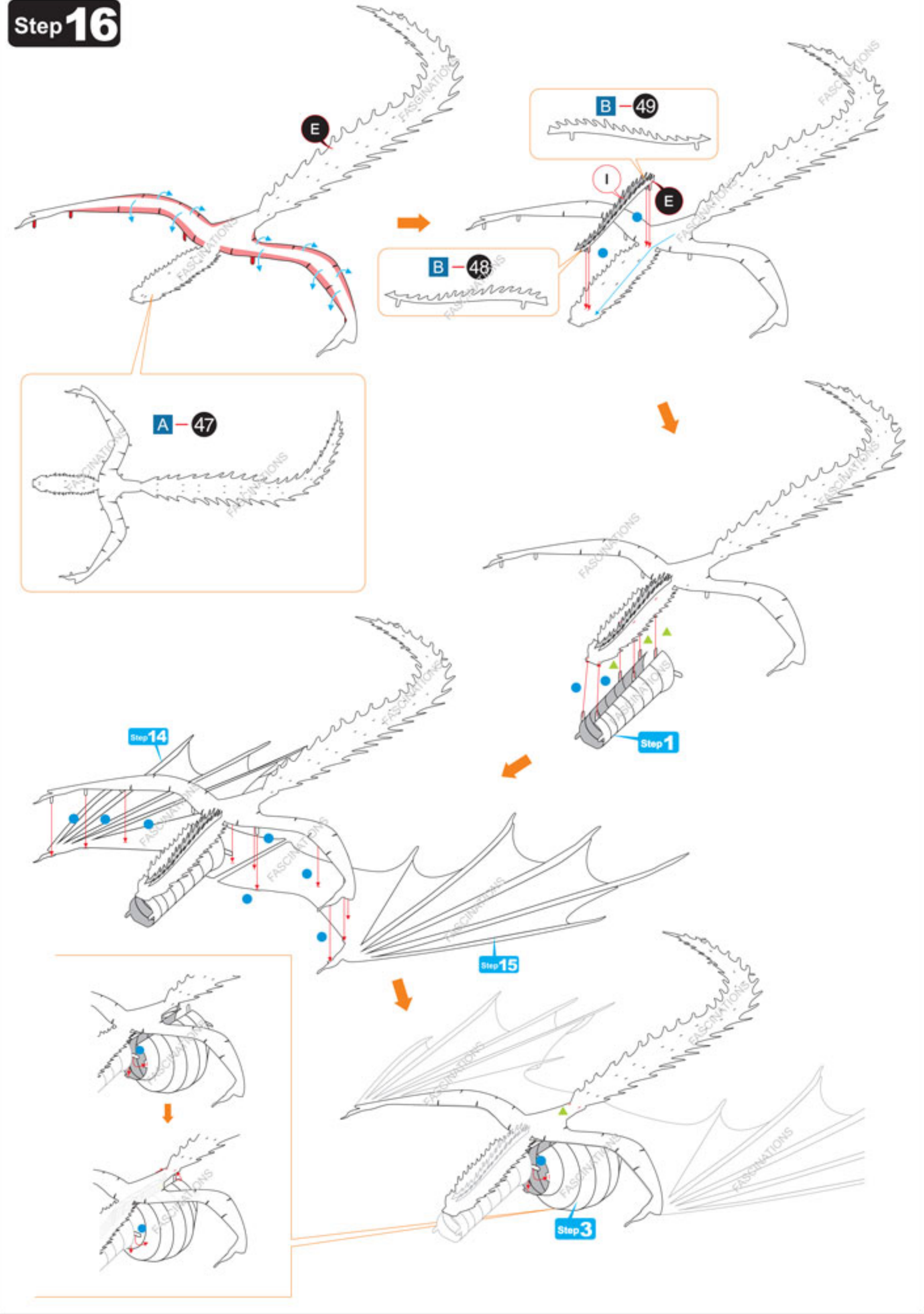
Step 14



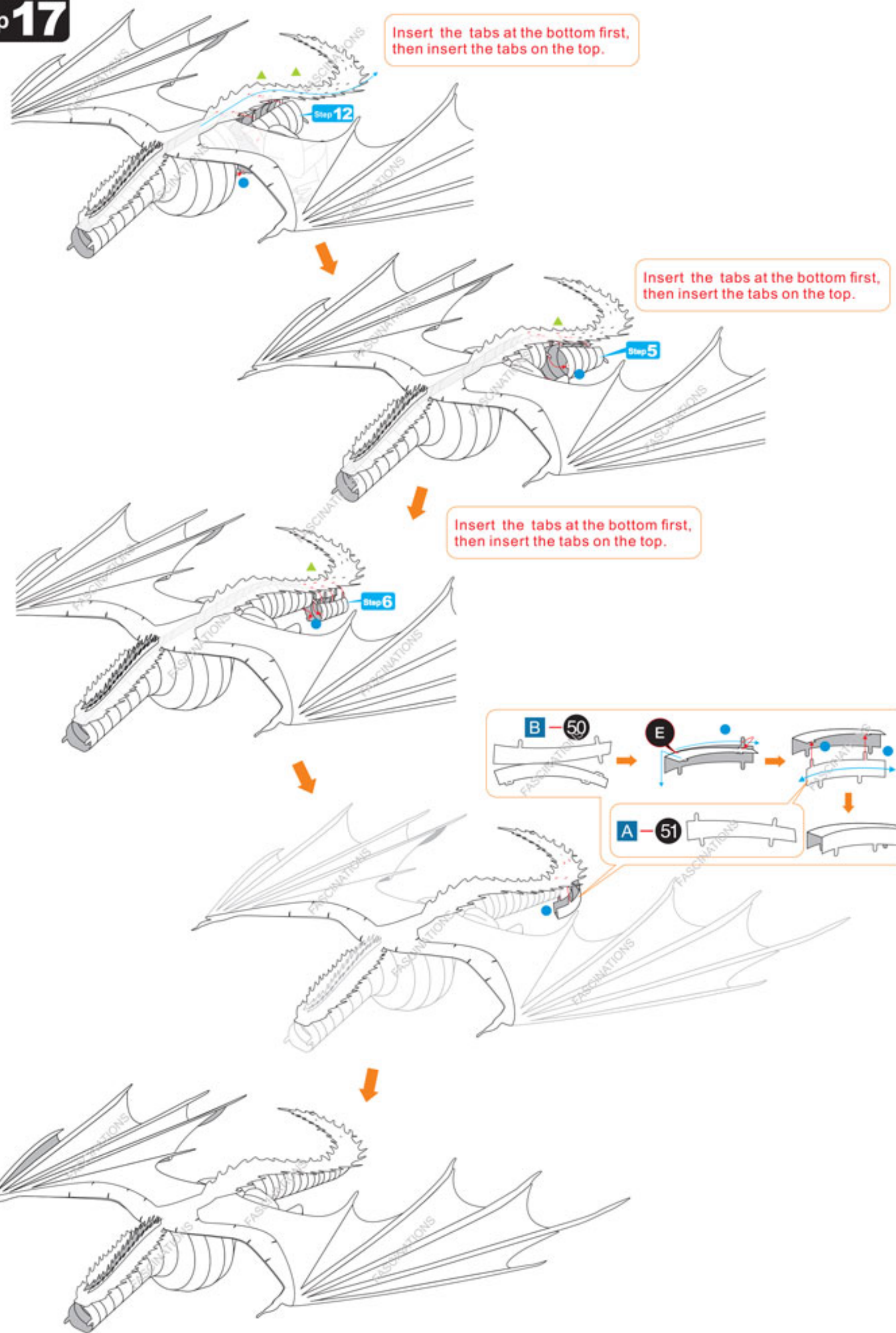
Step 15



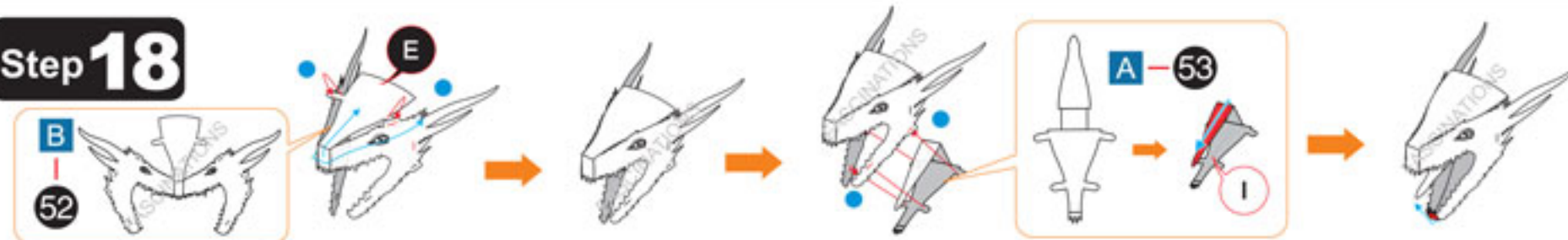
Step 16



Step 17



Step 18



Step 19

