

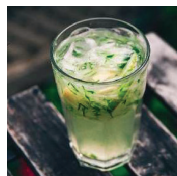
What Will You Sparkle Next? The Only Limitation Is Your Imagination



Orange Juice



Gin Fizz



Fruit Infused Water



Mimosa



Grapefruit Juice



Lemonade



Gatorade



Hard Seltzer



Wine



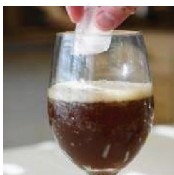
Iced Tea



Margarita



Recharge Flat Beer



Cold Brew Coffee



Try Drinkmate's premium Italian syrups,
bursting with flavor from real fruit and natural flavors

drinkmate
www.drinkmate.us

drinkmate[®] LUX

Make Life Sparkle[™]



VERSION 710-A1

USER MANUAL
FOR ALL LUX MODELS



LUX with Stainless Steel Bottle

LUX with PET Stainless Bottle



Thank You
FOR YOUR PURCHASE

The **drinkmate** LUX makes pro level drinks easily possible.

With the beauty and durability of stainless steel, **drinkmate** LUX makes every drink a deluxe experience.

Get ready to make life sparkle!

FRUIT INFUSED SPARKLING WATER

Add your favorite sliced or whole fruit to a bottle of water-



Refrigerate for several hours or overnight-

Carbonate with or without fruit in bottle-

GRAPEFRUIT GIN FIZZ

- 1.5 oz gin
- 0.5 oz elderflower liqueur
- 0.5 oz fresh squeezed lemon juice



- 1 tsp Drinkmate Grapefruit syrup
- 3 oz water
- Pour over ice and garnish

CANADIAN CREAM SODA



- 4 oz water
- 4 oz apple cider
- 1/2 oz real maple syrup
- 3 drops vanilla extract

HOMEMADE LEMON LIME SODA

- 2 oz Freshly Squeezed Lemon Juice
- 2 oz Freshly Squeezed Lime Juice



- 2 tsp Honey
- 4 oz Water

STARTER RECIPES

Besides carbonating water, wine, or other single ingredient drinks, here are some popular recipes to get you started on exploring new kinds of sparkling beverages. Cheers!

Find more recipes at our website and social media sites. Please share your own favorite new drink recipes with all Drinkmate fans!

Instructions: Combine all ingredients before sparkling for best mixing. Use coldest beverages possible for best carbonation results.

HARD SELTZER



4 parts cold water
1 shot flavored vodka or gin

MIMOSA



½ white wine
½ orange juice

ICED TEA HIGHBALL



4 parts iced tea
1 shot scotch or whiskey
Pour into ice filled glass.

CUCUMBER SPARKLER

Peel and slice 1 cucumber and place slices in pitcher of water.



Add simple syrup to sweeten.
Refrigerate for at least an hour.

CITRUS COOLER



6 oz lemonade
6 oz orange juice
2 tablespoons lime juice

COLD BREW COFFEE

After brewing coffee, chill in the fridge until cold.



Add cream, sweetener, etc, then sparkle.

CONTENTS

GET TO KNOW YOUR DRINKMATE LUX

Parts and Features.....4

USER INSTRUCTIONS

How to Use.....6

Care and Cleaning8

Tips and Tricks.....9

Troubleshooting.....10

IMPORTANT INFORMATION

Warranty Information.....12

Important Safeguards13

THE FUN BEGINS

Recipes.....14

PARTS AND FEATURES



BEFORE FIRST USE: Hand wash water bottle in warm soapy water; rinse. Stainless Steel Bottle is dishwasher safe, but PET Stainless Bottle and Fizz Infuser are not.

IMPORTANT SAFEGUARDS

Please read below carefully before use.

- 1. DO NOT** store the PET bottle, fizz infuser or CO2 cylinder in a freezer or in a stove/oven or other heat source, such as a heated car.
- 2.** If the CO2 cylinder is colder or warmer than room temperature, it must be gradually brought to room temperature before use.
- 3.** Inspect that the CO2 cylinder and bottle are firmly attached if there is no CO2 injection into the carbonation bottle or you hear CO2 gas leak.
- 4.** Check expiration date on PET bottle. Do not use out of date bottle.
- 5.** Never transport a unit with a CO2 cylinder attached.
- 6. DO NOT** make any modifications or repairs to the unit and accessories. Repairs may be made only by our authorized service personnel.
- 7.** Only use Drinkmate approved accessories, such as bottles and CO2 cylinders (check our website FAQ for latest information)
- 8. WARNING! Food Safety Hazard:**
 - Always use food/beverage-grade CO2.
 - It is user's sole responsibility if using other CO2 sources (e.g., paint-ball, medical grade).
- 9.** Be aware of the foaming rate of the beverage you are carbonating. If the beverage starts generating a lot of foam, slow down your carbonation or pressure release rate and wait for the foam to settle.
- 10. DO NOT** remove Fizz Infuser while bottle contents are pressurized. Always press the blue button to finalize the pressure release process before removing the Fizz Infuser.
- 11.** Always place the unit on a level, stable and water-resistant surface. The unit must always be upright during operation.
- 12. DO NOT** submerge the unit under water and do not clean while in operation.
- 13.** Only use the unit when a filled bottle is inserted. Never attempt to inject CO2 into an empty bottle.
- 14.** Visit www.drinkmate.us or scan the QR code at Page-8 for "Drinkmate how-to" video.
- 15. DO NOT** force the Fizz Infuser in or out its adaptor if the adaptor is not oriented 45 degrees outward. The white injection nozzle on the machine might be damaged if doing so. (Holding the Fizz Infuser by hand and then Tilt the adaptor outward to recede the nozzle, and then slide Fizz Infuser out).
- 16.** Hand wash bottle with soap and warm water. Stainless steel bottle can be cleaned in dishwasher. PET stainless bottle and Fizz Infuser should be hand washed only. Never use hard bristle brushes, abrasives, or chemical cleaners.
- 17. DO NOT** use the PET bottle if it's deformed, scratched, or discolored, or if the expiration date has passed.
- 18. WARNING: Explosion Hazard.** Always store CO2 cylinders in a cool, dry place, away from any type of heat exposure. Exposing to heat can cause cylinder pressure to build up and release CO2 gas unexpectedly. Do not touch cylinder if CO2 is being released; wait until all CO2 is discharged and cylinder has come to room temperature.
- 19. WARNING: Cold-burn Hazard.** Discharging CO2 gas can cause skin to freeze.
- 20.** The PET water bottle storage temperature range is MAX: +40°C/+120°F, MIN: +1°C/+34°F. Never store outside this range. Stainless steel bottle has no temperature range limits.
- 21.** Use the unit to carbonate pulp-free drinks only. Always rinse the Fizz Infuser right after each use of sugary beverages.

WARRANTY INFORMATION

This product is warranted to be free from defects in material and workmanship for a period of two (2) years from the date of original purchase for personal use, or one (1) year from the date of original purchase for commercial use. During this period, your exclusive remedy is repair or replacement of this product or any component found to be defective, at our option. This warranty extends only to the original consumer purchaser or gift recipient. Keep the original sales receipt and original packaging. Proof of purchase is required to make a warranty claim, and Drinkmate is not responsible to provide return packaging.

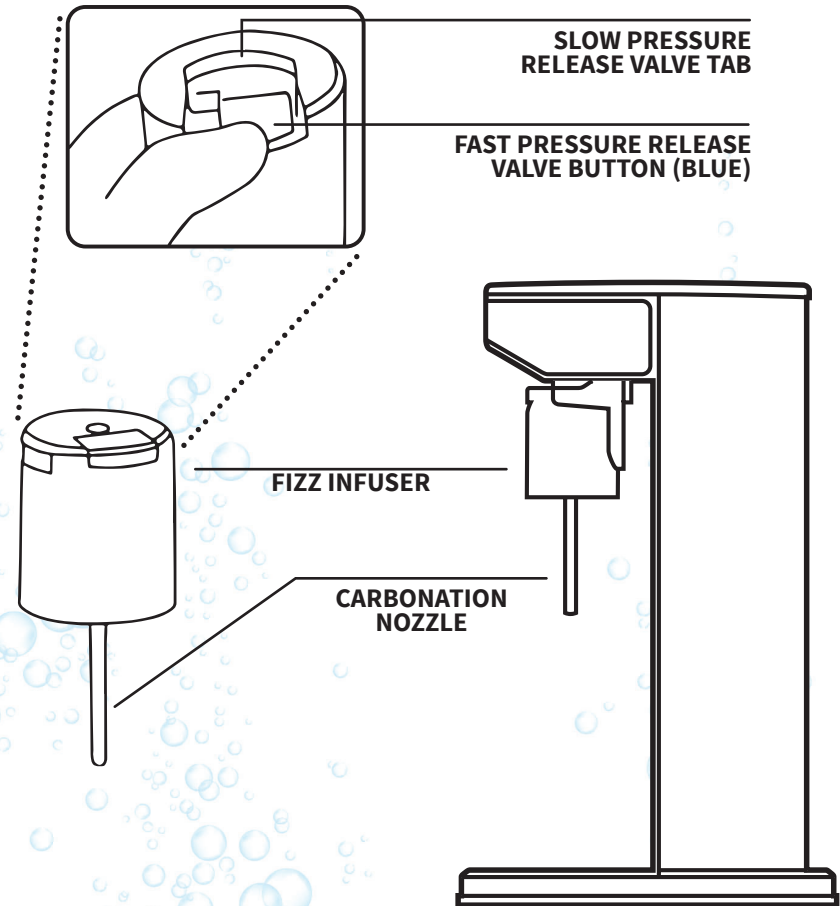
If it is deemed your product is eligible for a warranty claim, Drinkmate will cover shipping costs associated with shipping a replacement/ returning the defective item. This is not applicable for instances such as- but not limited to- ordering the wrong color, size, flavor, or style. If the item is still unopened and in new condition, Drinkmate is willing to make this exchange (within 30 days of purchase), but you are responsible for all costs associated with returning the product to us and our returning a product or component to you. If the product or component is no longer available, we will replace it with a similar one of equal or greater value.

This warranty does not cover PET bottles, used CO2, wear from normal use, use not in conformity with the provided directions, or damage to the product resulting from accident, alteration, abuse, or misuse. We reserve the right to charge a restocking fee for these instances.

This warranty may be voided if the product is used with unauthorized accessories. We exclude all claims for special, incidental, and consequential damages caused by breach of express or implied warranty. All liability is limited to the amount of the purchase price. Every implied warranty, including any statutory warranty or condition of merchantability or fitness for a particular purpose, is disclaimed except to the extent prohibited by law, in which case such warranty or condition is limited to the duration of this written warranty.

This warranty gives you specific legal rights. You may have other legal rights that vary depending on where you live. Some states or provinces do not allow limitations on implied warranties or special, incidental, or consequential damages, so the foregoing limitations may not apply to you. This is the only express warranty for this product and is in lieu of another warranty or condition.

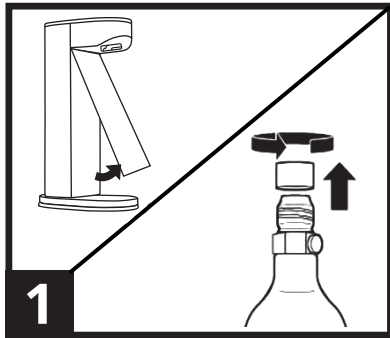
TO MAKE A WARRANTY CLAIM, contact Drinkmate directly:
sales@idrinkproducts.com
Toll-free phone number (US, CA, UK): 1-844-812-6241



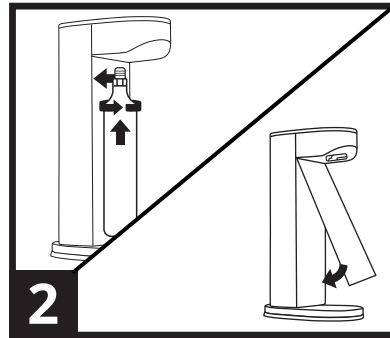
HOW TO USE



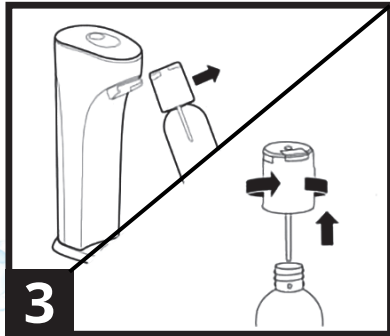
NOTE: Only use specified CO2 cylinders, and Drinkmate bottles. Never carbonate if drink bottle is empty or not completely attached.



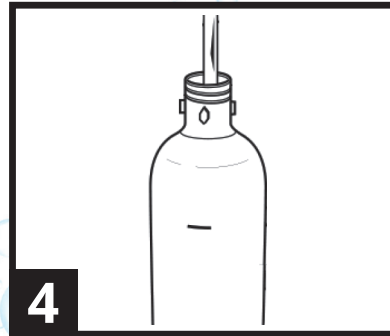
1 With bottle and fizz infuser removed, pull off black panel from the bottom. Then remove seal and twist off cap on CO2 cylinder.



2 To install CO2 cylinder, insert threaded part of cylinder into unit receptacle and hand-tighten. Snap front panel back into place.



3 Remove Fizz Infuser and bottle assembly by pulling assembly forward 45 degrees and then sliding it off the countertop unit. Remove Fizz Infuser from bottle by rotating it counter-clockwise and then pulling it up.



4 Fill carbonation bottle with beverage you intend to carbonate. Do not fill over the maximum fill line.

Only use pulp-less beverages.

WARNING! Pulped beverages may clog the pressure release valve.

PROBLEM

It's difficult to remove the bottle from the Fizz Infuser after carbonating.

Foam rises too quickly while carbonating or releasing pressure

PROBABLE CAUSE/SOLUTION

- Excess CO2 has not been released. Lift the pressure release tab on the Fizz Infuser and wait until all the excess CO2 has been released. Always push the blue fast release button to empty the pressure.
- Use shorter carbonation bursts. Every beverage will foam differently. If foam is coming out when you are releasing pressure through the slow release valve, next time you carbonate that beverage: (i) pour less beverage to leave more room for foam to rise up; (ii) use shorter bursts; (iii) wait longer between each carbonation press.
- For drinks with alcohol or high sugar content, fill the bottle halfway and use short CO2 bursts.
- This is a machine that allows you to use your own imagination to design your own sparkling beverages and learn to make beverages to your liking. The more you make drinks you'll learn how to best carbonate your favorite drinks.



Note: For Drinkmate "How-to-use" information, please scan this QR code for the video, or visit our website www.drinkmate.us

TROUBLESHOOTING

PROBLEM

PROBABLE CAUSE/SOLUTION

Cannot attach bottle to machine/ Fizz Infuser is blocked by a white tip

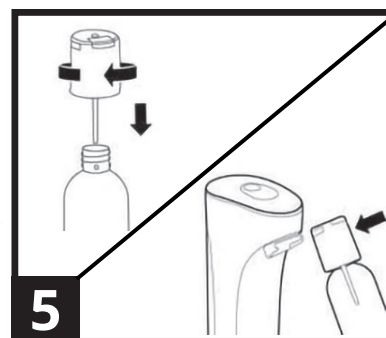
- Put your fingers behind the Fizz Infuser Adapter (half-moon shape), and pull it forward to about 45 degree angle from vertical position. Or refer to FAQs at www.drinkmate.us

No Carbonation

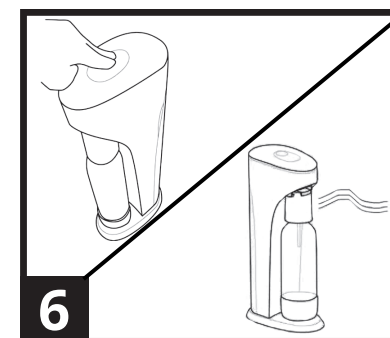
- Check if CO2 cylinder is empty. Use a brand new cylinder.
- Cylinder is too cold. Wait until cylinder reaches room temperature.
- Beverage is too warm. Use a very cold beverage or add ice to cool it down.
- Check to see if CO2 cylinder is properly installed into the receptacle. Hand tighten it again.

Slight Carbonation

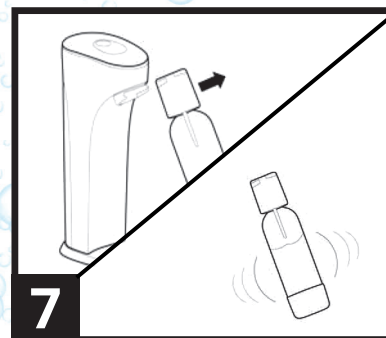
- CO2 is not mixed well with drink. Wait 10 seconds after carbonating to complete mixing before releasing pressure.
- CO2 cylinder is close to empty. Change the CO2 cylinder (shake it may help a little bit).
- Carbonator is too cool. Wait until the cylinder reaches room temperature.
- Beverage is too warm. Use 33°-42°F (0.5°-5.5°C) very cold beverage.
- Beverage is too sugary. Sugar molecules tend to absorb more CO2 around so it feels less carbonated than water only.
- Press on the carbonation button for a longer period of time.



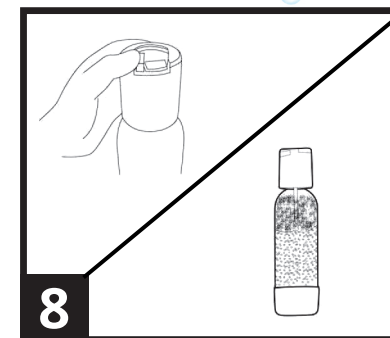
Attach Fizz Infuser to bottle by screwing it clockwise and (i) slide Fizz Infuser **fully** into countertop adapter, then (ii) **gently** tilt Fizz Infuser to straight vertical position.



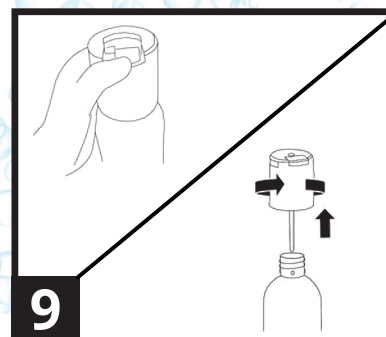
For high foaming beverages, fill the bottle halfway and carbonate using short bursts (~0.25 sec.). For low foaming beverages, fill up to max fill line and use longer bursts. Stop carbonating when a discharge sound is heard.



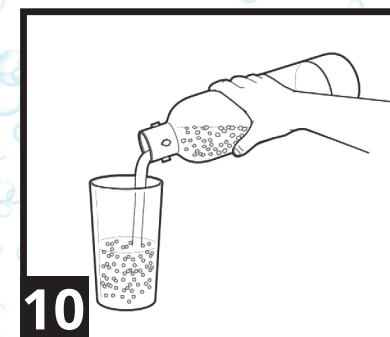
Gently pull Fizz Infuser and Bottle Assembly forward 45 degrees, then slide it off of the machine. Swirl or shake the bottle and Fizz Infuser assembly to increase carbonation level.



Open the slow release valve on the fizz infuser and pay attention to foam levels as pressure releases. If the foam reaches the top of the bottle close the slow release valve and wait for foam to settle before opening again. If the foam reaches the top too quickly, pouring less beverage next time.

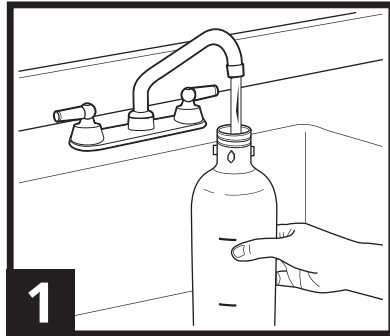


If the slow release valve is open and the sound of air coming out stops, press the blue fast release button to make sure pressure is fully released. Remove Fizz Infuser by unscrewing it counter-clockwise.

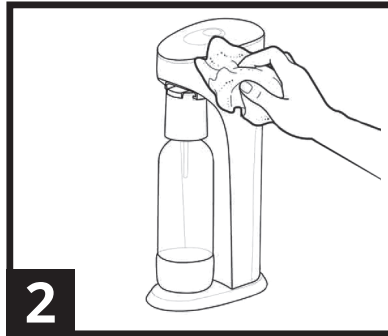


Pour yourself a refreshing carbonated beverage. Take care not to pour too quickly, some beverages will foam much more than others. Learn from experimentation and enjoy your drinks.

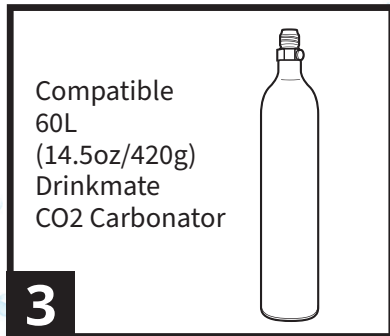
CARE AND CLEANING



1 Rinse bottle with clean water after each use. PET Stainless bottle bottom cap can also be removed (by twisting) for cleaning underneath it.

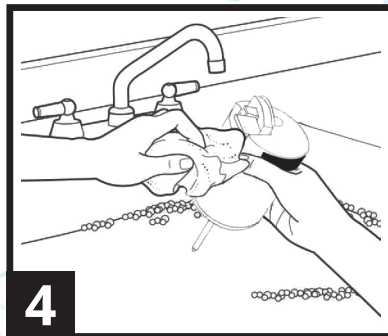


2 To clean the carbonating unit, wipe with a damp cloth. Do not immerse unit in water. Do not use any solvents or abrasive cleaners, since this could damage the surface.



Compatible
60L
(14.5oz/420g)
Drinkmate
CO2 Carbonator

3 Empty CO2 cylinder can be exchanged for a full cylinder at any participating Drinkmate retailers or online for the cost of gas refill only. Drinkmate accepts all standard Threaded (not Quick Connect type) 60L cylinders on the market.



4 Make sure to wash Fizz Infuser after every use under running water. The Fizz Infuser allows you to carbonate non-water based beverages because it can both slowly relieve pressure and can be easily cleaned. This is especially important if foam came out of the valve during use.

DID YOU KNOW? One 60L cylinder of Drinkmate CO2 saves roughly 169 cans and bottles? Drinkmate can help you save the earth one bottle and can at a time while you sparkle everything with our fizz infuser technology!



TIPS AND TRICKS

TIP! Use the coldest beverages possible, 33° - 42°F (0.5° - 5.5°C)

TIP! Keep at least three 60L CO2 cylinders on hand so you will not run out of CO2.



TIP! Send back empty cylinders for a coupon to use towards your next purchase! Our exchange process can be done online in a few short steps, without having to drive to the store to get your CO2 refilled.

Drinkmate's convenient online exchange program can be found by the following QR codes:

For USA
Continental

For Canada

For UK

Visit www.drinkmate.us for more tips and recipes.