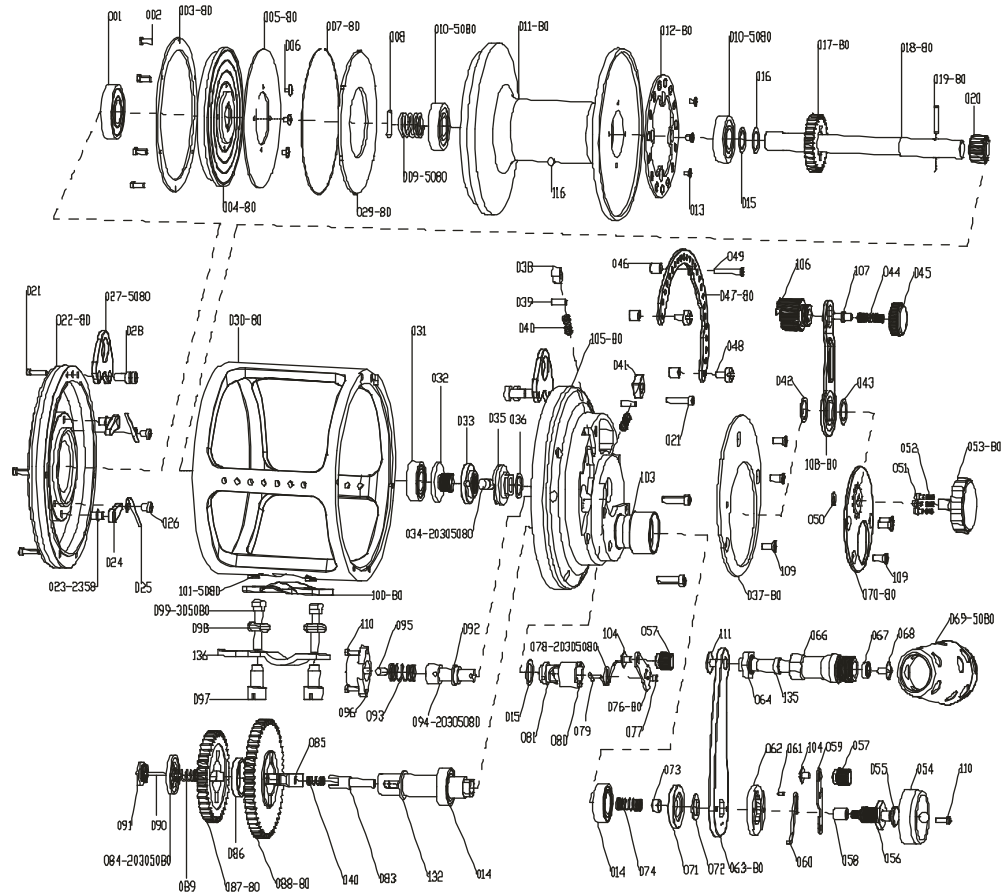


GOMEXUS HX



Part NO.	Part Name	Part NO.	Part Name	Part NO.	Part Name	Part NO.	Part Name
SS-001	Left Plate Ball Bearing	AL-030	Frame Housing	SS-059	Slide Plate	SS-088	Drive Gear (Fast)
SS-002	Cooling Shield Screws	SS-031	Right Plate Ball Bearing	SS-060	Slide Plate Spring	SS-089	Shaft Insert Spring
AL-003	Cooling Shield	BR-032	Pre-Program Screws	SS-061	Push Button Pin	SS-090	Shaft Insert Screw
AL-004	Pressure Plate	BR-033	Pre-Program Key	AL-062	Button Plate	BR-091	Drive Shaft (Slim)
GB-005	Drag Carbon Washer	SS-034	Pre-Program Pin	BR-063	Handle	PS-092	Alert Slide Washer
SS-006	Drag Washer Screws	BR-035	Lever Shaft Body	SS-064	T-knob Pin	SS-093	Alert Spring
SS-007	Alert Washer	SS-036	Lever Shaft Washer	SS-065	T-knob Pin Washer	SS-094	Alert Plunger
SS-008	Pressure Spring Pin	SS-037	Lever Quadrant	SS-066	T-knob Pin Tube	SS-095	Alert Plunger Pin
SS-009	Pressure Spring	SS-038	Spool Detent	SS-067	Knob Ball Bearing A	PS-096	Alert Socket
SS-010	Spool Ball Bearing	SS-039	Spool Detent Pin	SS-068	Knob Ball Bearing Screw	BR-097	Stand Seat Screws
AL-011	Machined Cut Spool	SS-040	Spool Detent Spring	AL-069	Perfect Knob	BR-098	Stand Seat Nut
SS-012	Alert Ratchet	SS-041	Strike Stop	SS-070	Knob Ball Bearing B	BR-099	Stand Seat Screws
SS-013	Alert Ratchet Screws	TF-042	Lever Thrust Ring A	SS-071	BB Pressure Cover	SS-100	Stand Seat Plate
SS-014	Handle Ball Bearing	PS-043	Lever Thrust Ring B	SS-072	Ball Bearing Washer	SS-101	Stand Seat Washer
SS-015	Spool Washer A	SS-044	Sound Pin Spring	SS-073	Speed Drive Shield	SS-102	Wrench
SS-016	Spool Washer B	BR-045	Pin Cap	SS-074	Speed Spring	SS-103	Ball Bearing Cushion
SS-017	Spool Drive Gear (Slow)	SS-046	Locator Shaft	BR-075	Strike Alert Lever Nut	SS-104	Strick Alert lever Screw
SS-018	Main Shaft	SS-047	Locator	SS-076	Strike Alert Lever	AL-105	Right Side Plate Cover
SS-019	Cross Pin	BR-048	Locator Screw A	SS-077	Strike Alert Lever Pin	BR-106	Drag Control Sound Nut
SS-020	Spool Drive Gear (Fast)	SS-049	Locator Screw B	SS-078	Cross Pin Spring	SS-107	Drag Control Sound Pin
SS-021	Metal Plate Screws	SS-050	E-shape Lock	SS-079	Alert Ratchet Pin	SS-108	Drag Control Lever
SS-022	Left Side Plate Cover	SS-051	Dial Click Shoe	PS-080	Alert Pin Out Support	SS-109	Cover Screws
SS-023	Set Plate Pin	SS-052	Friction Shoe Spring	BR-081	Alert Pin Inside Support	SS-110	Alert Socket Screws
SS-024	Clicker Pawl	SS-053	Pre-Program Dial	SS-082	Drive Shaft Holder	SS-111	Screws
SS-025	Spring	AL-054	Button Shield	BR-083	Bar Stop	SS-112	Spare Parts
SS-026	Spring Screws	SS-055	Push Button Shaft	BR-084	Friction Washer	SS-113	Washer
SS-027	Harness Lugs	SS-056	Push Button Out Nut	BR-085	Gear Cross Bar	SS-114	Spool Washer
SS-028	Harness Lugs Screws	BR-057	Push Button Cap	PS-086	Friction Washer	SS-115	Pre-Load Spring
SS-029	Drag Plate	BR-058	Push Button Inside Nut	SS-087	Drive Gear (Slow)	SS-116	Spool Line Pin

REMARKS: This product should be tested and repaired by professional, but any of the other customer people is forbidden to take apart of the parts.

SS-stainless steel material, TF-teflon material, BR-brass, AL-aircraft aluminum, GB-carbon fiber, PS-hard plastic.