

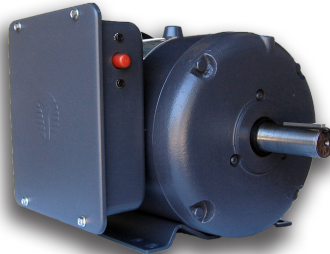
**HP:** 1/3–10  
**Pole:** 4

**Frame:** 56–215T  
**Volt:** 115/208–230 (<145T)  
208–230 (>182T)

**RPM:** 1800 (60 Hz)  
**Body:** T/TC/RND



**56-145T**



**182T-215T**



**AUGER (56Y)**

## STANDARD FEATURES

- Manual Reset Protectors
- High Efficiency Dual Cap Design
- High Quality Molded Gaskets
- Over 300% Starting Torque

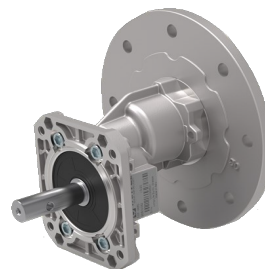
- Cast Iron End Bells
- Dual Oversized Ball Bearings
- Dependable Mechanical Starting Switch
- 18 Month Warranty



HP	Sync Speed	Model Number Rigid Base	List Price	Model Number C-Face with Base	List Price	Model Number C-Face with Round Body	List Price
1/3	1800	RD1-RS-TF-56-4-B-C-.33	\$285	RD1-RS-TF-56C-4-B-C-.33	\$299	RD1-RS-TF-56C-4-B-C-.33-RND	\$292
1/2	1800	RD1-RS-TF-56-4-B-C-.5	\$315	RD1-RS-TF-56C-4-B-C-.5	\$330	RD1-RS-TF-56C-4-B-C-.5-RND	\$320
3/4	1800	RD1-RS-TF-56-4-B-C-.75	\$348	RD1-RS-TF-56C-4-B-C-.75	\$360	RD1-RS-TF-56C-4-B-C-.75-RND	\$358
1	1800	RD1-RS-TF-56H-4-B-C-1	\$436	RD1-RS-TF-56HC-4-B-C-1	\$461	RD1-RS-TF-56HC-4-B-C-1-RND	\$454
	1800	RD1-RS-TF-143T-4-B-C-1	\$448	RD1-RS-TF-143TC-4-B-C-1	\$463	RD1-RS-TF-143TC-4-B-C-1-RND	N/A
1.5	1800	RD1-RS-TF-56H-4-B-C-1.5	\$479	RD1-RS-TF-56HC-4-B-C-1.5	\$507	RD1-RS-TF-56HC-4-B-C-1.5-RND	\$483
	1800	RD1-RS-TF-145T-4-B-C-1.5	\$489	RD1-RS-TF-145TC-4-B-C-1.5	\$515	RD1-RS-TF-145TC-4-B-C-1.5-RND	N/A
2	1800	RD1-RS-TF-56H-4-B-C-2	\$534	RD1-RS-TF-56HC-4-B-C-2	\$590	RD1-RS-TF-56HC-4-B-C-2-RND	\$542
	1800	RD1-RS-TF-145T-4-B-C-2	\$543	RD1-RS-TF-145TC-4-B-C-2	\$599	RD1-RS-TF-145TC-4-B-C-2-RND	N/A
3	1800	RD1-RS-TF-182T-4-B-B-3	\$796	RD1-RS-TF-182TC-4-B-B-3	\$834	RD1-RS-TF-182TC-4-B-B-3-RND	N/A
5	1800	RD1-RS-TF-184T-4-B-B-5	\$958	RD1-RS-TF-184TC-4-B-B-5	\$973	RD1-RS-TF-184TC-4-B-B-5-RND	N/A
7.5	1800	RD1-RS-TF-213TZ-4-B-B-7.5	\$1,463	RD1-RS-TF-213TCZ-4-B-B-7.5	\$1,512	RD1-RS-TF-213TCZ-4-B-B-7.5-RND	N/A
10	1800	RD1-RS-TF-215T-4-B-B-10	\$1,743	RD1-RS-TF-215TC-4-B-B-10	\$1,789	RD1-RS-TF-215TC-4-B-B-10-RND	N/A

## AUGER MOTORS

HP	Sync RPM	Model Number	Price
1/2	1800	RD1-RS-TF-56Y-4-B-C-.5	\$348
3/4	1800	RD1-RS-TF-56Y-4-B-C-.75	\$392
1	1800	RD1-RS-TF-56Y-4-B-C-1	\$478



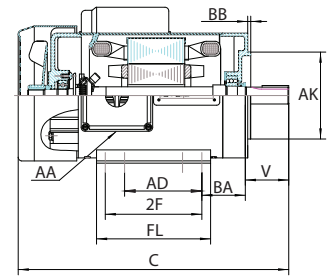
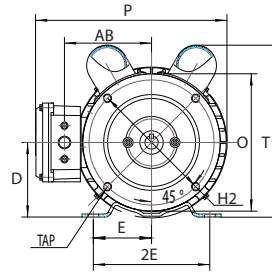
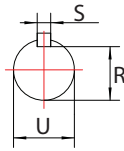
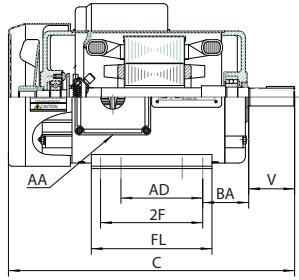
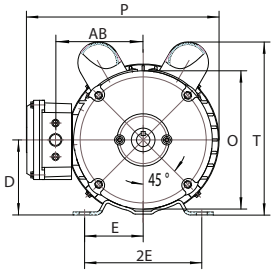
Contact Techtop to replace your unreliable inefficient auger gearboxes with high efficiency Helical units

Continued on back

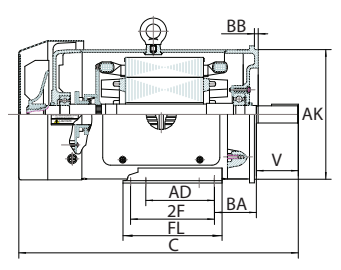
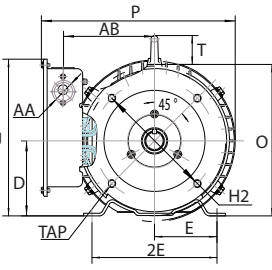
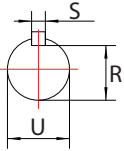
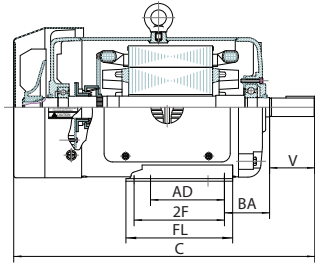
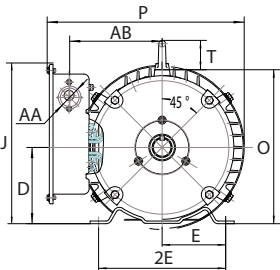
**RIGID**

**SHAFT**

**C - FACE**



FRAME	AA	AB	AD	AK	BA	BB	C	D	E	2E	FL	2F	O	P	R	S	T	U	V	TAP	H2
56 (1/3 HP)	0.88	3.7	2.65	---	2.25	---	10.7	3.5	2.44	4.88	4	3	5.67	8.3	0.517	0.188	7.7	0.625	1.88	---	---
56C (1/3 HP)				4.5		0.16														3/8-16	5.875
56				---		---														---	---
56C				4.5		0.16														3/8-16	5.875
143/145T	4.1	4	4	---	0.16	---	14.1	2.75	5.5	5.9	5	6.5	9.1	0.771	8.1	0.875	2.25	---	---	3/8-16	5.875
143/145TC				4.5		---															



FRAME	AA	AB	AD	AK	BA	BB	C	D	E	2E	FL	2F	J	O	P	R	S	T	U	V	TAP	H2																	
182T	1.13	5.5	4.5	---	2.75	---	16.95	4.5	3.75	7.5	6.5	5.5	9.45	9.1	11.65	0.986	0.25	1.75	1.125	2.75	---	---																	
182TC				8.5		0.25															1/2-13	7.25																	
184T				---		---															---	---																	
184TC				8.5		0.25															1/2-13	7.25																	
213TZ*				---		---															---	---																	
213TCZ*				8.5		0.25															1/2-13	7.25																	
215T				6.2		5.5															5.5	---	3.5	---	20	5.25	4.25	8.5	8.5	7	10.1	10.6	13.3	1.201	0.312	1.375	3.38	---	---
215TC																						8.5		0.25														1/2-13	7.25

\* 213TZ MOTOR INCLUDES SHAFT ADAPTER TO 215T SHAFT SIZE

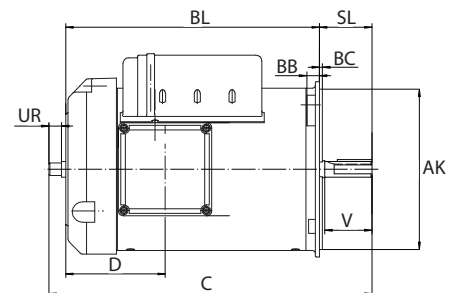
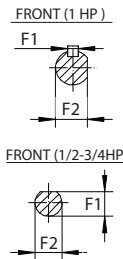
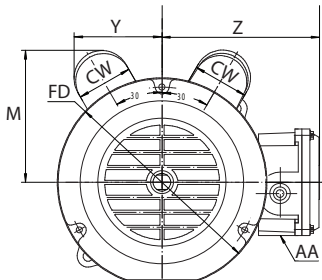
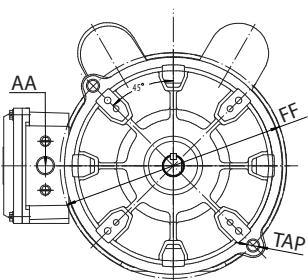
**FRONT**

**REAR**

**SHAFT**

**SIDE**

**AUGER MOTORS**



HP	AA	AK	BB	BC	BL	C	CW	D	FF	FD	F1	F2	M	SL	UR	V	Y	Z	TAP	PRICE	
0.5	0.875	6.375	0.52	0.12	8.51	11.2	1.93	3.95	7.25	7.3	0.45	0.5	5.3	2.02	0.5	1.875	3.1	5.53	0.36	\$348	
0.75					10.11	12.8							4.6							2.09	\$376
1.0					12.87	0.175							0.57							2.09	\$406