

XD 60, XD 70, and XD 80 Power Rewind Hose Guide Kits

332703A

EN

Used to accessorize XD 60, XD 70 and XD 80 Power Rewind hose reel with stainless steel or roller hose guides. For professional use only.

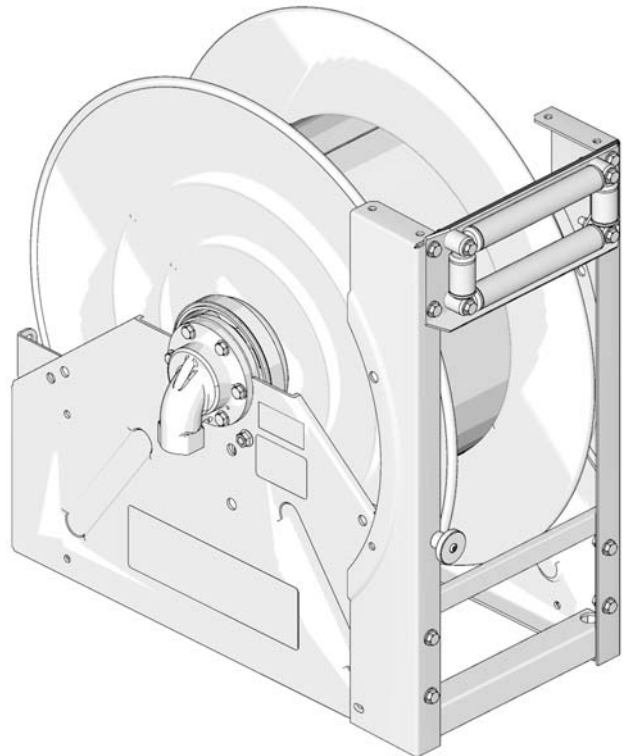
Part No.:

| Part No. | Description |
|----------|---------------------------------------|
| 24T327 | KIT, SST Fairlead, XD 60 |
| 24T328 | KIT, SST Fairlead, XD 70 |
| 24T329 | KIT, SST Fairlead, XD 80 |
| 24R072 | KIT, Roller Guide with Bracket, XD 60 |
| 24T330 | KIT, Roller Guide with Bracket, XD 70 |
| 24T331 | KIT, Roller Guide with Bracket, XD 80 |
| 24T332 | KIT, Arms, XD 60 with SST Guide |
| 24T333 | KIT, Arms, XD 70 with SST Guide |
| 24T334 | KIT, Arms, XD 80 with SST Guide |
| 24T335 | KIT, Arms, XD 60 with Roller Guide |
| 24T336 | KIT, Arms, XD 70 with Roller Guide |
| 24T337 | KIT, Arms, XD 80 with Roller Guide |



Important Safety Instructions

Read all warnings and instructions in this manual and the XD 60, XD 70 and XD 80 Power Rewind Hose Reel Installation and Operation Instruction manual. Save all instructions.



Hose Guide Without Support Arm Installation

Kits 24T327, 24T328, 24T329, 24R072, 24T330, 24T331

NOTE: Hose reels are shipped with wear plates bolted on each side of the reel mounting base.

To install the hose guide:

1. Disconnect power to hose reel.
2. Remove screws (a), nuts (b) and wear plate (c) from reel frame. Discard these parts, you will not need them for reassembly (FIG. 4).

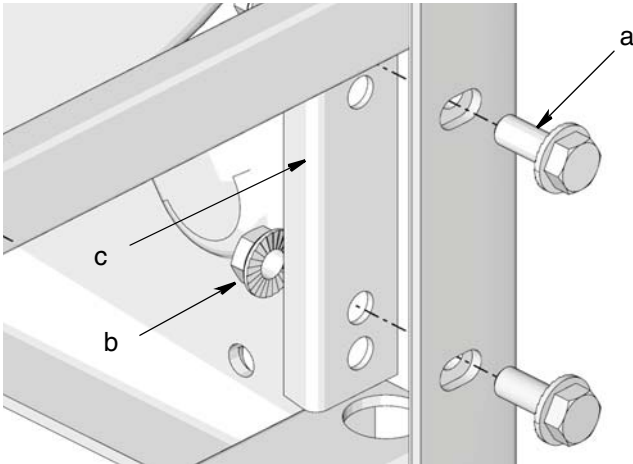


FIG. 1

3. Align fairlead (3) (FIG. 2: models 24T327, 24T328, 24T329; FIG. 3: models 24R072, 24T330, 24T331) with front of hose reel frame.
4. Secure fairlead (3) to front of hose reel using nuts (4) (not shown) and screws (5) provided (FIG. 2 and FIG. 3). Torque to 25-35 ft lbs. (33.9 - 47.5 N.m).

Kits: 24T327, 24T328, 24T329: Stainless Steel Hose Guide

| Ref. | Description | Qty |
|------|-----------------------------|-----|
| 3 | FAIRLEAD, reel, w/o rollers | 1 |
| 4 | NUT, hex, flange head | 4 |
| 5 | SCREW, cap, flange head | 4 |

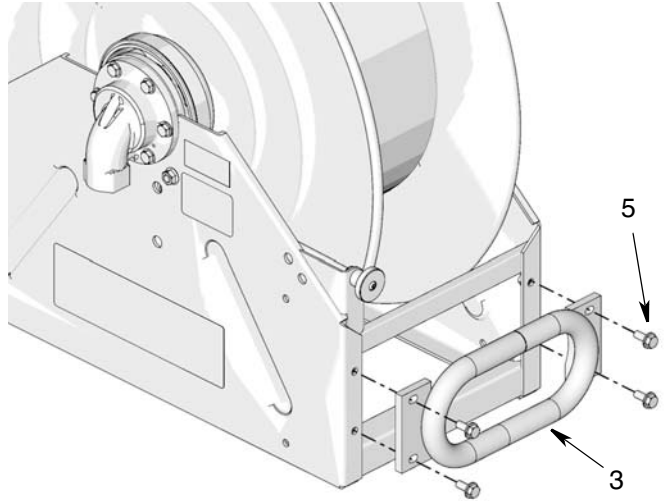


FIG. 2

Kits: 24R072, 24T330, 24T331: Roller Hose Guide

| Ref. | Description | Qty |
|------|------------------------------|-----|
| 3 | FAIRLEAD, reel, with rollers | 1 |
| 4 | NUT, hex, flange head | 4 |
| 5 | SCREW, cap, flange head | 4 |

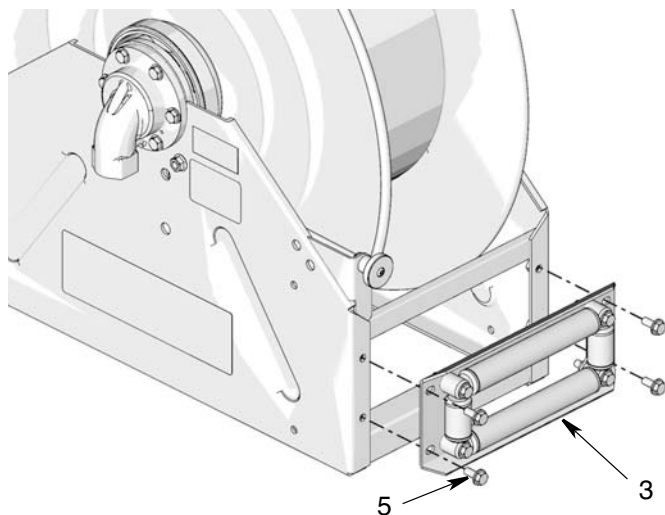


FIG. 3

Hose Guide with Support Arm Installation

NOTE: Hose reels are shipped with wear plates bolted on each side of the reel mounting base.

To install the roller support arms:

1. Disconnect power to hose reel.
2. Remove screws (a), nuts (b) and wear plate (c) from reel frame. Discard these parts, you will not need them for reassembly (FIG. 4).

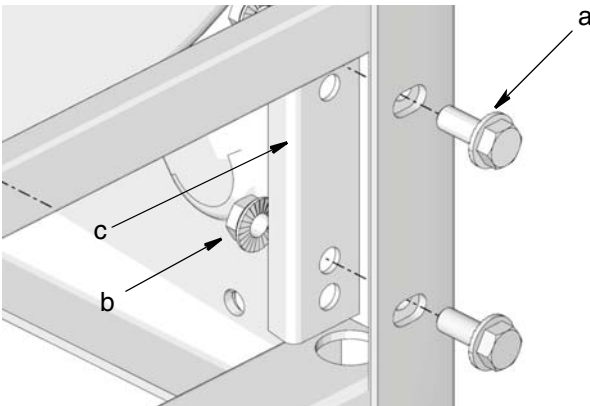


FIG. 4

3. Remove brake knob screw (d) and brake knob (e) and washer (f). Set these parts aside to use for reassembly (FIG. 5).

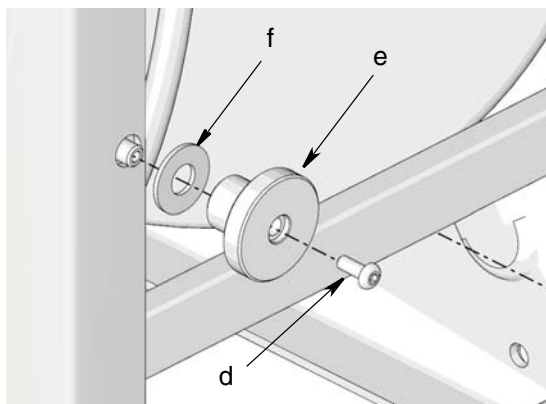


FIG. 5

4. Turn brake rod (g) (FIG. 6) to extend the end out of the reel frame. This is necessary to accommodate the added frame width after the bracket is installed.
5. Align support roller arm (1) over end of the brake rod (g) and hose reel frame as shown in FIG. 6.

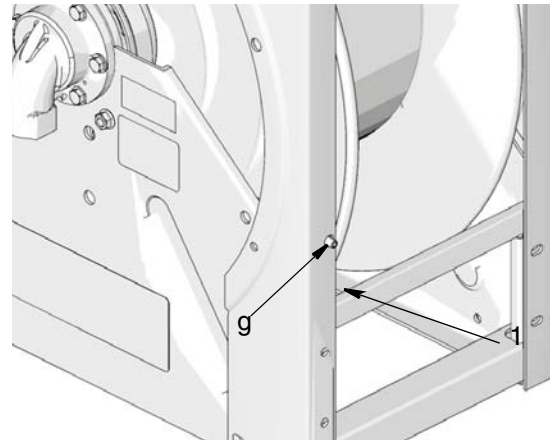


FIG. 6

6. Install washer (f), brake knob (e) and brake knob screw (d) (FIG. 7, page 3).

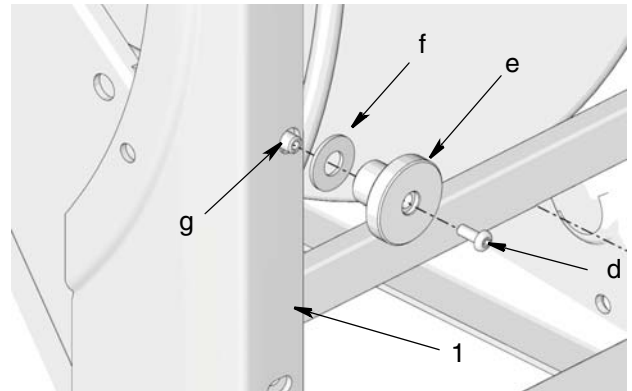


FIG. 7

NOTE:

- For Steps 7 - 9 refer to FIG. 8 (page 4) or FIG. 9 (page 5) for installation details.
- The fairlead without rollers (Kits 24T332, 24T333, 24T334) is shown in FIG. 8. The fairlead with rollers (kits 24T335, 24T336, 24T337) is shown in FIG. 9.

7. Secure bracket (1) to hose reel base (a) using screws (5), nuts (4) and washers (6). (Washers are included in XD 60 and XD 70 model's kits only. The XD 80 model does not use washers.)
8. Secure bracket (2) to hose reel base (a) using screws (5), nuts (4) and washers (6).
9. Install the roller fairlead (3) to the roller support arms using screws (5) and nuts (4).
10. Reroute the hose through the reel fairlead (3).

24T332, 24T333, 24T334: Stainless Steel Hose Guide With Support Arms

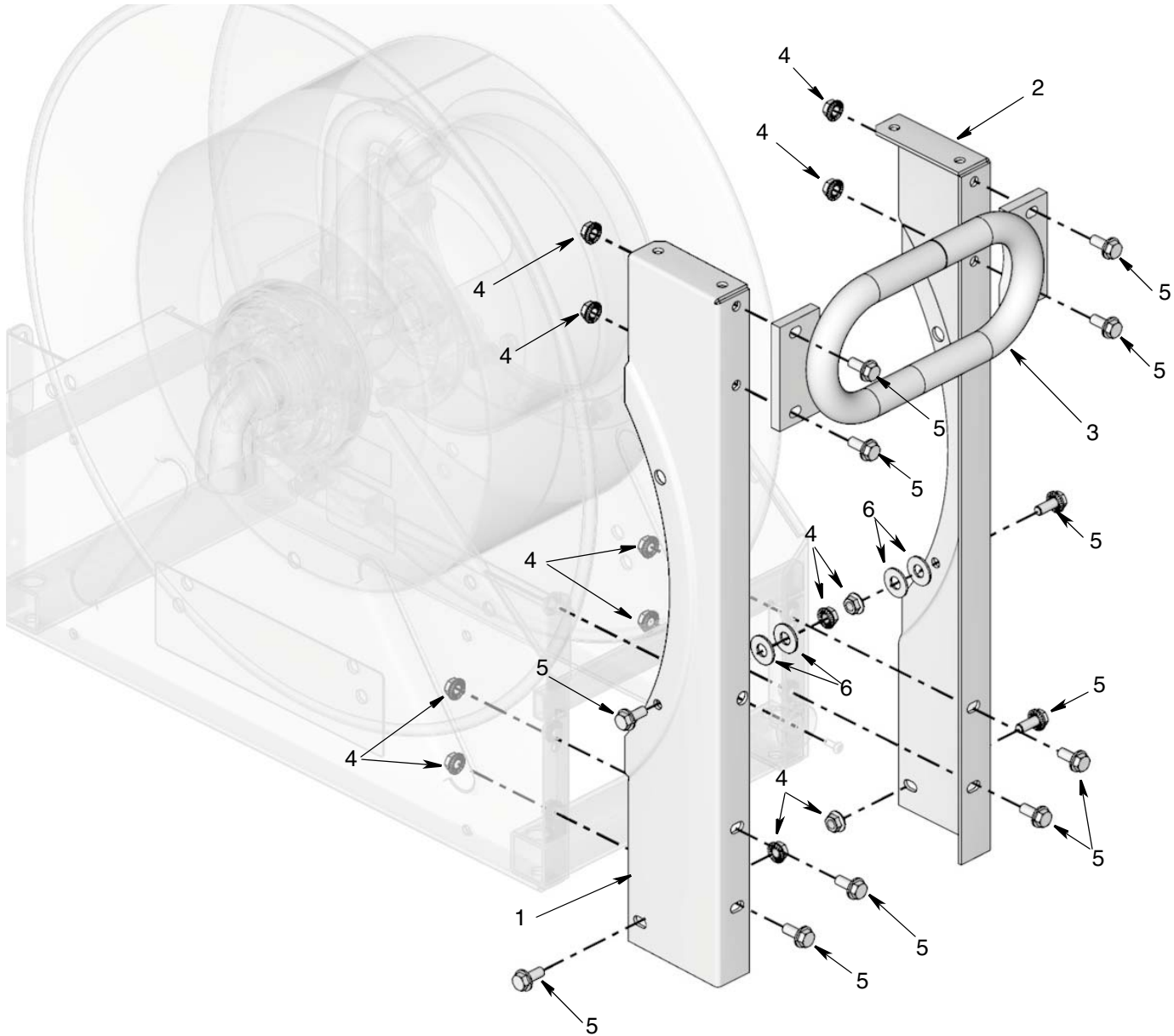


FIG. 8

| Ref. | Description | Qty |
|------|--|-----|
| 1 | SUPPORT, roller arm | 1 |
| 2 | SUPPORT, roller arm | 1 |
| 3 | FAIRLEAD, reel, w/o rollers | 1 |
| 4 | NUT, hex, flange head | 12 |
| 5 | SCREW, cap, flange head | 12 |
| 6 | WASHERS, plain (kits 24T332 and 24T333 only) | 4 |

24T335, 24T336, 24T337: Roller Hose Guide With Support Arms

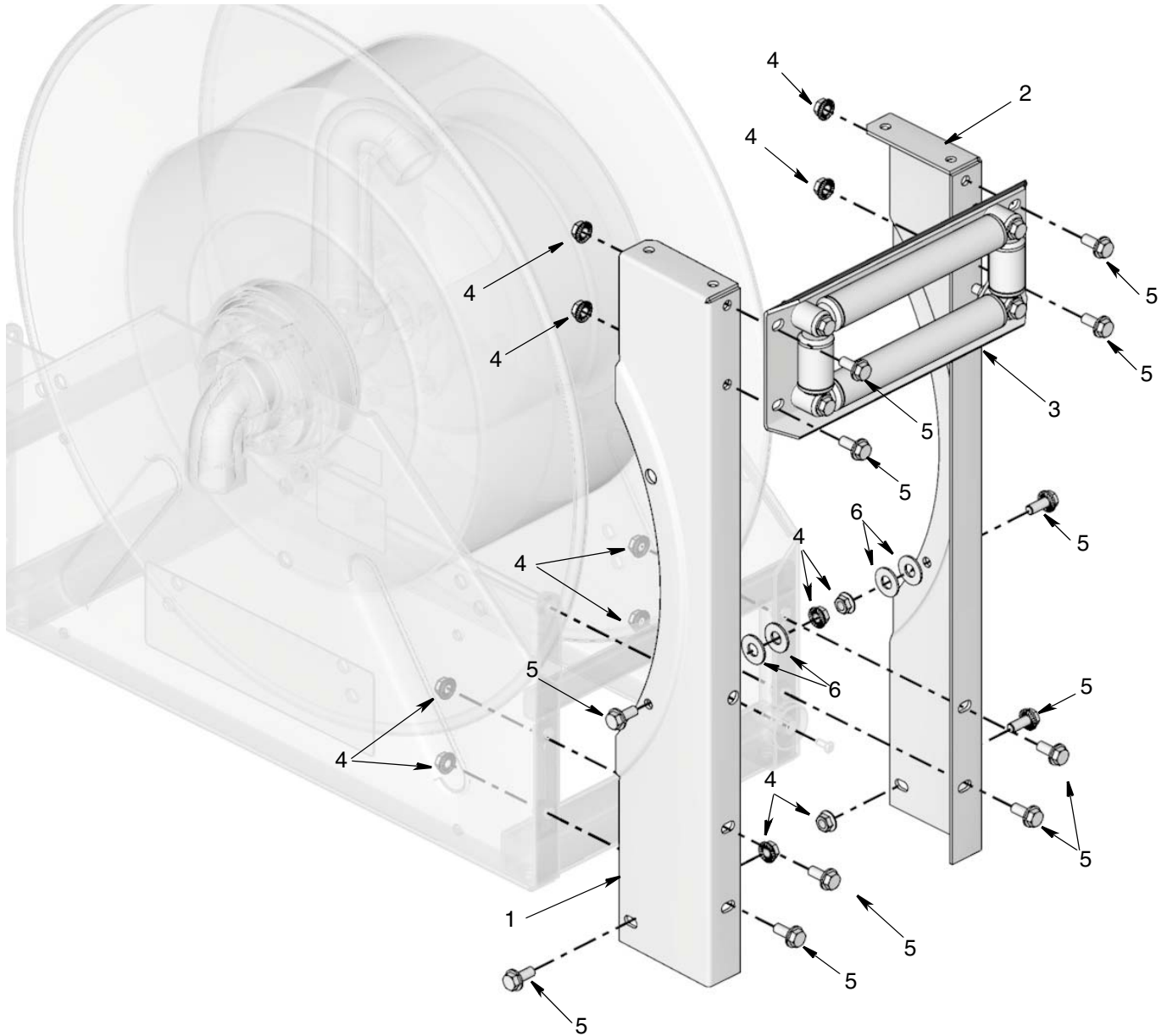


FIG. 9

| Ref. | Description | Qty |
|------|--|-----|
| 1 | SUPPORT, roller arm | 1 |
| 2 | SUPPORT, roller arm | 1 |
| 3 | FAIRLEAD, reel, with rollers | 1 |
| 4 | NUT, hex, flange head | 12 |
| 5 | SCREW, cap, flange head | 12 |
| 6 | WASHERS, plain (kits 24T332 and 24T333 only) | 4 |

*All written and visual data contained in this document reflects the latest product information available at the time of publication.
Graco reserves the right to make changes at any time without notice.*

For patent information, see www.graco.com/patents.

Original instructions. This manual contains English. MM 332703

Graco Headquarters: Minneapolis

International Offices: Belgium, China, Japan, Korea

GRACO INC. AND SUBSIDIARIES • P.O. BOX 1441 • MINNEAPOLIS MN 55440-1441 • USA

Copyright 2013, Graco Inc. All Graco manufacturing locations are registered to ISO 9001.

www.graco.com
September 2013