

## SaniSpray HP™ 750 Sprayer

3A7939A

EN



***For portable spraying of water-based disinfectants approved for spray application only. Not for applying paints, stains, or other types of coatings. Not approved for use in explosive atmospheres or hazardous (classified) locations. For professional use only.***

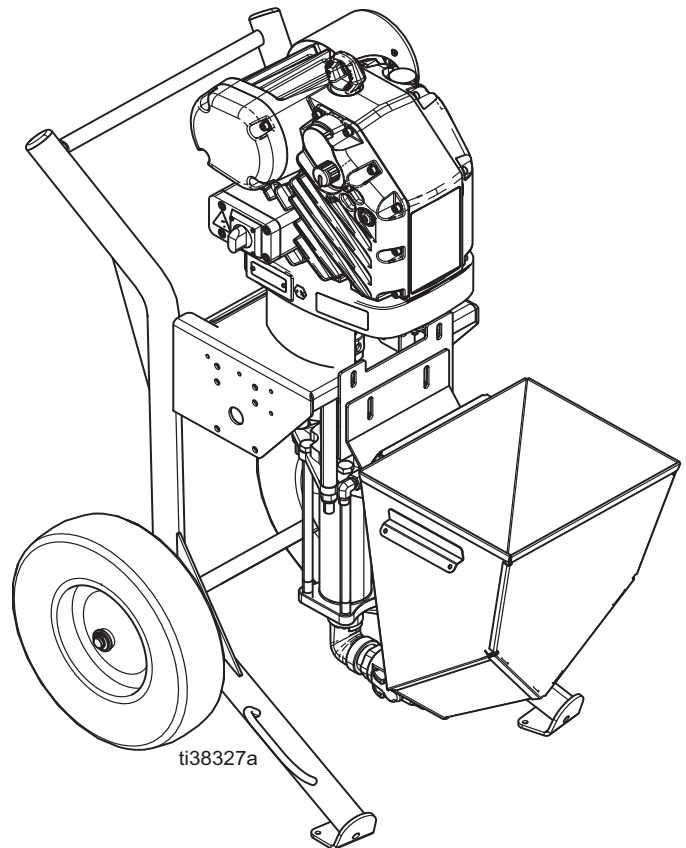
See page 2 for Model information and Maximum Disinfectant Working Pressure.



### Important Safety Instructions

Read all warnings and instructions in this manual, in related manuals, and on the unit before using the equipment. Be familiar with the controls and the proper usage of the equipment. Save these instructions.

 <b>WARNING</b>	
	<b>CHEMICAL HAZARD</b> <b>To prevent serious injury:</b> <ul style="list-style-type: none"><li>• Follow all directions and requirements on disinfectant label. It is a violation of federal law to use an EPA-approved disinfectant in a manner inconsistent with its labeling.</li><li>• Flush after each use. Never store disinfectant in equipment.</li><li>• Use only with appropriate personal protective equipment.</li></ul>
	
	
	



# Contents

<b>Important User Information</b> .....	<b>3</b>	<b>Spray</b> .....	<b>18</b>
<b>Warnings</b> .....	<b>4</b>	Clear Tip Clog .....	19
<b>Component Identification</b> .....	<b>7</b>	Flushing and Cleaning .....	20
<b>Installation</b> .....	<b>8</b>	Clean the Guns .....	21
Grounding .....	8	Shutdown / Storage .....	22
Connect Power .....	9	<b>Maintenance</b> .....	<b>23</b>
Extension Cords .....	9	Preventative Maintenance Schedule .....	23
Install Vented Oil Cap Before Using Equipment .....	9	Daily Maintenance .....	24
<b>Setup</b> .....	<b>10</b>	Cart Maintenance .....	24
Flush Before Using the Sprayer .....	10	<b>Troubleshooting</b> .....	<b>25</b>
Disinfectant Supply Options .....	11	Error Code Troubleshooting .....	27
Remove the Hopper .....	11	<b>Repair</b> .....	<b>29</b>
Connect the Suction Tube .....	11	Disconnect the Pump .....	29
Connect the Hopper .....	11	Reconnect the Pump .....	30
Gun and Hose Setup Options .....	12	Replace the Rupture Disc Assembly .....	31
Connect Hose(s) and Gun(s) .....	12	<b>Parts</b> .....	<b>32</b>
Trigger Lock .....	15	Sprayer (273215) Parts .....	32
Pressure Relief Procedure .....	15	4-Gun Manifold (273226) Parts .....	34
Prime the Sprayer .....	16	<b>Dimensions</b> .....	<b>36</b>
Choose Your Spray Tip .....	17	<b>Technical Specifications</b> .....	<b>37</b>
		<b>Recycling and Disposal</b> .....	<b>37</b>
		End of Product Life .....	37
		California Proposition 65 .....	37
		<b>Graco Warranty</b> .....	<b>38</b>

## Related Manuals

Manuals are available at [www.graco.com](http://www.graco.com).

Component manuals in English:

Part	Description
3A7940	SaniSpray Motor - Operation, Repair, and Parts Manual
3A7690	SaniSpray HP™ Gun - Operation Manual
3A7945	Pump - Repair and Parts Manual

## Models

Model	Description	Maximum Working Pressure
273215	SaniSpray HP 750 Sprayer	1150 psi (79 bar, 7.9 MPa)
273216	SaniSpray HP 750 Sprayer (includes 4-Gun Kit 273226, Qty 1)	
273217	SaniSpray HP 750 Sprayer (includes 4-Gun Kit 273226, Qty 2)	

## Important User Information



Before using your disinfectant sprayer, read this manual for complete instructions on proper use and safety warnings.



The sprayer is designed to spray disinfectants that are water-based and clean up with water.



You must also read and follow the information on the disinfectant container label and ask for a Safety Data Sheet (SDS) from your supplier. The container label and SDS will explain the contents of the disinfectant, instructions for use and the specific precautions related to the contents of the disinfectant. Those precautions include personal protective equipment (PPE).



## KNOW YOUR DISINFECTANT'S ACTIVE INGREDIENTS

For the purpose of safely using this sprayer, you need to know what kind of **active ingredients** are in the disinfectant. Look on the container label for the list of active ingredients. There are two categories:






**ALCOHOL:** This type of disinfectant contains flammable active ingredients such as ethanol (ethyl alcohol) or isopropanol (IPA). The container label should indicate that this disinfectant is **COMBUSTIBLE** or **FLAMMABLE**. Your sprayer is compatible with this type of disinfectant. Use flammable disinfectants in a well-ventilated area with a flow of fresh air. See the safety warnings in this manual.



**NON-ALCOHOL:** This type of disinfectant contains active ingredients such as aldehydes, phenols, quaternary ammonium compounds, sodium hypochlorite (bleach), peroxyacetic acid, hydrogen peroxide, and hypochlorous acid. Your sprayer is compatible with this type of disinfectant.

# Warnings

The following warnings are for the setup, use, grounding, maintenance, and repair of this equipment. The exclamation point symbol alerts you to a general warning and the hazard symbols refer to procedure-specific risks. When these symbols appear in the body of this manual or on warning labels, refer back to these Warnings. Product-specific hazard symbols and warnings not covered in this section may appear throughout the body of this manual where applicable.

 <h2 style="margin: 0;">WARNING</h2>	
	<p><b>CHEMICAL HAZARD</b></p> <p>Toxic disinfectant or fumes can cause serious injury or death if splashed in the eyes or on skin, inhaled, or swallowed.</p> <ul style="list-style-type: none"> <li>• Keep away from children.</li> <li>• Use only to spray surfaces. Do not spray people or animals.</li> <li>• Use only with appropriate personal protective equipment. See <b>PERSONAL PROTECTIVE EQUIPMENT</b> on page 6.</li> <li>• Follow all directions and requirements on disinfectant label. It is a violation of Federal law to use an EPA-approved disinfectant in a manner inconsistent with its labeling.</li> <li>• Flush with water after each use. Never store disinfectant in equipment.</li> <li>• Read Safety Data Sheets (SDSs) to know the specific hazards of the disinfectants you are using.</li> <li>• Store and dispose of disinfectants according to instructions on disinfectant container labels.</li> </ul>
	<p><b>FIRE AND EXPLOSION HAZARD</b></p> <p>Flammable fumes, such as disinfectants, in <b>work area</b> can ignite or explode. Disinfectants flowing through the equipment can cause static sparking. To help prevent fire and explosion:</p> <ul style="list-style-type: none"> <li>• Keep sprayer area well-ventilated. Keep a good supply of fresh air moving through the area.</li> <li>• Do not spray flammable disinfectants near an open flame or sources of ignition such as cigarettes, motors, and electrical equipment.</li> <li>• Ground all equipment in the work area. Connect to a grounded outlet and use grounded extension cords. See <b>Grounding</b> instructions.</li> <li>• Never spray or flush disinfectant at high pressure.</li> <li>• Keep work area free of debris, including disinfectant containers, rags and gasoline.</li> <li>• Do not plug or unplug power cords, or turn power or light switches on or off when flammable fumes are present.</li> <li>• Use only grounded hoses.</li> <li>• Hold gun firmly to side of grounded pail when triggering into pail. Do not use pail liners unless they are anti-static or conductive.</li> <li>• <b>Stop operation immediately</b> if static sparking occurs or you feel a shock. Do not use equipment until you identify and correct the problem.</li> <li>• Keep a working fire extinguisher in the work area.</li> </ul>



# **WARNING**



### **ELECTRIC SHOCK HAZARD**

This equipment must be grounded. Improper grounding, setup, or usage of the system can cause electric shock.

- Turn off and disconnect power cord before servicing equipment.
- Connect only to grounded electrical outlets.
- Use only 3-wire extension cords.
- Ensure ground prongs are intact on power and extension cords.
- Do not expose to rain. Store indoors.








### **SKIN INJECTION HAZARD**

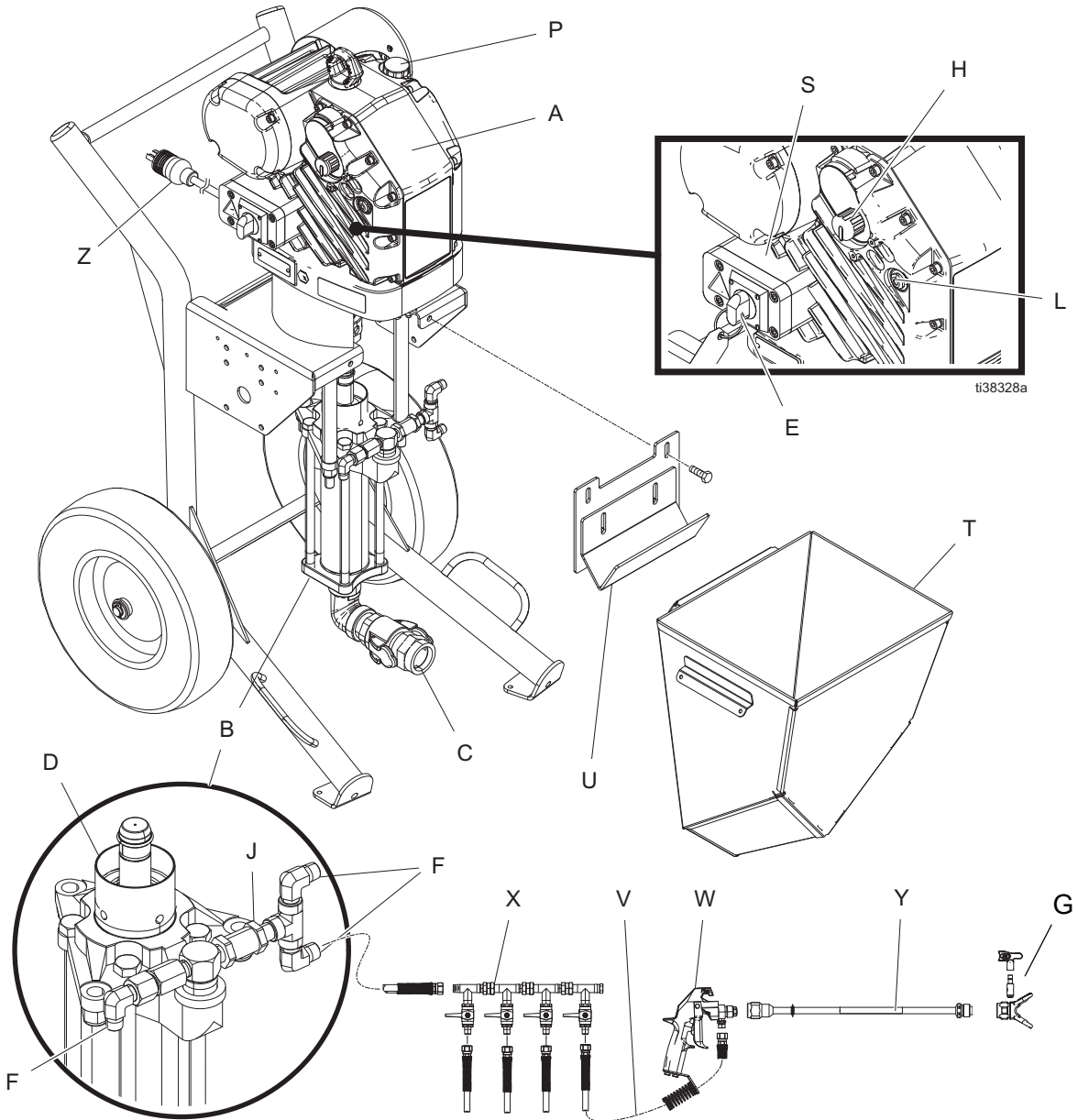
High-pressure spray from gun, hose leaks, or ruptured components will pierce skin. This may look like just a cut, but it is a serious injury that can result in amputation. **Get immediate surgical treatment.**

- Use only to spray surfaces. Do not spray people or animals.
- Do not point spray tip at anyone or place any part of your body in front of tip. For example, do not try to stop leaks with any part of the body.
- Do not spray without tip guard installed.
- Engage trigger lock when not spraying. Verify the trigger lock is functioning properly.
- Do not stop or deflect leaks with your hand, body, glove, or rag.
- Equipment maintains pressure after power is shut off. Do not leave equipment energized or under pressure while unattended. Unplug the sprayer and follow the **Pressure Relief Procedure** on page 15 when the equipment is unattended or not in use, and before servicing, cleaning, or removing parts.
- Follow the **Pressure Relief Procedure** when you stop spraying and before cleaning, checking, or servicing equipment.
- Verify that all connections are secure before operating the unit.
- Check hoses and parts for signs of damage. Replace any damaged hoses or parts.

# **WARNING**

 	<p><b>EQUIPMENT MISUSE HAZARD</b> Misuse can cause death or serious injury.</p> <ul style="list-style-type: none"> <li>• Do not operate or spray near children. Keep children away from equipment at all times.</li> <li>• Do not operate the unit when fatigued or under the influence of drugs or alcohol.</li> <li>• Do not exceed the maximum working pressure or temperature rating of the lowest rated system component. See <b>Technical Specifications</b> in all equipment manuals.</li> <li>• Use disinfectants that are compatible with equipment wetted parts. See <b>Technical Specifications</b> in all equipment manuals. Read disinfectant manufacturer's warnings. For complete information about your disinfectant, request Safety Data Sheets (SDSs) from distributor or retailer.</li> <li>• Do not leave the work area while equipment is energized or under pressure.</li> <li>• Turn off all equipment and follow the <b>Pressure Relief Procedure</b> when equipment is not in use.</li> <li>• Check equipment daily. Repair or replace worn or damaged parts immediately with genuine manufacturer's replacement parts only.</li> <li>• Do not alter or modify equipment. Alterations or modifications may void agency approvals and create safety hazards.</li> <li>• Make sure all equipment is rated and approved for the environment in which you are using it.</li> <li>• Use equipment only for its intended purpose. Call your distributor for information.</li> <li>• Route hoses and cables away from traffic areas, sharp edges, moving parts, and hot surfaces.</li> <li>• Do not kink or over bend hoses or use hoses to pull equipment.</li> <li>• Comply with all applicable safety regulations.</li> </ul>
 	<p><b>MOVING PARTS HAZARD</b> Moving parts can pinch, cut or amputate fingers and other body parts.</p> <ul style="list-style-type: none"> <li>• Keep clear of moving parts.</li> <li>• Do not operate equipment with protective guards or covers removed.</li> <li>• Equipment can start without warning. Before checking, moving, or servicing equipment, follow the <b>Pressure Relief Procedure</b> and disconnect all power sources.</li> </ul>
	<p><b>PERSONAL PROTECTIVE EQUIPMENT</b> Wear appropriate protective equipment when in the work area to help prevent serious injury, including eye injury, burns, hearing loss, and inhalation of disinfectant chemical mists and vapors. Protective equipment includes but is not limited to:</p> <ul style="list-style-type: none"> <li>• Protective eye-wear, and hearing protection.</li> <li>• Appropriate respirators, protective clothing, and gloves.</li> <li>• All protective equipment specified by the disinfectant manufacturer.</li> </ul>

# Component Identification



Ref.	Description
A	Electric Motor
B	Pump
C	Disinfectant Inlet
D	Packing Nut
E	Power Switch
F	Disinfectant Outlet
G	Tip and Tip Guard Assembly
H	Pressure Adjustment Knob
J	Outlet Check Valve
L	Status Indicator Light (LED)

Ref.	Description
M	Rupture Disc
P	Oil Fill Cap (vented)
S	Junction Box
T	Hopper
U	Hopper Bracket
V	Airless Hose
W	Gun
X	4-gun manifold
Y	Gun Extension
Z	Power Cord

# Installation

## Grounding



The equipment must be grounded to reduce the risk of static sparking and electric shock. Electric or static sparking can cause fumes to ignite or explode. Improper grounding can cause electric shock. Grounding provides an escape wire for the electric current.

**Sprayer:** Ground the sprayer by plugging it into an outlet that is properly installed and grounded in accordance with all applicable regulations. Do not modify the power cord provided; if it does not fit the outlet, have the proper outlet installed by a qualified electrician.

**Disinfectant hoses:** Use only electrically conductive hoses (hoses that allow the flow of static electricity). To ensure grounding continuity, do not exceed the recommended maximum hose length of 500 ft. (152.4 m) per gun.

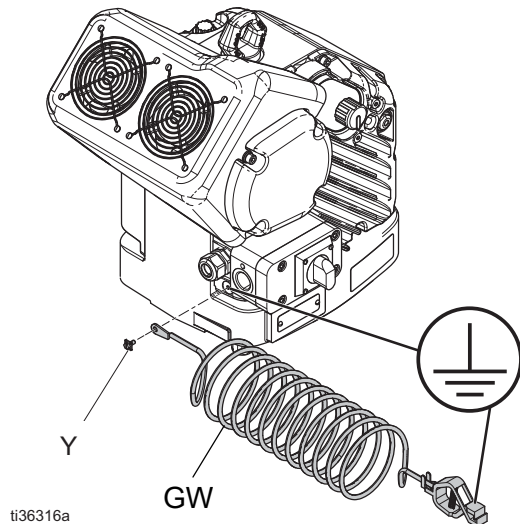
**Spray gun:** The gun is grounded through its connection to a properly grounded disinfectant hose and sprayer.

**For disinfectants with alcohol active ingredients:**

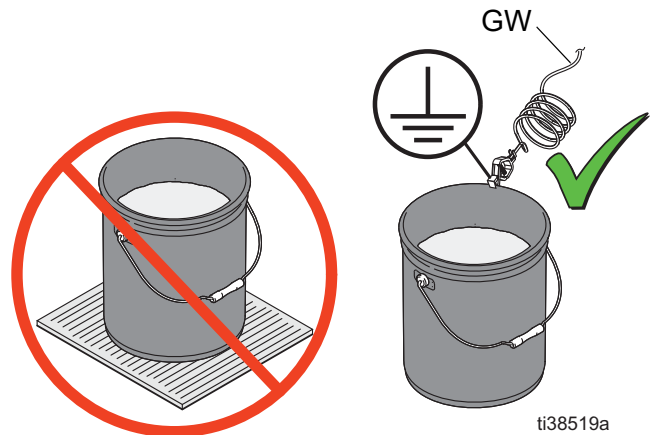
When you are using disinfectants with alcohol-based active ingredients, you must use conductive metal containers, which are able to be grounded.

To ground metal supply and flushing containers, use a grounding wire and clamp (GW) (Graco part 244524 - not supplied). Do not place grounded metal containers on a non-conductive surface, such as paper or cardboard, which interrupts grounding continuity.

1. Connect a ground wire (not included) to the ground stud (Y) on the back of the motor.



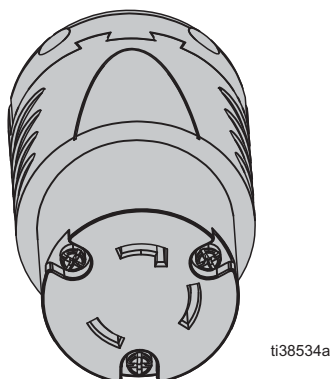
2. Clamp other end of grounding wire (GW) to the metal container.



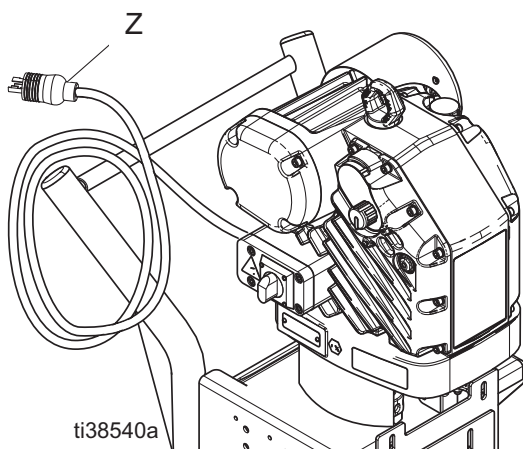
## Connect Power

**NOTE:** The sprayer is rated 200-240 Vac, 1 Phase, 20A, 50/60 Hz. A dedicated 20A circuit with a NEMA L6-20R receptacle is required.

1. Before use, verify that you have the required 20-Amp circuit with a NEMA L6-20R receptacle.



2. Plug the power cord (Z) into the receptacle.



## Extension Cords

If an extension cord is necessary, use a 12 AWG (2.5 mm<sup>2</sup>) or thicker cord to carry the current that the sprayer draws. Undersized extension cords result in a drop in line voltage and loss of power and overheating.

Select the minimum cord wire gauge based on length according to the table below:

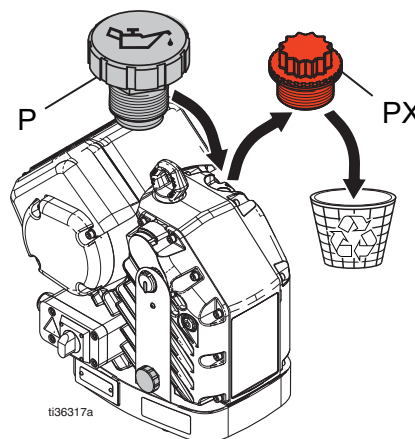
Length	Gauge	mm <sup>2</sup>
50 ft (15.24 m)	12 AWG	3.31
100 ft (30.48 m)	10 AWG	5.26
200 ft (60.96 m)	6 AWG	13.29
300 ft (91.44 m)	4 AWG	21.14

Make sure your extension cord is not damaged.



## Install Vented Oil Cap Before Using Equipment

The sprayer's motor gear box is shipped from the factory pre-filled with oil. The temporary unvented cap (PX) prevents oil leaks during shipment.

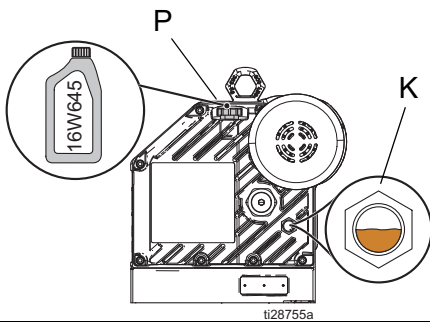
Replace the temporary unvented cap (PX) with the oil fill cap (P) before use.



# Setup

				
To avoid tipping over, make sure the cart is on a flat and level surface. Failure to do so could result in injury, such as crushing.				

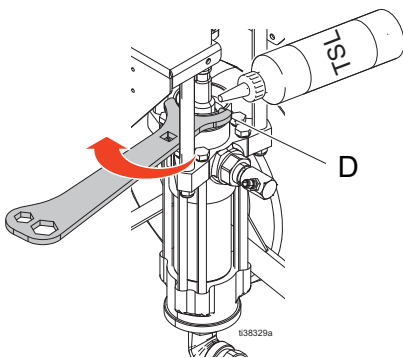
1. Position the sprayer on a level surface. Check the oil level in the sight glass (K). If needed, fill until the oil level is near the halfway point of the sight glass. The oil capacity is approximately 1.0–1.2 quarts (0.9–1.1 liters). Do not overfill.



**NOTICE**

Only use Graco oil (part number 16W645) in this sprayer. Any other oil may not lubricate properly and can cause damage to the drive train.

2. Use the included spanner wrench to make sure the packing nut (D) is just tight. Fill 1/3 full with Throat Seal Liquid (TSL™). Refill as needed.

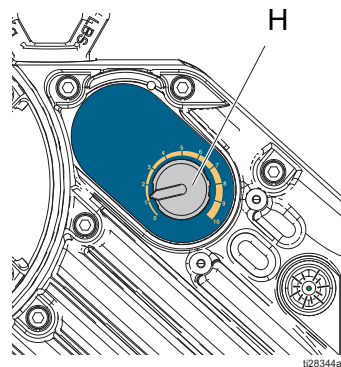


3. Determine your supply option. See **Disinfectant Supply Options** on page 11.
4. Attach electrically conductive airless hoses (V), 4-gun manifolds, and guns. See **Connect Hose(s) and Gun(s)** on page 12.

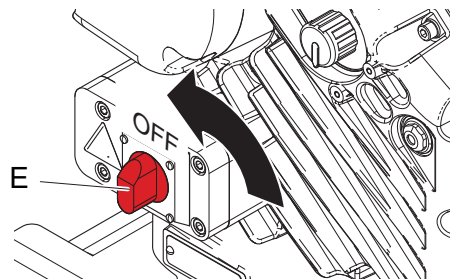
**NOTICE**

Your sprayer comes with a factory-installed outlet check valve (J). Do not attach the airless hoses (V) directly to the pump, as this can cause air bubbles to form in the disinfectant. The outlet check valve prevents air bubbles from forming, which can cause damage to the sprayer.

5. Make sure the pressure setting is at the lowest level. Pull the pressure adjustment knob (H) out and turn counterclockwise until it stops, then push the knob in to lock.



6. Turn the power switch (E) OFF. Plug the power cord into a grounded outlet.



## Flush Before Using the Sprayer

Your sprayer's pump has been factory-tested with lightweight oil. A small amount of this oil is left in the pump to protect parts. To avoid contaminating your disinfectant with oil, flush the sprayer with warm soapy water before using it for the first time.

See **Flushing and Cleaning**, page 20.



## Disinfectant Supply Options

You will need to determine which supply option will work best for your job.

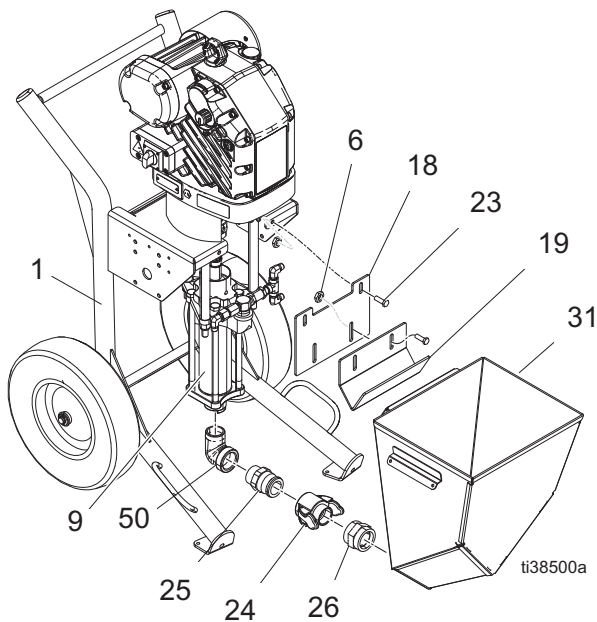
- Hopper Feed
- Suction Tube Feed

Your sprayer comes from the factory installed with a disinfectant hopper. For bigger jobs, you can connect a separate suction tube to draw disinfectant directly from a larger container.

To use the suction tube, you will need to **Remove the Hopper** and follow the **Connect the Suction Tube** procedure.

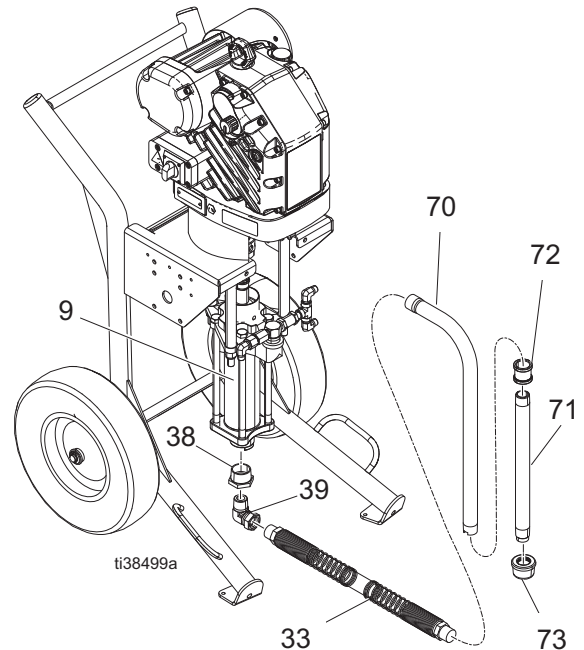
## Remove the Hopper

1. Disconnect fitting (24) from fitting (25).
2. Remove fitting (26) and fitting (24) from hopper (31).
3. Remove elbow (50) and fitting (25) from pump (9).
4. Remove nuts (6) and bolts (23) from hopper bracket (19) to cart bracket (18).
5. Remove nuts (6) and bolts (23) from cart bracket (18) and remove the bracket from cart (1).



## Connect the Suction Tube

1. Install fitting (38) and elbow (39) to the pump (9).
2. Connect the suction tube (70), coupler (72), feed tube (71), and strainer (73) to hose (33).
3. Connect hose (33) to elbow (39).
4. Proceed to **Connect Hose(s) and Gun(s)** on page 12.



## Connect the Hopper

1. Use nuts (6) and bolts (23) to attach the bracket (18) to the cart (1).
2. Loosely attach hopper bracket (19) to cart bracket (18) with nuts (6) and bolts (23).
3. Install elbow (50) and fitting (25) to the pump (9).
4. Install fitting (26) and fitting (24) to the hopper (31).
5. Connect fitting (24) to fitting (25).
6. Adjust the height on hopper bracket (19) until it fits under the lip on the back of the hopper (31). Tighten nuts (6).
7. Proceed to **Connect Hose(s) and Gun(s)** on page 12.

## Gun and Hose Setup Options

You will need to determine which gun setup option will work best for your job. There are two gun setup options for your sprayer:

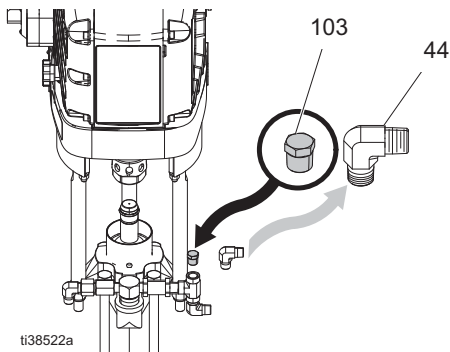
- **4-Gun Setup** (see page 13 for image)
- **8-Gun Setup** (see page 14 for image).

Whichever setup you choose, be sure to have an operator for each gun to be used. A single operator should never spray more than one gun at a time. Once you've determined your gun setup, proceed to **Connect Hose(s) and Gun(s)** on page 12.

## Connect Hose(s) and Gun(s)

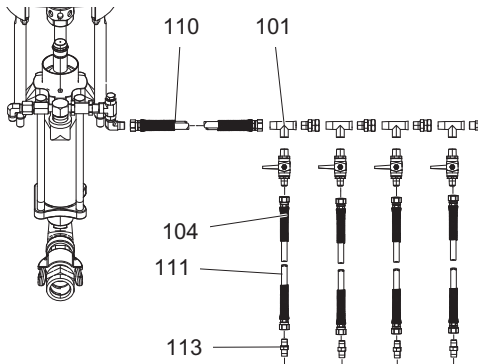
There are two disinfectant outlets (F) on your sprayer. Each outlet supports one 4-gun manifold. To use your sprayer with a 4-gun setup, you will need to plug 1 of the disinfectant outlets.

1. To plug a disinfectant outlet, remove elbow (44) and replace it with plug (103). See the **4-Gun Setup** illustration on page 13.



2. **4-gun and 8-gun setups:** Follow steps 3 - 7 one time for each 4-gun manifold. If you are using an 8-gun setup, you will have to perform these steps twice. See the **8-Gun Setup** illustration on page 14.

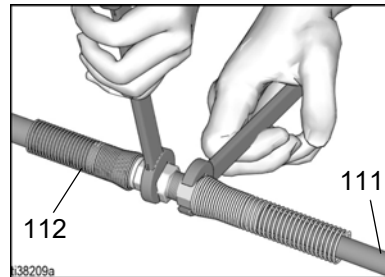
3. Connect a 3/8 in. airless hose (110) to elbow (44).



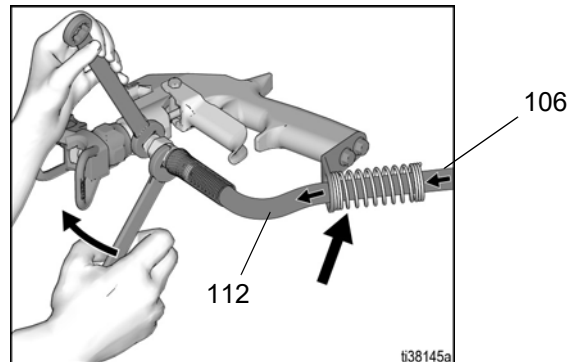
4. Connect a 3/8 in. airless hose (110) to the 4-gun manifold tee fitting (101).
5. Connect a 1/4 in. airless hose (111) to the outlet of each ball valve (104) on the 4-gun manifold.

**NOTE:** Use fitting (113) to add another 100 feet (30.4 m) of 1/4 in. airless hose (111). Your sprayer comes with enough hose for 300 ft (91.5 m) per gun. You can add an additional 200 ft (61 m) for a maximum of 500 (153 m) ft per gun.

6. Assemble the optional 1/8 in. airless whip hoses (112) to the end of each 1/4 in. airless hose (111). Use two wrenches to securely tighten hoses together.

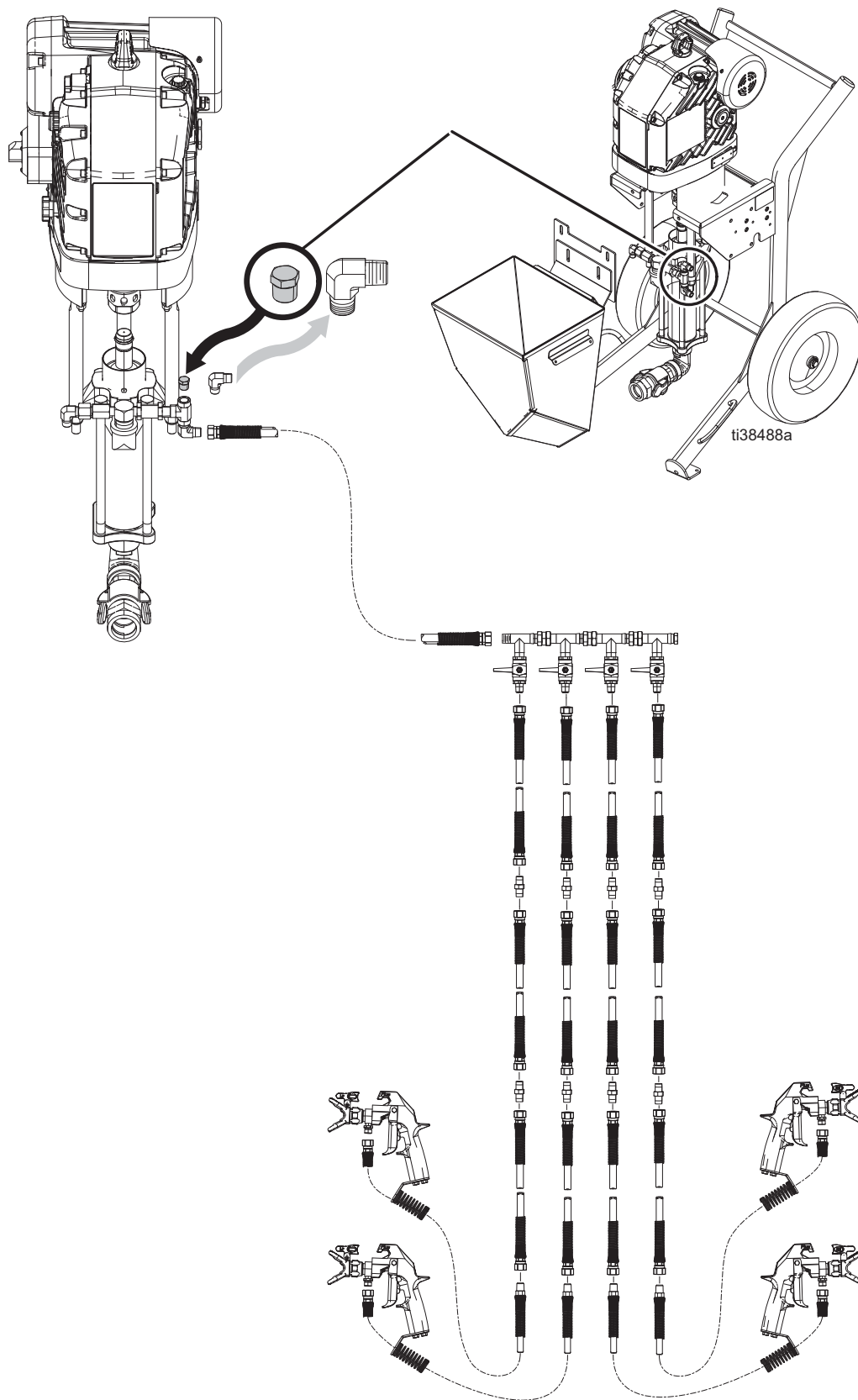


7. Insert the other end of each 1/8 in. airless whip hose (112) through the hose guard at the base of each spray gun (106). Use two wrenches to tighten securely.

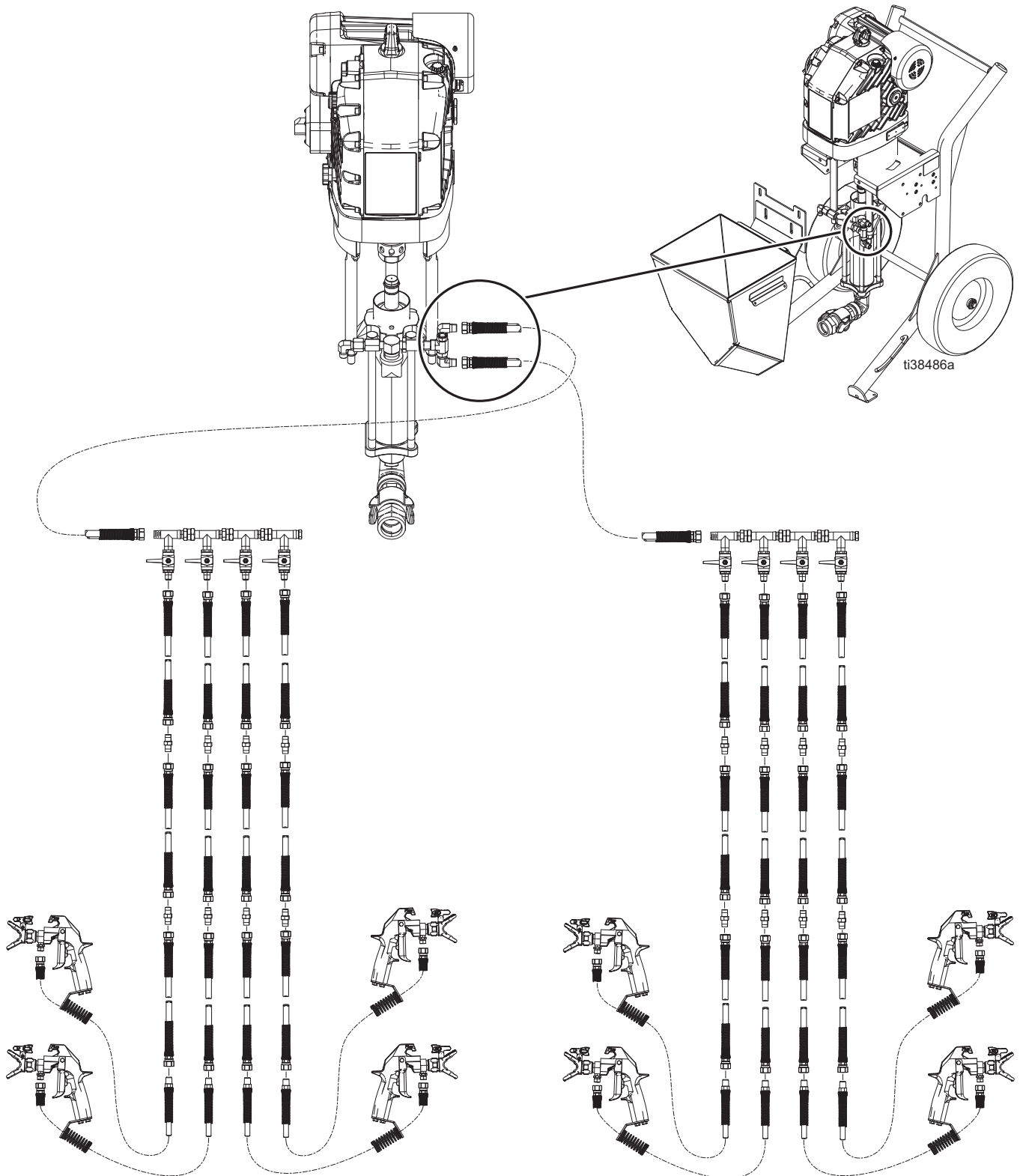




### 4-Gun Setup

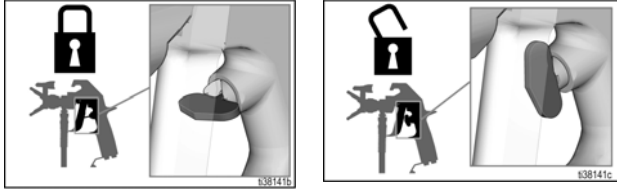


### 8-Gun Setup



## Trigger Lock

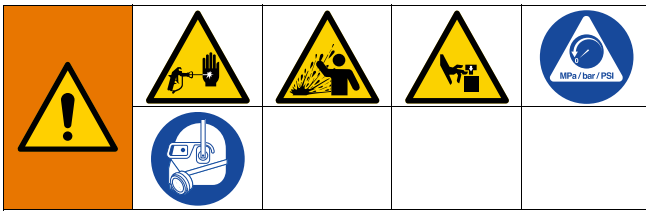
Each gun has a trigger lock to prevent it from being triggered accidentally by hand, or if a gun is dropped or bumped. Always engage a gun's trigger lock when it is not in use.



## Pressure Relief Procedure

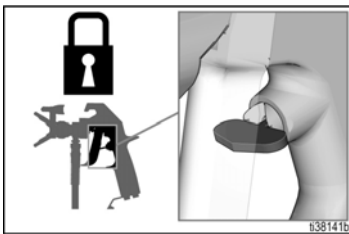


Follow the Pressure Relief Procedure whenever you see this symbol.

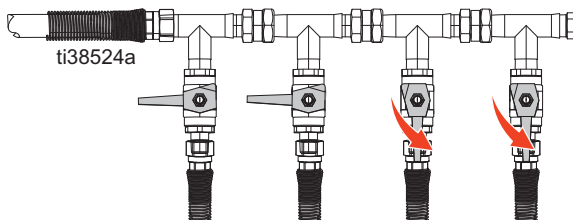


This equipment stays pressurized until pressure is manually relieved. To help prevent serious injury from pressurized disinfectant, such as skin injection, splashing disinfectant and moving parts, follow the Pressure Relief Procedure when you stop spraying and before cleaning, checking, or servicing the equipment.

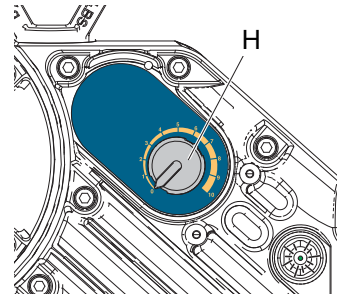
1. Engage all trigger locks.



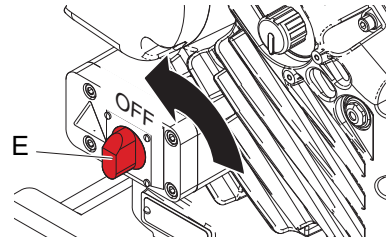
2. Open any ball valves in use on the 4-gun manifold. If using an 8-gun setup, open any ball valves in use on both 4-gun manifolds.



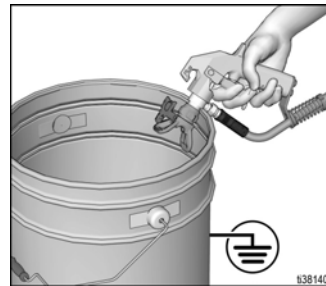
3. Make sure the pressure setting is at the lowest level. Pull the pressure adjustment knob (H) out and turn counterclockwise until it stops. Push the knob in to lock.



4. Turn the power switch (E) OFF.



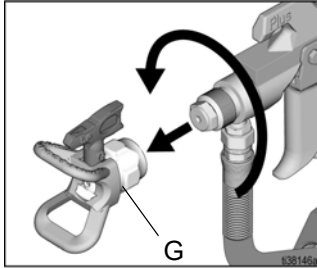
5. Disengage all trigger locks.
6. Hold each gun firmly against a grounded metal pail. Trigger the each gun to relieve pressure. Guns can be triggered individually or all at the same time. **NOTE:** Once the first gun has been triggered there will be a noticeable decrease in pressure, but the remaining guns will still need to be triggered to relieve all pressure.



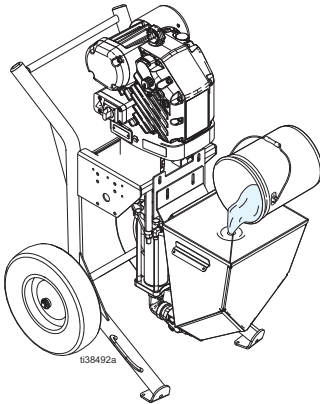
7. Engage all trigger locks.
8. If you suspect that a spray tip or hose is completely clogged or that pressure has not been fully relieved:
  - a. **VERY SLOWLY** loosen the tip guard retaining nut or hose end coupling to relieve pressure gradually.
  - b. Loosen the nut or hose end coupling completely.
  - c. With tip removed, trigger each gun into the pail.

## Prime the Sprayer

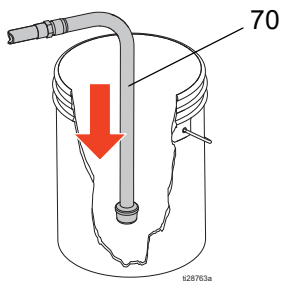
1. Follow the **Pressure Relief Procedure** on page 15.
2. Remove the tip and tip guard assembly (G) from each gun. If installed, also remove the gun extension.



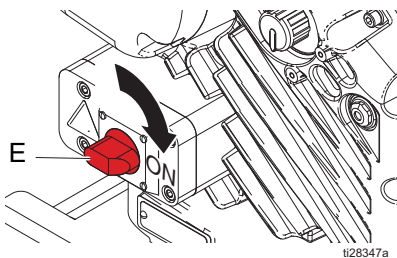
3. If using a hopper, fill the hopper with disinfectant.



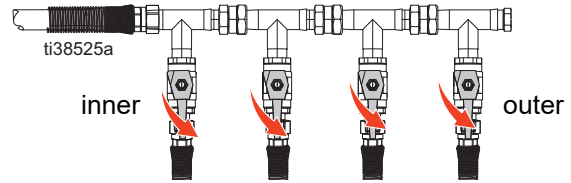
4. If using a suction tube (70), place the tube into your disinfectant container.



5. Turn the power switch (E) ON.

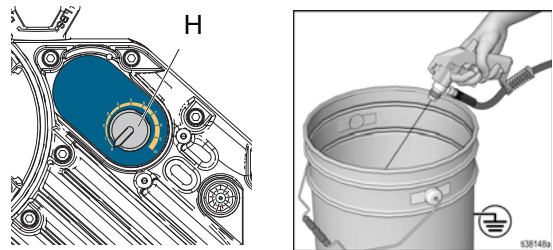


6. Open any ball valves to be used on the 4-gun manifold. If using an 8-gun setup, open any ball valves in use on both 4-gun manifolds.



**NOTE:** When spraying with fewer than four guns, always start by using the outer-most ball valve (position 1). Then work your way back towards the sprayer (position 2, position 3, etc) with each additional gun.

7. Prime the hoses and guns, either separately or all at once:
  - a. Disengage the trigger lock of each gun being used.
  - b. Trigger each gun into a grounded metal pail.
  - c. Pull out the pressure adjustment knob (H) and turn it clockwise slowly to increase pressure, until a steady stream flows from each gun.
  - d. Release all triggers, then push the pressure adjustment knob (H) in to lock.



- e. Engage each trigger lock.

**NOTE:** Hoses and guns can be primed individually or all at the same time.

- f. Inspect connections for leaks. If you find a leak, do not begin spraying. Follow the **Pressure Relief Procedure** on page 15. Tighten or replace the fittings and repeat the **Prime the Sprayer** procedure.

If there are no leaks, continue on the **Spray** section on page 18.

## Choose Your Spray Tip



To avoid serious injury from skin injection, do not put your hand in front of the spray tip when installing or removing the tip and tip guard.

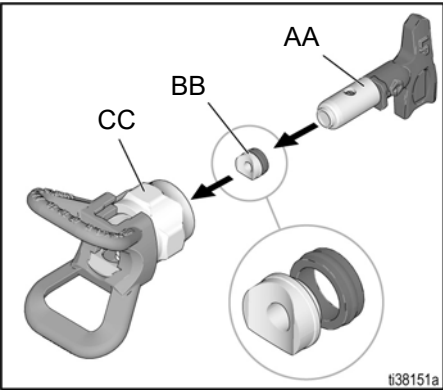
Your sprayer comes with four spray tip sizes:

Fine	LP617
Medium	LP621, LP723
Coarse	LP631

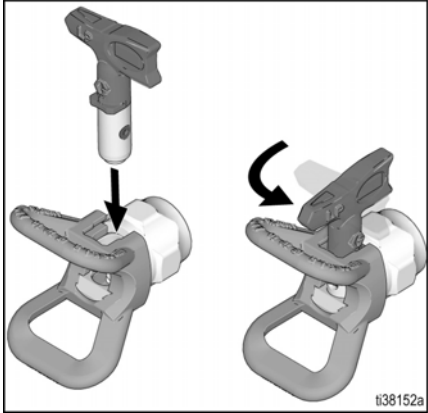
Select the appropriate spray tip size to provide the acceptable spray of disinfectant. Refer to the disinfectant label for manufacturer’s recommendations.

To prevent spray tip leaks, make certain the spray tip and tip guard are installed properly.

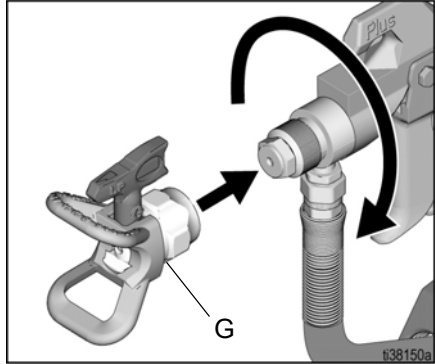
1. Follow the **Pressure Relief Procedure** on page 15.
2. Use spray tip (AA) to align the gasket and seal (BB) with the tip guard (CC).



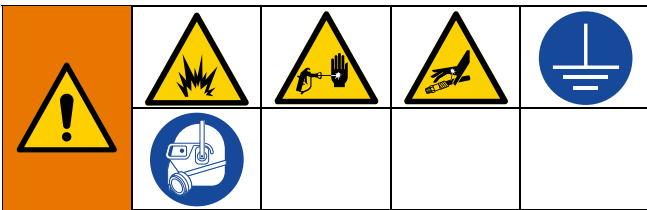
3. Insert the spray tip into the tip guard. Verify that the spray tip is forward in the SPRAY position.



4. Screw the tip guard assembly (G) onto the spray gun and tighten.



# Spray



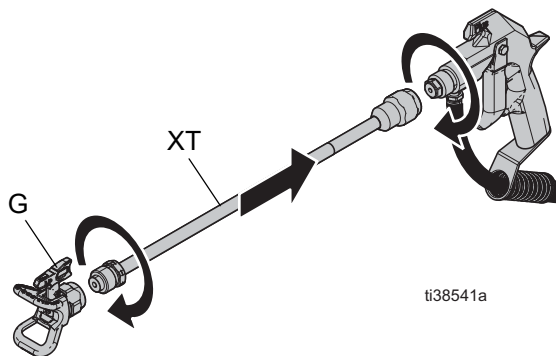
**Fumes from disinfectants with alcohol active ingredients, or from other flammable disinfectants can explode or ignite.** To prevent fumes from exploding or igniting:

- Keep the spray area well ventilated.
- Ground the equipment.

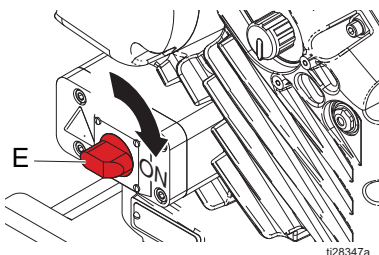
### NOTICE

Do not allow the pump to run out of disinfectant, as it can damage the pump.

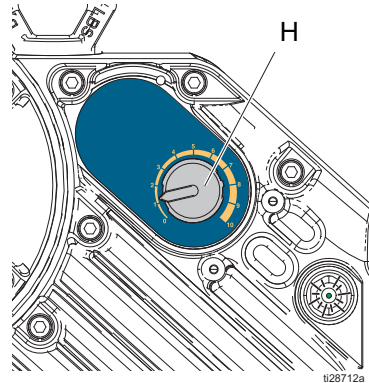
1. Follow the **Prime the Sprayer** procedure on page 16.
2. Follow the **Pressure Relief Procedure** on page 15.
3. Select the proper spray tip for your job. See **Choose Your Spray Tip** on page 17.
4. Install the tip and tip guard assembly (G) onto each gun to be used. If needed, install the optional gun extension (XT) between the tip guard assembly



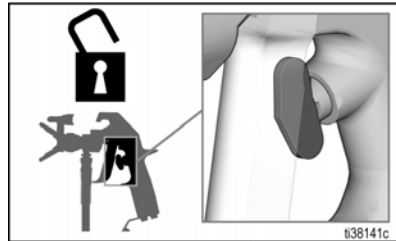
5. Turn the power switch (E) ON.



6. Point the guns toward the surfaces to be sprayed.
7. Confirm that the pressure adjustment knob (H) is at the lowest setting.




8. Disengage all trigger locks.



9. Pull and hold the gun triggers.
10. Slowly increase pressure using the pressure adjustment knob (H). Set the knob to the minimum setting needed to produce the desired spray of disinfectant. Push the knob in to lock.
11. Adjust the spray gun distance from the surface and your hand speed to achieve the desired surface coverage. Always refer to the disinfectant manufacturer's recommendations for an acceptable spray of disinfectant.
12. Flush the sprayer every time you are finished spraying. Follow the **Flushing and Cleaning** procedure on page 20.

## Clear Tip Clog

				
To avoid injury, never point the gun at your hand or into a rag.				

In the event debris clogs the spray tip, the gun is designed with a reversible spray tip that quickly and easily clears the particles without disassembling the gun.

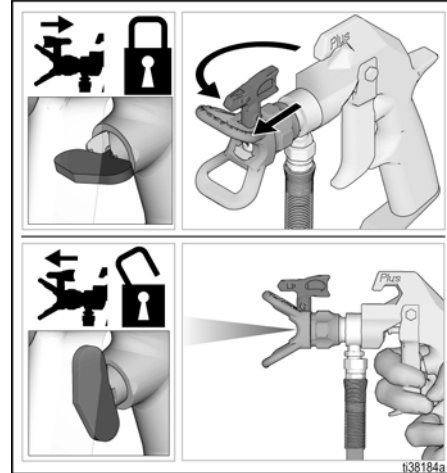
1. Release the trigger. Engage the trigger lock. Rotate the spray tip to the UNCLOG position. Disengage the trigger lock. Trigger the gun into a grounded metal pail to clear the clog.

### UNCLOG



2. Engage the trigger lock. Rotate the spray tip back to the SPRAY position. Disengage the trigger lock and continue spraying.

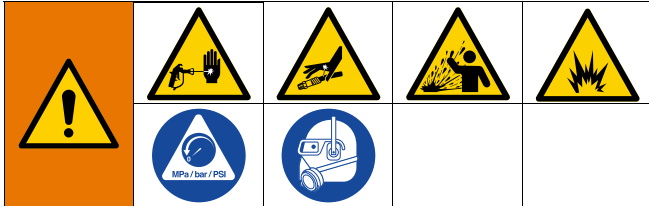
### SPRAY





## Flushing and Cleaning

Flushing the sprayer is required before you use your new sprayer for the first time and after each use. Flushing after use removes any disinfectants and residues from the sprayer. It will also help ensure a trouble-free startup the next time the sprayer is used.



**Use only water for cleaning.**

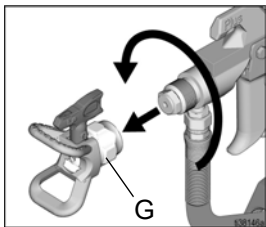
**Clean in a well-ventilated area.** Keep a good supply of fresh air moving through the area.

To avoid injury from splashing, always flush at the lowest possible pressure.

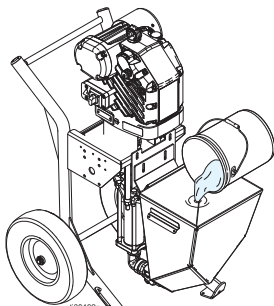
### NOTICE

Disinfectant left in the sprayer will damage the equipment. To avoid damage, always completely flush the sprayer with warm soapy water after every use. Do not store the sprayer with disinfectant in it.

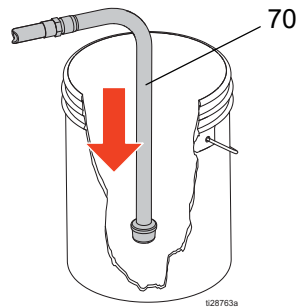
1. Follow the **Pressure Relief Procedure** on page 15.
2. Remove the tip and tip guard assembly (G) from each gun. If installed, also remove the gun extension.



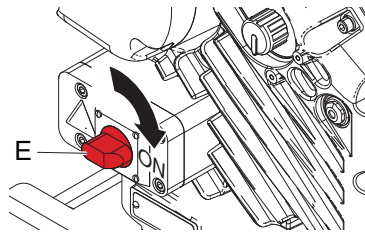
3. If using a hopper, dispense disinfectant until the hopper is empty (multiple guns can be used to speed up this process).
4. Fill the empty hopper with warm soapy water.



5. If using a suction tube, place the tube (70) into a pail of warm soapy water. To flush disinfectants with alcohol active ingredients, ground the pail according to **Grounding** on page 8.



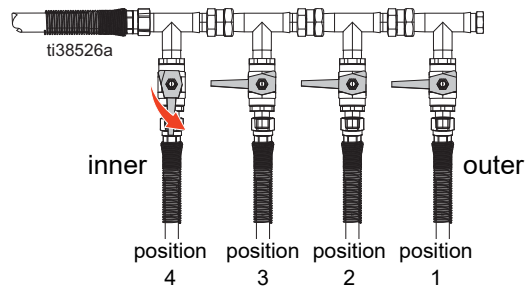
6. Turn the power switch (E) ON.



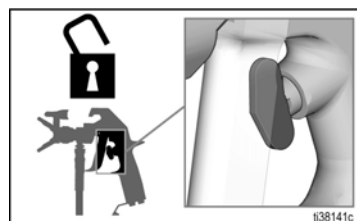
7. Flush the hoses and guns:

- a. Open all ball valves that have been used to spray. If using an 8-gun setup, be sure to open any ball valves used on both 4-gun manifolds.

**NOTE:** Guns used can be flushed all at once, or they can be flushed one at a time. If flushing one gun at a time, begin with the inner-most gun (position 4) and then work your way towards the outer-most gun (position 1) on each 4-gun manifold.



- b. Disengage trigger locks for the gun(s) to be flushed.

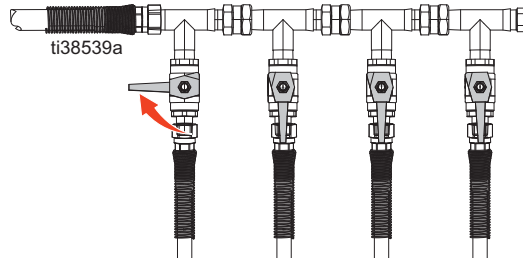




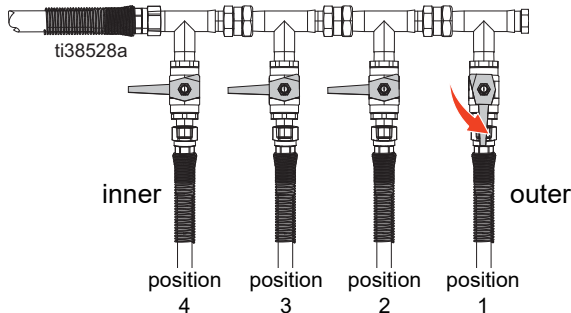
- c. Trigger each gun into a grounded metal pail.
- d. Pull out the pressure adjustment knob (H) and turn it clockwise slowly to increase pressure until a steady stream flows from the gun. Push the knob in to lock.



- e. Trigger each gun for at least one minute, then release the trigger.
- f. Close the ball valve for the gun you have just flushed, then trigger the gun again to relieve pressure.

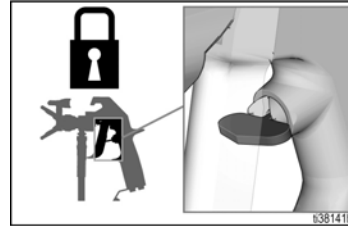


- g. Engage trigger lock.
- NOTE:** If flushing one gun at a time, proceed to the next gun in the line (described in the note below step 7a). Repeat steps 7b - 7e for each gun.
- h. To make sure the entire 4-gun manifold is completely flushed, trigger the gun at the outer-most ball valve furthest from sprayer (position 1) for an additional 30 seconds after flushing the other hoses. This will ensure there is no disinfectant left in the manifold.



**NOTE:** Flush all hoses and guns used at any point during spraying (even if you only opened the ball valve but did not spray the gun).

- i. Engage all trigger locks.

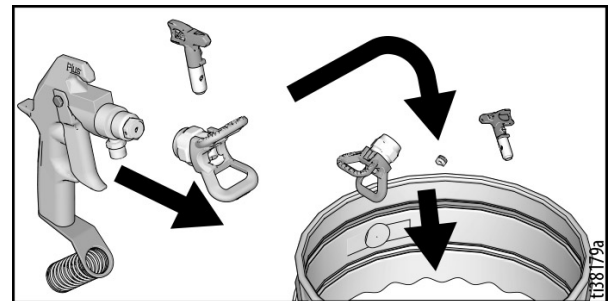


**NOTE:** If using an 8-gun setup, be sure to repeat steps to flush the hoses and guns for both 4-gun manifolds.

- 8. Wipe the sprayer and all hoses with a soft cloth moistened with warm soapy water.
- 9. Dispose of unused disinfectant in the waste pail according to instructions on the disinfectant container label and follow all applicable regulations.

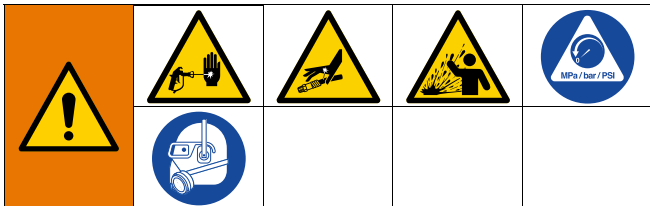
## Clean the Guns

- 1. Follow the **Pressure Relief Procedure** on page 15.
- 2. Remove the spray tips, tip guard assemblies, and gun extensions (if installed), then clean with warm soapy water and a brush.



- 3. Wipe the spray guns with a soft cloth moistened with warm soapy water.

## Shutdown / Storage



### Shutdown

1. Follow the **Flushing and Cleaning** procedure on page 20.
2. Follow the **Pressure Relief Procedure** on page 15.

#### NOTICE

For overnight shutdown, stop the pump at the bottom of its stroke to prevent damaging the pump rod and throat packings.

## Storage

#### NOTICE

Disinfectant left in the sprayer will damage the equipment. To avoid damage, always completely flush the sprayer with warm soapy water after every use. See **Flushing and Cleaning** on page 20. Do not store the sprayer with disinfectant in it.

- Before storing the sprayer, make sure all water is drained from the sprayer and airless hoses.
- Do not allow water to freeze in the sprayer or hoses.
- Do not store the sprayer while it is under pressure.
- Store the sprayer indoors.
- Store with all hoses and guns connected to 4-gun manifold.

# Maintenance



## NOTICE

Do not open/remove the gear cover. The gear side is not intended to be serviced. Opening the gear cover may alter the factory set bearings and may reduce the sprayer's life.

## Preventative Maintenance Schedule

The operating conditions of your sprayer affect how often maintenance is required. Establish a preventive maintenance schedule by recording when and what kind of maintenance is needed, and then determine a regular schedule for checking your sprayer.

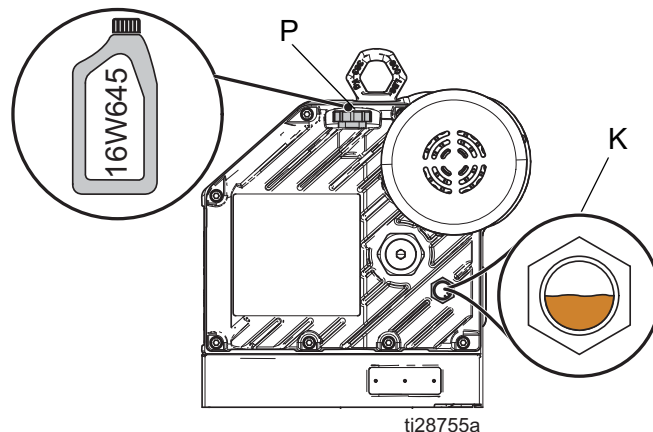
Every 40 hours of operation, check that the packing nut is tight. Follow the **Pressure Relief Procedure** on page 15, then use a wrench to tighten the packing nut (D) until just snug.

## NOTICE

Do not over-tighten. The packing nut can become stripped and damaged.

## Check the Oil

Position the sprayer on a level surface. Check the oil level in the sight glass (K). If needed, fill until the oil level near the halfway point of the sight glass. Do not overfill.



## Change the Oil

**NOTE:** Change the oil after a break-in period of approximately 250 hours of use. After the break-in period, change the oil once a year.

1. Follow the **Pressure Relief Procedure** on page 15.
2. Place a minimum 2 quart (1.9 liter) container under the oil drain port. Remove the oil drain plug and allow all oil to drain from the motor.
3. Reinstall the oil drain plug. Torque to 18–23 ft-lb (25–30 N•m).

## NOTICE

Do not over-torque. The drain plug can become stripped and damaged.

4. Position the sprayer on a level surface. Fill until the oil level is near the halfway point of the sight glass. The oil capacity is approximately 1.0–1.2 quarts (0.9–1.1 liters). Do not overfill.

## NOTICE

Only use Graco oil (part number 16W645) in this sprayer. Any other oil may not lubricate properly and can cause damage to the drive train.

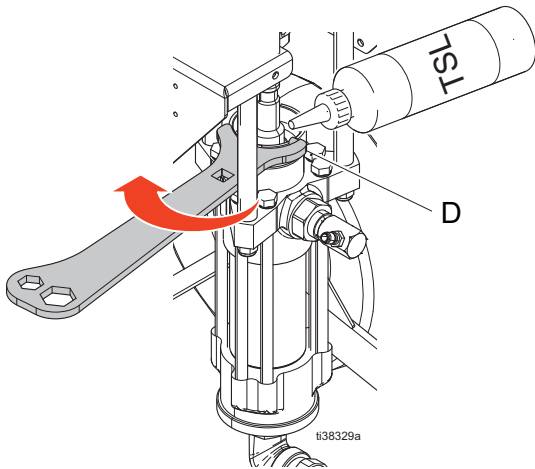
5. Reinstall the oil fill cap (P).

## Daily Maintenance

### NOTICE

For overnight shutdown, stop the pump at the bottom of its stroke to prevent damaging the pump rod and throat packings.

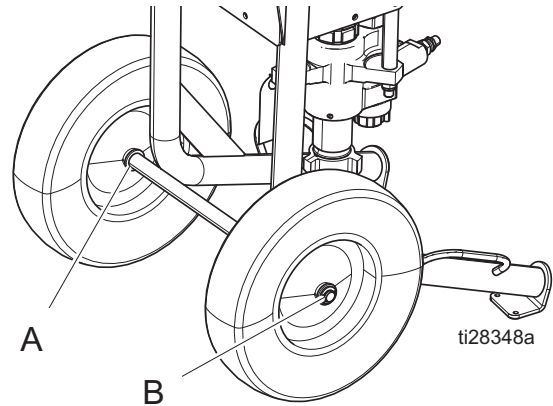
1. Follow the **Flushing and Cleaning** procedure on page 20.
2. Follow the **Pressure Relief Procedure** on page 15.
3. Use the included spanner wrench to make sure the packing nut (D) is just tight. Refill with Throat Seal Liquid (TSL™) as needed.



4. Check all hoses and fitting connections for leaks. Tighten all connections before each use.
5. Check hoses for damage every time you spray. Do not attempt to repair the hose if the hose jacket or fittings are damaged. Replace all damaged parts.

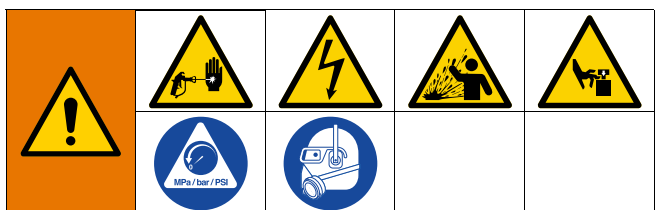
## Cart Maintenance

Periodically lubricate the axle between points A and B with lightweight oil (see below).



Keep the cart clean by wiping up spills daily.

# Troubleshooting



Unplug the power cord and follow the **Pressure Relief Procedure** on page 15 before checking or repairing your sprayer.

**NOTE:** Check all possible problems and solutions listed in the table below before disassembling the pump.

**NOTE:** The status indicator (L) on the motor will blink if an error is detected.

Problem	Cause	Solution
Pump output is low on both up and down strokes	Disinfectant supply is empty	Refill the disinfectant supply and prime the pump.
	* Clogged disinfectant outlet line, gun, etc. The hose inner diameter is too small.	Clear the hose, outlet check valve, or gun; use the hose with the larger inner diameter.
	Worn piston packing	Replace the piston packing. See your pump manual.
	Inlet strainer is clogged (if using suction tube)	Remove and clean inlet strainer, then reinstall.
No output	Improperly installed intake or piston check valves	Check and repair. See your pump manual.
	Intake valve is clogged	Clean the intake valve.
	Disinfectant supply is empty	Refill the disinfectant supply and prime the pump.
Pump will not operate	Disinfectant supply is empty	Refill the disinfectant supply and prime the pump.
	* Clogged disinfectant hose, gun, or spray tip	Follow the <b>Clear Tip Clog</b> procedure on page 19, or clean the hose and gun.
	Motor parts are worn or damaged	Repair or replace the motor (see your motor manual). <b>Disconnect the Pump</b> (see page 29). If the motor will not cycle and does not blink an error code, then troubleshoot the motor or replace.
No pressure or flow	Disinfectant is leaking from the rupture disk	Follow <b>Replace the Rupture Disc Assembly</b> procedure on page 31. Do not replace with a pipe plug.
	The inlet is clogged	Clean the inlet. Clean the inlet strainer if using a suction tube.
Motor does not turn on	Over voltage (over 300 V)	See the power supply requirements in your motor manual.
	No power to the control board	Verify that the power supply is connected. Check the junction box connections.
Output low on the down stroke	Open or worn intake valve	Clear or service the intake valve.
Output low on the up stroke	Open or worn piston valve packings	Clear the piston valve. Replace the packings.

\* To determine if a disinfectant hose or gun is obstructed, follow the **Pressure Relief Procedure** on page 15. Disconnect disinfectant hose and place a container at pump disinfectant outlet to catch any disinfectant. Turn pressure adjustment knob just enough to start the pump. If the pump starts, the obstruction is in the disinfectant hose or gun.

<b>Problem</b>	<b>Cause</b>	<b>Solution</b>
Erratic or accelerated pump speed	Disinfectant supply is empty	Refill and prime the pump.
	Clogged suction	Clean the suction tube.
	Open or worn piston valve packings	Clear the piston valve. Replace the packings.
	Open or worn intake valve	Clear or service the intake valve.
	Clogged gun, hose, outlet, etc.	Clear the gun, hose, outlet, etc.
	Open or worn outlet check valve	Clear or service the outlet check valve.
Cycles or fails to hold pressure at stall	Worn intake or piston valve or seals	Service the pump (see your pump manual).
Poor or irregular spray pattern	Incorrect disinfectant pressure at gun	See your gun manual. Read the disinfectant manufacturer's recommendations.
	Dirty, worn, or damaged spray gun	Service the spray gun (see your spray gun manual).
Motor does not turn over and LED is off	Over voltage (greater than 300 V)	Check the power supply.
	No power to the control board	Verify that the power supply is connected. Check the junction box connections.
Motor does not turn over and LED is on	Encoder fault	Cycle power. Recalibrate the encoder following the procedure listed in your motor manual. Contact your Graco distributor or Tech Service for more information.
Oil is leaking	Oil was over filled	Drain and refill oil as stated in <b>Check the Oil</b> , page 23.
	Drain plug is not tightened properly	Torque to 18-23 ft-lb (25-30 N•m).
	Seal cartridge o-ring missing or damage	Replace the shaft bearing assembly. See your motor manual.

## Error Code Troubleshooting

To troubleshoot using an error code, you need to first determine your blink code.

1. The blink code is displayed using the status indicator (L) on the motor. The blink code given below indicates the sequence. For example, blink code 2 indicates two blinks, a pause, and then repeats.
2. Error codes can take two forms:
  - Alarm: Alerts you to the cause of the alarm and shuts down the motor.
  - Deviation: Alerts you to the problem, but the motor may continue to run until the absolute limits are reached.

**NOTE:** To clear an error code, first try turning the pressure adjustment knob (H) counterclockwise until it stops. If the status indicator (L) does not stop blinking shortly after turning the knob to zero, cycle the power by turning the power switch (E) to the OFF position for at least 30 seconds before turning back ON.

### Standby Mode

When slow blinking is displayed, the motor has entered Standby Mode. The motor will enter Standby Mode when powered on and pressurized with a knob setting greater than 7, and the pump has not moved any disinfectant for 30 minutes.

Standby Mode will be exited when:

- Disinfectant starts to dispense and causes the pump to move, OR
- The pressure control knob (H) is adjusted, OR
- The power switch (E) is cycled OFF and ON

### Error Codes Table

Blink Code	Error Type	Troubleshooting Steps
1	Alarm	<p><b>Pump Diving</b></p> <p>Pump diving is when the pump moves through the down stroke too rapidly. A pressure imbalance between the up and down stroke of the pump cause the pump to dive with excessive speed.</p> <ul style="list-style-type: none"> <li>• Pump diving may occur when the pump runs out of disinfectant while spraying at high pressure.</li> <li>• Verify that disinfectant is being properly fed to the pump.</li> <li>• Pressure from the hose could flow back into the pump on the down stroke.</li> <li>• Verify that the check valve is installed and is properly working.</li> <li>• Cycle power and check status indicator (L) to see if the error is still active.</li> </ul>
2	Alarm	<p><b>Voltage Too Low</b></p> <ul style="list-style-type: none"> <li>• Verify that line voltage is within the range specified in <b>Technical Specifications</b>, page 37.</li> <li>• Cycle power and check status indicator (L) to see if the error is still active.</li> </ul>
3	Alarm	<p><b>Voltage Too High</b></p> <ul style="list-style-type: none"> <li>• Verify that line voltage is within the range specified in <b>Technical Specifications</b>, page 37.</li> <li>• Cycle power and check status indicator (L) to see if the error is still active.</li> </ul>

Blink Code	Error Type	Troubleshooting Steps
4	Deviation	<p><b>High Temperature</b></p> <p>The temperature of the system is near the maximum operation temperature. The performance has been reduced to prevent the motor from completely shutting down.</p> <ul style="list-style-type: none"> <li>• Reduce pressure.</li> <li>• Move the sprayer to a cooler location.</li> </ul>
5	Deviation	<p><b>Low Temperature</b></p> <p>Move the sprayer to a warmer location</p>
6	Alarm	<p><b>Motor Temperature Fault</b></p> <p>Motor is running too hot. Allow unit to cool.</p> <ul style="list-style-type: none"> <li>• Reduce pressure.</li> <li>• Move the sprayer to a cooler location.</li> </ul>
7	Alarm	<p><b>Board Temperature Fault</b></p> <p>The control board is running too hot. Allow the sprayer to cool.</p> <ul style="list-style-type: none"> <li>• Reduce pressure.</li> <li>• Move the sprayer to a cooler location.</li> </ul>
8	Alarm	<p><b>Encoder Calibration Error</b></p> <ul style="list-style-type: none"> <li>• Cycle power and check status indicator (L) to see if the error is still active.</li> <li>• Follow the calibration procedure listed in your motor manual to calibrate the encoder (this code will blink if calibration is in progress).</li> <li>• Contact your Graco distributor or Tech Service for more information.</li> </ul>
9	Alarm	<p><b>Encoder Error</b></p> <ul style="list-style-type: none"> <li>• Cycle power and check the status indicator (L) to see if the error is still active.</li> <li>• Verify that the internal connections are intact.</li> <li>• Contact your Graco distributor or Tech Service for more information.</li> </ul>
10	Alarm	<p><b>Software Versions Do Not Match</b></p> <p>Obtain software update token. See your motor manual for the token part number and token installation information.</p>
11	Alarm	<p><b>Circuit Board Communication Failure</b></p> <p>Cycle power and check status indicator (L) to see if the error is still active. Contact your Graco distributor or Tech Service for more information.</p>
12	Alarm	<p><b>Internal Circuit Board Hardware Failure</b></p> <p>Cycle power and check status indicator (L) to see if the error is still active. Contact your Graco distributor or Tech Service for more information.</p>
13, 14	Alarm	<p><b>Internal Software Error</b></p> <p>Cycle power and check status indicator (L) to see if the error is still active. Contact your Graco distributor or Tech Service for more information.</p>
Slow Blink	Deviation	<p>See <b>Standby Mode</b>, page 27.</p>



# Repair

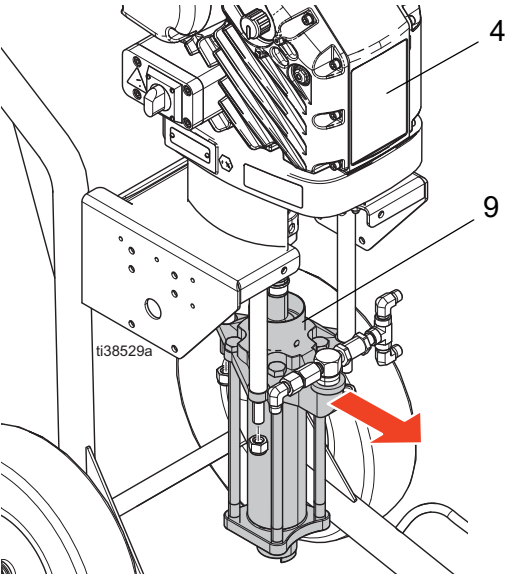
## Disconnect the Pump

See the **Parts** section starting on page 32 for all part identification references in the steps below.



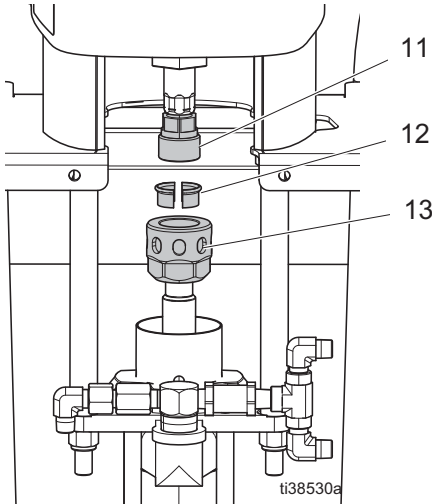
1. Follow the **Flushing and Cleaning** on page 20.
2. Stop the pump at the bottom of its stroke.
3. Follow the **Pressure Relief Procedure** on page 15.
4. Unplug the power cord (Z).
5. Disconnect the disinfectant hose and suction tube or the hopper.

**NOTE:** Before disconnecting the pump (9) from the motor (4), be sure to note the relative position of the pump's disinfectant outlet to the motor. If the motor does not require servicing, leave it attached to its mounting.

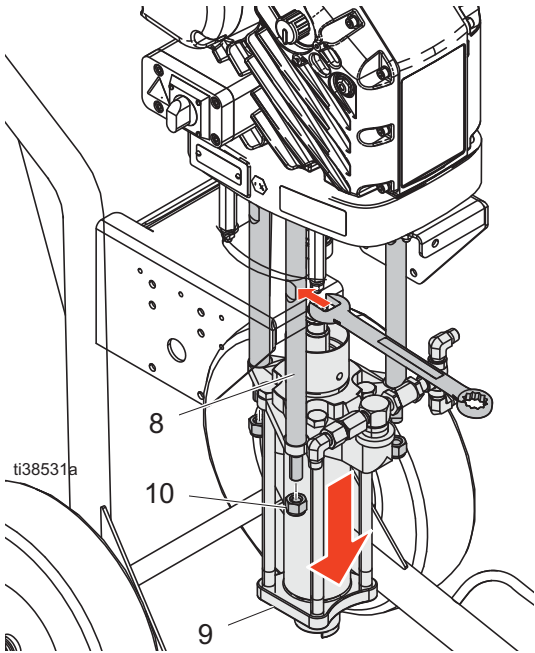


Use at least two people when lifting, moving, or disconnecting the pump. If disconnecting the pump, be sure to securely brace the pump, or have two people hold it while another person disconnects it.

6. Unscrew the coupling nut (13) from the connecting rod adapter (11). Remove the coupling collars (12); do not lose or drop them.



7. Hold the tie rod flats with a wrench to keep the rods (8) from turning. Unscrew the nuts (10). Remove the pump (9).

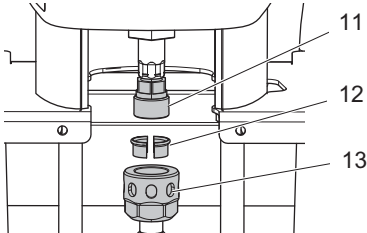


8. To service the pump, refer to your pump manual. To service the motor, see your motor manual. See **Related Manuals** on page 2.

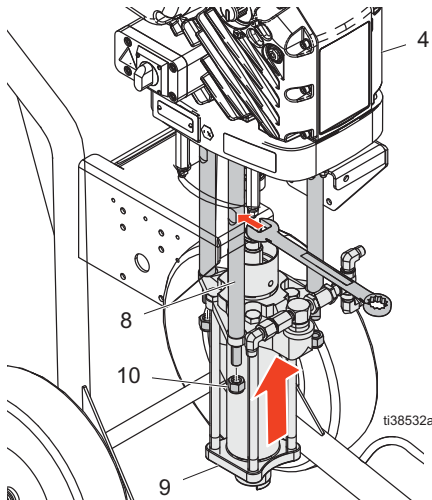
## Reconnect the Pump

See the **Parts** section starting on page 32 for all part identification references in the steps below.

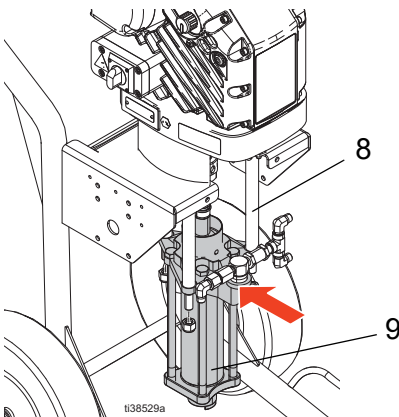
1. Screw the connecting rod adapter (11) to the motor shaft.



2. Screw the tie rods (8) into the motor (4). Using a wrench on the tie rod flats, torque to 50-60 ft-lb (68-81 N•m).



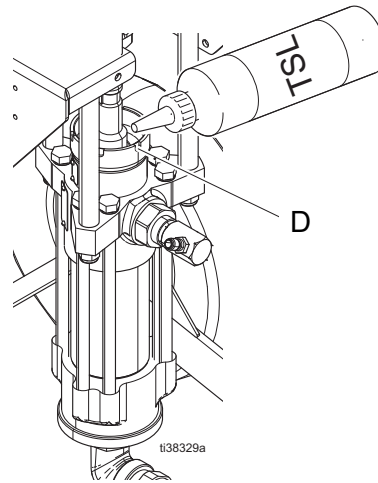
3. Make sure the coupling nut (13) and coupling collars (12) are in place on the rod.
4. Use at least two people to hold the pump while another person reconnects it to the motor. Position the pump as shown below. Place the pump (9) on the tie rods (8).



**NOTE:** When reconnecting the pump (9) to the motor (4), be sure to match the relative position of the pump's disinfectant outlet to the motor.

Use at least two people when lifting, moving, or connecting the pump. When connecting the pump, be sure to securely brace the pump, or have two people hold it while another person connects it.				

5. Screw the nuts (10) onto the tie rods (8) and torque to 50-60 ft-lb (68-81 N•m).
6. Screw the coupling nut (13) onto the connecting rod adapter (11) loosely. Hold the connecting rod adapter flats with a wrench to keep from turning.
7. Use an adjustable wrench to tighten the coupling nut (13). Torque to 90-100 ft-lb (121-135 N•m).
8. Reconnect all hoses. Fill the packing nut (D) 1/3 full of Graco Throat Seal Liquid.

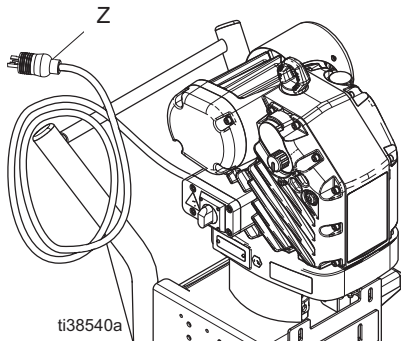


9. Turn on the electric motor. Run the pump slowly to ensure that it operates properly.

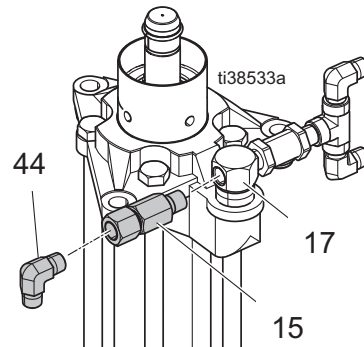
## Replace the Rupture Disc Assembly



1. Follow the **Pressure Relief Procedure** on page 15 and unplug the power cord (Z)



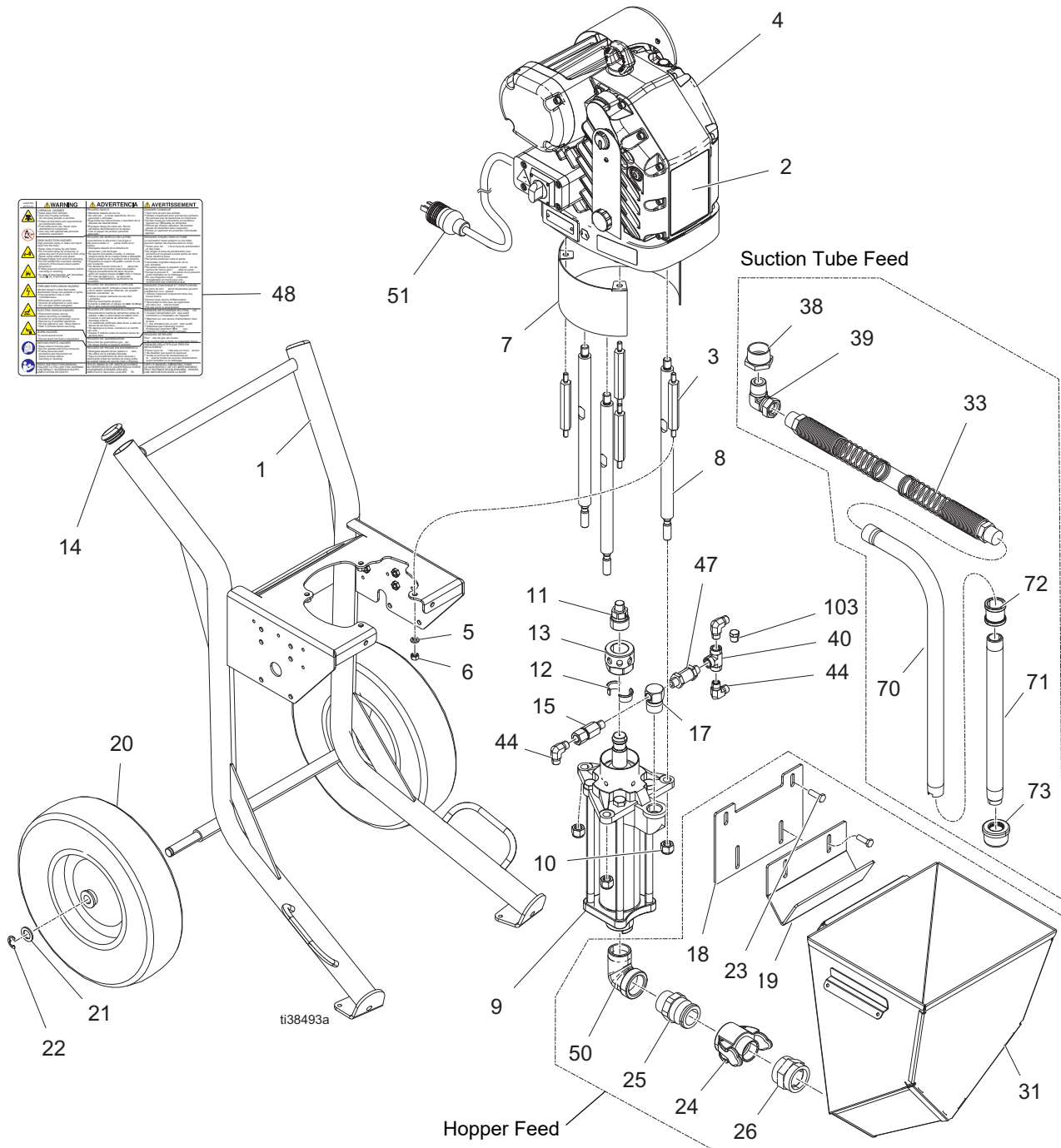
2. Remove elbow (44) from rupture disc assembly (15).
3. Remove rupture disc assembly (15) from fitting (17).
4. Install new rupture disc assembly into fitting (17). Use compatible liquid thread sealant or PTFE tape on connection.
5. Reinstall elbow (44) and position as shown in the image.



# Parts

Model	Sprayer 273215 Qty.	4-Gun Manifold 273226 Qty.
273216	1	1
273217	1	2

## Sprayer (273215) Parts



## Sprayer (273215) Parts List

Ref.	Part	Description	Qty.	Ref.	Part	Description	Qty.
1	24Z852	CART, heavy duty, painted	1	26	124445	FITTING, coupling, 1-1/2 nptf, ss	1
2	19B547	LABEL, SaniSpray HP750	1	31	17E114	HOPPER, weldment, xtreme	1
3	19B619	SPACER, mounting, threaded, sst	4	33	214959	HOSE, coupled	1
4	273199	MOTOR, assy, SaniSpray	1	38	121239	BUSHING, 1.5 x 1 npt reducer, sst	1
5	103975	WASHER, lock	4	39	121245	FITTING, swivel, 1 x 1 npt	1
6	112913	NUT, hex	8	40	102901	TEE, pipe	1
7	15K296	SPACER, painted	1	41	206994	FLUID, TSL 8 oz bottle	1
8	19B621	ROD, tie, sst	3	42	235208	FITTING, union, swivel	1
9	247599	PUMP	1	44	127947	FITTING, elbow, male, 90 deg.	3
10	102216	NUT, lock	3	47	19B639	VALVE, check, 3/8, male x male	1
11	15H371	ADAPTER, m38 x 2	1	48▲	25T414	LABEL, warning	1
12	184130	COLLAR, coupling	2	49	17K431	KIT, error code labels, translated	1
13	19B628	NUT, coupling	1	50	EQ1582	FITTING, elbow, street, 1-1/2 npt, ss	1
14	113361	CAP, tube, round	2	51	17U928	CORD, power, l6-30p	1
15	273220	HOUSING, rupture disc, assembly	1	70	19B630	TUBE, suction	1
17	19B638	FITTING, elbow, 90 degree, reducing	1	71	19B629	TUBE, intake	1
18	19B627	BRACKET, hopper, upper, painted	1	72	123996	COUPLING, 1 in. npt, ss	1
19	19B624	BRACKET, hopper, painted	1	73	187147	STRAINER, inlet	1
20	113362	WHEEL, semi-pneumatic	2	103	110740	PLUG, pipe	1
21	154628	WASHER	2				
22	113436	RING, retaining	2				
23	17V628	SCREW, cap, hex head	4				
24	19B620	FITTING, cam and groove, sst	1				
25	19B625	FITTING, cam/groove, 1.5m, 1-1/2 npt	1				

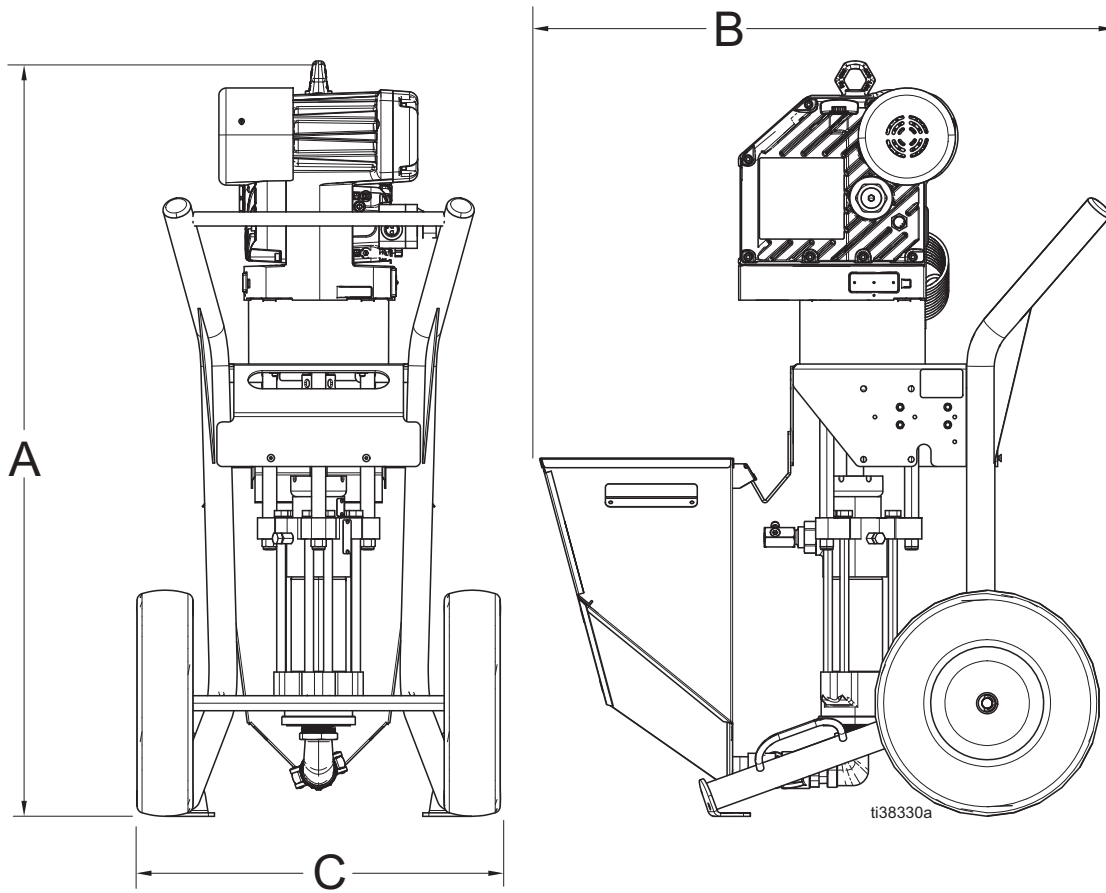
▲ Replacement safety labels, tags, and cards are available at no cost.



### 4-Gun Manifold (273226) Parts List

Ref.	Part	Description	Qty.	Ref.	Part	Description	Qty.
101	108673	TEE, street	4	108	25R880	KIT, tip, seat, hp, LP (617), LP (621)	4
102	235208	FITTING, union, swivel	3	109	LP723	TIP, spray, LP (723)	4
103	110740	PLUG, pipe	1	110	240797	HOSE, coupled, 3/8 in. x 50 ft	1
104	235992	VALVE, ball	4	111	223771	HOSE, cpld, 1/4 in. x 100 ft	12
105	070408	SEALANT, pipe, sst	1	112	19Y494	HOSE, cpld, 1/8 in. x 4-1/2 ft	4
106	25R874	GUN, SaniSpray hp	4	113	121907	FITTING, nipple, hex, 1/4 npt, sst, swv	8
107	26B143	EXTENSION, tip, 15 in., e-n, assy	4	114	LP631	TIP, spray, LP (631)	4

# Dimensions



Ref.		Dimensions
A	Height	50.0 in. (1.27 m)
B	Depth	30.0 in. (0.76 m)
C	Width	26.0 in. (0.66 m)



# Technical Specifications


<b>SaniSpray HP 750 Sprayer</b>		
	<b>US</b>	<b>Metric</b>
Maximum Disinfectant Working Pressure	1150 psi	79 bar, 7.9 MPa
Stroke Length	4.75 in.	120 mm
Maximum Continuous Cycle Rate	33 cycles per minute	
Maximum Tip Size	0.031 in.	
Wetted Parts	stainless steel, PTFE, acetal, UHMWPE, anodized aluminum, fluoroelastomer, urethane, nylon	
Maximum Disinfectant Temperature	120 °F	50 °C
Operating Temperature Range	23 to 120 °F	-5 to 50 °C
Input Voltage	200-240 VAC, single phase, 50/60 Hz	
Input Current	20 A maximum	
Minimum Recommended Generator Size	5 kW	
Oil Capacity	1.0 to 1.2 quarts	0.9 to 1.1 liters
Oil Specification	Graco part number 16W645 silicone-free ISO 220 synthetic EP gear oil	
<b>Weight</b>		
273215 - SaniSpray HP 750	308 lb	140 kg
<b>Sound Emissions for Normal Operation (&lt;20 cpm)</b>		
Sound Pressure	87 dBa	
Sound Power*	78 dBa	
* Sound power levels were tested per ISO 3744		
<b>Inlet / Outlet Sizes</b>		
Disinfectant Inlet Sizes	1-1/2 in. npt(f)	
Disinfectant Outlet Size	1 in. npt(f) to 3/8 in. npt(m) adapter	

## Recycling and Disposal

### End of Product Life

At the end of the product's useful life, dismantle and recycle it in a responsible manner.

- Follow the **Pressure Relief Procedure** on page 15.
- Drain and dispose of fluids according to applicable regulations. Refer to the material manufacturer's Safety Data Sheet.

- Remove motors, circuit boards, and other electronic components. Recycle according to applicable regulations.
  - Do not dispose of electronic components with household or commercial waste.
- 
- Deliver remaining product to a recycling facility.

## California Proposition 65

### CALIFORNIA RESIDENTS

 **WARNING:** Cancer and reproductive harm – [www.P65warnings.ca.gov](http://www.P65warnings.ca.gov).

# Graco Warranty

Graco warrants all equipment referenced in this document which is manufactured by Graco and bearing its name to be free of defects in material and workmanship on the date of sale by an authorized Graco distributor to the original purchaser for use. Graco will, for a period of ninety (90) days from the date of sale, provide repair parts for equipment determined by Graco to be defective. This warranty applies only when the equipment is installed, operated and maintained in accordance with Graco's written recommendations.

This warranty does not cover, and Graco shall not be liable for general wear and tear, or any malfunction, damage or wear caused by faulty installation, misapplication, abrasion, corrosion, inadequate or improper maintenance, negligence, accident, tampering, or substitution of non-Graco component parts. Nor shall Graco be liable for malfunction, damage or wear caused by the incompatibility of Graco equipment with structures, accessories, equipment or materials not supplied by Graco, or the improper design, manufacture, installation, operation or maintenance of structures, accessories, equipment or materials not supplied by Graco.

**THIS WARRANTY IS EXCLUSIVE, AND IS IN LIEU OF ANY OTHER WARRANTIES, EXPRESS OR IMPLIED, INCLUDING BUT NOT LIMITED TO WARRANTY OF MERCHANTABILITY OR WARRANTY OF FITNESS FOR A PARTICULAR PURPOSE.**

Graco's sole obligation and buyer's sole remedy for any breach of warranty shall be as set forth herein. The buyer agrees that no other remedy (including, but not limited to, incidental or consequential damages for lost profits, lost sales, injury to person or property, or any other incidental or consequential loss) shall be available. Any action for breach of warranty must be brought within two (2) years of the date of sale.

**GRACO MAKES NO WARRANTY, AND DISCLAIMS ALL IMPLIED WARRANTIES OF MERCHANTABILITY AND FITNESS FOR A PARTICULAR PURPOSE, IN CONNECTION WITH ACCESSORIES, EQUIPMENT, MATERIALS OR COMPONENTS SOLD BUT NOT MANUFACTURED BY GRACO.**

These items sold, but not manufactured by Graco (such as electric motors, switches, hose, etc.), are subject to the warranty, if any, of their manufacturer. Graco will provide purchaser with reasonable assistance in making any claim for breach of these warranties.

**IN NO EVENT WILL GRACO BE LIABLE FOR INDIRECT, INCIDENTAL, SPECIAL OR CONSEQUENTIAL DAMAGES RESULTING FROM GRACO SUPPLYING EQUIPMENT HEREUNDER, OR THE FURNISHING, PERFORMANCE, OR USE OF ANY PRODUCTS OR OTHER GOODS SOLD HERETO, WHETHER DUE TO A BREACH OF CONTRACT, BREACH OF WARRANTY, THE NEGLIGENCE OF GRACO, OR OTHERWISE.**

## **FOR GRACO NORTH AMERICA CUSTOMERS**

Please call 1-844-241-9499 or visit [www.graco.com/techsupport](http://www.graco.com/techsupport) regarding any potential defect in equipment under warranty. If the claimed defect is verified, Graco will either, at its discretion, send repair parts for owner installation or replace the product, free of charge. Warranty claims and/or service for this product are not administered by Graco's distributors or service centers for Graco paint equipment.

## **FOR GRACO EUROPE, MIDDLE EAST AND AFRICA CUSTOMERS**

Please contact your regional service center or authorized distributor to administer a warranty claim.

## **FOR GRACO CANADA CUSTOMERS**

The Parties acknowledge that they have required that the present document, as well as all documents, notices and legal proceedings entered into, given or instituted pursuant hereto or relating directly or indirectly hereto, be drawn up in English. Les parties reconnaissent avoir convenu que la rédaction du présente document sera en Anglais, ainsi que tous documents, avis et procédures judiciaires exécutés, donnés ou intentés, à la suite de ou en rapport, directement ou indirectement, avec les procédures concernées.

# Graco Information

For the latest information about Graco products, visit [www.graco.com](http://www.graco.com).

For patent information, see [www.graco.com/patents](http://www.graco.com/patents).

TO PLACE AN ORDER, contact your Graco distributor or call to identify the nearest distributor.

Phone: 612-623-6921 or Toll Free: 1-800-328-0211, Fax: 612-378-3505

*All written and visual data contained in this document reflects the latest product information available at the time of publication. Graco reserves the right to make changes at any time without notice.*

Original instructions. This manual contains English. MM 3A7939

**Graco Headquarters:** Minneapolis

**International Offices:** Belgium, China, Japan, Korea

**GRACO INC. AND SUBSIDIARIES • P.O. BOX 1441 • MINNEAPOLIS MN 55440-1441 • USA**  
**Copyright 2020, Graco Inc. All Graco manufacturing locations are registered to ISO 9001.**

[www.graco.com](http://www.graco.com)  
Revision A, July 2020