

# SAVILINO

CUSTOMIZING YOUR APRON



# HOW TO CUSTOMIZE AN APRON

USE THIS AS YOUR REFERENCE FOR BOTH CUSTOMIZED AND BESPOKE APRONS.  
ONCE YOUR CONTACT FORM HAS BEEN SUBMITTED, WE WILL ARRANGE YOUR FREE CONSULTATION.  
MINIMUM 20 UNITS.

## Step 1 PICK A STYLE

LOOK THROUGH THE FOLLOWING PAGES AT OUR CURRENT COLLECTIONS AND DECIDE WHICH APRON/S YOU WOULD LIKE TO CUSTOMIZE

## Step 2 SELECT MATERIALS

NEXT, SELECT THE MATERIALS AND COLORS YOU ARE INTERESTED IN AND WE WILL DISCUSS THE VARIOUS OPTIONS WITH YOU

## Step 3 SELECT HARDWARE

PICK WHICH HARWARE COLOR YOU LIKE THE MOST

## Step 4 SELECT LEATHER

WHEN AN APRON HAS LEATHER DETAILING YOU CAN ALSO CHOOSE THE COLOR OF LEATHER YOU WOULD LIKE TO HAVE

## Step 5 CONTACT US

SUBMIT YOUR CONTACT FORM AND WE WILL REACH OUT WITHIN 24 HOURS TO ARRANGE YOUR FREE CONSULTATION. OUR DESIGN TEAM WILL WILL HELP YOU WITH YOUR SELECTIONS, MAKE RECOMMENDATIONS, AND ANSWER ANY QUESTIONS YOU MAY HAVE.





# Step 1 PICK A STYLE

# BASELINE

COLLECTION



### TERMS:

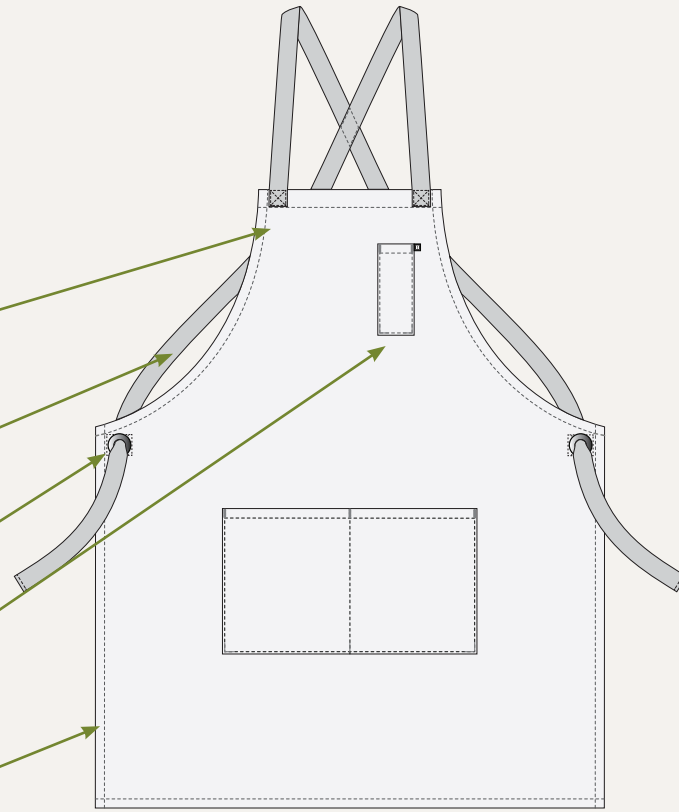
APRON SHELL

STRAP COLOR

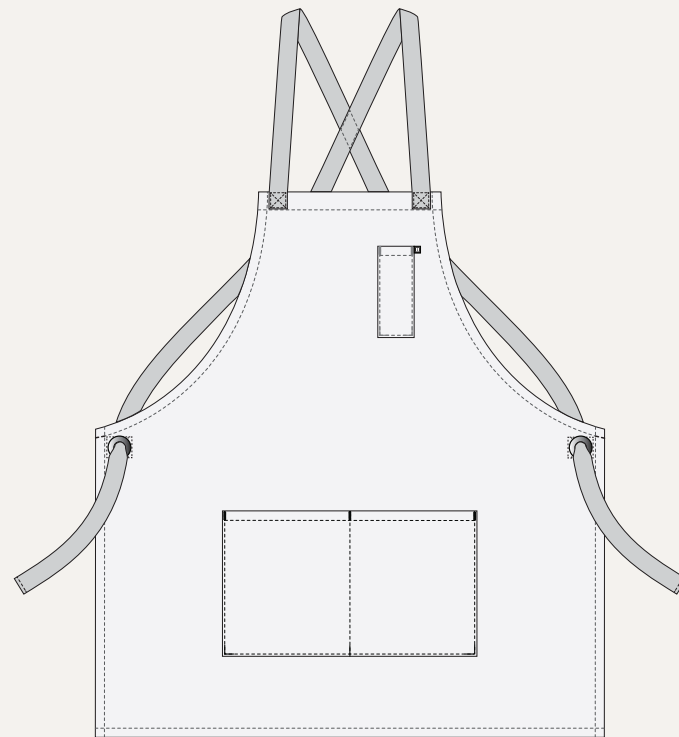
HARDWARE COLOR

PATCH POCKET

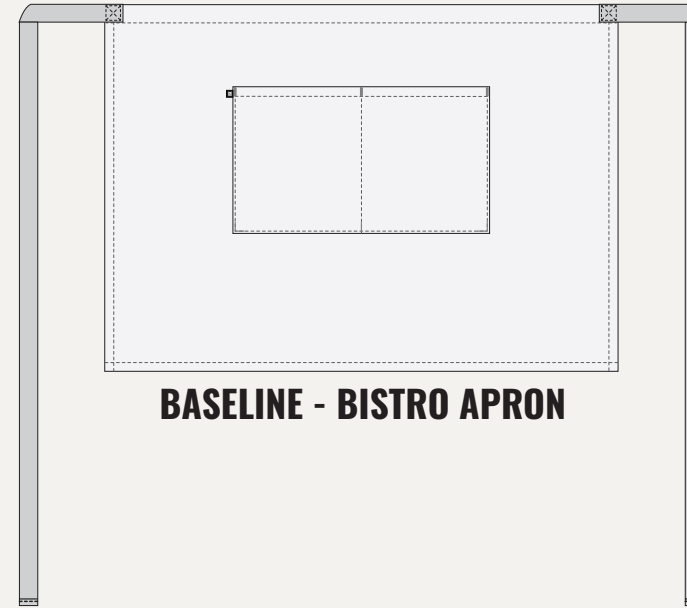
STITCH COLOR



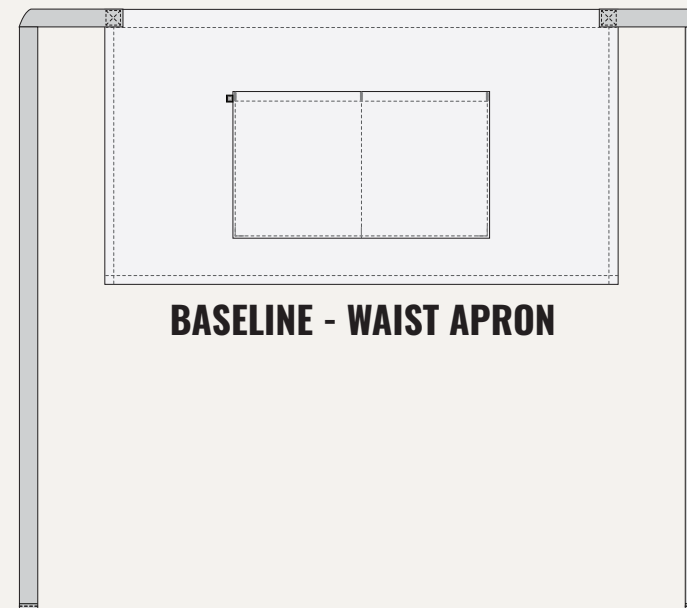
**BASELINE - BIB APRON**



**BASELINE - CRAFTSMAN APRON**



**BASELINE - BISTRO APRON**



**BASELINE - WAIST APRON**



# Step 1 PICK A STYLE

**WILSON**  
COLLECTION

## TERMS:

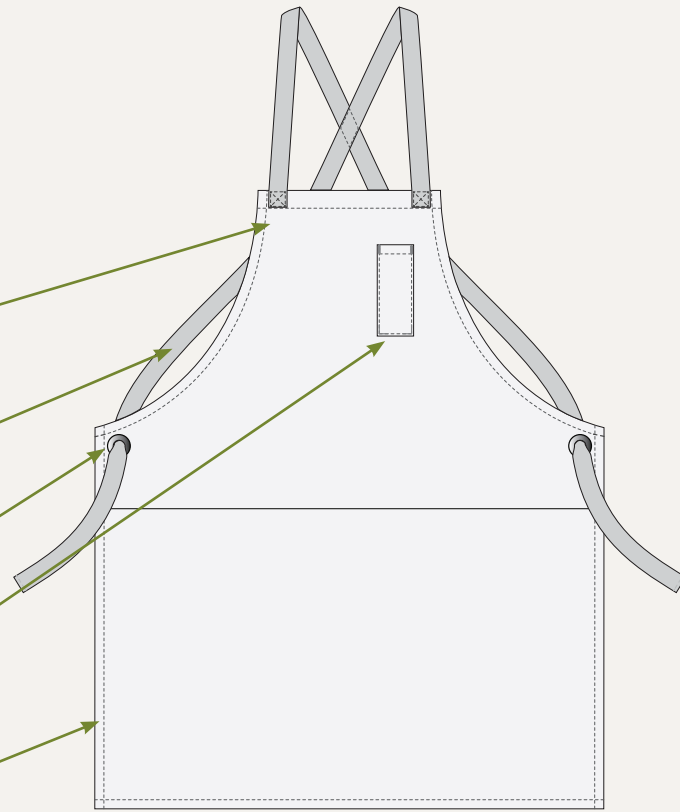
APRON SHELL

STRAP COLOR

HARDWARE COLOR

PATCH POCKET

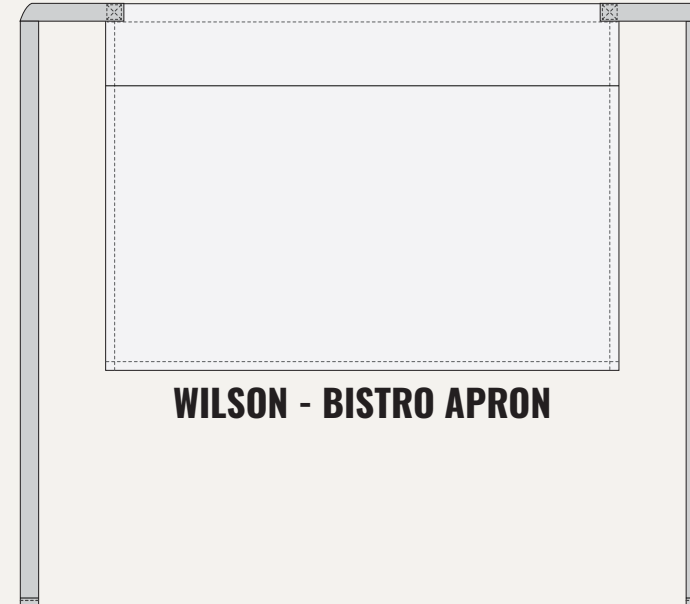
STITCH COLOR



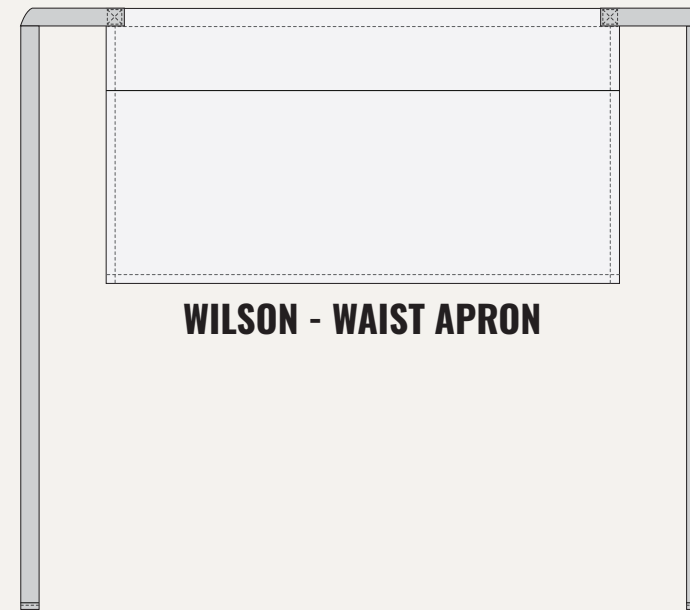
**WILSON - BIB APRON**



**WILSON - CRAFTSMAN APRON**



**WILSON - BISTRO APRON**



**WILSON - WAIST APRON**





# Step 1 PICK A STYLE

# ÅKERFELDT

COLLECTION

## TERMS:

UPPER FACING

HARDWARE COLOR

PIPING

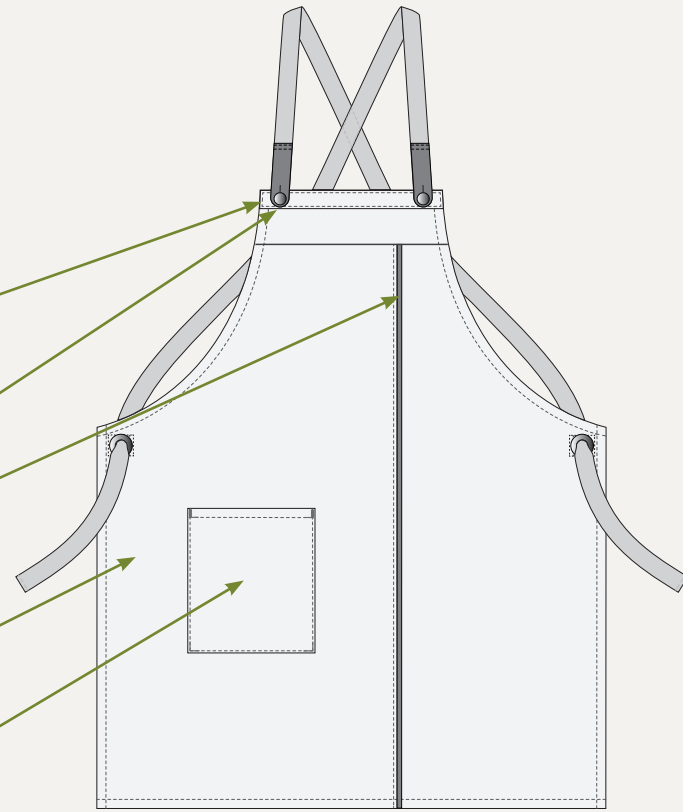
APRON SHELL

PATCH POCKET

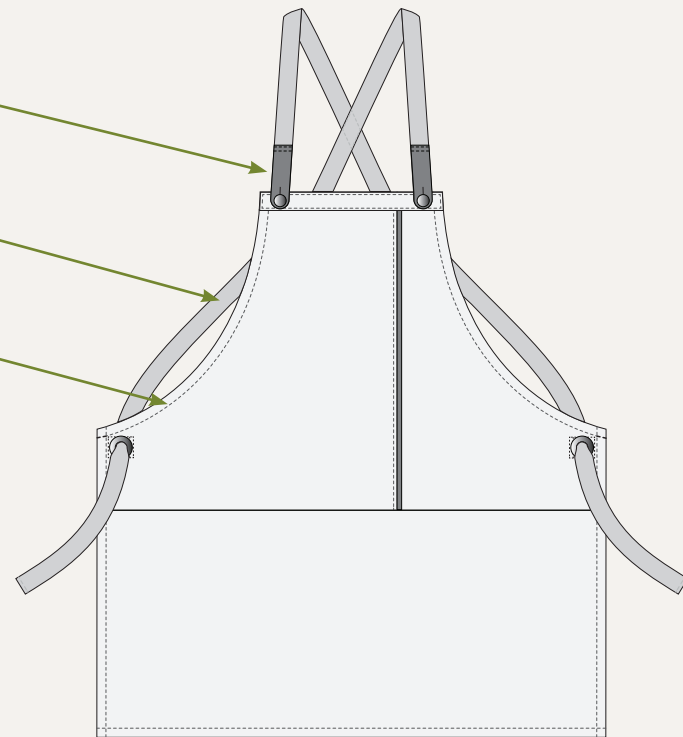
LEATHER COLOR

STRAP COLOR

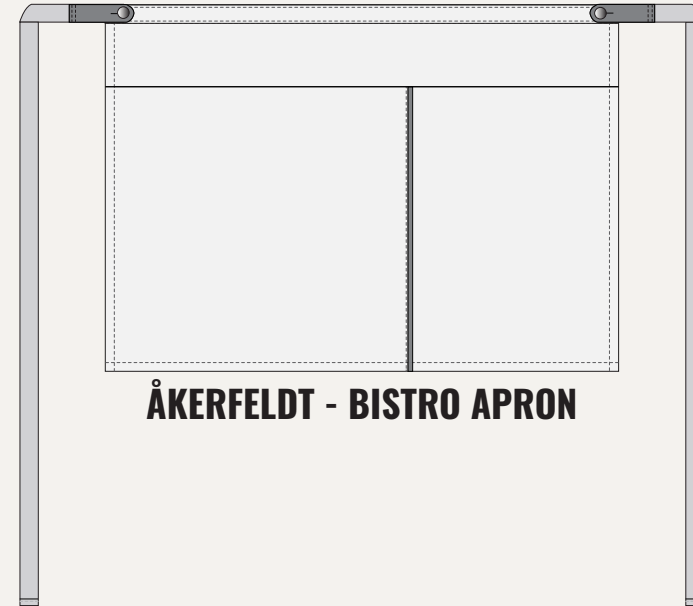
STITCH COLOR



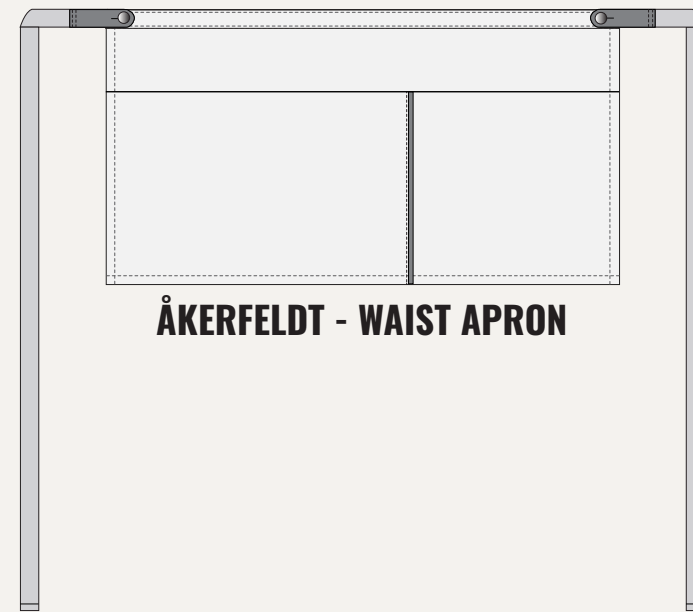
ÅKERFELDT - BIB APRON



ÅKERFELDT - CRAFTSMAN APRON



ÅKERFELDT - BISTRO APRON



ÅKERFELDT - WAIST APRON





# Step 1 PICK A STYLE

# MYUNG COLLECTION

TERMS:

UPPER FACING

HARDWARE COLOR

POCKET BINDING

APRON SHELL

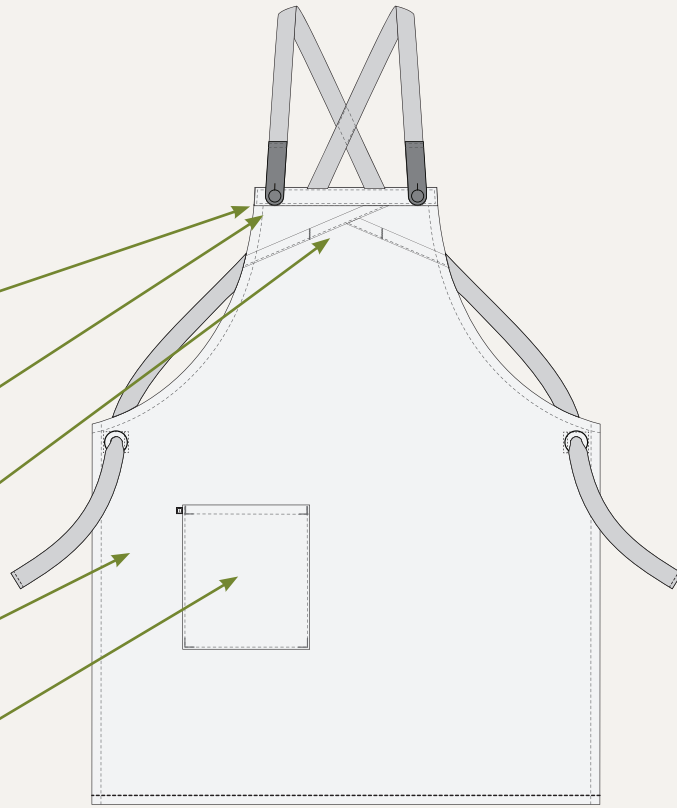
PATCH POCKET

LEATHER COLOR

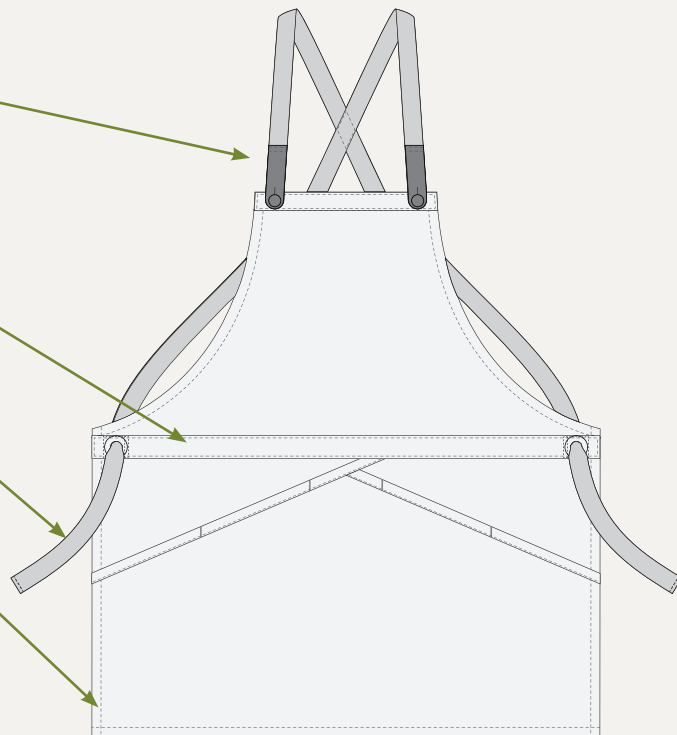
WAISTBAND

STRAP COLOR

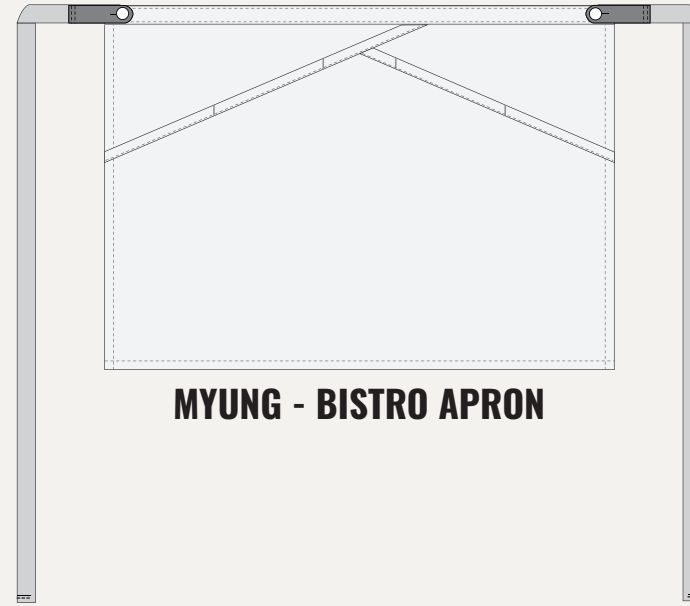
STITCH COLOR



MYUNG - BIB APRON



MYUNG - CRAFTSMAN APRON



MYUNG - BISTRO APRON



MYUNG - WAIST APRON





# CANVAS

## Step 2 SELECT MATERIALS

	Briquette		Brown		Burgundy
	Steel Grey		Tobacco		Red
	Light Grey		Caramel		Nautical Red
	Navy		Acorn		Black
	Denim		Gold		White
	Royal		Harvest Tan		Red DWR
	Sea Canvas		Khaki		Rust DWR
	Moss		Desert		Ranch Tan DWR
	Hunter		Stone		Navy DWR
	Pine		Natural		Black DWR



100% Cotton ◇ 10 oz. ◇ Preshrunk  
More Colors Available Upon Request





## Step 2 SELECT MATERIALS

P/C TWILL

	Black		French Blue		Burgundy
	Charcoal		Chocolate		Cardinal
	Heather Grey		Tan		Red
	Thunder Grey		Olive		Rust
	Silver		Olive Drab		Nautical Red
	Dark Navy		Forest Green		Gold
	Navy		Spruce		Buttercup
	Heather Blue		Sax Teal		White
	Cobalt Blue		Purple		Natural

65% Polyester 35% Cotton ◇ 7.5 oz. ◇ Preshrunk ◇ Crease Resistant Finish



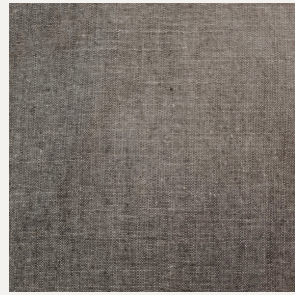
More Colors Available Upon Request



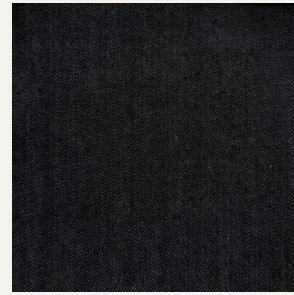


## Step 2 SELECT MATERIALS

# DENIM



Cross-Black  
Chambray



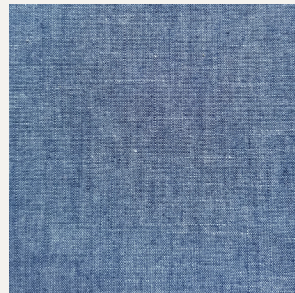
Mexico  
Black



Cross-Grey  
Chambray



Crosshatch  
Indigo



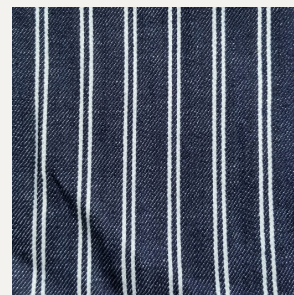
Cross-Blue  
Chambray



Turkey Bossa  
Dark Indigo



Railroad  
Stripe



Double-Track  
Striped



More Colors Available Upon Request





Step 2 **SELECT MATERIALS**

# BULL DENIM

	Black		Truffle		Midnight
	Charcoal		Stone		Navy
	Mercury		Vanilla		Federal
	Sable		White		Ruby
	Ranch Tan		Butter		Cardinal
	Coffee		Mustard		Concord
	Coin		Jalapeno		Claret
	Wheat		Olive		Heather
	Khaki		Spruce		Tea Rose

100% Cotton ◇ 10 oz. ◇ Preshrunk ◇ Water/Stain Repellant Finish

More Colors Available Upon Request



# HERRINGBONE

	Coyote		Foliage
	Khaki		Charcoal
	Bark		Navy
	Stone		Black
	Natural		White
	Army Green		

100% Cotton ◇ 9 oz. ◇ Preshrunk

More Colors Available Upon Request

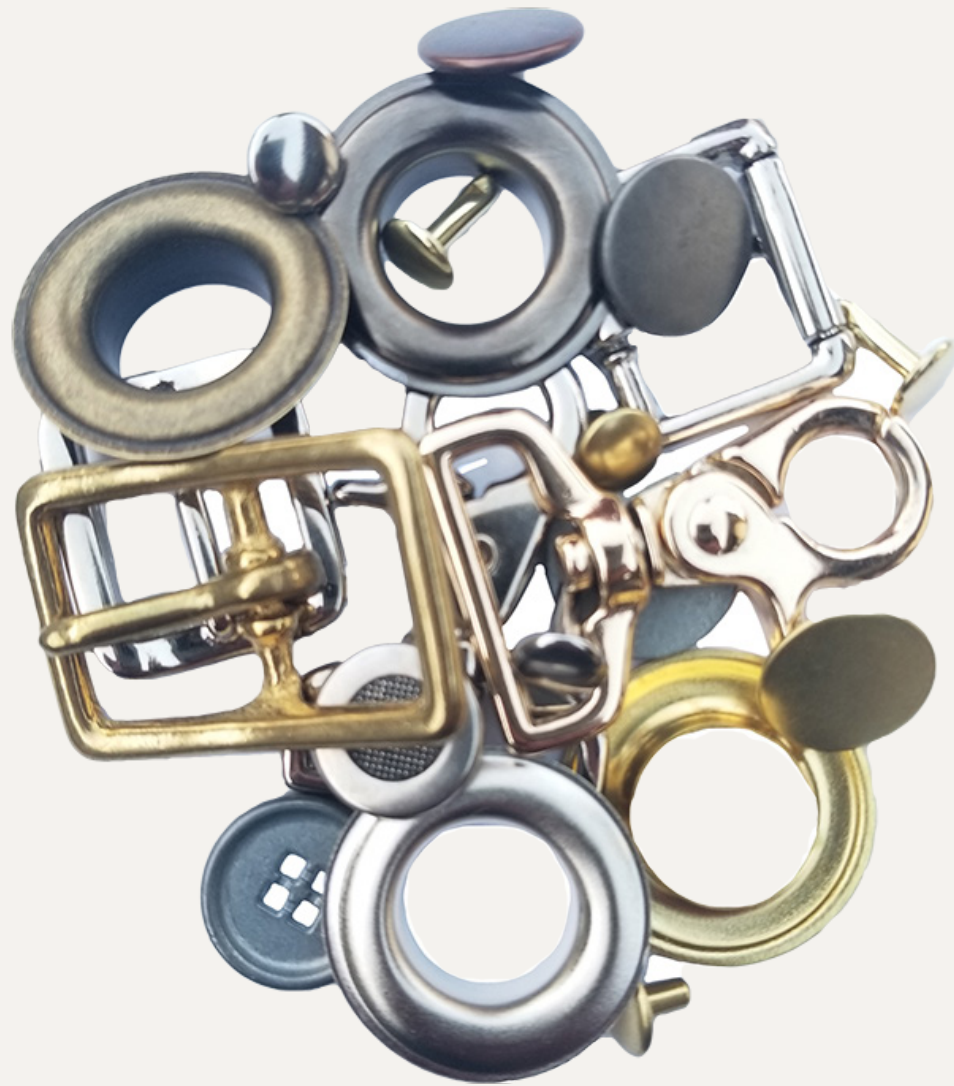




# HARDWARE

## Step 3 SELECT HARDWARE

There are many types of hardware that can be used to customize an apron. To keep it simple, we are focussing on the two most common pieces of hardware we use and the colors available for each. If you would like to explore other options, please reach out to us directly regarding your project and we will be happy to help.



### JEAN TACK BUTTONS



BRASS



ANTQ. BRASS



COPPER



ANTQ. COPPER



NICKEL



ANTQ. NICKEL



BLACK

### GROMMETS



BRASS



ANTIQUÉ BRASS



NICKEL



GUNMETAL



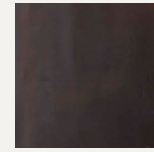
# LEATHER

## Step 4 SELECT LEATHER

Choose from these heavy boot & chap leathers for apron strap ends and other details. Availability of some colors will depend on current supply levels



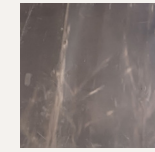
**ROUGHMAN** ◇ Distressed to have that old worn look



CHOCOLATE



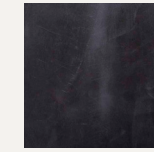
TOBACCO



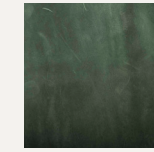
CARBON



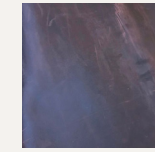
LT. CARBON



NAVY

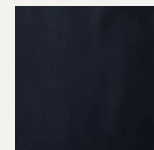


FOREST

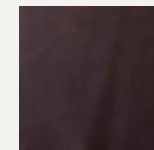


MERLOT

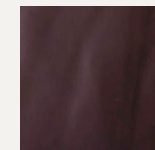
**OIL TAN** ◇ Beautiful full grain cow ideal for chaps. Provides ultimate protection for all weather conditions



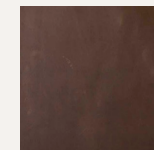
BLACK



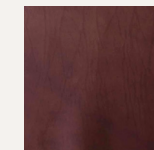
CHOCOLATE



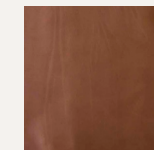
HERSHEY



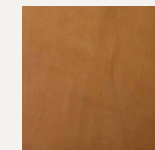
BROWN



CARAMEL



TAN

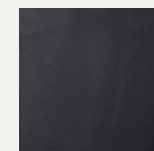


SUNRISE

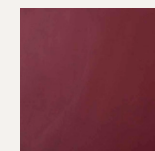
**DAKOTA** ◇ Has a slightly waxy surface and medium firm temper with a smooth tight grain



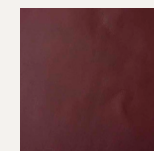
BLACK



NAVY



RED

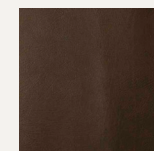


WINE

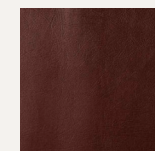
**KODIAK BULLHIDE** ◇ Medium to firm temper with a mild embossed print



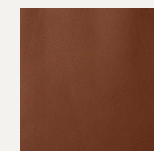
BLACK



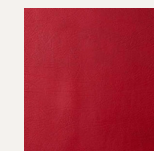
CHOCOLATE



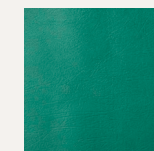
REDWOOD



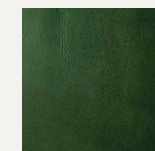
TOBACCO



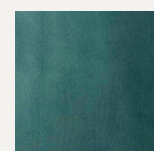
RED



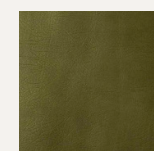
TURQUOISE



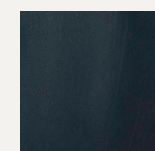
TEAL



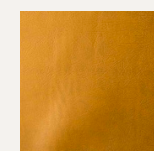
AQUA BLUE



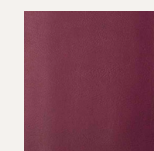
AVOCADO



NAVY



SUNRISE



GRAPE