

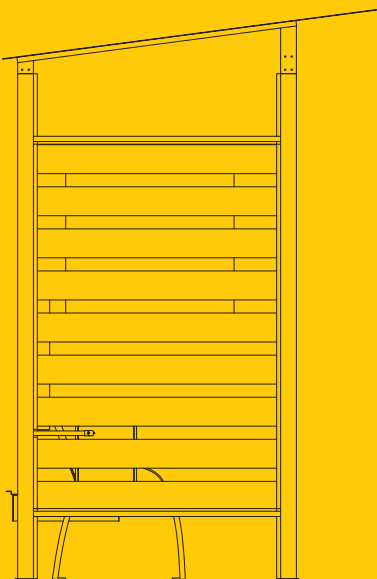
SELS

SMART ERA LIGHTING SYSTEMS



Mountain Solar Shelter

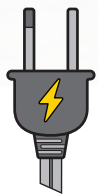
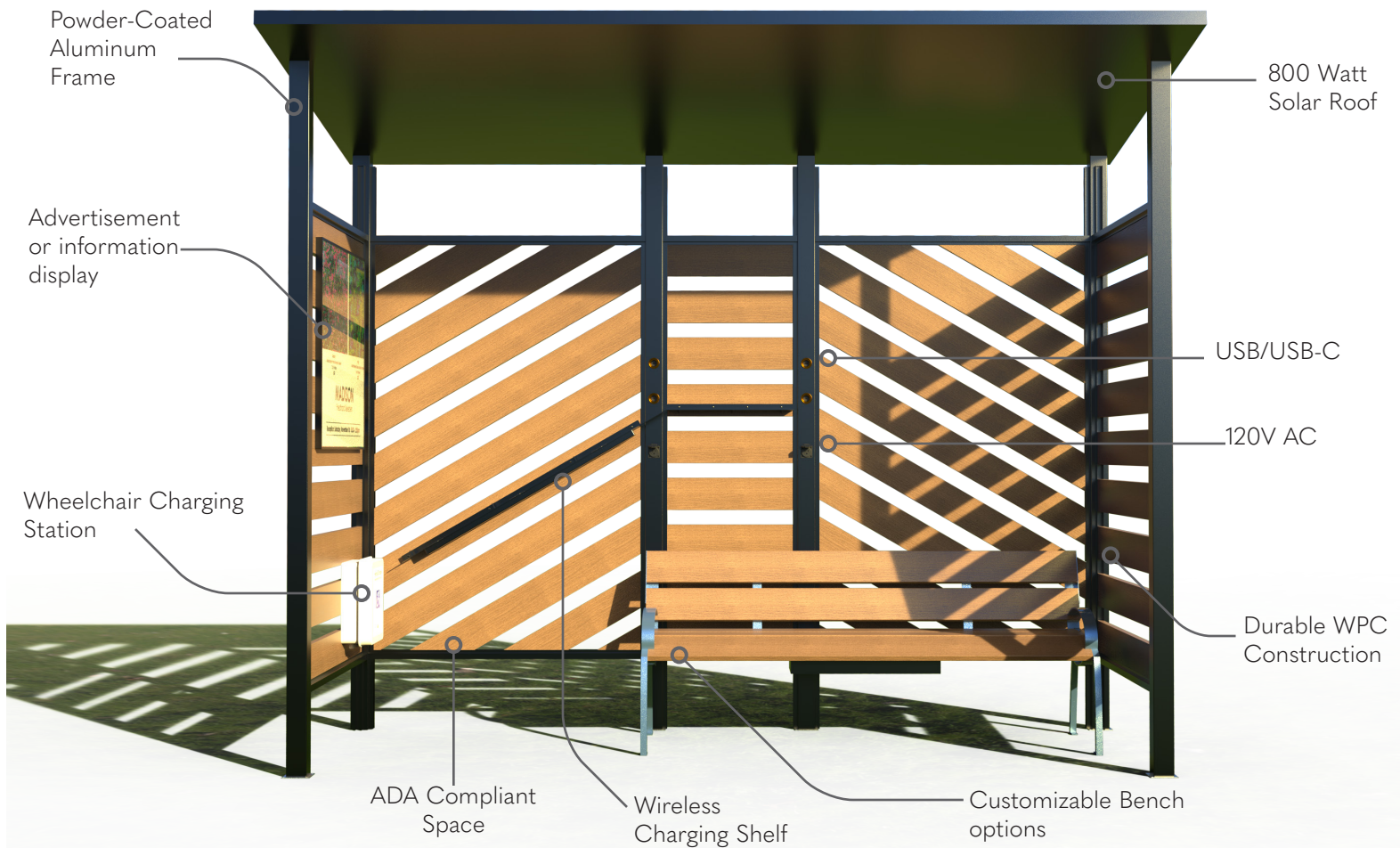
Wheel Chair Charging and Device Charging



The Mountain Shelter

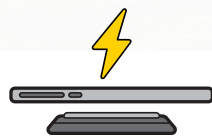
Natural Shelter System

Introducing the “Mountain Shelter,” a pioneering solar shelter designed and manufactured by our team. Crafted from durable WPC material, this innovative structure seamlessly integrates sustainability with functionality. Boasting three wireless chargers, two USB, and two USB-C ports, it caters to a variety of devices. Additionally, two 120-volt outlets accommodate larger electronics. What sets the Mountain Shelter apart is its industry-first wheelchair charging apparatus, promoting inclusivity on trails and in the wilderness. Tailored for the great outdoors, this shelter not only blends seamlessly with nature but also ensures a reliable power source for both personal devices and essential equipment, redefining the concept of sustainable and accessible wilderness amenities.



120V AC Charging

Plug in a Standard 120 V plug to charge or power larger devices.



Wireless Charging

State-of-the-art wireless charging for devices



Fully Programmable

Dimming and lighting schedule is customizable to customer needs. Monitor power usage on the web.

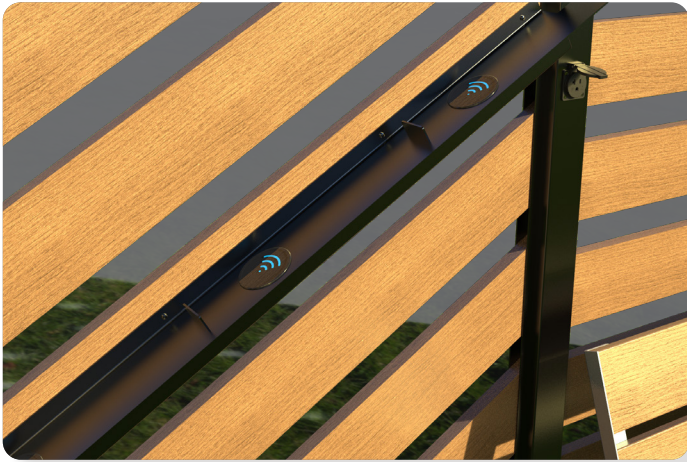


USB Charging

Plug in a USB cord to charge or power any device.

The Mountain Shelter

Natural Shelter System



WIRELESS CHARGING SHELF

A unique wireless charging shelf designed for user friendliness. The angle and phone stops ensure accurate placement and easy storage for temporary quick charging of devices.

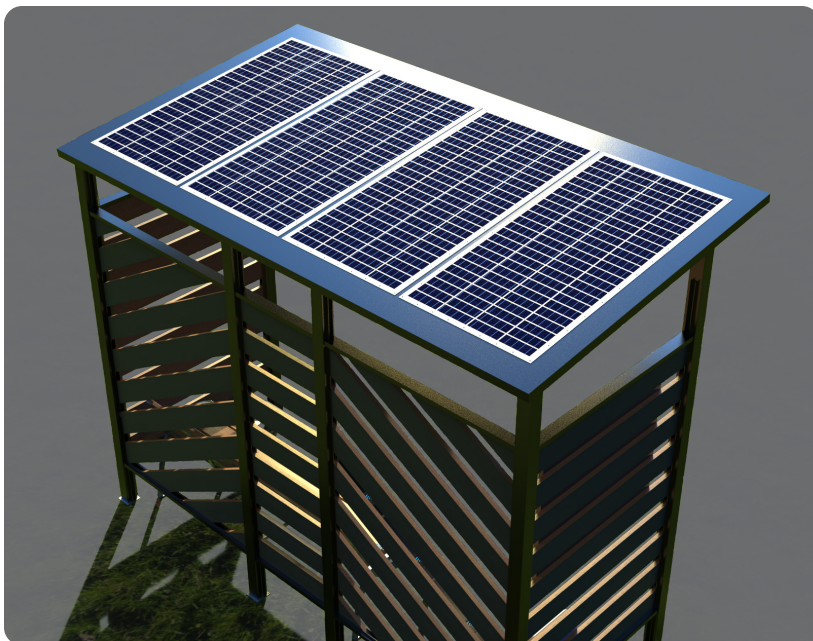
WHEELCHAIR CHARGING

SELS is proud to be one of the first companies to offer solar powered wheelchair charging. This is a dedicated ADA compliant space with universal charging.



SOLAR POWER GENERATION

Up to 800 watts of Solar Generation per unit. Angled roof allowing for optimal sun collection from any placement. The solar panels are ultra thin and secured to the roof structure by rivet all around their perimeter eliminating the chance of wind or weather damage.



The Mountain Shelter

Natural Shelter System

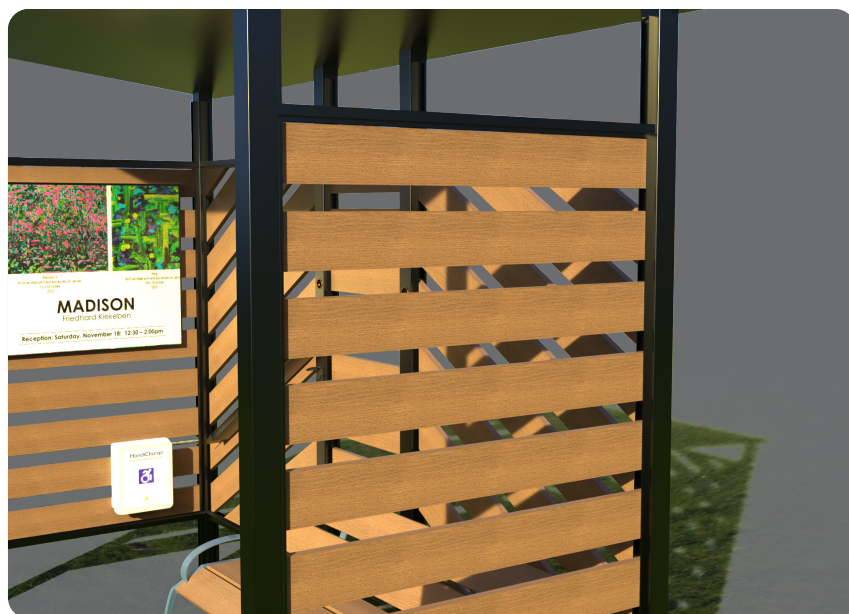
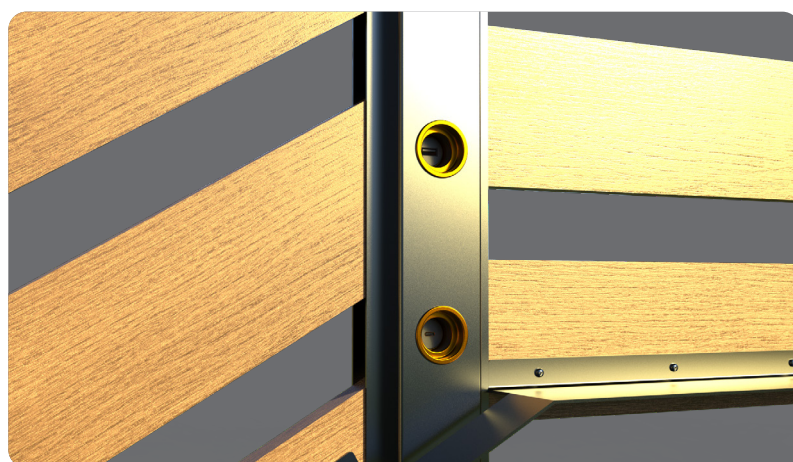


INFORMATION/ADVERTISEMENT DISPLAY

The Mountain Shelter comes with 24" x 36" lockable displays for information or advertisements. This allows you to bring utility and personality to your shelter.

USB AND USB-C PORTS

USB and USB-C charging ports accommodate modern devices by providing faster charging for people who have a bit more time to spend in the shelter. Fully water-proof and corrosion resistant.



DURABLE MATERIAL CONSTRUCTION

The Mountain Shelter is constructed using WPC and Powder Coated Aluminum. This guarantees longterm viability and high-resistance to corrosive forces like snow, wind, and sea-breeze. This allows you to utilize this smart solar shelter reliably for years to come without disadvantaging users.

The Mountain Shelter

Natural Shelter System

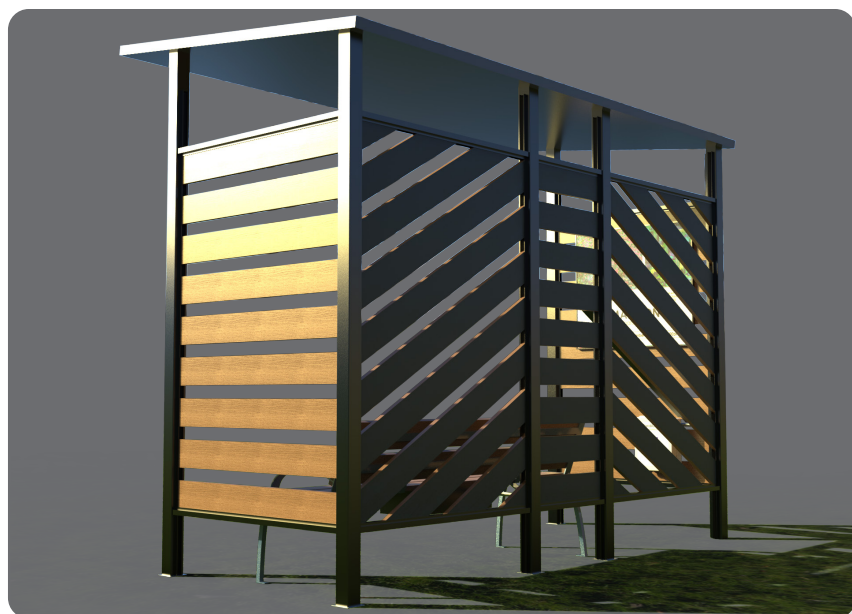
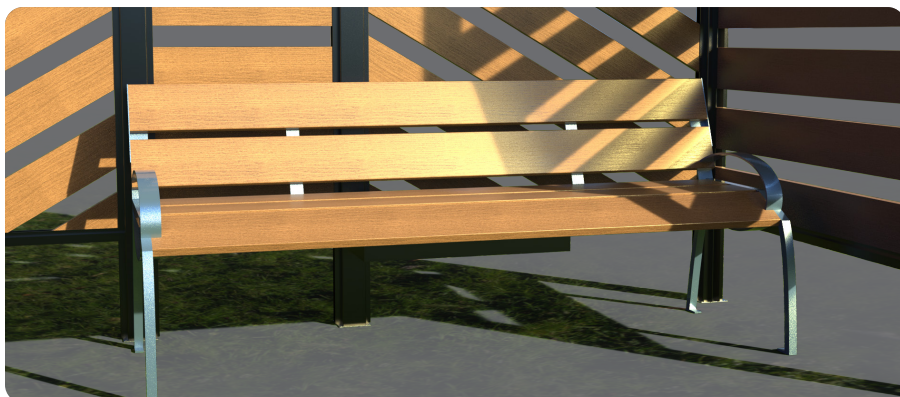


120V A/C OUTLETS

There are two 120V A/C outlets in the Mountain Shelter to add supplementary charging for larger devices or equipment. They can be used in a pinch for anything that can not use USB or wireless charging.

BENCH OPTIONS

We provide a variety of styles of bench to match the aesthetic sought after. The benches are constructed of the same WPC material used in the shelter.



SIMPLE INSTALLATION

The Mountain Shelter is designed to be effectively shipped and installed with everyday tools. This allows for speedy and straight forward installations on location. Panels are pre-made and the posts can be erected easily once the anchors are in place. These are the types of steps that has led SELS to be renowned for cost-effective installation.

The Mountain Shelter

Natural Shelter System

MODERN NATURAL DESIGN

The Mountain Shelter is designed to be a more natural addition to the SELS shelter catalog. Many shelters manufactured today fall into an industrial aesthetic meaning the only place they truly fit is in old fashioned cities. We are providing a fresh, sustainable shelter packed to the brim with modern solar-powered amenities.



Mountain Shelter Benefits:

Durable WPC Material: Crafted from Weather-Proof Composite material, ensuring resilience against various weather conditions, guaranteeing longevity.

Wireless Charging: Features three wireless chargers for convenient device charging without the need for cables or adapters.

Versatile Charging Options: Offers two USB and two USB-C plug-ins, accommodating a wide range of devices, providing flexibility for users.

Powerful Outlets: Equipped with two 120-volt outlets to support larger electronic devices, meeting the power needs of various equipment.

Industry-First Wheelchair Charging Apparatus: Pioneering inclusivity with a wheelchair charging apparatus, making it accessible and accommodating for all users.

Solar-Powered Sustainability: Utilizes solar energy for powering electronic devices, promoting eco-friendly practices and reducing dependence on conventional power sources.

Tailored for Trails and Wilderness: Designed to seamlessly blend with natural environments, fitting in on trails and enhancing the overall outdoor experience.

Reliable Outdoor Amenities: Ensures a reliable power source in the wilderness, providing a sheltered space with diverse charging options for both personal devices and essential equipment.