

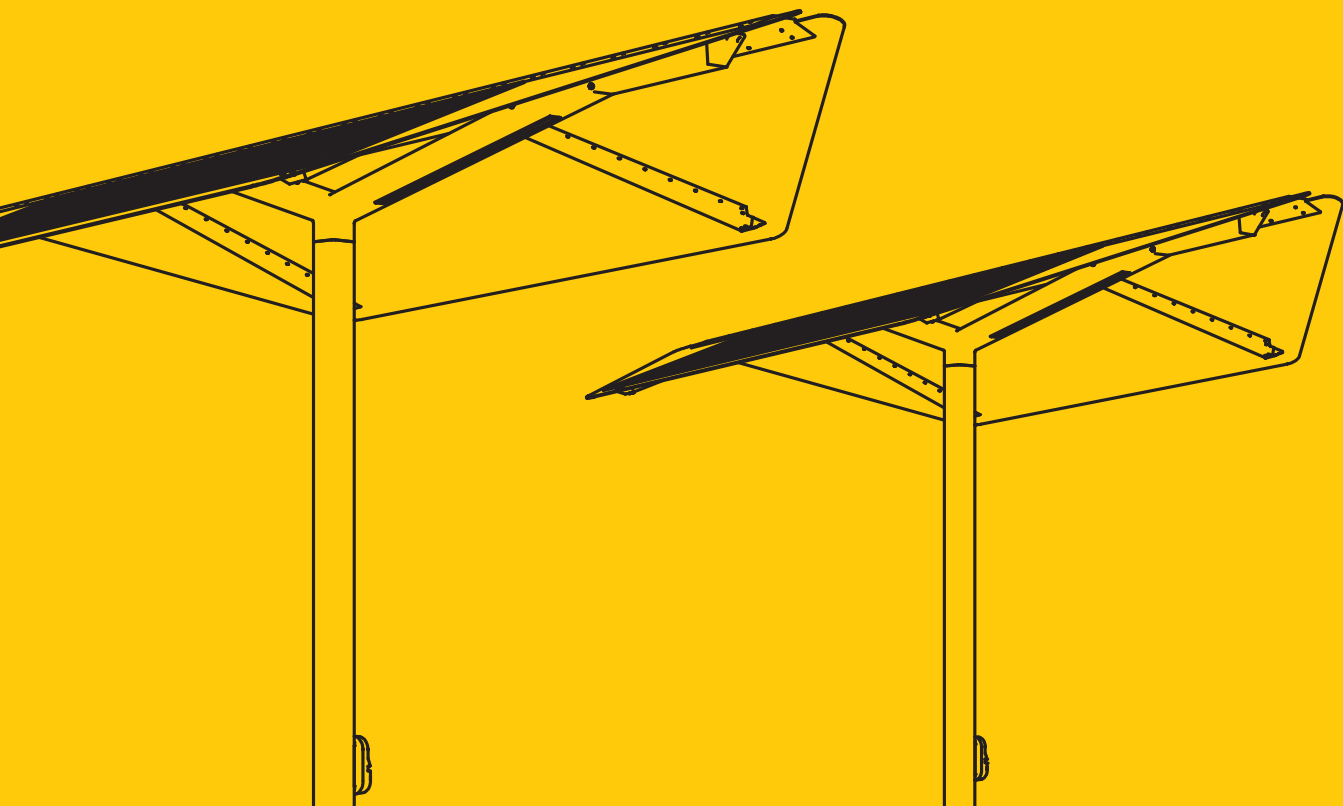
# SELs

SMART ERA LIGHTING SYSTEMS



## Single Post Shaded Seating

Solar Powered Shaded Seating

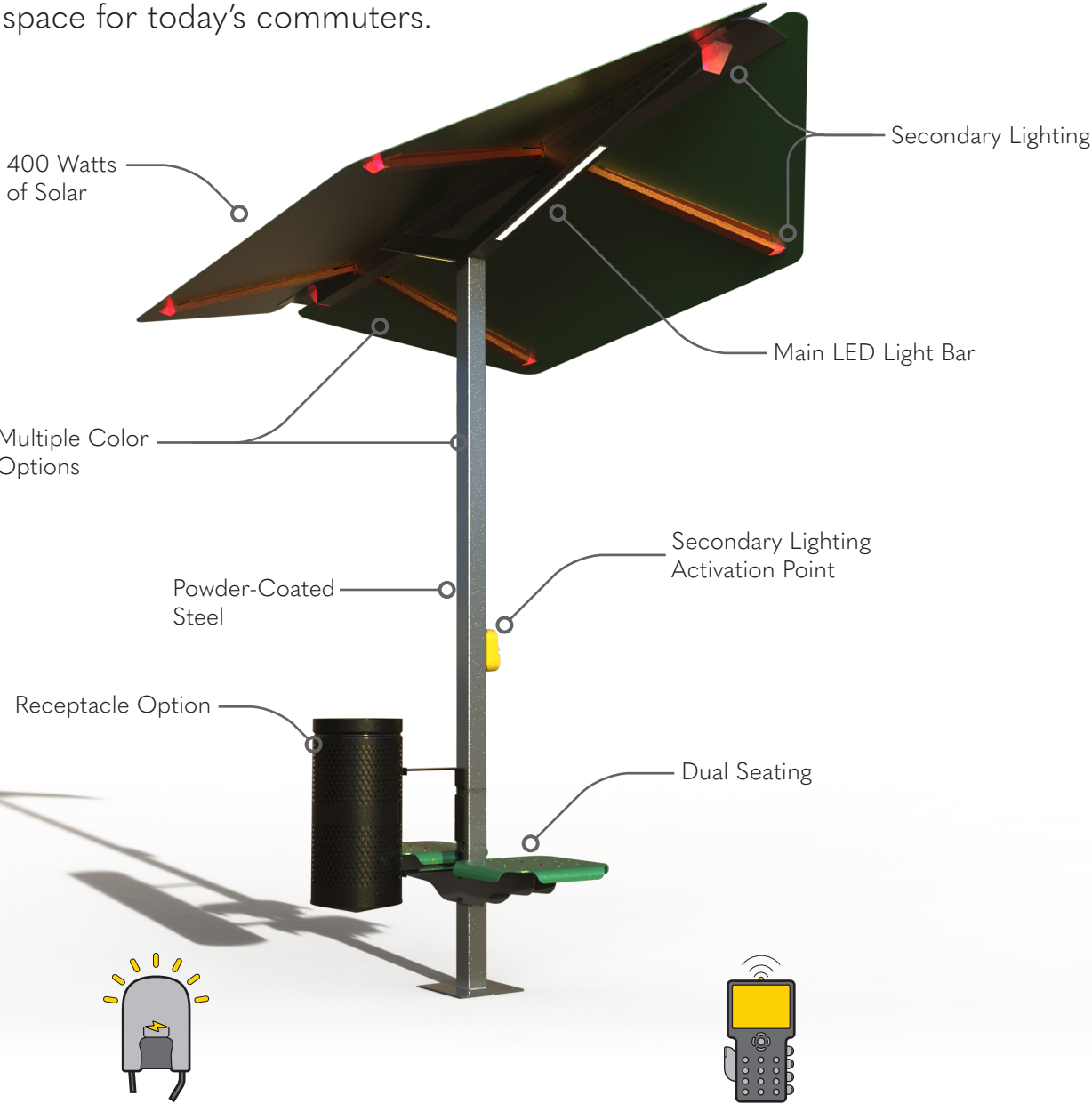


# The LEAF Cover

## Shaded Shelter System



Introducing SELS' innovative Single Post Modular Bus Shelter System—a modern solution reshaping transit stops. This system combines smart design and tech, going beyond the old bus stop look. With USB charging, lit interiors for night visibility, and a signal for bus drivers, it focuses on connecting, safety, and efficiency. Made tough for any weather, it stands strong. This system gives transit spots a modern twist, offering a comfy, functional space for today's commuters.



### LED Lighting

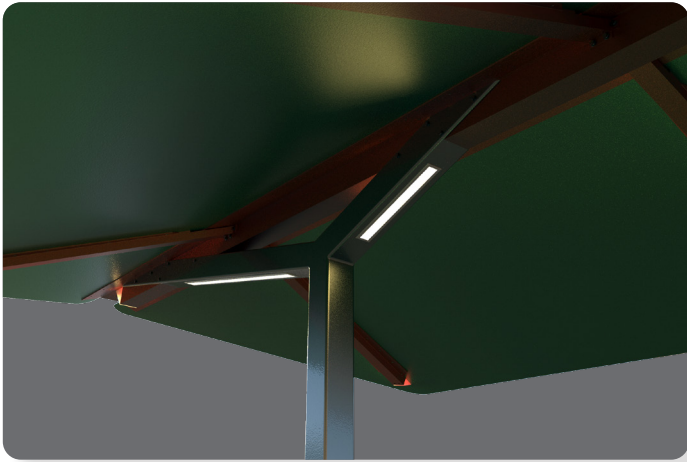
Lighting Color Options: 2200K - 5000K  
Lumen Options: 150 Lumens per Watt

### Fully Programmable

Dimming and lighting schedule is customizable to customer needs. Monitor power usage on the web.

# The LEAF Cover

## Shaded Shelter System

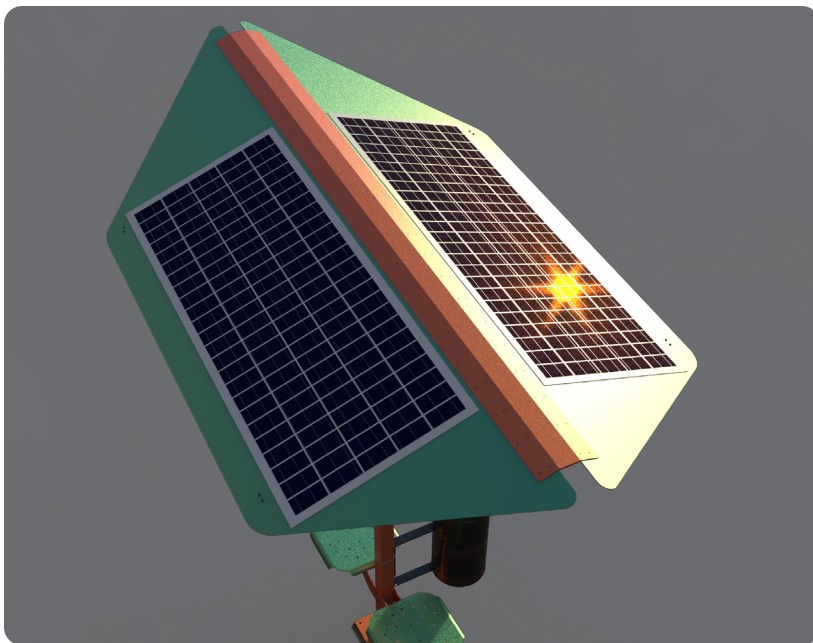
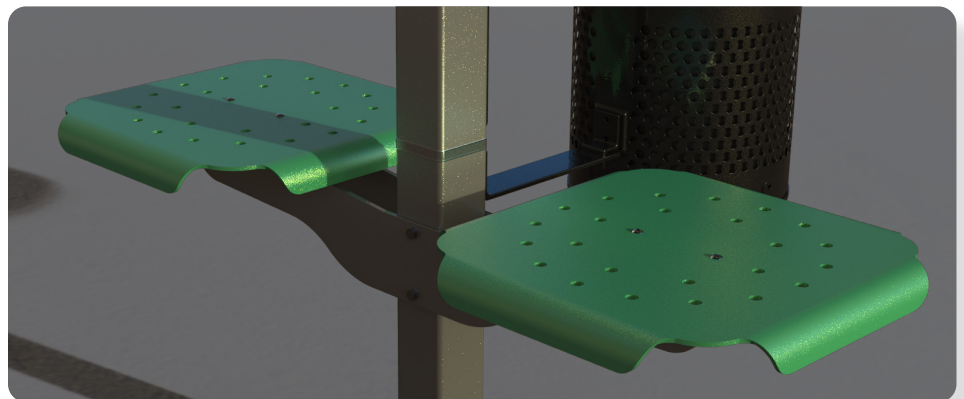


### LED LIGHT BAR

LED light bars are embedded on the angled supports for the Leaf Shelter. Fully enclosed LEDs within water-proof anti-corrosion aluminum. The color of the light is customizable with different temperatures from warm to cool.

### SEATING

The Leaf system features two 3/16" thick steel seats separated by the main pole. They are powder coated to any color. Compact size fitting within ADA requirements.



### SOLAR POWER GENERATION

Up to 500 watts of Solar Generation per unit. Angled roof allowing for optimal sun collection from any placement. The solar panels are ultra thin and secured to the roof structure by rivet all around their perimeter eliminating the chance of wind or weather damage.

# The LEAF Cover

## Shaded Shelter System

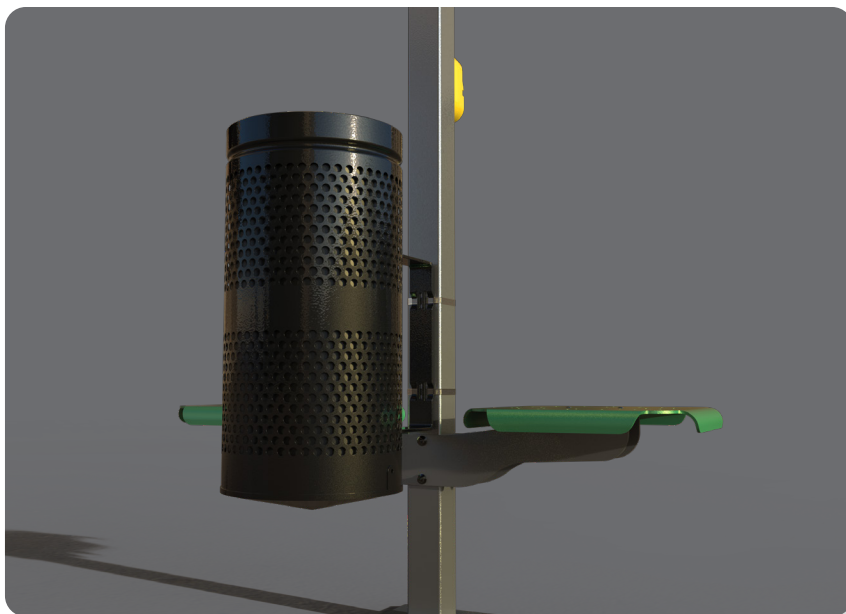
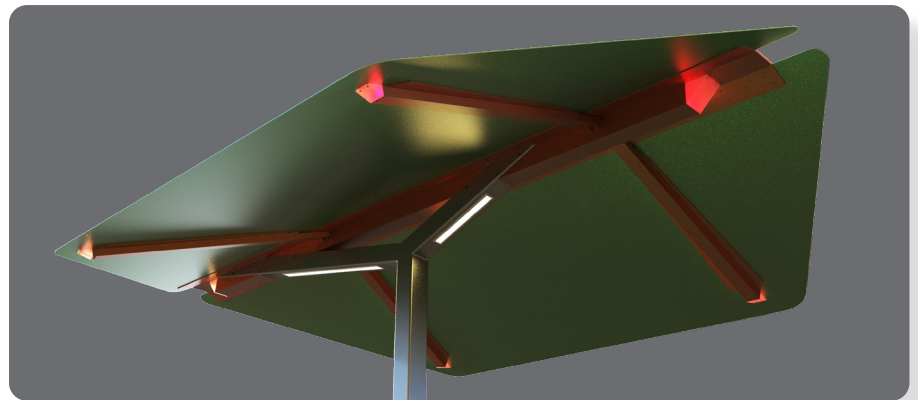


### ADA PUSH BUTTON

This push button activates the secondary lighting on the LEAF. Located on the main pole at a height of 36" makes it accessible for every passenger. Once pushed, it illuminates with "Wait" and produces an audible noise for the vision impaired.

### SECONDARY LIGHTING OPTION

This system features a secondary LED lighting system designed as a signal light for the transit operators. It is activated by the passenger and is visible from a distance to show a passenger is waiting.



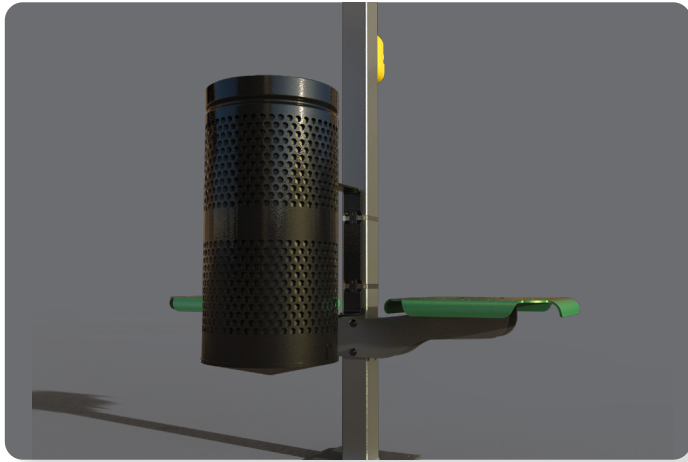
### RECEPTACLE OPTIONS

In some cases, a receptacle may be necessary. We offer both stand alone receptacles and mounted receptacles (as pictured). The mounted receptacle is 10 gallons with a removable liner and water escapes built into the bottom. It sticks off of the pole 12" to allow comfort for passengers.



# The LEAF Cover

## Shaded Shelter System

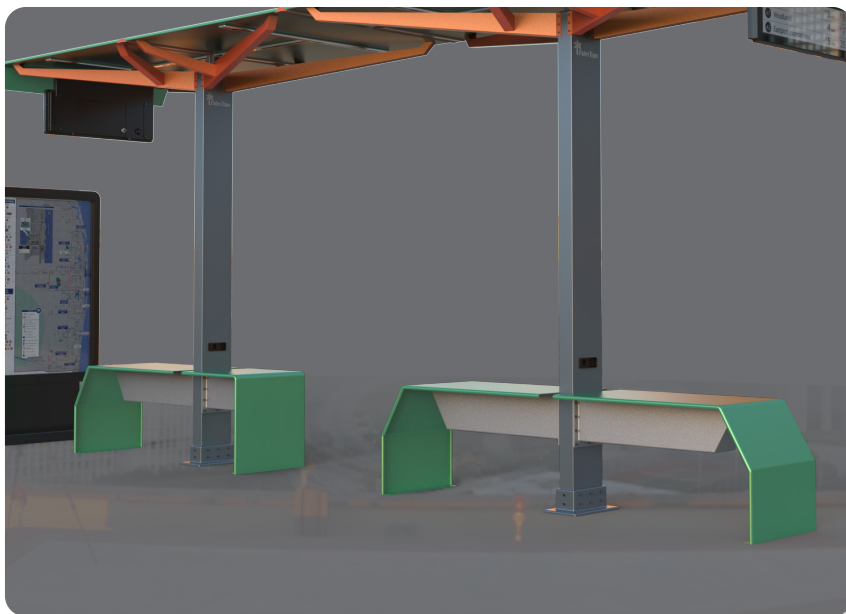
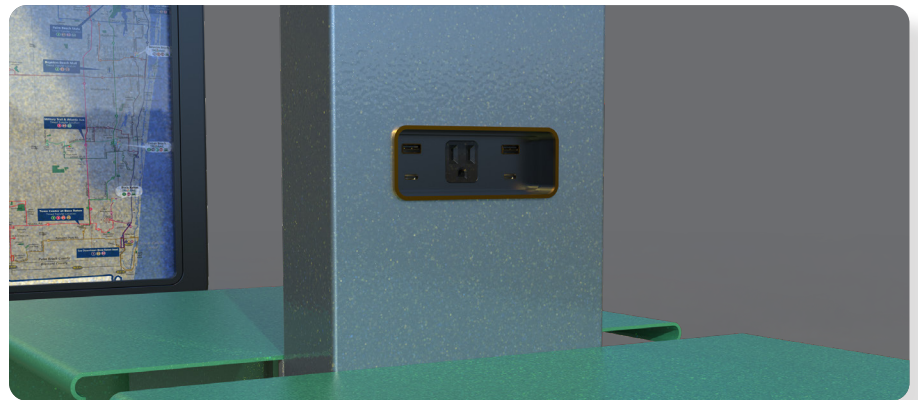


### UNIQUE SUPPORT DESIGN

Structural beams are designed to give this shelter system a more natural look, similar to that of tree branches. It allows transit agencies to utilize a wide variety of colorful options to match the city, agency, or local area.

### DEVICE CHARGING STATION

This system includes two USB-A ports, two USB-C ports, and one 120V A/C outlet per side. This accommodates the passengers while they wait, allowing them to charge a wide variety of devices.



### BENCH OPTIONS

Two styles of benches are offered: a full-sized bench and an ADA compliant bench. Each of these benches can be fashioned onto either side of the post allowing for unique customizations. This benches are designed with features intended to discourage prolonged use or sleeping to ensure its availability for short-term seating.

# The LEAF Cover

## Shaded Shelter System

### MODERN DESIGN

Designed to utilize a small footprint, the LEAF structure takes its design cues from nature. With adjacent support structures mimicking the veins in a leaf, and the shades taking their cue from the broadness of a leaf, the structure presents a familiar yet innovative look for transit agencies.



### LEAF Cover Benefits:

**Sheltered Seating:** Offers a shaded seating area providing relief from sun exposure or light rain, enhancing passenger comfort while waiting for transit.

**Solar-Powered Lighting:** Sustainable energy use with solar-powered lighting ensures visibility during darker hours without relying on external power sources, promoting eco-friendliness.

**Enhanced Safety Measures:** Secondary lights activated by an ADA-compliant push button serve as a signaling system for bus drivers, improving safety and ensuring prompt transit stops.

**Dual Seating Arrangement:** Two attached seats optimize space usage, accommodating more passengers within a compact area.

**Modern Design and Aesthetics:** The leaf-inspired design adds a contemporary touch to the urban landscape, contributing to the area's visual appeal.

**User-Friendly Accessibility:** ADA compliance ensures inclusivity and accessibility for individuals with disabilities, prioritizing equal access to transit amenities.

**Efficient Installation and Maintenance:** Modular, single-post design likely translates to straightforward installation and streamlined maintenance for minimal disruptions.

**Functional Innovation:** The Leaf Cover combines functionality with innovation, merging sustainable energy, safety features, and sleek design to redefine transit stop amenities.