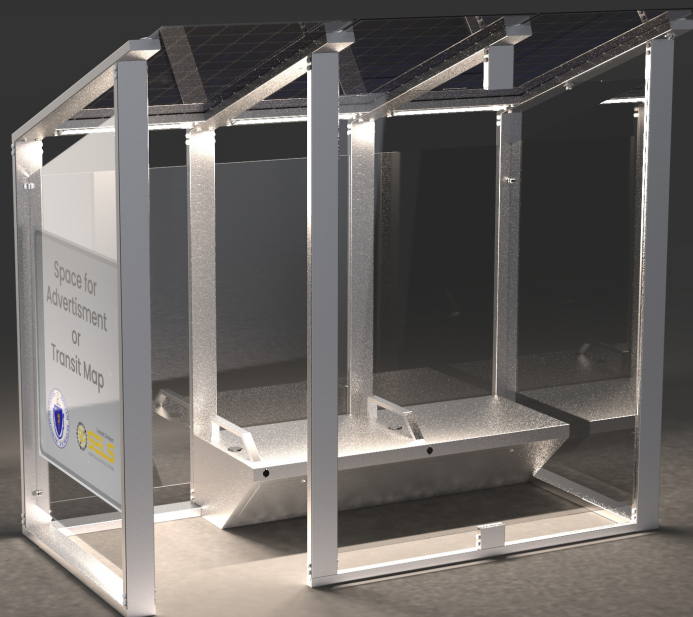


# SELS

SMART ERA LIGHTING SYSTEMS

## SELS SOLAR BUS SHELTER

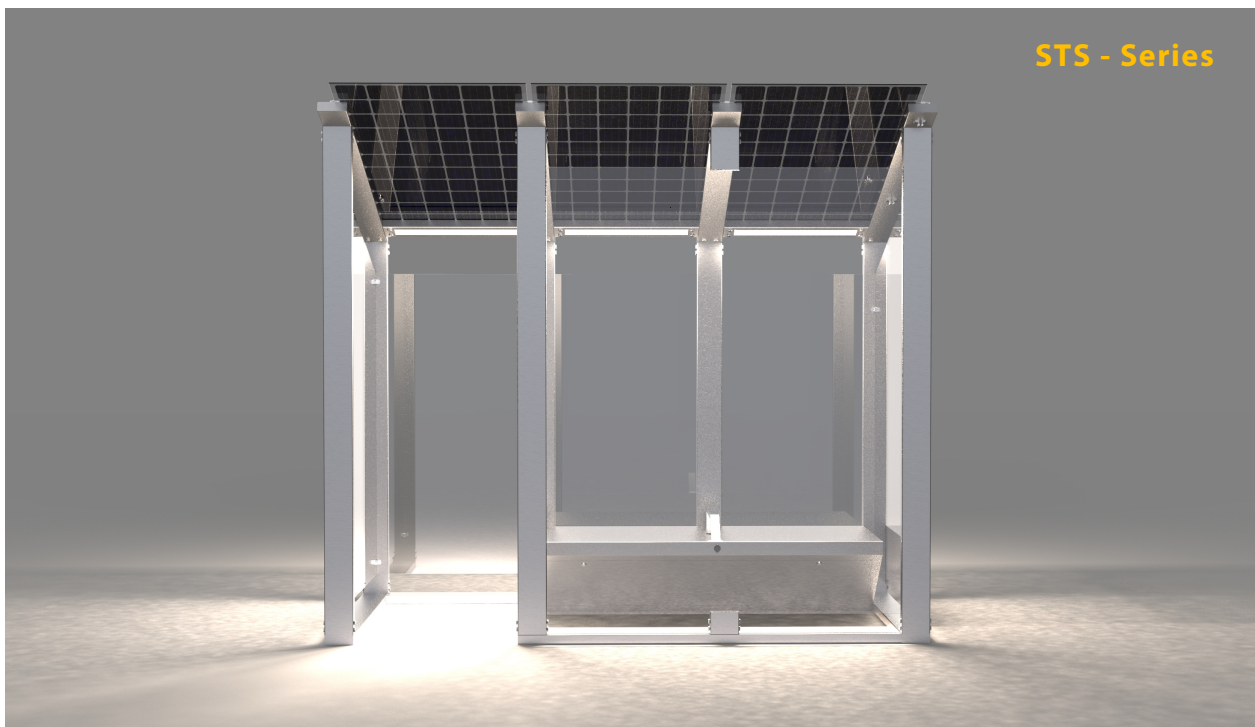
**SMART SOLAR BUS SHELTER**



# SMART SOLAR POWERED BUS SHELTERS

## THE FUNCTIONAL & ATTRACTIVE SOLAR BUS SHELTER

SELS' Urban Solar Powered Bus Shelters are the perfect solution for cities looking for architectural quality outdoor shelters with double utility to meet users' demand for lighting, connectivity and device charging. Never has it been so simple to provide riders with amenities like safety and security lighting, Wi-Fi, device charging, real-time rider notifications, surveillance or other options according to customer need. SELS' engineering team designed our shelters to incorporate expandable amenities, structural integrity for the harshest environmental conditions, and anti-vandalism features to ensure a quality investment for decades.



### ANTI BLACK OUT

Optimal component  
calibration and  
**intelligent**  
management system



### UNEQUALED LIFETIME

Selection of the  
**latest and highest**  
component  
technology



### EXTREME TEMPERATURE

Resistant  
**-20 °C to +65 °C**



### WARRANTY

SELS offers a 3 year  
warranty **on all**  
components

# COMPONENTS & ADVANTAGES



**SOLAR PANEL** Up to 2340 Watts of Solar Power Generation



## CHARGING PORTS

Up to 4 USB-A, 5V/2.1A Inductive Charging Pads



## WiFi ROUTER

Over 1500 sq. ft network area



## LIGHTING

Integrated safety and security lighting.



## LITHIUM BATTERY LiFePO<sub>4</sub>



**SAFE**  
No explosion risk

The eco-friendly and safe LiFePO<sub>4</sub> battery improves the cyclic charge and discharge over 2000 times and has a life span of **more than 10 years**.



## BATTERY MANAGEMENT SYSTEM

Electronic protection algorithm and battery management system for **best use of the battery capacity**.



## MULTI PROTECTION



OVER  
LOAD



OVER  
CURRENT



OVER  
TEMPERATURE



OVER  
VOLTAGE



OVER  
CHARGE



OVER  
DISCHARGE

LiFePO<sub>4</sub>

VS

Lead Acid

Over **2000** cycles



Over **500** cycles

Extreme discharge tolerance



Sensitive to deep discharge

-10 to 75 degrees



-10 to 75 degrees

Over 10 Years



3-6 Years



50% Cheaper than LiFePO<sub>4</sub>



## OPERATION

Guaranteed continuous operation without need for grid connection



## STRUCTURE & DIMENSIONS

ASTM A360 Structural Steel  
10' x 8' x 5' - 18' x 8' x 5'



## MOUNTING

Secure anchorage with stainless steel security fasteners



## POWER STORAGE

Up to 9kWh High Performance Lithium Batteries- 2,000 Cycle Rating



## MPPT SMART CONTROLLER 97% CHARGING EFFICIENCY

MPPT (**Maximum Power Point Tracking**) maximizes solar power output regardless of weather variation.



## FEATURES

- Maximum power point tracking charging
- Auto identify day/night
- 4 levels of operations
- Smart mode operation
- Waterproof IP66

IP66



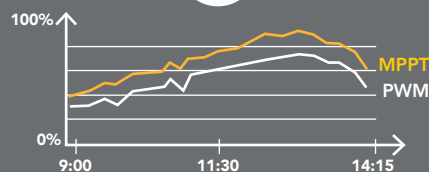
## PROGRAMMING

- Check the state of the battery
- Check the charging history
- Configure operating parameters
- View diagnostic

MPPT

VS

PWM



CHARGING EFFICIENCY VS TIME

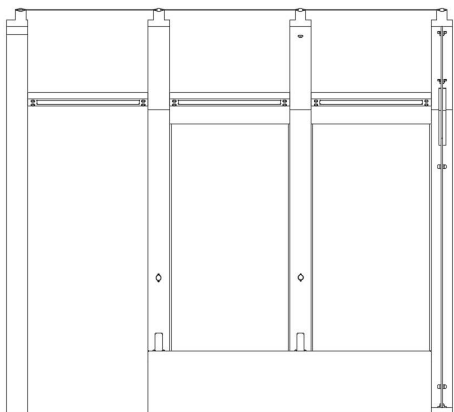
## SECURE & ROBUST INSTALLATION

### SIMPLE, FITTED ON-SITE ASSEMBLY

SELS' urban shelters are fast and easy to install on existing concrete surfaces.

- SECURE TAMPER PROOF SYSTEM**

All components are secured inside the frame of shelter



- CONTROLLER**

MPPT Smart Controller

- POWER STORAGE**

Long life LiFePO<sub>4</sub> battery:  
2,000 Cycle Rating

- FINISH**

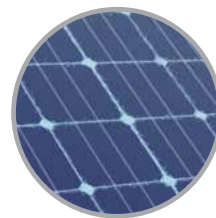
Available in various color options:  
polyester powder coat

- WARRANTY**

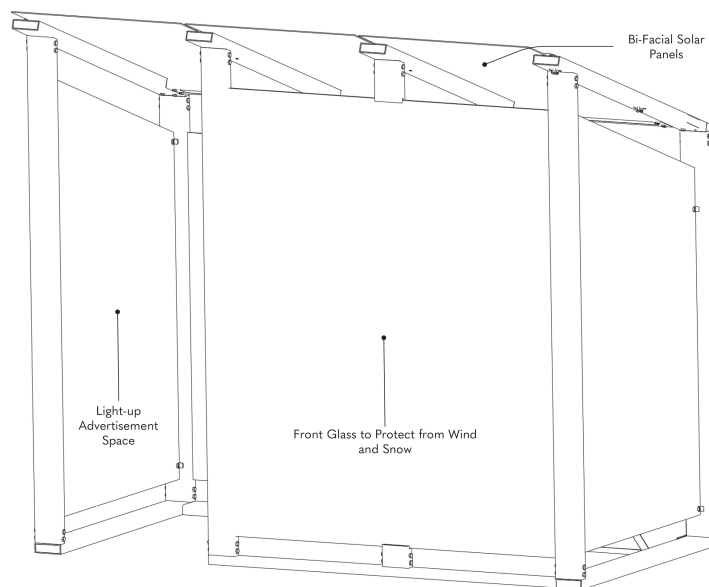
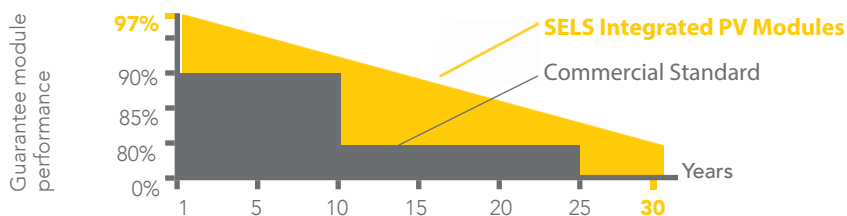
Accompanied by 5- year full warranty

## SOLAR PANEL

**Monocrystalline bi-facial solar panels.** Solar panel efficiency up to 19.4%. 5 busbars for better collected current capacity. Super-hard tempered glass withstands severe punishment.



### OUR PV PERFORMANCE GUARANTEE



18ft - Wi-Fi & Bluetooth

## SOLAR URBAN SHELTER LIGHT OPTIONAL OPERATION MODES

**PHOTOSENSOR MODE AUTOMATICALLY POWERS ON THE LIGHT AT DUSK AND OFF AT DAWN.**

SELS gives you the option to select the perfect lighting profile for your project.

Choose from a preprogrammed profile or give us your specs for a custom lighting solution.



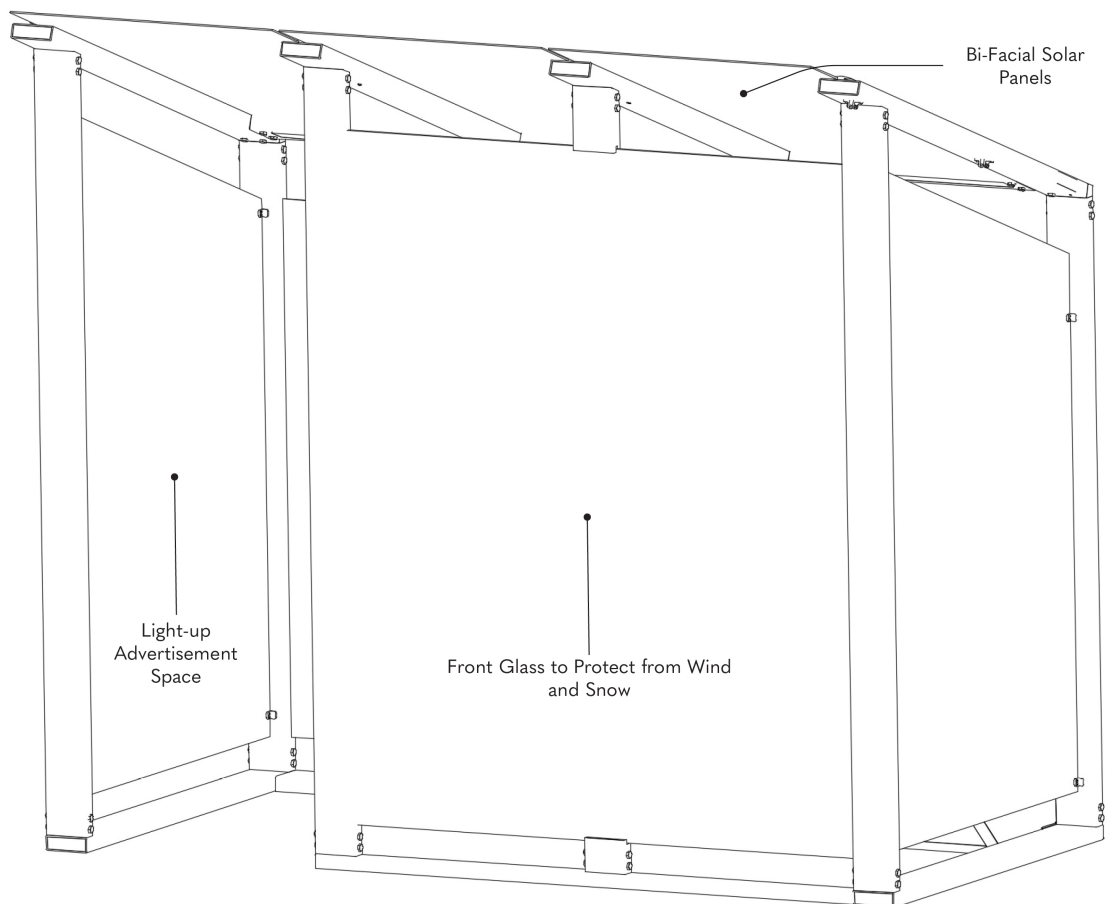
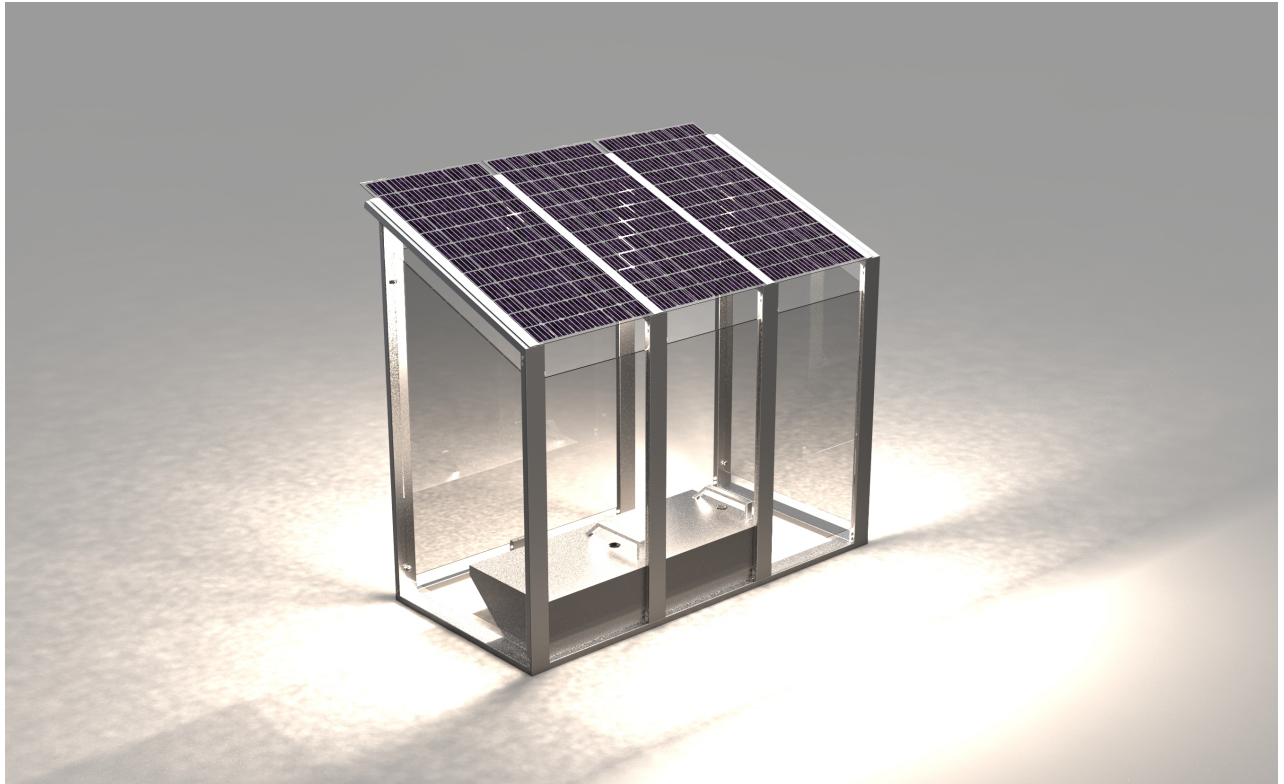
□ 100% ON    ■ 30% DIM    ■ Sensor\* 30% Dimming + 100% Power for 1 min when triggered



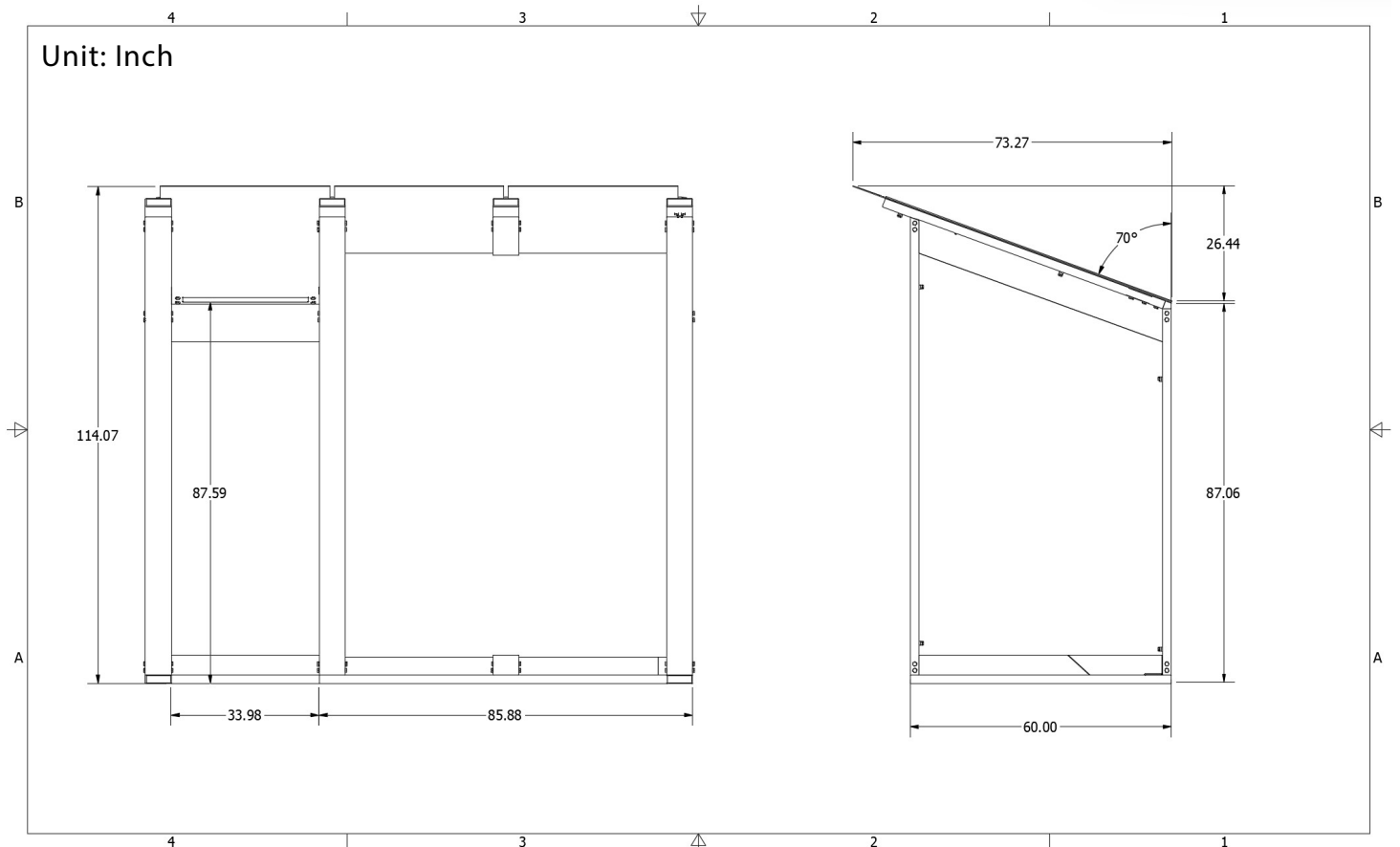
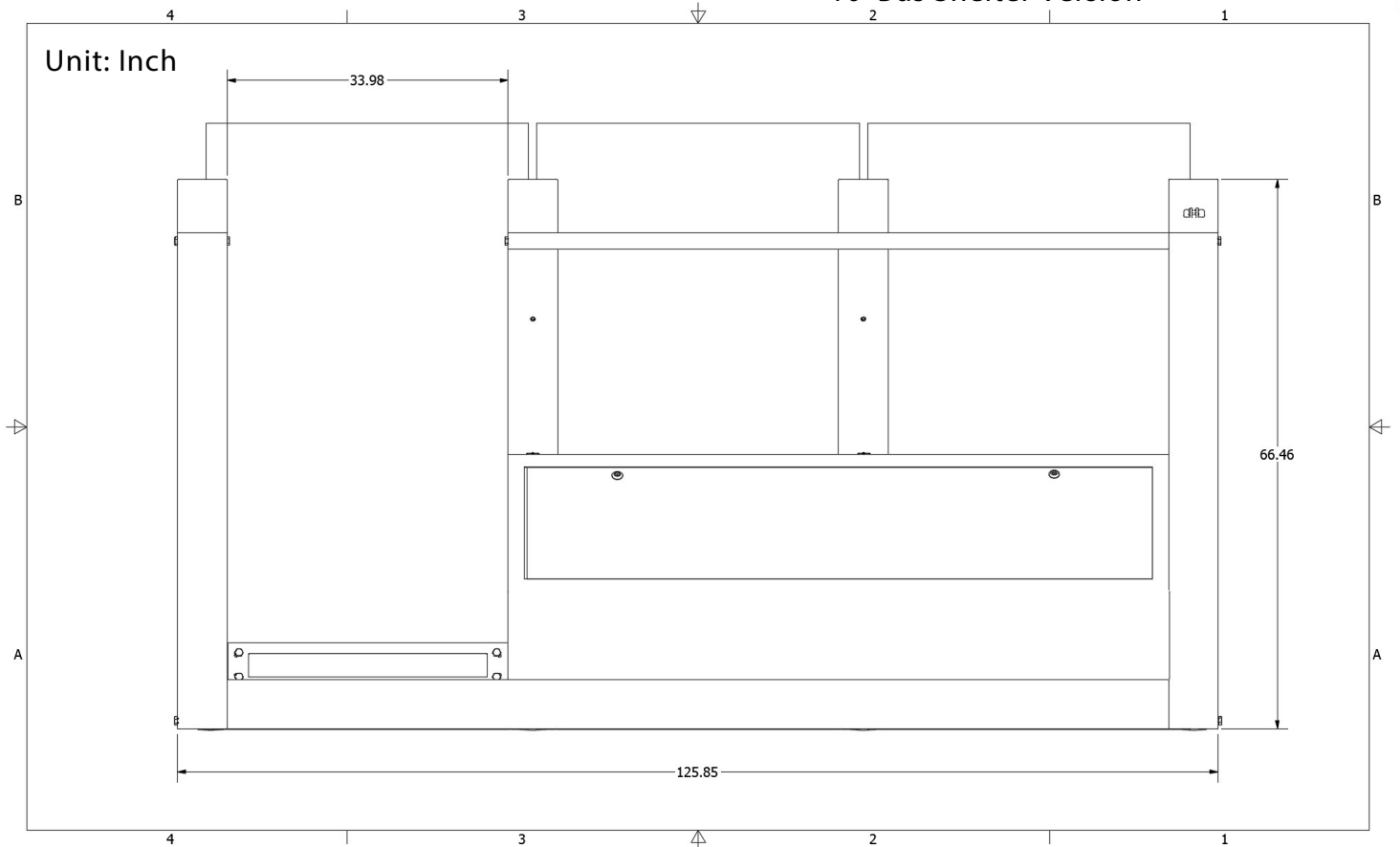
MADE TO THE **HIGHEST STANDARDS**

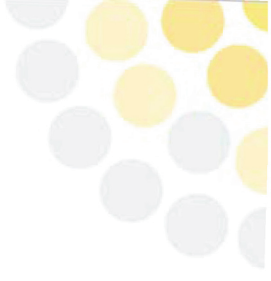
**SELS** engineered the STS-Series Shelters to  
combine modern aesthetics with lasting durability

## 10' Bus Shelter Version



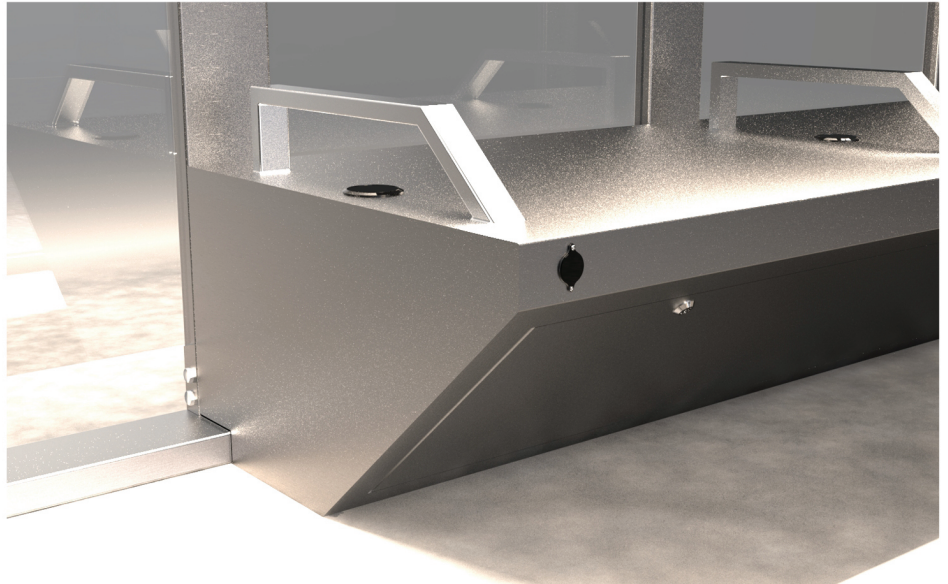
### 10' Bus Shelter Version



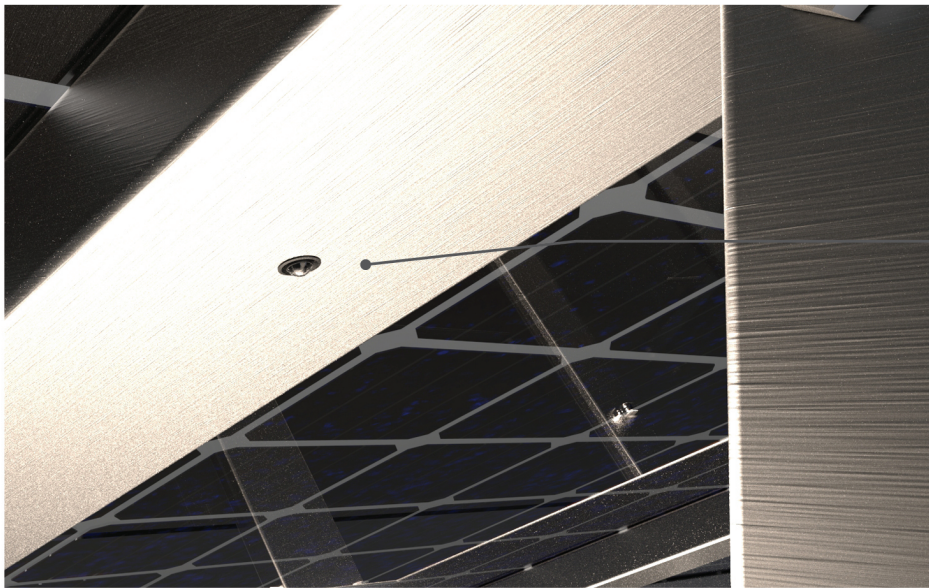


**Feature Focus:**

- Secure Wireless Charging Pads
- Sophisticated and Discreet Surveillance
- High-output LED Security Lighting



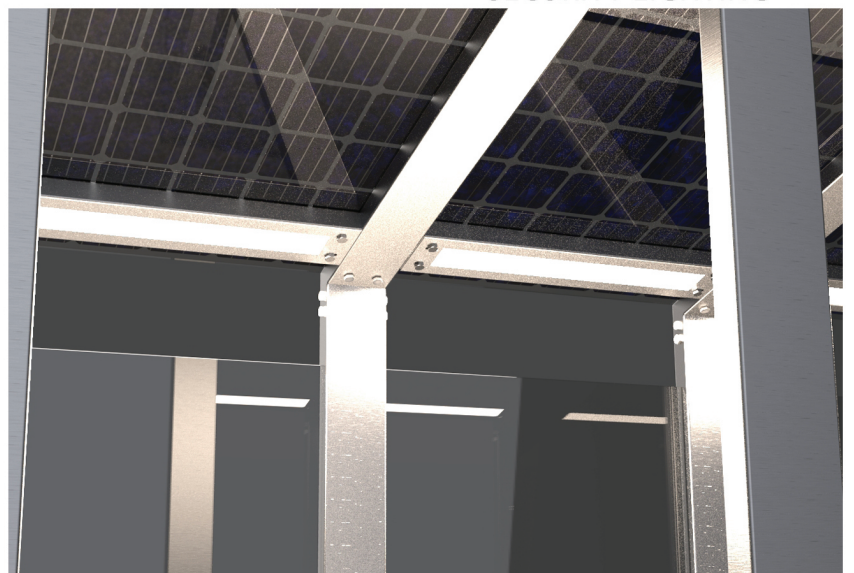
SURVEILLANCE



WIRELESS & USB  
CHARGING

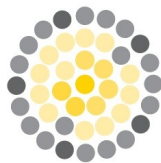
Ultra-Small Security Camera

SECURITY LIGHTING





**SMART SOLAR SOLUTIONS: SELS**



**SELS**

SMART ERA LIGHTING SYSTEMS

4747 Kester Mill Rd,  
Winston-Salem, NC 27103  
704-495-3535

**E-MAIL**

**custsomerservice@selsled.com**

**www.SELSolar.com**