

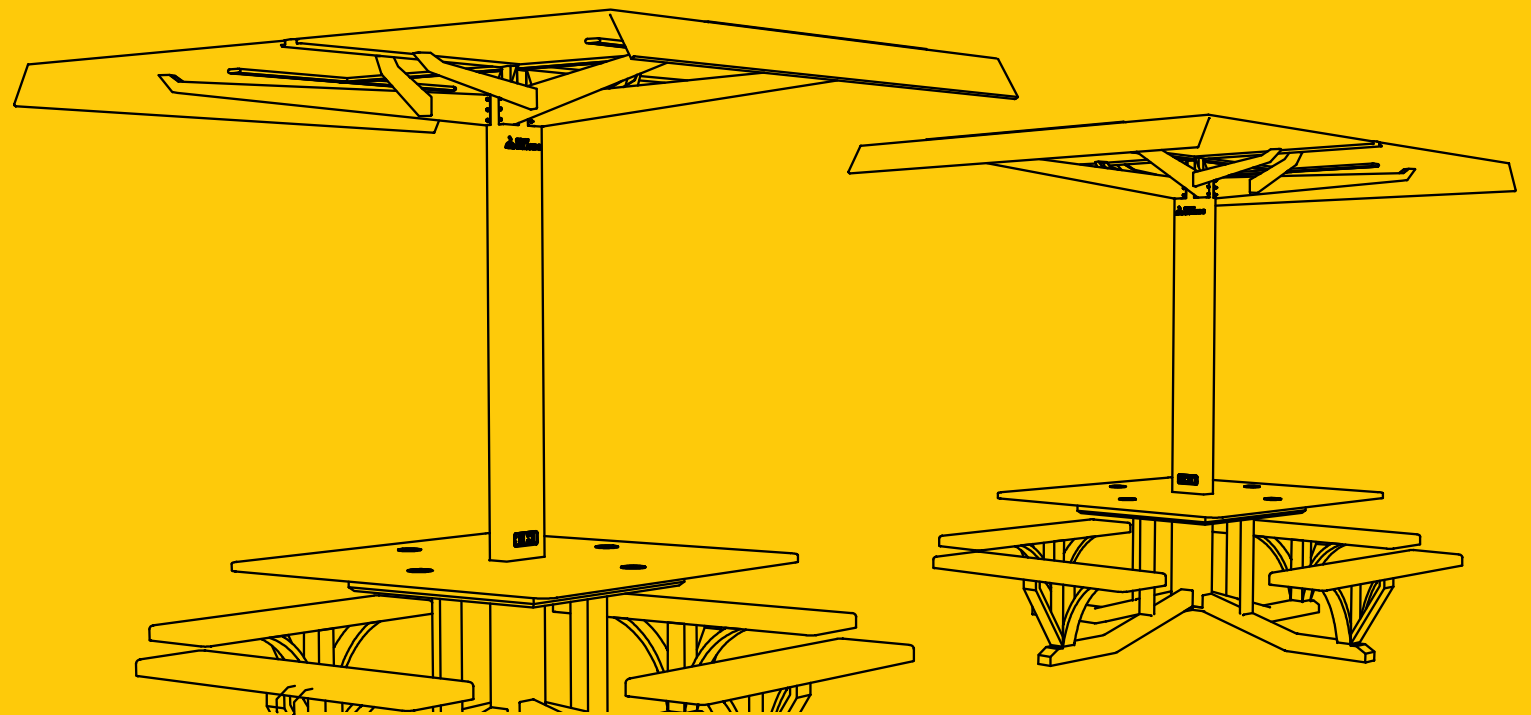
# SELS

SMART ERA LIGHTING SYSTEMS



## **Solar Table - "STAG" Table**

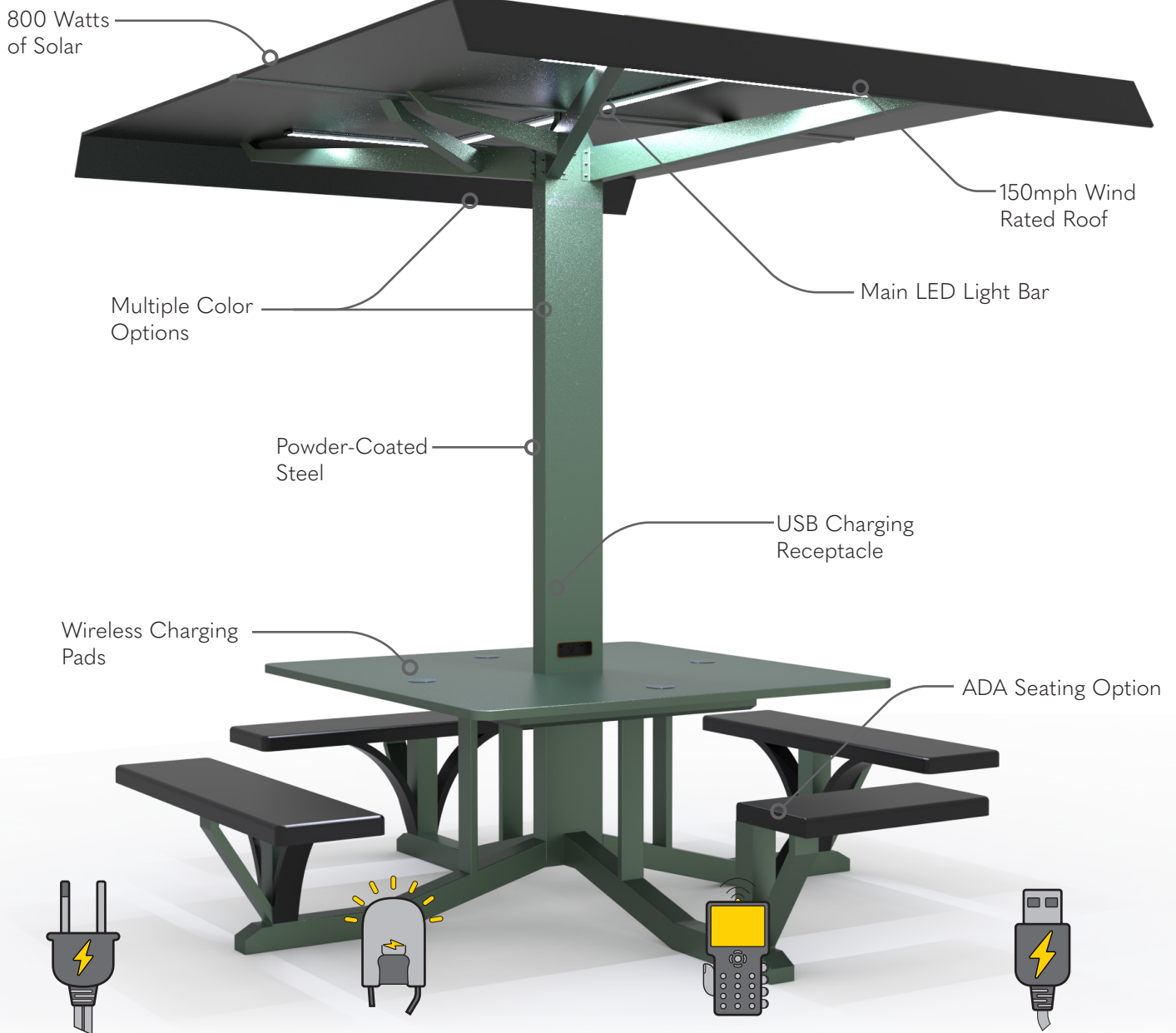
Solar Charging Station with Lighting



# The STAG Table

## Solar Charging Station

Introducing the "STAG" Table: a state-of-the-art solar charging station and shaded canopy table. This cutting-edge product seamlessly blends sustainability and functionality, featuring USB, USB-C, and wireless charging capabilities. The solar-powered design ensures eco-friendly energy use, making it an ideal solution for outdoor spaces. The integrated canopy provides shade, enhancing user comfort during charging sessions. With versatile connectivity options, including USB and USB-C ports, as well as wireless charging functionality, the STTS-1100 caters to a diverse range of devices.



### 120V AC Charging

Plug in a Standard 120 V plug to charge or power larger devices.



### LED Lighting

Lighting Color Options: 2200K - 5000K  
Lumen Options: 150 Lumens per Watt



### Fully Programmable

Dimming and lighting schedule is customizable to customer needs. Monitor power usage on the web.

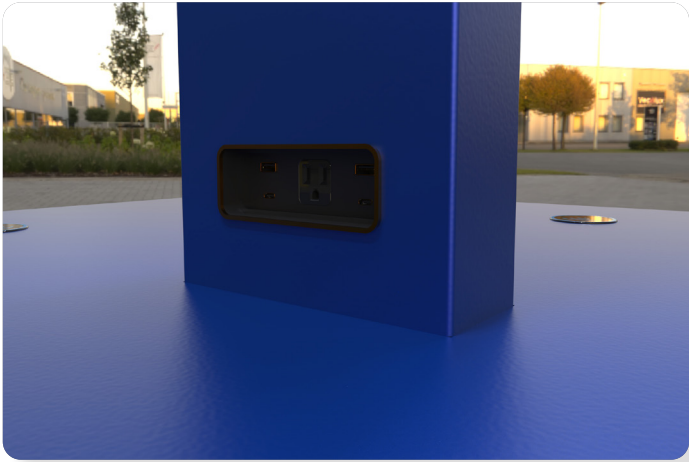


### USB Charging

Plug in a USB cord to charge or power any device.

# The STAG Table

## Solar Charging Station

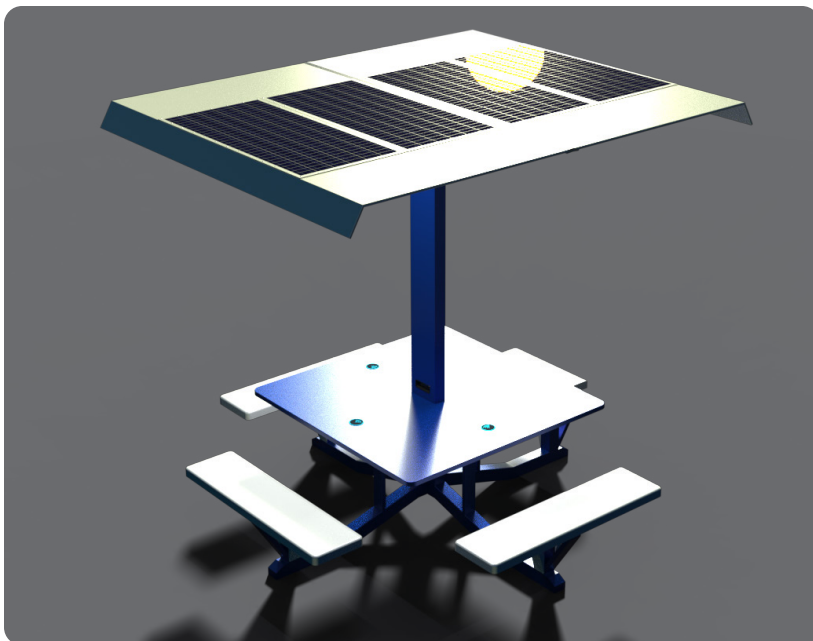
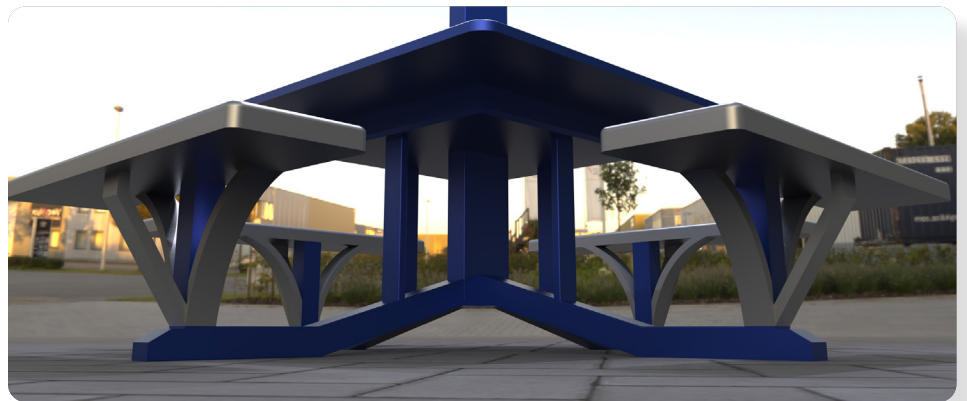


### USB RECEPTACLE

USB Charging receptacles are featured on both sides of the main pole. This allows for a variety of additional charging options for a wide range of devices.

### GROUND MOUNTING

Robust ground connection ensures that each table will be securely mounted to the ground. This aids in the wind rating and safety of users.

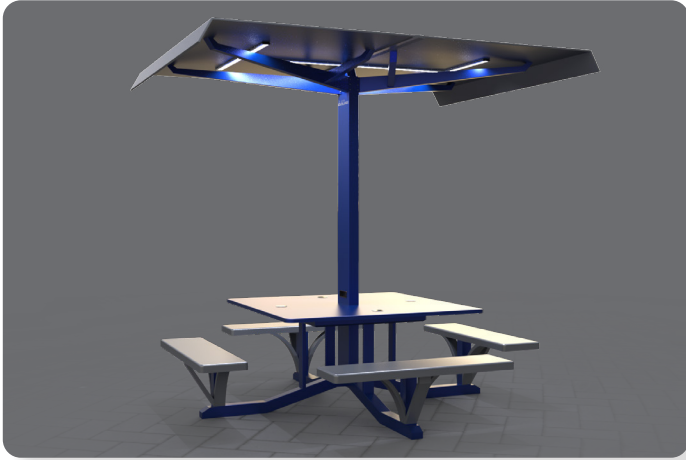


### SOLAR POWER GENERATION

Up to 1000 watts of Solar Generation per unit. The solar panels are ultra thin and secured to the roof structure by rivet all around their perimeter eliminating the chance of wind or weather damage.

# The STAG Table

## Solar Charging Station

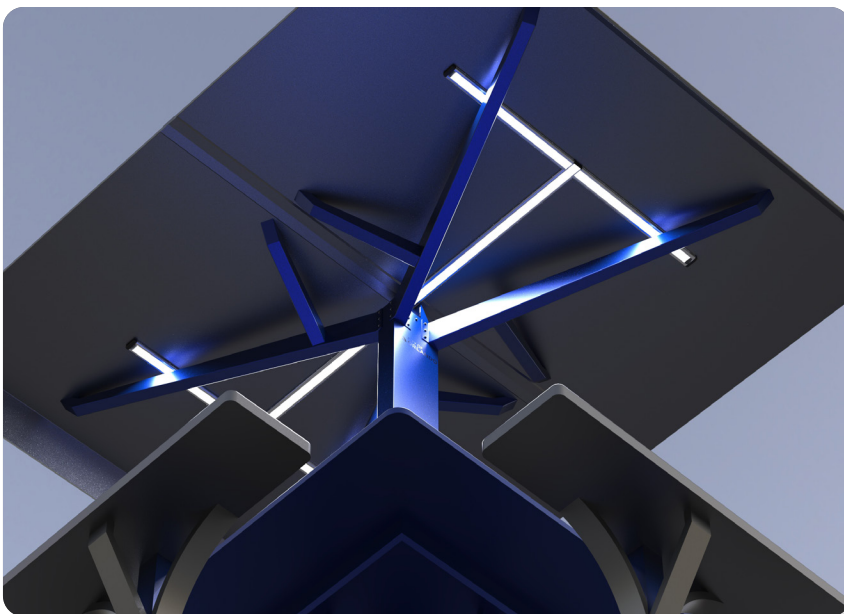
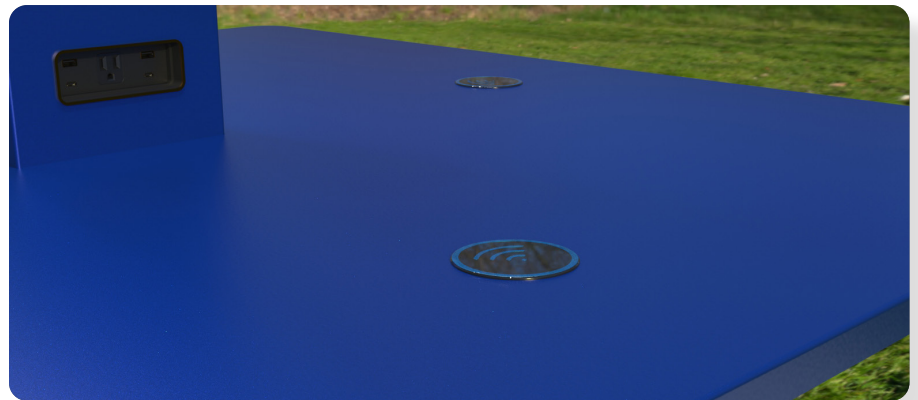


### CONSTRUCTION

A combination of aluminum and structural steel is used during the manufacturing process. Aluminum up top to keep it light and steel on the bottom for rock solid connection and support. All powder coated to any color needed.

### WIRELESS CHARGING

This table features integrated wireless charging for easy device charging. Never forget a cord again, around the clock charging for any modern device.

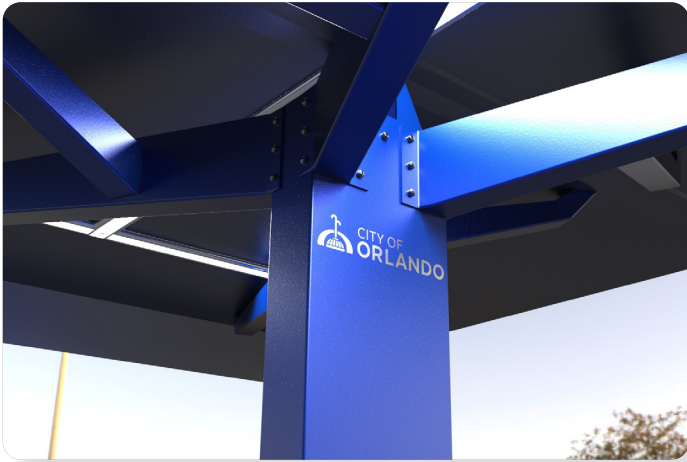


### CANOPY LIGHTING

LED lighting along the top of the Shelter's canopy. Long-lasting waterproof lighting provides comfortable security and viability for passengers. Lighting is activated by the setting sun to ensure that light is provided only when it is needed. These settings can be fully customized.

# The STAG Table

## Solar Charging Station

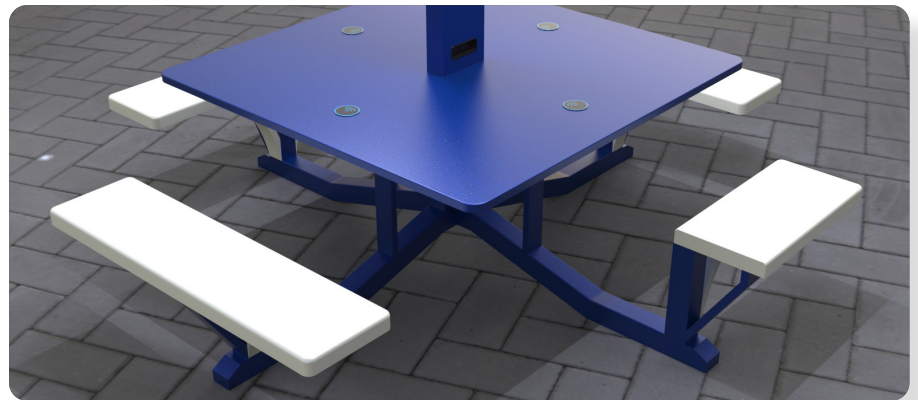


### LASER ETCHED LOGO

Logos, symbols, and agencies can easily display themselves on the main pole by laser etching. This brings recognition to the people providing the solar amenities and helps create awareness.

### ADA COMPLIANCE

Custom seat orientation is available with 3 options: standard bench seating, chair style seating, and an ADA compliant version of both.



### COLOR OPTIONS

Full color customization available. The structure is powder coated and can be coated in any color combination. Express your brand, agency, or organization aesthetically.

# The STAG Table

## Solar Charging Station

### MODERN DESIGN

Designed to provide all the modern amenities you should expect from green energy innovation. Charging, shelter, aesthetics, and made in America. The STAG shelter helps to sustainably usher in the modern era.



### STAG Table Benefits:

**Eco-Friendly Charging:** Harnesses solar power for charging, reducing reliance on conventional energy sources and promoting sustainability.

**Versatile Charging Options:** Offers USB, USB-C, and wireless charging, accommodating a wide range of devices and catering to diverse user needs.

**Shaded Canopy Table:** Provides a comfortable and shaded area for users to relax or work while their devices charge, enhancing the overall outdoor experience.

**Portable Design:** Compact and easily transportable, allowing convenient placement in various outdoor settings.

**User-Friendly Connectivity:** Simplifies device charging with multiple connectivity options, ensuring compatibility with various gadgets.

**Weather-Resistant Construction:** Built to withstand different weather conditions, ensuring durability and functionality in diverse outdoor environments.

**Promotes Outdoor Usage:** Encourages outdoor activities by offering a convenient charging solution in parks, recreational areas, and other public spaces.

**Enhanced Connectivity in Remote Areas:** Ideal for locations with limited access to conventional power sources, providing a reliable charging station for off-grid or remote areas.