

THE BROOKLYN BRIDGE

DAC • HEADPHONE AMP • PREAMP

• NETWORK PLAYER •



Owner's Manual



DSD
Direct Stream Digital
256



MQA

DXD
Digital eXtreme Definition

roon

VINYL

Owner's Manual Ver. 1.0 / February 2019

© Mytek 2019

The Brooklyn Bridge firmware can be easily updated via Mytek USB Control Panel. As the firmware is updated, Mytek will be posting new firmware releases in the support/download section on Mytek website. Firmware may alter details of Mytek operation and consequently there will be periodic updates to this manual. For news, driver updates, technical support, tips and further product information please visit our website:

mytekdigital.com

Technical support issues are handled via our online support ticketing system. Please enter details of the ticket in the support/download section on Mytek website.

MYTEK

148 India St.
Brooklyn, NY 11222

tel. +1 (347) 384-2687

Contents

1. Introduction	4
2. Package Content	5
3. About Brooklyn Bridge	5
4. Device Features	6
5. Quick Start	7
5.1 Front Panel	7
5.2 Rear Panel	8
6. Windows installation and configuration	9
6.1 Windows – USB 2.0 driver installation	9
6.2 Windows – Mytek Control Panel installation process	11
7. macOS installation and configuration	12
7.1 macOS – USB 2.0 driver installation	12
7.2 macOS – Mytek Control Panel installation	12
8. Firmware update Windows and mac OS	13
9. Menu	14
9.1 Menu Navigation	14
9.2 Menu Operation	15
10. MQA - Master Quality Authenticated	19
11. Remote	20
11.1 The Brooklyn Bridge Apple Remote Setup	20
11.2 The Brooklyn Bridge Standard Remote (RC5) Setup	20
12. Technical Specification	21
13. Warranty	22

1. Introduction

Thank you for choosing the Brooklyn Bridge from Mytek Digital and welcome to the Mytek users' community.

Over 25 years of experience in building mastering grade converters and other audio equipment has been utilized to create this digital to analog converter. Its sophisticated audio path is designed to deliver bit perfect, high quality, transparent sound to your speakers and headphones. The Brooklyn Bridge will play:

- PCM up to 32 bit / 384 kHz and DSD64, DSD128, DSD256 over USB
- PCM up to 24 bit / 192 kHz and DSD64 (DoP) over network
- MQA master quality files of online streaming services
- Vinyl records utilizing its precision M/C or M/M phono preamplifier
- Any other digital source equipped with TOSLINK, SPDIF
- Any other analog source plugged into analog input

The Brooklyn Bridge has been optimized for highest performance under Windows, Mac OS and Linux. Based on a newly developed Mytek Hi-Speed USB (USB2) Audio Class 2 32bit/384kHz Integer Interface, the Brooklyn Bridge provides very low latencies as well as extreme stability.

Fast Windows drivers including ASIO & WASAPI are provided. Linux and macOS computers as well as the Linux audio streaming devices do not require a driver.

Enjoy your new Brooklyn Bridge!

All the best,
The Mytek Digital Team

2. Package Content

- The Brooklyn Bridge (silver or black)
- USB 2.0 Cable
- Aluminum remote (Apple)
- Power cord
- Wi-Fi antenna
- Owner's manual

3. About Brooklyn Bridge

Brooklyn Bridge continues technological thought of Brooklyn family. It has the same as in DAC+ Sabre 9028 Pro chipset and analog section – it still has pristine, transparent and musical sound!

The main difference lays in network connection capability. It adds network streamer functionality to the Brooklyn Bridge. You can connect your Brooklyn Bridge via Ethernet (RJ-45) cable or Wi-Fi. We also added USB-A port for pendrive or 2.5" HDD connection.

The Brooklyn Bridge is a Universal Plug and Play (UPnP) rendering device. Typical UPnP environment consists of three necessary elements:

- Server enables transport of the music stored on the computer or NAS to some end-point (i.e. JRiver Media Center).
- Renderer converts the stream to format acceptable by the DAC.
- Controller offers a user interface for a convenient playback experience (typical these are mobile apps, i.e. mConnectControl, mConnectPlayer; JRiver also can act as a UPnP controller).

So you can use programs like JRiver Media Center both as a UPnP server and controller. While using NAS you need to have compatible controller app like mConnect to stream music from it.

The Brooklyn Bridge will play the following formats through the network connection:

- PCM up to 24bit / 192kHz
- DSD64
- MQA master quality files

The files can come from various sources:

- USB Flash
- Roon, mConnect (TIDAL, Deezer, Qobuz)
- NAS
- DLNA/UPnP source

4. Device Features

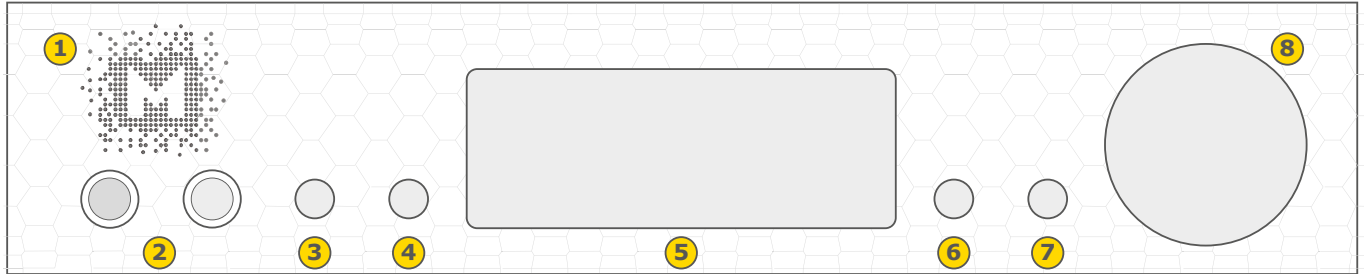
- Conversion: up to 384k, 32bit PCM, native DSD up to DSD256, DXD, 130dB Dynamic Range
- Analog outputs: simultaneous RCA and balanced XLR
- Headphone outputs: Reference High Current, High transient balanced Headphone Amp, 500mA, 6 Watts, dual headphone jacks, designed to drive hard to drive headphones
- Built-in Attenuator: Choice of 1dB-step analog attenuator, 1dB-step digital 32 bit attenuator and purist relay bypass
- 2x SPDIF Coaxial Input: PCM up to 24bit / 44.1kHz, 48.0kHz, 88.2kHz, 96.0kHz, 176.4kHz, 192.0kHz, 352.8kHz, 384.0kHz, DSD64, DSD128 (DoP)
- SPDIF Optical Input: PCM up to 24bit / 44.1kHz, 48.0kHz, 88.2kHz, 96.0kHz, 176.4kHz, DSD64 (DoP)
- Mytek proprietary USB Audio Class 2, up to 32bit/384k, DSD256, also accepts digital SPDIF and TOSLINK inputs.
- Mytek Femtoclock 0.82ps internal jitter
- Built-in Analog Preamp: Line level input or Precision Phono M/M, M/C input, relay controlled
- Choice of Transparent Analog or Digital stepped volume control with „Bypass“ option for the purest signal path
- Built-in certified hardware Hi-Res MQA decoder
- High definition metering with simultaneous RMS and peak indication
- Five digital inputs are fitted (1x USB, 2x SPDIF coaxial, LAN/Wi-Fi and 1x SPDIF Optical) which allow a wide range of digital sources to be connected
- Trigger control allows the Brooklyn Bridge easily to be integrated with other HiFi devices

Network Features

- Connectivity Protocol Support: DLNA/UPnP and Roon
- Audio Decoding: FLAC, Apple Lossless, AAC, AIFF, MP3, WAV, WMA, OGG, Monkey's
- MQA(Master Quality Authenticated) Support: MQA stream bit perfectly transported to the hardware decoder inside Brooklyn Bridge
- Integrated Internet Streaming Music: TIDAL, Qobuz, Deezer (via mConnect or Roon)
- Supports Gapless playback
- Supports DSD64 DoP input from network
- mconnect Multi-room technology: Simultaneous music play by multiple speakers with synchronization
- Digital Media Server (DMS) function for serial flash memory: USB memory connected to Brooklyn Bridge will function as a DLNA server

5. Quick Start

5.1 Front Panel



1. Mytek backlit logo with its color and brightness user adjustable. Color follows the color of the Mytek Control Panel

2. Headphone Output Section, Dual Mono, with Balanced Operation mode [500mA, 6 Watts]. Left jack connects unbalanced phones in absolute phase. Right jack connects unbalanced phones in absolute out of phase. A special 2x 1/4" jack to 4 pin FXLR allows for connection of single balanced headphones. Balanced headphones will play twice as loud (+6dB) as unbalanced headphones with output voltage swing of +/- 12V and output impedance below 0.5 Ohm

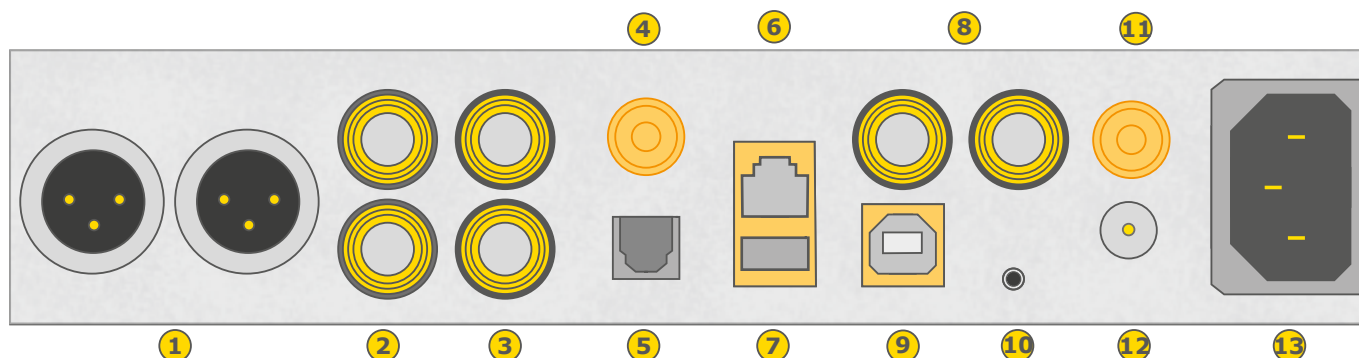
3,4,6,7. Functional button enables the user to quickly choose an option, change and configure the device's settings.

5. OLED display

8. Rotary Encoder Knob. This encoder is both a knob and a button. It's primary function is to control the volume level. It also functions as MENU navigation for configuring device's options

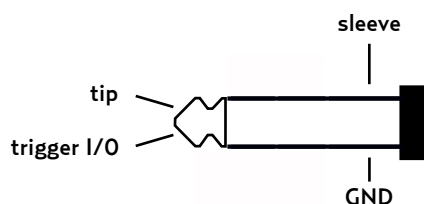
Press and hold the main knob to turn the Brooklyn Bridge on or off.

5.2 Rear Panel



1. Balanced XLR Stereo Analog Output
2. RCA Stereo Analog Output
3. RCA Stereo Analog Input
4. Phono ground connector when turntable is used
5. Optical Input (TOSLINK). Digital input which accepts up to 192kHz/24bit. Accepts DSD DoP standard input up to DSD64. This input can also be used to transmit digital audio into computer via USB2 connection. For best results use short high quality TOSLINK cable. Special glass fiber TOSLINK cable allows for longer cable runs and is less jittery than regular plastic fiber
6. Ethernet port. Allows you connecting RJ-45 type cable (min. cat5 required)
7. USB-A 2.0 port. Accepts pendrives and 2.5" HDD. Maximum load 500mA
8. S/PDIF Coaxial Input 1 and S/PDIF Coaxial Input 2. These are digital inputs which accept up to 192kHz/24bit. They also accept DSD DoP standard input up to DSD64. This input can also be used to transmit digital audio into computer via USB2 connection. To obtain best results, use a high quality 75 Ohm digital RCA interconnect cable
9. Mytek proprietary USB 2.0 Class 2, up to 32bit/384k, DSD256, also accepts digital SPDIF and TOSLINK inputs
10. Trigger I/O connector. The Brooklyn Bridge is fully compatible with popular trigger, HiFi control systems. When working as the input the voltage range of 3.3V – 24V is accepted. When working as the output it feeds 12V in this state. This connector is compatible with 3.5mm, 2 pole (tip and sleeve) jack plug only

mono plug diagram



11. Wi-Fi antenna connector
12. Optional external DC/Battery Power input 12VDC. Connecting a large external battery or large power supply may have positive impact on sound quality
13. The build-in automatic power supply operates worldwide in the range of 100V to 240V AC

Quick Start – Immediate Playback SPDIF and TOSLINK

Connect the analog outputs to your powered speakers, power amplifier or preamplifier. Alternatively use headphones. Connect the digital source (CD player) to the DAC. Power up the player, power amplifier and the Brooklyn Bridge. The DAC has default (out of the box) settings hand picked by our team to deliver optimal sound quality. Choose the input you would like to use.

Attention! To prevent damage, do not turn on your speakers on until all connections have been made.

Do not cover ventilation holes! It's not recommended to stack or rack mount the Brooklyn Bridge. It may result in overheating the device!

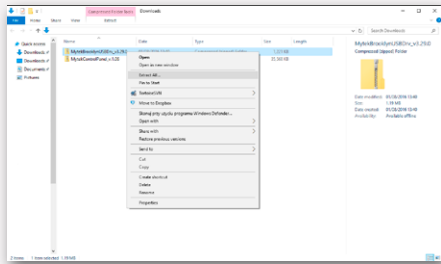
6. Windows installation and configuration

- Note that for proper operation it is necessary to install the USB2 driver (Windows only) and Mytek Control application. Both these have separate installers

6.1 Windows – USB 2.0 driver installation

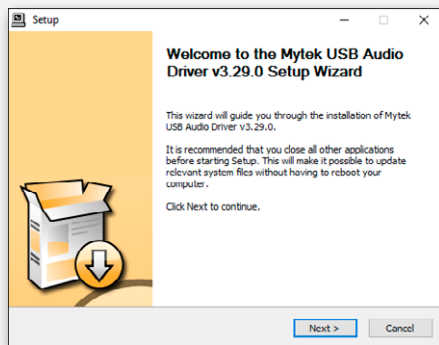
To simplify installation it is recommended to first install the drivers before the unit is connected to the computer. The latest drivers are available at mytekdigital.com

1. Locate the MytekUSB2Drv.v4.xx.x.zip file and extract the contents of the archive by right clicking on the zip archive icon and selecting „Extract Here”.

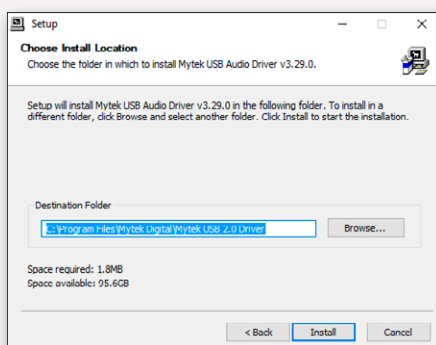


2. Installation works automatically by a double-click on MytekUSB2Drv.v4.xx.x.exe file.

3. Once the Setup.exe opens click „Next”.

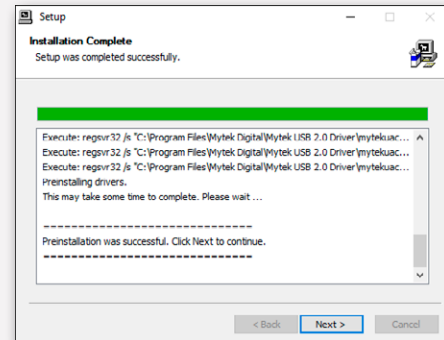


4. Choose the location of installation. Default location is „C:\Program Files\Mytek Digital\Mytek USB 2.0 Driver”. We recommend leaving this as it is. If you wish to customize the install choose the location by selecting browse. Click „Install”.



5. Setup.exe will now install the Mytek Driver. This process may take a few minutes.

6. Upon completion of „Setup.exe” press the „Next” button.



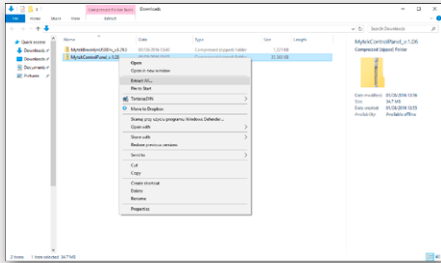
7. To complete installation of the driver simply click the „Finish” button.



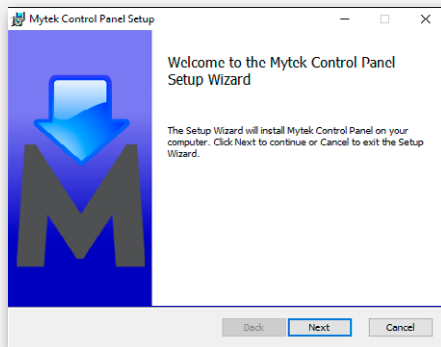
8. Connect the Brooklyn Bridge to USB 2.0 port in your computer.

6.2 Windows – Mytek Control Panel installation process

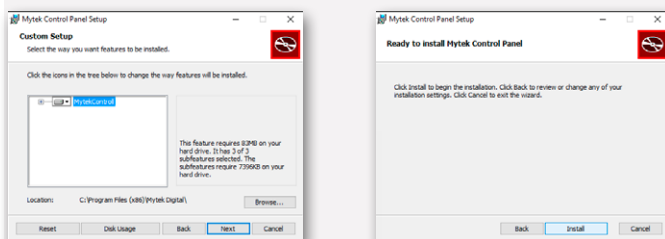
1. Locate the MytekControl.zip file and extract the content by right clicking on the zip archive icon and selecting "Extract Here".



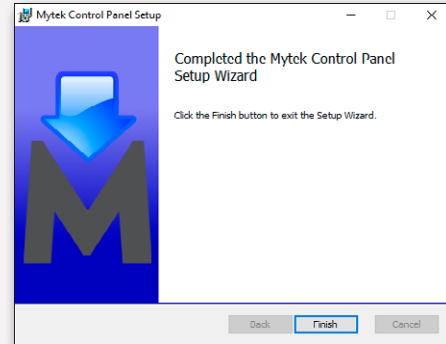
2. To install The Mytek Control double click the extracted Windows Installer Package file. When MytekControl Setup Wizard appears click „Next” then accept license and click „Next” again.



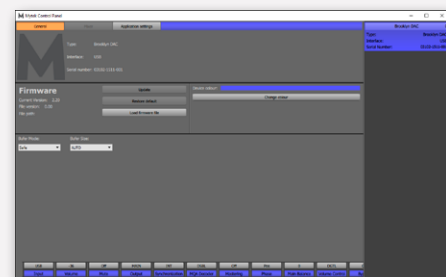
3. All options should be chosen in „Custom Setup” menu. To confirm the installation of each option select „Will be installed on local hard drive” then click „Next” and „Install” to begin the installation.



4. To complete installation of the driver simply click the „Finish” button.

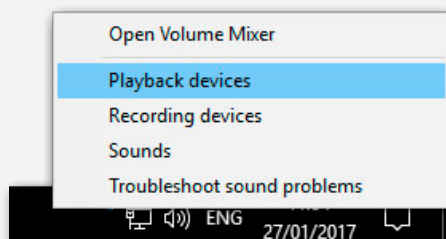


5. Confirm installation by launching the MytekControl application. Installation was successful if the MytekControl application shows the Brooklyn Bridge with serial number and permits access to all options.

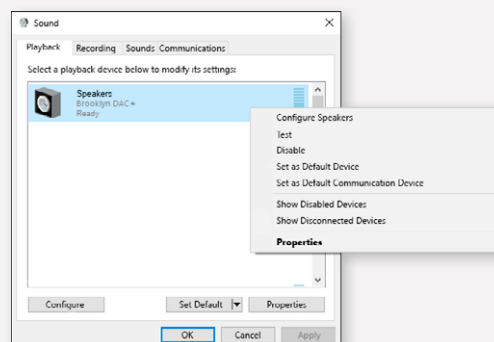


6.3 Windows – setting the Brooklyn Bridge as default playback device

1. To set the Brooklyn Bridge as your default Windows playback device find the speaker icon (Sound Settings) in the notification area (lower right corner of your screen) and right-click. Choose "Playback devices" from the context menu.



2. Right-click „Speakers Brooklyn Bridge” and choose „Set as Default Device”.



Note! Pro audio (DAW) applications (Cubase, Samplitude, Reaper, etc.) or professional media players (JRiver, etc.) use ASIO drivers and need to be configured different way. Please check our „[Software Setup Guide](#)” shown on our website:

mytekdigital.com

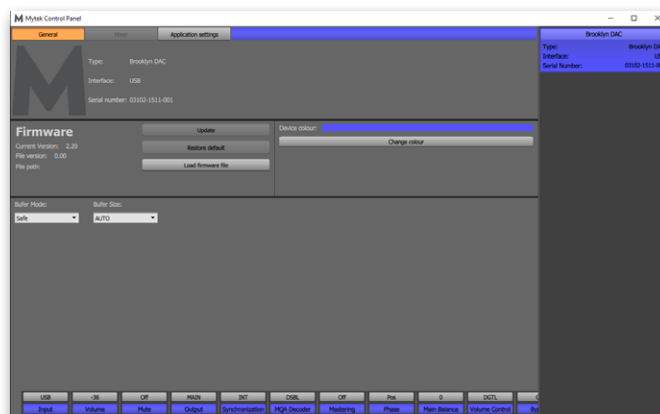
7. macOS installation

7.1 macOS – USB 2.0 driver installation

The Brooklyn Bridge custom designed USB2 controller supports **driverless** operation on MAC. It means that no extra drivers are required. Driverless operation basically means „**plug and play**”. The Brooklyn Bridge will automatically show up in your computer’s list of supported audio devices as „Brooklyn Bridge”. Simply choose that as your default audio playback device and the system will work.

7.2 macOS – Mytek Control Panel installation

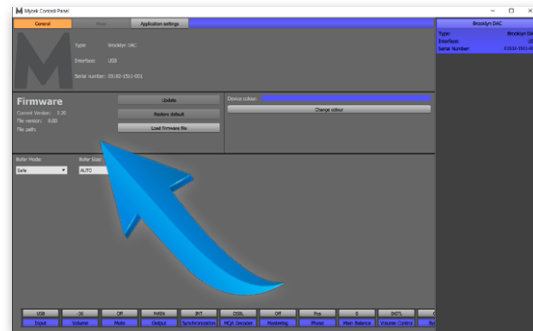
To install the Mytek Control Panel simply drag and drop Mytek application file (located in Mytek_ControlPanel_v.1.xx.dmg file) to „Applications” system folder. Follow the link to download the latest version of the Mytek Control Panel application.



MYTEK

8. Firmware update Windows and mac OS

The current revision of the Brooklyn Bridge firmware is shown in the MytekControl „General“ tab.



- The firmware can be updated by using USB2 port and Mytek Control Panel application. It requires already installed USB2 driver (PC only) and Mytek Control Panel application. To download the current firmware as well as drivers please visit mytekdigital.com
- It is recommended to turn off any powered speakers / power amps connected to the Brooklyn Bridge before proceeding with the firmware update

Follow the steps below to update the firmware:

1. Download the latest firmware (*.mfb) file from mytekdigital.com
2. Click „Load firmware file“ button and browse to the new firmware file then click „Open“
3. Press the „Update“ button to confirm uploading the firmware file to device's memory
4. Confirm your choice by clicking „Yes“ when warning dialog appears. A progress bar will indicate when the flash process is finished
5. When the update is finished the the DAC will reset and start in sleep mode. To switch it on press the knob once. Once the DAC has been restarted the firmware update is complete. A reboot of the computer is not necessary

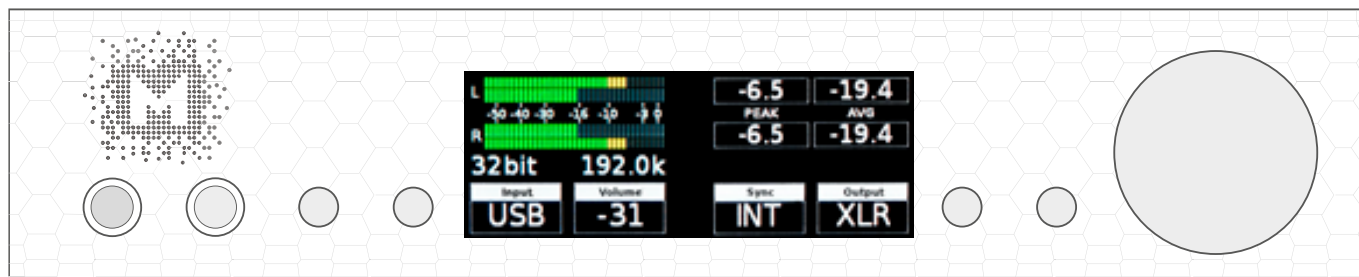
When the update fails:

1. Disconnect power cord
2. Press and hold the first (from the left) button and connect the power cord again
3. The DAC runs in Bootloader mode. The logo becomes white and blinks constantly
4. The update process should then be tried again

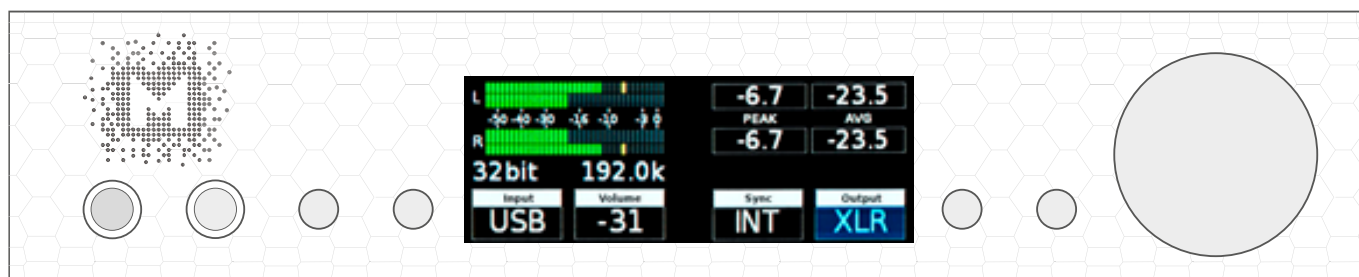
9. Menu

9.1 Menu Navigation

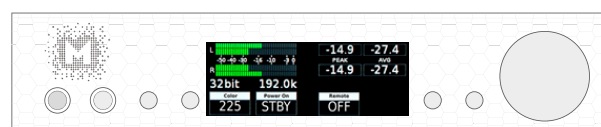
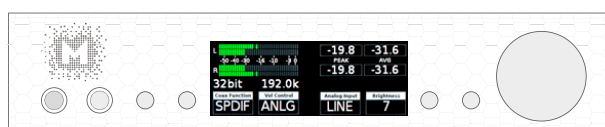
The four buttons, one encoder and the high-resolution display enable the user to quickly change and configure the device's settings. There are always four parameters shown at the bottom of the display.



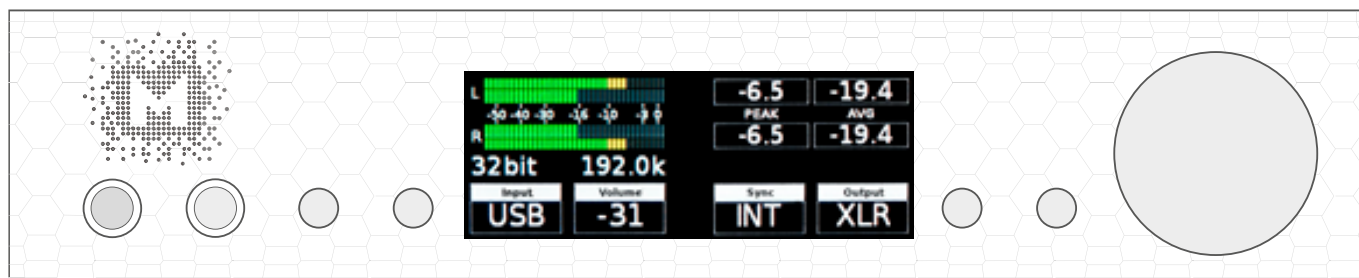
To enter the one of four parameters menu shown on the display, press one of the four buttons located on the left and right side of LCD display. When the value is ready to change it is back-lit with blue color. To change the value rotate the knob until you see the option / value you need. Press the knob (or the same button) again to leave the menu.



Turn the knob round to navigate between all available parameters.



Press the knob once to activate the screensaver.



Press and hold the knob to switch the Brooklyn Bridge off / on.

9.2 Menu Operation

9.2.1 Input

- **USB** - USB 2.0 Hi-speed, custom designed, Audio Class 2 compliant input that is capable of 384kHz (PCM) and up to 256DSD playback. Fast, reliable Windows drivers are provided. Plug and Play, driverless on MAC and Linux
- **NET** - Ethernet input or Wi-Fi connection capable of receiving PCM data up to 24bit/192kHz and DSDx64 (DoP).
- **SPDF1 & SPDF1** (S/PDIF1&2) – coaxial S/PDIF input capable of receiving PCM data up to 192kHz and DSDx64 (DoP). This input can also be used to record digital signal (DAW, sound editors) to computer via USB2 connection
- **OPTO** (TOSLINK) - optical S/PDIF input capable of receiving PCM data up to 192kHz and DSD DoP (64xDSD only). Also available as separate pair of digital inputs in recording software
- **ANLG** (Analog) - RCA analog input, line level or phono preamp (MM, MC), it can bypass the volume control or be routed through it

9.2.2 Volume - volume level

9.2.3 Mute – all outputs are muted

9.2.4 Output signal routing

- **AUTO** - Brooklyn Bridge detects if headphones has been connected. MAIN outputs are muted
- **HP** - the signal is available on headphones output only
- **MAIN** - the signal is available on XLR and RCA outputs
- **BOTH** - the signal is available simultaneously on MAIN (XLR & RCA) and HP outputs

9.2.5 Sync

There is always only one master device in digital world. The others have to operate as a slave. That is why an external digital devices such as CD players, digital recorders etc. have to be also configured properly. Otherwise clicks, drops, distortions might appear in the final signal. Following sync options are available:

- **INT** (Internal) / USB, Network, Wi-Fi / Incoming signal is synced to the converter's ultra-low jitter internal crystal oscillator. This choice assures the best DAC performance and is superior to any (even Atomic) clock supplied from outside because of its close proximity to DAC clocking chipset. The DAC operates as master device.
- **SPDF1, SPDF2, OPTO** tThe DAC operates as slave device.

9.2.6 MQA Decoder

- **Enabled** (ENBL) – MQA decoder is activated
- **Disabled** (DSBL) – to enable Mastering menu the MQA must be switched off

9.2.7 Phase – phase switch

- **Pos** - default
- **Neg** – the signal phase is inverted

9.2.8 Main Balance – audio balance control

9.2.9 Trim / Gain

Use this option to change DAC headroom. It can be set independently for each digital input

- Digital Volume Control mode range: -12 to 0 dB
- Analog Volume Control mode range: -12 to +12 dB

9.2.10 Vol Control

- **ANLG** (Analog) - the output level is controlled by the analog fader
- **DGTL** (Digital) - the output level is controlled digitally with ultra precision digital attenuator

9.2.11 Allow Bypass

- **No** – disable Bypass function
- **Yes** – enables bypass unction

9.2.12 Bypass (ON/OFF)

Relay bypass of all faders for the cleanest output path possible. Only the main outputs are affected while the headphone output is still controlled by analog fader.

Attention! To prevent damage your speakers reduce the output level of your preamp BEFORE activating "Bypass" mode.

9.2.13 Theater Byp (ON/OFF)

Theater bypass function connects analog input of the DAC directly to the analog output. It is for use in home theatre to control 5.1 setup with other volume control than Brooklyn's.

9.2.14 USB Volume [HID]

When this option is enabled the DAC main outputs signal level can be controlled by OS volume fader. Click small speaker icon shown in Windows taskbar to see the fader. If the icon is not visible please go to your system settings „Notifications & actions“ (Win10) and enable it.

Attention! Be aware that when „USB Volume“ option is enabled the USB host device will always control the volume level of the DAC (even if different than „USB“ input is selected as the signal source). Be cautious not to damage your speakers.

- **DSBL (default)** - Volume can be controlled by using Mytek Control Panel or volume knob at the front of the DAC.
This setting is recommended when SPDIF coax, SPDIF optical inputs are used and the DAC is still connected to computer.
- **dB** - mac OS or Linux recommended setting. Signal level can be controlled by using Mytek Control Panel, volume knob or main system fader.
- **Win** - Windows recommended setting. Signal level can be controlled by using Mytek Control Panel, volume knob or main system fader.

9.2.15 Analog Input

(Analog Input Mode) - A pair of unbalanced analog inputs can be selected in addition to all available digital inputs. As with other inputs, it can be routed via the analog stepped attenuator to both main outputs and headphones. One of three modes can be selected:

- **LINE** - line level input
- **P MM** - phono preamp, for Moving Magnet cartridges
- **P MC** - phono preamp, for Moving Coil cartridges

9.2.16 PCM Filt Shpe (PCM Filter Shape)

- **FRMP** - fast roll-off, minimum phase filter
- **SRMP** - slow roll-off, minimum phase filter
- **FRLP** - fast roll-off, linear phase filter
- **SRLP** - slow roll-off, linear phase filter
- **APDZ** - apodizing, fast roll-off, linear phase filter
- **HBRD** - hybrid, fast roll-off, minimum phase filter
- **BRCK** - brickwall filter

Note! When MQA is enabled the filter is fixed to the custom filter designed by MQA Ltd. and all above PCM Filters Shape settings are not available.

9.2.17 DSD Filt BW (DSD Filter Bandwidth)

- **AUTO** - the filter is selected automatically depending on DSD rate: for DSDx64 - LO, DSDx128 - MED, x256 - HI. It is highly recommended to leave this option enabled.
- **LO** - 47,44 kHz IIR Filter
- **MED** - 60kHz IIR Filter
- **HI** - 70 kHz IIR Filter

9.2.18 Disp Auto Off (Display Auto Off) - sets the interval when the display is turned off. It is still possible to listen to music while the display is off. To return to the main screen press any button on the frontpanel (including Vol knob)

9.2.19 Display Bright – this allows to adjust brightness of the display

9.2.20 Auto Return – determines the time of activationg the simple screen

9.2.21 Diode Bright (0 – 16 steps) - sets the brightness of the logo

9.2.22 St-by D Bright – sets the brightnes of the logo in Standby mode

9.2.23 Color - sets the color of the logo, 16 colors are available

9.2.24 Streamer pwr

- **Auto** – In this settings Network streamer is turned off when Brooklyn Bridge is in standby. This function lowers power consumption
- **On** – Network streamer is always on
- **Off** – Network streamer is always off

Note – Selecting “PHONO” as input always turn off the network module. Otherwise there would be audible noise coming from the network extension (this is due to high susceptance [high gain] of the phono pre input). Changing the input back from “PHONO” triggers power-up of the network module. After that when “NET” input is selected “Wait...” is displayed on main screen.

9.2.25 Power On - (when the powerd cord is attached to the DAC)

- **WORK** - the DAC activates itself in standard working mode
- **STBY** – the DAC activates itself in sleep mode
- **AUTO** – the DAC remembers last mode

9.2.26 Remote (Remote Control mode)

- **OFF** - the „Remote” function is turned off
- **RC5** - the „Remote” is turned on, standard RC5 compatible r-controllers can be used
- **Apple** - the „Remote” is turned on, Apple remote can be used (included in the bundle)

9.2.27 Remote Addr (Remote Address)

Available only when „Remote” is acitvated. It is found automatically when you press a remote controller’s button

9.2.28 Network (LAN status information or setting Wi-Fi connection)

- **LAN** - Ethernet connection has higher priority than Wi-Fi connection. It means that if your Brooklyn Bridge is connected to your local LAN network Wi-Fi functionality will not be available. Unplug Brooklyn Bridge from ethernet cable to unlock Wi-Fi functionality. When ethernet cable is connected IP address is displayed.
- **Wi-Fi** - When ethernet cable is disconnected, after a while, Wi-Fi function is automatically enabled and you will see list of available Wi-Fi networks, quality of signal and encryption type.
To connect your DAC to your Wi-Fi simply select it (via rotary knob) from the list and use "Connect" tile corresponding button. The list is periodically refreshed in 5 seconds interval.

On the next screen you can enter a password for your Wi-Fi. Use rotary encoder knob to select a letter/sign and use arrows corresponding buttons for going from one letter/sign to another. You can also delete last character by using far right button (closest to rotary knob). First you can select miniscule then capital letters then digits and at last special characters. The very last character functions as space. When you complete entering password choose "Connect".

After a while (up to around 30 sec.) Brooklyn Bridge will connect to your Wi-Fi and will remember it as a default one.

If wrong password was entered available Wi-Fi connections list will appear again.

9.2.29 Device Info

- **Network Module Update** - allows you to update network streamer firmware if new version is available
- **RESTORE** - restore the Brooklyn Bridge to the factory settings

Note! All above settings except "Network Setup" and "Device Info" can also be changed by using the Mytek Control Panel application.

10. MQA - Master Quality Authenticated



MQA is an award-winning British technology that delivers the sound of the original master recording. The master MQA file is fully authenticated and is small enough to stream or download. Using pioneering scientific research into how people hear, MQA delivers master quality audio in a file that's small enough to stream or download – the days of sacrificing quality for convenience are over. Visit mqa.co.uk for more information.

The Brooklyn Bridge includes MQA technology, which enables you to play back MQA audio files and streams, delivering the sound of the original master recording.

Authentication Types

The color of the small spot next to MQA logo indicates if the MQA stream is detected.

The spot glows green or blue to indicate that the unit is decoding and playing an MQA stream or file, and denotes provenance to ensure that the sound is identical to that of the source material.

It glows blue to indicate it is playing an MQA Studio file, which has either been approved in the studio by the artist/producer or has been verified by the copyright owner.

11. Remote

The Mytek Brooklyn Bridge is infrared remote ready and will work with any Aluminum Apple Remote or any Universal Remote Control using the Philips RC5 standard.

- OFF
- RC5
- Apple

11.1 The Brooklyn Bridge Apple Remote Setup

1. Turn the knob round until you see „Remote” menu then press third button to activate the menu.
2. Choose „NEC” option. „Remote Addr” appears on the left.
3. Activate „Remote Addr” menu by pressing fourth button. The menu should be backlit with blue color.
4. Press the center (Enter) button on the Apple Remote.
5. Done! - the Apple remote is paired.

11.2 The Brooklyn Bridge Standard Remote (RC5) Setup

1. Turn the knob round until you see „Remote” menu then press third button to activate the menu
2. Choose „RC5” option. „Remote Addr” appears on the left
3. Activate „Remote Addr” menu by pressing fourth button. The menu should be backlit with blue color
4. Press any button on the RC5 compatible remote. The Brooklyn Bridge find the address automatically
5. Done! - the remote is paired



12. Technical Specification

ANALOG

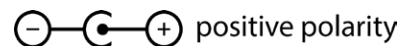
- Analog Outputs Connectors: 2 XLR balanced outputs, 2 RCA unbalanced outputs
- Resolution DA: PCM 32bit / DSD up to 256 (11.2 Mhz)
- PCM Sample Rate: 44,1 / 48 / 88,2 / 96 / 176,4 / 192 / 384 Khz
- Dynamic Range: 130dB
- Output Impedance: 75 Ohm
- Headphone Amp: more than 500mA, 6 Watts
- High Current, High Slew Rate ultra low distortion, balanced
- Built-in Analog Preamp: Line level input or Phono M/M, M/C input, relay controlled

DIGITAL

- Computer Audio I/O: USB 2.0 Hi-Speed, data stream up to 480Mbps/384kHz, Type B, driverless
- Network: RJ-45 connector, PCM up to 24Bits / 192.0kHz, DSD up to x64 (DoP)
- S/PDIF Optical Input: up to 176.4kHz, DSD x64, single wire
- S/PDIF Coaxial Input 1 & 2: PCM up to 24Bits / 384.0kHz, DSD up to x128 (DoP), single wire
- Clock: Mytek Femtoclock Generator (tm) 0.82ps internal jitter, Wordclock Input and Output (allows stacking multiple units for multichannel operation, includes mch DSD)

GENERAL

- Firmware: upgradable via USB Control panel, updates available online, periodic feature upgrades
- Power Supply: Internal switching PSU, 100 - 240 V AC
- External power supply: 12V, 4 - 6A / connector dimensions: 5.5 mm / 2.5 mm (inner pin)



- Dimensions [W x H x D]: 218 x 44 x 206 mm / 1U half rack
- Weight: 1,6 kg
- • Brooklyn Bridge power consumption:
- 230V AC powered:
 - 23VA with no load,
 - 28VA with 150Ohm load per channel, full scale sine driven
- 12V DC powered
 - 15W with no load
 - 21W with 150Ohm load per channel, full scale sine driven

13. Warranty

Each individual Brooklyn Bridge undergoes comprehensive quality control and a complete test before shipping. This Brooklyn Bridge is warranted by Mytek to the original purchaser against defects in workmanship and materials used in manufacture for a period of two years from the date of purchase.

Faults due to customer misuse, unauthorized modifications or accidents are not covered by this warranty. No other warranty is expressed or implied.

If you suspect that your product is faulty, please contact your local retailer. Prior to shipping customer or retailer must obtain an RMA number from Mytek for warranty services. Units sent without RMA number will not be accepted.

Mytek extends affordable repair service for all units manufactured to date that are not covered by this Warranty. Mytek repair centers are located at Mytek Headquarters in Brooklyn / New York, and in Warsaw / Poland (at Mytek EU Distribution Office).

Important Safety Information

- Read, keep and follow these instructions
- Connect all your devices before powering the unit
- Do not expose this device to moisture, rain and liquid of any kind
- Clean only with dry cloth
- If any form of liquid or a foreign object enter the device switch it off and unplug it from the power source. Do not operate device until the foreign object is removed or the liquid has completely dried. If doubt please contact Mytek Digital
- Do not block any ventilation openings. Install in accordance with the manufacturer's instructions
- Do not install near any heat sources such as radiators, heat registers, stoves, or other apparatus (including amplifiers) that produce heat
- Do not defeat the safety purpose of the polarized or grounding-type plug. A polarized plug has two blades with one wider than the other. A grounding-type plug has two blades and a third grounding prong. The wide blade or the third prong are provided for your safety. If the provided plug does not fit into your outlet, consult an electrician for replacement of the obsolete outlet
- Protect the power cord from being walked on or pinched particularly at plugs, convenience receptacles, and the point where they exit from the apparatus
- Only use attachments/accessories specified by the manufacturer
- When a cart is used, use caution when moving the cart/apparatus combination to avoid injury from tip-over
- Unplug this apparatus during lightning storms or when unused for long periods of time
- Refer all servicing to qualified service personnel. Servicing is required when the apparatus has been damaged in any way, such as power-supply cord or plug is damaged, liquid has been spilled or objects have fallen into the apparatus, the apparatus has been exposed to rain or moisture, does not operate normally, or has been dropped

Warning

Excessive sound pressure from speakers and headphones can cause hearing loss. In order to use this product safely, avoid prolonged listening at excessive sound pressure levels.

For the customers in the U.S.A.

This equipment has been tested and found to comply with the limits for a Class A digital device, pursuant to Part 15 of the FCC Rules. These limits are designed to provide reasonable protection against harmful interference when the equipment is operated in a commercial environment. This equipment generates, uses, and can radiate radio frequency energy and, if not installed and used in accordance with the instruction manual, may cause harmful interference to radio communications.

You are cautioned that any changes or modifications not expressly approved in this manual could void your authority to operate this equipment.

All interface cables used to connect peripherals must be shielded in order to comply with the limits for a digital device pursuant to Subpart B of Part 15 of FCC Rules.

This device complies with Part 15 of the FCC Rules. Operation is subject to the following two conditions: (1) this device may not cause harmful interference, and (2) this device must accept any interference received, including interference that may cause undesired operation.

This product with the CE marking complies with the EMC Directive issued by the Commission of the European Community. Compliance with this directive implies conformity to the following European standards:

- EN55103-1: Electromagnetic Interference (Emission)
- EN55103-2: Electromagnetic Susceptibility (Immunity)

This product is intended for use in the following Electromagnetic Environments: E1 (residential), E2 (commercial and light industrial), E3 (urban outdoors), E4 (controlled EMC environment, ex. TV studio).

Information on Disposal for Users of Waste Electrical & Electronic Equipment(private households)

The Wheelie Bin symbol on the products and/or accompanying documents means that used electrical and electronic products should not be mixed with general household waste. Disposing of this product correctly will help save valuable resources and prevent any potential negative effects on human health and the environment.

To properly dispose harmful substances and recycle the product, the user is obliged to return it at the point of collection of electrical and electronic equipment waste. For more information please contact your local authorities, waste disposal units or retailer.



