



Wall: Solid construction *Airtight on the inside*

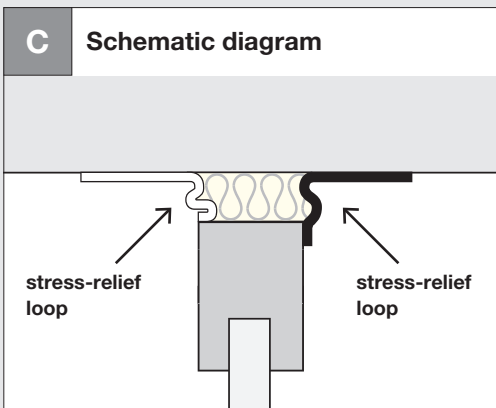
Joining window to solid wall construction - Tips and tricks



- Clean all substrates to ensure high adhesive strength



- Fold the front end of the protruding backing strip back so that it is ready at hand and can be easily removed later
- Install the window

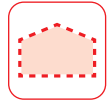


- Apply free from stress and tension



- Press the tape on firmly with a roller to ensure even more protection

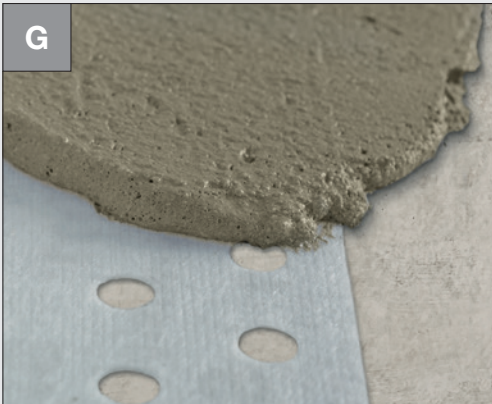
Wall: Solid construction *Airtight on the inside*



- Fill joint seam with insulation material without cavities



- Overlap the tape at the joints by approx. 5 cm



If Fentrim is plastered:

- Don't seal more than 50 % of the soffit or reveal depth and max. 60 mm without counting the Fentrim perforated zone.



Leakages, cracks, penetrations:

- Seal using the reliable high-performance sealant Meltell



Wall: Solid construction *Airtight on the inside*

Preparing the skirt – without windowsill joint profile

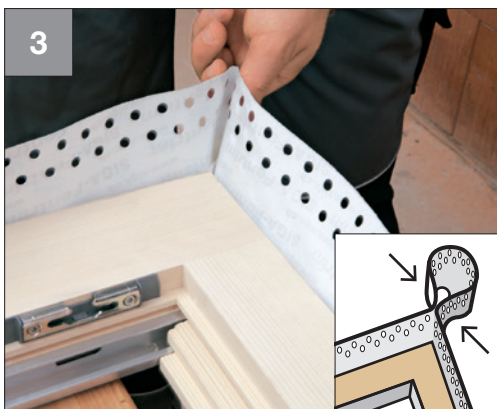


Initial situation:

- Frame provided



- **Bond laterally** to frame at the bottom starting in the centre
- Press on firmly



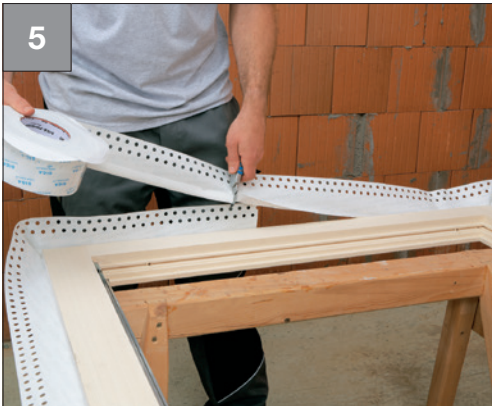
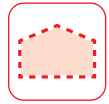
Corners:

- Form a loop: 1.5 x joint width
- Bond or press together firmly



- Repeat on all sides
- Press on firmly

Wall: Solid construction *Airtight on the inside*



5

Overlaps:

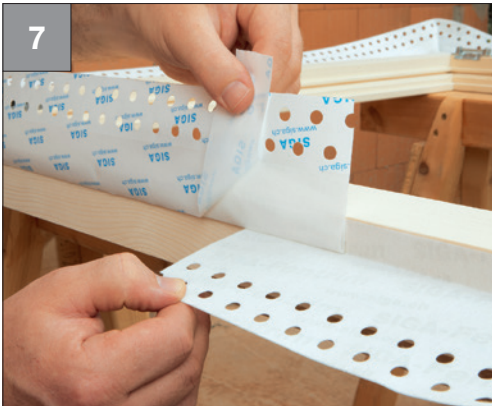
- Apply with about 5 cm overlap
- Cut off



6

Overlaps:

- Apply with about 5 cm overlap



7

- Fold back protruding backing strip
- Align and fix free from tension



8

After skirt preparation for the inside with Fentrim 20:

- Turn frame
- Prepare the skirt for the outside with Fentrim 2 or Fentrim IS 2



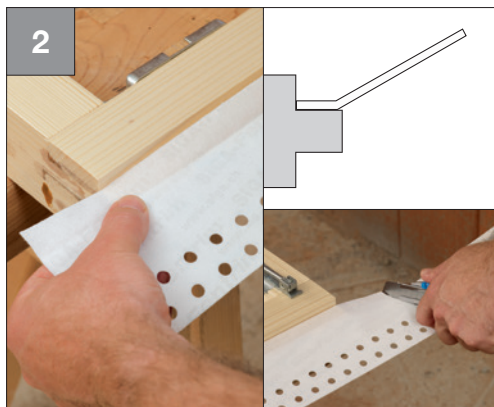
Wall: Solid construction *Airtight on the inside*

Preparing the skirt – without windowsill joint profile



Initial situation:

- Frame provided



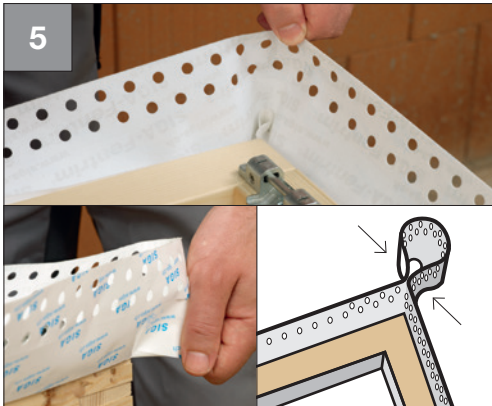
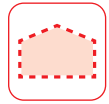
- Bond to the windowsill joint profile at the **bottom**
- Projecting by joint width + approx. 6 cm on both sides
- Press on firmly



- Bond laterally to the frame
- Projecting by about the joint width at the bottom
- Press on firmly



Wall: Solid construction *Airtight on the inside*



Top corners:

- Form a loop: 1.5 x joint width
- Bond or press together firmly
- Repeat on the other side



- Bond to all sides of the frame
- Press on firmly
- Projecting by the joint width at the bottom
- Cut off



Bottom corners:

- Make a rectangular cut up to the folded edge
- Fold over
- Press on firmly
- Repeat on the other side



After skirt preparation for the inside with Fentrim 20:

- Turn frame
- Prepare the skirt for the outside with Fentrim 2 or Fentrim IS 2



Wall: Solid construction *Airtight on the inside*

Join skirt to masonry



Initial situation:

- Window installed with prefabricated skirt



- Remove protruding backing strip step by step
- Align and fix free from tension
- Remove second backing strip
- Press on firmly



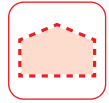
Bottom corners:

- Bond laterally to the reveal
- Form trough
- Repeat on the other side



- Align and fix free from tension
- Bond to bottom of trough
- Press on firmly

Wall: Solid construction
Airtight on the inside



Top corners:

- Bond loop into corner free from tension
- Press on firmly
- Repeat on the other side



How it should look:

- Prefabricated skirt attached to masonry

Joint plastered:

Joint covered:



Fentrim® 20

P. 142

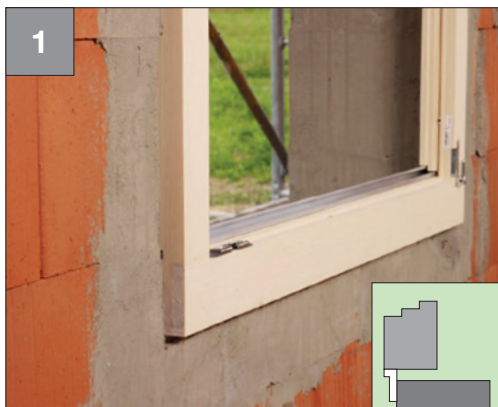
Fentrim® IS 20

P. 144



Wall: Solid construction *Airtight on the inside*

Connection for windows, protruding inside



Initial situation:

- Window installed with prefabricated skirt



- Bond with the narrow side to the edge at the frame bottom
- Projecting about 10 cm on both sides
- Press on firmly



Corners:

- Cut narrow side up to the folded edge at an angle of 45°



- Fold over
- Press on firmly
- Repeat on all sides

Wall: Solid construction *Airtight on the inside*



- Remove protruding backing strip
- Align and fix free from tension
- Remove second backing strip
- Press on firmly
- Repeat on all sides

How it should look:

- Window connection inside

Joint plastered:



Fentrim®20

P. 142

Joint covered:



Fentrim® IS 20

P. 144